

High Speed A3 Flatbed Scanner

i SAFETY PRECAUTION

- Keep away from water or moisture and dusty areas.
- Never store in hot and very cold areas.
- Only use attachments/accessories specified by the manufacturer.
- No objects filled with liquids, such as vases, shall be placed on the Scanner.
- Avoid dust contamination when the Scanner is not in use.
- When left unused for a long period of time, the unit should be disconnected from the power cable.
- Avoid environments where the Scanner would be exposed to direct sunlight (or any other source of excessive heat) for long periods of time.
- Protect the Scanner from potential liquid spills such as soda, coffee, tea, and etc.
- Be carefully to keep it without dropping it or strong impact.
- Operate the Scanner on a level, well-grounded work surface, free of excessive vibration.
- Don't open the Scanner case alone without technical support because there is danger of electrical shock.
- Position the equipment near a power outlet where it can be easily accessed when plugged in.

ii SYSTEM REQUIREMENTS

Processor	PC: Intel Pentium IV or faster Mac: Intel Core Duo or faster
Support OS	PC: Windows XP (Service Pack 3) / Vista / 7 / 8 / 10 Mac: Mac OS X 10.7 to 10.11 and above
Color Display	1024 x 768 resolution or above
RAM	1GB RAM (2GB recommended)
Free Hard Drive Space	PC: 600MB Mac: 100MB
Drive	CD or DVD-ROM Drive for software installation
Interface	Available USB port

iii SPECIFICATIONS

Model	A3F1200N	A3F2400N
Scanning Element	Contact Image Sensor (CIS)	
Light Source	Three-color (RGB) LEDs	
Scan Mode	Color: 48-bit, 24-bit Gray: 16-bit, 8-bit Line art: 1-bit	
Scan Area (Max.)	299mm x 427mm (11.8" x 16.8")	
Optical Resolution	1200 dpi x 1200 dpi	2400 dpi x 2400 dpi
Enhanced Resolution	9600 dpi x 9600 dpi	
Interface	Hi-Speed USB 2.0	
Power Consumption	12VDC, 2A, 24W (Input: 100~120VAC or 200~240VAC, 50~60Hz)	
Operation Temperature and Humidity	10 °C - 35 °C (50 °F - 95 °F) ; 10% to 85%	
Power Saving	Auto power off after no operation for 15min	
Dimension (LxWxH)	576mm x 406mm x 72mm (22.6" x 15.9" x 2.8")	
Weight	4.6 kgs (10.1 lbs)	

iv BUNDLED DRIVERS AND SOFTWARE

[Windows]

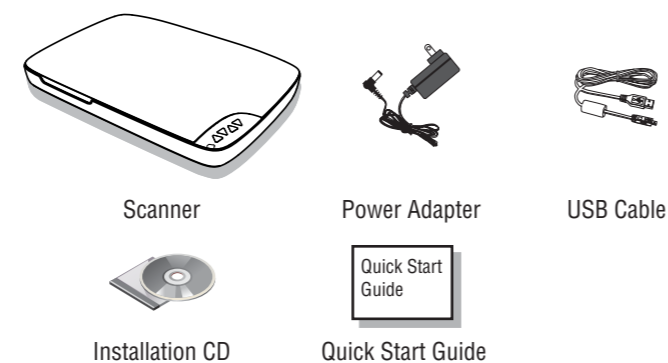
1. Scanner Driver - Scanner Driver includes following:
YOU MUST FIRST INSTALL SCANNER DRIVER IN ORDER TO USE THE SCANNER ON YOUR COMPUTER.
 - a. TWAIN and WIA driver: it comes with TWAIN interface to use the Scanner from within any WIA or TWAIN-compliant graphics software applications such as Mediampression, Photoshop.
 - b. Panel V2.0: this software application allows you to easily scan from the Scanner buttons or within this application.
 - c. Hardkey Settings: this tool allows you to configure settings for scanner buttons.
 - d. Help files: this includes detailed instructions of Panel V2.0 and of the TWAIN interface.
 - e. Clean Calibration: Run this tool to clear the calibration data left from the previous scanner, when you use another same model scanner on the same computer with a previous driver.
2. ArcSoft Mediampression - this TWAIN-compliant application enables scanning via the TWAIN interface. For detailed information of this application, see the "Help" file integrated within this application.
3. ABBYY FineReader Sprint - this application converts scanned text into searchable text when using the PDF function. For detailed information of this application, see the "Help" file integrated within this application.
4. Adobe Acrobat Reader - this application opens the scanned image that is converted into a PDF format using the PDF function.

[Mac]

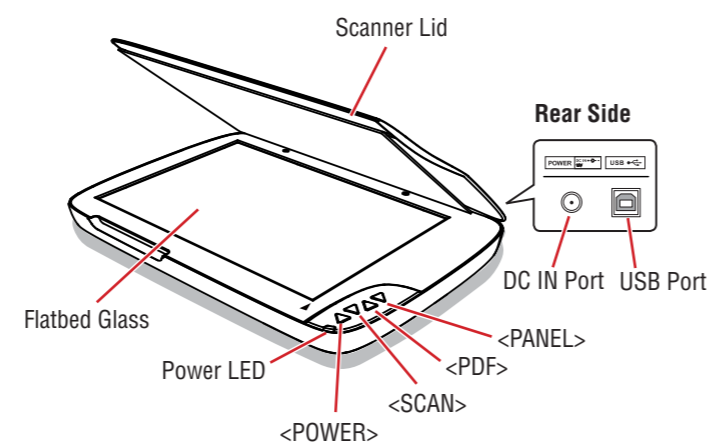
1. ImageAquire - this application is used to scan from the Scanner within the TWAIN interface. For detailed instructions of ImageAquire, see the PDF file inside the ImageAquire folder.
2. Scanner Driver - it comes with TWAIN interface to use the Scanner from within any TWAIN-compliant graphics application such as Photoshop. Refer to the PDF file inside the ImageAquire folder for detailed instructions of TWAIN interface.
3. ScanMust - this application allows you to easily scan from the Scanner buttons or within this software. For the detailed instructions of ScanMust, see the "Help" file integrated within this software.

1 PACKAGE CONTENTS

This package includes the following items:



2 NAMES OF SCANNER PARTS



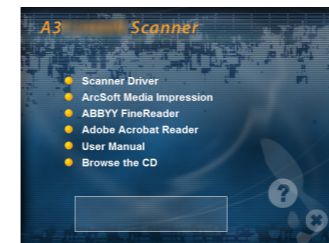
3 INSTALLING DRIVERS AND SOFTWARE

PLEASE COMPLETE THE DRIVERS AND SOFTWARE INSTALLATION BEFORE CONNECTING THE SCANNER. DO NOT CONNECT THE USB CABLE TO THE SCANNER OR COMPUTER AT THIS MOMENT.

[Windows]

1. Insert the Installation CD into the CD or DVD-ROM drive of the computer. The CD will run automatically, and then the installation window appears on the screen as following:

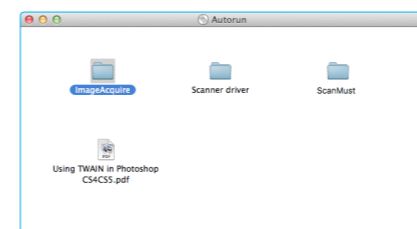
NOTE If the CD does not run automatically, locate the drive on the computer and double click on "AUTORUN.exe" file.



2. Click "Scanner Driver" from the installation window.
3. Select a preferred language from the "Choose Setup Language" list.
4. Click "Next" when the Welcome screen appears, and then follow on-screen instructions to complete installation.
5. Return to the installation window to install other software to your computer to enable certain functions.

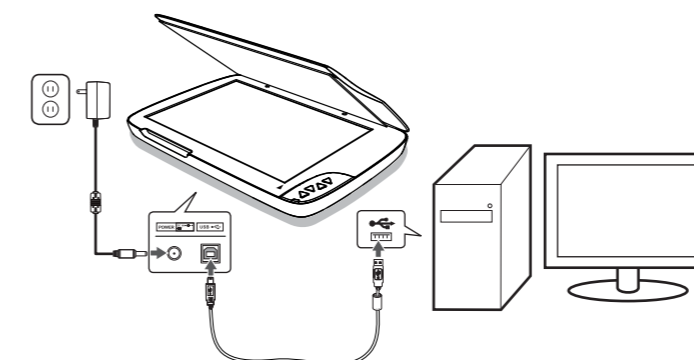
[Mac]

1. Insert the Installation CD into the CD or DVD-ROM drive of the Mac. The Autorun disc icon appears on your desktop.
2. Double click on the Autorun disc icon. The content of the disc is displayed in the Autorun folder as following:



3. Double click the "Scanner Driver" folder, then "A3FxxxN Scanner.pkg" to start the installation process. Follow on screen instructions to complete the installation procedures.
4. Return to the Autorun folder. Double click the "ScanMust" folder, and then "ScanMust Installer.pkg" to start the installation process. Follow on screen instructions to complete the installation procedures.
5. Return to the Autorun folder. Double click the "ImageAquire" folder, and then "ImageAquire.pkg" icon to start the installation process. Follow on screen instructions to complete the installation procedures.

4 CONNECTING THE SCANNER



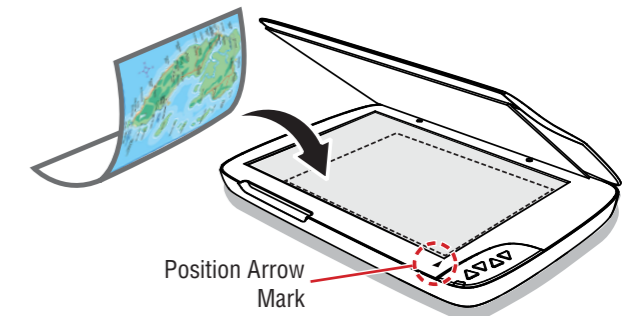
1. Connect supplied Power Adapter to the Scanner's DC IN port, and plug the other end to a power outlet.
2. With the computer on, connect supplied USB Cable to the Scanner's USB Port and the other end to the computer.

3. Press and hold <POWER> to turn on the Scanner. The Power LED lights up in blue.

NOTE To turn off the power, press and hold <POWER> for a while until the Power LED turns off.

5 PLACING THE ORIGINALS

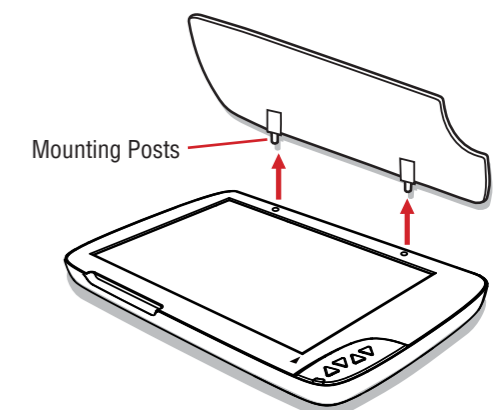
1. Place the original facing down on the Flatbed Glass.
2. Align the original at the Position Arrow Mark.
3. Close the Scanner Lid.



How to Remove the Scanner Lid

If you are scanning books or other thick documents, you can remove the Scanner Lid as following steps:

1. Lift the Scanner Lid straight up.
2. Pull the Scanner Lid away from the Scanner.
3. Place the bound original on the Flatbed Glass. Gently press the bound original from above to make it flat, but do not press it too hard.



NOTE When you are finished scanning, replace the Scanner Lid by inserting the 2 Mounting Posts into the holes on the Scanner, and then gently pushing the Scanner Lid down.

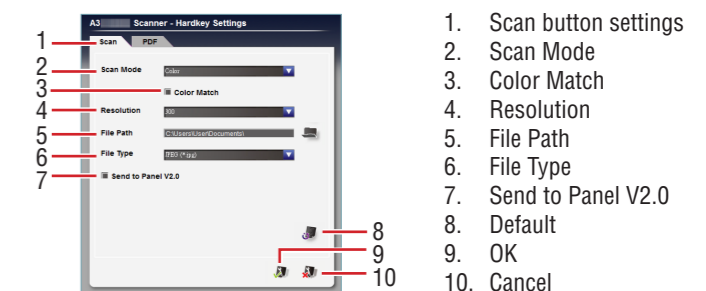
6 SCANNING PROCEDURES

[Windows]

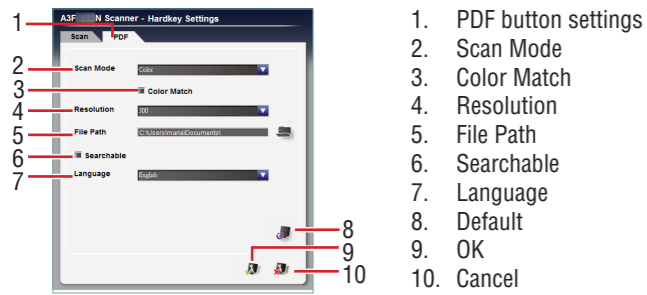
Setting Scanner Buttons

You can specify the <SCAN> and <PDF> buttons settings when you scan using these buttons.

From the "Start" menu, select "(All) Programs" > "A3FxxxN Scanner" > "Hardkey Settings" to open the Hardkey Settings window and make any necessary changes as following:

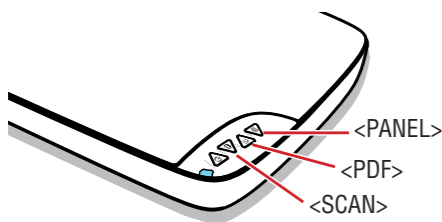


(Please turn over the page to continue)



NOTE For details about setting each item, click "Start" > "(All) Programs" > "A3FxxxN Scanner" > "Help" > "Hardware" to open the Help file.

Scanning From Scanner Buttons

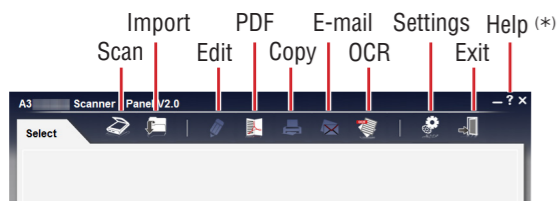


You can now scan using these scanner buttons:

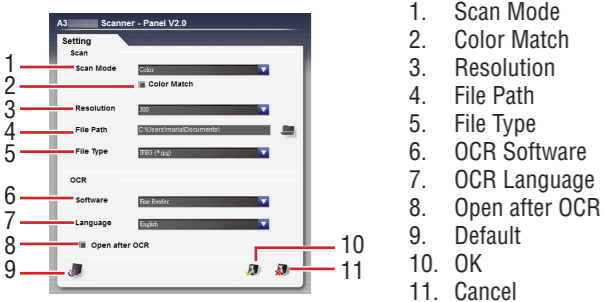
- Press <SCAN> to start scanning to a picture file (JPEG, BMP, or TIFF) using the settings you made in the Hardkey Settings. The scanned image opens automatically in Panel V2.0 by default after scanning.
- Press <PDF> to start scanning to a PDF file using the settings you made in the Hardkey Settings. A "Scan More? Yes/No" message appears when current scan is finished. You can place the next original on the Flatbed Glass, and then click "Yes" to scan, or click "No" to finish scanning. The image opens automatically in Acrobat Reader after scanning.

Scanning Using Panel V2.0

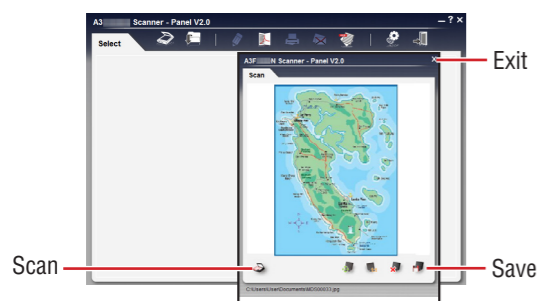
1. Press <PANEL> on the Scanner to open Panel V2.0 below.



2. Click on "Settings" to open the Panel V2.0 Settings, and make any necessary changes as following:



3. Click "Scan" button on Panel V2.0 to start scanning. *The preview window displays your image after scanning.*
4. Press "Save" button in the preview window to save the scanned image. You can place the next original on the Flatbed Glass, and then click "Scan" in the preview window, or click "X" (Exit) to close the preview.



NOTE (*) For detailed instructions about Panel V2.0, click "?" (Help) on Panel V2.0, or click "Start" > "(All) Programs" > "A3FxxxN Scanner" > "Help" > "Software" to open the Help file.

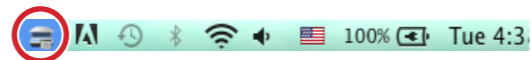
[Mac]

Setting ScanMust

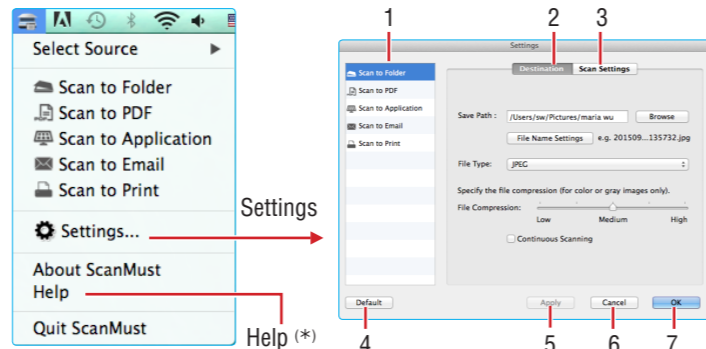
ScanMust provides scanning operations on the computer or on the Scanner using the buttons. You can adjust the settings prior to scanning.

1. Click the ScanMust icon (☰) in the menu bar to open the ScanMust menu.

If you cannot find the ScanMust icon (☰) in the menu bar, open "Finder", and then click "Applications". Find ScanMust in the Application folder, and then double click on it to open it in the menu bar.



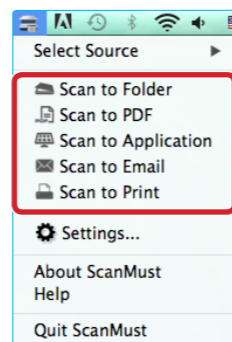
2. Click "Settings..." to open the Settings window and make necessary settings as following:



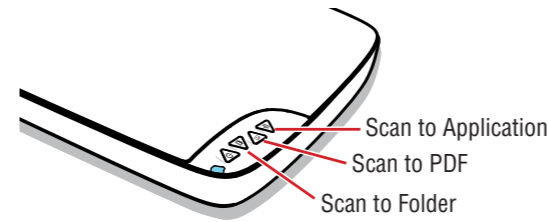
1	Scan To Menu	Select the scan-to function, including "Scan to Folder", "Scan to PDF", "Scan to Application", "Scan to Email", "Scan to Print" to change the settings.
2	Destination	Click the "Destination" tab to display the settings options, including File Path, File Type, and etc. (*) For the detailed settings in the Destination, click Help in the ScanMust menu.
3	Scan Settings	Click the "Scan Settings" tab to display the settings options, including Scan Mode, Resolution, and etc. (*) For the detailed settings in the Scan Settings, click Help in the ScanMust menu.
4	Default	Reset both Destination and Scan Settings to the default for the currently selected scan-to function.
5	Apply	Apply the selected scan-to function with the settings you changed.
6	Cancel	Cancel the changes, and close the Settings window.
7	OK	Apply the selected scan-to function with the settings you changed, and close the Settings window.

Scanning Using ScanMust

1. Click the ScanMust icon (☰) in the menu bar, then click a scan-to function from the ScanMust menu, including "Scan to Folder", "Scan to PDF", "Scan to Application", "Scan to Email", and "Scan to Print".



Alternatively, you can press the Scanner buttons from the Scanner. The <SCAN>, <PDF> and <PANEL> buttons correspond to "Scan to Folder", "Scan to PDF" and "Scan to Application", respectively.



2. After scanning completes, the scanned image is saved and opened according to the scan-to function you select as below:
 - **Scan to Folder** - The specified folder opens automatically with the scanned image selected in it.
 - **Scan to PDF** - The scanned image opens automatically in Preview by default.
 - **Scan to Application** - The scanned image opens automatically in the specified application (default: Preview).
 - **Scan to Email** - The default email application opens up with the scanned image attached in a blank email. **Please note that Scan to Email only supports Apple Mail and MS Outlook as Email clients.**
 - **Scan to Print** - The computer's print dialog box opens up with the image in it. Use the print dialog box to set the available settings of the printer driver to print the scanned image.

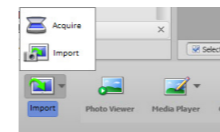
NOTE For detailed instructions about ScanMust, click "Help" in the ScanMust menu to open the Help file.

7 SCANNING USING TWAIN INTERFACE

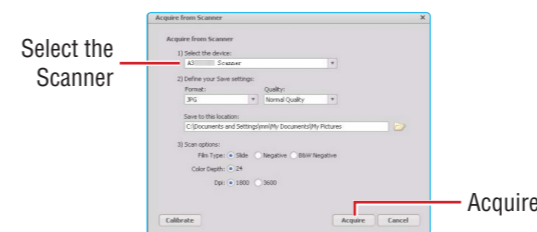
[Windows]

This scanner includes the TWAIN interface for use within TWAIN-compliant graphic applications such as Medialmpression, Photoshop. Following is an example of using Medialmpression.

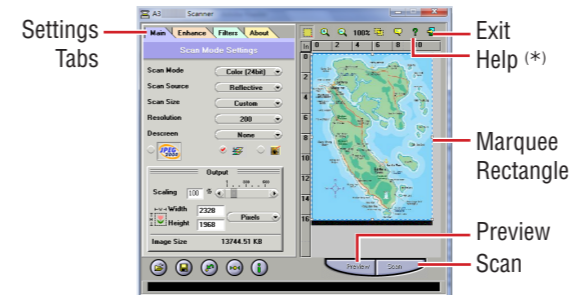
1. Launch Medialmpression, and then click "Pictures" in the start screen.
2. Click on Import icon, and then select "Acquire".



3. Under the Select the device, select "A3FxxxN Scanner", then click "Acquire" to open the TWAIN interface.



4. Make the necessary changes in the Settings Tabs, then click "Preview". Repeat this step until you are satisfied with the preview results. *You can resize the scan area by dragging the Marquee Rectangle to make selection on the image in the Preview window.*



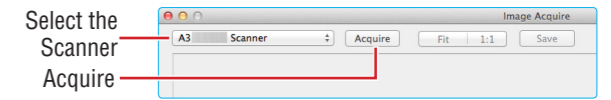
5. Click "Scan" to scan the final image. *After scanning completes, you can place the next original on the Flatbed Glass in the Scanner, then click "Scan" again.*
6. When you're finished with the scanning, click Exit icon to import the scanned image into the Media Impression.

NOTE (*) For detailed instructions about TWAIN interface, click "?" (Help) on the TWAIN interface to open the Help file.

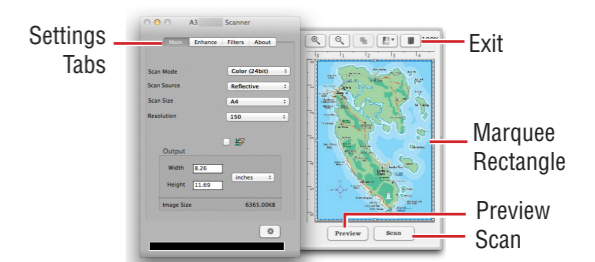
[Mac]

This scanner includes the TWAIN interface for use within TWAIN-compliant graphic applications such as ImageAcquire, Photoshop. Following is an example of using ImageAcquire.

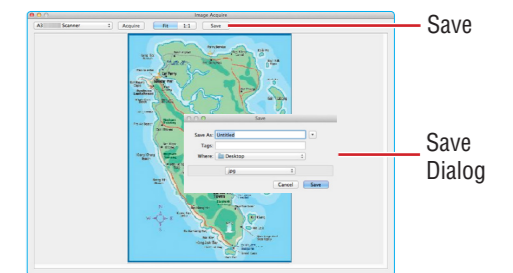
1. Open "Finder", and then click "Applications". Find ImageAcquire (🗂️) icon in the Application folder, and then double click on it.
2. Select the Scanner model from the Image Acquire window, and then click "Acquire" to open the TWAIN interface.



3. Make the necessary changes in the settings tabs, then click "Preview". Repeat this step until you are satisfied with the preview results. *You can resize the scan area by dragging the Marquee Rectangle to make selection in the Preview window.*



4. Click "Scan" to scan the final image. *The scanned image will be imported into the ImageAcquire window. Click "Save" to open the Save Dialog to save the image.*



8 TROUBLESHOOTING

The "Found New Hardware" appears on your Windows screen.

- Unplug the USB Cable from the computer, and click "Cancel" button to close it. Ensure to install Scanner Driver before connecting the Scanner.
- **Cannot scan.**
- Make sure that the USB Cable between the Scanner and your computer is connected firmly.
- Make sure the Scanner is turned on.
- Make sure the correct scanner is selected in the select source field.

The scanned image becomes dirty.

- Check if the document is written in lead pencil or wet ink.
- Make sure to clean the Scanner's Flatbed Glass frequently.

Scanning speed is very slow.

- Scanning takes longer than usual when you scan at high resolution and large size.
- Set a lower resolution to prioritize the scanning speed.
- Scanning with multiple image processing selected can slow down the scanning speed.

How to uninstall the drivers and software.

When you need to remove the scanner drivers and software from your computer, uninstall as following:

1. Unplug the USB Cable connecting from the computer.
2. Exit all running applications.
3. For Windows, go to the "Start" menu, select "(All) Programs", "A3FxxxN", and then click "Uninstall". Follow the on-screen instructions to remove the Scanner Driver.

For Mac, insert the Installation CD, then double click on the uninstall icon in the Scanner Driver folder to remove it. Drag ImageAcquire and ScanMust icon from the "Application" folder to Trash.

Cannot add the Scanner to Photoshop.

- You need to install the Photoshop TWAIN plug-in prior to use. Refer to "Using TWAIN in Photoshop CS4-CC version.pdf" in the Installation CD.