



Air Conditioning Technical Data

Wall mounted unit



EEDEN16

FTXJ-MS, FTXJ-MW

TABLE OF CONTENTS

FTXJ-MS, FTXJ-MW

1	Features	2
	FTXJ-MS	
	FTXJ-MW.....	2
2	Specifications	4
	Technical Specifications	4
	Electrical Specifications	5
3	Options	6
4	Dimensional drawings	7
5	Centre of gravity	8
6	Piping diagrams	9
7	Wiring diagrams	11
	Wiring Diagrams - Single Phase	11
8	Sound data	12
	Sound Pressure Spectrum	12

1 Features

1 - 1 FTXJ-MS, FTXJ-MW

- Seasonal efficiency values up to A+++ in cooling and heating thanks to its up-to-date technology and built-in intelligence.
- Choosing for an R-32 product, reduces the environmental impact with 68% compared to R-410A and leads directly to lower energy consumption thanks to its high energy efficiency
- Remarkable blend of iconic design and engineering excellence with an elegant finish in silver and anthracite or in matt crystal white
- Daikin Emura has been awarded many times, thanks to its excellent design
- Silver allergen removal and air purifying filter: captures allergens such as pollen and dust mites. The filter suppresses pollen and mites for 99% or more.
- Online controller (optional): control your indoor from any location with an app, via your local network or internet and keep an overview on your energy consumption
- Whisper quiet in operation: the operating of the unit can hardly be heard. The sound pressure level goes down to 19dBA!



- | | | | | | | | | |
|---------------------------------|---|------------------------------|-------------------------------|-----------------------------------|----------------------|-----------------------|---------------------------|-----------------|
| | | | | | | | | |
| Practically inaudible | Silver allergen removal and air purifying filter | Econo mode | 2 area intelligent eye | Energy saving during standby mode | Night set mode | Fan only | Comfort mode | Powerful mode |
| | | | | | | | | |
| Auto cooling-heating changeover | Whisper quiet | Indoor unit silent operation | Outdoor unit silent operation | 3-D air flow | Vertical auto swing | Horizontal auto swing | Auto fan speed | Fan speed steps |
| | | | | | | | | |
| Dry programme | Titanium apatite photocatalytic air purification filter | Weekly timer | 24 hour timer | Infrared remote control | Wired remote control | Centralised control | Online controller via app | Auto-restart |
| | | | | | | | | |
| Self diagnosis | Multi model application | | | | | | | |

2 Specifications

2-1 Technical Specifications				FTXJ20MS	FTXJ25MS	FTXJ35MS	FTXJ50MS	FTXJ20MW	FTXJ25MW	FTXJ35MW	FTXJ50MW	
Power input - 50Hz	Cooling	Nom.	kW	0.023		0.033		0.023		0.033		
	Heating	Nom.	kW	0.031	0.033	0.042	0.043	0.031	0.033	0.042	0.043	
Casing	Colour			Silver				White				
Dimensions	Unit	Height/Width/Depth	mm	303/998/212								
	Packed unit	Height/Width/Depth	mm	322/1,101/389								
Weight	Unit		kg	12								
	Packed unit		kg	16								
Packing	Weight		kg	4								
Heat exchanger	Length		mm	610								
	Rows	Quantity		2								
	Fin pitch		mm	1.2								
	Stages	Quantity		18								
	Tube type		Ø6,35 Hi-XB									
	Fin	Type		Multi slit fin								
Air filter	Type		Removable / washable / mildew proof									
Fan	Type		Cross flow fan									
	Air flow rate	Cooling	High	m³/min	8.9		10.9		8.9		10.9	
				cfm	313		385		313		385	
			Nom.	m³/min	6.6	7.8	8.9	6.6	7.8	8.9		
				cfm	234	276	313	234	276	313		
		Low	m³/min	4.4	4.8	6.8	4.4	4.8	6.8			
			cfm	155	168	239	155	168	239			
		Silent operation	m³/min	2.6	2.9	3.6	2.6	2.9	3.6			
			cfm	91	102	128	91	102	128			
	Heating	High	m³/min	10.2	11.0	12.4	12.6	10.2	11.0	12.4	12.6	
			cfm	361	388	438	446	361	388	438	446	
		Nom.	m³/min	8.4	8.6	9.6	10.5	8.4	8.6	9.6	10.5	
			cfm	298	303	340	372	298	303	340	372	
		Low	m³/min	6.3	6.9	8.1	6.3	6.9	8.1			
			cfm	223	245	284	223	245	284			
		Silent operation	m³/min	3.8	4.1	5.0	3.8	4.1	5.0			
cfm			133	144	176	133	144	176				
Fan motor	Model		KFD-280-40-8G1									
	Speed	Steps		5 + silent, + auto								
		Cooling	High/Medium/Low/Silent operation	rpm	1,440/1,140/840/600		1,710/1,300/890/640	1,710/1,440/1,160/740	1,440/1,140/840/600		1,710/1,300/890/640	1,710/1,440/1,160/740
	Heating	High/Medium/Low/Silent operation	rpm	1,620/1,380/1,100/760	1,720/1,400/1,100/760	1,910/1,540/1,180/800	1,940/1,660/1,330/920	1,620/1,380/1,100/760	1,720/1,400/1,100/760	1,910/1,540/1,180/800	1,940/1,660/1,330/920	
Output	Rated	W	29									
Sound power level	Cooling		dBA	54		59	60	54		59	60	
	Heating		dBA	56		59	60	56		59	60	
Sound pressure level	Cooling	High/Nom./Low/Silent operation	dBA	38/32/25/19		45/34/26/20	46/40/35/32	38/32/25/19		45/34/26/20	46/40/35/32	
	Heating	High/Nom./Low/Silent operation	dBA	40/34/28/19	41/34/28/19	45/37/29/20	47/41/35/32	40/34/28/19	41/34/28/19	45/37/29/20	47/41/35/32	
Control systems	Infrared remote control		ARC466A9									
Temperature control	Microcomputer control											
Air direction control	Right, Left, Horizontal, Downward											

2 Specifications

- Standard Accessories : Operation manual; Quantity : 1;
- Standard Accessories : Installation manual; Quantity : 1;
- Standard Accessories : Infrared remote control; Quantity : 1;
- Standard Accessories : Batteries; Quantity : 2;
- Standard Accessories : Remote control holder; Quantity : 1;
- Standard Accessories : Fixing screws for mounting plate; Quantity : 5;
- Standard Accessories : Mounting plate; Quantity : 1;
- Standard Accessories : Titanium apatite photocatalytic air purification filter; Quantity : 2;
- Standard Accessories : Fixing screw for remote controller holder; Quantity : 2;
- Standard Accessories : Indoor unit fixing screws; Quantity : 2;
- Standard Accessories : Screw cover; Quantity : 2;
- Standard Accessories : Wlan adapter kit;
- Standard Accessories : Titanium apatite filters; Quantity : 2;

2-2 Electrical Specifications				FTXJ20MS	FTXJ25MS	FTXJ35MS	FTXJ50MS	FTXJ20MW	FTXJ25MW	FTXJ35MW	FTXJ50MW
Power supply	Name			V1							
	Phase			1~							
	Frequency		Hz	50							
	Voltage		V	220-240							
Current	Nominal running current (RLA) - 50Hz	Cooling	A	0.12		0.16		0.12		0.16	
		Heating	A	0.15	0.16	0.21	0.22	0.15	0.16	0.21	0.22

Notes

SL: The silent fan level of the air flow rate setting

3 Options

3 - 1 Options

FTXJ-MW
FTXJ-MS

Option kit	FTXJ-MW_S	Remark
Wired remote control	BRC073A1	
Extension cord for wired remote control (3m)	BRCW901A03	
Extension cord for wired remote control (5m)	BRCW901A08	
Centralised control board (up to 5 rooms)	KRC72A	
Wiring adaptor (normal open contact - normal open pulse contact)	KRP413AB15	
Interface adaptor for DIII-NET	KRP928BB25	
Central remote control	DCS302CA51	
Unified ON/OFF controller	DCS301BA51	
Schedule timer	DST301BA51	
Titanium apatite photocatalytic air-purifying filter with frame	KAF970AA46	①
Anti-theft protection for remote control	KKF910AA4	

Notes

- R32 models

Legend

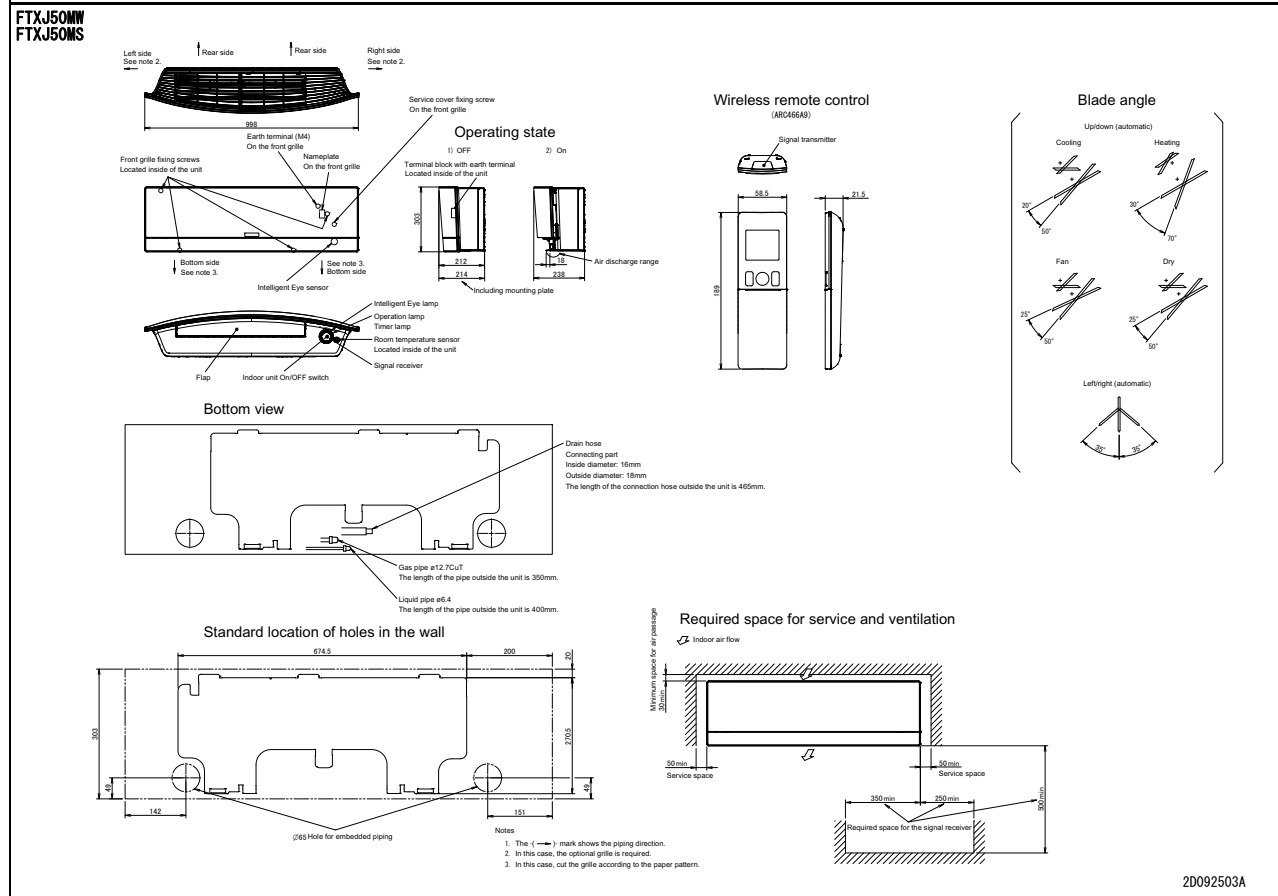
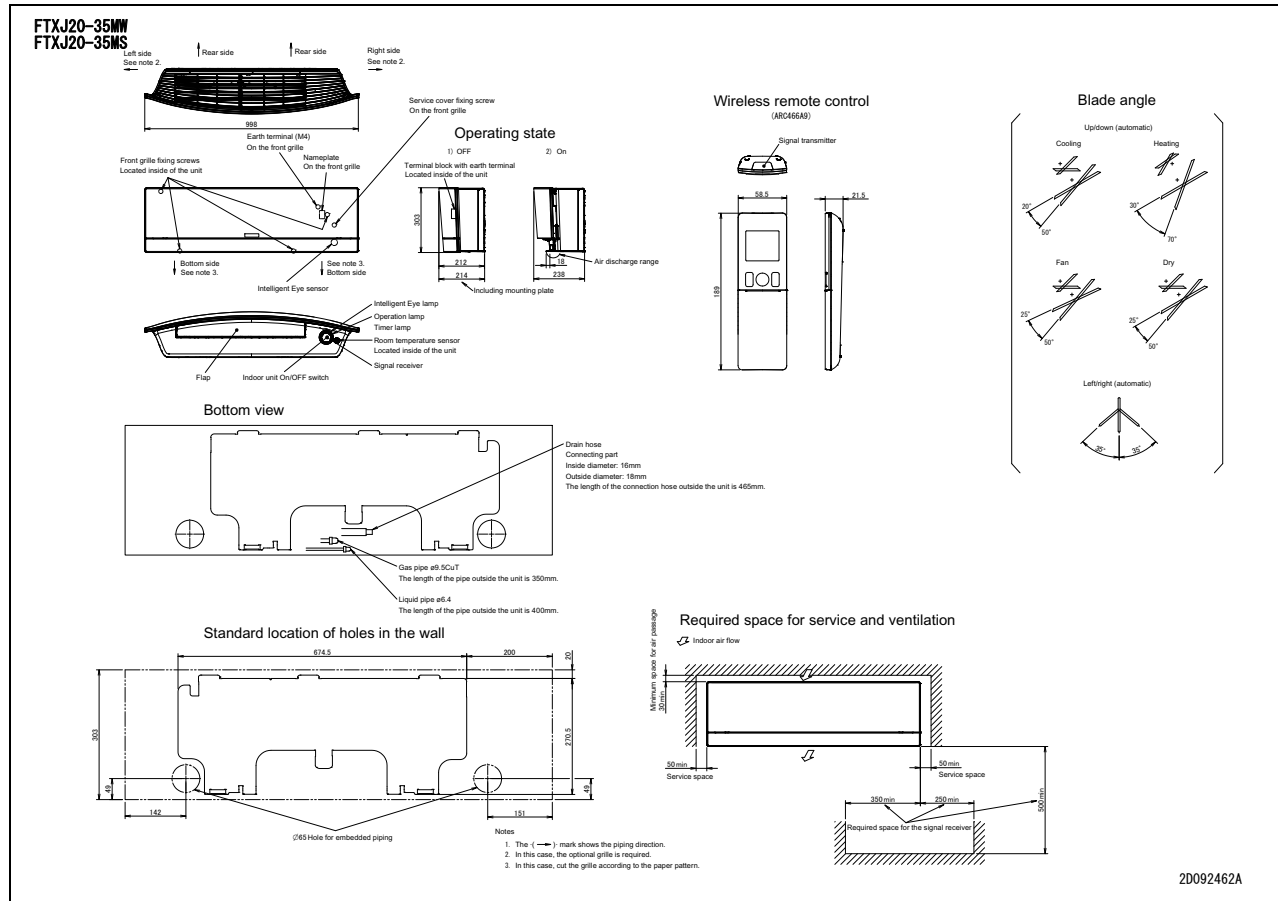
- ① Three-dimensional knitted fabric (42x255mm) + activated charcoal net

3D095173C

4 Dimensional drawings

4 - 1 Dimensional Drawings

4

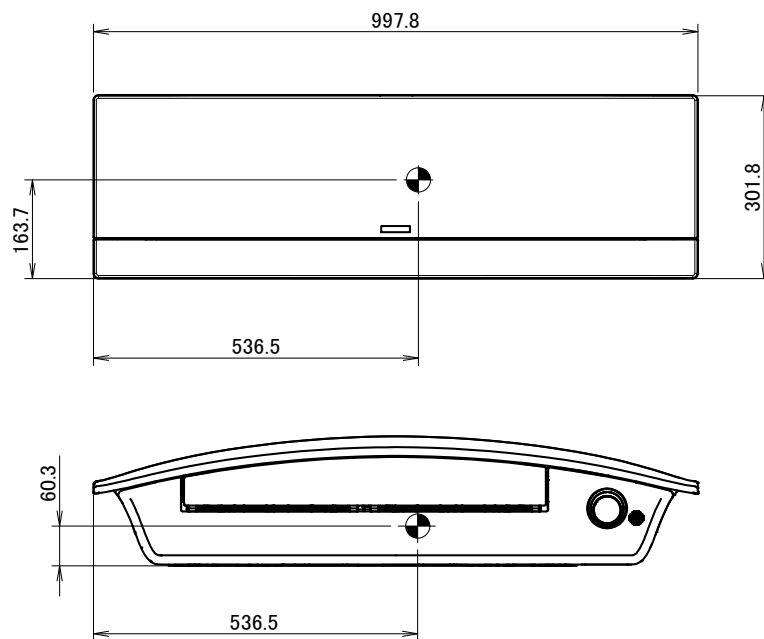


6

5 Centre of gravity

5 - 1 Centre of Gravity

FTXJ-MW
FTXJ-MS



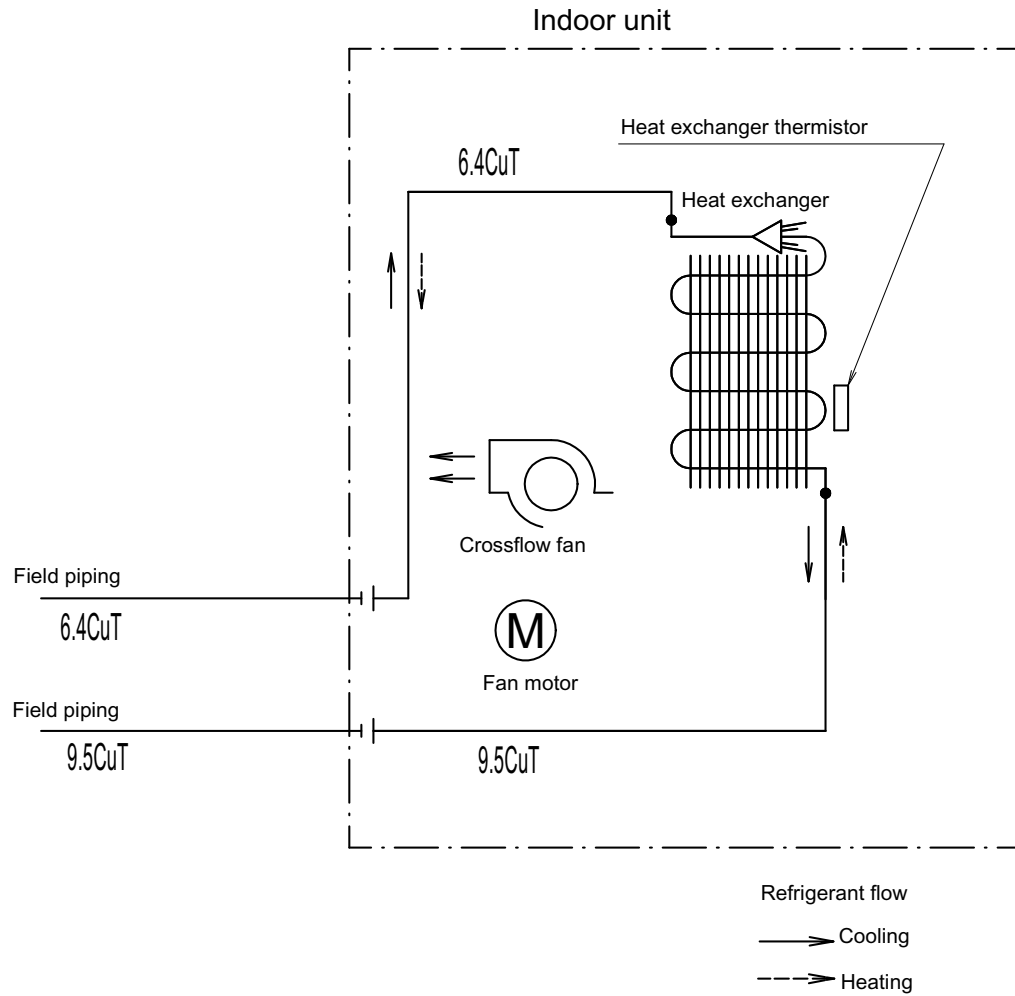
4D086660D

6 Piping diagrams

6 - 1 Piping Diagrams

6

FTXJ20-35MW
FTXJ20-35MS

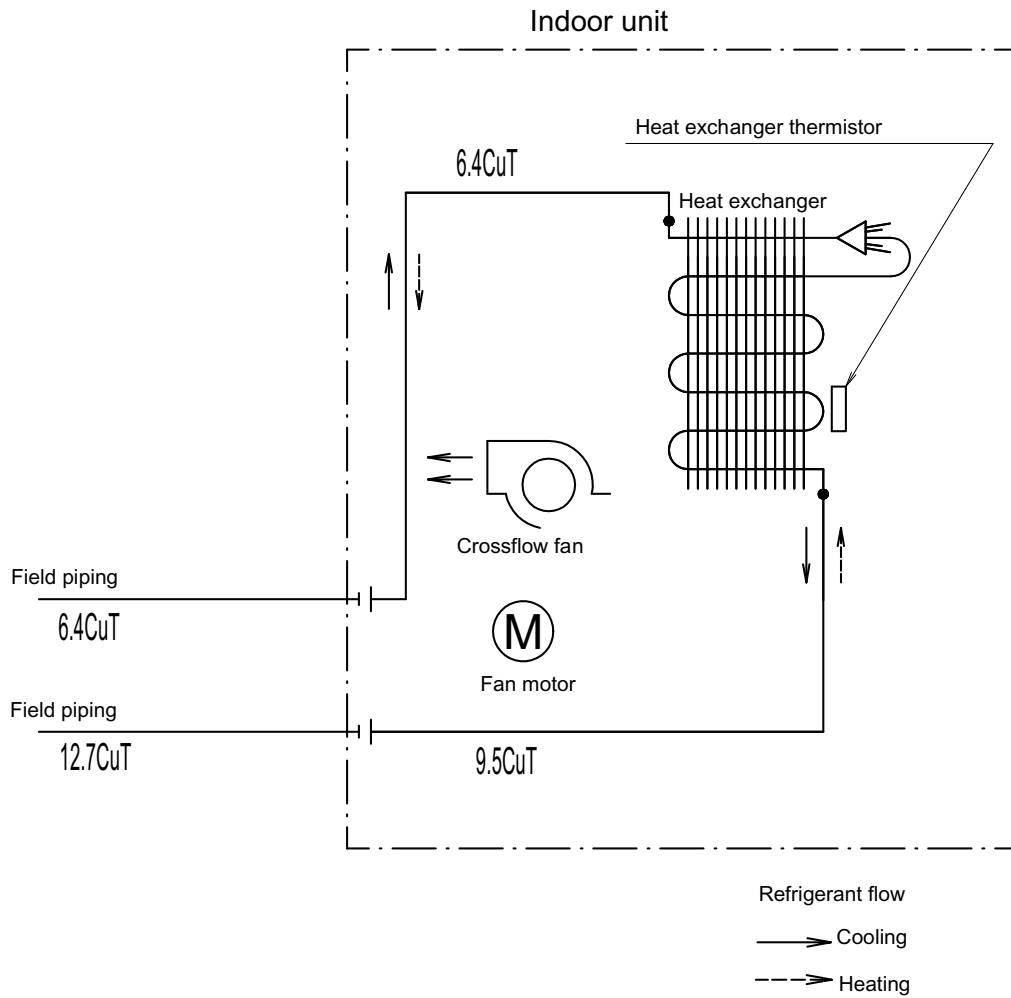


4D085645D

6 Piping diagrams

6 - 1 Piping Diagrams

FTXJ50MW
FTXJ50MS

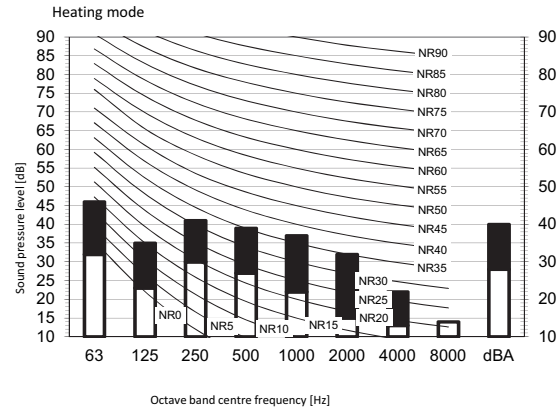
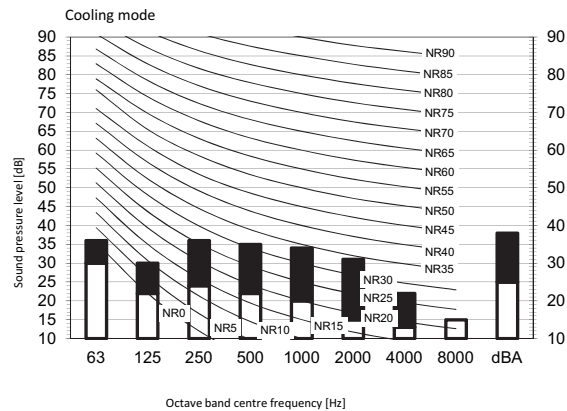


4D092075A

8 Sound data

8 - 1 Sound Pressure Spectrum

FTXJ20MW
FTXJ20MS



Legend

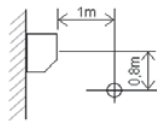
dBA = A-weighted sound pressure level (A scale according to IEC).

A Scale

B High-tap

C Low-tap

Location of microphone



Cooling		Total dB	
A	B	C	
dBA	38	25	

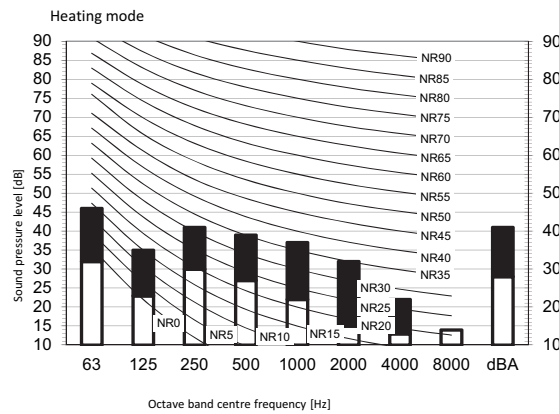
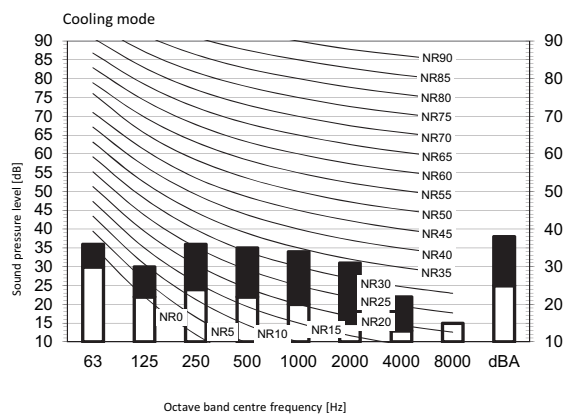
Heating		Total dB	
A	B	C	
dBA	40	28	

Notes

1. Operating conditions: power source 220-240 V/220 V 50/60 Hz; JIS standard
2. Background noise already taken into account.
3. Operating noise varies depending on operation and ambient conditions.
4. The operation noise measuring method is in accordance with JISC9612.
5. Measuring location: anechoic chamber

3D092362A

FTXJ25MW
FTXJ25MS



Legend

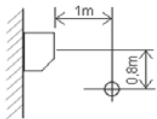
dBA = A-weighted sound pressure level (A scale according to IEC).

A Scale

B High-tap

C Low-tap

Location of microphone



Cooling		Total dB	
A	B	C	
dBA	38	25	

Heating		Total dB	
A	B	C	
dBA	41	28	

Notes

1. Operating conditions: power source 220-240 V/220 V 50/60 Hz; JIS standard
2. Background noise already taken into account.
3. Operating noise varies depending on operation and ambient conditions.
4. The operation noise measuring method is in accordance with JISC9612.
5. Measuring location: anechoic chamber

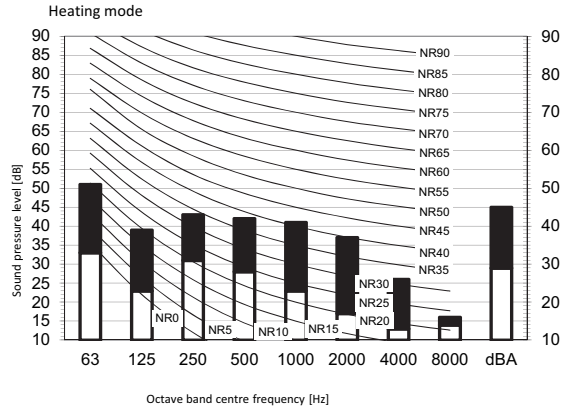
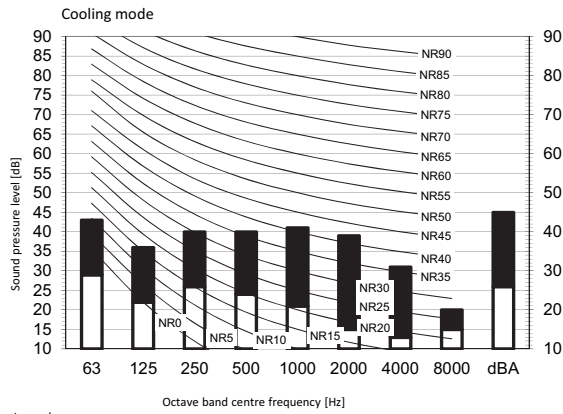
3D092361A

8 Sound data

8 - 1 Sound Pressure Spectrum

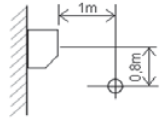
8

FTXJ35MW
FTXJ35MS



Legend
dBA = A-weighted sound pressure level (A scale according to IEC).

A Scale
B High-tap
C Low-tap
Location of microphone



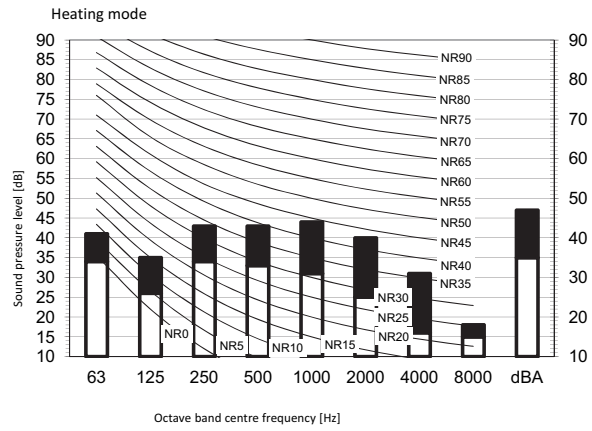
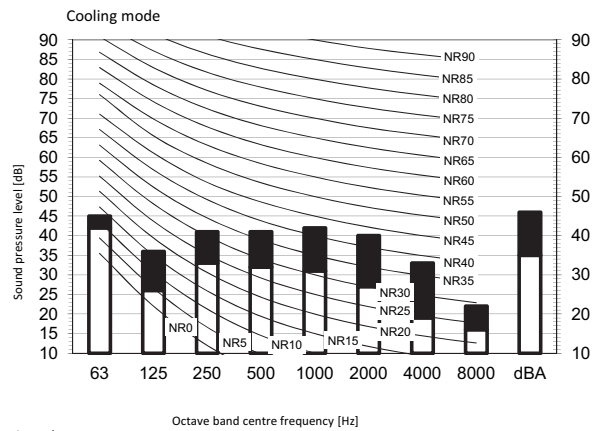
Cooling		Total dB	
A	B	C	
dBA	45	26	

Heating		Total dB	
A	B	C	
dBA	45	29	

- Notes
1. Operating conditions: power source 220-240 V/220 V 50/60 Hz; JIS standard
 2. Background noise already taken into account.
 3. Operating noise varies depending on operation and ambient conditions.
 4. The operation noise measuring method is in accordance with JISC9612.
 5. Measuring location: anechoic chamber

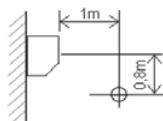
3D092359A

FTXJ50MW
FTXJ50MS



Legend
dBA = A-weighted sound pressure level (A scale according to IEC).

A Scale
B High-tap
C Low-tap
Location of microphone



Cooling		Total dB	
A	B	C	
dBA	46	35	

Heating		Total dB	
A	B	C	
dBA	47	35	

- Notes
1. Operating conditions: power source 220-240 V/220 V 50/60 Hz; JIS standard
 2. Background noise already taken into account.
 3. Operating noise varies depending on operation and ambient conditions.
 4. The operation noise measuring method is in accordance with JISC9612.
 5. Measuring location: anechoic chamber

3D092360A



Daikin Europe N.V. participates in the Eurovent Certification programme for Liquid Chilling Packages (LCP), Air handling units (AHU), Fan coil units (FCU) and variable refrigerant flow systems (VRF) Check ongoing validity of certificate online: www.eurovent-certification.com or using: www.certiflash.com

The present leaflet is drawn up by way of information only and does not constitute an offer binding upon Daikin Europe N.V.. Daikin Europe N.V. has compiled the content of this leaflet to the best of its knowledge. No express or implied warranty is given for the completeness, accuracy, reliability or fitness for particular purpose of its content and the products and services presented therein. Specifications are subject to change without prior notice. Daikin Europe N.V. explicitly rejects any liability for any direct or indirect damage, in the broadest sense, arising from or related to the use and/or interpretation of this leaflet. All content is copyrighted by Daikin Europe N.V.

BARCODE

Daikin products are distributed by:

