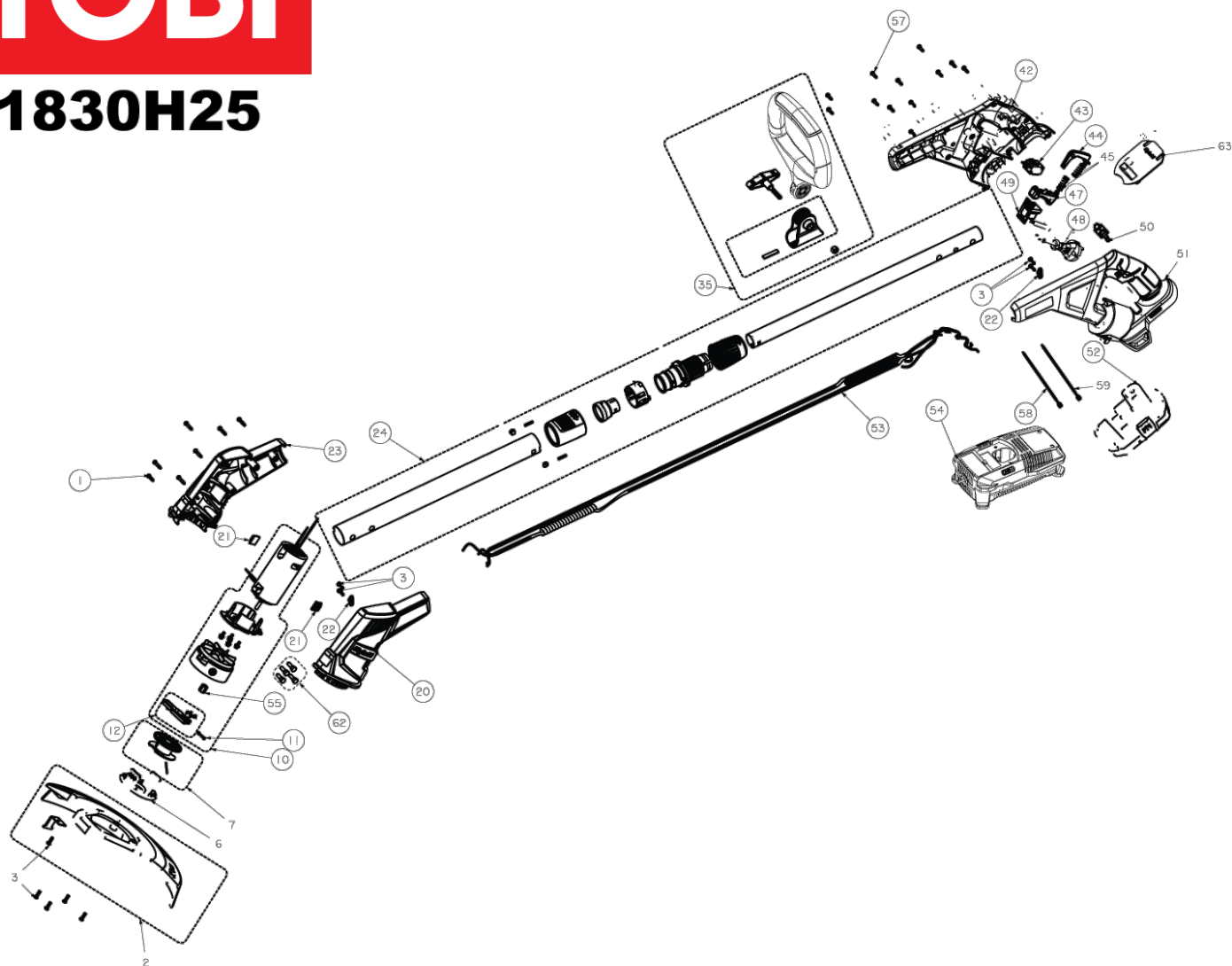


RLT1830H25 C.BORD.HYB. 18V 2.5A IN2

5133002224 - RLT1830H25 - 4000444254

RYOBI

RLT1830H25



090977003

| Position | Quantité | Désignation | Référence | EAN |
|----------|----------|-------------------------------------|------------|---------------|
| 1_001 | 6 | VIS | 5131035561 | 4058546149727 |
| 1_002 | 1 | CARTER PROTECTION | 5131035562 | 4058546149734 |
| 1_003 | 9 | VIS | 5131034734 | 4058546143275 |
| 1_006 | 1 | COUVERCLE | 5131034743 | 4058546143367 |
| 1_010 | 1 | MOTEUR | 5131035564 | 4058546149741 |
| 1_011 | 1 | RESSORT | 5131034745 | 4058546143381 |
| 1_012 | 1 | PLAQUE | 5131035566 | 4058546149758 |
| 1_020 | 1 | CARTER | 5131035567 | 4058546149765 |
| 1_021 | 2 | PLAQ.EN CAOUTCHOUC | 5131035568 | 4058546149772 |
| 1_022 | 2 | COLLIER | 5131035569 | 4058546149789 |
| 1_023 | 1 | CARTER | 5131035570 | 4058546149796 |
| 1_024 | 1 | ARBRE | 5131035571 | 4058546149802 |
| 1_035 | 1 | POIGNEE | 5131035572 | 4058546149819 |
| 1_042 | 1 | POIGNEE | 5131035573 | 4058546149826 |
| 1_043 | 1 | COMMUTATEUR | 5131035574 | 4058546149833 |
| 1_044 | 1 | VERROUILLAGE | 5131035456 | 4058546148782 |
| 1_045 | 2 | RESSORT | 5131035454 | 4058546148768 |
| 1_047 | 1 | GACHETTE | 5131035575 | 4058546149840 |
| 1_048 | 1 | CABLE | 5131035576 | 4058546149857 |
| 1_049 | 1 | CONDENSATEUR | 5131035577 | 4058546149864 |
| 1_050 | 1 | PLAQUE | 5131035461 | 4058546011659 |
| 1_051 | 1 | POIGNEE | 5131035578 | 4058546149871 |
| 1_053 | 1 | CABLE | 5131035579 | 4058546149888 |
| 1_054 | 1 | CHARGEUR 1HR 230V-AC 14,4-18VDC EU | 5131031689 | 4058546129484 |
| 1_055 | 1 | BAGUE | 5131035580 | 4058546149895 |
| 1_057 | 12 | VIS | 5131035581 | 4058546149901 |
| 1_058 | 1 | CABLE | 5131035582 | 4058546149918 |
| 1_059 | 1 | CABLE | 5131035583 | 4058546149925 |
| 1_062 | 1 | CONNECTEUR | 5131035584 | 4058546149932 |
| 1_063 | 1 | PORTE | 5131035585 | 4058546149949 |
| 1_007 | 1 | RAC124 BOBINE+COUVERCLE C.BORD. 18V | 5132002433 | 4892210813473 |