

Thank you for purchasing this Sony product.

After following this step by step guide you will be able to:

Insert Batteries into the Remote Control.

Connect the Display Unit to the Media Receiver Unit.

Connect the AC Cable, Aerial and VCR to your TV.

Select the language of the menu screens.

Select the country in which you wish to operate the set.

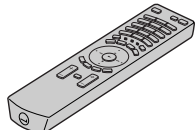
Set the current time.

Tune your TV.

Change the broadcast channels into a different order.

View TV Programmes.

One Remote Control (RM-972):



One Coaxial Cable:



Do not remove ferrite cores.

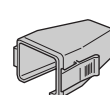
Two Mains Leads (Type C-4):



Do not remove ferrite cores.

⚠ Use these mains leads (with safety earth) if you use the set outside the United Kingdom.

One Mains Plug holder:



Two size AAA batteries (R03 Type):



One Cleaning Cloth:



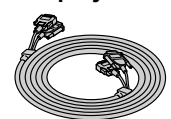
Two Mains Leads (Type BF):



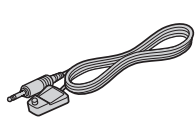
Do not remove ferrite cores.

⚠ Use these mains leads (with safety earth) if you use the set in the United Kingdom.
• See "NOTICE FOR CUSTOMERS IN THE UNITED KINGDOM" on page 2 of the instruction manual when using the mains leads.
• These mains leads may not be supplied depending on the country.

One Display Interface Cable:



One AV Mouse:



Two Mains Leads (Type C-5):



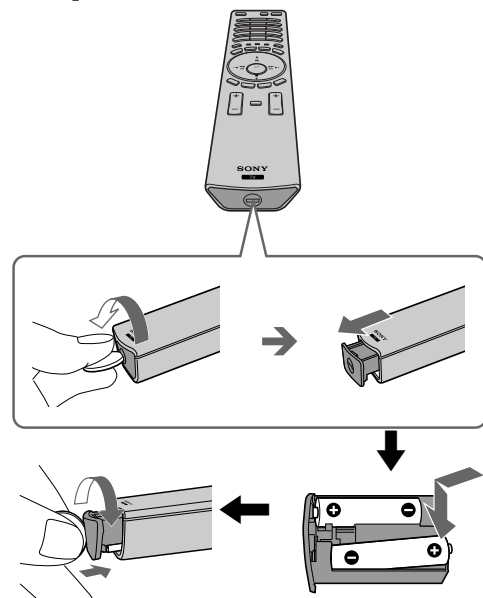
Do not remove ferrite cores.

⚠ Use these mains leads (with safety earth) if you use the set in the Swiss Confederation.
• These mains leads may not be supplied depending on the country.

Inserting Batteries into the Remote Control

2

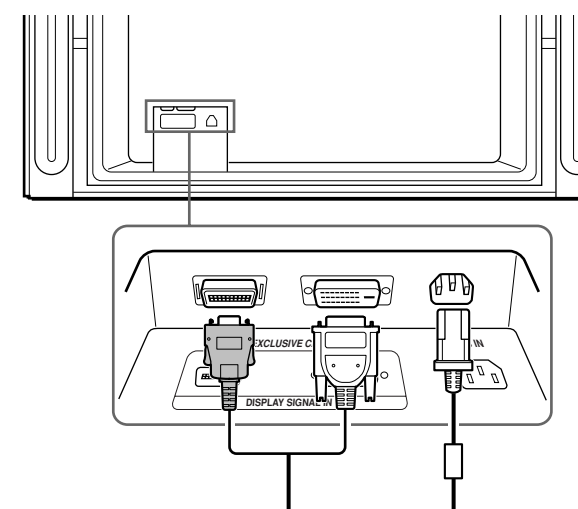
⚠ Make sure you insert the supplied batteries using the correct polarity. Always remember to dispose of used batteries in an environmentally friendly way.



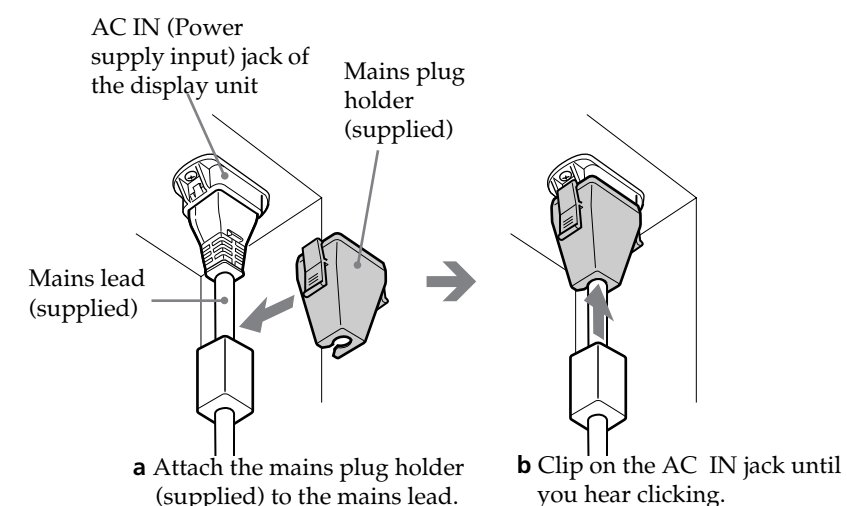
- ⓘ Use the supplied display interface cable.
- ⓘ Use the supplied mains lead for the display unit (Type C-4, Type BF or Type C-5, see step 1).

1 Connect the supplied display interface cable and the supplied mains lead for the display unit to the display unit.

⚠ Do not connect to the mains before all connections are completed.



2 Secure the mains plug to the display's AC IN jack.

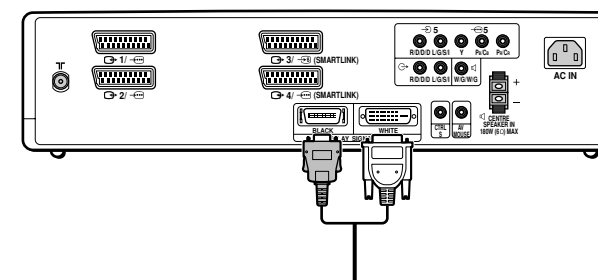


ⓘ To unplug the mains lead pull down the mains plug holder by pushing in both sides of the holder, then pull out the plug.

3 Install the display unit using the specified wall-mount bracket or stand.

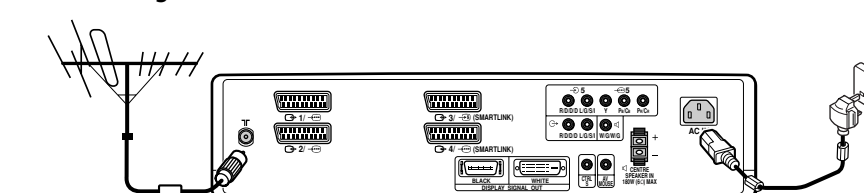
ⓘ Before installing the display unit, check the installation instructions of your wall-mount bracket or stand.

4 Connect the supplied display interface cable to the media receiver unit.



- ⓘ Use the supplied mains lead for the media receiver unit (Type C-4, Type BF or Type C-5, see step 1).
- ⓘ Use the supplied coaxial cable for aerial connection.
- Other connecting cables are not supplied.

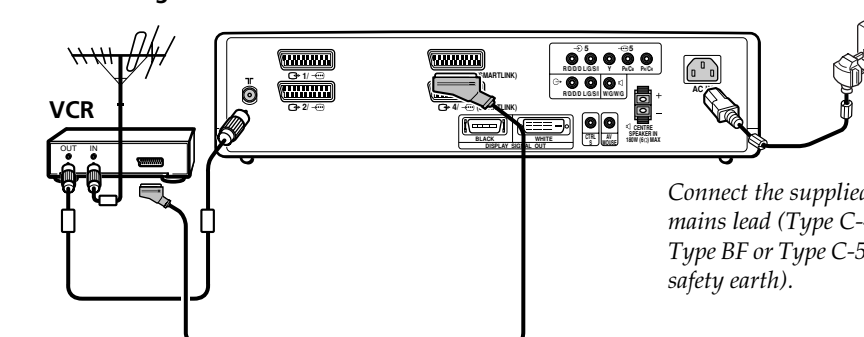
Connecting an aerial



Connect the supplied coaxial cable.

Connect the supplied mains lead (Type C-4, Type BF or Type C-5, with safety earth).

Connecting a VCR with an aerial



Scart lead is optional.

Connect the supplied mains lead (Type C-4, Type BF or Type C-5, with safety earth).

- ⓘ The Scart lead is optional, however if you use a Scart lead to connect your VCR it can improve picture and sound quality when using it.
- For more details of VCR connection, please refer to the section "Connecting Optional Equipment" on page 61 of the instruction manual.

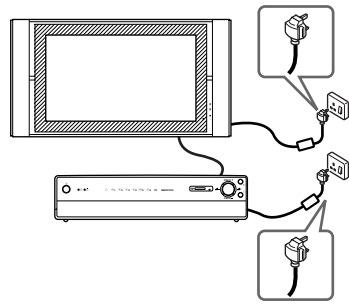
⚠ If you do not have a Scart lead, after automatically tuning the TV, tune in the VCR test signal to the TV programme number "0" by using the "Manual Programme Preset" option. (for details of how to manually programme these presets, see page 39, step A of the instruction manual). Refer to your VCR instruction manual to find out how to find the output channel of your VCR.



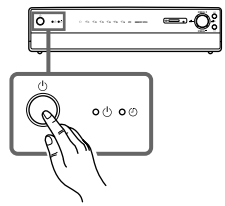
Switching on the set

5

1 Connect the display unit and media receiver unit to the mains (100 - 240V AC; 50/60Hz for the display unit, 220 - 240V AC; 50/60Hz for the media receiver unit).



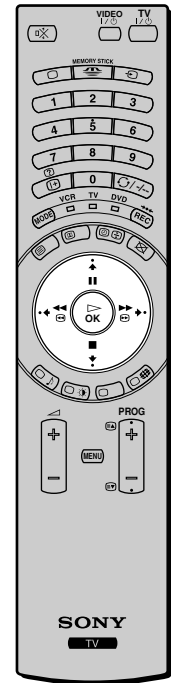
2 The first time that the TV set is connected, it is usually turned on. If the TV is off, press the Power switch on the media receiver unit to turn on the TV.



Selecting the language of the menu screens, the country and setting the current time

This TV set works with menu screens. By following the instructions below, you can select the desired language of the menu screens, the country in which you wish to operate the TV set and set the current time.

5

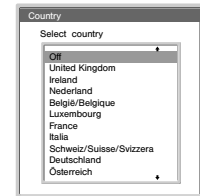


The first time you press the Power switch, a Language menu displays automatically on the TV screen.



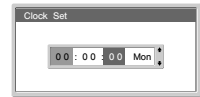
1 Press the \blacktriangledown / \blacktriangle / \blackleftarrow or \blackrightarrow button on the remote control to select the language, then press the OK button to confirm your selection.
From now on all the menus will appear in the selected language.

2 The Country menu appears automatically on the TV screen. Press the \blacktriangledown or \blacktriangle button to select the country in which you will operate the TV set, then press the OK button to confirm your selection.



- i** • If the country in which you want to use the TV set does not appear in the list, select "off" instead of a country.
- If you change the country selection, Clock Set should always be performed next.

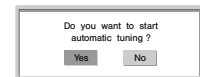
3 The Clock Set menu appears on the TV screen.



- a) Press \blacktriangledown or \blacktriangle to set the hour, then press \blackrightarrow .
- b) Press \blacktriangledown or \blacktriangle to set the minutes, then press \blackrightarrow .
- c) Press \blacktriangledown or \blacktriangle to set the day of a week, then press OK at the time signal. The clock starts.

i If you adjust the clock, Auto Tuning should always be performed next.

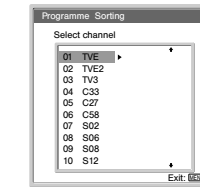
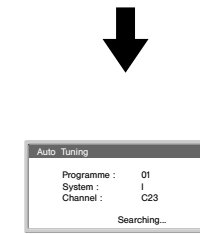
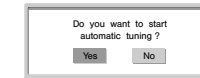
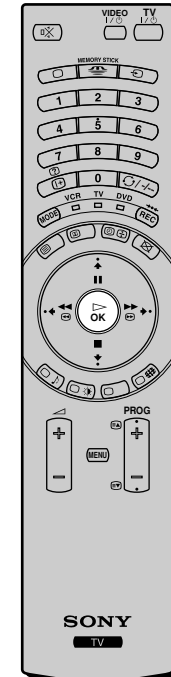
The Auto Tuning menu appears on the TV screen.



6

Automatically Tune the TV

You need to tune the TV to receive channels (TV Broadcast). By following the instructions below, this set automatically searches and stores all available channels for you.



1 Press the OK button on the remote control to select Yes.

2 The TV starts to automatically search and store all available broadcast channels for you.

! This procedure could take some minutes. Please be patient and do not press any buttons while the auto tuning is in progress, otherwise the auto tuning will not be completed.

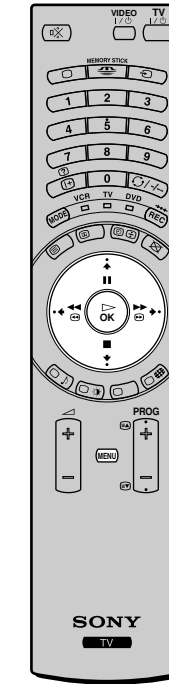
! If no channels were found during the auto tuning process then a new menu appears automatically on the screen asking you to connect the aerial. Please connect the aerial (refer to the step 4) and press OK. The auto tuning process will start again.

When the auto tuning is finished, the Programme Sorting menu appears on the screen.

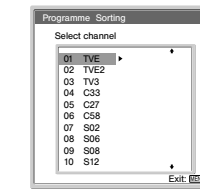
7

Changing the Programme Order of the broadcast channels

By following the instructions below, you can rearrange the order in which the broadcast channels appear on the screen



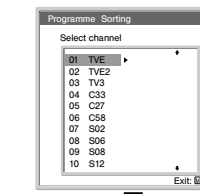
a) If you wish to keep the broadcast channels in the tuned order:



Press the MENU button on the remote control to exit and return to the normal TV screen.

! Your set is now ready for use.

b) If you wish to store the broadcast channels in a different order:



1 Press the \blacktriangledown or \blacktriangle button to select the programme number with the channel (TV Broadcast) you wish to rearrange, then press the \blackrightarrow button.

2 Press the \blacktriangledown or \blacktriangle button to select the new programme number position for your selected channel (TV Broadcast), then press \blackleftarrow .

i The selected broadcast channel now moves to its new programme position and the other broadcast channels move accordingly.

3 Repeat steps 1) and 2) if you wish to change the order of the other channels.

4 Press the MENU button on the remote control to exit and return to the normal TV screen.

! The TV set is now ready for use.

8

Your television stations are now stored in your television's memory.