

# eco Manager Quick Setup Guide (for Windows Vista/XP/2000 only)

The eco Manager for HD lets you put your DriveStation into Sleep mode to save power. This software is recommended for hard drives that are not accessed for periods of time.

**NOTES** This software only works when the drive is connected via USB.

In "Sleep" mode, the access LED on the drive will still be on, and the product's icon will still be displayed in My Computer.

## You can:

- Put your hard drive into Sleep mode, reducing power consumption.
- Put your hard drive in Standby mode after a specified period of inactivity.
- Use this utility with more than one hard drive.

## Installation

- 1** Run "DriveNavi.exe" from either the software CD or from the DriveStation.  
The installation wizard will open.
- 2** Click [Begin Installation]-[Additional Software Installation]-[EcoManager] in order.
- 3** Eco Manager will be installed and enabled.

## Notes:

---

### ■ for all Windows PCs

- Do not put a hard drive into sleep mode while the access LED on the drive is blinking.
- To use eco Manager with more than one hard drive, install it separately from the disk that came with each drive. Eco Manager is different for each product, so you must install it separately for each product.

For easy identification of each of your hard drives, it's recommended that you give a volume label such as "buffalo" to your hard drive.

### ■ for Windows Vista

- A warning message screen may be displayed when booting your PC or restarting your PC. If it is displayed, select [Continue].
- If applications access your hard drive, it will wake up automatically.
- The hard drive may never go to sleep in Sleep mode if you are running application software that accesses it regularly, such as anti-virus software.

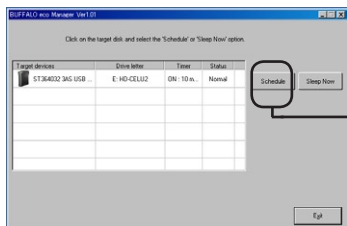
## Standby mode

---

In Standby mode, the drive automatically goes into Standby mode after a period of inactivity. To put the drive into Standby mode:

- 1 Click [Start]-[All Programs]-[BUFFALO]-[eco Manager for HD]-[eco Manager].

2



Click [Schedule] for the hard drive you want to put in Standby mode.

3

In the 'Configure time settings' window, select the desired period and click [Close].

If the hard drive is not accessed for the period set here, it will go into Sleep mode.

4

If the screen is back to the one in Step 2, click [Exit].

You can see the time you specified in [Timer] column.

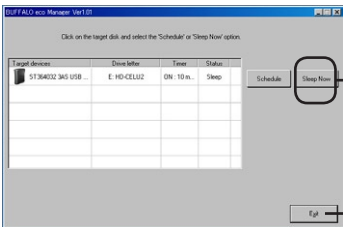
Standby mode is now configured.

# Sleep mode

To put your hard drive in Sleep mode immediately:

1 Click [Start]-[All Programs]-[BUFFALO]-[eco Manager for HD]-[eco Manager].

2



① Click [Sleep Now] on the hard drive you want to put into Sleep mode.

② Click [Exit].

**NOTES** If a hard drive is in Sleep mode, “Sleep” will be shown in its ‘Status’ Column.

**CAUTION** DO NOT press the “Sleep Now” button while transferring data between the Drive Station and PC. Otherwise your PC may become unstable depending on its configuration.

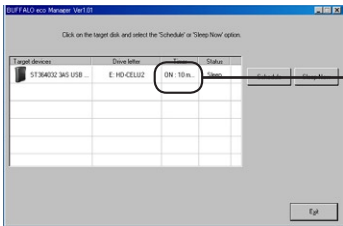
Your hard drive is now in Sleep mode.

# Check Status

You can check the status of your hard drive in Sleep mode by following procedure. If you set a timer, use following steps to view the time:

1 Click [Start]-[All Programs]-[BUFFALO]-[eco Manager for HD]-[eco Manager].

2



It is displayed as “Sleep” if the hard drive is in Standby mode.

**NOTES** If Standby mode is configured, then the interval is displayed in the ‘Timer’ column.

**CAUTION** Status is not updated automatically. To recheck status, restart eco Manager

# How to uninstall

You can uninstall the eco Manager if you do not need it any more by selecting [Start]-[Programs]-[Buffalo]-[eco Manager for HD]-[Uninstall].