

**2 slice 'Manhattan' toaster**

Please read and keep these instructions

GB

F

D

E

NL

P

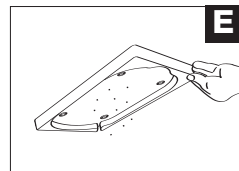
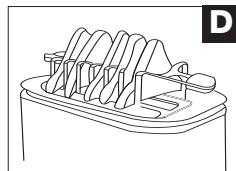
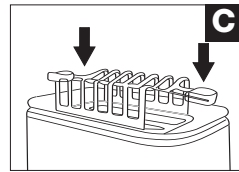
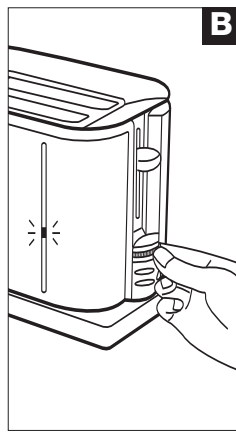
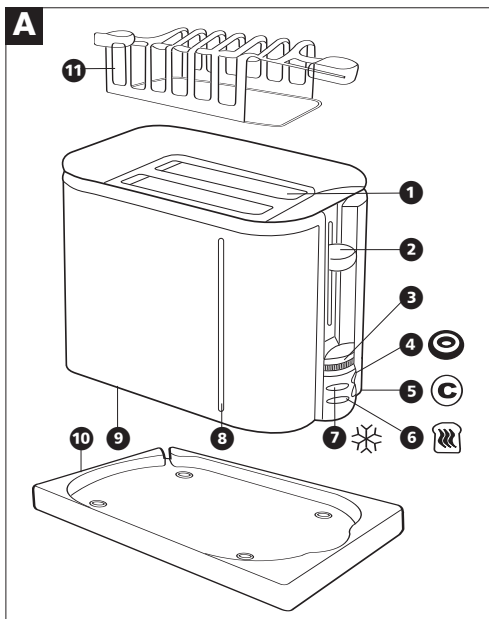
I

DK

S

PL

RU



GB

## Getting the best from your new toaster...

### Safety first

Do not touch metal top or sides of the toaster during or after use as they get very hot.

### Empty crumb tray regularly

To clean away any crumbs that accumulate after use.

### In order to achieve uniform browning

Wait a minimum of 30 seconds between each toasting, so that the control can automatically set.

### Bun warmer

Your bun warmer can also be used as a toast rack.

## Important safety instructions

The use of any electrical appliance requires the following common sense safety rules.

Primarily there is danger of injury or death and secondly the danger of damage

to the appliance. These are indicated in the text by the following two conventions:

**WARNING: Danger to the person!**  
IMPORTANT: Damage to the appliance!  
In addition we offer the following safety advice.

### Location

- Always locate your toaster away from the edge of the worktop.
- Ensure that the toaster is used on a firm, flat, heat resistant surface.
- Ensure that sufficient space is left above and around all sides of your toaster to allow air to circulate.
- IMPORTANT: Do not use too close to curtains, draperies, walls, cupboards and other flammable materials.
- WARNING: Do not use underneath cupboards.**
- Do not use outdoors.

### Mains lead

- The mains lead should reach from the socket to the toaster without straining the connections. Reduce the length of the excess lead by using the cord storage facility.
- Do not let the mains lead hang over the edge of the worktop where a child could reach it.
- Do not let the lead run across an open space e.g. between a low socket and table.
- Do not let the lead run across a cooker or hot area which might damage the cable.

### Personal safety

- Do watch your toaster during use.
- WARNING: Do not immerse cord,**

**plug or toaster in water or other liquid.**

- WARNING: Do not touch the top of the toaster or other hot parts during or after use, use handles or knobs.**
- WARNING: Do not insert oversize foods, metal, foil packages or utensils into the toaster.**
- WARNING: Do not attempt to dislodge food when the toaster is plugged in and never insert cooking utensils into the slots.**
- IMPORTANT: Do not place bread or other items on top of the slots as this may damage the toaster and creates a fire hazard.

### Children

- Never allow a child to operate this appliance.
- Children are vulnerable in the kitchen particularly when unsupervised and if appliances are being used or cooking is being carried out.
- Teach children to be aware of dangers in the kitchen, warn them of the dangers of reaching up to areas where they cannot see properly or should not be reaching.

### Other safety considerations

- Do not operate with a damaged cord or plug or after the appliance malfunctions or has been damaged in any manner.
- Do not attempt repairs - the appliance contains no user-serviceable parts. Call Morphy Richards for advice.
- Do not use accessories not recommended by the manufacturer.
- Do not place on or near a hot gas electric burner or in a heated oven.
- Only use for intended purpose.

- Unplug from outlet when not in use and when cleaning.
- Do not move the appliance whilst hot.

## Electrical requirements

Check that the voltage on the rating plate of your appliance corresponds with your house electricity supply which must be A.C. (Alternating current).

If the socket outlets in your home are not suitable for the plug supplied with this appliance the plug should be removed and the appropriate one fitted.

**WARNING : The plug removed from the mains lead, if severed, must be destroyed as a plug with a bared flexible cord is hazardous if engaged into a live socket outlet.**

**WARNING: This appliance must be earthed.**

## Features

- 1 Bread slots
- 2 Bread carriage lever with high lift feature
- 3 Electronic variable browning control
- 4 Bagel button
- 5 Cancel button
- 6 Re-heat button
- 7 Frozen button
- 8 LED strip
- 9 Cord storage (under the main body)
- 10 Removable crumb tray/base
- 11 Bun warmer/toast rack

## Before first use

Before using the toaster for the first time operate the toaster without bread with the room ventilated.

- The bread carriage lever 2 will not stay down unless the toaster is plugged in and the wall switch is on.
- As with all new electric heating elements, your toaster emits a 'new' smell when it is first switched on which is quite normal.

## Toasting

- Use your toaster without bread, this will burn off any dust which may have accumulated during storage.
- Select the desired level of browning (1 to 9) by rotating the browning control 3. This setting is indicated on the front of the toaster by the blue LED 8. 9.
- When the browning control is rotated away from the user the blue LED moves up the strip. At the very top it is on setting 9 and towards the bottom it is on setting 1.
- The unit defaults to setting 3 when first plugged in.
- Place your bread in the slots 1 and depress the bread carriage lever downwards until it locks.
- After the set time has elapsed the bread will pop up automatically ready for removal from the slots. The bread carriage lever will have returned to its upper position and the heating element will have switched off.

- If the bread in your toaster becomes jammed disconnect your toaster at the socket, allow it to cool, then remove the bread.
- When not in use, switch your toaster off at the mains and remove the plug from the socket.
- Allow the toaster to cool fully before putting away.

**WARNING: Do not wrap the cable around the main body of the appliance during or after use.**

### Bagel button

To toast bagels there is no need to adjust the browning control from your preferred setting. When you use the bagel function the toaster will automatically toast for an extended time period.

Cut the bagels in half. Place the bagel halves normally in the slots, then press the bagel button 4 and depress the bread carriage lever.

### Cancel button

If you wish to interrupt the toasting process, press the cancel button 5. You can also press any of the function buttons 4 5 6 7 to cancel toasting.

### Re-heat button

If your toast has popped up and gone cold, the toaster offers a re-heat facility. To use, press the re-heat button 6, then depress the bread carriage lever. A red light on the front panel will illuminate and the toaster will operate for a short period reheating the bread.

### Frozen button

To toast frozen bread you do not need to adjust the browning control from your normal preferred setting. With bread in the bread slots, press the frozen button 7 then depress the bread carriage lever. A red light on the front panel will illuminate.

### Bun warmer

Place the bun rack 11 on top of the toaster ensuring it is securely in place 4. Place the buns or other items onto the bun warmer. Set the browning control to setting 2. Depress the bread carriage lever until it holds down. Wait for the toaster to switch off automatically or press the cancel button to switch the toaster off before removing the buns.

**WARNING: Take care not to touch the metal of the bun warmer as it will be hot.**

- Do not put more than two buns on the bun warmer at any one time.

### Toast rack

The bun warmer can also be used as a toast rack 11.

## Hints & tips

- For best results ensure the bread slices are of even thickness, freshness and

- size.
- Stale bread toasts more rapidly than fresh bread. Therefore, the browning control should be set at a lower setting than usual.
- Thin bread toasts quicker than thick.
- In order to achieve uniform browning, we recommend you wait a minimum of 30 seconds between each toasting so that the control automatically resets.
- If toasting one slice only, you may need to adjust the browning control to a slightly lower setting.
- You may notice a slight variation in toast colour on one side of a single slice.
- All sorts of bread can be used as well as teacakes, small rolls etc. Slices should not however be so thick as to cause burning or jamming within the bread slots.
- When toasting two or more slices it is recommended they are of equal size and freshness.

## Cleaning and maintenance

- After use and before cleaning, switch off at the mains, remove the plug from the wall socket and wait for the toaster to cool.
- Wipe the outside of the toaster with a damp cloth only and dry with another cloth or tissue.
- NEVER use metal polish or coarse scouring agents and never immerse your toaster in any sort of liquid.
- NEVER use any pointed or sharp articles for cleaning the inside, otherwise the heating element will be damaged.
- NEVER use a brush or push your fingers or metal objects down the slots.

### Crumb tray

**WARNING: Crumbs will accumulate in the crumb tray and could catch fire if not emptied periodically.**

When the toaster has cooled down completely, tap the sides of the case lightly to dislodge any crumbs lodged in the toasting chamber and remove the crumb tray 10. Empty the tray and replace it 11. Never operate the toaster without the crumb tray fitted.

## Your two-year guarantee

It is important to retain the retailers receipt as proof of purchase. Staple your receipt to this back cover for future reference.

Please quote the following information if the product develops a fault. These numbers can be found on the base of the product.

Model no.

Serial no.

All Morphy Richards products are individually tested before leaving the factory. In the unlikely event of any appliance proving to be faulty within 28 days of purchase it should be returned to the place of purchase for it to be replaced.

If the fault develops after 28 days and within 24 months of original purchase, you should contact Morphy Richards quoting

GB

F

D

E

NL

P

I

DK

S

PL

RU

Model number and Serial number on the product, or write to Morphy Richards at the address shown.

You will be asked to return the product (in secure, adequate packaging) to the address below along with a copy of proof of purchase.

Subject to the exclusions set out below (1-6) the faulty appliance will then be repaired or replaced and dispatched usually within 7 working days of receipt.

If for any reason this item is replaced during the 2-year guarantee period, the guarantee on the new item will be calculated from original purchase date. Therefore it is vital to retain your original till receipt or invoice to indicate the date of initial purchase.

To qualify for the 2-year guarantee the appliance must have been used according to the manufacturers instructions. For example, appliances must have been descaled and filters must have been kept clean as instructed.

Morphy Richards shall not be liable to replace or repair the goods under the terms of the guarantee where:

- 1 The fault has been caused or is attributable to accidental use, misuse, negligent use or used contrary to the manufacturers recommendations or where the fault has been caused by power surges or damage caused in transit.
- 2 The appliance has been used on a voltage supply other than that stamped on the products.
- 3 Repairs have been attempted by persons other than our service staff (or authorised dealer).
- 4 Where the appliance has been used for hire purposes or non domestic use.
- 5 Morphy Richards are not liable to carry out any type of servicing work, under the guarantee.
- 6 The guarantee excludes consumables such as bags, filters and glass carafes.

This guarantee does not confer any rights other than those expressly set out above and does not cover any claims for consequential loss or damage. This guarantee is offered as an additional benefit and does not affect your statutory rights as a consumer.

GB

F

D

E

NL

P

I

DK

S

PL

RU

**GB**

Morphy Richards products are intended for household use only.

Morphy Richards has a policy of continuous improvement in product quality and design. The Company, therefore, reserves the right to change the specification of its models at any time.

The After Sales Division,  
Morphy Richards Ltd, Mexborough,  
South Yorkshire, England, S64 8AJ  
Helpline (office hours)  
**UK 0870 060 2612**  
Republic of Ireland 1800 409119

**F**

Les produits Morphy Richards sont conçus pour un usage exclusivement domestique. Morphy Richards s'engage à mener une politique d'amélioration continue en termes de qualité et de conception. Le fabricant se réserve donc le droit de modifier sans préavis la spécification de ses modèles.

Glen Dimplex France  
Z.I de l'Eglantier  
20, rue des Cerisiers  
91028 Evry cedex 2851  
Tel: + 33 (0)1 69 11 11 91  
Fax: + 33 (0)1 60 86 15 24

**D**

Morphy Richards Produkte sind nur für den Einsatz im Haushalt vorgesehen. Ständige Verbesserungen an der Produktqualität und dem Design gehören zur Philosophie von Morphy Richards. Aus diesem Grunde behält sich die Firma das Recht vor, die Angaben zu ihren Modellen jederzeit zu ändern.

Glen Dimplex Deutschland GmbH  
Zentralkundendienst  
Regbergstrasse 2  
D - 96365 Nordhalben  
Telefon: 09267 / 914 578

**E**

Los productos Morphy Richards están concebidos solamente para uso doméstico. Morphy Richards tiene una política de mejora en la calidad y diseño de sus artículos. La compañía, por lo tanto, se reserva el derecho de cambiar en cualquier momento las especificaciones de sus modelos.

Glen Dimplex España  
Servicio de Asistencia Técnica en toda España  
PRESAT S.A.  
Calle Ribes 49-53  
08013 Barcelona. España  
Línea de ayuda (horas de oficina)  
93 247 85 70  
presat@presat.net

**NL**

De producten van Morphy Richards zijn alleen bedoeld voor huishoudelijk gebruik. Morphy Richards streeft ernaar de kwaliteit en het design van zijn producten voortdurend te verbeteren. Het bedrijf behoudt zich daarom het recht voor om de specificaties van de producten op ieder ogenblik te wijzigen.

Glen Dimplex Benelux BV  
Antennestraat 84  
1322 AS Almere  
Nederland  
Telefoon +31-(0)-36 538 70 40  
Fax +31-(0)-36-538 70 41  
Service +31-(0)-36-538 70 55  
E-mail: info@glendimplex.nl  
www.morphyrichards.nl

**B**

Les produits Morphy Richards sont conçus pour un usage exclusivement domestique. Morphy Richards s'engage à mener une politique d'amélioration continue en termes de qualité et de conception. Le fabricant se réserve donc le droit de modifier sans préavis la spécification de ses modèles.

De producten van Morphy Richards zijn alleen bedoeld voor huishoudelijk gebruik. Morphy Richards streeft ernaar de kwaliteit en het design van zijn producten voortdurend te verbeteren. Het bedrijf behoudt zich daarom het recht voor om de specificaties van de producten op ieder ogenblik te wijzigen.

Glen Dimplex Benelux BV  
Gentsestraat 60  
B- 9300 Aalst  
België  
Telefoon +32-(0)-53 82 88 62  
Fax +32-(0)-53 82 88 63  
E-mail: info@glendimplex.be  
www.morphyrichards.be

**P**

Os produtos Morphy Richards foram concebidos apenas para utilização doméstica.

A Morphy Richards respeita uma política de aperfeiçoamento contínuo da qualidade e design do produto. Desta forma, a companhia reserva-se o direito de alterar as especificações destes modelos a qualquer momento.

Glen Dimplex Espanha i Portugal  
Servio da assistência Técnica em Portugal  
RENASE S.A.  
Rua Antero Quental, 236  
Edifício Europa 4455-586 Parafita  
PORTUGAL  
Linha ajuda (horas de escritório)  
(351) 229 942 917

**I**

I prodotti Morphy Richards sono concepiti esclusivamente per uso domestico. Morphy Richards è costantemente impegnata a migliorare la qualità e il design dei propri prodotti, pertanto si riserva il diritto di modificare le specifiche dei diversi modelli in qualunque momento.

**DK**

Morphy Richards produkter er kun beregnet til husholdningsbrug. Det er praksis hos Morphy Richards at fortsætte udviklingen af produktets kvalitet og design. Firmaet forbeholder sig derfor retten til at ændre modellernes specifikationer når som helst.

**S**

Produkter från Morphy Richards är endast avsedda för hushållsbruk. Morphy Richards har en policy för kontinuerlig förbättring i produktkvalitet och utformning. Företaget förbehåller sig därför rätten att när som helst ändra specifikationen för sina modeller.

**PL**

Produkty Morphy Richards są przeznaczone wyłącznie do użytku domowego.

Morphy Richards prowadzi politykę ciągłej poprawy jakości i wzoru produktów. Firma zastrzega sobie prawo zmiany specyfikacji modeli w dowolnej chwili.

Glen Dimplex Polska Sp. Z o.o  
Ul. Strzeszyńska 33  
60-479 Poznań  
NIP 781-16-70-985  
Tel: + 48 (0)61 8425 805  
Fax: + 48 (0)61 8425 806

**RU**

Изделия Morphy Richards предназначены только для бытового использования.

Morphy Richards постоянно совершенствует качество и дизайн своей продукции. Таким образом, компания оставляет за собой право в любое время вносить изменения в технические характеристики своих изделий.

**morphy richards®**