

KRUPS

ESPRESSERIA AUTOMATIC XP9000



Operating instructions

For household use only

Check warranty card for details of warranty in your country with a maximum of 5,000 cycles per year. This product is for domestic use only and is not suitable for trade or professional purposes. Any non-household use is not covered by the manufacturer's warranty. The warranty

does not cover breakdown or poor functioning of the machine resulting from failure to carry out descaling or machine damaged by foreign objects in grinding mill (e.g. wood, stones, plastic parts, etc.).

ENGLISH

FRANÇAIS

ESPAÑOL



USA 1 866 668 0325

CDN 1 800 418 3325

MEX 01 800 11 28 325



ACCESSORIES SOLD FOR YOUR KRUPS XP 9000 MACHINE



F 088

Aqua Filter System.
1 included with the machine



XS 4000

Cleaning fluid for steam nozzle. *Not included with the machine.*



XS 3000

Cleaning tablets.
2 tablets included with the machine



F 054

Descaling powder.
2 packs included with the machine

BEFORE USING FOR THE FIRST TIME

Please read these operating instructions and the safety instructions before using the machine for the first time. It is important to note that these instructions should be passed on to

anyone else using the machine and should be kept handy at all times. (A special holder for the operating instructions is provided at the rear of the machine).

IMPORTANT SAFEGUARDS

When using this espresso machine, basic safety precautions should always be followed to reduce the risk of fire, electric shock, and/or injury to persons including the following :

1. Read all instructions prior to first use.
2. Do not touch hot surfaces. Use handles or knobs.
3. To protect against fire, electric shock and injury to persons, do not immerse cord, plugs or machine in water or other liquid, keeps hands and utensils out of the bean container while grinding and when the machine is plugged in.
4. Do not put water into the coffee bean container and/or under the servicing flap.
5. Not intended for use by children.
6. Close supervision is necessary when any machine is used near children. Keep machine out of reach of children.
7. Burns can occur from touching hot plate, hot water or steam. Exercise caution.
8. Exercise caution when using the steam nozzle as steam can cause scalding.
9. Unplug machine from outlet as soon as you stop using it over a prolonged period and when you clean it. Allow to cool before putting on or taking off parts, before cleaning the machine, and before storing.
10. All machines are subject to stringent quality control. Practical tests using machines taken at random are conducted and this may explain any slight marks or coffee residue showing prior to use.
11. Do not operate any machine with a damaged cord or plug or after the machine malfunctions, or has been damaged in any manner. Return machine to the nearest Krups Service Center for examination, repair or adjustment.
12. To reduce the risk of injury do not drape cord over the counter top or table top where it can be pulled on by children or tripped over unintentionally.
13. Do not let cord hang over edge of table or counter, or touch hot surfaces.
14. The use of accessory attachments not recommended by Krups may result in fire, electric shock or injury to persons.
15. Do not use outdoors.
16. Do not place on or near a hot gas or electric burner, or in a heated oven.
17. To disconnect the machine, turn the control to "off" then remove plug from wall outlet. Do not yank cord, instead grasp plug and pull to disconnect.
18. Do not use the machine for other than intended use.
19. Do not pour liquids other than water and descaling solutions specified in this manual into the water tank.
20. Protect the machine against humidity and freezing.
21. This machine is for household use only.
22. This appliance is not intended for use by persons (including children) with reduced physical, sensory or mental capabilities, or lack of experience and knowledge, unless they have been given supervision or instruction concerning use of the appliance by a person responsible for their safety. Children should be supervised to ensure that they do not play with the appliance.

SAVE THESE INSTRUCTIONS - CAUTION

This machine is for household use only. Any servicing other than cleaning and user maintenance should be performed by the nearest authorized Krups Service Center.

Visit our website at www.krups.com or contact our Consumer Service department for the service center nearest to you.

To reduce the risk of fire or electric shock, do not dismantle the machine. Repair should be done by an authorized Krups Service Center only. Check voltage to be sure that the voltage indicated on the name plate agrees with your voltage.

SHORT CORD INSTRUCTIONS

- A. We do not recommend using an extension cord with this device.
- B. If an extension cord is absolutely necessary,
 - 1) the marked electrical rating of the extension cord should be at least as great as the electrical rating of the machine,
 - 2) the longer cord should be arranged so that it will not drape over the counter top or table top where it can be pulled on by children or tripped over.
- C. This machine has a grounded plug. To reduce the risk of electric shock, this plug is intended to fit into a grounded outlet only. If the plug does not fit into the outlet, contact a qualified electrician. Do not attempt to modify the plug in any way.

LIMITED WARRANTY

This Krups' product is warranted for 1 year with a maximum of 5,000 cycles (to check the nb of cycles, see page 16) from the date of purchase against defects in material and workmanship. During this period, Krups will, at its option, either repair or replace a defective product or any component found to be defective, at no cost. If a replacement product is sent, it will carry the remaining warranty of the original product. This warranty does not apply to any defect arising from misuse of the product, negligence, failure to follow Krups' instructions on use and maintenance, use on current of voltage other than that stamped on the product, or alterations or repairs not authorized by Krups. This warranty does not cover products that have been used for commercial purposes or normal wear and tear such as valves and seals that need to be replaced in the ordinary course, or if objects other than coffee beans are put through the grinder.

THE DURATION OF ANY IMPLIED WARRANTY WHATSOEVER, INCLUDING BUT NOT LIMITED TO THE WARRANTIES OF MERCHANTABILITY AND FITNESS FOR A PARTICULAR PURPOSE, SHALL BE LIMITED TO THE DURATION OF THE EXPRESS WARRANTY PROVIDED HEREIN.

KRUPS SHALL NOT BE LIABLE FOR ANY INCIDENTAL OR CONSEQUENTIAL DAMAGES WHATSOEVER.

Some states do not allow limitation on how long an implied warranty lasts or do not allow the exclusion of incidental or consequential damages, so the above limitations may not apply to you. This warranty gives you specific legal rights, and you may also have other rights, which vary from state to state.

If you believe your product is defective, take the product (or send it postage prepaid) along with proof of purchase to the nearest authorized Krups Service Center. (To find the nearest authorized Krups Service Center visit the Krups website or contact Consumer Service in your country indicated below)

Krups Service Center locations can be found by visiting the website www.krupsUSA.com in the USA or www.krups.ca in Canada.

When shipping the product to the service center please include a note explaining the issue, a copy of the sales receipt and provide a valid return address on the outside of the shipping box (no PO Boxes). If the product is out of warranty or warranty can't be validated, the service center will send an estimate of repair for your approval.

CONSUMER SERVICE

If you have additional questions, please call our Consumer Service Department. It is helpful to have the product available at the time of your call and to know the model number that can generally be found on the base of the product.

USA

Phone 1 866 668 0325

Hours*

Monday - Friday from 8:00 a.m. - 6:30 p.m. (EST)

Letters should be addressed to:

Krups

196 Boston Avenue
Medford, MA 02155

Only letters can be accepted at this address.

Packages without a return authorization number will be refused or forwarded to a Service Center.

**Please note hours are subject to change.*

CANADA

Phone 1 800 418 3325

Hours* Monday - Friday 8:30 a.m. - 4:30 p.m. (EST)

Letters should be addressed to:

Groupe SEB Canada Inc.

455 Finchdene Square
Scarborough, Ontario M1X 1B7

CONGRATULATIONS

on your purchase of this Krups Espresseria Automatic. In order ensure proper operation of the machine, please read the operating instructions carefully and keep them in a safe place.

A special holder is provided for this purpose at the rear of the machine. Should you require further information or if problems arise, please contact your respective countries Krups Exclusive Service hotline.

	Machine & parts	6		Overview of program-setting	17
	First use	7		Maintenance	18
	Technical specifications	9		troubleshooting	18
	Automatic Cappuccino	10			
	Automatic Caffè Latte	11			
	Coffee & Espresso	12			
	Hot water & Steam	13			
	Servicing functions	14			
	Rinsing				
	Cleaning				
	Descaling				
	Information				
	Messages				



USA 1 866 668 0325

CDN 1 800 418 3325

MEX 01 800 11 28 325



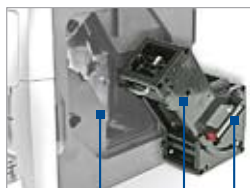
MACHINE & PARTS



Front door

Drip tray

Coffee grounds collector



Servicing door

Brewing unit

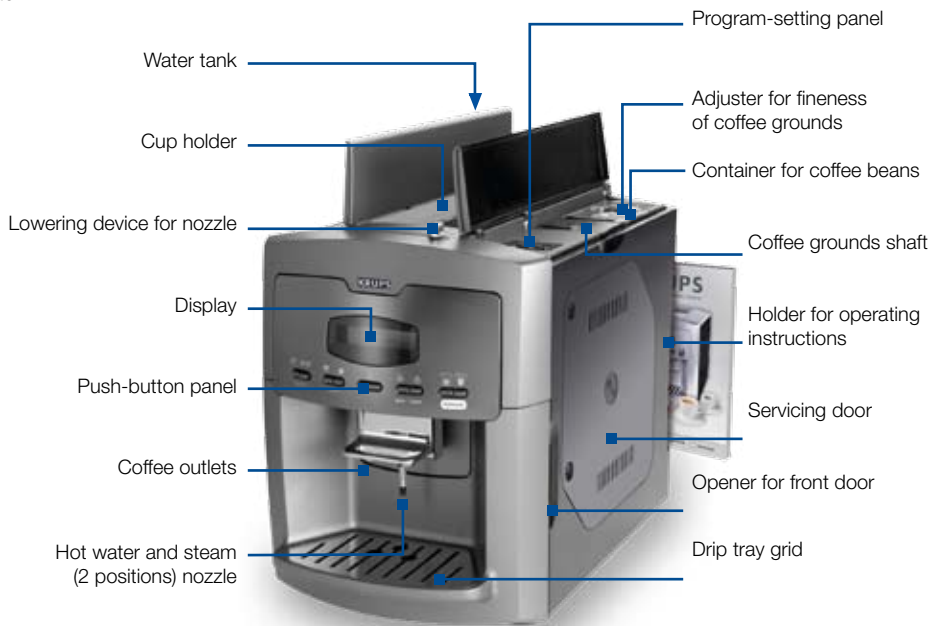
Release/locking handle

Nozzle retracted

Nozzle extended (Door blocked)



Lowering device for nozzle



Program-setting panel



Coffee grounds shaft

Container for coffee beans

GOING INTO PROGRAM MODE



Press button **P** or

NAVIGATING



Go back/cancel

Select/confirm

Scroll / select



MACHINE & PARTS



Espresso



Coffee



Water Steam



Automatic



1 Espresso



Coffee, mug



Steam



2 Espresso



ON / OFF



Automatic
Cappuccino



Coffee



Hot water



Automatic
Caffe Latte



Selected output can be stopped by pressing any key on the operating panel!



FIRST USE

1 Remove protective film from display and drip tray grid

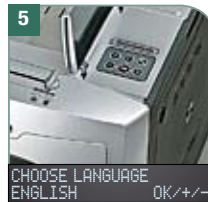
2 Plug machine into outlet



Turn main switch on



Switch on machine
by pressing button ①



Select language by pressing (+)/(-)
confirm by pressing (OK)



Select unit of measure
by pressing (+)/(-)
confirm by pressing (OK)



Select time system
by pressing (+)/(-)
confirm by pressing (OK)



Set time by pressing (+)/(-)
confirm by pressing (OK)



FIRST USE



Set automatic switch-on time by pressing \oplus/\ominus , confirm by pressing OK



after 15min - 8h

Set automatic switch-off time by pressing \oplus/\ominus , confirm by pressing OK



Determining water hardness



Immerse water-hardness strip in water for one second. Take a reading of water hardness after one minute.



Set water hardness by pressing \oplus/\ominus confirm by pressing OK



If **NO** → go to steps 19-22

If **YES** → go to steps 14-22

Select use of water filter by pressing \oplus/\ominus , confirm by pressing OK

At any time you can change the settings by pressing P (Program Mode) and then C to return



Place water filter in right side of water tank. Screw it slowly clockwise to insert it



Fill water tank with fresh water and refit onto machine



Place receptacle (min. capacity: 350 ml / 11.2 oz) under steam nozzle



FIRST USE



Press button  to start




Filter rinsing is in operation
(observe screen messages)



Fill water tank if necessary



Press button  to start



Water circuit is filled



Machine is now ready
for use

If the machine is switched off before initial set up is fully completed, the process must be re-started from the beginning. When the machine is used for the first time, or has not been used for some time, the first cups of coffee will not have the full aroma, and we will recommend not to drink it. Discard the first cup of coffee and brew again for great tasting coffee.



TECHNICAL SPECIFICATIONS

Voltage	120 V AC	Drip tray	max. 900 ml / 30 oz
Power rating	1450 W	Pump pressure	Static, max. 15 bar
Standby	2.3 W per Hour	Cable length	1.2 m / 47 inch.
Coffee readiness	21 W per Hour	Weight	11.3 kg / 25 pound
Coffee readiness with cold start	37 W per Hour	Out-of-carton dimensions (W x H x D)	29 x 40 x 48 cm 11 x 15 x 19 inch.
Water tank	2.6 l / 88 oz.		
Coffee-bean container	300 g / 11 oz.		
Container for coffee grounds	max. 20 portions		

AUTOMATIC CAPPUCCINO



A cappuccino is made up of the following proportions:
1/3 milk + 1/3 coffee + 1/3 frothed milk

Fill up coffee beans container (Max. 300 g / 11 oz.) or grounds shaft (min. 1 spoon, max 2 spoons) as necessary. You can select from the following recipes



Recipes	Milk / Steam time / Coffee
Large	60 ml - 2 oz / 15 s / 60 ml - 2 oz
Small	40 ml - 1 oz / 10 s / 40 ml - 1 oz

For individual program-setting, see page 13

Press button



You may change the recipe by choosing \oplus/\ominus



Pour in appropriate amount of cold milk



Place cup under outlet



Lower steam nozzle

Be sure that the steam tube is in its lower position (see page 13 – paragraph «Steam»)

Process now runs automatically

6 Machine warms up & grinds coffee

7 Milk is frothed

8 Coffee is served

9 While the cycle is in process, the quantity of coffee or length of time for steam preparation can be adjusted by pressing \oplus/\ominus

10 **Process is complete.** Lift nozzle, remove cup and ensure to clean the steam nozzle



Cleaning steam nozzle (automatically alert to clean after 4 min.)

CLEAN STEAM NOZZLE
PRESS OK

Confirm by pressing OK

For even better cleaning, we recommend our XS 4000 cleaning fluid (see Page 14)



Confirm by pressing OK . Place cup of warm water under the steam nozzle



Lower steam nozzle, process starts



Process is complete. Lift the nozzle

Caffe Latte, sometimes also known as Latte Macchiato, consists roughly of the following proportions:
3/5 milk + 1/5 coffee + 1/5 frothed milk



AUTOMATIC CAFFE LATTE

Fill up coffee beans container (Max. 300 g / 11 oz.) or grounds shaft (min. 1 spoon, max 2 spoons) as necessary. You can select from the following recipes




Recipes	Milk / Steam time / Coffee
Large	120 ml - 4 oz / 30 s / 40 ml - 1 oz
Small	90 ml - 3 oz / 25 s / 30 ml - 1 oz

For individual program-setting, see page 13

Press button 



You may change the recipe by choosing 




Pour in appropriate amount of cold milk



Place cup under spout



Lower steam nozzle

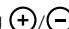
 Be sure that the steam tube is in its lower position (see page 13 – paragraph «Steam»)

Process now runs automatically

6 Machine warms up & grinds coffee

7 Milk is frothed

8 Coffee is served

9 While the process is in operation, the quantity of coffee or length of time for steam preparation can be adjusted by pressing 

10 **Process is complete.** Lift nozzle, remove cup and ensure to clean the steam nozzle



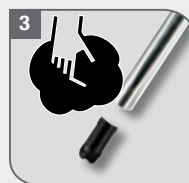
Cleaning and removing steam nozzle



Turn lower part of nozzle in the direction of the arrow above and remove



Clean nozzle under running water



Wipe nozzle dry with a soft cloth



Reassemble nozzle and refit

ESPRESSO

20 ml - 70 ml
0.5 oz - 2 oz



COFFEE

80 ml - 300 ml
2.5 oz - 10 oz



Whole bean coffee (Fill up bean container Max. 300 g/ 11 oz.)



Place cup under spout



Select coffee or espresso

	1 Espresso
	2 Espresso
	1 Coffee
	1 Coffee mug

Ground coffee

min. 1 spoon, max. 2 spoons

If you have opened the flap by mistake, you can cancel the beverage by pressing button C

1. Put ground coffee into shaft using the spoon and close flap



1 spoon	1 Espresso
1 1/2 spoon	1 Coffee
2 spoons	1 Coffee mug / 2 Espresso



Select coffee or espresso

Do not fill the grounds shaft with whole beans, instant coffee or other powdered drinks! If no drink comes out after 90 seconds, the brewing chamber empties automatically. The machine automatically goes into rinsing mode!



Setting the grinder fineness setting. Only adjust during grinding!

The finer the setting for coffee grinding, the stronger and creamier, flavored the coffee. The setting takes effect after 2 cups, allowing that coffee from the previous setting is still in the machine.

Light roast: finer setting. Dark roast: coarser setting

Do not put your fingers into the grinding mechanism! Do not use glazed, flavored or caramelised coffee beans, or beans that have been treated with additives containing sugar, otherwise this will clog the grinding mechanism.



Setting the quantity during brewing

After selecting the desired beverage (espresso, coffee, steam, hot water) the quantity or duration can be adjusted by pressing /



AUTOMATIC CAPPUCCINO

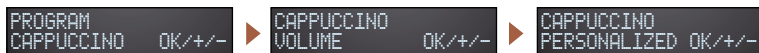


AUTOMATIC CAFFE LATTE

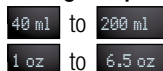
CUSTOMIZED PROGRAM SETTINGS

For customized cappuccino and caffe latte

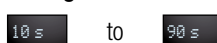
Press button **P** Select INDIV. in recipe menu by pressing **+**/**-** Confirm by pressing **OK**



Setting the quantity of coffee and milk



Setting the steam time




HOT WATER



1 Place receptacle under spout



Caution! Hot water and steam can cause scalding!

Start hot water delivery by pressing button . Machine stops after delivery of desired quantity. You can stop the flow at anytime by pressing any button.

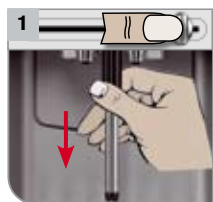
For permanent quantity settings, see P. 17 : Prog. 6



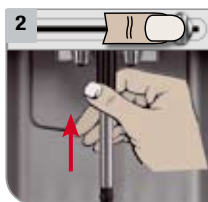
STEAM

Can be used for heating drinks (e.g. hot chocolate etc...)

Dual-position frother allows you to steam milk for cappuccino, latte and other espresso based beverages (see picture 1) or you can simply adjust to heat milk without any froth (see picture 2). While adjusting the external steam tube, maintain the lowering device.



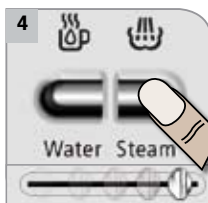
1 Steam tube in lower position for frothing and heating



2 Steam tube in upper position for heating without frothing



3 Place filled receptacle under spout



4 Press button , lower steam nozzle



5 Machine stops after desired time, Lift steam nozzle. Be sure to rinse the steam nozzle after each use

For permanent quantity settings, see P. 17 : prog 7

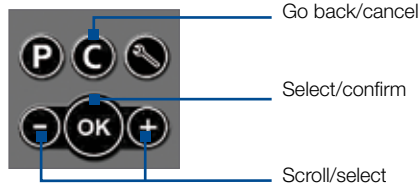


SERVICING FUNCTIONS

1 GOING INTO PROGRAM MODE



2 NAVIGATING



1 Rinsing



When machine is switched off it will automatically rinse.



Rinsing complete, machine is ready

2 Cleaning (approx. 10 min.)



XS 3000



2 Follow instructions in display until the following appears ...



Keep cleaning tablets out of the reach of children. Store with care.

3 Cleaning steam nozzle (with XS 4000) (approx. 3 min.)



XS 4000
max. 15 ml
/ 0.50 oz



Hot water
250 ml / 8.5 oz



Put liquid cleaner and warm water into receptacle and place under steam nozzle

2 Follow instructions in display until the following appears ...



Repeat procedure with fresh water for rinsing, as shown by the display!



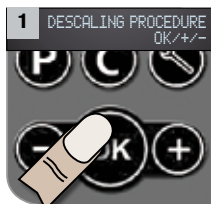
Keep cleaning fluid out of the reach of children. Store with care.



SERVICING FUNCTIONS

! Never descale with vinegar or vinegar-based agents! Always use a Krups descaling powder (F054). When descaling, cover your work surface below the machine because descaling agents, which contain acid, can attack these surfaces. This applies especially to work surfaces made of stone, wood and marble. Always descale without the water filter.

4 Descaling (approx. 30 min.)



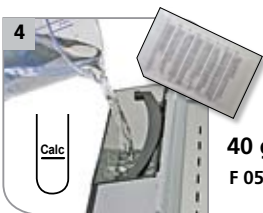
Confirm by pressing



Empty drip tray and container for used coffee grounds, and put back



Empty water tank and remove water filter



40 gr.
F 054

Add water and descaling powder as far as **Calc** mark in the water tank

5 Follow instructions in display until the following appears ...

DESCALING FINISHED
APPLIANCE READY

! Never interrupt the descaling program! Keep a number of receptacles handy. Keep descaling powder out of the reach of children. Store with care. If your product is equipped with our Claris - Aqua Filter System cartridge F088 - please remove this cartridge during the descaling operation.

5 Changing the water filter Automatic message appears when filter needs changing

CHANGE WATER FILTER
PRESS OK

Press **+**/**-** to select use of water filter, confirm by pressing **OK**



If **NO** → machine is ready

If **YES** → go to pages 8/9, steps 14-22

Select use of water filter by pressing **+**/**-**, confirm by pressing **OK**.

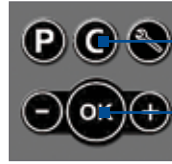
! The Claris Aqua Filter System is effective for two months. If machine does not display "Change filter" to begin with, then this must be done after every 2 months.



SERVICING FUNCTIONS

6 You can obtain the following information:

INFORMATION MACHINE
OK/+/-



2 x button C: cancel

OK button: confirm

INFORMATION MACHINE
COFFEES X

Number of portions of coffee served



INFORMATION MACHINE
LAST DESCALING X

Most recent descaling operation before X litres delivered



INFORMATION MACHINE
CLEANING X

Number of cleaning operations done



INFORMATION MACHINE
NEXT DESCALING X

Next descaling operation after x litres delivered



INFORMATION MACHINE
LAST CLEANING X

Most recent cleaning before X portions served



INFORMATION MACHINE
CHANGE FILTER X

Number of times water filter has been changed



INFORMATION MACHINE
NEXT CLEANING X

Next cleaning operation after X portions served



INFORMATION MACHINE
LAST FILTER X

Most recent change of water filter before X litres delivered



INFORMATION MACHINE
DESCALING X

Number of descaling operations done



INFORMATION MACHINE
NEXT FILTER X

Next change of water filter after X litres delivered



MESSAGES

i = Information messages

! = Must be done without fail!

i CLEANING NECESSARY
IN X COFFEES

Cleaning should be done before X coffee preparations have been made

i CHANGE WATER FILTER
IN X COFFEES

Filter should be changed before X coffee preparations have been made

! CLEANING NECESSARY
PRESS OK

Press OK and start cleaning program now

! CHANGE WATER FILTER
PRESS OK

Change filter and press OK

! BREWING UNIT
IS MISSING

Insert brewing unit and lock

i DESCALING NECESSARY
IN X COFFEES

Descaling should be done before X coffee preparations have been made

! SERVICE 1
CONTACT HOTLINE

Call Hotline

! DESCALING NECESSARY
PRESS OK

Press OK and start descaling program now

! SERVICE 2
CONTACT HOTLINE

Call Hotline

GENERAL OVERVIEW OF PROGRAM-SETTING

There are 13 programs at your disposal / Select by pressing (+)/(-), confirm by pressing (OK)

									Factory settings
1	PROGRAM COFFEE VOLUME	OK/+/- (OK)	ESPRESSO VOLUME	OK/+/-	20 ml	to	70 ml	(OK)	50 ml
					0,5 oz	to	2 oz		1,5 oz
			COFFEE VOLUME	OK/+/-	80 ml	to	300 ml	(OK)	100 ml
				2,5 oz		10 oz		3 oz	
	LONG COFFEE VOLUME	OK/+/-	80 ml	to	300 ml	(OK)	200 ml		
				2,5 oz	to	10 oz		6,5 oz	
2	COFFEE STRENGTH	OK/+/- (OK)	MILD / NORMAL / STRONG	(OK)	NORMAL				
3	COFFEE TEMPERATURE	OK/+/- (OK)	LEVEL 1 / LEVEL 2 / LEVEL 3	(OK)	LEVEL 2				
4	PROGRAM CAPPUCCINO	OK/+/- (OK)	CAPPUCCINO VOLUME	OK/+/-	SMALL / BIG / PERSONAL*	(OK)	SMALL		
			CAPPUCCINO STRENGTH	OK/+/-	MILD / NORMAL / STRONG	(OK)	NORMAL		
5	PROGRAM CAFFE LATTE	OK/+/- (OK)	CAFFE LATTE VOLUME	OK/+/-	SMALL / BIG / PERSONAL*	(OK)	BIG		
			CAFFE LATTE STRENGTH	OK/+/-	MILD / NORMAL / STRONG	(OK)	NORMAL		
6	HOT WATER VOLUME	OK/+/- (OK)	30 ml	to	300 ml	(OK)	200 ml		
			1 oz	to	10 oz	(OK)	6,5 oz		
7	STEAM TIME	OK/+/- (OK)	10 s	to	90 s	(OK)	30 s		
8	WATER HARDNESS	OK/+/- (OK)	LEVEL 1 / LEVEL 2 / LEVEL 3 / LEVEL 4 / LEVEL 5	(OK)	LEVEL 2				
9	AUTOMATIC STOP	OK/+/- (OK)	Hours: 02:--	Minutes: 02:30	(OK)				
10	AUTOMATIC START	(OK)	Hours: 12:--	Minutes: 12:05					
11	TIME SETTING	OK/+/- (OK)	Hours: 12:--	Minutes: 12:05	(OK)				
12	CHOOSE LANGUAGE	OK/+/- (OK)	DEUTSCH / ENGLISH / NEDERLANDS / FRANCAIS / ITALIANO	(OK)	DEUTSCH				
13	PROGRAM	OK/+/- (OK)	TIME DISPLAY	OK/+/-	VOLUME UNIT	OK/+/-	TIME FORMAT	OK/+/-	
					24H				

ENGLISH

FRANÇAIS

ESPAÑOL



PERIODIC MAINTENANCE



1
Open servicing door
(release with coin)



2
Release brewing unit:
press red button, turn
handle upwards



3
Remove brewing unit
gently



4
Clean the brewing group
under running water and
leave to dry



5
Check that the markings
line up together. If they
are not lined up, press
red button and align.



6
Replace brewing unit
(Push unit so that white
line is visible)



7
Secure brewing unit,
locking mechanism
must be easy to move



8
Close service door

CHANGING THE FILTER The Claris Aqua Filter System is effective for two months. If machine does not display “change filter” to begin with, then this must be done after 2 months.

TRANSPORTING MACHINE Use only original packaging or suitable alternative packaging. Krups is not liable for damage in transit resulting from improper packaging.

GENERAL Wipe machine with a soft damp cloth. Do not wash accessories in a dishwasher. Descale and clean as shown by the machine. Important: failure to clean or descale will result in no claim being accepted under guarantee. **The system should be emptied if it has not been used for any length of time or is to be transported.** Switch off the machine and keep the hot-water button pressed for three seconds.

! TROUBLESHOOTING

PROBLEM	WHAT TO DO
Coffee is not hot enough	Preheat cups with hot water or place them on cup holder
Coffee only drips out or almost not all	- Set grinding to coarser grade or if using ready-ground coffee use coarser granules - Clean brewing unit as described (see above) - Clean machine as described on page 14-15
Coffee has no crema	Coffee not fresh or unsuitable brand of coffee. Change coffee or brand.
Too little froth, or froth too runny	Use very fresh, very cold milk (ideally 6-8°C / 42-46°F and minimum 1.5% fat)
No steam/hot water from nozzle	Nozzle is blocked - unscrew, clean and prick the opening in the central outlet with a pin and fit back into place (see Page 11)
Grinder is noisy	During further preparations check whether noise persists; if so, use only ground coffee. Contact Krups customer service
“check drip tray” is continually displayed	- Insert drip tray correctly - Clean metal contacts in rear area
Doors cannot be opened	Lift nozzle so that the door latch is released