



THE COMPUTER'S PERSONAL AGAIN.

Location, availability, and number of connectors may vary.
De locatie, beschikbaarheid en het aantal connectors kunnen variëren.
A localização, disponibilidade e número de fichas poderão variar.

QUICK SETUP
SNELE INSTALLATIE
CONFIGURAÇÃO RÁPIDA

Keyboard and Mouse

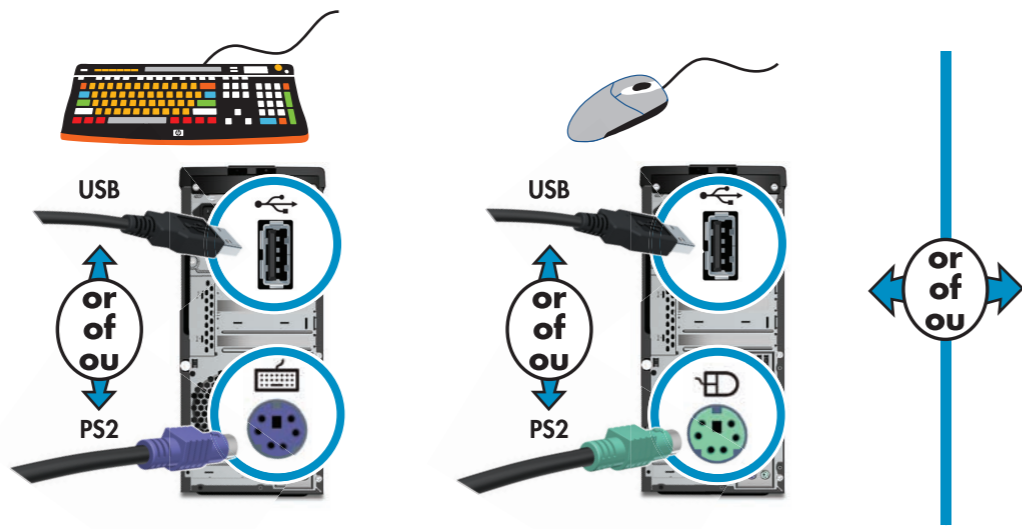
Wired option. Match the colors.

Toetsenbord en muis

Bekabelde optie. De kleuren afstemmen.

Teclado e rato

Opção com fio. Corresponder as cores.



Wireless option. Refer to the setup instructions located in your keyboard box.

NOTE: The same receiver controls both the keyboard and mouse.

Draadloze optie. Raadpleeg de installatie-instructies die bij uw toetsenbord werden geleverd.

OPMERKING: Het toetsenbord en de muis worden door dezelfde ontvanger aangestuurd.

Opção sem fios. Consulte as instruções de configuração localizadas na caixa do teclado.

NOTA: O mesmo receptor controla o teclado e o rato.



Monitor

Refer to the setup instructions that came with your monitor.
Monitors may be sold separately.

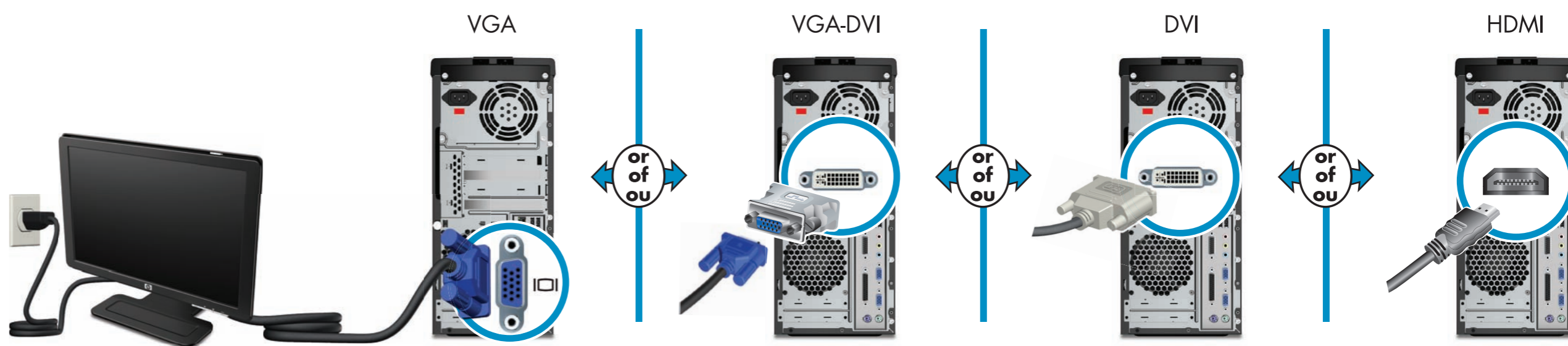
Monitor

Raadpleeg de installatie-instructies van uw monitor.
Monitoren worden mogelijk afzonderlijk verkocht.

Monitor

Consulte as instruções de configuração fornecidas com o monitor.

Os monitores podem ser vendidos em separado.



Speakers

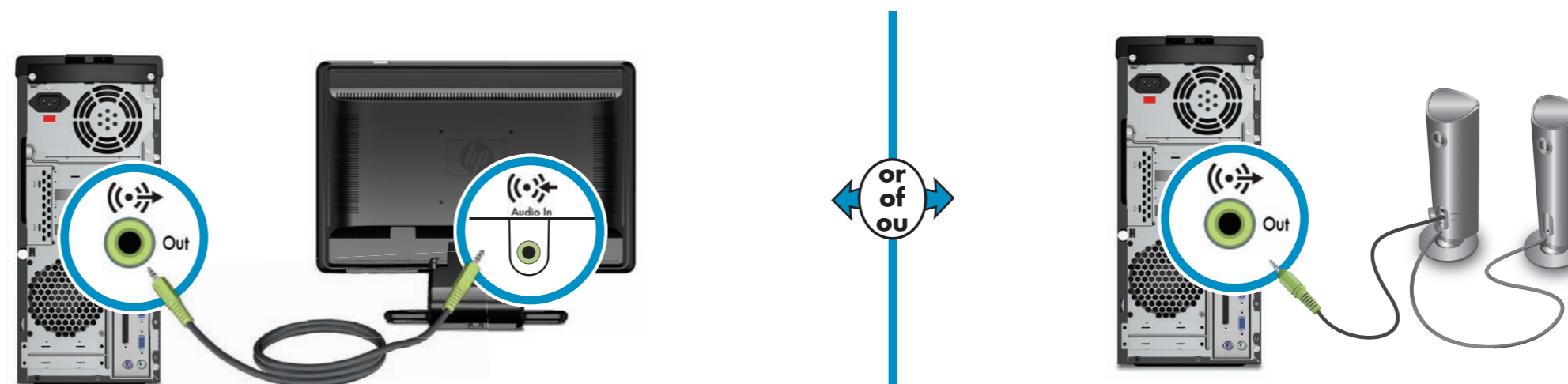
Refer to the setup instructions that came with your speakers.
Speakers may be sold separately.

Luidsprekers

Raadpleeg de installatie-instructies die geleverd werden bij uw luidsprekers.
Luidsprekers worden mogelijk afzonderlijk verkocht.

Colunas

Consulte as instruções de configuração fornecidas com os altifalantes.
Os altifalantes podem ser vendidos em separado.



Connect Power

Computer to electrical outlet. Grounded connection or connection to surge protector is recommended.

Stroom aansluiten

Computer naar stopcontact. Geaarde aansluiting of aansluiting op stroomstootbeveiliging is aanbevolen.

Ligar alimentação

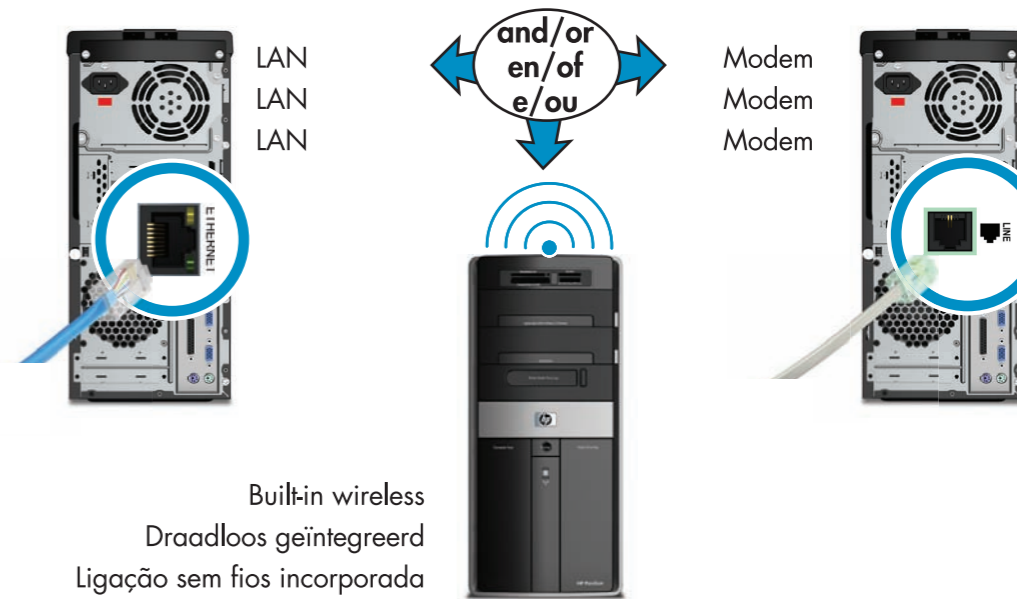
Computador para tomada eléctrica. É recomendada uma ligação à terra ou ligação a um protector contra picos de corrente.



LAN / Modem

LAN / Modem

LAN / Modem



Built-in wireless
Draadloos geïntegreerd
Ligação sem fios incorporada

Power On

Inschakelen

Alimentação ligada



STARTUP MAY TAKE:

20 MINUTES

Do not turn off the computer during this process.



DUUR OPSTARTEN CIRCA:

20 MINUTEN

Schakel uw computer niet uit tijdens dit proces.



O ARRANQUE PODE DEMORAR:

20 MINUTOS

Não desligue o computador durante este processo.

FINDING INFORMATION ABOUT YOUR COMPUTER

Hewlett-Packard is committed to reducing the environmental impact of our products. Double-click on the **Help and Support** icon on your desktop to find additional information about your computer and online manuals.

Or

Go to www.hp.com/support

INFORMATIE ZOEKEN OVER UW COMPUTER

Hewlett-Packard engageert zich om de milieuvuiling van zijn producten te verminderen. Dubbelklik op het pictogram **Help en ondersteuning** op uw bureaublad om meer informatie te vinden over uw computer en online handleidingen.

Of

Ga naar www.hp.com/support

COMO ENCONTRAR INFORMAÇÃO SOBRE O SEU COMPUTADOR

A Hewlett-Packard está empenhada em reduzir o impacto ambiental dos nossos produtos. Faça duplo clique no ícone **Ajuda e Suporte** no seu ambiente de trabalho para encontrar informação adicional sobre o seu computador e manuais em linha.

Ou

Vá ao site: www.hp.com/support