

PC Connecting Kit

Operating Instructions

For the latest information on this product

For Windows: Refer to the "readme.txt" file on the supplied CD-ROM.

For Macintosh: Refer to the "ReadMe" file on the supplied CD-ROM.

Notice for users

Program ©1997 Sony Corporation/
Documentation ©1997 Sony
Corporation

All rights reserved. This manual or the software described herein, in whole or in part, may not be reproduced, translated or reduced to any machine readable form without prior written approval from Sony Corporation.

IN NO EVENT SHALL SONY CORPORATION BE LIABLE FOR ANY INCIDENTAL, CONSEQUENTIAL OR SPECIAL DAMAGES, WHETHER BASED ON TORT, CONTRACT, OR OTHERWISE, ARISING OUT OF OR IN CONNECTION WITH THIS MANUAL, THE SOFTWARE OR OTHER INFORMATION CONTAINED HEREIN OR THE USE THEREOF.

By breaking the seal of the envelope of the CD-ROM package, you accept all the terms and conditions of this agreement. If you do not accept these terms and conditions, please return this disk envelope unopened, along with the rest of the package, immediately to the dealer where you obtained it.

Sony Corporation reserves the right to make any modification to this manual or the information contained herein at any time without notice.

The software described herein may also be governed by the terms of a separate user license agreement.

User registration

To receive the customer services, complete and return the registration card included in your package.

For the latest information

For the latest information on this product, refer to the following:

For Windows:

“readme.txt” file on the supplied CD-ROM, using the Windows “Notepad” program. (You can open the file by clicking [Start], [Programs], [Sony] and then [Supplement].)

For Macintosh:

“ReadMe” file on the supplied CD-ROM using the Simple Text.

Trademarks

- IBM and PC/AT are registered trademarks of International Business Machines Corporation.
- Microsoft and Windows are trademarks of Microsoft Corporation, registered in the U.S.A. and other countries.
- Apple, Macintosh and Power PC are trademarks of Apple Computer Inc., registered in the U.S.A. and other countries.
- QuickTime is a trademark of Apple Computer Inc.
- Adobe and Photoshop are trademarks of Adobe Systems Incorporated.

All other trademarks and registered trademarks are trademarks or registered trademarks of their respective holders.

About this manual

This instruction manual is divided into two sections:

For Windows (from page 7)

The former section explains how to use the PC Connecting Kit for Windows:

Before you begin (page 8)

Explains features of the PC connecting kit. Also explains the system requirements for using this product.

Setting up (page 13)

Explains how to install the software, set the Digital Still Camera and connect the Camera to your PC.

Sony Digital Still Camera Album Utility Capturing an image (page 23)

Explains how to save the camera images onto hard disk in album or another file format and then display the images on the hard disk. Also explains how to acquire an image from the devices which support TWAIN protocol into your PC.

Editing an image (page 54)

Explains how to change album thumbnail and comments, copy and delete an image, print and transfer an image and other editing features.

Sony DSC-F1 TWAIN 1.5

Using the TWAIN data source (page 69)

Explains how to transfer a camera image to an application which supports TWAIN protocol.

Others (page 71)

Gives additional information.

For Macintosh (from page 77)

The later section explains how to use the PC Connecting Kit for Macintosh:

Before you begin (page 78)

Explains features of the PC connecting kit. Also explains the system requirements for using this product.

Setting up (page 82)

Explains how to connect the software to your Macintosh. Also explains how to set the Digital Still Camera and connect the Camera to your Macintosh.

Sony Digital Still Camera Album Utility Capturing an image (page 86)

Explains how to save the camera images onto hard disk in album or another file format and then display the images on the hard disk.

Editing an image (page 113)

Explains how to sort the images, change a comment, zoom and rotate an image, review the image information, print and transfer an image and other editing features.

Sony Digital Still Camera Plug-in Using the Plug-in (page 123)

Explains how to transfer a camera image into the application which supports Adobe Photoshop Plug-in.

Others (page 125)

Gives additional information

Note

Explanations in this manual assume that you are familiar with basic Windows and Macintosh operations. For how to use your computer and operating systems, please refer to the respective manuals.

Table of contents

About this manual	3
Getting started	6

For Windows (from page 7)

Before you begin

Features	8
System requirements	12

Setting up

Determining how to connect the Digital Still Camera	13
Connecting via cable	14
Connecting via infrared port	18

Sony Digital Still Camera Album Utility

Capturing an image

Starting "Sony Digital Still Camera Album Utility"	23
About the menus	24
Using the tool bar	29
Changing system settings	30
Opening the camera images	31
Opening the image from the image list window	31
Opening the image directly	34
Saving the camera images in album ..	35
Opening and saving the camera images	35
Saving all the camera images without opening them	37
Saving the selected camera images without opening them	38
Saving the camera images as another file format	40
Opening and saving the camera images	40
Saving all the camera images without opening them	43

Saving the selected camera images without opening them	45
Opening an album of the hard disk ..	47
Opening an image file directly	50
Capturing an image from TWAIN device	53

Editing an image

Changing the album front cover	54
Changing the caption	55
Moving albums or images (drag and drop)	56
Copying an image to another album ..	57
Copying with the File menu	59
Deleting images or albums	60
Searching for images	61
Printing images	62
Changing the image display size	64
Rotating an image	65
Reviewing the image information	66
Transferring an image to the camera	67

Sony DSC-F1 TWAIN 1.5

Using the TWAIN data source

Transferring camera images to an application which supports the TWAIN protocol	69
--	----

Others

Troubleshooting	71
Index	74

For Macintosh (from page 77)

Before you begin

Features	78
System requirements	81

Setting up

Step 1: Installing the software	82
Step 2: Connecting the Digital Still Camera	84
Step 3: Setting up the Digital Still Camera	85

Sony Digital Still Camera Album Utility

Capturing an image

Starting "Sony Digital Still Camera Album Utility"	86
About the menus	87
Using the tool bar	91
Setting the Preferences	92
Opening the camera images	94
Opening the image from the image list window	94
Opening the image directly	97
Saving the camera images in album .	98
Opening and saving the camera images	98
Saving all the camera images without opening them	100
Saving the selected camera images without opening them	101

Saving the camera images as another file type	103
Opening and saving the camera images	103
Saving all the camera images without opening them	105
Saving the selected camera images without opening them	106
Opening an album of the hard disk	109
Opening an image file directly	111

Editing an image

Changing the comment	113
Sorting the images	114
Copying an image to another album	115
Deleting images	116
Printing images	117
Changing the image display size ...	119
Rotating an image	120
Reviewing the image information ..	121
Transferring an image to the camera	122

Sony Digital Still Camera Plug-in

Using the Plug-in

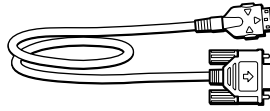
Transferring camera images to your application	123
---	-----

Others

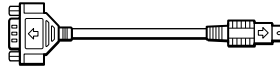
Troubleshooting	125
Index	127

Getting started

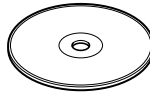
The items used in this product are supplied in the Digital Still Camera DSC-F1 package together with the other supplied accessories. Unpack the package and pick up the following items:



Connecting cable (1)



Cable adapter for Macintosh (1)



**Hybrid CD-ROM for IBM PC/AT compatible
PC and Macintosh (1)**

**Operating instructions for PC Connecting Kit
(1)**

Registration card (1)

For Windows

Operating Instructions

Features

***Language install option

You can select the menu and dialog language for each software you install. The directory described as "****" in each installer stands for a language install option-English, French or German. For the file name of the installer, refer to the files contained in each language folder: The file named "Setup.exe" or "Install.exe" is the installer.

The PC Connecting Kit for Windows comprises the connecting cable and the CD-ROM, which includes the following:

■ Installer (DSCAlbum***\Setup.exe)

Installs the following:

Application software "Sony Digital Still Camera Album Utility Version 1.5"

Captures images from the Sony Digital Still Camera DSC-F1 and edits them:

- Captures Digital Still Camera images with or without opening them and copies them onto the hard disk in the desired file format.
- Offers a variety of album and image editing functions: moves the position of an image in an album, copies images to another album, deletes images, searches for images, zooms and rotates images, prints an image, and transfers an image from a hard disk. You can also capture an image from a TWAIN device such as a digital image scanner.

TWAIN data source driver "Sony DSC-F1 TWAIN 1.5"

Enables direct capturing of images from the Digital Still Camera into an application which supports the TWAIN protocol.

■ Installer (Infrared***\Setup.exe)

Installs the following:

Microsoft Windows 95 Infrared Communications Driver Version 2.0

Enables infrared data communication between the Digital Still Camera DSC-F1 and your PC, which is equipped with the infrared communication hardware or adapter. Please install this driver if it is not installed on the Windows 95 operating system of your PC. For information using the driver software, see the release notes or Help online document.

Image filing system of the Album Utility

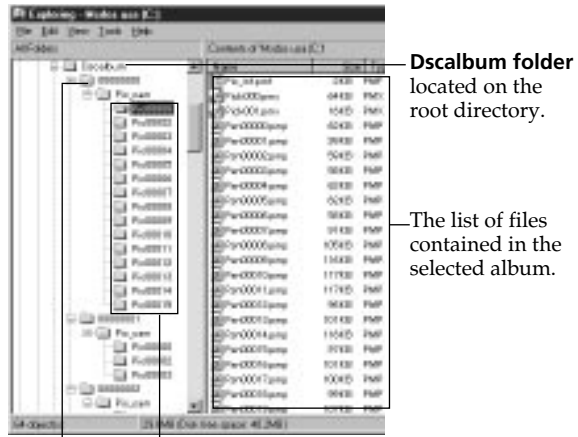
The “Sony Digital Still Camera album Utility” handles the images in a unique album filing system—“Album” format. You can also handle the images as standard file formats such as BMP, TIFF or JPEG.

Album format

When the Digital Still Camera images are copied onto the hard disk or other storage device, they are stored in the original filing system shown below, which is called the “Album” format. The “Album” format enables saving an image in a small file size without degrading its picture quality. Since the “Album” format is the original filing system, you cannot open an Album format file with other applications.

Notes

- Do not delete nor change the names of folders or files under the PIC_CAM directory. Doing so will prevent the control file inside the directory from activating and the “Sony Digital Still Camera Album Utility” from displaying the image.
- In case the Dscalbum folder is renamed or moved to another directory, it cannot be located with [Open Folder] in the File menu of the “Sony Digital Still Camera Album Utility.” You can locate the folder with [Find Folder] in the Option menu.



Album folder

The folder named with an 8-digit number containing the maximum of 30 PIC**** folders. It is the only folder whose name users can register.

Dscalbum folder
located on the root directory.

The list of files contained in the selected album.

Albums
Each folder can contain up to 200 image files (.pmp).

Features

Thumbnail

Stands for each image in the album list or image list.

The Album is displayed as follows:

Album list

Album icons contained in the album folder (*****) are listed with the thumbnail. Each album in the list stands for the PIC**** folder.

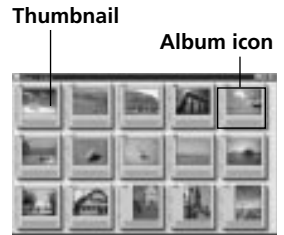


Image list

The thumbnails of images contained in the selected album (PIC****) are listed. Each image in the list stands for a PMP file. You can select and open any image.



Image

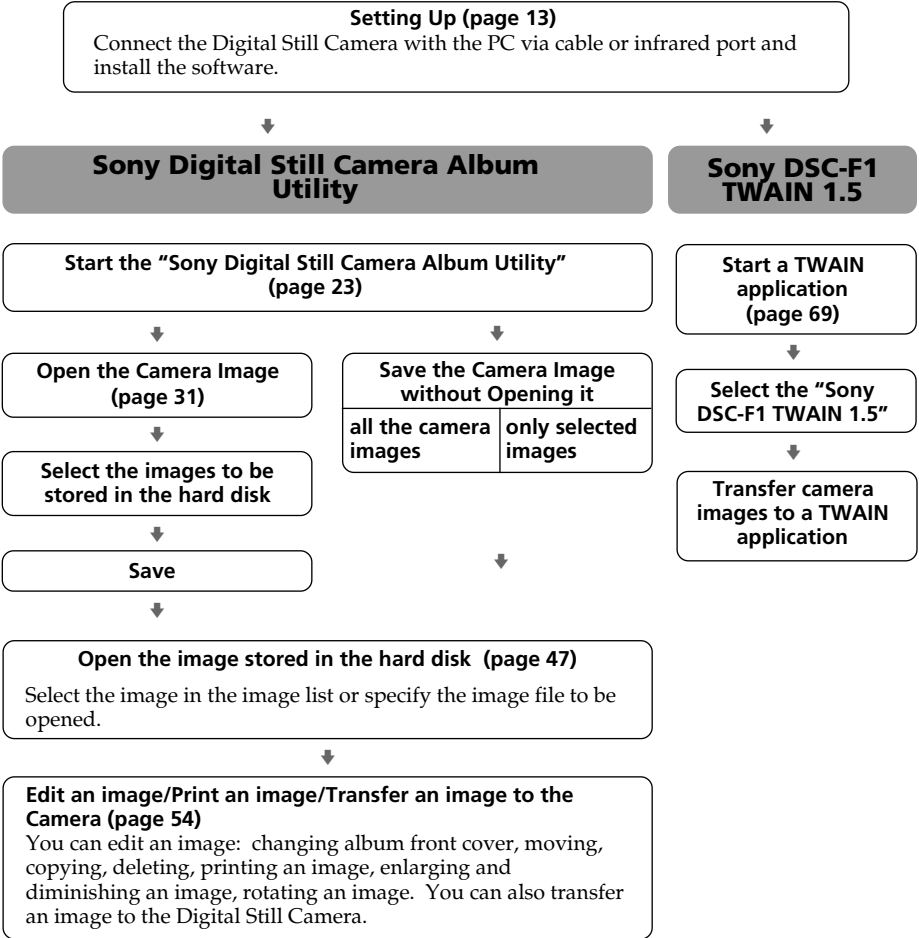
The selected image is displayed in full size.



Other file formats

You can also save or display the images in standards file formats: BMP (bitmap), TIFF, and JPEG formats.

Operation flow chart



System requirements

Your PC and system software must meet the following minimum requirements to use this product:

- IBM PC/AT or compatible
 - CPU: 80386SX 66MHz and above
 - RAM: 16MB or more
- OS: Microsoft Windows 3.1 or Windows 95
- Hard disk space: 40MB or more depending on the size and number of images you store.
- A color monitor with a video board or video driver to display 640 × 480 pixels and 256 colors or better. (A video board with 16,770,000 colors is recommended.)
- CD-ROM drive
- RS-232C port (serial speed selectable among 9600bps/19200bps/38400bps) or infrared port

Note

Depending on the PC, the selectable serial speeds (bps) are limited.

Determining how to connect the Digital Still Camera

Operation flow in connecting via cable

- 1 Installing the "Sony Digital Still Camera Album Utility" and "Sony DSC-F1 TWAIN 1.5."
- 2 Connecting the Digital Still Camera.
- 3 Setting up the Digital Still Camera—setting the menu and making the camera ready for communication.

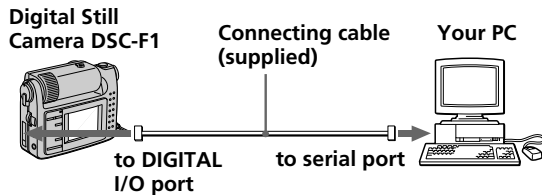
Operation flow in connecting via infrared port

- 1 Installing the "Sony Digital Still Camera Album Utility" and "Sony DSC-F1 TWAIN 1.5."
- 2 Installing Microsoft Windows 95 Infrared Communications Driver
- 3 Connecting the Digital Still Camera.
- 4 Setting up the Digital Still Camera—setting the menu and making the camera ready for communication.

Before using this software to capture the Digital Still Camera Images onto your PC, the Camera and your PC should be properly connected and the necessary software modules should be correctly installed in your PC. As illustrated below, there are two options for connecting the Digital Still Camera with your PC. Determine which option you use and follow the necessary steps:

Connecting via cable

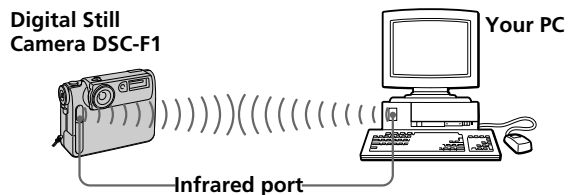
Use the connecting cable supplied to connect the Digital I/O port of the Digital Still Camera with the serial port of your PC:



Follow the steps explained in "Connecting via cable" (page 14).

Connecting via infrared port

Use the infrared ports to transfer the images between the Digital Still Camera and the PC:



Follow the steps explained in "Connecting via infrared port" (page 18).

Connecting via cable

Important notice to the users who have installed the previous version (Version 1.0) of "Sony Digital Still Camera Album Utility"

Before installing the Version 1.5 of the software, make sure to uninstall the Version 1.0 of the software with the CD-ROM supplied with the Version 1.0.

*****Language install option**

You can select the menu and dialog language among English, French or German. Type one of these language options in the directory described as "****" in step 4.

1 Installing "Sony Digital Still Camera Album Utility" and "Sony DSC-F1 TWAIN 1.5"

To handle Digital Still Camera images on your PC, use the installer to install "Sony Digital Still Camera Album Utility" and "Sony DSC-F1 TWAIN 1.5."

- 1** Turn on your PC and start up Windows 95.
- 2** Insert the supplied CD-ROM into the CD-ROM drive on your PC .
- 3** For Windows 95, click the [Start] button and then click [Run].
For Windows 3.1, open the Program Manager or File Manager and choose [Run] in the [File] menu.
The [Run] dialog box appears.
- 4** In the command line entry box, type the drive letter for your CD-ROM drive followed by a colon (:), a backslash (\), and then type the characters "DSCAlbum***\Setup.exe."
For example, if your CD-ROM is on drive D and your language install option (***) is "English" type:
d:\DSCAlbum\English\Setup.exe

The destination drive and directory

The drive and directory are by default set to "C:\SONYDSC\". Usually, use the default ones. If you want to install the software to another drive or directory, type the drive or directory name in the text box.

- 5** Click [Install].
The confirmation window for installation appears.
- 6** Click [Yes].
Installation starts up. When all the files and programs are copied, the dialog box appears.

Note

In case you want to move the software to another drive or directory after it is installed, make sure to uninstall the software and then install it again. Do not use the Explorer or File Manager to move the software files.

7 Click [OK].

The installation is completed.

Uninstalling the software

When the software becomes unnecessary, remove all the software files from your hard disk as follows:

1 Follow the steps 1 to 4 on page 14 to display the [Sony DSC Setup] dialog box.

2 Click [Uninstall].

The confirmation window for uninstallation appears.

3 Click [Yes].

The component files are deleted from your hard disk.

4 Click [Exit].

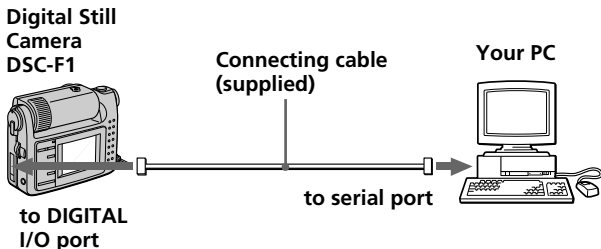
continued

Connecting via cable

Notes

- Turn off the power on your PC and Digital Still Camera before connection.
- Do not turn off the power of the camera nor disconnect the cable during the data, which may cause a transmission failure.
- Use only the supplied connecting cable. Other brands of cables may cause malfunctions.
- The supplied connecting cable is for the Sony Digital Still Camera DSC-F1 only. It cannot be used to connect other cameras.
- Insert the connecting cable carefully into the port, making sure that the port goes in straight and is firmly seated. When inserting the cable into the Digital I/O port of the Digital Still Camera, match the Δ mark of the cable with that of the port.
- Keep metal objects away from the connector pins to avoid short circuits.
- We suggest you use the Digital Still Camera with the AC power adapter.

2 Connecting the Digital Still Camera



Use the supplied connecting cable to connect the serial port on your PC and the DIGITAL I/O port on the Digital Still Camera DSC-F1.

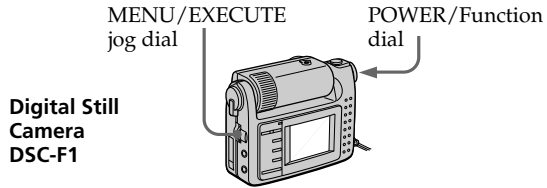
To resume data transmission

In case the data transmission is interrupted (and the Digital Still Camera becomes disabled), resume the transmission as follows :

- 1** Close all the windows of "Sony Digital Still Camera Album Utility" being displayed on the PC monitor.
- 2** Turn the POWER/Function dial of the Digital Still Camera to "OFF."
- 3** Turn the POWER/Function dial to "PLAY."
- 4** Transmit the data again.

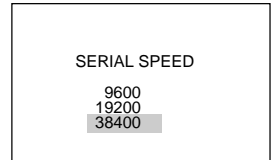
3 Setting up the Digital Still Camera

Before you start data communications between the PC and the Digital Still Camera, set up the Digital Still Camera as follows. For the details, refer to the instruction manuals of the Digital Still Camera DSC-F1.



- 1 Set the POWER/Function dial to "PLAY."
- 2 To activate the data transmission via the connecting cable, set the menu as follows:

Menu	Select
WIRELESS	OFF
SERIAL*	The same serial speed as selected in the [Settings] dialog box of the "Sony Digital Still Camera Album Utility."



The Digital Still Camera is ready for communication via cable.

* The SERIAL menu defines the serial speed via the connecting cable.

Note

During the data communication in process, do not change the position of the POWER/Function dial.

Connecting via infrared port

Important notice to the users who have installed the previous version (Version 1.0) of "Sony Digital Still Camera Album Utility"

Before installing the Version 1.5 of the software, make sure to uninstall the Version 1.0 of the software with the CD-ROM supplied with the Version 1.0.

***Language install option

You can select the menu and dialog language among English, French or German. Type one of these language options in the directory described as "****" in step 4.

Note

In case you want to move the software to another drive or directory after it is installed, make sure to uninstall the software and then install it again. Do not use the Explorer or File Manager to move the software files.

1 Installing "Sony Digital Still Camera Album Utility" and "Sony DSC-F1 TWAIN 1.5"

To handle Digital Still Camera images on your PC, use the installer to install "Sony Digital Still Camera Album Utility" and "Sony DSC-F1 TWAIN 1.5."

- 1 Turn on your PC and start up Windows 95.
- 2 Insert the supplied CD-ROM into the CD-ROM drive on your PC .
- 3 For Windows 95, click the [Start] button and then click [Run].
For Windows 3.1, open the Program Manager or File Manager and choose [Run] in the [File] menu.
The [Run] dialog box appears.
- 4 In the command line entry box, type the drive letter for your CD-ROM drive followed by a colon (:), and a backslash (\), and then type the characters "DSCAlbum***\Setup.exe."
For example, if your CD-ROM is on drive D and your language install option (***) is "English"
type: d:\DSCAlbum\English\Setup.exe

The destination drive and directory

The drive and directory are by default set to "C:\SONYDSC\." Usually, use the default ones. If you want to install the software to another drive or directory, type the drive or directory name in the text box.

- 5 Click [Install].
The confirmation window for installation appears.
- 6 Click [Yes].
Installation starts up. When all the files and programs are copied, the dialog box appears.
- 7 Click [OK].
The installation is completed.

Uninstalling the software

When the software becomes unnecessary, remove all the software files from your hard disk as follows:

- 1** Follow the steps 1 to 4 on page 18 to display the [Sony DSC Setup] dialog box.
- 2** Click [Uninstall].
The confirmation window for uninstallation appears.
- 3** Click [Yes].
The component files are deleted from your hard disk.
- 4** Click [Exit].

2 Installing Microsoft Windows 95 Infrared Communications Driver

To perform infrared communications with the Digital Still Camera, use the installer to install "Microsoft Windows 95 Infrared Communications Driver Version 2.0." Install this driver software if it is not installed on the Windows 95 of your PC. You can use this driver under Windows 95 only. When using Window 3.1, do not install this driver.

- 1** Turn on your PC and start up Windows 95.
- 2** Insert the supplied CD-ROM into the CD-ROM drive on your PC .
- 3** Click the [Start] button and then click [Run].
The [Run] dialog box appears.
- 4** In the command line entry box, type the drive letter for your CD-ROM drive followed by a colon (:), and a backslash (\), and then type the characters "infrared***\setup.exe."
For example, if your CD-ROM is on drive D and your language install option (***) is "English" type:
d:\infrared\English\setup.exe

continued

Tip

You can check to see if this driver software is installed by opening the Control Panel and looking for "Infrared Monitor."

Note

You need the infrared communication device to use this driver software.

***Language install option

You can select the language among English, French or German. Type one of these language options in the directory described as "****" in step 4.

For the file name of the installer, refer to the files contained in each language folder: The file named "Setup.exe" or "Install.exe" is the installer.

Connecting via infrared port

5 Click [OK] .

The [Infrared Device Wizard] starts up. Follow the instructions on your screen, referring to the “Setting the infrared device wizard” on the following, to continue the setup process.

Setting the Infrared Device Wizard

Hardware manufacturer and the model name

- When using a lap-top or desktop PC with the built-in infrared communications device, select “Lap-top/Desktop built-in infrared port.”
- When using a PC with an infrared adapter connected to the RS-232C port, select the manufacturer and model names of the adapter.
- When you cannot find your adapter in the list, select “Disk.” In case no disk is attached, contact the manufacturer of the adapter.

Port to which the infrared driver is installed

Select the port to which the infrared device is physically connected.

- When using a lap-top or desktop PC with the built-in infrared communications device, select the port number allocated to the infrared communications device.
- When using a PC with an infrared adapter connected to the RS-232C port, select the RS-232C port number.

Simulation (virtual) port

Select the port number supported by the infrared communications driver. Usually use the default port number. In the Settings dialog box of an infrared communications application such as the “Sony Digital Still Camera Album Utility,” the same port number as set here should be specified.

Note

If the built-in infrared communications device is set to OFF, you cannot set the port number on the screen. Refer to the PC manual to set it to ON.

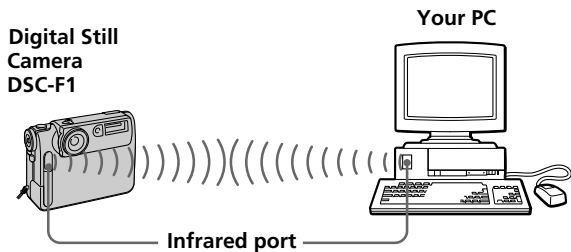
Notes

- Place the infrared ports of the camera and PC within the controllable area. Do not place them too far nor too close, which may interrupt transferring or cause noises.
- Do not cover the infrared ports with your hand or any other objects.
- Infrared rays cannot pass through a wall, opaque glass, etc. If they pass through glass, etc., the controllable distance becomes short.
- Do not turn off the power of the camera or interfere with communication during transmitting the data, which may cause a transmission failure.
- We suggest you use the Digital Still Camera with the AC power adapter.
- Also refer to the online manual of the Infrared Data Communications Driver.

Uninstalling the software

When the software becomes unnecessary, remove all the software files from your hard disk as follows:

- 1** Select [Add/Remove Programs] in the Control Panel.
- 2** Select "Infrared Support for Windows 95 Version 2.0" in the [Add/Remove Programs Properties] and double-click [Add/Remove].

4 Connecting the Digital Still Camera

- Place the infrared port located on the front panel of the Digital Still Camera DSC-F1 and that of your PC face to face so that you can transmit image data from the camera to the PC or vice versa. (Controllable area is about 4 - 12 inches (10 - 30 cm) in terms of straight line distance and 15 degrees right, left, up and down each in terms of conical angle.)
- Check the Status tag of the Infrared Monitor in the Control Panel to see if the infrared device is detected.
- The figure above is an example of connecting the Digital Still Camera with a PC with the built-in infrared communications device. You can also use a PC equipped with an infrared adapter.

continued

Connecting via infrared port

To resume data transmission

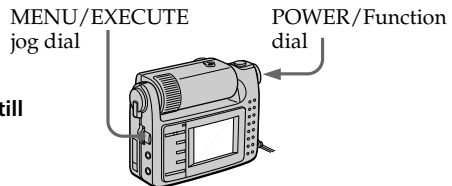
In case the data transmission is interrupted (and the Digital Still Camera becomes disabled), resume the transmission as follows :

- 1 Close all the windows of "Sony Digital Still Camera Album Utility" being displayed on the PC monitor.
- 2 Turn the POWER/Function dial of the Digital Still Camera to "OFF."
- 3 Turn the POWER/Function dial to "PLAY."
- 4 Transmit the data again.

5 Setting up the Digital Still Camera

Before you start data communications between the PC and the Digital Still Camera, set up the Digital Still Camera as follows. For the details, refer to the instruction manuals of the Digital Still Camera DSC-F1.

Digital Still
Camera
DSC-F1



- 1 Set the POWER/Function dial to "PLAY."
- 2 To activate the data transmission via the infrared port, set the WIRELESS menu to ON. (Setting with the SERIAL menu is not necessary.)



The Digital Still Camera is ready for communication via cable.

Notes

- Do not set the POWER/Function dial to "CAMERA," which may occur data transmission error.
- During the data communication in process, do not change the position of the POWER/Function dial.

Starting “Sony Digital Still Camera Album Utility”

Using Windows 95

- 1 Start up Windows 95 on your PC.
- 2 Click the [Start] button on the taskbar.
- 3 Point to [Programs] and to [Sony], and then click [Sony Digital Still Camera Album Utility].

The “Sony Digital Still Camera Album Utility” starts up.



The main window appears.



Quitting the “Sony Digital Still Camera Album Utility”

Select [Exit] in the File menu.

Using Windows 3.1

- 1 Start Windows 3.1 and run the Program Manager and double-click “Sony” group.
- 2 Double-click “Sony Digital Still Camera Album Utility” icon and select [Open] in the Icon menu.

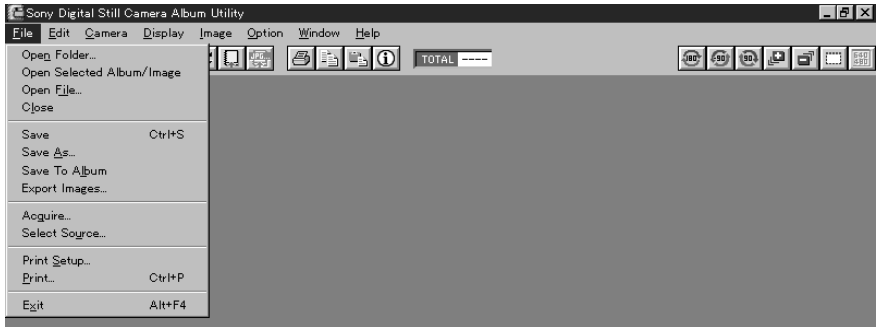
Quitting the “Sony Digital Still Camera Album Utility”

Select [Exit] in the File menu.

About the menus

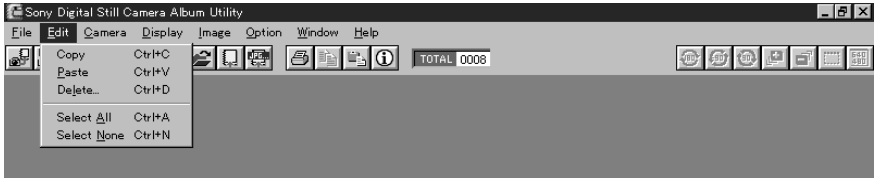
The “Sony Digital Still Camera Album Utility” consists of the following menus. For frequently used menu items, you can use the tool bar buttons (page 29).

File menu



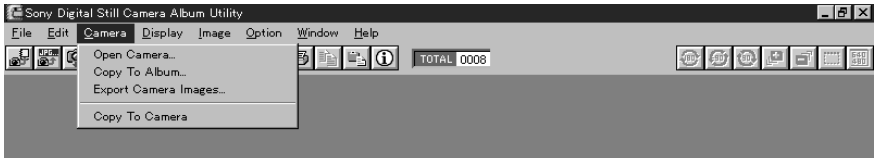
Open Folder	Opens an album folder that is stored in the hard disk or MO disk and displays images of the album.
Open Selected Album/Image	Opens and displays the selected album(s) or image(s) at a time.
Open File	Opens and displays an image file from the hard disk or MO disk. The available file types are BMP, TIFF, JPEG and PMP (Album).
Close	Closes the currently active window.
Save	Saves the image rotated in the album.
Save As	Saves the currently selected image with another file name onto the selected folder. The available file types are BMP, TIFF, and JPEG.
Save To Album	Saves the image(s) selected in the image list or a BMP, TIFF, or JPEG file onto the album in the hard disk.
Export Images	Saves the image(s) selected in the image list onto the desired folder. The available file types are BMP, TIFF, and JPEG.
Acquire	Acquires an image file from the TWAIN source.
Select Source	Selects a TWAIN source such as a digital scanner.
Print Setup	Selects the model name of the printer, paper, and other settings. (The printer driver needs to be installed prior to printing.)
Print	Displays the dialog box to print an album list, image list, and image.
Exit	Exits “Sony Digital Still Camera Album Utility.”

Edit menu



Copy	Copies the selected image to the clipboard.
Paste	Pastes an image of the clipboard. (You cannot use this command if no image is in the clipboard.)
Delete	Deletes the selected albums or images of an album.
Select All	Selects all the albums in the album list or all the images in the image list.
Select None	Cancel the selection in the album list or image list.

Camera menu

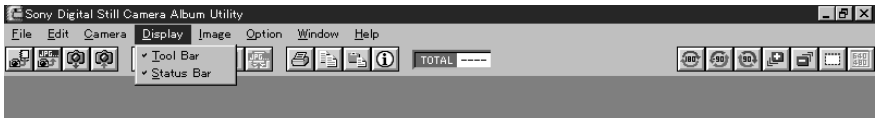


Open Camera	Opens and displays the camera image list or the image on the monitor.
Copy To Album	Saves all the images or selected images of the camera to the album on the hard disk in the album format without opening them.
Export Camera Images	Saves all the images or selected images of the camera to the desired folder on the hard disk in the BMP, TIFF or JPEG file type without opening them.
Copy to Camera	Transfers the images from the hard disk to the camera.

continued

About the menus

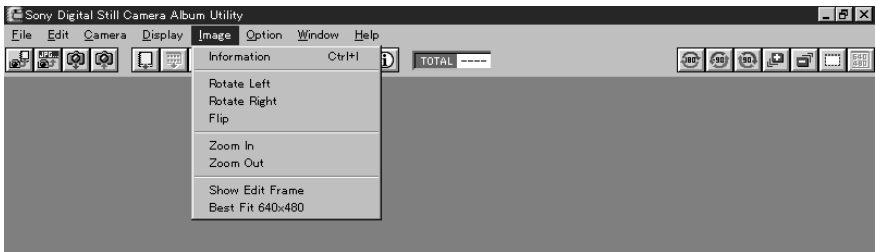
Display menu



Tool Bar	Displays (with a check mark) or hide (without a check mark) the tool bar.
----------	---

Status Bar	Displays (with a check mark) or hide (without a check mark) the status bar.
------------	---

Image menu (When an image is displayed)



Information	Displays the information about the opened image or selected image in the image list.
-------------	--

Rotate Left	Rotates the image 90 degrees counterclockwise.
-------------	--

Rotate Right	Rotates the image 90 degrees clockwise.
--------------	---

Flip	Rotates the image 180 degrees.
------	--------------------------------

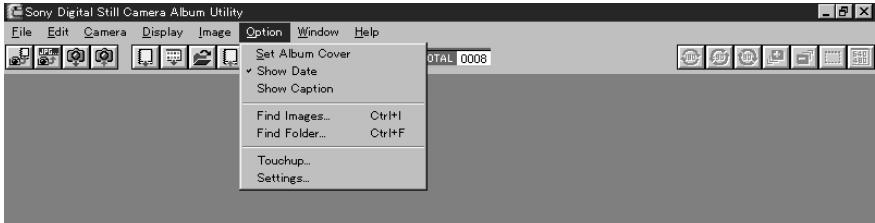
Zoom In	Enlarges the displayed image size.
---------	------------------------------------

Zoom Out	Reduces the displayed image size.
----------	-----------------------------------

Show Edit Frame	Displays the frame for trimming a part of the image.
-----------------	--

Best Fit 640 × 480	Adjusts the size of the image to fit into 640 × 480 pixels. The image is enlarged or reduced without changing its aspect ratio.
--------------------	---

Options menu



Set Album Cover	Sets the selected image in the image list as the album's front cover. You can only select a single image for the cover.
Show Date	Displays the recorded date for each image when the image list is displayed in the window.
Show Caption	Displays the caption for each image in an album when the image list is displayed in the window.
Find Images	Searches for images from your image list by entering the search keys.
Find Folder	Searches for album folders created using older version of this software.
Touchup	Adjusts the colors and contrast of the monitor to eliminate the color differences between the image data and the monitor*.
Settings	Sets the application preferences, such as the serial port and speed.

* Adjusting the colors and the contrast of the monitor

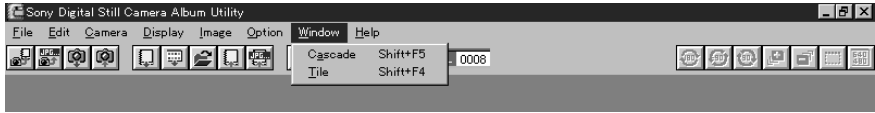
Usually no adjustment is necessary. Only when the color balance degrades under the conditions of use, such as climate and time, adjust the color and contrast as follows:

Colors: Move the scroll bar to the point where you can find that the colors of the right and left sides match as much as possible for red, green, and blue.

Contrast (rate of gamma): Usually set to 1.0. When you adjust the color of the monitor, the rate of gamma that is specifically for the monitor can be adjusted to a certain rate. Adjust the contrast to achieve the same contrast in the case of displaying the data in a different system.

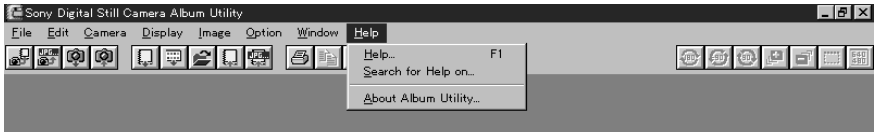
About the menus

Window menu



Cascade	Displays windows like cascades.
Tile	Displays windows like tiles.

Help menu



Help	Calls up the online Help window.
Search for Help on	Searches for Help on the keywords and topics you enter.
About Album Utility	Displays the version number of this program.





















Keyboard shortcuts

The descriptions including “Ctrl + C,” “Shift + F5” and “Alt + F4” next to the file menu stand for keyboard shortcuts. (“+” means pressing the two buttons at the same time and F means a function key.)

Using the tool bar

The tool bar shortcuts to frequently used menu items.



-  **Open Camera:** Opens and displays the camera images on the monitor.
-  **Copy To Album:** Saves the camera images to the album on the hard disk in the album format without opening them.
-  **Export Camera Images:** Saves the camera images to the desired folder on the hard disk in the BMP, TIFF, or JPEG format without opening them.
-  **Copy to Camera:** Transfers the images to the camera.
-  **Open Folder:** Opens and displays the album stored in the hard disk.
-  **Open Selected Album/Image:** Opens and displays the multiple images selected in the image list simultaneously.
-  **Open File:** Opens and displays the image file of the PMP (album), BMP, TIFF, or JPEG file type stored in the hard disk.
-  **Save To Album:** Saves the selected image to the album on the hard disk.
-  **Export Images:** Saves the selected image in the desired folder on the hard disk in the BMP, TIFF, or JPEG file type.
-  **Print:** Displays the dialog box to print an image, image list, or album list.
-  **Copy:** Copies the selected image to the clipboard.
-  **Paste:** Pastes an image of the clipboard. (You cannot use this command if no image is in the clipboard.)
-  **Information:** Displays the information about the opened image or selected image in the image list.
-  **Rotate Left:** Rotates an image 90 degrees in the counterclockwise direction.*
-  **Rotate Right:** Rotates an image 90 degrees in the clockwise direction.*
-  **Flip:** Rotate an image 180 degrees.*
-  **Zoom In:** Enlarges the displayed image size.**
-  **Zoom Out:**Reduces the displayed image size.**
-  **Show Edit Frame:** Displays the frame for trimming a part of the image. *
-  **Best Fit 640 X 480:** Adjusts the size of the image to fit into 640 × 480 pixels. The image is magnified or reduced without changing its aspect ratio.

* To save the image rotated, select [Save] in the File menu.

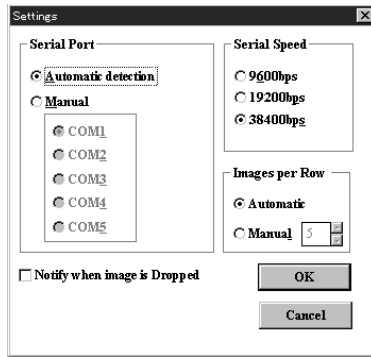
** You can change the display size only; you cannot save an image zoomed in or out.

Changing system settings

Set the program settings according to your PC and monitor.

- 1 Start the “Sony Digital Still Camera Album Utility.”
- 2 Select [Settings] in the Option menu.

The [Settings] dialog box appears. Set the items.



Notes

- The SERIAL menu defines the serial speed via the connecting cable.
- You may not be able to select the serial speed from the available options according to your PC. Refer to your PC's manual for the available serial speeds.
- When using the infrared port, you do not have to set the Serial Speed.

Serial Port Select [Automatic detection] to automatically set the proper serial port. You can also select [Manual] and select the available COM port which the camera is connected. When using the infrared port, select the same port number as the simulation port specified in the Infrared Device Wizard.

Serial Speed Set the serial speed as selected in the SERIAL menu of the DSC-F1 when connecting via cable. Certain setting may be disabled due to limitation inherent to your computer system.

Images per Row List Select the number of the thumbnail images displayed per row in the album list and image list. Usually, select [Automatic] to display as many images as possible. You can also select [Manual] to select the number.

Notify when image is Dropped Check the check box to display the confirmation message when you drag and drop an image.

- 3 Click [OK].

The settings are changed.


Opening the camera images

To view images in the Digital Still Camera DSC-F1, open the camera images.

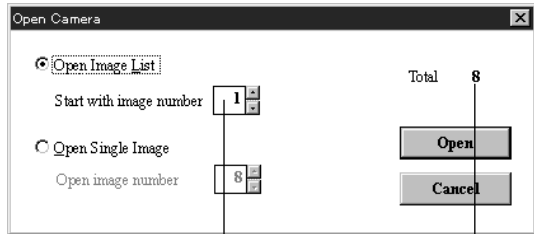
Before you start

Make sure you have done the necessary preparations as described in pages 13 through 22.

Opening the image from the image list window

- 1 Select [Open Camera] in the Camera menu or click  on the tool bar.

The following dialog box appears.



The image to be displayed at the beginning.

The total number of the images stored in the camera

- 2 Click [Open Image List] and input the image number which you want to start the image list with in the [Start with image number] box.

Use the numeric keys to specify the image number or click up arrow to increase or down arrow to decrease the number.

- 3 Click [Open].

The selected thumbnail images are transferred from the camera (the camera icon is displayed in red) and the image list of the camera is displayed.

continued

Opening the camera images

Switching the caption and date display of an image

Select either [Show Caption] or [Show Date] in the Options menu. You can change the caption.

Displaying other thumbnails

When hidden pages exist, the scroll bar appears.

To scroll rows on a page, click either up or down arrow.

To scroll page by page, click somewhere between the arrow and the handle.

To display the desired page quickly, drag the handle.

Status bar

The status bar shows program information, such as the progress of a time consuming task. Depending on window content, information such as file path name, number of images and image size is displayed.



Image number

Caption or date display

Status bar

Camera icon

(Communication starts with camera.)


The following icons on an image stand for:



Selected as album front cover. You can change the album front cover with [Set Album Cover] in the Option menu (see page 54).



Protected from accidental erasure and editing (see page 66).

- 4 Click the thumbnail(s) you want to open (the selected thumbnail frame becomes yellow) and select [Open Selected Album/Image] in the File menu. Or, double-click the image or click  on the tool bar.

The selected images are displayed in full size.



How to select images in the image list

❑ Selecting an image

Click the desired thumbnail of the image; the image is selected. Click another thumbnail and that image is selected instead of the previous image.

❑ Selecting multiple images

To select the images each isolated: Press and hold down the Ctrl key as you click the left button of the mouse on the desired images.

To select the images in succession: Press and hold down the Shift key as you click the left button of the mouse on the desired images.

To select all the images in the image list: Select [Select All] in the Edit menu.

To cancel the selection: Click the right button of the mouse on the selected image. Select [Select None] in the Edit menu to cancel the selection of all the images.



To open the multiple selected images: Double-click the left button of the mouse on one of the selected images as you hold down the Shift or Ctrl key. Or select [Open Selected Album/Image] in the File menu; all the selected images are opened.

Closing an album list, image list or image

Select [Close] in the File menu or click the close button. The selected window is closed.


Switching the active window

An album list window, an image list window and an image window are displayed in cascade. You can switch the active window (the window selected and displayed front) using the following:

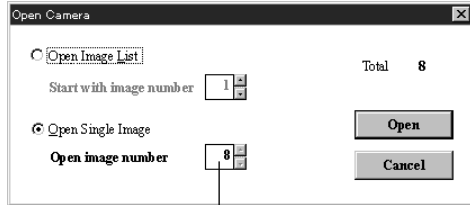
- Click the desired window listed in the Window pull-down menu.
- Click a part of the desired window. You can easily select the window by selecting [Tile] in the Window menu to display all the windows in tile .
- Point to  in the album list and image list windows or  in an image window in the title bar and click [Next Window] until the desired window displays active.

continued

Opening the image directly

- 1 Select [Open Camera] in the Camera menu or click  on the tool bar.

The following dialog box appears.



In the initial status, the image number currently displayed on the camera.

- 2 Click [Open Single Image] and input the image number which you want to open in the [Open image number] box.

Use the numeric keys to specify the image number or click up arrow to increase or down arrow to decrease the number.

- 3 Click [Open].

The selected images are displayed in full size.




Saving the camera images in album

To quickly handle and process camera images on your PC, save the selected camera images in album of the hard disk with or without opening them. The album is stored in the album folder of the Dscalbum folder in the each drive's root directory.

Opening and saving the camera images

- 1 Follow the steps 1 through 3 of “Opening the camera images” (page 31) to display the image list of the camera.



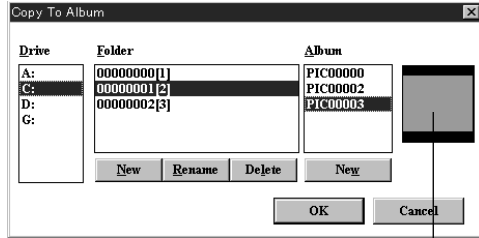
- 2 Click the thumbnails of the desired images. To save all the images, select [Select All] in the Edit menu.
The frame of the selected image is highlighted in yellow.
- 3 Select [Save To Album] in the File menu or click  on the tool bar.
The following dialog box appears.

continued

Saving the camera images in album

Deleting and renaming an album folder

Select the desired album folder in the [Folder] list box and click [Delete] or [Rename].



Album cover thumbnail

Creating a new album folder

In the [Folder] list box, album folders contained in the Dscalbum folder of the root directory are listed with the album caption. To add a new album folder to the list, click [New] under the list box. In the [Album Title] dialog box, input the new folder name and click [OK].

Creating a new album

In the [Album] list box, albums contained in the selected album folder are listed. Each album folder can store the maximum of 30 albums, including no more than one empty album. Therefore, you can add only one new album, namely an empty album without album cover thumbnail. To create the new album "PIC*****" (*: number), click [New] under the list box.

- 3 Select the destination album folder and album to which the images are to be saved and click [OK].

Each image is stored in the specified album with a file name "psn*****" (*: number).

Stopping saving midway

Press the [Esc] key. (You cannot stop saving in the infrared data communication.)

Note

After saving an image, do not change the name of the file or folder nor delete them with the Explorer. Doing so will prevent displaying an album on the monitor.

When you should delete an image, select [Delete] in the Edit menu of the "Sony Digital Still Camera Album Utility."


Note

When the image list or images of the camera are displayed, close them before selecting [Save To Album].

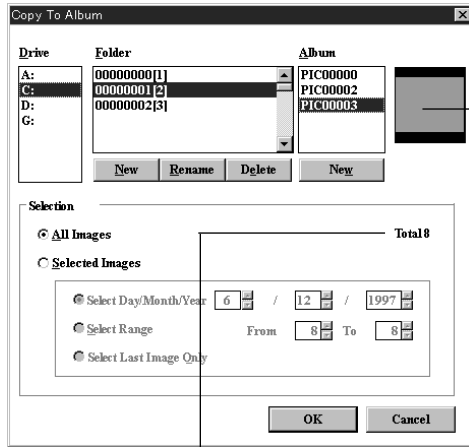
Deleting and renaming an album folder

Select the desired album folder in the [Folder] list box and click [Delete] or [Rename].

Saving all the camera images without opening them

- 1 Select [Save To Album] in the Camera menu or click  on the tool bar.

The following dialog box appears.



The total number of the images stored in the camera Album cover thumbnail

- 2 Click the option button of [All Images] in the [Selection] block and click [OK].

Creating a new album folder

In the [Folder] list box, album folders contained in the Dscalbum folder of the root directory are listed with the albums folder caption. To add a new albums folder to the list, click [New] under the list box. In the [Album Title] dialog box, input the new folder name and click [OK].

Creating a new album

In the [Album] list box, albums contained in the selected album folder are listed. Each album folder can store the maximum of 30 albums, including no more than one empty album. Therefore, you can add only one new album, namely an empty album without album cover thumbnail. To create the new album "PIC*****" (*: number), click [New] under the list box.

continued

Saving the camera images in album

Stopping saving midway

Press the [Esc] key. (You cannot stop saving in the infrared data communication.)

Note

After saving an image, do not change the name of the file or folder nor delete them with the Explore. Doing so will prevent displaying an album on the monitor.

When you should delete an image, select [Delete] in the Edit menu of the "Sony Digital Still Camera Album Utility."


Note

When the image list or images of the camera are displayed, close them before selecting [Save To Album].

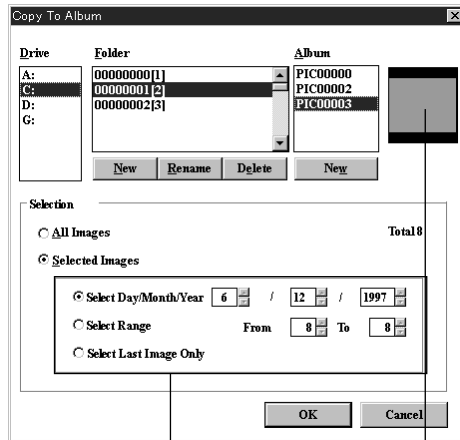
- 3 Select the destination album folder and album to which the images are saved and click [OK].

Each image is stored in the specified album with a file name "psn*****" (*: number).

Saving the selected camera images without opening them

- 1 Select [Save To Album] in the Camera menu or click  on the tool bar.

The following dialog box appears.



Specifying the images to be stored

Album cover thumbnail

- 2 Click the option button of [Selected Images] in the [Selection] block.

- 3 Select the images to be saved.

Select Day/ Month/Year Click up or down arrow or directly input the date. All the images stored in the date are to be saved.

Select Range Click up or down arrow or directly input the image numbers of the first (From) and last (To) images to be saved. All the images between the specified numbers are to be saved. If you want to save only one image, specify the same image number for both the boxes.

Select Last Image Only The last image stored is to be saved.

Deleting and renaming an album folder

Select the desired album folder in the [Folder] list box and click [Delete] or [Rename].

Stopping saving midway

Press the [Esc] key. (You cannot stop saving in the infrared data communication.)

Note

After saving an image, do not change the name of the file or folder nor delete them with the Explore. Doing so will prevent displaying an album on the monitor. When you should delete an image, select [Delete] in the Edit menu of the "Sony Digital Still Camera Album Utility."

Creating a new album folder

In the [Folder] list box, album folders contained in the Dscalbum folder of the root directory are listed with the albums folder caption. To add a new albums folder to the list, click [New] under the list box. In the [Album Title] dialog box, input the new folder name and click [OK].

Creating a new album

In the [Album] list box, albums contained in the selected album folder are listed. Each album folder can store the maximum of 30 albums, including no more than one empty album. Therefore, you can add only one new album, namely an empty album without album cover thumbnail. To create the new album "PIC****" (*: number), click [New] under the list box.

- 3 Select the destination album folder and album to which the images are saved and click [OK].

Each image is stored in the specified album with a file name "psn****" (*: number).

Saving the camera images as another file format

Note

When saving an image as standard file format, part of the image information may not be saved.

To quickly handle and process camera images on your PC, save the selected camera images as standard file format including BMP, TIFF or JPEG with or without opening them.

Selecting the file type

BMP	The bitmap format supported generally by Windows. The file extension is ".bmp."
TIFF	Stands for Tagged Image File Format, which is widely used to store a bitmap image of various resolutions. The file extension is ".tif."
JPEG	Stands for the group named "Joint Photographic Experts Group," who standardized the compression system of the still image. The image is compressed in a small data size, but the original image cannot be perfectly reproduced. The file extension is ".jpg."


Opening and saving the camera images

- 1 Follow the steps 1 through 3 of "Opening the camera images" (page 31) to display the image list of the camera.

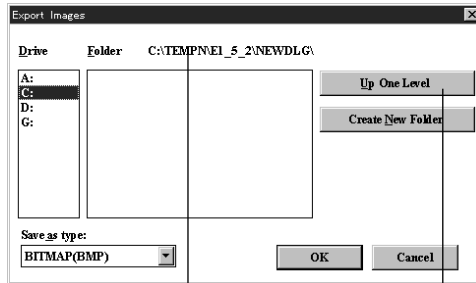


- 2 Click the thumbnails of the desired images. To save all the images, select [Select All] in the Edit menu.

The frame of the selected image is highlighted in yellow.

- 3 Select [Export Images] in the File menu or click  on the tool bar.

The following dialog box appears.



Currently selected folder

Displays the folders of one level upper than the currently selected folder in the list box.

- 4 Select the destination drive and folder in which the images are to be saved and file type.

To select the drive: Click the desired drive in the [Drive] list box.

To select the folder: Double-click the desired folder in the [Folder] list box so that the folder is displayed as currently selected folder above the list box.

To select the file type: Click the file type in the [Save as type] drop-down list box.

Creating a new folder

In the [Folder] list box, folders contained in the currently selected folder are listed. To add a new folder to the list, click [Create New Folder]. In the [Set Folder Name] dialog box, input the new folder name and click [OK].

continued

Saving the camera images as another file format

Stopping saving midway

Press the [Esc] key. (You cannot stop saving in the infrared data communication.)

Note

If you select TIFF, the file is created in Class R.

5 Click [OK].

Each image is stored in the specified folder in the specified file type with a file name "psn*****" (*****: serial number). The file is automatically numbered in serial starting from one larger number than the largest number of the files already stored in the currently selected folder.


Saving in JPEG file type

When you select [JPEG] file type and click [OK], the dialog box to define the image quality (compression ratio) appears. You can select the image quality within the range from 1 to 100.

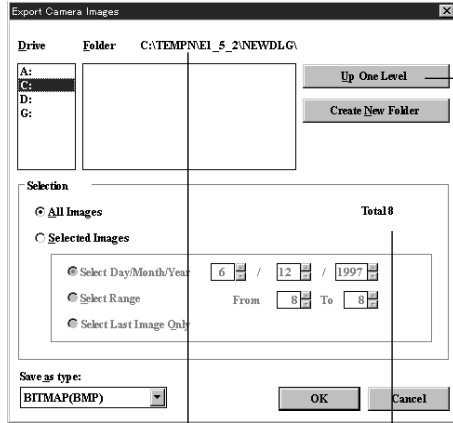


Usually, the larger number you select, the lower compression ratio with the better image quality you get. The file size, however, becomes larger. Click [OK] to save the image.

Saving all the camera images without opening them

- 1 Select [Export Camera Images] in the Camera menu or click  on the tool bar.

The following dialog box appears.



Currently selected folder

The total number of images stored in the camera

Displays the folders of one level upper the currently selected folder in the list box.

- 2 Click the option button of [All Images] in the [Selection] block.
- 3 Select the destination drive and folder in which the images are to be saved and file type.

To select the drive: Click the desired drive in the [Drive] list box.

To select the folder: Double-click the desired folder in the [Folder] list box so that the folder is displayed as currently selected folder above the list box.

To select the file type: Click the file type in the [Save as type] drop-down list box.

continued

Saving the camera images as another file format

Stopping saving midway

Press the [Esc] key. (You cannot stop saving in the infrared data communication.)

Note

If you select TIFF, the file is created in Class R.

Creating a new folder

In the [Folder] list box, folders contained in the currently selected folder are listed. To add a new folder to the list, click [Create New Folder]. In the [Set Folder Name] dialog box, input the new folder name and click [OK].

4 Click [OK].

Each image is stored in the specified folder in the specified file type with a file name "psn*****" (*****: serial number). The file is automatically numbered in serial starting from one larger number than the largest number of the files already stored in the currently selected folder.

Saving in JPEG file type


When you select [JPEG] file type and click [OK], the dialog box to define the image quality (compression ratio) appears. You can select the image quality within the range from 1 to 100.



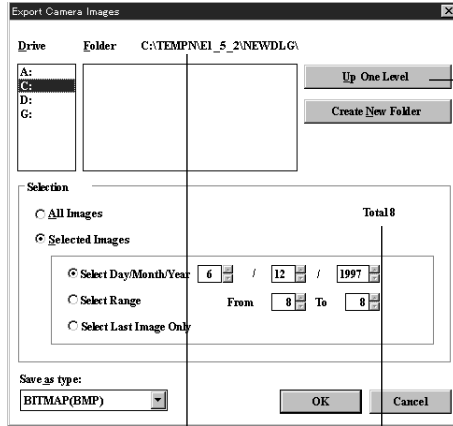
Usually, the larger number you select, the lower compression ratio with the better image quality you get. The file size, however, becomes larger.

Click [OK] to save the image.

Saving the selected camera images without opening them

- 1 Select [Export Camera Images] in the Camera menu or click  on the tool bar.

The following dialog box appears.



Currently selected folder

The total number of images stored in the camera

Displays the folders of one level upper the currently selected folder in the list box.

- 2 Click the option button of [Selected Images] in the [Selection] block.

- 3 Select the images to be saved.

Select Day/ Month/Year Click up or down arrow or directly input the date. All the images stored in the date are to be saved.

Select Range Click up or down arrow or directly input the image numbers of the first (From) and last (To) images to be saved. All the images between the specified numbers are to be saved. If you want to save only one image, specify the same image number for both the boxes.

Select Last Image Only The last image stored is to be saved.

continued

Saving the camera images as another file format

- 4 Select the destination drive and folder in which the images are to be saved and file type.

To select the drive: Click the desired drive in the [Drive] list box.

To select the folder: Double-click the desired folder in the [Folder] list box so that the folder is displayed as currently selected folder above the list box.

To select the file type: Click the file type in the [Save as type] drop-down list box.

Creating a new folder

In the [Folder] list box, folders contained in the currently selected folder are listed. To add a new folder to the list, click [Create New Folder]. In the [Set Folder Name] dialog box, input the new folder name and click [OK].

- 5 Click [OK].

Each image is stored in the specified folder in the specified file type with a file name "psn*****" (*****: serial number). The file is automatically numbered in serial starting from one larger number than the largest number of the files already stored in the currently selected folder.

Saving in JPEG file type

When you select [JPEG] file type and click [OK], the dialog box to define the image quality (compression ratio) appears. You can select the image quality within the range from 1 to 100.



Usually, the larger number you select, the lower compression ratio with the better image quality you get. The file size, however, becomes larger.

Click [OK] to save the image.

Stopping saving midway

Press the [Esc] key. (You cannot stop saving in the infrared data communication.)

Note

If you select TIFF, the file is created in Class R.

Opening an album of the hard disk

Important notice to the users who have used the previous version (Version 1.0) of the "Sony Digital Still Camera Album Utility"

The folders created by the previous version of the software cannot be located with the [Open Folder] command. To locate the folders, select [Find Folder] in the Option menu.


Changing the drive

Click the desired drive in the [Drive] list box so that the album folders contained in the selected drive are listed in the [Folder] list box.

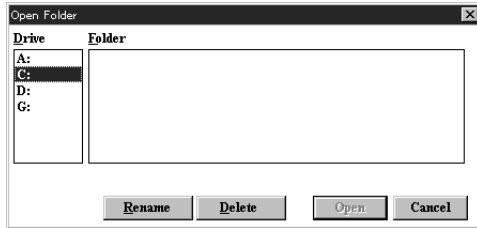
Deleting and renaming an album folder

Select the desired album folder in the [Folder] list box and click [Delete] or [Rename].

You can open the image from the album folder, stored from the Digital Still Camera onto the hard disk in the album format.

- 1 Select [Open Folder] in the File menu or click  on the tool bar.

The following dialog box appears.



- 2 Click the desired album folder in the [Folder] list box and click [OK].

The album thumbnails of the selected album folder are displayed.



Thumbnail of the album contained in the selected album folder

continued

Opening an album of the hard disk

Switching the caption and date display of an image

Select either [Show Caption] or [Show Date] in the Option menu. You can change the caption.

Displaying other thumbnails

When hidden pages exist, the scroll bar appears.

To scroll rows on a page, click either up or down arrow.

To scroll page by page, click somewhere between the arrow and the handle.

To display the desired page quickly, drag the handle.

Status bar

The status bar shows program information, such as the progress of a time consuming task. Depending on window content, information such as file path name, number of images and image size is displayed.

3 Double-click the desired album thumbnail.

The image list of the selected album appears.



Image number
Caption or date display

Status bar
Serial number of the images store in the hard disk

The following icons on an image stand for:



Selected as album front cover. You can change the album front cover with [Set Album Cover] in the Option menu (see page 54).



Protected from accidental erasure and editing (see page 66).

4 Click the image(s) you want to open (the selected image frame becomes yellow) and select [Open Selected Album/Image] in the File menu. Or, double-click the image or click on the tool bar.

For various ways to select images in the image list, refer to page 33. The selected images are displayed in full size.



Closing an album list, image list or images


Click [Close] in the File menu.

Saving the image

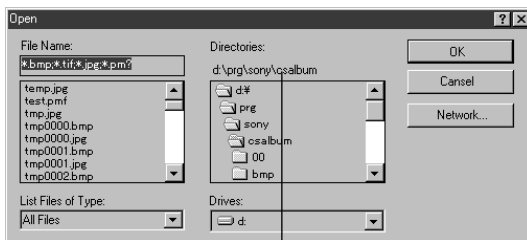
You can save the images in album or other file types. Refer to "Saving the camera images in album" to save them in album format, or "Saving the camera images as another file format" to save them in standard file type including BMP, TIF, and JPEG.

Opening an image file directly

You can open an image stored in the hard disk by designating its file name. In addition to a PMP (album format) file, you can open a BMP, TIF or JPEG file.

- 1 Select [Open File] in the File menu or click  in the tool bar .

The following dialog box appears.



The selected folder

- 2 Select the image file you want to open.
To select the drive: Click the desired drive in the [Drives] drop-down list box.
To open the folder: Double-click the desired folder in the [Directories] list box.
To select the file type: Click the desired file type in the [List Files of Type] drop-down list box. The files of the selected file type are listed in the [File name] list box. Select [All Files] to display the files of all the types.
To select the file name: Click the desired file name in the [File Name] list box or input the file name directly in the text box.
- 3 Click [OK].

The selected image is displayed in full size.



Closing an image

Select [Close] in the File menu or click the close button. The selected window is closed.

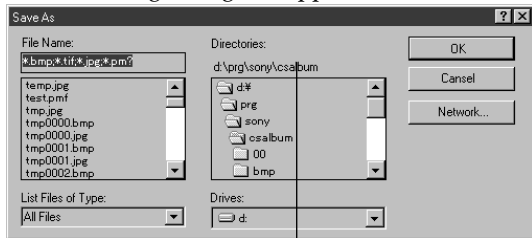
Saving the image in album

You can save the image on the hard disk in an album in the same way as the camera images. “Opening and saving the camera images” of the “Saving the camera images in album” on page 35.

Saving the image as another file format

- 1 Select [Save As] in the File menu.

The following dialog box appears.



The selected folder

- 2 Select the destination drive and folder in which the images are to be saved and file name.

To select the drive: Click the desired drive in the [Drives] drop-down list box.

To select the folder: Click the desired folder in the [Directories] list box.

continued

Opening an image file directly

To select the file type: Click the desired file type in the [List Files of Type] drop-down list box.

To select the file name: Click the desired file name in the [File Name] list box or input the file name directly in the text box.

3 Click [OK].

The image is saved in the selected destination folder in the file format.

Saving in JPEG file type

When you select [JPEG] file type and click [OK], the dialog box to define the image quality (compression ratio) appears. You can select the image quality within the range from 1 to 100.



Usually, the larger number you select, the lower compression ratio with the better image quality you get. The file size, however, becomes larger.

Capturing an image from TWAIN device


What is TWAIN?


TWAIN is the standards software protocol for communication between an application software and a picture-capturing device such as a scanner.

You can capture an image from a device that supports TWAIN protocol.

- 1** Select [Select Source] in the File menu.
The [Select Source] dialog box appears.
- 2** Select the desired device and click [Select].
- 3** Select [Acquire] in the File menu.
- 4** Follow the users' manual of the TWAIN device to acquire an image.

Changing the album front cover

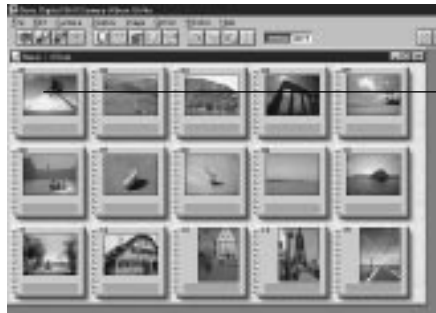
In the image list window, the thumbnail with the  icon is assigned as the album front cover. You can change the album front cover as follows:

- 1** Display the image list stored in the camera or hard disk whose album front cover you want to change.
See “Opening the camera images” (page 31) or “Opening an album of the hard disk” (page 47) for details.
- 2** Click the thumbnail you want to assign as the album front cover image.
The selected thumbnail is highlighted.
- 3** Select [Set Album Cover] in the Option menu.
The  icon, representing the album front cover, is attached to the selected image.



Selected image


- 4** Display the Album list window.
The selected image in step 2 is displayed as album front cover.



Changed album front cover

Changing the caption

Tips

- You can input up to 14 characters for a caption.
- You can also input a caption in the Image Information dialog box. To display the dialog box, select [Information] in the Image menu or click  on the tool bar.

When the date is displayed

Select [Show Caption] in the Option menu. The date display is replaced with the caption display.

You can change the comment of albums or images.

The procedure below describes how to change the image comment. (You can change the album comment in the same way.)

- 1 Display the image list of a camera or the hard disk.
See “Opening the camera images” (page 31) or “Opening an album of the hard disk” (page 47) for details.
- 2 Click the caption box underneath the image thumbnail whose caption you want to change.
The [Image Caption] dialog box appears.



- 3 Type the caption in the dialog box and click [OK].
The caption is changed.



Moving albums or images (drag and drop)

Note

You cannot move a camera image.

Exchanging two images

In the step 2, drag the image while pressing the Ctrl key. The two images, the dragged image and the original image of the destination, exchange positions, moving no other images.



Note

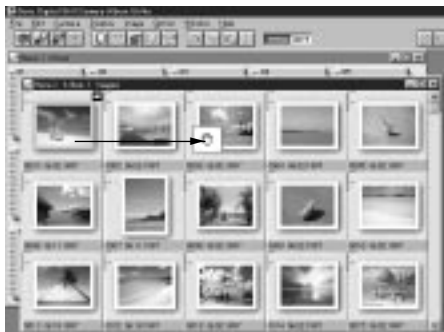
When you select [Notify when image is Dropped] in the Settings dialog box (page 30), the confirmation dialog box appears in the step 3. Click [OK] to drop the album or the image.

You can change the position of an album in the album list or an image in the image list stored in the hard disk.

The procedure below describes how to move an image. (You can move an album in the same way.)

- 1 Display the image list stored in the hard disk.
See "Opening an album of the hard disk" (page 47) for details.
- 2 Drag the desired image.

The drag pointer  moves according to the dragging direction. According to the pointer , move to the position where you want to drop the image.



- 3 Drop the image.

The image is moved to the position, pushing forward or backward the original image and the other images.



Moved image

Copying an image to another album

You can copy an image of an album to another album. When copying, arrange the two album windows in tile.

- 1 Display the image list of the camera or hard disk which includes the image to be copied and then the image list to which you want to copy the image.

See “Opening the camera images” (page 31) or “Opening an album of the hard disk” (page 47) for details.

The two image list windows are displayed in cascade.



- 2 Select [Tile] in the Window menu.

The two image list windows are displayed in tile.




continued

Copying an image to another album

- 3** Drag the desired image.



- 4** Move the dragging pointer  to the album to which you want to copy the image then drop the image.

The image is copied as the last image of the destination album.



Copied image


Note

When you select [Notify when image is Dropped] in the Settings dialog box (page 30), the confirmation dialog box appears in the step 3. Click [OK] to drop the album or the image.

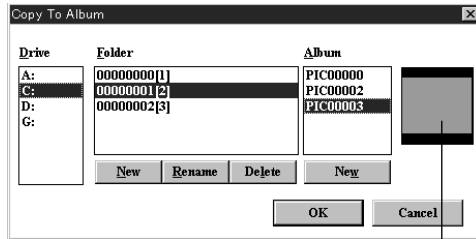
Displaying the windows in cascade again

Select [Cascade] in the Window menu.

Copying with the File menu

- 1 Display the album list or image list and click the thumbnail which you want to copy.
- 2 Select [Save To Album] in the File menu or click  on the tool bar.

The following dialog box appears.



Album cover thumbnail

Creating a new album folder

In the [Folder] list box, album folders contained in the Dscalbum folder of the root directory are listed with the album caption. To add a new album folder to the list, click [New] under the list box. In the [Album Title] dialog box, input the new folder name and click [OK].

Creating a new album

In the [Album] list box, albums contained in the selected album folder are listed. Each album folder can store the maximum of 30 albums, including no more than one empty album. Therefore, you can add only one new album, namely an empty album without album cover thumbnail. To create the new album "PIC*****" (*: number), click [New] under the list box.

- 3 Select the destination album folder and album to which the images are to be saved and click [OK].

Each image is stored in the specified album with a file name "psn*****" (*: number).

Deleting images or albums

Notes

- When deleting an image, double-check that it is the right image. Once deleted, the image is lost forever.
- You cannot delete protected images. To delete them, first cancel the protect setting in the Image Information dialog box (page 66).

You can delete albums or images in an album.

- 1** Open the album list or image list of the camera or hard disk which includes the album(s) or the image(s) to be deleted.

See “Opening the camera images” (page 31) or “Opening an album of the hard disk” (page 47) for details.

- 2** To delete an album, click the desired album thumbnail in the album list; to delete an image, click the desired image thumbnail in the image list.

You can select multiple thumbnails at a time. The selected albums or images are highlighted.

- 3** Select [Delete] in the Edit menu.

The confirmation dialog box appears.



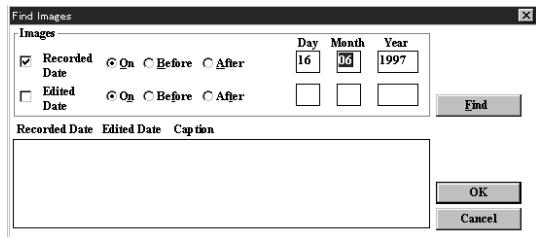
- 4** Click [OK].

The albums or images are deleted.

Searching for images

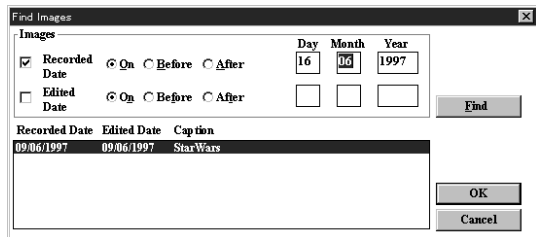
You can search for images using the searching keys of recorded date and edited date .

- 1 Open the image list of the camera or hard disk which includes the image you want to search.
See “Opening the camera images” (page 31) or “Opening an album of the hard disk” (page 47) for details.
- 2 Select [Find Images] in the Option menu.
The [Find Images] dialog box appears.



- 3 Select the searching key by clicking [Recorded Date] and/or [Edited Date].
- 4 Input the recorded or edited date. Select the searching option among “On” (the same date), “Before” (before the date) and “After” (after the date).
- 5 Click [Find].

The searching starts up. The images searched are listed in the box with its recorded date, edited date, and caption.






- 6 Click [OK] to close the dialog box.

Printing images

You can print an album list, an image list, or an image.

- 1 Turn on the power of the printer and make it ready for printing.
- 2 Display the window you want to print.

To print	Do this
an album list	Select [Open Folder] in the File menu or click  in the tool bar.
an image list	Select [Open Camera] in the Camera menu or click  in the tool bar. Double-click the desired album in the album list.
an image	Double-click the desired image in the image list, or select [Open File] in the File menu or click  in the tool bar to designate the image file to be opened.

Note

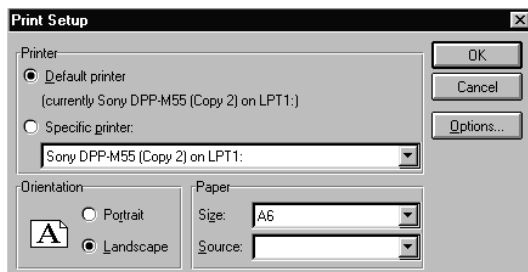
Before you start printing, the printer driver should be installed in your hard disk.

Setting more details

Click [Options] to display the Printer Properties window where you can set more details of the printer's specifications.

- 3 Select [Print Setup] in the File menu.

The [Print Setup] dialog box appears. Set each item according to your printer.



Printer	The printer whose driver is selected is displayed as the [Default printer]. Usually select [Default printer]. To select another printer, click [Specific printer] and select the one from the drop-down list box.
Orientation	Select the orientation of the paper when printed between [Portrait] and [Landscape].
Paper	Select the paper size in [Size], the paper feeder cassette type or manual feeder in [Source].

- 4 Click [OK].
- 5 Select [Print] in the File menu or click  in the tool bar.

The [Print] dialog box appears.



Thumbnail image

Set the following:

Size	Select the output size between [Fit to Page] (printing as large as the print paper allows) and [Actual Size] (printing as shown in the thumbnail image).
Copies	Select the print quantity by clicking the up arrow button to increase the number and the down arrow button to decrease the number.
Brightness	Usually use the default level (0). When the image is too dark, click the right arrow button or drag the handle to the right to increase brightness. To decrease brightness, click the left arrow button or drag the handle to the left.
Initialize	Set the Brightness to the default level (0).

- 6 Click [OK].
- Printing starts up.


Changing the image display size

You can enlarge (zoom in) and reduce (zoom out) an image displayed on the monitor.

Display the image of a camera or hard disk which you want to change the display size. See “Opening the camera images” (page 31) or “Opening an album of the hard disk” (page 47) for details.




Enlarging an image

Select [Zoom In] in the Image menu or click  in the tool bar. The display size of the image is enlarged.



Diminishing an image

Select [Zoom Out] in the Image menu or click  in the tool bar. The display size of the image is reduced.



Notes

- The zoom-in factor can be either 200%, 400%, 800% or 1600%. The zoom-out factor is either 50% or 25%. However, if you select high rate of percentage, some images may not be properly displayed due to the display driver's limit.
- When you zoom in and out an image, only the image displayed on the monitor is changed but the original image does not change.

Rotating an image

You can rotate an image, which is useful to view an image recorded with the camera oriented side ways.


Display the image of a camera or hard disk which you want to change the angle. See “Opening the camera images” (page 31) or “Opening an album of the hard disk” (page 47) for details.

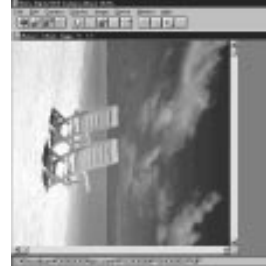


Note


When you rotate an image, only the image displayed on the monitor is rotated but the original image does not change. To save the original image rotated, select [Save] in the File menu.

Rotating an image in clockwise direction

Select [Rotate Right] in the Image menu or click  in the tool bar. Each time you select the menu or tool, the image is rotated 90 degrees in the clockwise direction.




Rotating an image in counterclockwise direction

Select [Rotate Left] in the Image menu or click  in the tool bar. Each time you select the menu or tool, the image is rotated 90 degrees in the counterclockwise direction.




Rotating an image 180 degrees

Select [Flip] in the Image menu or click  in the tool bar. Each time you select the menu or tool, the image is rotated 180 degrees.

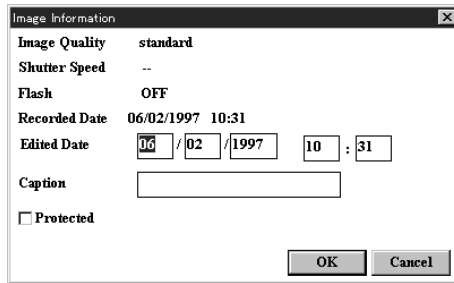


Reviewing the image information

You can view the image information and revise some of the items.

- 1 Display the image or select the image in the image list whose information you want to review.
See “Opening the camera images” (page 31) or “Opening an album of the hard disk” (page 47) for details.
- 2 Select [Information] in the Image menu or click  in the tool bar.

The following dialog box appears.



- 3 Review the settings when the image is recorded.

Image Quality* The image quality mode (compression ratio) when the image is recorded:
FINE/STANDARD/SHOT


Shutter Speed* The shutter speed when the image is recorded.

Flash* The flash is used (ON) or not used (OFF) when the image is recorded.

Recorded Date* The date when the image is recorded.

Edited Date You can manually input the date when the image is transferred or edited.

Caption You can input a caption in the text box.

Protected Check to set the protection(). Do not check to release the protection to edit or delete the image.

* You cannot change from the PC.

- 4 Click [OK] to close the window.

Note

The contents of the dialog box of the image of a standard file format differ.


Transferring an image to the camera

You can transfer a BMP, TIFF, JPEG or PMP image file to the camera. Since the image being stored in the camera is limited to 640×480 pixels, a larger image should be diminished or trimmed.


- 1 Display the image to be transfer to the camera.



- 2 • To adjust the image to fit 640×480 pixels

Select [Best Fit 640×480] in the Image menu or click  in the tool bar. The image is resized to 640×480 pixels. Skip the steps 3 and 4.

- To trim the image to 640×480 pixels or smaller

Select [Show Edit Frame] or click  in the tool bar. The edit frame appears.



- 3 Move the edit frame to assign the area to be transferred.

To adjust the frame size, drag its corner. To move the frame itself, drag somewhere on the frame except for corners.

continued

Note

When transferring a smaller image, select [Best Fit 640×480] in the Image menu.

Transferring an image in the image list

In the image list window, select the image(s) to be transferred. Then select [Copy to Camera] in the Camera menu. The selected image is or images are added to the camera with landscape position. Rotate the image if necessary.




Note

When you change the frame size, select [Best Fit 640×480] in the Image menu.

Transferring an image to the camera

Note

For the image quality, refer to the instruction manual of the Digital Still Camera DSC-F1.

- 4** Select [Copy] in the Edit menu or click  on the tool bar to copy the image inside the edit frame to the clipboard.
Then select [Paste] in the Edit menu or click  on the tool bar to paste the clipboard image to the window.
The edited image is displayed.
- 5** Select [Copy to Camera] in the Camera menu or click  on the tool bar.
The dialog box defining the image quality (FINE, STANDARD, and SNAPSHOT) appears.
- 6** Select the image quality.
The confirmation window appears.
- 7** Click [OK].
The image is compressed in the selected image quality and transferred to the camera.

Transferring camera images to an application which supports the TWAIN protocol


What is TWAIN?

TWAIN is the standards software protocol for communication between an application software and a picture-capturing device such as a scanner. For access to the camera from the TWAIN application, refer to the users' manual of the application you are using.

Note

Depending on the application, the number of images which can be transferred from the camera via TWAIN differs.

Checking the system settings

Click  on the tool bar. The Settings window appears where you can check to see that the items are set according to the system settings you use.

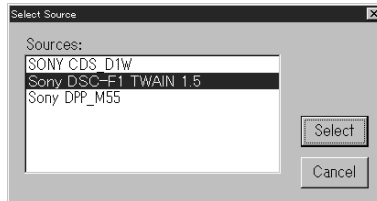
(See "Changing system settings" on page 30.)

By switching the data source driver to "Sony DSC-F1 TWAIN 1.5," you can transfer a camera image directly to an application which supports the TWAIN protocol.

Before you begin

- Do the necessary preparations as described in pages 13 through 22.
- Start the application and display its main menu window.
- Quit the "Sony Digital Still Camera Album Utility" if it has been started. (You cannot start the "Sony DSC-F1 TWAIN 1.5" while the "Sony Digital Still Camera Album Utility" is accessing the camera.)

- 1 Select [Select Source] in the File menu. (The file menu name differs depending on the application.)
The [Select Source] dialog box appears.



- 2 Select [Sony DSC-F1 TWAIN 1.5] and click [Select].
- 3 Select [Acquire] in the File menu. (The file menu name differs depending on the application.)

The Sony DSC-F1 TWAIN 1.5 main menu window appears.



continued


Transferring a camera image to an application which supports the TWAIN protocol

4 Click .

The image list appears immediately.

Transfer button



5 Click the images which you want to transfer to the application, then click .

The selected images are transferred to the application and the application window appears again.



To transfer another image

Repeat steps 3 through 5 or step 5.

Note

Depending on the application, the window closes after the images are transferred. If this occurs, repeat steps 3 through 5.

Troubleshooting

After trying the following remedies, if the problem persists, please consult “Sony Customer Technical Support.” Also refer to the operating instructions of the Digital Still Camera DSC-F1.

An error occurs during data transmission via cable.

- The connecting cable between the PC and the Digital Still Camera is not fitted properly.
 - Connect the cable properly. (page 16)
- The power of the Digital Still Camera is not turned on.
 - Set the POWER/Function dial of the Digital Still Camera to “PLAY.” (page 17)
- The WIRELESS setting of the Digital Still Camera is not proper.
 - Select “OFF” in the WIRELESS menu of the Digital Still Camera. (page 17)
- The serial speed of your computer does not match that of the Digital Still Camera.
 - Select the same serial speed in the Settings dialog box as set in the SERIAL menu of the Digital Still Camera. (page 17)
 - Check that the serial speed selected in the Settings dialog box matches that of your PC. Some PC does not support all of the serial speed options. (page 30)
- The Serial Port in the Settings dialog box is not properly assigned.
 - Assign the Serial Port to which the connecting cable is inserted. (page 30)
- The Serial Port selected in the Settings dialog box may be used by another communication software.
 - Check which serial port the communication software is used and assign another serial port for either the “Sony Digital Still Camera Album Utility” or the communication software.

Note

The SERIAL menu defines the serial speed via the connecting cable.

continued

Troubleshooting

Notes

- You can check the simulation port number and the port which the infrared device is installed: Double-click the [Infrared Monitor] icon in the Control Panel and click the Option tag.
- The hardware port number and simulation port number differ. Set each port number correctly.

An error occurs during infrared data transmission

- The WIRELESS setting of the Digital Still Camera is not proper.
 - Select “ON” in the WIRELESS menu of the Digital Still Camera. (page 22)
- The power of the Digital Still Camera is not turned on or set to “CAMERA.”
 - Set the POWER/Function dial of the Digital Still Camera to “PLAY.” (page 22)
- The infrared device or driver is not properly installed.
 - Check to see if the infrared hardware is built in your PC or an infrared adapter is properly connected to the proper hardware port number.
 - Check to see if the infrared driver is installed in the hard disk. You can check the driver by opening the Option tag of the [Infrared Monitor] in the Control Panel.
- The Serial Port in the Settings dialog box is not properly assigned.
 - Assign the proper simulation port in the Infrared Device Wizard. (page 20)
 - Check to see that the Serial Port in the Settings dialog box of the “Sony Digital Still Camera Album Utility” is properly assigned. (page 30)
- The infrared ports of the Digital Still Camera and the PC are not properly oriented.
 - Place the two ports within the controllable area. Remove an obstacle which may interrupt the infrared communications, if any. Also check the Status tag of the [Infrared Monitor] in the Control Panel to see if the infrared device is detected. (page 21)

The application does not work properly.

- Turn off the Digital Still Camera and quit the application. Then turn on the Camera and restart the application to see if the software and the Camera work properly.

Cannot open the camera's images .

- You cannot access the Digital Still Camera from two or more applications at a time.
 - Quit the other applications once and start "Sony Digital Still Camera Album Utility." Then try to access the camera.

The "Sony DSC-F1 TWAIN 1.5" does not work properly (when the screen saver is working).

- Do not use the screen saver when you use "Sony DSC-F1 TWAIN 1.5." If the screen saver is working, the screen will not be updated while transferring camera images. However, this is not a malfunction and the screen will return to normal after the transfer.

Index

A

- Adjusting the colors and the contrast of the monitor 27
- Adjusting the image to fit 640 × 480 pixels 67
- Album format 9
- Album list 10

B

- BMP 40

C

- Caption 55, 66
- Capturing an image from TWAIN device 53
- Cascade 57
- Changing the album front cover 54
- Changing the caption 55
- Changing the system settings 30
- Connecting
 - via cable 14
 - via infrared port 18
- Copying an image 57
- Copying with the File menu 59

D

- Deleting and renaming an album folder 36
- Deleting images or albums 60
- DIGITAL I/O port 16
- Diminishing an image 64
- Drag and drop 56
- Drag pointer 56

E

- Edit frame 67
- Enlarging an image 64

F, G, H

- Features 8
- File type 40

I

- Image 10
- Image filing system 9
- Image information 66
- Image list 10
- Infrared Device Wizard 20
- Infrared Monitor 19, 71
- Installer 8

Installing 14

- Microsoft Windows 95 Infrared Communications Driver 19
- Sony Digital Still Camera Album Utility 14

J

- JPEG 40

M, N

- Making a new album 36
- Making a new album folder 36
- Making a new folder 41
- Menu
 - Camera menu 25
 - Display menu 26
 - Edit menu 25
 - File menu 24
 - Help menu 28
 - Image menu 26
 - Options menu 27
 - Window menu 28
- Moving albums or images 56

O

- Opening the camera images 31
- Opening an image file directly 50
- Opening an image list of the hard disk 47
- Opening and saving the camera images 35
- Operation flow chart 11

P

- PIC_CAM 9
- Print Setup 62
- Printing 62
- Protection setting 66

Q

- Quitting the “Sony Digital Still Camera Album Utility” 23

R

- Rotating an image 65

S

- Saving
 - Opening and saving the camera images 35, 40
 - Saving all the camera images without opening them 37, 43
 - Saving an image as another file format 51

- Saving the camera images as another file format 40

- Saving the camera images in album 35

- Saving in JPEG file type 42

- Saving the selected camera images without opening them 38, 45

- Searching for images 61

- Selecting an image 33

- Selecting multiple images 33

- SERIAL menu 17

- Serial port 16, 30

- Serial speed 30

- Setting up the Digital Still Camera 17, 22

- Sony DSC-F1 TWAIN 1.5 69

- Starting “Sony Digital Still Camera Album Utility” 23

- Status bar 32

- Stopping saving midway 36

- Switching the active window 33

- Switching the comment and date display of an image 32

- System requirements 12

- System settings 30

T

- Thumbnail 10
- TIFF 40
- Tile 57
- Transferring an image to the camera 67
- Transferring an image in an image list 67
- Transferring camera images to a TWAIN application 69
- Troubleshooting 71
- TWAIN 53, 69

U

- Using the tool bar 29

Z

- Zoom In 64
- Zoom Out 64

For Macintosh

Operating Instructions

Features

What is Plug-in?

The Plug-in is an interface which allows image data transfer from an input device such as a digital scanner and digital still camera to an application. To capture an image of a particular device into a particular application, you need to install the Plug-in module compatible with both the device and the application.

The PC Connecting Kit for Macintosh comprises the connecting cable and the CD-ROM, which includes the following:



DSC-F1 Album

Application software "Sony Digital Still Camera Album Utility"

Captures images from the Sony Digital Still Camera DSC-F1 and edits them:

- Captures Digital Still Camera images with or without opening them and copies them onto the hard disk in the desired file type—PICT, JPEG or the software original album (CAMS) file type.
- The software offers a variety of album and image editing functions: moves the position of images in an album, copies images to a different album, deletes images, and zooms and rotates images.



Sony Digital Still Camera

Plug-in module "Sony Digital Still Camera Plug-in"

Enables direct capturing of images from the Digital Still Camera into PhotoStudio or another application which supports Photoshop Plug-in.

Image filing system of the Album Utility

The "Sony Digital Still Camera album Utility" handles the images in a unique album filing system—"Album" format. You can also handle the images as standard file formats—JPEG and PICT.

Album format

When the Digital Still Camera images are copied onto the hard disk or other storage device, they are stored in the original filing system shown below, which is called the "Album" format. The file type is called "CAMS." The "Album" format enables displaying the images as shown below. The folder containing the images in this album structure is called a "Album Folder."

Image list

A page containing fifteen thumbnails* of the album contained in the Digital Still Camera or the hard disk is displayed. You can select any image.



Image

The selected image is displayed in full size.

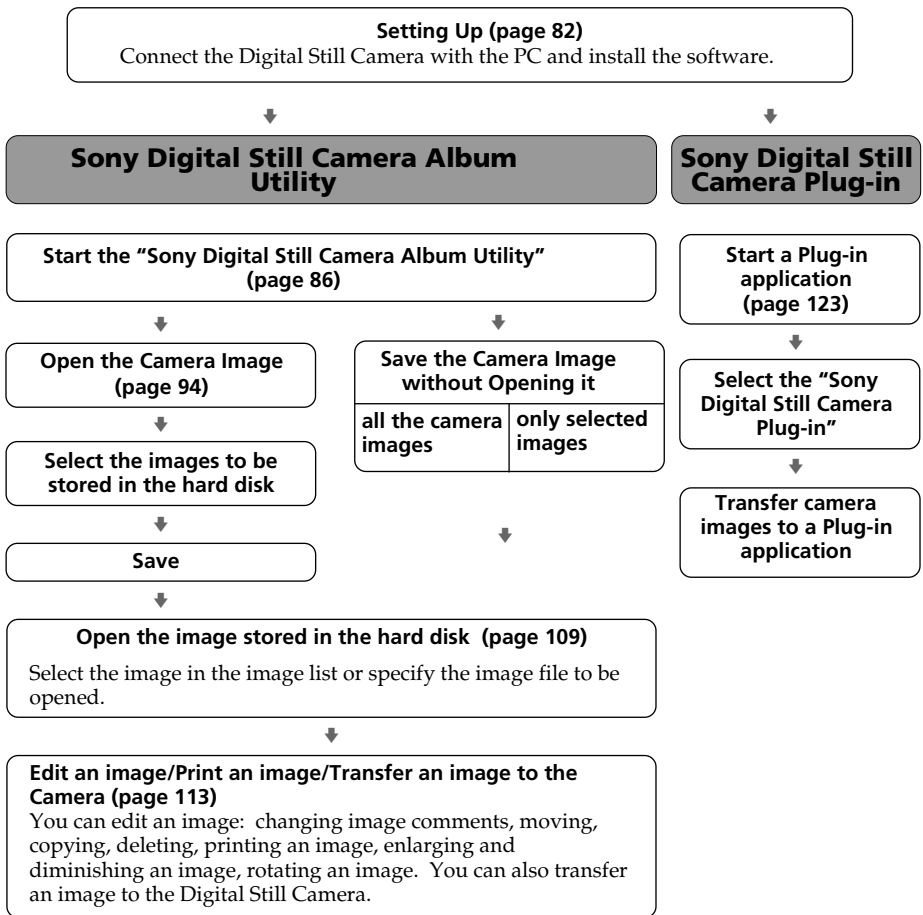


*Thumbnail

Stands for each image in the album list or image list.

Features

Operation flow chart



System requirements

Note

For stable operation of the software, we suggest you use the latest version of the operating system; especially in serial communication, a remarkable improvement has been achieved.

Your computer and system software must meet the following minimum requirements to use this product:


- An Apple Macintosh computer with a 68030 processor or later model/PowerPC 601 or later model
- OS: Apple system software version 7.1 or higher
- Extension: QuickTime version 1.5 or higher for the Sony Digital Still Camera Plug-in
- RAM: 8MB or more for Sony "Digital Still Camera Album Utility" (16MB is recommended.)
- Application memory for the "Sony Digital Still Camera Plug-in:" the application's Suggested size plus 3000KB to the Preferred size of the Memory Requirements
- 40MB or more available hard disk space
- A color monitor with a video board or video driver to display 640 × 480 pixels and 256 colors or better. (16,770,000 full color is recommended.)
- Modem or printer port
- CD-ROM drive

Step 1: Installing the software

*Language install option

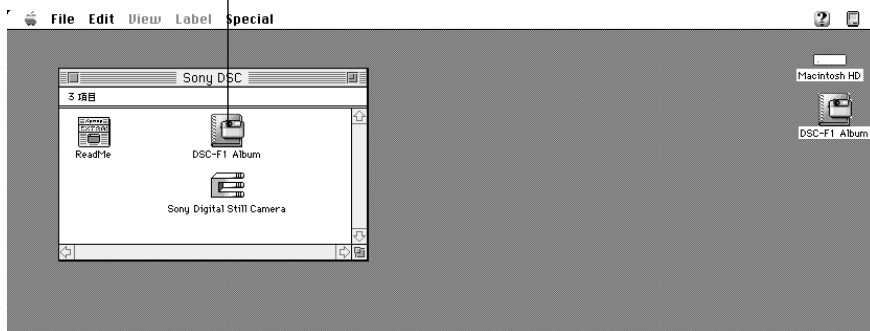
You can select the menu and dialog language among English, French or German.

To transfer Digital Still Camera images onto your PC, install the "Sony Digital Still Camera Album Utility," or/and "Sony Digital Still Camera Plug-in" onto your hard disk.

- 1 Start up your Macintosh.
- 2 Insert the CD-ROM supplied into the CD-ROM drive.
- 3 Open your language folder.
Double-click your language folder* among English, French, and German.
- 4 Install the "Sony Digital Still Camera Album Utility."
Drag the "Sony Digital Still Camera Album Utility" icon  onto your hard disk.

DSC-F1 Album

"Sony Digital Still Camera Album Utility" icon




Note

The folder name to which the “Sony Digital Still Camera Plug-in” is copied differs depending on the application you use.

For example, when you use Adobe PhotoShop 3.0, the plug-in should be copied onto the Acquire/Import folder of the Plug-ins folder.

For the details, refer to the user’s manual of the application.

5 Install the “Sony Digital Still Camera Plug-in.”

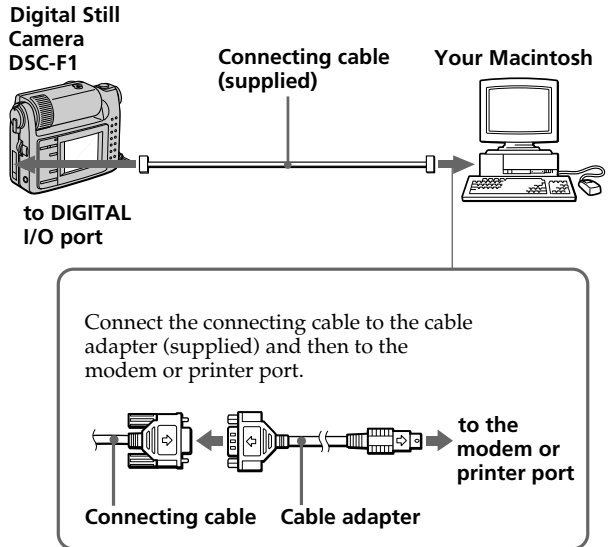
Drag the “Sony Digital Still Camera Plug-in” icon  onto the plug-in folder.

With the “Sony Digital Still Camera Plug-in” copied, you can capture images from the Sony Digital Still Camera DSC-F1 with an application supporting the Adobe Photoshop Plug-in.

Step 2: Connecting the Digital Still Camera

Notes

- Turn off the power on your computer and Digital Still Camera before connection.
- Do not turn off the power of the camera nor disconnect the cable during transmitting the data, which may cause a transmission failure.
- Use only the supplied connecting cable. Other brands of cables may cause malfunctions.
- The connecting cable supplied is for the Sony Digital Still Camera DSC-F1 only. It cannot be used to connect other cameras.
- Insert the connecting cable carefully into the port, making sure that the port goes in straight and is firmly seated. When inserting the cable into the Digital I/O port of the Digital Still Camera, match the Δ mark of the cable with that of the port.
- Keep metal objects away from the connector pins to avoid short circuits.
- We suggest you use the Digital Still Camera with the AC power adapter.
- Also refer to the instructions manual of your Macintosh.



Use the supplied connecting cable to the modem/printer port via the cable adapter to the DIGITAL I/O port on the Digital Still Camera DSC-F1. For a Macintosh with the built-in modem, use the printer port.

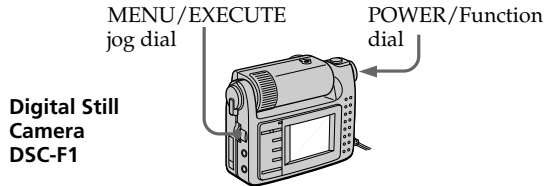
To resume data transmission

In case the data transmission is interrupted (and the Digital Still Camera becomes disabled), resume the transmission as follows :

- 1 Close all the windows of "Sony Digital Still Camera Album Utility" being displayed on the Macintosh monitor.
- 2 Turn the POWER/Function dial of the Digital Still Camera to "OFF."
- 3 Turn the POWER/Function dial to "PLAY."
- 4 Transmit the data again.

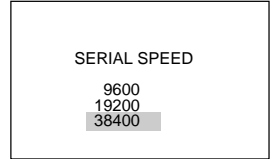
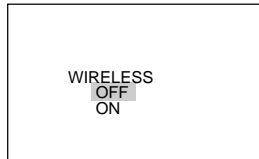
Step 3: Setting up the Digital Still Camera

Before you start data communications between the PC and the Digital Still Camera, set up the Digital Still Camera as follows. For the details, refer to the instruction manuals of the Digital Still Camera DSC-F1.



- 1 Set the POWER/Function dial to "PLAY."
- 2 To activate the data transmission via the connecting cable, set the menu as follows:

Menu	Select
WIRELESS	OFF
SERIAL*	38400**



The Digital Still Camera is ready for communication via cable.

* The SERIAL menu defines the serial speed via the connecting cable.

** "38400" means 38,400 bps.

Note

During the data communication in process, do not change the position of the POWER/Function dial.

Starting “Sony Digital Still Camera Album Utility”

Note

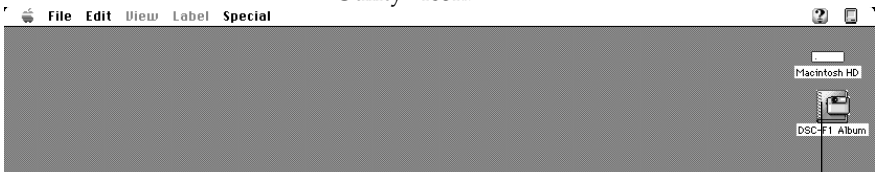
When using the “Sony Digital Still Camera Plug-in” module to transfer camera images into an application which supports the PhotoShop Plug-in protocol, the steps here are not necessary (see page 123).

To capture images from the Digital Still Camera into your Macintosh, start the “Sony Digital Still Camera Album Utility.”

Tip

To open as many windows as possible, we suggest you allocate as much memory as possible to the “Sony Digital Still Camera Album Utility.”

- 1 Start up Macintosh
- 2 Double-click the “Sony Digital Still Camera Album Utility” icon.



“Sony Digital Still Camera Album Utility” icon

The “Sony Digital Still Camera Album Utility” starts up.



The menu bar of the “Sony Digital Still Camera Album Utility” appears.



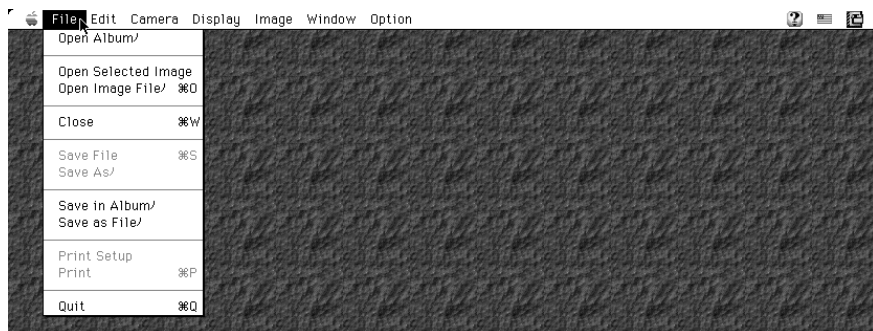
Quitting the “Sony Digital Still Camera Album Utility”

Select [Quit] in the File menu.

About the menus

“Sony Digital Still Camera Album Utility” consists of the following menus. You can also use the tool bar icons to proceed with part of the menu operations (page 91).

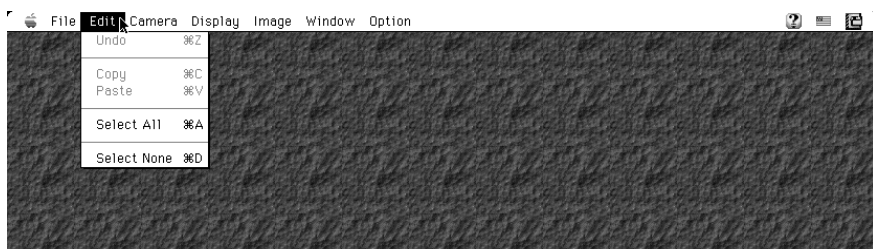
File menu



Open Album	Opens an album that is stored in the hard disk or MO disk and displays images of the album.
Open Selected Image	Opens and displays the selected image(s) in the image list window at a time.
Open Image File	Opens and displays an image file from the hard disk or MO disk. The available file types are PICT, JPEG and Album (CAMS).
Close	Closes the currently active window.
Save File	Saves the image rotation in the album.
Save As	Saves the currently selected image with another file name as a PICT or JPEG file onto the selected folder.
Save in Album	Saves the image(s) selected in the image list onto the album in the hard disk.
Save as File	Saves the currently selected image in the image list as a PICT or JPEG file onto the desired folder.
Print Setup	Selects the model name of the printer, paper, and other settings. (The printer driver needs to be installed prior to printing.)
Print	Displays the dialog box to print an image.
Quit	Exits “Sony Digital Still Camera Album Utility.”

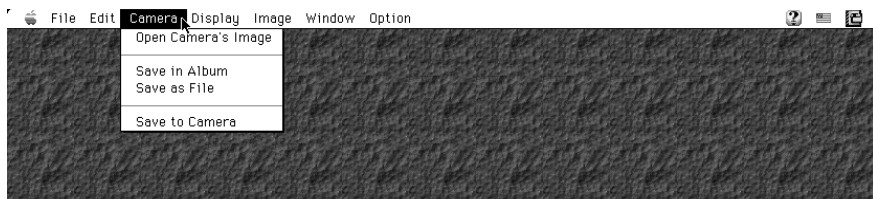
About the menus

Edit menu



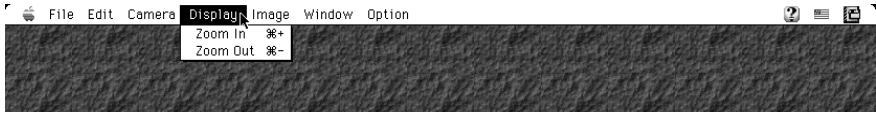
Undo	Undoes the most recent zooming or rotation command.
Copy	Copies the selected image or comment to the clipboard.
Paste	Pastes the comment of the clipboard. (You cannot use this command if nothing is in the clipboard.)
Select All	Selects all the images in the image list window.
Select None	Cancels the selection in the album list or image list window.

Camera menu



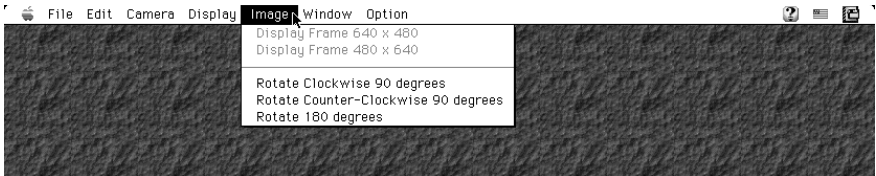
Open Camera's Image	Opens and displays the camera images on the monitor.
Save in Album	Saves all the images or selected images of the camera to the album on the hard disk in the album format without opening them.
Save as File	Saves all the images or selected images of the camera to the desired folder on the hard disk in JPEG or PICT file type without opening them.
Save to Camera	Transfers the images on the hard disk to the camera.

Display menu



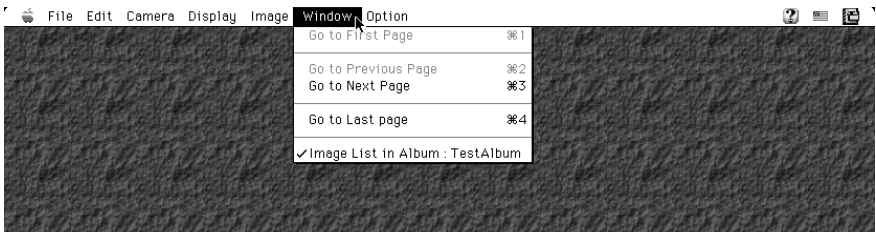
Zoom In	Enlarges the image display size.
Zoom Out	Reduces the image display size.

Image menu



Display Frame 640 × 480	Displays the frame for trimming an image in landscape.
Display Frame 480 × 640	Displays the frame for trimming an image in portrait.
Rotate Clockwise 90 degrees	Rotates the image 90 degrees clockwise.
Rotate Counter-Clockwise 90 degrees	Rotates the image 90 degrees counterclockwise.
Rotate 180 degrees	Rotates the image 180 degrees.

Window menu



Go to First Page	Displays the first page of the image list window.
Go to Previous Page	Displays one page before the current page of the image list window.
Go to Next Page	Displays one page after the current page of the image list window.
Go to Last Page	Displays the last page of the image list window.

continued

About the menus

Option menu

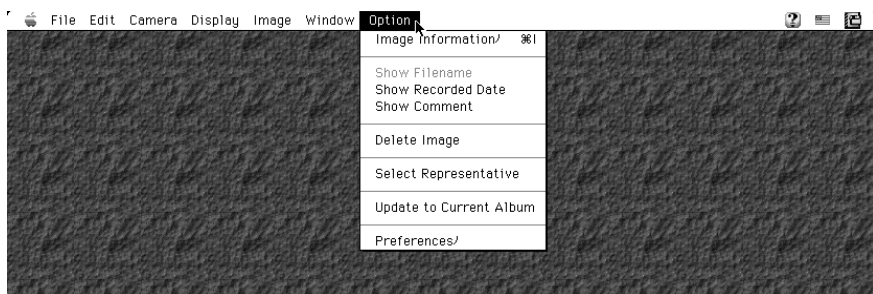


Image Information	Displays the image information window of the currently displayed image.
Show Filename	Displays the file name for each image of the image list window.
Show Recorded Date	Displays the date recorded by the Digital Still Camera for each image of the image list window.
Show Comment	Displays the comment for each image of the image list window.
Delete Image	Delete the image(s) selected in the image list window.
Select Representative	Register the representative image of an album.
Update to Current Album	Displays the updated image list. Select this command after you turn off the Digital Still Camera, record the images and then turn it on.
Preferences	Displays the window to set the software to decompress the camera images, select the image transfer method, and customize some menu items.

Keyboard shortcuts

The key descriptions next to the file menu stand for keyboard shortcuts.

Using the tool bar

The tool bar shortcuts to frequently used menu items.

When an image list is displayed



FIRST	Go to First Page: Displays the first page.
-1	Go to Previous Page: Displays the previous page.
+1	Go to Next Page: Displays the next page.
LAST	Go to Last Page: Displays the last page.
FILENAME	Show Filename: Displays the file name for each image of the image list window.
DATE	Go to Recorded Date: Displays the recorded date for each image of the image list window.
COMMENT	Show Comment: Displays the comment for each image of the image list window.

When an image is displayed



Image Information	Image Information: Displays an Image Information dialog box of the image currently displayed or selected in the image list window.
Zoom In	Zoom In: Zooms in an opened image.*
Zoom Out	Zoom Out: Zooms out an opened image.*
Rotate 90	Rotate Clockwise 90 degrees: Rotates an image 90 degrees in the clockwise direction.**
Rotate 90	Rotate Counter-Clockwise 90 degrees: Rotates an image 90 degrees in the counterclockwise direction.**
Rotate 180	Rotate 180 degrees: Rotates an image 180 degrees.**

* You can change the display size only; you cannot save an image zoomed in or out. To undo the zooming, select [Undo] in the Edit menu.

** To save the image rotated, select [Save] in the File menu. To undo the rotation, select [Undo] in the Edit menu.

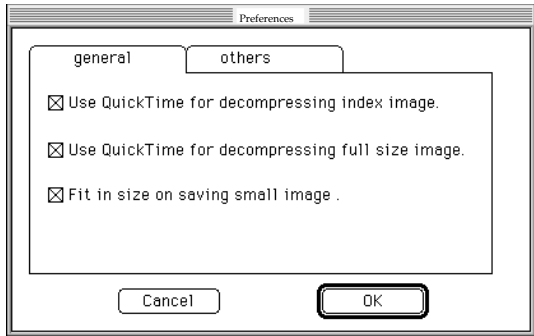
Setting the Preferences

Before you start using the “Sony Digital Still Camera Album Utility,” set the preferences to comply the software with the Sony Digital Still Camera DSC-F1. You can select the software to decompress a JPEG image, the way an image is transferred to the camera, and customise some menu items.

In case colors of the image captured are not displayed normally or a communication error occurs frequently, check the preferences.

- 1 Select [Preferences] in the Option menu.

The Preferences window appears.



- 2 Click the [general] tab to set the following:

- Use QuickTime for decompressing index image.

Check the check box when you use QuickTime to decompress JPEG images and to display the thumbnail on the image list window. Do not check when you use the original software.*

- Use QuickTime for decompressing full size image.

Check the check box when you use QuickTime to decompress a JPEG image and to display the image in full size on the monitor. Do not check when you use the original software.*

- Fit in size on saving small image.

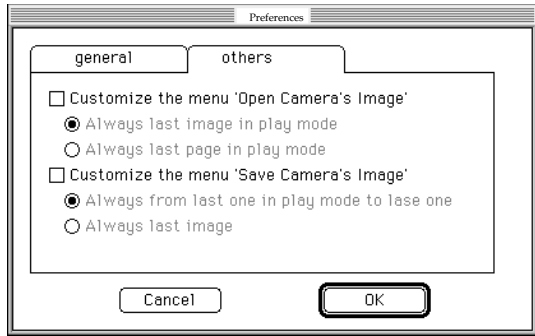
Check the check box when you fit a small image to 640 × 480 pixels to transfer it to the camera.

* QuickTime decompresses JPEG images more quickly than the original software does. In case colors of the image are not displayed normally, use the original software.

Customizing the menu

Assigning a special operational purpose to a menu is called “Customizing.” In the “Sony Digital Still Camera Album Utility,” you can customize the two menu items—“Open Camera’s Image” and “Save Camera’s Image” – by specializing the images to be opened and saved.

3 Click the [others] tab to set the following:



Customise the menu 'Open Camera's Image'

When this option is checked, the dialog box specifying the images to be opened with the [Open Camera's Image] menu will not appear. Select the images to be always opened among the two image options.

Customise the menu 'Save Camera's Image'

When this option is checked, the dialog box specifying the images to be saved with the [Save Camera's Image] menu will not appear. Select the images to be always saved among the two image options.

4 Click [OK] to close the preferences window.

Opening the camera images

To view images in the Digital Still Camera DSC-F1, open the camera's images. You can open the image directly by specifying its image number.

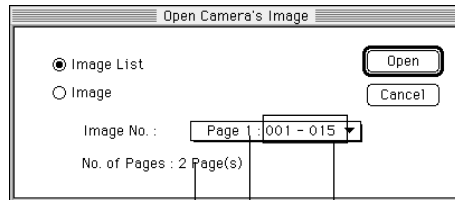
Before you start

Make sure you have done the necessary preparations as described in pages 82 through 85.

Opening the image from the image list window

- 1 Select [Open Camera's Image] in the Camera menu.

The following window appears.



Total number of pages

Page number

Image numbers

- 2 Click [Image List] and click the down arrow button to select the page to be displayed in the pull-down page number list.

On the right of the page number, the image numbers contained in the page are displayed.

- 3 Click [Open].

The images on the selected page are transferred from the camera and displayed.

Note

If there is only one page stored, the pull-down list does not appear.

Switching the file name, recorded date and comment display of an image

Select either [Show Filename], [Show Recorded date] or [Show Comment] in the Option menu. Or click the corresponding icon on the tool bar. (You can change the comments.)

Displaying other thumbnails

When hidden pages exist, select [Go to First Page], [Go to Previous Page], [Go to Next Page] or [Go to Last Page] in the Window menu. Or click the corresponding icon on the tool bar.



Image number

Comment, file name, or date display

If image is protected from accidental erasure and edition, the protect icon (🔒) is attached here.

- 4 Click the image(s) you want to open (the selected image frame becomes yellow) and select [Open Selected Image] in the File menu. Or, double-click the image.

The selected images are displayed in full size.



continued

Opening the camera images

How to select and cancel images in the image list window

❑ Selecting an image

Click the desired thumbnail of the image list window; the image is selected. Click another thumbnail and that image is selected instead of the previous image. To cancel the selection, click somewhere in the background without an thumbnail.

❑ Selecting multiple images

To select multiple images: Press and hold down the Shift key as you click the desired images.

To select all the images in the image list window: Select [Select All] in the Edit menu.

To cancel the selection: Press and hold down the Shift key as you click the selected images. The selection is canceled. To cancel the selection of all the images, select [Select None] in the Edit menu.

To open all the selected images: While pressing the Shift key, double-click one of the selected images. Or select [Open Selected Image] in the File menu.

Closing an album list, image list window or image

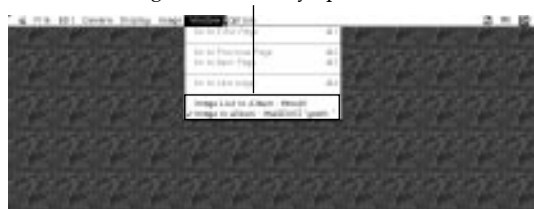
Select [Close] in the File menu or click the close button. The selected window is closed.

Switching the active window

You can switch the active window using the following methods:

- Click a part of the desired window.
- Click the desired file listed in the Window menu.

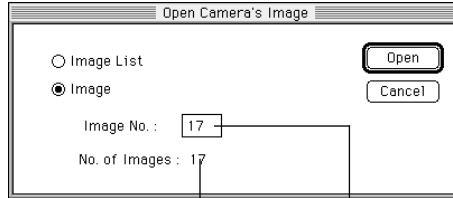
The image files currently opened.



Opening the image directly

- 1 Select [Open Camera's Image] in the Camera menu.

The following dialog box appears.



The total number of images
The image currently displayed on the camera

- 2 Click [Image] and input the image number which you want to open in the [Image No.] box.
- 3 Click [Open].

The selected images are displayed in full size.



Closing an album list, image list or image

Select [Close] in the File menu or click the close button. The selected window is closed.

Saving the camera images in album

The order of the images to be saved

The images are saved in the alphanumerical order of the file names:

- When the file name or recorded date is displayed underneath each image, the images are automatically named (IMAGE001, IMAGE002...) and saved in the same order as in the camera.
- When the comment is displayed, the comment of each image becomes its file name and the images are stored in the alphanumerical order of the comments.

You can change the order of the images later (page 114).

Notes

- You can select all the images of all the pages without regard to the page being displayed.
- For how to select multiple images, see page 96.

To quickly handle and process camera images on your PC, save the selected camera images in the CAMS file type in album of the hard disk with or without opening them.

Opening and saving the camera images

- 1 Follow the steps 1 through 3 of “Opening the camera images” (page 94) to display the image list window of the camera.



- 2 Click the thumbnails of the desired images. To save all the images, select [Select All] in the Edit menu.

The frame of the selected image is highlighted in yellow.



Saving in a different drive

Click [Desktop] to display the available drives in the list, from which you can select the desired drive.

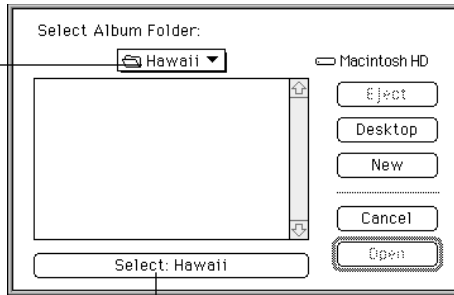
Creating a new album folder

Click [New]. The dialog to define a new album folder name appears. Type the new folder name and click [Create].

Note

When the comment is displayed in the image list, the comment of each image becomes the file name and the images are copied and placed in the hard disk according to the alphanumerical order of their file names.

- 3 Select [Save in Album] in the File menu.
The following window appears.



The destination folder where the camera images are to be saved.

When you click [New], a new folder is created under this folder.

- 4 Select the destination album folder and click [Select].
The selected camera images are saved in the destination album folder.

Stopping saving midway

Press the **⌘** and **⏏** keys together.

continued

Saving the camera images in album

Note

When the image list or images of the camera are displayed, close them before selecting [Save in Album].

Saving in a different drive

Click [Desktop] to display the available drives in the list, from which you can select the desired drive.

Creating a new album folder

Click [New]. The dialog to define a new album folder name appears. Type the new folder name and click [Create].

Saving all the camera images without opening them

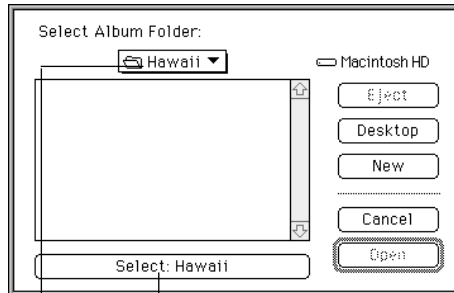
- 1 Select [Save in Album] in the Camera menu.

The following window appears.



- 2 Select [All Images] and click [OK].

The following window appears.



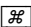

The destination folder where the camera images are to be saved.

When you click [New], a new folder is created in this folder.

- 3 Select the destination album folder and click [Select].

The selected camera images are saved in the destination album folder with a file name "IMAGE***" (***: serial number).

Stopping saving midway

Press the  and  keys together.

Note

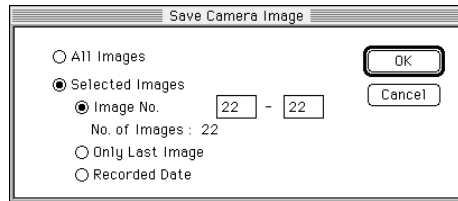
When the image list or images of the camera are displayed, close them before selecting [Save in Album].

Saving the selected camera images without opening them

- 1 Select [Save in Album] in the Camera menu.
The [Save Camera Image] window appears.
- 2 Click [Selected Images] and select one of the three options to specify the images to be saved.

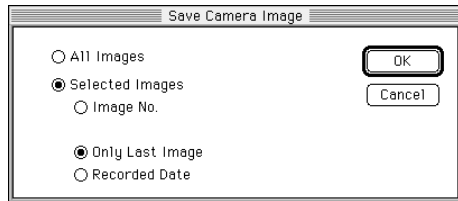
Image No.

Input the image numbers of the first and last images to be saved. All the images between the specified image numbers are saved.



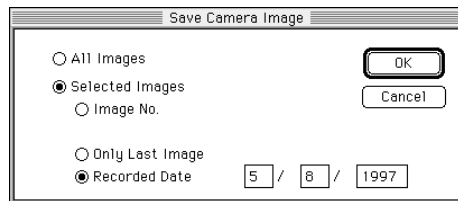
Only Last Image

The image recorded most recently is saved.



Recorded Date

Input the date (day/month/year). All the images recorded on the specified date are saved.

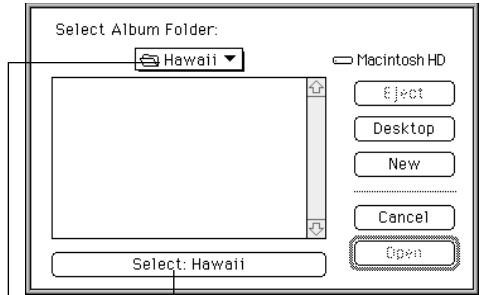


continued

Saving the camera images in album

3 Click [OK].

The following window appears.



The destination folder where the camera images are to be saved.

When you click [New], a new folder is created under this folder.

4 Select the destination album folder and click [Select].

The selected camera images are saved in the destination album folder with a file name "IMAGE***" (***: serial number).

Stopping saving midway

Press the **⌘** and **⏏** keys together.

Saving in a different drive

Click [Desktop] to display the available drives in the list, from which you can select the desired drive.

Creating a new album folder

Click [New]. The dialog to define a new album folder name appears. Type the new folder name and click [Create].

Saving the camera images as another file type

To quickly handle and process camera images on your PC, save the selected camera images as standard file type—PICT or JPEG—with or without opening them.

Selecting the file type

PICT	The image format supported generally by Macintosh. Most of the Macintosh image-editing applications support this type.
JPEG	Stands for the group named “Joint Photographic Experts Group,” who standardized the compression system of the still image. The image is compressed in a small data size, but the original image cannot be perfectly reproduced.

The order of the images to be saved

The images are saved in the alphanumerical order of the file names:

- When the file name or recorded date is displayed underneath each image, the images are automatically named (IMAGE001, IMAGE002...) and saved in the same order as in the camera.
- When the comment is displayed, the comment of each image becomes its file name and the images are stored in the alphanumerical order of the comments.

You can change the order of the images later (page 114).

Notes

- You can select all the images of all the pages without regard to the page being displayed.
- For how to select multiple images, see page 96.

Opening and saving the camera images

- 1 Follow the steps 1 through 3 of “Opening the camera images” (page 94) to display the image list window of the camera.



- 2 Click the thumbnails of the desired images. To save all the images, select [Select All] in the Edit menu.

The frame of the selected image is highlighted in yellow.

continued

Saving the camera images as another file type

Saving in a different drive

Click [Desktop] to display the available drives in the list, from which you can select the desired drive.

Creating a new album folder

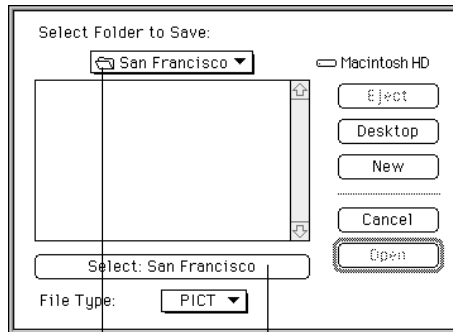
Click [New]. The dialog to define a new album folder name appears. Type the new folder name and click [Create].

Selecting the file type

Click the down arrow button next to File Type and select the desired file type from the pull-down list.

3 Select [Save as File] in the File menu.

The following window appears.



The destination folder where the camera images are to be saved.

When you click [New], a new folder is created in this folder.

4 Select the destination folder and file type in which the images are to be saved and click [Select].

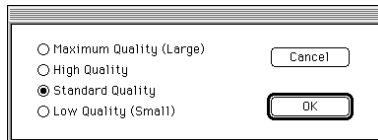
The selected camera images are saved in the destination album folder as a specified file type with a name "IMAGE***" (***: serial number).

Stopping saving midway

Press the **⌘** and **⏏** keys together.

Saving in JPEG file type

When you select [JPEG] file type, the window to define the image quality (compression ratio) appears.



Usually, the higher image quality you select, the larger file size with the lower compression ratio you get. Select the image quality option and click [OK].

Note

When the image list or images of the camera are displayed, close them before selecting [Save as File].

Saving in a different drive

Click [Desktop] to display the available drives in the list, from which you can select the desired drive.

Creating a new album folder

Click [New]. The dialog to define a new album folder name appears. Type the new folder name and click [Create].

Selecting the file type

Click the down arrow button next to File Type and select the desired file type from the pull-down list.

Saving all the camera images without opening them

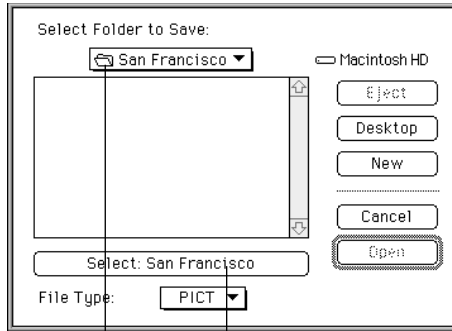
1 Select [Save as File] in the Camera menu.

The following window appears.



2 Select [All Images] and click [OK].

The following window appears.



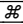

The destination folder where the camera images are to be saved.

When you click [New], a new folder is created in this folder.

3 Select the destination folder and file type in which the images are to be saved and click [Select].

The selected camera images are saved in the destination album folder as a specified file type with a name "IMAGE**" (**: serial number).

Stopping saving midway

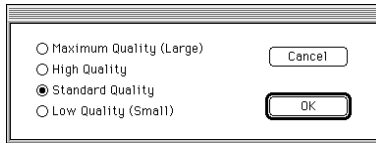
Press the  and  keys together.

continued

Saving the camera images as another file type

Saving in JPEG file type

When you select [JPEG] file type, the window to define the image quality (compression ratio) appears.



Usually, the higher image quality you select, the larger file size with the lower compression ratio you get. Select the image quality option and click [OK].

Note

When the image list or images of the camera are displayed, close them before selecting [Save as File].

Saving the selected camera images without opening them

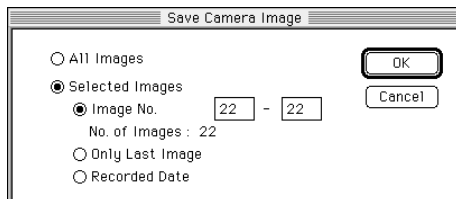
1 Select [Save as File] in the Camera menu .

The [Save Camera Image] window appears.

2 Click [Selected Images] and select one of the three options to specify the images to be saved.

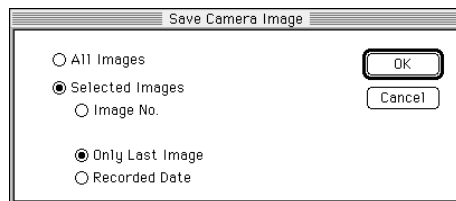
Image No.

Input the image numbers of the first and last images to be saved. All the images between the specified image numbers are saved.



Only Last Image

The image recorded most recently is saved.



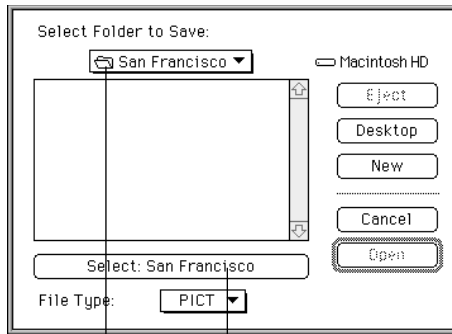
Recorded Date

Input the date (day/month/year). All the images recorded on the specified date are saved.



3 Click [OK].

The following window appears.



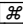

The destination folder where the camera images are to be saved.

When you click [New], a new folder is created in this folder.

4 Select the destination folder and file type in which the images are to be saved and click [Select].

The selected camera images are saved in the destination album folder as a specified file type with a name "IMAGE***" (***: serial number).

Stopping saving midway

Press the  and  keys together.

Saving in a different drive

Click [Desktop] to display the available drives in the list, from which you can select the desired drive.

Creating a new album folder

Click [New]. The dialog to define a new album folder name appears. Type the new folder name and click [Create].

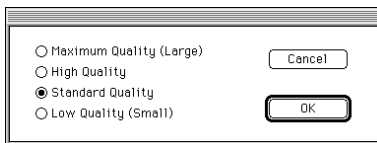
Selecting the file type

Click the down arrow button next to File Type and select the desired file type from the pull-down list.

Saving the camera images as another file type

Saving in JPEG file type

When you select [JPEG] file type, the window to define the image quality (compression ratio) appears.



Usually, the higher image quality you select, the larger file size with the lower compression ratio you get. Select the image quality option and click [OK].

Opening an album of the hard disk

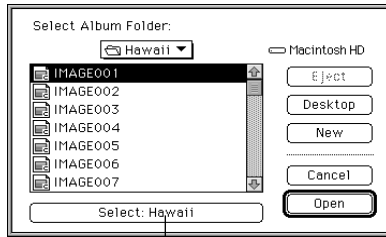
You can open the image from the album folder, stored from the Digital Still Camera onto the hard disk in the album format.

Changing the drive

Click [Desktop] to display the available drives in the list, from which you can select the desired drive.

- 1 Select [Open Album] in the File menu.

The following dialog box appears.



The selected album holder

Switching the file name, recorded date and comment display of an image

Select either [Show Filename], [Show Recorded date] or [Show Comment] in the Option menu. Or click the corresponding icon on the tool bar. (You can change the comments.)

- 2 Click the desired album folder and click [Select].

The image list of the selected album appears.



Comment, file name or recorded date

Image number

Serial number of the images store in the hard disk

- 3 Select the image(s) you want to open.

The frame of the selected image becomes yellow. For various ways to select images in the image list, refer to page 96.

continued

Opening an album of the hard disk

- 4 Select [Open Selected Image] in the File menu or double-click the image.

The selected images are displayed in full size.



Closing an image

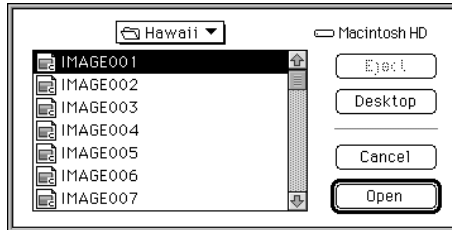
Click [Close] in the File menu.

Opening an image file directly

You can open an image stored in the hard disk by designating its file name. In addition to a file of an album format, you can open a PICT or JPEG file.

- 1 Select [Open Image File] in the File menu .

The following dialog box appears.



- 2 Select the Image file you want to open and click [Open].

The selected image is displayed in full size.



Closing an image

Click [Close] in the File menu.

Changing the drive

Click [Desktop] to display the available drives in the list, from which you can select the desired drive.

continued

Opening an image file directly

Saving in a different drive

Click [Desktop] to display the available drives in the list, from which you can select the desired drive.

Creating a new album folder

Click [New]. The dialog to define a new album folder name appears. Type the new folder name and click [Create].

Selecting the file type

Click the down arrow button next to File Type and select the desired file type from the pull-down list.

Notes

- When the destination album already has image files, the order of the image being copied depends on the existing file names.
- In case the file name of an image to be copied is the same as that of an existing image file, the dialog box asking to change the file name of the image to be copied appears.

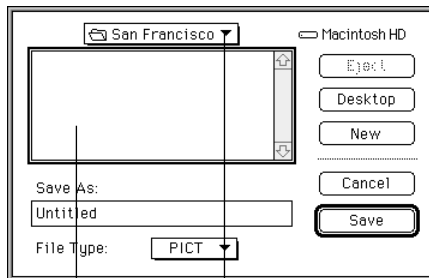
Saving the opened image in album

You can save the image on the hard disk in an album in the same way as the camera images. Refer to “Opening and saving the camera images” of the “Saving the camera images in album” on page 98.

Saving the opened image as another file format

1 Select [Save As] in the File menu.

The following dialog box appears.



The destination folder

Clicking the down arrow displays pull-down list of folders.

list of other folders.

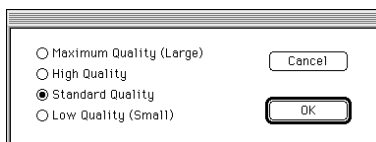
The images stored in the destination folder.

2 Select the destination folder in which the images are to be saved and file name. Click [OK].

The image is saved in the destination folder in the selected file format.

Saving in JPEG file type

When you select [JPEG] file type, the window to define the image quality (compression ratio) appears.



Usually, the higher image quality you select, the larger file size with the lower compression ratio you get. Select the image quality option and click [OK].

Changing the comment

When the date or file name is displayed

Select [Show Comment] in the Album menu or click **COMMENT** on the tool bar. The display is replaced with the comment.

Tips

- You can input up to 14 letters and/or numbers in a comment.
- When a full-size image is displayed, you can also input comments in the Image Information window. To display the window, select [Image Information] in the Option menu or click **i** on the tool bar.
- You can copy and paste the comment. After inputting the comment, select [Copy]. Then click the destination comment box and select [Paste] in the Edit menu.

You can change the comment of images.

- 1 Display the image list window of a camera or hard disk.

See “Opening the camera images” (page 94) or “Opening an album of the hard disk” (page 109) for details.

- 2 Click the comment box of the image whose comment you want to change.

The comment box is highlighted.



Comment box

- 3 Type the comment in the comment box.
- 4 Press the enter or return key.

The comment is changed.



Changed comment

Sorting the images

How the file name of each image is named

When the camera images are copied onto the hard disk, each image is named as follows:

- When the file name or recorded date is displayed underneath each image in the image list, the images are automatically named (IMAGE001, IMAGE002...) according to the order stored in the camera.
- When the comment is displayed, the comment of each image becomes its file name and the images are stored in the alphanumeric order of the comments.

Tips for inputting a comment as a file name


You can input up to 14 numbers and letters in a comment. To manage the image files, we suggest you mix the letters and numbers.

For example, use letters to divide the images into groups and use numbers to sort them within each group as follows:

Children001
Children002
Children003...
Sea001
Sea002
Sea003...
Sky001
Sky002
Sky003...

The images in album of the hard disk are positioned according to the alphanumeric order of their file names. You can rename and sort them using the following two methods:

Sorting the images by renaming and copying to a new album

- 1 Display the image list on the hard disk.
See “Opening an album of the hard disk” (page 109) for details.
- 2 Select [Show Comment] in the Option menu or click  on the tool bar.
- 3 Input comments (page 113).
The comment for each image will become its file name when it is copied to an album. Input a comment so that the image will be placed in the desired position when sorted first in the numerical order and then in the alphabetical order.
- 4 Select [Select All] in the Edit menu.
All the images are selected.
- 5 Select [Save in Album] in the File menu.
The [Select Album Folder] window appears.
- 6 Click [New], define a folder name, and then click [Create].
A new album folder is created.
- 7 Click [Select].
All the images are copied to the new album and are sorted according to the file name.

Renaming the files in the finder

You can also change names of the image files in the Macintosh finder. Click the file name and type a new file name so that the file is placed in the desired position in the album.

Copying an image to another album

Tip

You can use the File menu to copy the selected image(s). In step 3, select [Save in Album] or [Save as File] in the File menu. For the details, refer to "Saving the camera images in album" (page 98) or "Saving the camera images as another file type" (page 103).

Note

The position where the image is copied depends on its file name.

You can copy an image of an album to another album.

- 1 Display the image list of the camera or hard disk which includes the image to be copied and then the image list to which you want to copy the image.

See "Opening the camera images" (page 94) or "Opening an album of the hard disk" (page 109) for details.


- 2 Select the image to be copied.

To copy multiple images, press and hold down the Shift key as you click the desired images.

- 3 Drag the selected image.



Dragging pointer

- 4 Move the dragging pointer  to the album to which you want to copy the image then drop the image.

The image is copied to the destination album.

Copying in the finder

You can also copy images or albums in the Macintosh finder. Press and hold down the option key and drag them to the destination folder.

Deleting images

Note

When deleting an image, double-check that it is the right image. Once deleted, the image is lost forever.

You can delete images in an album.

- 1** Display the image list of a camera or hard disk which includes the image(s) to be deleted.
See “Opening the camera images” (page 94) or “Opening an album of the hard disk” (page 109) for details.
- 2** Select the image(s) to be deleted in the image list.
The frame of the selected image becomes yellow.
To delete multiple images, press and hold down the Shift key as you click the desired images.



Selected image

- 3** Select [Delete Image] in the Option menu.
The confirmation window appears.
- 4** Click [OK].
The images are deleted.

Deleting in the finder

You can also delete images or albums by dragging them to the trash in the Macintosh finder.

Note

When you delete images or albums in the finder, the protected images are also deleted.

Printing images

Note

Before you start printing, the proper printer driver should be installed in the hard disk.

You can print a full-sized image. The explanations here are based on the case when the Sony Digital Color Printer DPP-M55 is used. When using a different printer, refer to the manual of your printer.

- 1 Turn on the power of the printer and select the printer with the Chooser.
- 2 Display the full-sized image to be printed.
See "Opening the camera images" (page 94) or "Opening an album of the hard disk" (page 109) for details.
- 3 Select [Print Setup] in the File menu.

The following window appears. Set each item according to your printer.



(*The window is an example. It differs depending on the printer selected with the Chooser.)

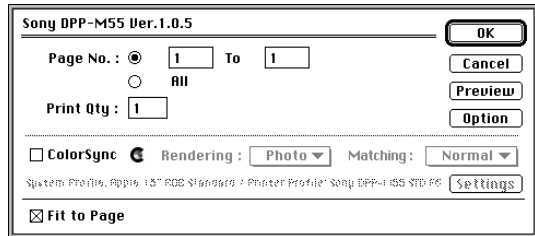
Orientation	Select the orientation of the paper when printed.
Enlarge/Reduce	When you want to print an image enlarged or reduced, input the factor in percentage.

- 4 Click [OK].

Printing images

5 Select [Print] in the File menu.

The following window appears.



(*The window is an example. It differs depending on the printer selected with the Chooser.)

6 Set the necessary items for printing.

Page No.	Specify the ranges of pages to be printed. Input the first and the last pages to be printed. To print all the pages, select [All].
Print Qty	Specify the number of copies to be printed.
Fit to page	Check this option when you want to print an image to best fit in the paper size selected in the [Print Setup] window.
Preview	Check this option to display the thumbnail of the images to be printed.
Option	Check this option when you want to set in more details for the printer's specifications.

7 Click [OK].

Printing starts up.


Changing the image display size

You can enlarge (zoom in) and reduce (zoom out) an image displayed on the monitor.

Display the full-sized image of a camera or hard disk which you want to change the display size. See “Opening the camera images” (page 94) or “Opening an album of the hard disk” (page 109) for details.




Enlarging an image

Select [Zoom In] in the Display menu or click  in the tool bar. The display size of the image is enlarged.



Reducing an image

Select [Zoom Out] in the Display menu or click  in the tool bar. The display size of the image is reduced.



Note

When you zoom in or out an image, only the image displayed on the monitor is changed. You cannot save the image zoomed in or out.

Undoing the zooming

Select [Undo] in the Edit menu.

Rotating an image

You can rotate an image, which is useful to view an image recorded with the camera oriented side ways.

Display the full-sized image of a camera or hard disk which you want to change the angle. See "Opening the camera images" (page 94) or "Opening an album of the hard disk" (page 109) for details.




Note

When you rotate an image, only the image displayed on the monitor is rotated but the original image does not change. To save the original image rotated, select [Save File] in the File menu.

Undoing the rotation


Select [Undo] in the Edit menu.

Rotating an image in clockwise direction

Select [Rotate Clockwise 90 degrees] in the Image menu or click  in the tool bar. Each time you select the menu or tool, the image is rotated 90 degrees in the clockwise direction.




Rotating an image in counterclockwise direction

Select [Rotate Counterclockwise 90 degrees] in the Image menu or click  in the tool bar. Each time you select the menu or tool, the image is rotated 90 degrees in the counterclockwise direction.



Rotation an image 180 degrees

Select [Rotate 180 degrees] in the Image menu or click  in the tool bar. Each time you select the menu or tool, the image is rotated 180 degrees.




Reviewing the image information

Note

You can display the image information for an album image only. For a PICT or JPEG image file, you cannot display the information.

You can review settings when the image is recorded in the Image Information window. You can also set the protection, revise the edited date, or input comments.

- 1 Display the full-sized image whose information you want to review.
See “Opening the camera images” (page 94) or “Opening an album of the hard disk” (page 109) for details.
- 2 Select [Image Information] in the Option menu or click  in the tool bar.

The following window appears.



- 3 Review or revise the settings:

Protect	Check to set the protection. Do not check to release the protection to edit or delete the image.
Image Quality*	The image quality mode (compression ratio) when the image is recorded: FINE/STANDARD/SNAPSHOT
Recorded date*	The date when the image is recorded.
Edited date	You can manually input the date when the image is transferred or edited.
Shutter speed*	The shutter speed when the image is recorded.
Flash *	The flash is used (ON) or not used (OFF) when the image is recorded.
Comment	You can input a comment in the text box.

* You cannot change from your Macintosh.

- 4 Click [OK] to close the window.

Transferring an image to the camera

Note

For the image quality, refer to the instruction manual of the Digital Still Camera DSC-F1.

You can transfer a PICT, JPEG or an album-type (CAM5) image file to the camera.

- 1 Display the full-sized image to be transfer to the camera.
- 2 Select [Save to Camera] in the Camera menu.
The window defining the image quality (FINE, STANDARD, and SNAPSHOT) appears.
- 3 Select the image quality and click [OK].
The image is compressed in the selected image quality and transferred to the camera.

Transferring a large image

Since the image being stored in the camera is limited to 640×480 pixels, a larger image is reduced automatically and transferred to the camera. To cut out part of the image without reducing, select [Display Frame 640×480] (in landscape) or [Display Frame 480×640] (in portrait) in the Image menu. Move the edit frame to crop the area to be transferred and the follow the steps 2 and 3.



Edit frame

Transferring a small image

When the option "Fit in size on saving small image" is checked in the Preferences window, a small image will be enlarged to 640×480 pixels and transferred to the camera. When the option is not checked, a small image will be transferred as it is.

Transferring camera images to your application

You can transfer Digital Still Camera images directly to an applications which support the Adobe PhotoShop Plug-in.

Before you start

- Make sure you have done the necessary preparations as described in pages 82 through 85.
- Set the application memory as large as possible. (The minimum Memory Requirements: the Suggested size plus 3000KB to the Preferred size)

- 1 Start up an application.
- 2 Select [Acquire] and then [Sony Digital Still Camera] in the [File] menu. (Menu names differ depending on the application.)

After your Macintosh accesses the Digital Still Camera, the image list window appears.



continued

Transferring camera images to your application

Using the tool bar

FIRST	Displays the first page.
-1 ←	Displays the previous page.
→ +1	Displays the next page.
LAST	Displays the last page.
TITLE	Displays the title of the image.
DATE	Displays the recorded or imported date.
Transfer	Transfers the selected image(s) to an application.
Close	Closes the window.

3 Select the image to be transferred.

Depending on the application, you can transfer multiple images at a time; When you transfer multiple images, press and hold down the shift key as you click the desired images.

4 Click or double-click one of the selected images.

The selected image is or images are transferred to the application.



To transfer other images

Repeat steps 2 and 4.

Note

Depending on the application, the number of images which can be transferred from the camera via Plug-in differs.

Troubleshooting

Note

The SERIAL menu defines the serial speed via the connecting cable.

After trying the following remedies, if the problem persists, please consult "Sony Customer Technical Support." Also refer to the operating instructions of the Digital Still Camera DSC-F1.

An error message appears or an error occurs.

- The connecting cable between your Macintosh and the Digital Still Camera is not fitted properly.
 - Connect the cable properly. (page 84)
- The power of the Digital Still Camera is not turned on.
 - Set the POWER/Function dial of the Digital Still Camera to "PLAY." (page 85)
- The WIRELESS and SERIAL menu settings of the Digital Still Camera is not proper.
 - Select "OFF" in the WIRELESS menu and "38400" in the SERIAL menu of the Digital Still Camera. (page 85)
- The same modem or printer port may be used by another communication software.
 - Check which port the communication software uses and assign another port for either the "Sony Digital Still Camera Album Utility" or the communication software.
- The Apple Talk is set to ON.
 - Turn off the Apple Talk to use the printer port.
- Another communication software quits without releasing the model or printer port and the port becomes disabled.
 - Restart the Macintosh.
- There may be some problem with the application, Macintosh or Digital Still Camera.
 - Quit the application and turn off your Macintosh and the Digital Still Camera. And turn on the Macintosh and the Camera. Then start the application to see if the application works properly.
- The memory space allocated to the "Sony Digital Still Camera Album Utility" is too small.
 - Allocate a larger memory space to the "Sony Digital Still Camera Album Utility."

continued

The Plug-in does not work properly.

- The memory space allocated to the Plug-in is too small.
 - Allocate a larger memory space to the application.
- The Plug-in may be incompatible with some of the extensions.
 - Start up your Macintosh, holding down the Shift key to disable all extensions. Check that the application works properly with System only. Then restart your Macintosh, holding down the Space bar to display the Extensions Manager control panel. Turn off or on conflicted extensions in the panel to verify which is incompatible with the Plug-in.

Cannot open the camera images.

- You cannot access the Digital Still Camera from two or more applications at a time.
 - Quit the other applications once and start the "Sony Digital Still Camera Album Utility." Then try to access the camera.

Cannot select multiple images in an image list.

- The caps lock key is depressed.
 - Release the caps lock key.

Cannot display part of thumbnail.

- Click part of the thumbnail.

Index

A, B

Album format 79

C

Comment 113, 121

Connecting the Digital
Still Camera 84

Copying an image 115

Customizing the menu
92

D

Deleting images 116

DIGITAL I/O port 84

Displaying other
thumbnails 95

E

Edit frame 122

Enlarging an image 119

F, G, H

Features 78

File type 103

I

Image filing system 79

Image information 121

Installing the software
82

J, K, L

JPEG 103

M, N

Making a new album
folder 99

Menus 87

Camera menu 88

Display menu 89

Edit menu 88

File menu 87

Image menu 89

Option menu 90

Window menu 89

O

Opening

an album of the hard
disk 109

an image file directly
111

the camera image
directly 97

the camera image list
94

Operation flow chart 80

P

PICT 103

Plug-in 78, 123

Preferences 92

Printing images 117

Protect setting 121

Q

QuickTime 92

R

Reducing an image 119

Rotating an image 120

S

Saving

Opening and saving
the camera images
98, 103

Saving the camera
images without
opening them
100, 105

Saving the camera
images as another
file type 103

Saving the camera
images in album
98

Saving the opened
image as another
file format 112

Selecting images 96

SERIAL menu 85

Setting up the Digital
Still Camera 84, 85

Sorting the images 114

Starting the software
86

System requirements
81

T

The order of the images
to be saved 98, 103

Thumbnail 79

Transferring

an image to the
camera 122

a camera images to
Plug-in application
123

U, V

Using the tool bar
91, 124

W, X, Y, Z

WIRELESS 85

