

WALKMAN

Radio Cassette Player
WM-FX221/FX227/FX229/FX421/
FX421V/FX423/FX425

Operating Instructions

WALKMAN is a registered trademark of Sony Corporation.

Sony Corporation © 1995

Printed in Malaysia

The illustrations in this manual are for the FX425. The differences in appearance or operation between each models are described in the respective sections.

OWNER'S RECORD

The model number is located at the bottom and the serial number is located inside the cassette holder. Record these numbers in the spaces provided below. Refer to them whenever you call upon your Sony dealer regarding this product.

Model No. _____

Serial No. _____

For the customers in the U.S.A.

INFORMATION

This equipment has been tested and found to comply with the limits for a Class B digital device, pursuant to Part 15 of the FCC Rules. These limits are designed to provide reasonable protection against harmful interference in a residential installation. This equipment generates, uses, and can radiate radio frequency energy and, if not installed and used in accordance with the instructions, may cause harmful interference to radio communications. However, there is no guarantee that interference will not occur in a particular installation. If this equipment does cause harmful interference to radio or television reception, which can be determined by turning the equipment off and on, the user is encouraged to try to correct the interference by one or more of the following measures:

- Reorient or relocate the receiving antenna.
- Increase the separation between the equipment and receiver.
- Connect the equipment into an outlet on a circuit different from that to which the receiver is connected.
- Consult the dealer or an experienced radio/TV technician for help.

This device complies with Part 15 of the FCC Rules. Operation is subject to the following two conditions:

- (1) This device may not cause harmful interference, and
- (2) this device must accept any interference received, including interference that may cause undesired operation.

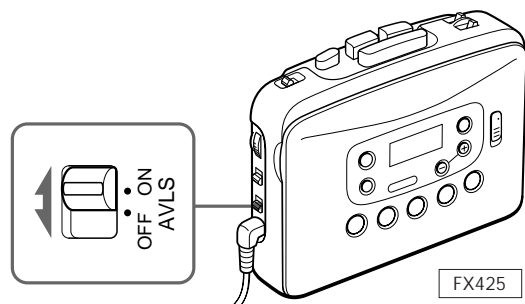
You are cautioned that any changes or modifications not expressly approved in this manual could void your authority to operate this equipment.

Featuring

AVLS (Automatic Volume Limiter System)

The AVLS switch allows you to limit the maximum volume of your Walkman personal stereo without degrading the sound quality.

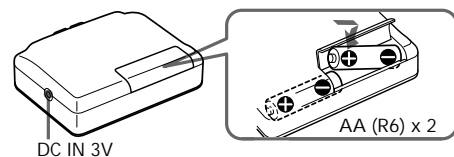
- When the AVLS switch is set to ON (around 85 dB), the volume will be kept at a moderate level without the degradation of the sound quality, even if you attempt to turn the volume up higher.
- When the AVLS switch is set to ON, the playback sound may be distorted or unstable according to the music (especially bass boosted part). If this happens, turn down the volume.
- When the AVLS switch is turned off, you will be able to enjoy the full volume capability of your Walkman personal stereo.



Getting Started

Using with Batteries

Insert two AA (R6) batteries in correct polarity.



Notes

- When you are not going to use your Walkman for a long time, remove the batteries to prevent damage from battery leakage and corrosion.
- When the batteries become weak, the sound will be unstable or can not be heard. In such a case, replace both batteries.
- Replace both batteries while the E indication comes on in the display, or all the memories will be canceled.
- Concerning the battery life, see "Specifications".

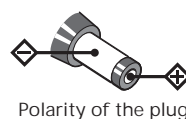
Using External Power Sources

You can connect the following external power sources through the DC IN 3 V jack located on the right side. (When you plug a cord into the DC IN 3 V jack, the internal batteries are automatically bypassed.)

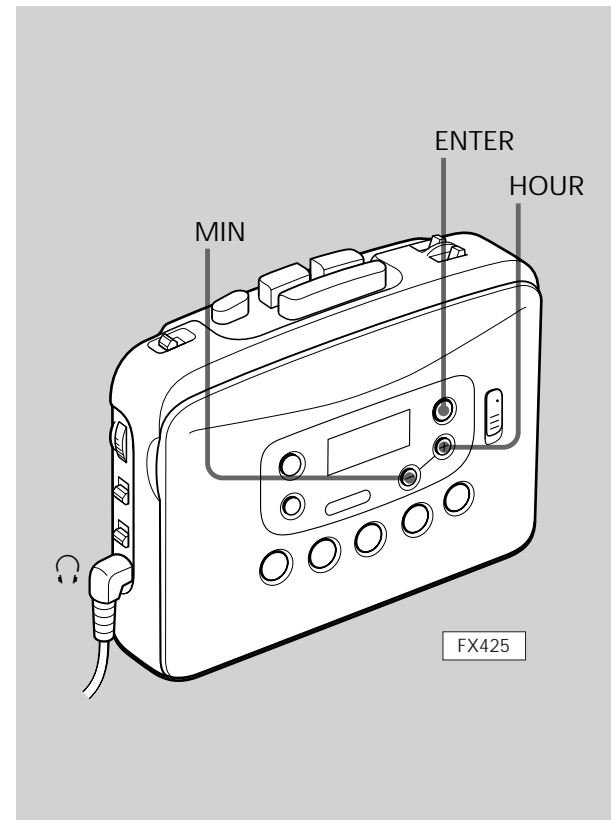
- House current using an AC-E30HG AC power adaptor

Note

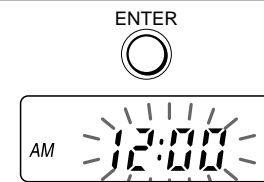
Use only the recommended AC-E30HG AC power adaptor (not supplied). Do not use any other AC power adaptor.



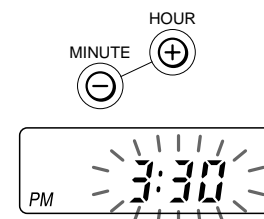
Setting the Clock



- 1 Press the ENTER button to enter the current time setting mode.



- 2 Set the time by using the HOUR/MINUTE buttons within ten seconds of flashing. To set the hour use the HOUR button and to set the minute use the MINUTE button.



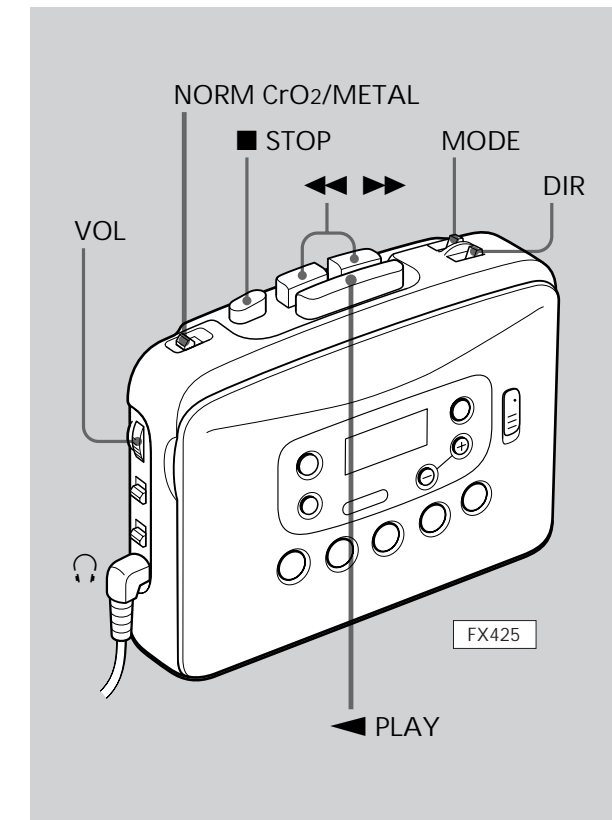
- 3 Press the ENTER button to return to the current time display.



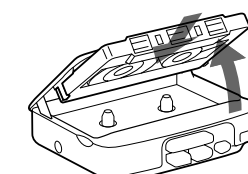
Notes

- The hour display does not advance even when the minute display returns to "00" after "59".
- The hour display is on a 12-hour cycle (U.S.A., Canada and Central and South America models). The hour display is on a 24-hour cycle (other models).

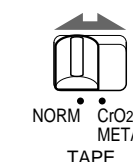
Playing Cassette



- 1 Insert a cassette.



- 2 Select the NORM or CrO₂/METAL mode to match the tape type.



- 3 Press the ◀ PLAY button.



Operating the Cassette Player

To wind the tape	Press ◀◀ or ▶▶.
To adjust the volume	Set the VOL control.
To stop	Press ■ STOP.
To change sides*	Set DIR to ◀ or ▶.
To play both sides once*	Set MODE to ↶.
To play both sides repeatedly*	Set MODE to ↷.

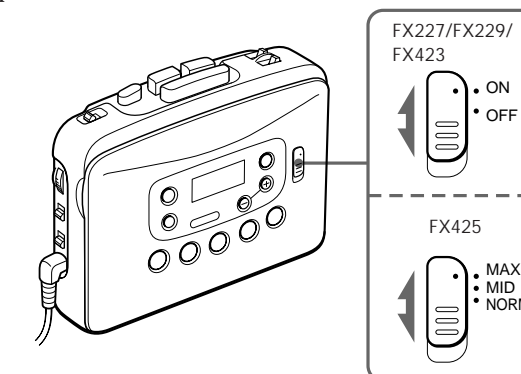
* FX421/FX421V/FX423/FX425 only

Notes on playing cassettes

- Do not use cassettes longer than 90 minutes except for long continuous playback.
- If the tape is playing but no sound comes out, the batteries may be weak. Replace all batteries with new ones.
- If your Walkman has not been used for a long time, run the Walkman for a few minutes before inserting a cassette.
- Do not open the cassette holder while the tape is running.

Using MEGA BASS (FX227/FX229/FX423/FX425)

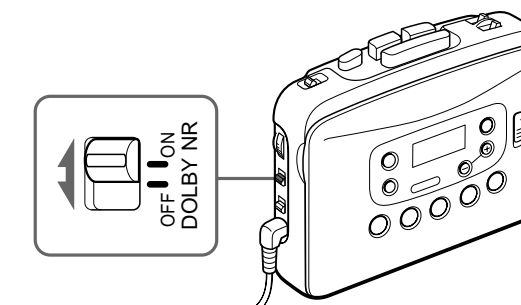
Set the MEGA BASS selector to ON to produce deep and powerful sound.



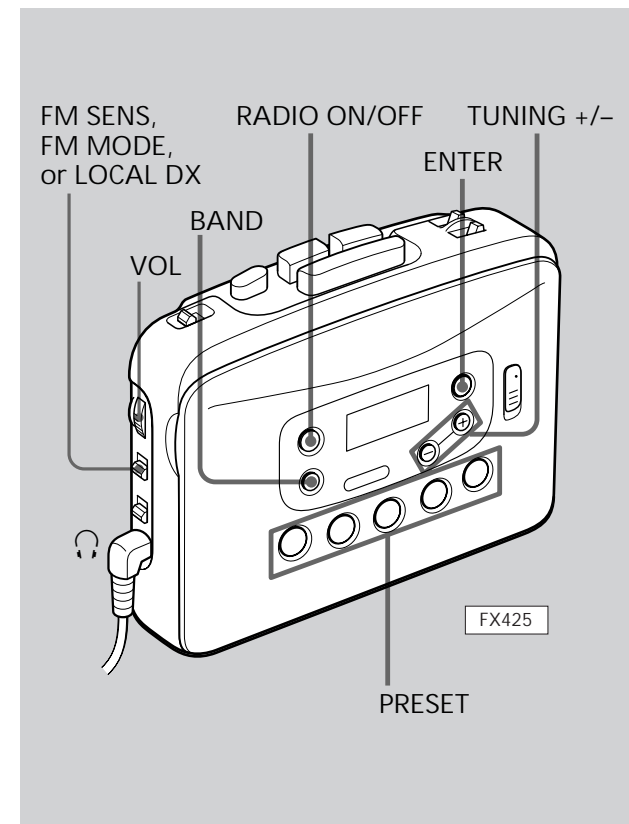
When using MEGA BASS If the AVLS switch is set to ON, the MEGA BASS effect is reduced.

Using DOLBY NR (FX425)

Set the DOLBY NR switch to ON to play Dolby NR processed tapes.



Listening to the Radio



Notes

- If you keep pressing the TUNING + or - button, the frequency digits go up or down quickly. And when you release, the frequency digits go up or down step by step. When the desired station is heard, press the TUNING + or - button again to stop the tuning.
- The ST (stereo) indication comes on in the display when receiving an FM stereo broadcast.
- If you press the ◀ PLAY, ◀◀ or ▶▶ button while listening to the radio, the tape operation begins.
- If you have inserted a cassette with a metallic shell or label, and interference in radio reception occurs, remove the cassette.

Presetting Stations

You can preset up to 20 radio stations, 5 for each FM1, FM2, FM3 and AM bands.

1 Press the RADIO ON/OFF button.



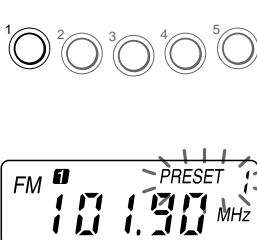
2 Tune in the desired station by using the BAND and TUNING +/- buttons.



3 Press the ENTER button to enter the presetting mode. The PRESET indication comes on and starts flashing.



4 Press one of the PRESET buttons 1 to 5 within ten seconds of flashing. The PRESET indication and the preset number flash.



5 Press the ENTER button within ten seconds of flashing. The PRESET indication and the preset number light.

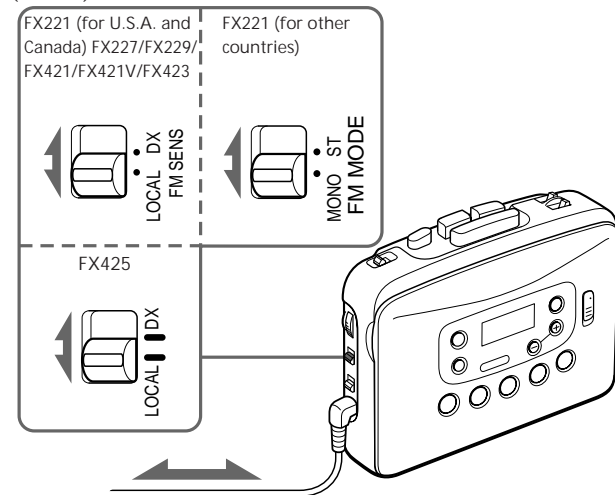


To recall the preset station Press the BAND button to select the band, and then press the corresponding preset button.

Improving Radio Reception

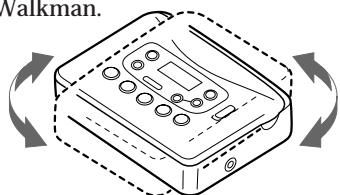
Improving FM reception

Extend the headphones cord or adjust the FM SENS (FX221 for U.S.A., Canada and Central and South America/FX227/FX229/FX421/FX421V/FX423), FM MODE (FX221 for other countries) or LOCAL/DX (FX425) switch.



Improving AM reception

Rotate the Walkman.



Listening to the Radio Abroad

The frequency range differs depending on the area. If you listen to the radio in an area of different frequency range, change the area indication in the display. To change it, press the ENTER button while the radio is turned on. Press and hold the BAND button until the area indication flashes. Then, press the BAND button again to change the area indications ("U": USA, Canada and Central and South America; "E": European and other countries). Press the ENTER button to set the frequency range.

Notes

- If you change the frequency range, all the preset stations in the memory will be canceled.
- For E area indication, the hour display is on a 24-hour cycle.

If the display shows incorrect information

When you use the Walkman for the first time or when you have left the Walkman without batteries for a long period of time, the display may show incorrect information or the preset stations may not be recalled correctly. If this happens, remove the batteries, and leave until the display goes off. Then insert the batteries and turn on again.

The memories of all the preset stations and the current time will be canceled.

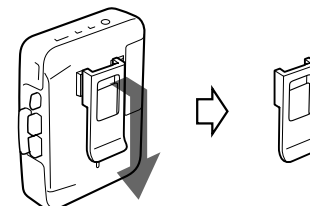
Reset these functions to the desired stations and time.

Using the Belt Clip

With the supplied belt clip, you can wear your Walkman on a belt for convenient use.

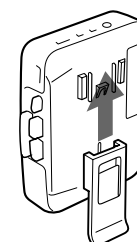
Removing the Belt Clip

Lift the tab slightly and push down with your finger to remove the belt clip from the Walkman.



Attaching the Belt Clip

Align the belt clip with the grooves on the back of the Walkman and slide the belt clip up until you hear a click, to firmly attach it to the Walkman.



Specifications

Radio Frequency

For U area indication:

- FM: 87.5 - 108 MHz (0.1 MHz step)
- AM: 530 - 1,710 kHz (10 kHz step)

For E area indication:

- FM: 87.5 - 108 MHz (0.05 MHz step)
- AM: 531 - 1,602 kHz (9 kHz step)

Power Requirements

- 3 V DC Batteries AA (R6) × 2
- External DC 3 V power sources

Battery Life

(approximate hours when using the batteries specified below)

Battery	Playback	Radio
Sony Alkaline LR6 (SG)	16 hours	33 hours
Sony R6P (SR)	4.5 hours	13 hours

Dimensions

116.5 x 86.3 x 34.6 mm (4 5/8 x 3 1/2 x 1 3/8 in.) (w/h/d) incl. projecting parts

Mass 210 g (7.5oz) incl. batteries

Supplied Accessories

- Stereo headphones (1)
- Belt clip (1)

Optional Accessories

- AC power adaptor AC-E30HG

Your dealer may not handle some of the optional accessories listed above. Please ask the dealer for detailed information.

Design and specifications are subject to change without notice.

Dolby noise reduction manufactured under license from Dolby Laboratories Licensing Corporation. "DOLBY" and the double-D symbol are trademarks of Dolby Laboratories Licensing Corporation.

Precautions

Notes on headphones

Concerning Road Safety

Do not use headphones while driving, cycling, or operating any motorized vehicle. It may create a traffic hazard and is illegal in many areas. It can also be potentially dangerous to play your headsets at high volume while walking, especially at pedestrian crossings. You should exercise extreme caution or discontinue use in potentially hazardous situations.

Preventing hearing damage

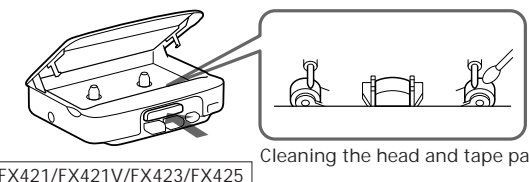
Do not use headphones at high volume. Hearing experts advise against continuous, loud and extended play. If you experience a ringing in your ears, reduce volume or discontinue use.

Caring for others

Keep the volume at a moderate level. This will allow you to hear outside sounds and to be considerate to the people around you.

Taking Care of Your Walkman

- Do not expose the Walkman to extreme temperatures, direct sunlight, moisture, sand, dust or mechanical shock. Never leave the Walkman in a car parked in the sun.
- Do not wind the headphones cord around the Walkman. The buttons may be kept pressed, causing unnecessary battery usage.
- Prolonged use may contaminate the tape head. If sound drop-out or excessive noise occurs, clean the head and tape path with alcohol.



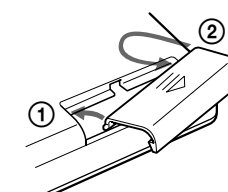
FX421/FX421V/FX423/FX425

Cleaning the head and tape path

- Clean the headphones plug periodically for optimum sound.
- Do not use alcohol, benzine or thinner to clean the case.

About the Battery Compartment Lid

If the battery compartment lid is detached by an accidental drop, excessive force etc., attach it as illustrated in the numbered order.



If you have any question or problem concerning your Walkman, please consult your nearest Sony dealer.

This warranty is valid only in the United States.

LIMITED WARRANTY

To adjust the volume	Set the VOL control.
To turn off	Press RADIO ON/OFF.