

GR-213U

English

QUICK GUIDE

GPS Receiver

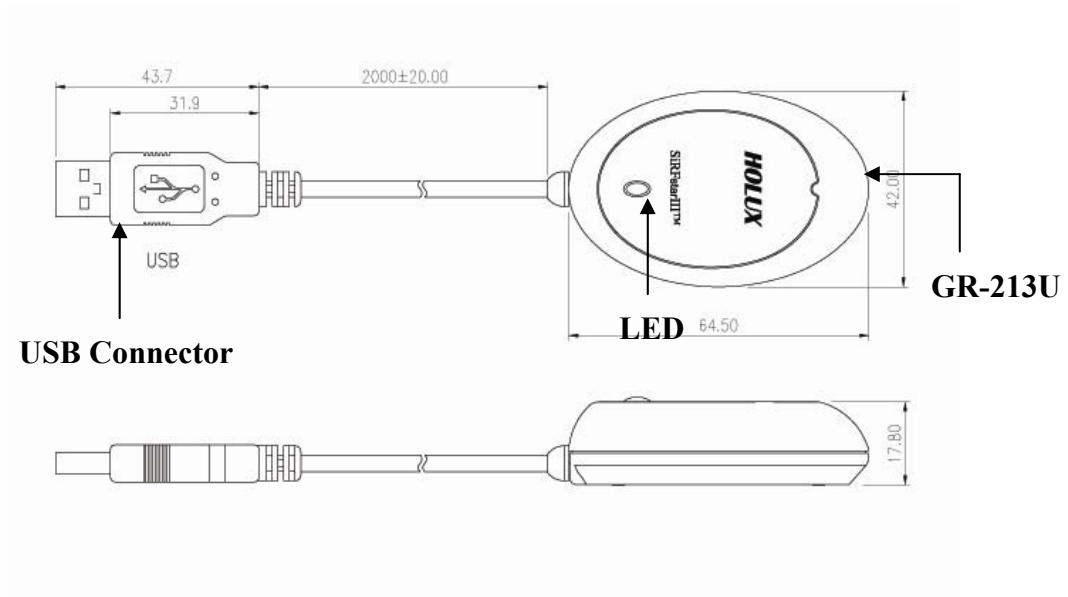


Packing List

Standard

- GPS Receiver x 1
- Tool CD x 1
- GR-213U Quick Guide x 1
- Warranty Card x 1

Unit Features



LED

COLOR	STATUS	DESCRIPTION
ORANGE	Light on	Acquiring Satellites
	Blinking	Position Fixed

Getting STARTED

Type	
OUTPUT Connector	POWER SUPPLY: USB DATA OUTPUT: USB
Installation	<ol style="list-style-type: none"> 1. Install USB driver in PC or Laptop first. 2. Connect device to USB port. 3. PC will designate comport for device.* <p>* Note:</p> <ol style="list-style-type: none"> 1. Please go to device manager "Com & Lpt port", to find out the "HOLUX GPS USB device (Com#)" 2. Use GPSViewer to test it.

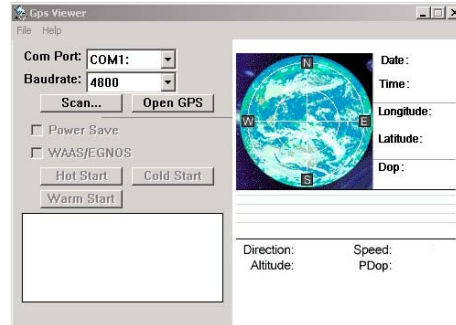
• GpsViewer (Testing tool)

(GPSViewer.exe is compatible with Windows OS)

Double click the GPSViewer.exe on your PC, the GPSViewer.exe program will install automatically.

2. Open GPSViewer

Double click GPSViewer button

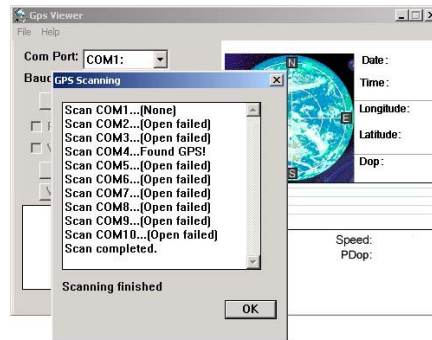


3. Set baud rate and Scan Com Port

Set Baudrate:4800

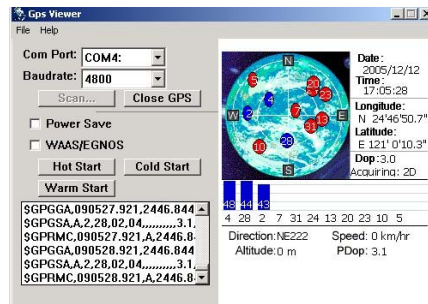
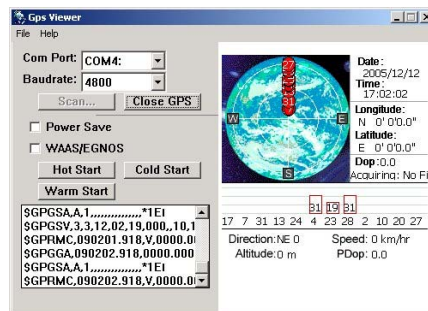
↓
Select Scan

Select 'Scan' button to scan the COM port used on your PC.



4. Found Com Port and Open GPS

Find GPS
↓
Select correct Com Port for GR-213U
↓
Open GPS
↓
GPS Status is displayed



- For further information, please read the user's manual in the supplied CD.

HOLUX

GR-213U

Germany

KURZBESCHREIBUNG

GPS EMPFÄNGER

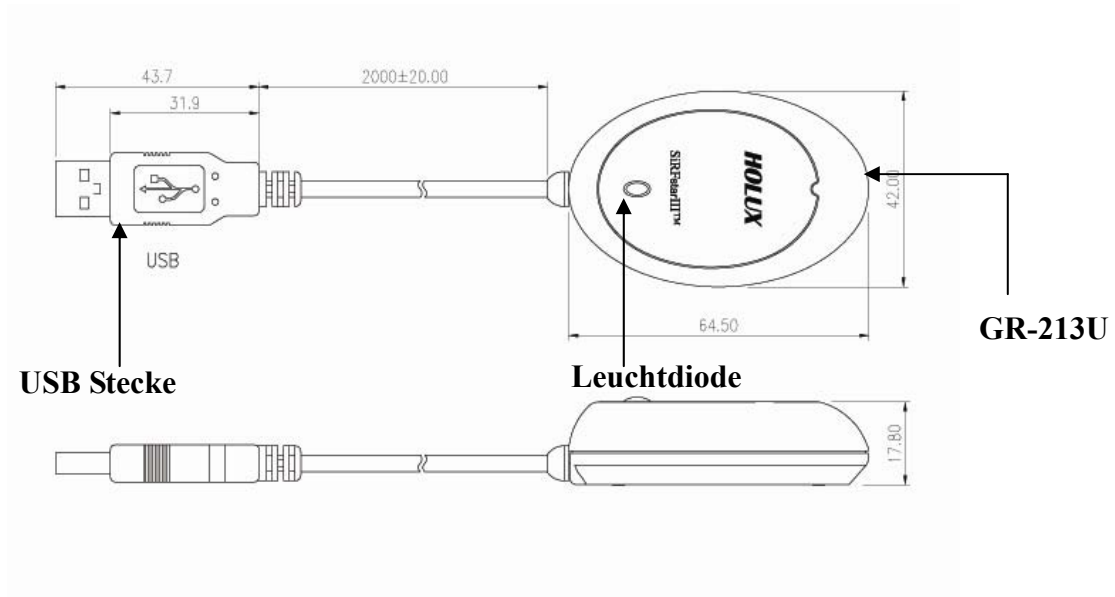


Inhaltsliste

Standard

- GPS Empfänger x 1
- Geräte CD x 1
- GR-213U Kurzbeschreibung x 1
- Garantiekarte x 1

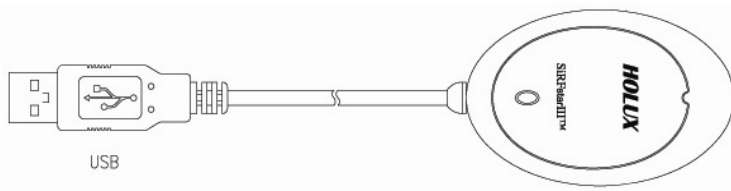
Gerätemerkmale



Leuchtdiode

FARBE	STATUS	BESCHREIBUNG
Orange	Licht an	Satellitensuche
	Blinklicht	Satellit gefunden

Inbetriebnahme

Type	
AUSGANG-STECKER	STROMVERSORGUNG: USB DATENAUSGANG: USB
Einrichten	<ol style="list-style-type: none"> 1. Installieren Sie zuerst den USB-Treiber auf dem PC oder Laptop. 2. Schließen Sie das Gerät an den USB-Anschluss an. 3. Der PC wird dem Gerät einen COM-Anschluss zuweisen.* <p>* Hinweis:</p> <ol style="list-style-type: none"> 1. Wechseln Sie im Geräte-Manager zu "COM & LPT-Anschluss" und prüfen Sie, ob das "HOLUX GPS USB-Gerät (Com#)" vorhanden ist 2. Testen Sie es mit GPSViewer.

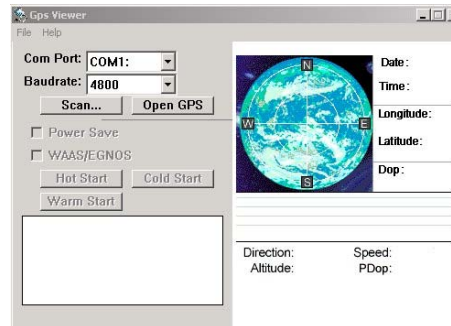
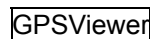
• GpsViewer (Überprüfungswerkzeug)

(GPSViewer.exe ist kompatibel mit Windows OS)

Doppelmausklick auf GPSViewer.exe an Ihrem PC, das GPSViewer.exe Programm wird automatisch installiert.

2. Öffnen GPSViewer

Doppelklicken Sie auf die Schaltfläche

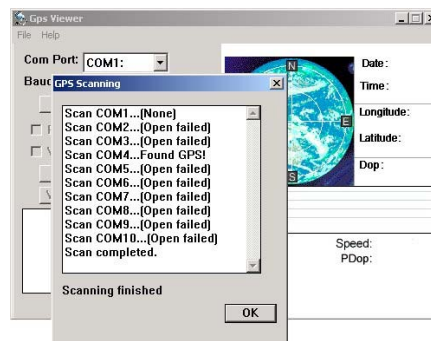


3. Einstellen der Baudrate und des Scan Com Steckplatzes

Einstellen **Baudrate:4800**

Auswahl **Scan**

Wählen Sie die Schaltfläche 'Scan', um nach dem COM-Port Ihres PCs zu suchen.



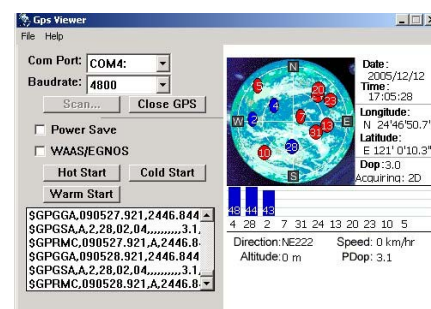
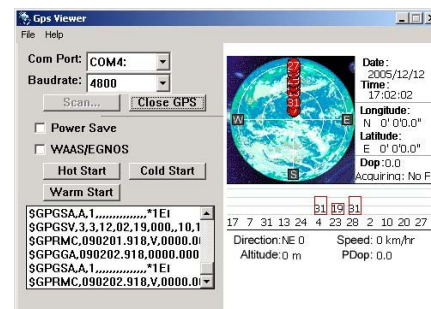
4. Finden des Com Steckplatz und öffnen GPS

Finden GPS

Auswahlkorrektur Com Steckplatz für GR-213U

Open GPS

Der GPS-Status wird angezeigt



Für weitere Informationen, lesen Sie bitte die Bedienanweisung in der mitgelieferten CD.

GR-213U

Italian

GUIDA RAPIDA

Ricevitore GPS

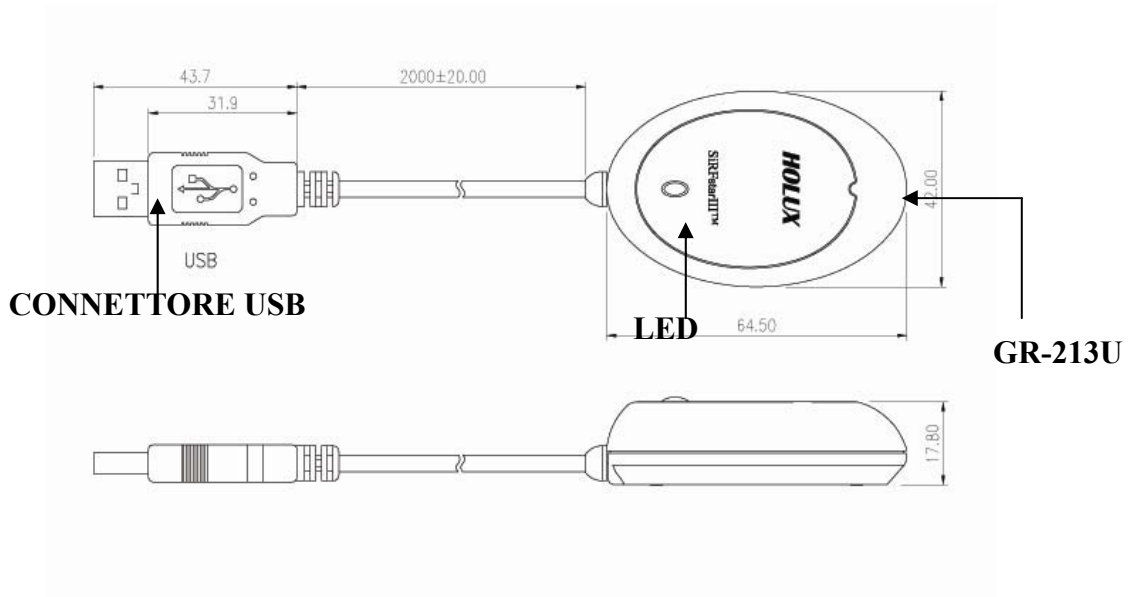


Contenuto della confezione

Standard

- Ricevitore GPS
- CD strumenti
- Guida rapida per GR-213U
- Scheda di garanzia

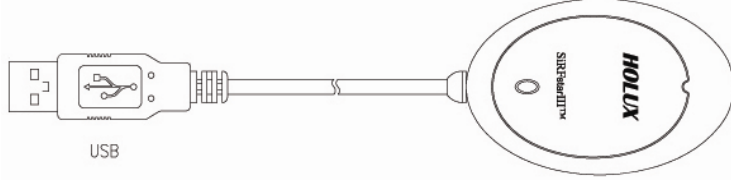
Caratteristiche



LED

COLORE	STATO	DESCRIZIONE
Arancione	Acceso	Acquisizione satellite
	Lampeggiante	Posizione individuata

Per INIZIARE

Tipo	
Connettore OUTPUT	ALIMENTAZIONE: USB OUTPUT DATI: USB
Installazione	<ol style="list-style-type: none"> 1. Per prima cosa installare il driver USB sul PC o Laptop. 2. Collegare il dispositivo alla porta USB. 3. Il PC designerà una porta COM per il dispositivo.* <p>* Nota:</p> <ol style="list-style-type: none"> 1. Andare alla gestione periferiche e controllare se alla voce "Porte COM e LPT" è presente "HOLUX GPS USB device (Com#). 2. Usare GPSViewer per controllarlo.

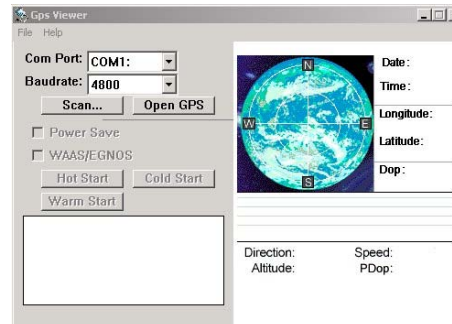
• GpsViewer (Strumento per il Testing)

(GPSViewer.exe è compatibile con Windows OS)

Fare doppio clic su GPSViewer.exe sul PC, il programma GPSViewer.exe si installerà automaticamente.

2. Aprire GPSViewer

Fare doppio clic sul pulsante **GPSViewer**



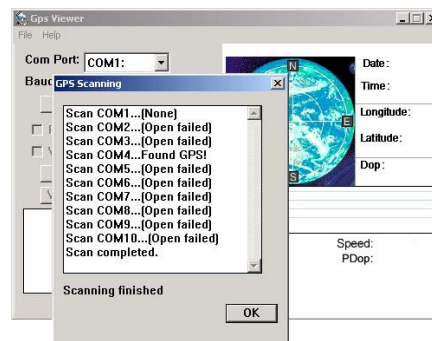
3. Set baud rate and Scan Com Port

Set **Baudrate:4800**



Selezionare **Scan**

Selezionare il tasto "Scan" (Scansione) per eseguire la scansione della porta COM usata dal PC.



4. Trova Porta Com e Apri GPS

Trova GPS

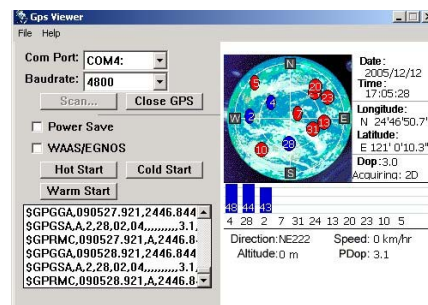
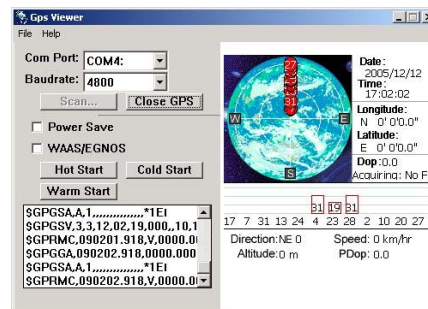


Selezionare la Porta Com corretta per GR-213U

Open GPS



È visualizzato lo Stato GPS



- Per maggiori informazioni, consultare il manuale utente nel CD in dotazione.

GR-213U

Spanish

GUÍA RÁPIDA

RECEPTOR GPS

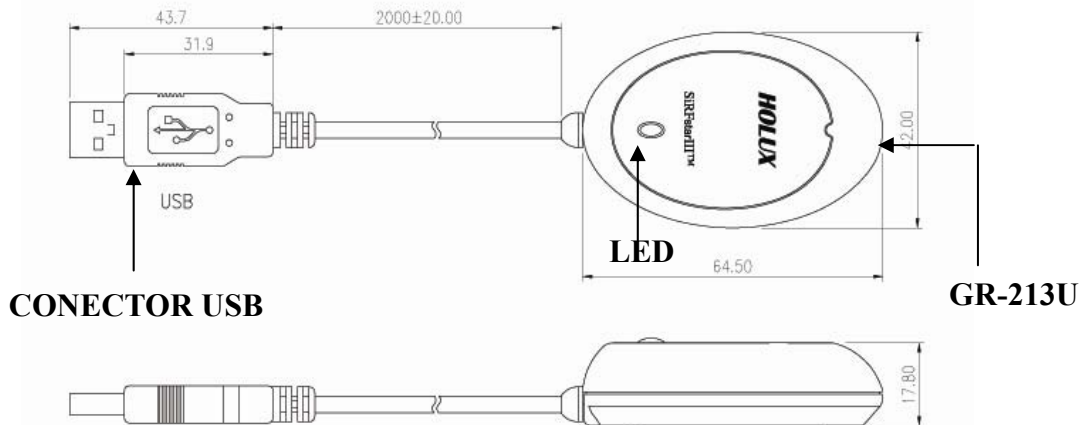


Lista de componentes

Estándar

- Receptor GPS
- CD de herramientas
- Guía rápida de GR-213U
- Tarjeta de garantía

Características de la unidad



LED

COLOR	ESTADO	DESCRIPCIÓN
naranja	Luz encendida	Adquiriendo satélites
	Parpadeando	Posición fijada

INTRODUCCIÓN

Tipo	
Conector de SALIDA	<p>FUENTE DE ALIMENTACIÓN: USB</p> <p>SALIDA DE DATOS: USB</p>
Installazione	<ol style="list-style-type: none"> 1. En primer lugar, instale el controlador USB en el ordenador o portátil. 2. Conecte el dispositivo al puerto USB. 3. El ordenador asignará el puerto COM del dispositivo.* <p>*Nota:</p> <ol style="list-style-type: none"> 1. Diríjase al administrador de dispositivos "Puerto com y de impresora", compruebe si aparece el dispositivo "HOLUX GPS USB (COM x)" 2. Use GPSViewer para probarlo.

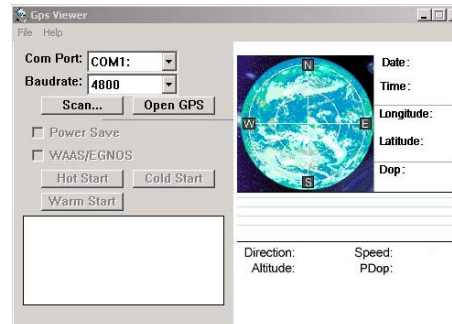
• GpsViewer (Herramienta de prueba)

(GPSViewer.exe es compatible con Windows OS)

Haga doble clic en GPSViewer.exe en su equipo, a continuación, el programa GPSViewer.exe se instalará automáticamente.

2. Abra GPSViewer

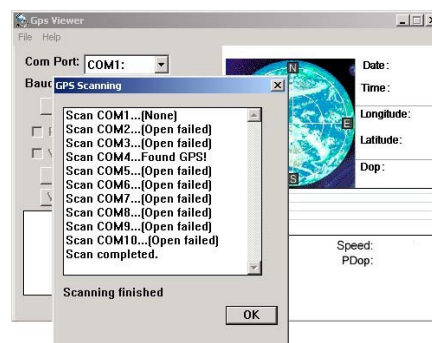
Haga doble clic en el botón **Visor GPS**



3. Ajuste la velocidad de baudios y el puerto Com de exploración

Ajustar velocidad de **Baudrate:4800**

Seleccionar **Scan**



Seleccione el botón "Explorar" para explorar el puerto COM que utiliza su PC.

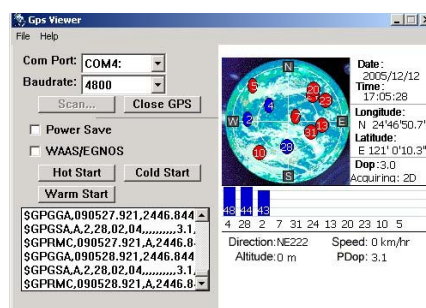
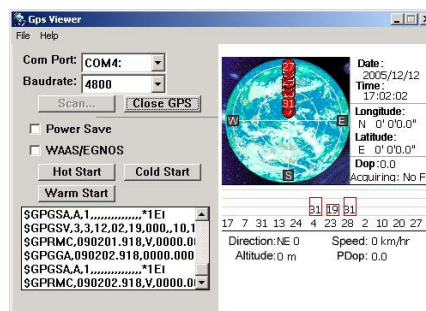
4. Puerto Com encontrado y Abrir GPS

Buscar GPS

Seleccione el puerto Com correcto para GR-213U

Open GPS

Se muestra el estado del GPS



- Para obtener más información, lea el manual del usuario que se incluye en el CD.

GR-213U

French

MANUEL DE DEMARRAGE RAPIDE

Récepteur GPS

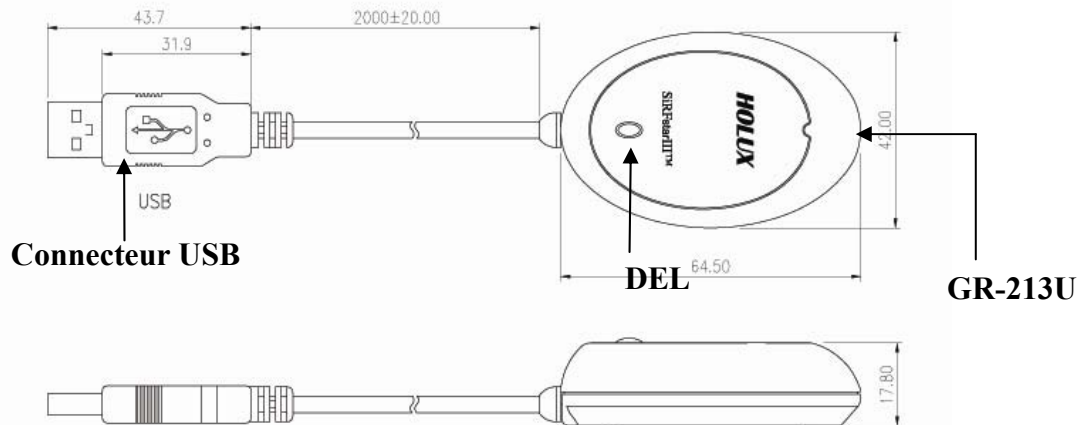


Liste des accessoires

Standard

- Récepteur GPS x 1
- CD Outil x 1
- GR-213U Manuel x 1
- Carte de garantie X 1

Caractéristiques des unités



DEL

COULEUR	ETAT	SIGNIFICATION
Orange	Allumé	Recherche des satellites
	Clignotant	Position fixée

DEMARRAGE

Type	
Connecteur de Sortie	Alimentation: USB Données de sortie: USB
Installation	<ol style="list-style-type: none"> 1. Installez en premier le pilote USB sur le PC ou l'ordinateur portable. 2. Connectez le périphérique au port USB. 3. Le PC choisira le port com du périphérique.* <p>* Remarques :</p> <ol style="list-style-type: none"> 1. Allez sur « Port COM & LPT » dans le gestionnaire de périphériques et vérifiez si le périphérique HOLUX GPS USB (Com#) est présent. 2. Utilisez GPSViewer pour le tester.

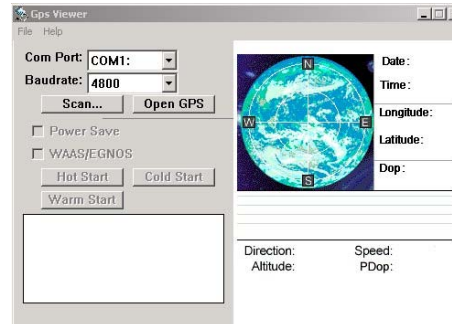
• GpsViewer (Outil de test)

(GPSViewer.exe est compatible avec Windows OS)

Double cliquez sur le GPSViewer.exe installé sur le PC, alors le programme GPSViewer.exe démarre aussitôt.

2. Ouvrir GPSViewer

Double-cliquez sur le bouton **GPSViewer**

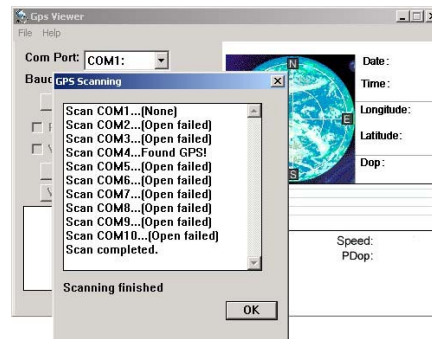


3. Configurer le baudrate et le port Scan Com

Configurer Baudrate: **4800**

Choisir **Scan**

Appuyez sur le bouton 'Scan' (Détecter) pour détecter le port COM utilisé par votre ANP (Assistant Numérique Personnel)



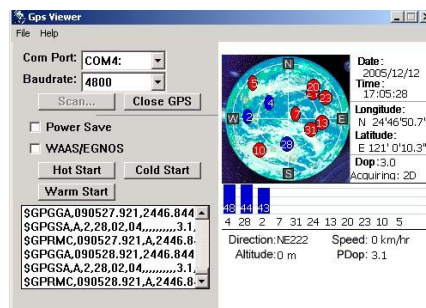
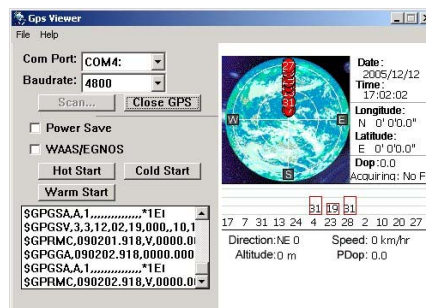
4. Retrouver le Port Com et ouvrir GPS

Retrouver GPS

Choisir le correct Port Com du GR-213U

Open GPS

Le statut GPS est affiché



- Pour plus d'informations, veuillez vous référer au Manuel d'utilisateur fourni ensemble avec le CD d'installation.

HOLUX

GR-213U

繁體中文

快速安裝手冊

GPS 接收機

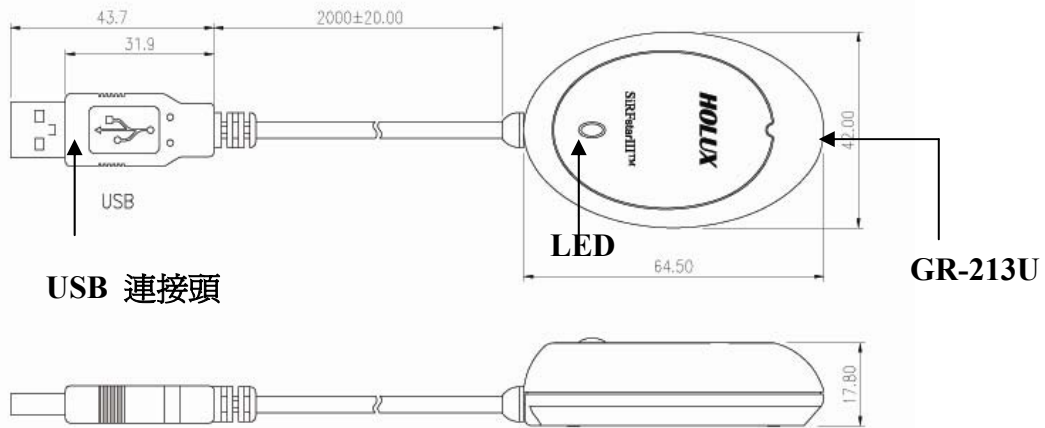


配件

標準配件

- GPS 接收機 乙 個
- Tool CD 乙 片
- GR-213U 快速安裝手冊 乙 份
- 保證卡 乙 張

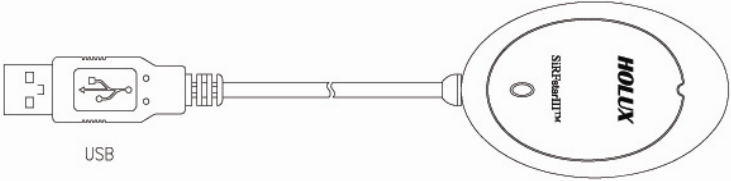
產品特性



LED

顏色	狀態	描述
橘色	亮燈	搜尋衛星中
	閃爍	已定位

開始操作

型式	
輸出 連接頭	電源供應: USB 資料輸出: USB
安裝步驟	<ol style="list-style-type: none"> 請先在個人電腦或筆記型電腦中安裝 USB 驅動程式。 將裝置連接到 USB 連接埠。 個人電腦會顯示裝置所使用的串列埠 (comport)。[*] <p>[*] 註：</p> <ol style="list-style-type: none"> 請到裝置管理員「Com & Lpt 連接埠」中，確認「HOLUX GPS USB 裝置」的 Com#。 使用 GPSViewer 進行測試。

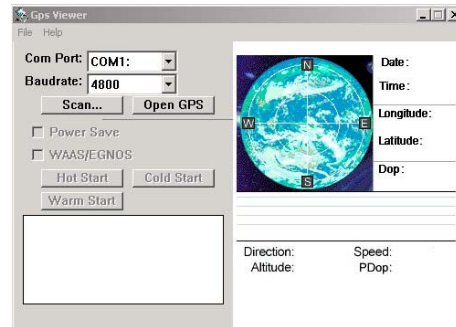
• GpsViewer (測試工具)

(GPSViewer 僅適用於 Windows OS)

連接兩下光碟中的GPSViewer.exe程式，此程式將自動安裝Hulox GPSViewer於您的PC中。

2. 開啓 GPSViewer

連接兩下 **GPSViewer**

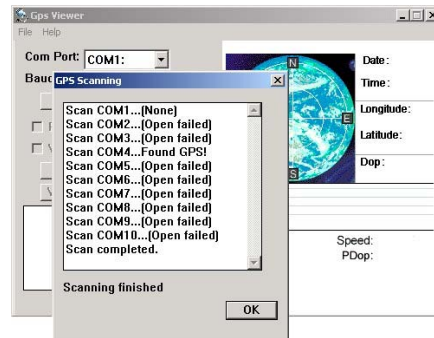


3. 設定 baud rate 並且 掃描 Com Port

設定 Baudrate 為 4800

選擇 **Scan**

選擇 **Scan** 按鈕以便執行掃描您 PC 上所使用的 COM Port

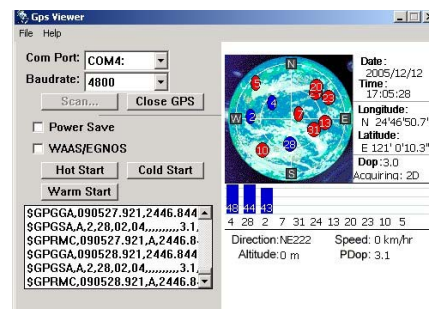
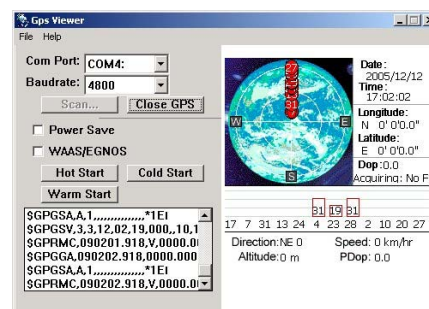


4. 找尋到 Com Port 且 開啓 GPS

選擇 GR-213U 正確的 COM PORT 位置

按 **Open GPS**

GPS 狀態顯示



-若需更詳細的資料，請參閱所附 CD 片中的使用手冊。

HOLUX

GR-213U

简体中文

快速安装手册

GPS 接收机

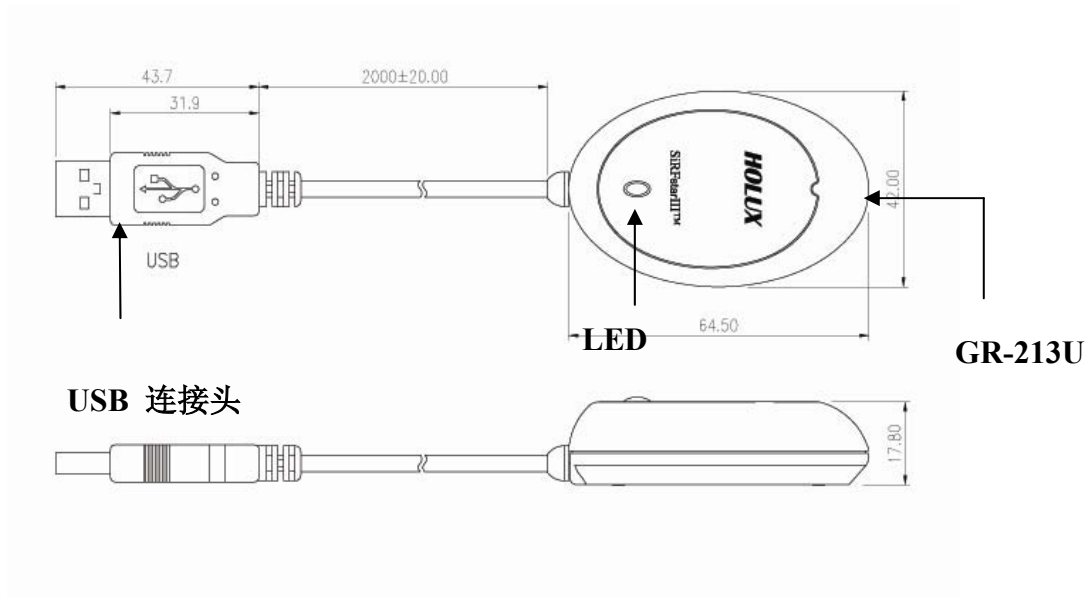


配件

标准配件

- GPS 接收机 乙 个
- Tool CD 乙 片
- GR-213U 快速安装手册 乙 份
- 保证卡 乙 张

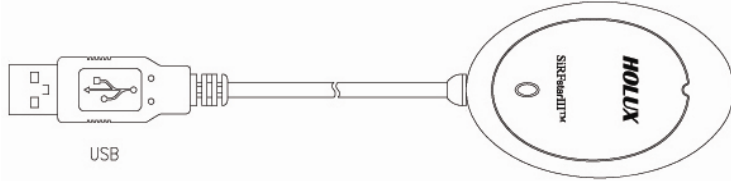
产品特性



LED

颜色	状态	描述
橘色	亮灯	搜寻卫星中
	闪烁	已定位

开始操作

型式	
输出 连接头	电源供应: USB 资料输出: USB
安装步骤	<ol style="list-style-type: none"> 首先在 PC 或笔记本电脑中安装 USB 驱动程序。 将设备连接到 USB 端口。 PC 将为设备分配 COM 端口。* <p>* 注意：</p> <ol style="list-style-type: none"> 请转到设备管理器“Com 和 Lpt 端口”，确认“HOLUX GPS USB 设备”的 Com#。 使用 GPSViewer 进行测试。

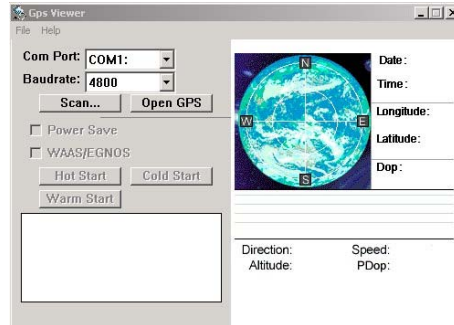
• GpsViewer (测试工具)

(GPSViewer 仅适用于 Windows OS)

连接两下光盘中的GPSViewer.exe程序，此程序将自动安装Hulox GPSViewer于您的PC中。

2. 开启 GPSViewer

连接两下 GPSViewer

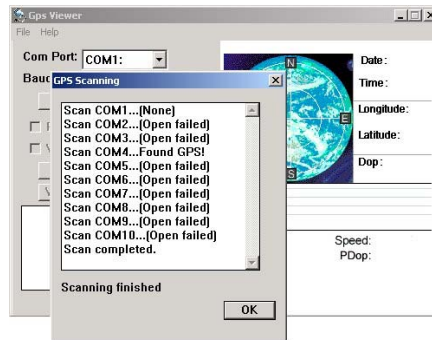


3. 设定 baud rate 并且 扫描 Com Port

设定 Baudrate 为 4800

选择 Scan

选择 Scan 按钮以便执行扫描您 PC 上所使用
的 COM Port

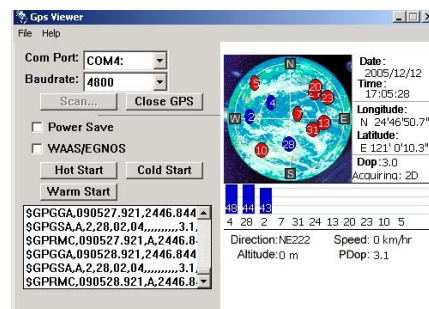
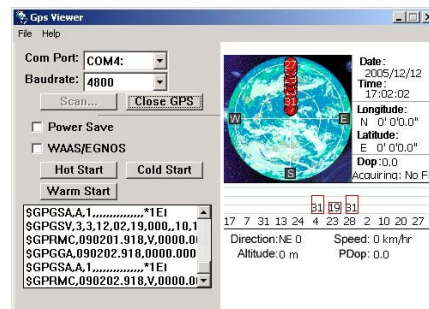


5. 找寻到 Com Port 且 开启 GPS

选择 GR-213U 正确的 COM PORT 位置

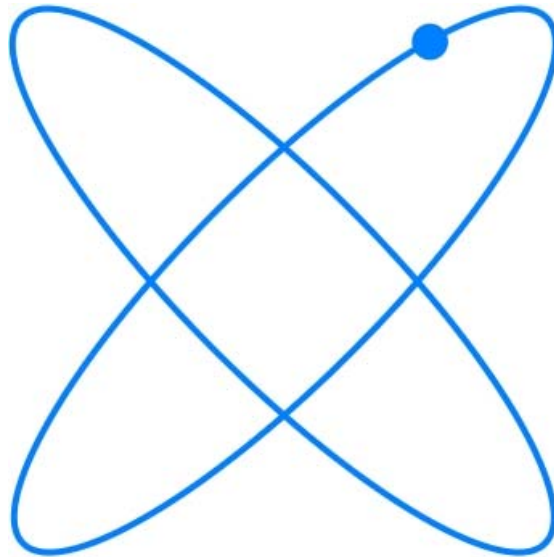
按 Open GPS

GPS 状态显示



-若需更详细的资料，请参阅所附 CD 片中的使用手册。

HOLUX



HOLUX

www.holux.com
info@holux.com.tw