

Identifying accessory kit contents

In addition to this poster and the documentation CD, the following items are included in the headphone accessory kit:

- 1 Earbuds
- 2 Bluetooth audio adapter (select models only)
- 3 HP Bluetooth receiver
- 4 Dual-head USB charging cable
- 5 Audio line-in cable
- 6 AC adapter (select models only)
- 7 Cable management clip
- 8 Travel pouch

NOTE: Some components may look slightly different from those pictured here.

Identificación de contenido del kit de accesorios

Además del póster y el documentation CD (CD de documentación), los elementos siguientes se incluyen en el kit de accesorios para auriculares:

- 1 Auriculares tipo earbud
- 2 Adaptador de audio Bluetooth (sólo en algunos modelos)
- 3 Receptor Bluetooth HP
- 4 Cable USB para carga de dos salidas
- 5 Cable de línea de entrada de audio
- 6 Adaptador de CA (sólo algunos modelos)
- 7 Clip de administración de cables
- 8 Estuche para viaje

NOTE: Algunos componentes pueden parecer ligeramente diferentes de aquellos mostrados aquí.

Identification du contenu du kit d'accessoires

Outre ce graphique et le CD de documentation, les éléments suivants sont inclus dans le kit d'accessoires d'écouteurs :

- 1 Oreillettes
- 2 Adaptateur audio Bluetooth (certains modèles)
- 3 Récepteur Bluetooth HP
- 4 Câble de chargement USB à deux têtes
- 5 Câble audio auxiliaire
- 6 Adaptateur secteur (certains modèles)
- 7 Fixation pour gestion du cordon
- 8 Mallette de transport

REMARQUE : certains composants peuvent être légèrement différents de ceux illustrés dans le présent document.



Bluetooth audio adapter components

- 1 Adapter status light
- 2 Adapter multifunction button
- 3 Audio-out (headphone) connector
- 4 Mini-USB port

Componentes de adaptador de audio Bluetooth

- 1 Indicador luminoso de estado del adaptador
- 2 Botón multifuncional de adaptador
- 3 Conector de salida de audio (auriculares)
- 4 Puerto mini-USB

Composants de l'adaptateur audio Bluetooth

- 1 Voyant d'état de l'adaptateur
- 2 Bouton multifonction de l'adaptateur
- 3 Connecteur de sortie audio (casque)
- 4 Mini port USB



Bluetooth receiver components

- 1 Mini-USB port
- 2 Audio-out (headphone) jack
- 3 Volume up button
- 4 Next/fast forward button*
- 5 Charging light
- 6 Volume down button
- 7 Receiver status light
- 8 Previous/rewind button*
- 9 Receiver multifunction button*

*These buttons function differently depending on whether you are connected to a Bluetooth-enabled computer or an audio device. Refer to the HP Bluetooth Pendant Headphones User Guide located on the HP Bluetooth Pendant Headphones Accessory User Guide disc for additional information.

Componentes del receptor Bluetooth

- 1 Puerto mini-USB
- 2 Conector de salida de audio (auriculares)
- 3 Botón de aumento de audio
- 4 Botón siguiente/avance rápido*
- 5 Indicador luminoso de carga
- 6 Botón de disminución de volumen
- 7 Indicador luminoso de estado del receptor
- 8 Botón anterior/rebobinar*
- 9 Botón multifuncional del receptor*

*Estos botones funcionan de manera diferente dependiendo si está conectado a un equipo compatible con Bluetooth o un dispositivo de audio. Consulte la Guía del Usuario de los Auriculares Colgantes HP Bluetooth ubicada en el disco HP Bluetooth Pendant Headphones Accessory User Guide (Guía del Usuario de accesorios para Auriculares Colgantes HP Bluetooth) para obtener información adicional.

Composants du récepteur Bluetooth

- 1 Mini port USB
- 2 Prise de sortie audio (casque)
- 3 Bouton d'augmentation du volume
- 4 Bouton suivant/avance rapide*
- 5 Voyant de charge
- 6 Bouton de réduction du volume
- 7 Voyant d'état du récepteur
- 8 Bouton précédent/retour*
- 9 Bouton multifonction du récepteur*

*Ces boutons fonctionnent différemment selon que vous êtes connecté à un ordinateur équipé du système Bluetooth ou à un périphérique audio. Pour plus d'informations, reportez-vous au Manuel de l'utilisateur des écouteurs Bluetooth HP qui se trouve sur le CD HP Bluetooth Pendant Headphones Accessory User Guide (Manuel d'utilisation des accessoires pour écouteurs Bluetooth HP).

Step 1

Charging the Bluetooth audio adapter (select models only) and Bluetooth receiver

Before you can use the headphones, you must charge both the audio adapter and the receiver. They can be charged using a USB port on your computer or using the AC adapter.

To charge the audio adapter and receiver, complete the following steps:

CAUTION: When removing the USB charging cable from a device, prevent damage to cable connectors by grasping each connector and then pulling gently. Do not pull on the cable to remove it from the device.

1. Be sure that the audio adapter and receiver are turned off.
2. Plug one of the two Mini-USB connectors into the Mini-USB port on the Bluetooth receiver.
3. Plug the other Mini-USB connector into the Mini-USB port on the audio adapter.
4. Plug the USB connector into the USB port on the AC adapter or the computer.



5. If you are using the AC adapter, plug the AC adapter into an AC outlet.



WARNING! To reduce the risk of electric shock or damage to the equipment, plug the AC adapter into an AC outlet that is easily accessible at all times.

The charging light turns on while the devices are charging and turns off after the audio adapter and receiver are fully charged.

NOTE: For safety and regulatory information, refer to the Regulatory, Safety and Environmental Notices. These notices are located on the HP Bluetooth Pendant Headphones Accessory User Guide disc and in Help and Support.

Step 2 Choose one of the following options to connect your headphones

Option 1 Using the earbuds with the Bluetooth audio adapter (select models only)

Before using the headphones, be sure that the audio adapter (provided with select models only) and receiver are charged.

To use the earbuds with the audio adapter, follow these steps:

1. Be sure that the audio adapter and receiver are turned off. When the status lights are off, the adapter and receiver are turned off.
2. Plug the audio adapter into the audio-out (headphone) jack of your audio device, such as a computer, mobile phone, or MP3 player.



3. Press and hold the audio adapter multifunction button for 3 seconds to turn on the audio adapter and begin pairing.

A blinking blue adapter status light indicates that the audio adapter is turned on.



4. Plug the earbuds into the audio-out (headphone) jack on the receiver.



5. Press and hold the receiver multifunction button for 3 seconds to turn on the receiver and begin pairing.

A blinking blue receiver status light indicates that the receiver is turned on.

NOTE: If your Bluetooth connection is lost or terminated, turn off the Bluetooth receiver and go to step 1 of this section to reestablish your Bluetooth connection.



The headphones are now ready for use. Open your media player software and begin listening to music or other audio output.

NOTE: You will need to turn off the headphones when you are done using them. Refer to the HP Bluetooth Pendant Headphones User Guide located on the HP Bluetooth Pendant Headphones Accessory User Guide disc for additional information.

Option 2

Using the headphones with a Bluetooth-enabled computer

NOTE: To determine whether your computer is Bluetooth-enabled, look for the Bluetooth icon in the notification area, at the far right of the taskbar.



Before using the headphones, be sure that the following conditions are met:

- The Bluetooth adapter and receiver are fully charged.
- Your computer battery is fully charged.
- Your computer is turned on.
- Your computer is a Bluetooth-enabled device.

Before you can use the headphones, you must establish a Bluetooth wireless connection with your computer, a process called *pairing*.

NOTE: Be sure that the computer Bluetooth device is on and enabled. For more information, click **Start**, click **Help and Support**, and then click **User Guides**.

Complete steps 1 through 3, and then continue to step 4 according to which operating system is on your computer.

1. Be sure that the receiver is turned off. When the status light is off, the receiver is turned off.
2. Plug the earbuds into the audio-out (headphone) jack on the receiver.



3. Press and hold the receiver multifunction button for 3 seconds to turn on the receiver and begin pairing.

A blinking blue receiver status light indicates that the receiver is on.



Continue to step 4 according to which operating system is on your computer.

Option 3

Using the audio line-in cable with other audio devices

NOTE: The audio adapter (select models only) and receiver can work without the earbuds and offer another way to listen to music. You can use the audio line-in cable with the audio adapter and receiver to enable 2 non-Bluetooth audio devices to communicate with each other.

To use the audio adapter and receiver with the audio line-in cable, follow these steps:

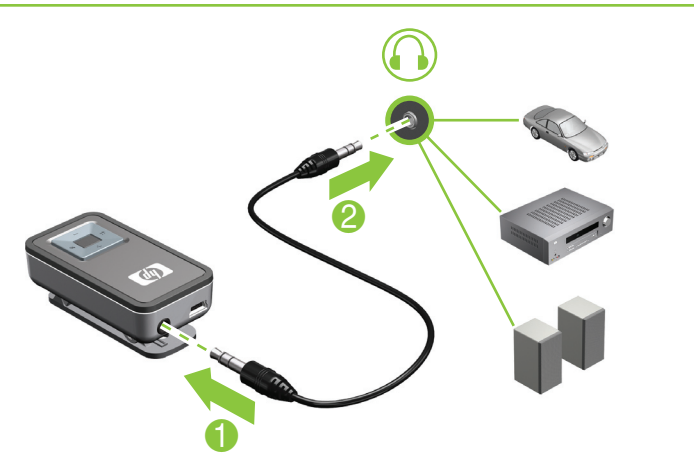
1. Be sure that the audio adapter and receiver are turned off. When the status lights are off, the audio adapter and receiver are turned off.
2. Plug the audio adapter into the audio-out (headphone) jack on your audio device, such as a computer, MP3 player, or CD player.



3. Plug one end of the audio line-in cable into the audio-out (headphone) jack on the receiver.

4. Plug the other end of the audio line-in cable into the auxiliary jack of an audio host, such as a stereo receiver, speakers, or car auxiliary port.

NOTE: Certain audio devices may need their interface switched to AUX mode or Line-in mode. This will switch the audio source and allow you to play music through the auxiliary jack.



5. Press and hold the audio adapter multifunction button for 3 seconds to turn on the audio adapter and begin pairing.

A blinking blue adapter status light indicates that the adapter is turned on and pairing.



6. Press and hold the receiver multifunction button for 3 seconds to turn on the receiver and begin pairing.

A blinking blue receiver status light indicates that the receiver is turned on and pairing.



The headphones are now ready for use. Open your media player software and begin listening to music or other audio output.

NOTE: You will need to turn off the headphones when you are done using them. Refer to the HP Bluetooth Pendant Headphones User Guide located on the HP Bluetooth Pendant Headphones Accessory User Guide disc for additional information.



