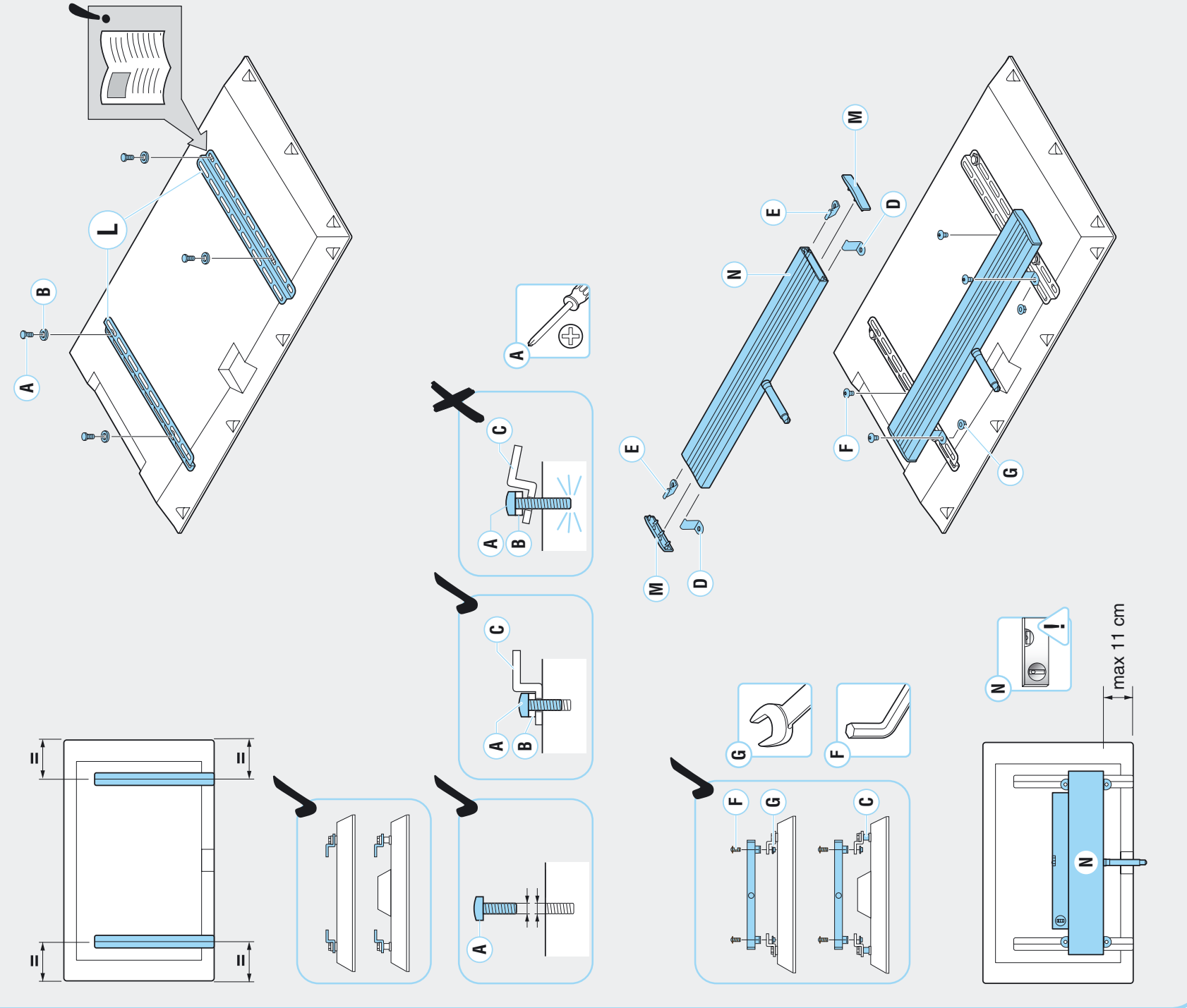
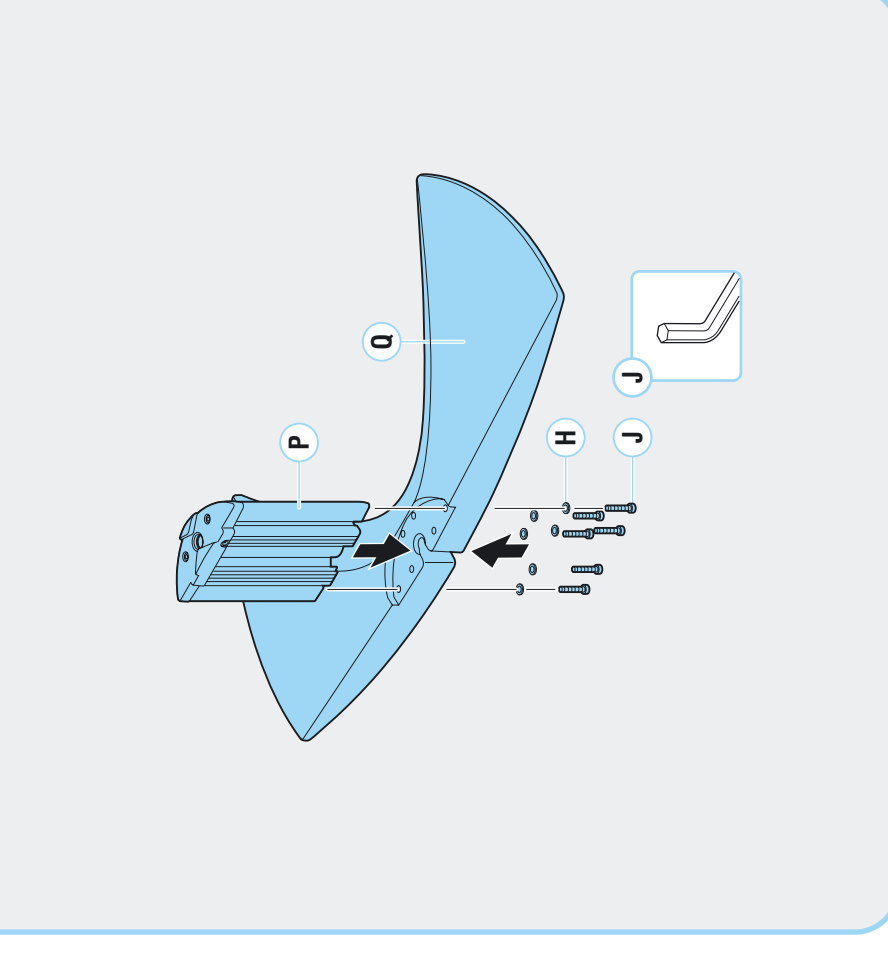


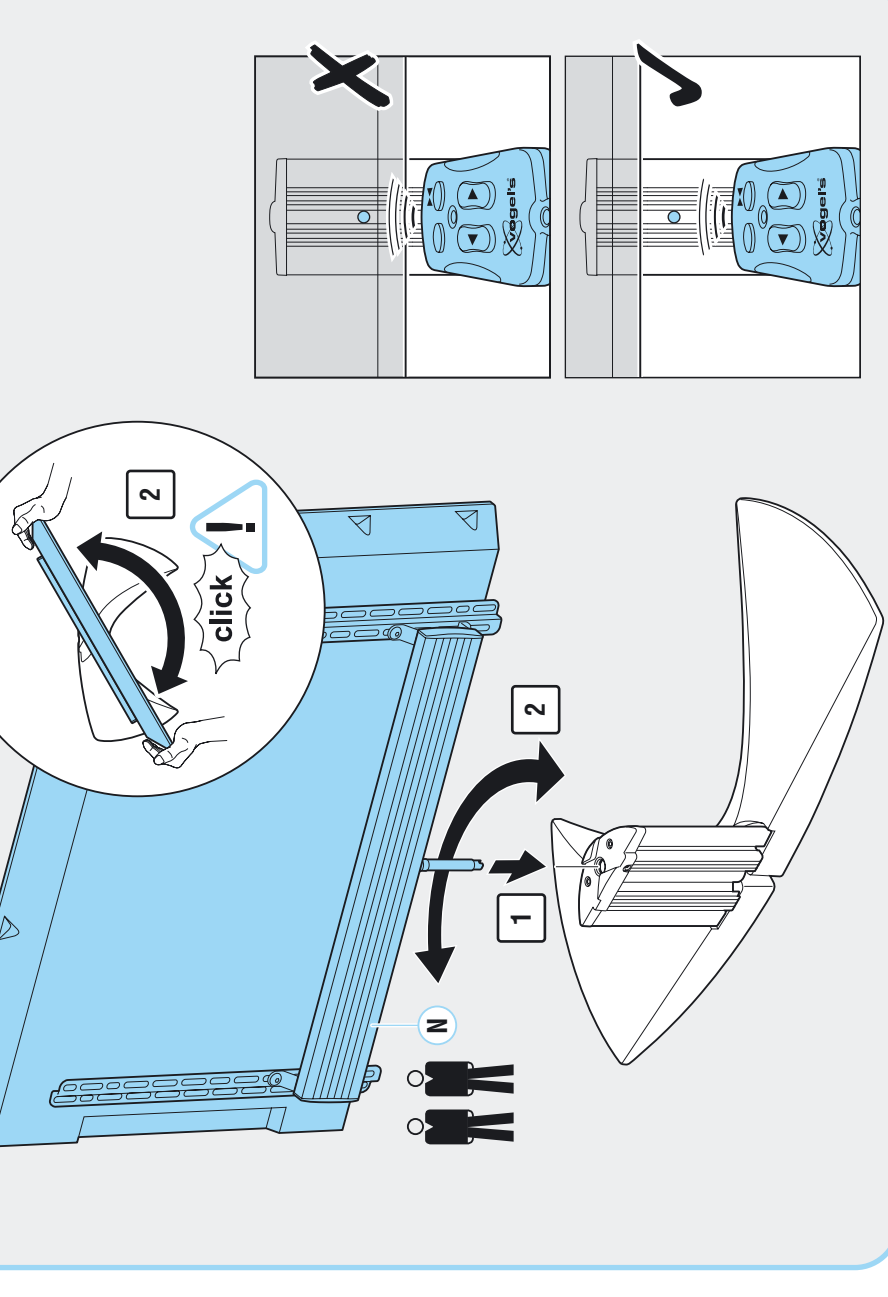
1 EFTE 2240 - EFTE 2265 - EFFE 1140



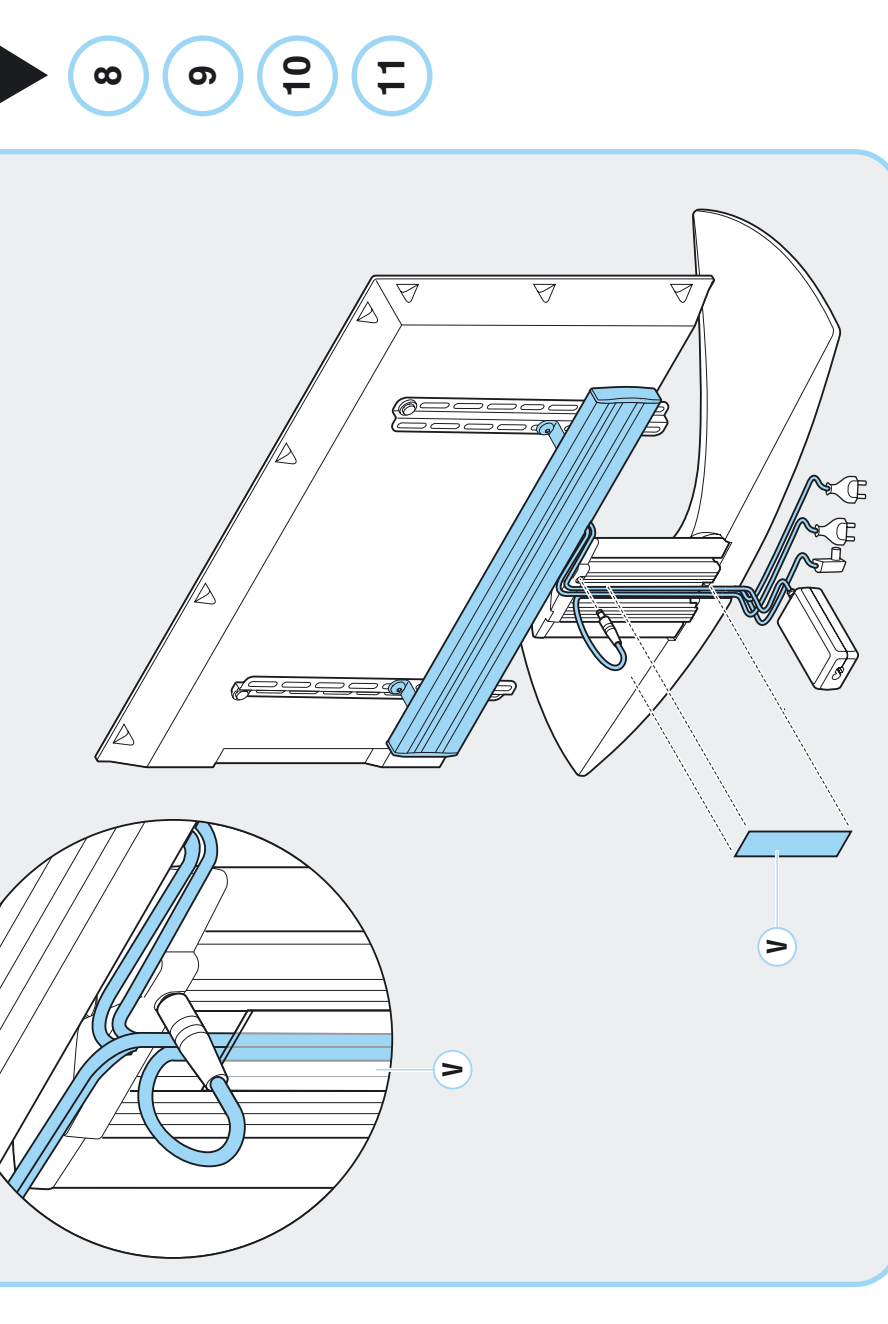
2 EFTE 2240 RC / EFTE 2265 RC



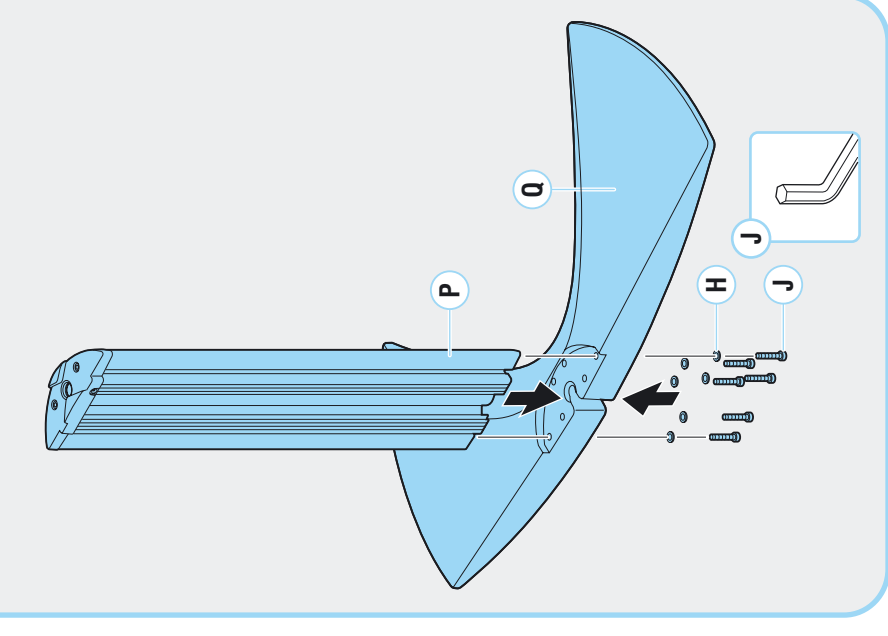
3



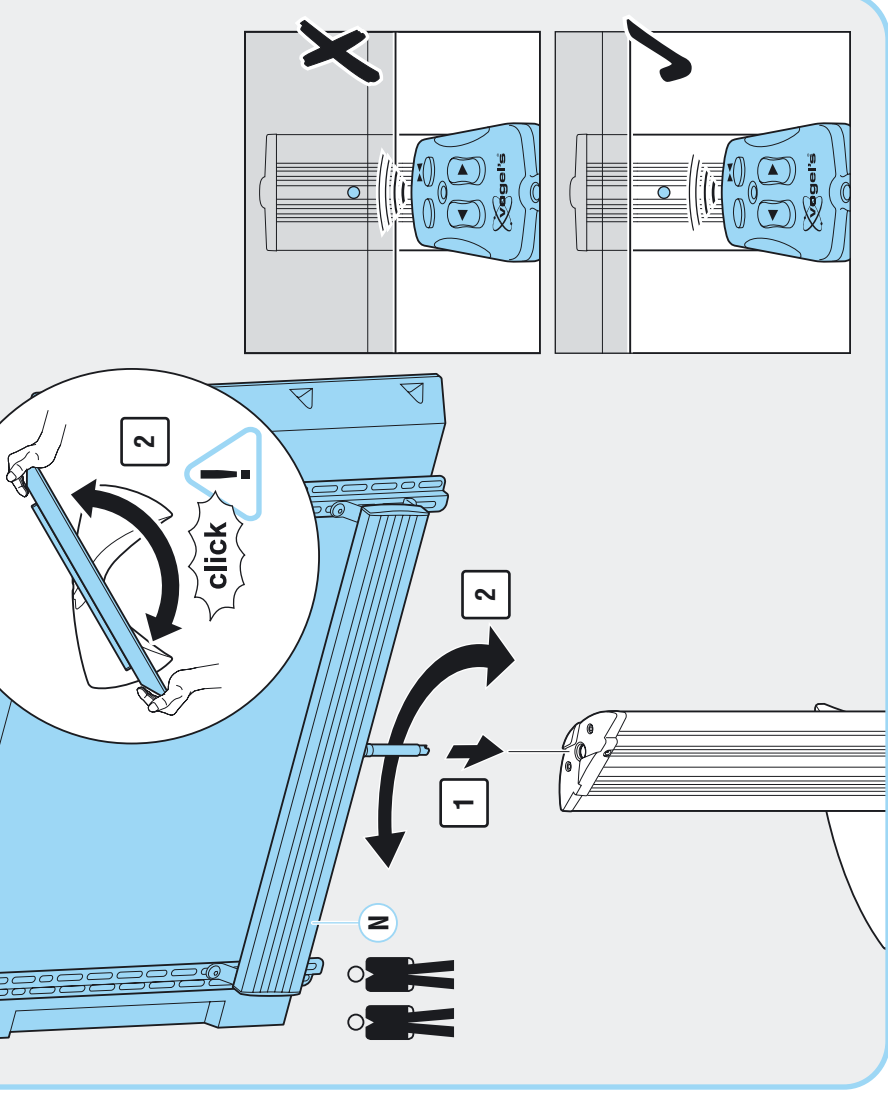
4 8 9 10 11



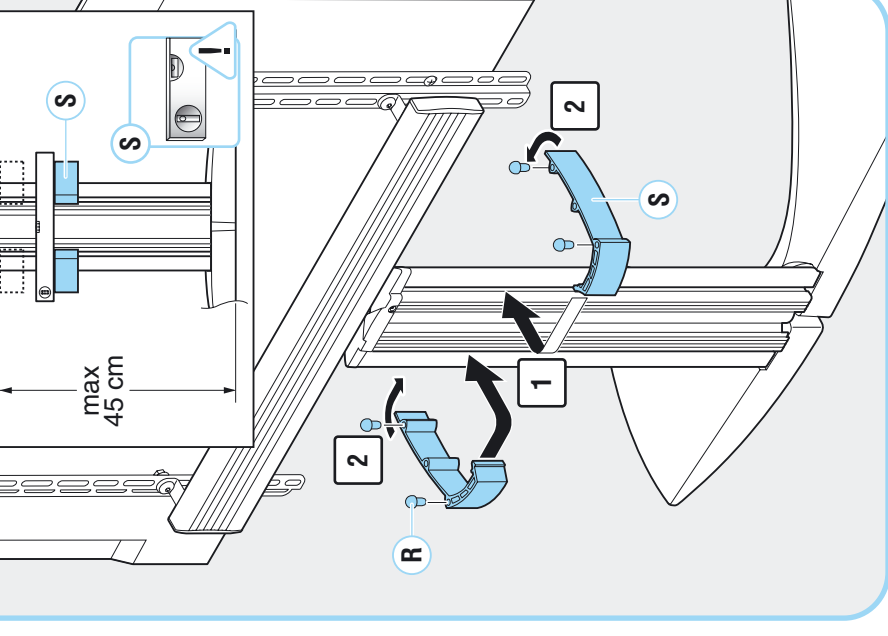
2 EFFE 1140 RC



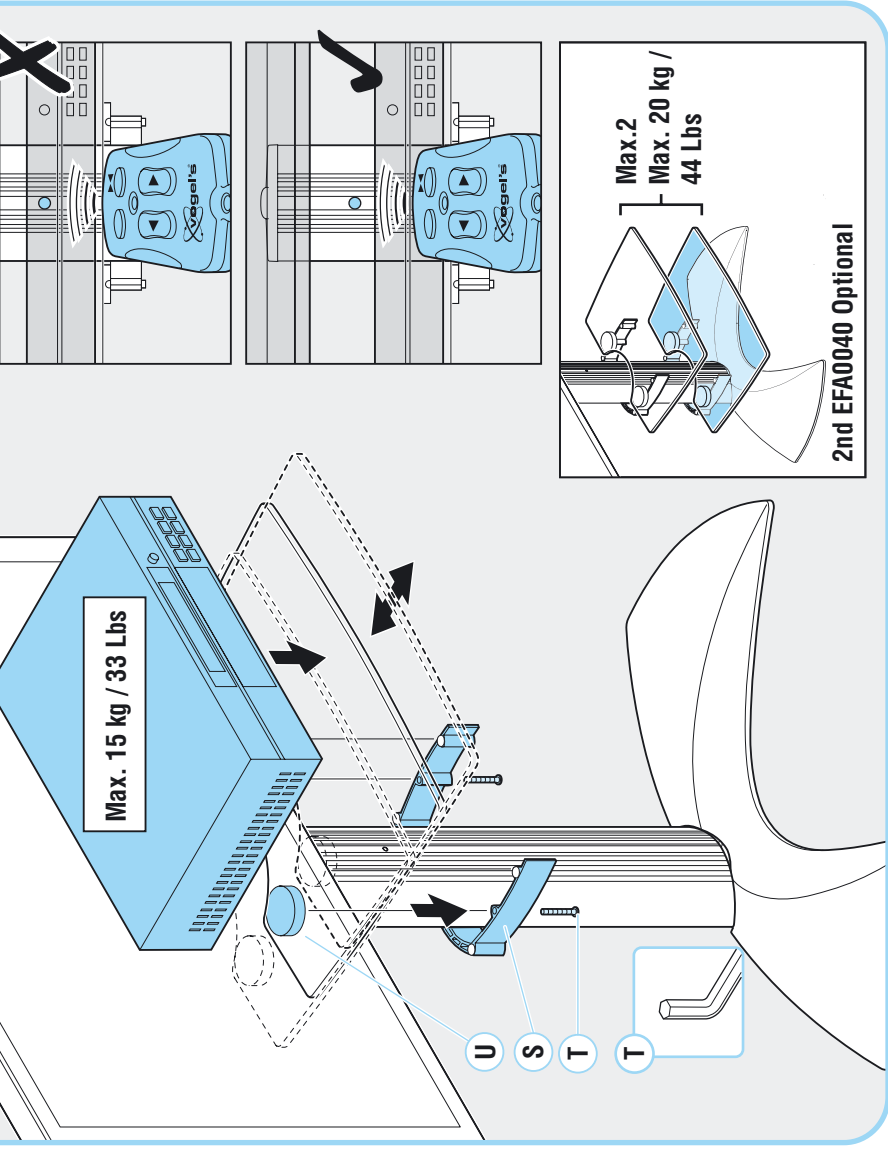
3



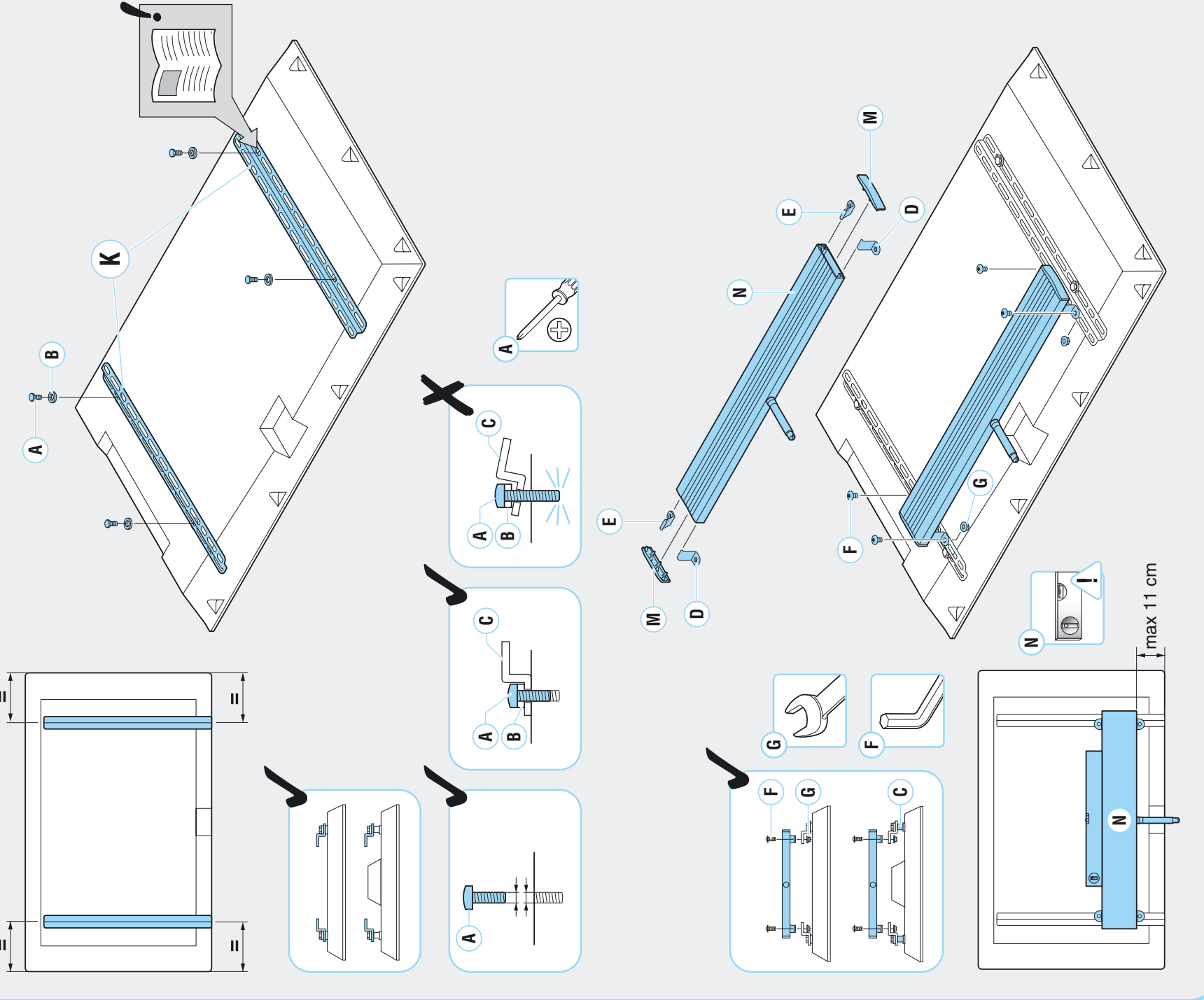
4



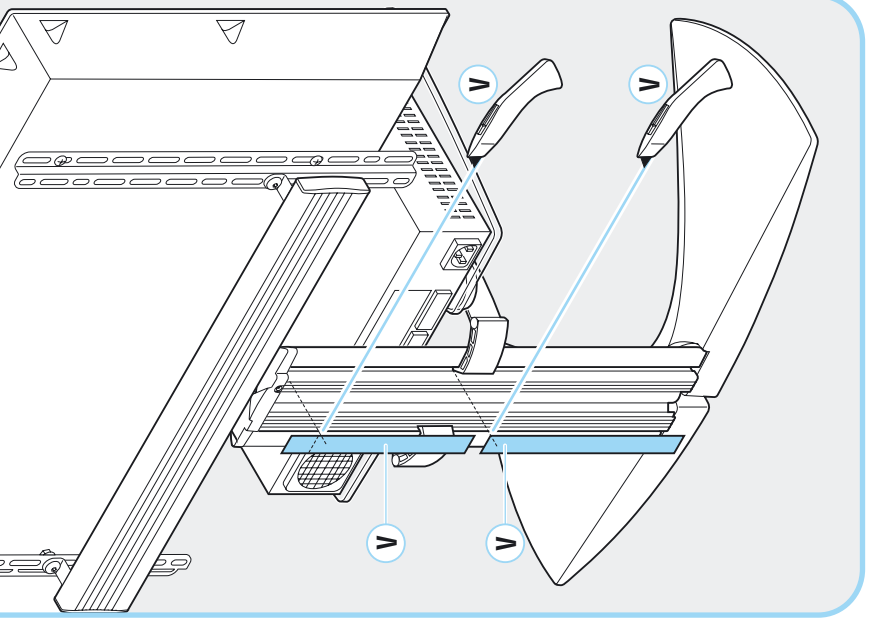
5



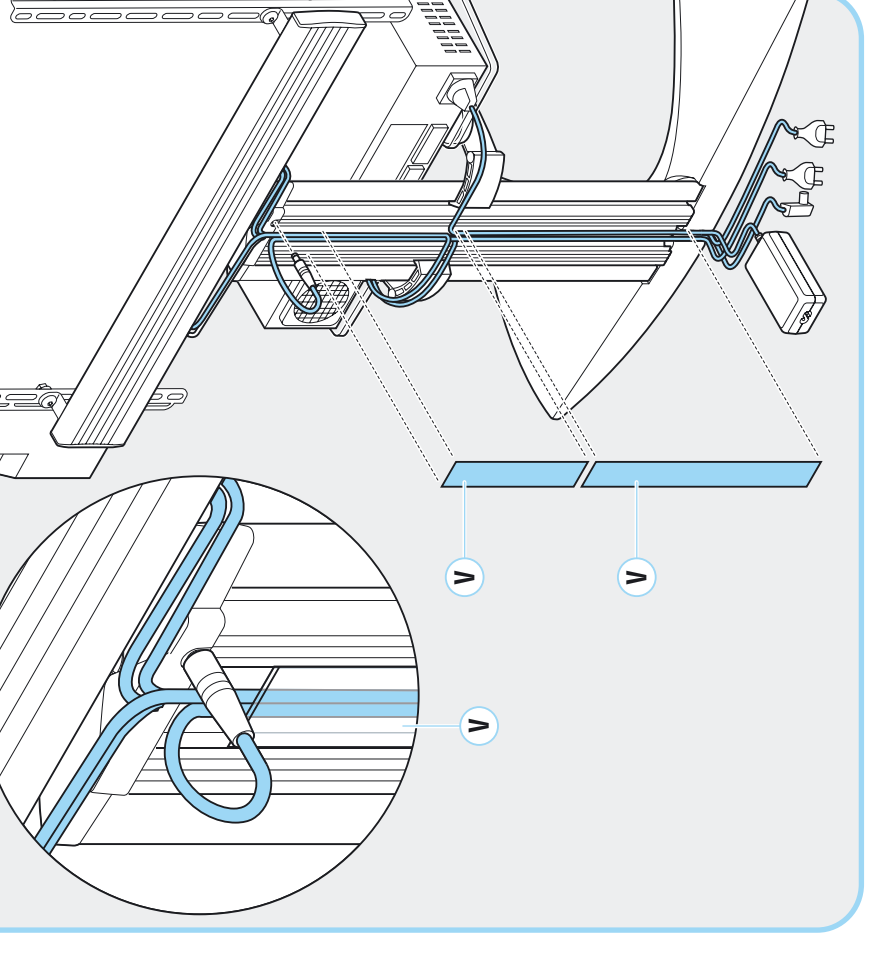
1 EFTE 2265 - EFFE 1140



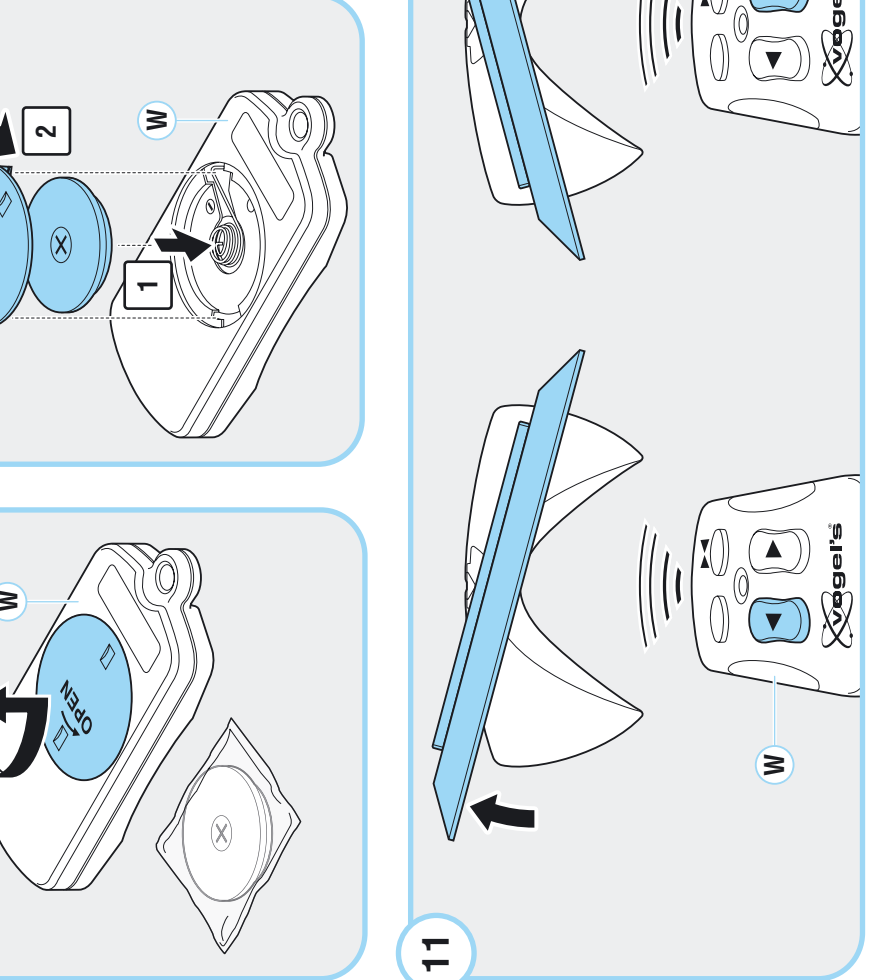
6



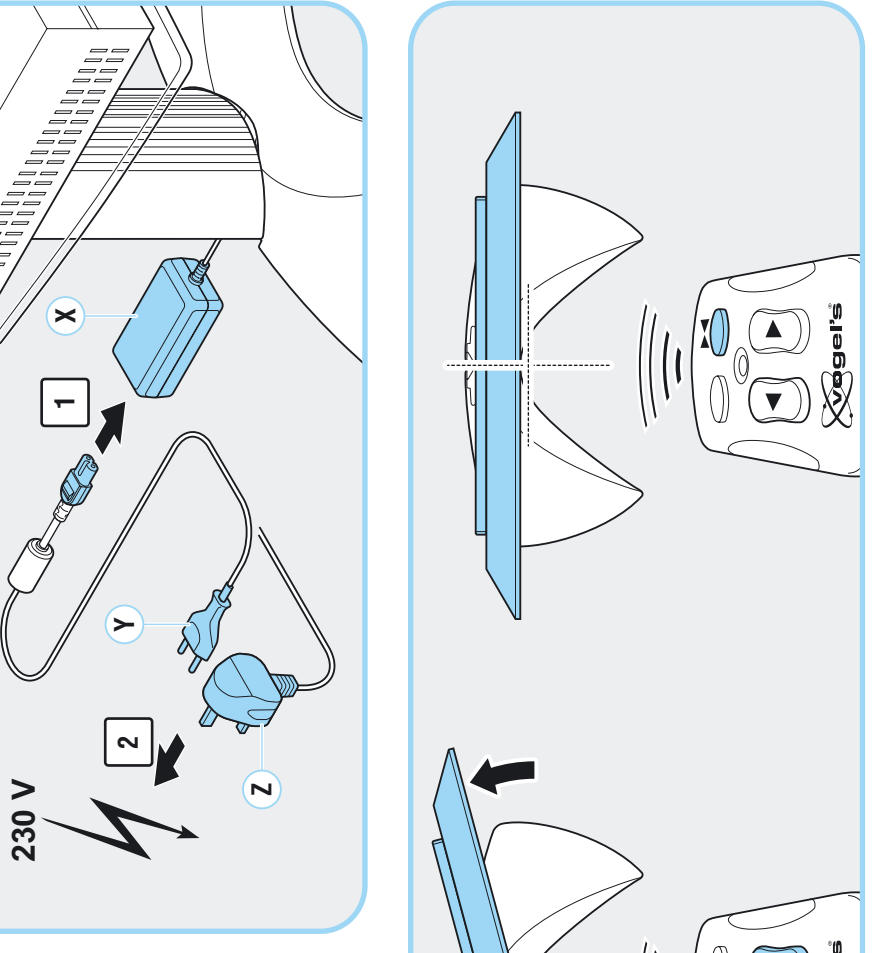
7



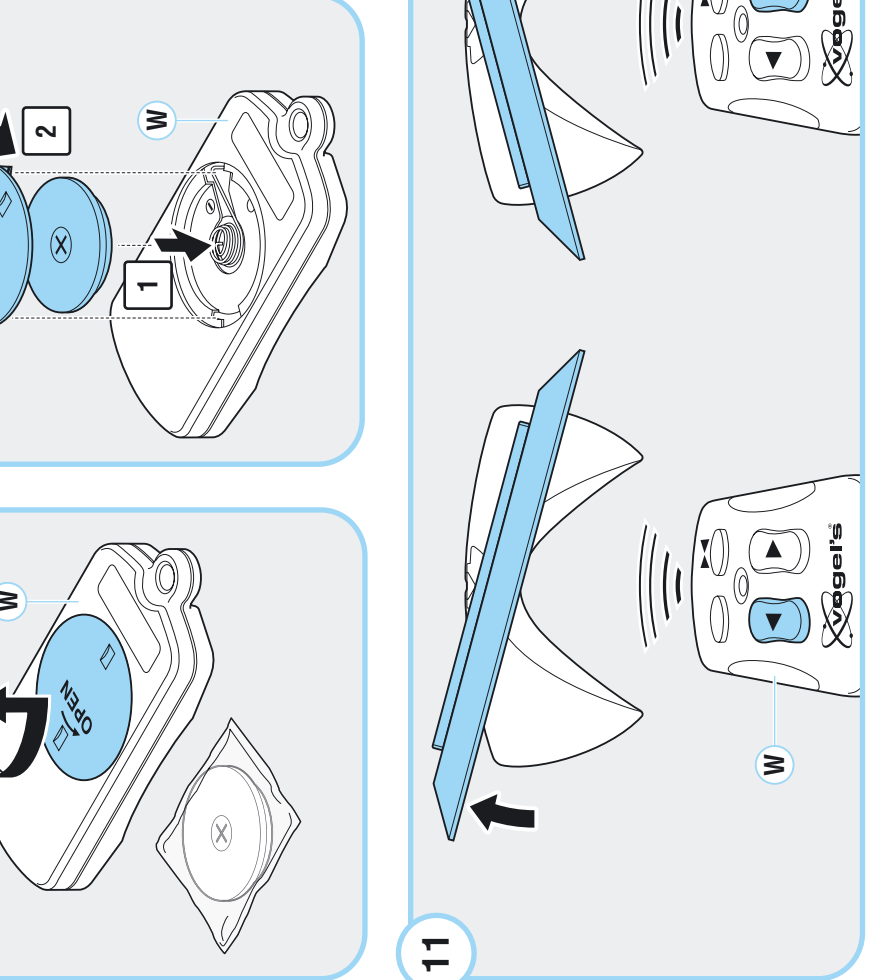
8



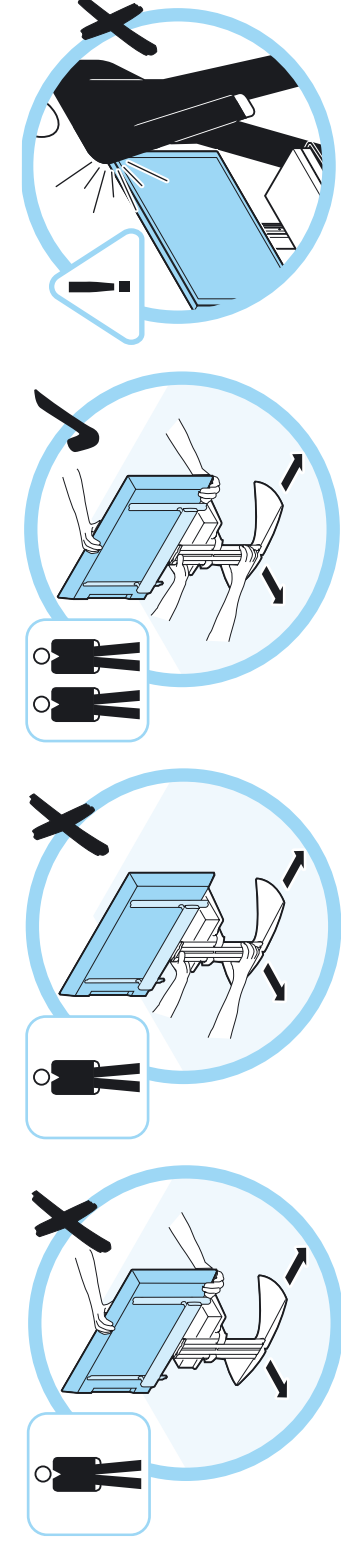
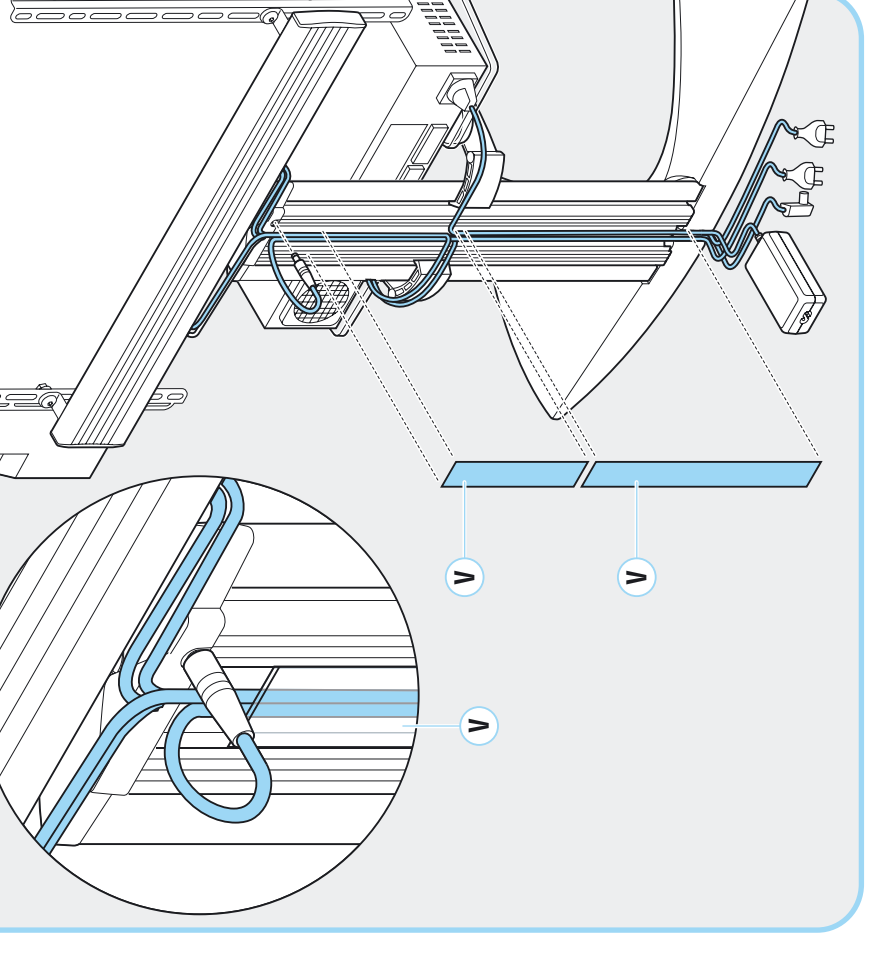
10



9



11



Printing errors and the right to make technical modifications reserved.
 Druckfehler und technische Änderungen vorbehalten.
 Sous réserve d'erreurs d'impression et de modifications techniques.
 Drukfouten en technische wijzigingen voorbehouden.
 Sujeto a erratas y modificaciones técnicas.
 Ci riserviamo il diritto di eventuali errori di stampa e modifiche tecniche.
 Errata e ristampe nas alterações técnicas.
 Misti fobanaili for tyypilisi och tehnilisi andringid.
 Z zaščitanim besedil nudimo informacijo zmanj tiskovnih in tehničnih napak.
 Chybny v listku a technické úpravy vyhrazeny.
 Чыбы в лісьці а тэхнічныя ўпраўленьні вы́разаюць.
 Nyomat hibák és műszaki módosítások fenntartva.
 Bask, habailan we teknik deňişikliken işi sorumy deňlidir.
 Este posibill sa se fiactul greşii de tipar, de asemenea ne rezervăm dreptul de a efectua modificări tehnice.
 Компані не несэ адпавяднасьць за помылкі і тэхнічны зьмены.
 Тэхнічныя мадыфікацыі.
 印刷エラーと技術的な修正についての権利保留。

EC DECLARATION OF CONFORMITY
 Concerning the machinery directive (98/37/EC) (in Vb)
 Zastaranje glede strojev (98/37/ES) (v zvezi z Vb)
 1. We are the manufacturer of the product.
 Flat screen Swivel stand
 Mark: Vogel's Products b.v.
 Serial number: 1140
 Serial no. of production numbers of these types to which this declaration refers
 2. The machine has been designed and built conforming with the requirements of the machinery directive 89/37/EEC (latest issue).
 3. The machine meets the requirements of the additional EC directives shown below:
 EMC-directive 89/336/EEC (latest issue)
 Low-voltage directive 2006/95/EEC (latest issue)
 4. The machine has been designed and built in conformity with the European Standards: NEN-EN 1050: 1997 Principles of risk assessment

