

-  English
-  Deutsch
-  Español
-  Français
-  Italiano
-  Nederlands
-  Português








QUICK INSTALLATION GUIDE

Wireless-G Broadband Router

Model: WRT54G2 (EU)



Table of Contents

 English	3
Installation	3
 Deutsch	8
Installation	8
 Español	13
Instalación	13
 Français	18
Installation	18
 Italiano	23
Installazione.....	23
 Nederlands	28
Installatie.....	28
 Português	33
Instalação	33

Online Resources

Website addresses in this document are listed without `http://` in front of the address because most current web browsers do not require it. If you use an older web browser, you may have to add `http://` in front of the web address.

Resource	Website
Linksys Europe	www.linksys.eu
Linksys International	www.linksys.com/international
Linksys	www.linksys.com
Glossary	www.linksys.com/glossary
Network Security	www.linksys.com/security

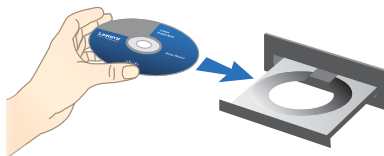
Copyright and Trademarks

Linksys is a registered trademark or trademark of Cisco Systems, Inc. and/or its affiliates in the U.S. and certain other countries. Copyright © 2008 Cisco Systems, Inc. All rights reserved. Other brands and product names are trademarks or registered trademarks of their respective holders.

English

Installation

- A.** Insert the Setup CD-ROM into your CD-ROM drive.



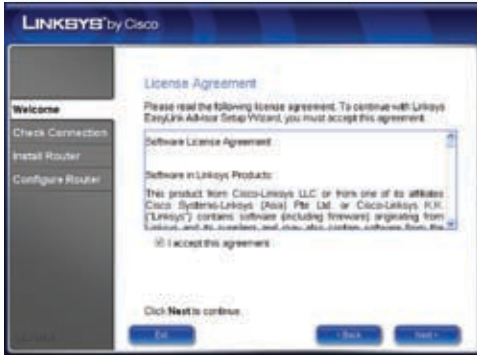
- B.** If asked, select your preferred language and click **OK**. To begin installation, click **Start Setup**.



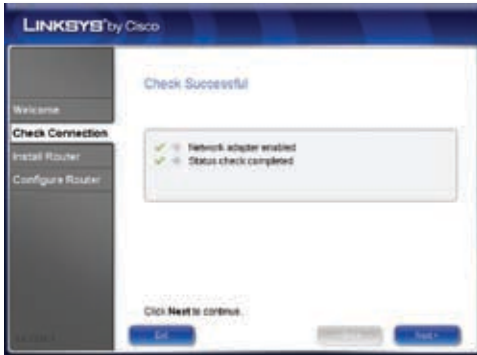
- C.** On the *Welcome* screen, click **Next**.



D. Select **I accept this agreement**. Click **Next**.



E. The Setup Wizard checks your connection. Click **Next**.

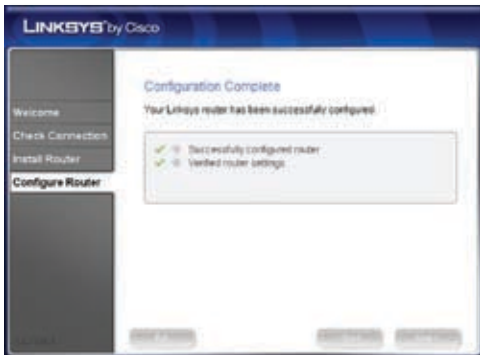


- F. The Setup Wizard displays a series of screens that walk you through the Router's physical installation. Follow the instructions in these screens.





- G.** Wait until the Setup Wizard configures the Router. When the *Configuration Complete* screen appears, click **Next**.



- H. Follow the instructions in the remaining screens until you see the *Network Configured* screen. Click on **Learn about connecting other computers to this network** to view sharing options, or click **Next** to close the Setup Wizard.



Congratulations! Setup is complete.

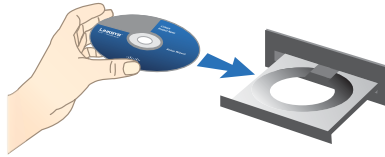


NOTE: For more advanced settings and security options, refer to the User Guide on the CD-ROM.

Deutsch

Installation

- A.** Legen Sie die Installations-CD-ROM in Ihr CD-ROM-Laufwerk ein.



- B.** Wenn Sie dazu aufgefordert werden, wählen Sie die gewünschte Sprache aus. Klicken Sie auf **OK**. Um mit der Installation zu beginnen, klicken Sie auf **Start Setup** (Setup starten).



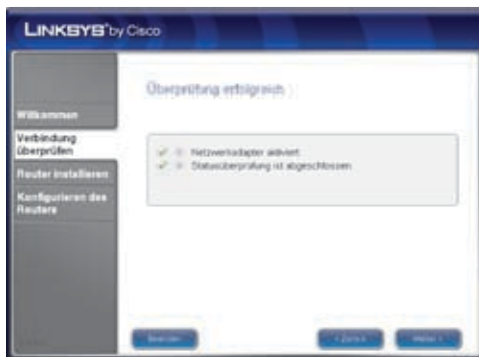
- C.** Klicken Sie im Fenster *Willkommen* auf **Weiter**.



- D.** Wählen Sie **Ich stimme der Vereinbarung zu** aus. Klicken Sie auf **Weiter**.



- E.** Der Setup-Assistent überprüft die Verbindung. Klicken Sie auf **Weiter**.

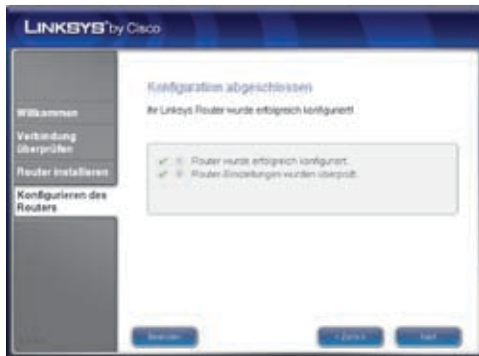


- F. Der Setup-Assistent zeigt mehrere Fenster mit Anweisungen an, die Ihnen beim Anschließen des Routers helfen.





- G.** Bitte warten Sie, bis der Setup-Assistent den Router konfiguriert hat. Klicken Sie dann im Fenster *Konfiguration abgeschlossen* auf **Weiter**.



- H. Befolgen Sie die Anweisungen, bis das Fenster *Netzwerk wurde konfiguriert* angezeigt wird. Klicken Sie auf **Information darüber, wie Sie andere Computer mit diesem Netzwerk verbinden**, um Informationen darüber zu erhalten, wie Sie andere Computer mit diesem Netzwerk verbinden können, oder klicken Sie auf **Weiter**, um den Setup-Assistenten zu beenden.



Gratulation! Die Einrichtung ist abgeschlossen.

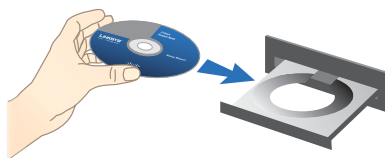


HINWEIS: Informationen zu erweiterten Einstellungen und Sicherheitsoptionen finden Sie im Benutzerhandbuch auf der CD-ROM.

Español

Instalación

- A. Introduzca el CD-ROM de configuración en la unidad de CD-ROM.



- B. Si se le solicita, seleccione el idioma que prefiera. A continuación haga clic en **OK**. Para comenzar la instalación, haga clic en **Start Setup** (Iniciar configuración).



- C. En la pantalla *Bienvenido*, haga clic en **Siguiente**.



- D. Haga clic en **Acepto el acuerdo**. Haga clic en **Siguiente**.



- E. El asistente de configuración comprueba la conexión. Haga clic en **Siguiente**.

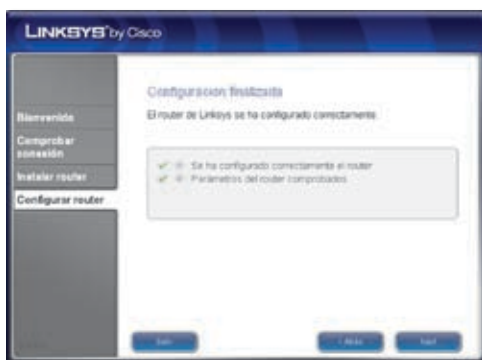


- F. El asistente de configuración muestra una serie de pantallas que le guiarán a través de la instalación física del router. Siga las instrucciones de estas pantallas.





- G.** Espere hasta que el asistente de configuración configure el router. Cuando se muestre la pantalla *Configuración completa*, haga clic en **Siguiente**.



- H. Siga las instrucciones de las otras pantallas hasta que aparezca la pantalla *Red configurada*. Haga clic en **Información sobre la conexión de otros ordenadores a la red** para ver las distintas opciones de intercambio o haga clic en **Siguiente** para cerrar el asistente de configuración.



Enhorabuena. La configuración ha finalizado.

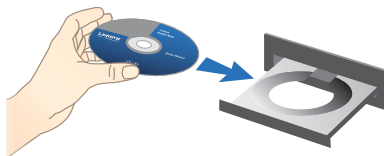


NOTA: Para obtener más información sobre parámetros avanzados y opciones de seguridad, consulte la guía del usuario del CD-ROM.

Français

Installation

- A. Insérez le CD-ROM d'installation dans le lecteur de votre ordinateur.



- B. Sélectionnez la langue de votre choix si vous y êtes invité. Cliquez ensuite sur **OK**. Pour démarrer l'installation, cliquez sur **Start Setup** (Lancer la configuration).



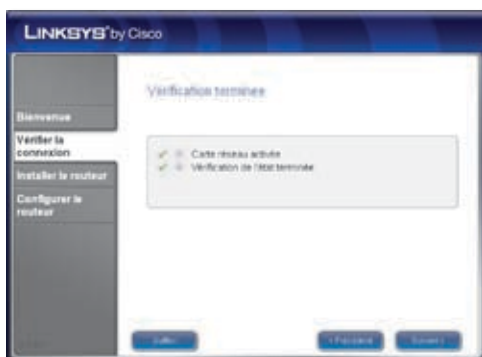
- C. Dans l'écran *Bienvenue*, cliquez sur **Suivant**.



D. Sélectionnez **J'accepte cet accord**. Cliquez sur **Suivant**.



E. L'Assistant de configuration vérifie votre connexion. Cliquez sur **Suivant**.

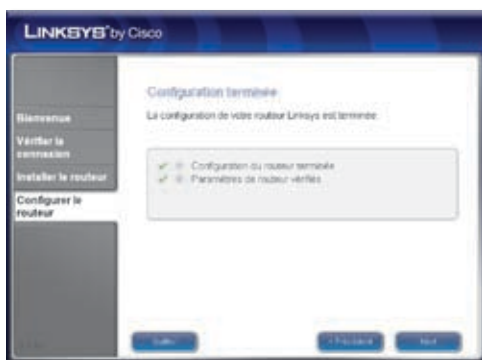


- F. L'Assistant de configuration affiche une série d'écrans pour vous guider tout au long de l'installation physique du routeur. Suivez les instructions de ces écrans.





- G.** Patientez jusqu'à ce que l'Assistant de configuration ait terminé de configurer le routeur. Lorsque l'écran *Configuration terminée* s'affiche, cliquez sur **Suivant**.



- H. Suivez les instructions des écrans suivants jusqu'à ce que l'écran *Réseau configuré* s'affiche. Cliquez sur **En savoir plus sur la connexion d'autres ordinateurs à votre réseau** pour afficher les options de partage ou cliquez sur **Suivant** pour fermer l'Assistant de configuration.



Félicitations ! La configuration est terminée.

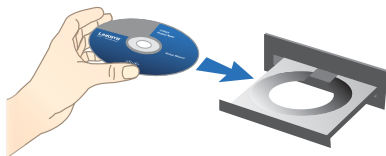


REMARQUE : Pour obtenir plus d'informations sur les paramètres avancés et sur les options de sécurité, reportez-vous au Guide de l'utilisateur figurant sur le CD-ROM.

Italiano

Installazione

- A.** Inserire il CD dell'installazione guidata nell'apposita unità.

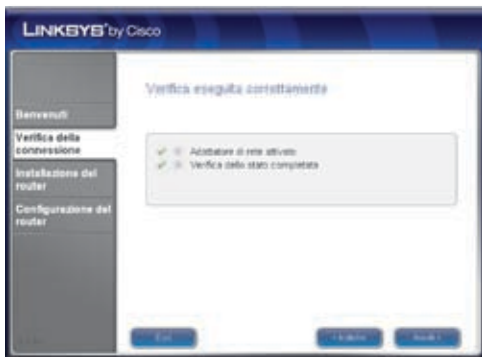


- B.** Se viene richiesto, selezionare la lingua preferita. Quindi, fare clic su **OK**. Per iniziare l'installazione, fare clic su **Start Setup** (Avvia installazione).



- C.** Nella schermata *Benvenuti*, fare clic su **Avanti**.



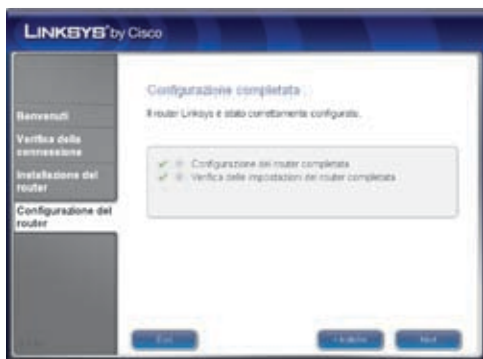
D. Selezionare **Accetto il contratto**. Fare clic su **Avanti**.**E.** L'installazione guidata verifica la connessione. Fare clic su **Avanti**.

- F.** L'installazione guidata visualizza una serie di schermate che guidano l'utente attraverso l'installazione fisica del router. Seguire le istruzioni visualizzate nelle schermate.





- G.** Attendere fino al completamento della configurazione del router. Quando viene visualizzata la schermata *Configurazione completata*, fare clic su **Avanti**.



- H. Seguire le istruzioni delle schermate successive fino a visualizzare la schermata *Rete configurata*. Per visualizzare le altre opzioni di condivisione, scegliere **Ulteriori informazioni sulla connessione di altri computer alla rete** oppure fare clic su **Avanti** per chiudere l'installazione guidata.



Congratulazioni! La configurazione è stata completata.

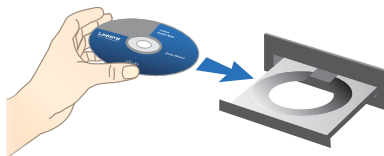


NOTA: per altre opzioni di protezione e impostazioni avanzate, consultare la Guida per l'utente disponibile nel CD-ROM.

Nederlands

Installatie

- A.** Plaats de installatie-cd in het cd-rom-station van uw computer.

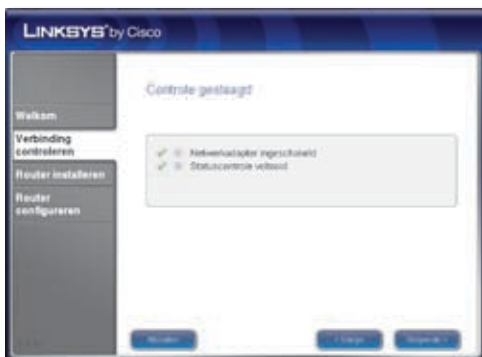


- B.** Selecteer als daarom wordt gevraagd de gewenste taal. Klik vervolgens op **OK**. Als u wilt beginnen met installeren, klikt u op **Start Setup** (Installatie starten).



- C.** Klik in het scherm *Welkom* op **Volgende**.



D. Selecteer **Ik ga akkoord met deze overeenkomst**. Klik op **Volgende**.**E.** De installatiewizard controleert uw verbinding. Klik op **Volgende**.

- F. De installatiewizard toont een reeks schermen, waarmee u door de fysieke installatie van de router wordt begeleid. Volg de instructies op deze schermen.





- G.** Wacht totdat de installatiewizard de router configureert. Wanneer het scherm *Configuratie voltooid* wordt weergegeven, klikt u op **Volgende**.



- H. Volg de instructies op de resterende schermen totdat u het scherm *Netwerk geconfigureerd* ziet. Klik op **Meer informatie over het verbinden van andere computers met dit netwerk** om opties voor delen weer te geven of klik op **Volgende** om de installatiewizard af te sluiten.



Gefeliciteerd! De installatie is voltooid.

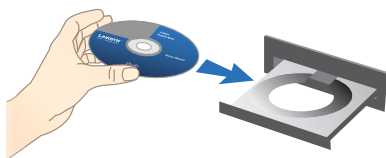


OPMERKING: Voor meer geavanceerde instellingen en beveiligingsopties raadpleegt u de gebruikershandleiding op de cd-rom.

Português

Instalação

- A. Coloque o CD-ROM de configuração na unidade de CD-ROM.



- B. Se for solicitado, seleccione o idioma da sua preferência. Em seguida, clique em **OK**. Para iniciar a instalação, clique em **Start Setup** (Iniciar configuração).



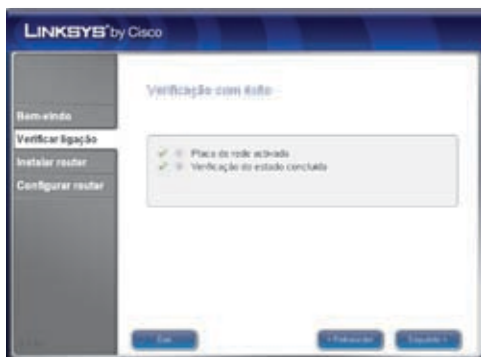
- C. No ecrã *Bem-vindo*, clique em **Seguinte**.



D. Selecciona **Aceito este contrato**. Clique em **Seguinte**.



E. O Assistente de configuração verifica a ligação. Clique em **Seguinte**.

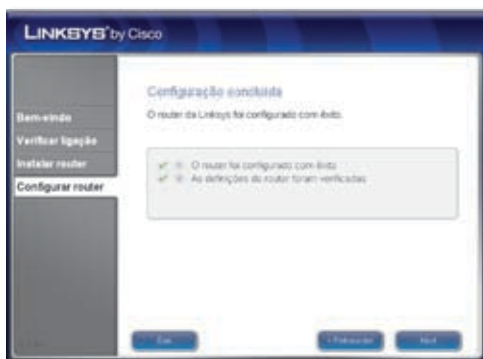


- F. O Assistente de configuração apresenta uma série de ecrãs que o ajudam no processo de instalação física do Router. Siga as instruções destes ecrãs.





- G.** Aguarde até que o Assistente de configuração configure o Router. Quando for apresentado o ecrã *Configuração concluída*, clique em **Seguinte**.




- H. Siga as instruções dos restantes ecrãs até ser apresentado o ecrã *Rede configurada*. Clique em **Informações sobre a ligação de outros computadores a esta rede** para ver as opções de partilha ou clique em **Seguinte** para fechar o Assistente de configuração.



Parabéns! A configuração está concluída.



NOTA: Para obter definições e opções de segurança mais avançadas, consulte o Manual do Utilizador no CD-ROM.

	Location	Web Address
	Belgique (Belgium)	www.linksys.com/BE/support
	Česká republika (Czech Republic)	www.linksys.com/CZ/support
	Danmark (Denmark)	www.linksys.com/DK/support
	Deutschland (Germany)	www.linksys.com/DE/support
	Die Schweiz (Switzerland)	www.linksys.com/CH/support
	España (Spain)	www.linksys.com/ES/support
	France	www.linksys.com/FR/support
	Ireland	www.linksys.com/IE/support
	Italia (Italy)	www.linksys.com/IT/support
	Nederlands (Netherlands)	www.linksys.com/NL/support
	Norge (Norway)	www.linksys.com/NO/support
	Österreich (Austria)	www.linksys.com/AT/support
	Россия (Russia)	www.linksys.com/RU/support
	Polska (Poland)	www.linksys.com/PL/support
	Portugal	www.linksys.com/PT/support
	Suomi (Finland)	www.linksys.com/FI/support
	Sverige (Sweden)	www.linksys.com/SE/support
	Türkiye (Turkey)	www.linksys.com/TR/support
	United Kingdom	www.linksys.com/UK/support



WEB: For a complete list of countries, visit www.linksys.eu or www.linksys.com/international



NOTE: For some countries, support may be available only in English.

LINKSYS[®] by Cisco

