

BELKIN.

Quick Installation Guide
Bluetooth® USB Adapter



EN

FR

DE

NL

ES

IT

PT

SV

GR

CZ

PL

HU

SK

TU

RU

RO

Introduction

PC System Requirements

- PC-compatible computer, CPU speed of 200MHz or above
- Memory: 64MB or above, 128MB recommended
- One available USB port, USB 1.1 or 2.0
- Windows® 98 SE, Me, 2000, XP, and Vista®

Mac® System Requirements

- One available USB port, USB 1.1 or 2.0
- Mac OS® X v10.2 or higher*

Product Contents

- *Bluetooth* USB Adapter
- CD-ROM for installation software and documentation

*Mac OS X driver and software provided by Apple®

Software Setup

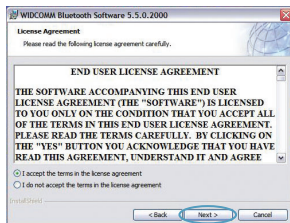
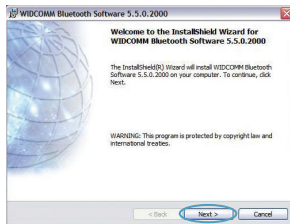
Software Setup for Windows 98 SE, Me, 2000, XP, and Vista

To install the software for the USB Adapter, follow the instructions below:

Note: The installation process for Windows XP or Windows Vista may look slightly different from Windows 98 SE, Me, and 2000. These instructions are based off a Windows XP computer.

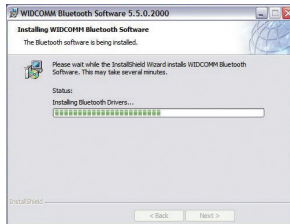
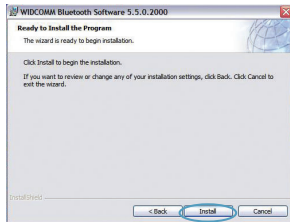
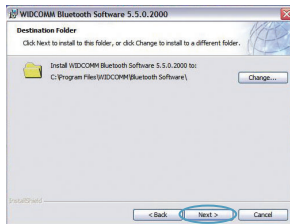
Note: Do not insert the USB Adapter into the USB port prior to software installation.

1. Insert the software installation CD-ROM into the PC's CD-ROM drive.
2. Select "install software" from the menu to begin installation.
3. The "Software InstallShield Wizard" window appears. Click on "Next" to begin the installation process.
4. Choose "I accept the terms in the license agreement" to accept the license agreement. Click on "Next" to continue.



Software Setup

- Specify the location where the software files will be installed on your hard drive. It is recommended that you install the software in the default directory “C:\Program Files\WIDCOMM\Bluetooth Software\”. Click on “Next” to continue.
- Confirm that the device software is ready to be installed and click on “Install”.
- The InstallShield Wizard will begin to install the Belkin *Bluetooth* Software. **This may take up to five minutes, please wait.**



Software Setup

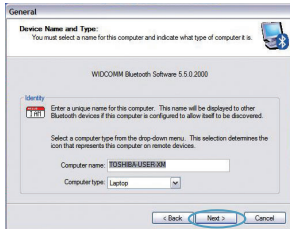
8. During the installation process, you may be prompted to insert your USB Adapter. If your USB Adapter is not plugged into your computer at this time, you may insert it into the desired USB port, and then click "OK" to continue.
9. Confirm the completion of the software installation and click "Finish".



Bluetooth Configuration

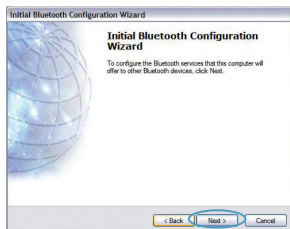
To start using the USB Adapter with your devices enabled with *Bluetooth* technology, you will need to configure your *Bluetooth* settings and run the *Bluetooth* Device Selection wizard.

1. Double-click on the *Bluetooth* Places icon found on your desktop screen or the *Bluetooth* icon in the system tray.
2. The *Bluetooth* Configuration Wizard will appear. Click "Next".
3. Specify the computer name that will be displayed to other *Bluetooth* devices and click "Next".

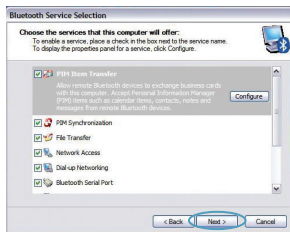


Bluetooth Configuration

4. The Initial *Bluetooth* Configuration Wizard will appear. Click “Next”.



5. Choose the *Bluetooth* services you would like to have available on your computer. We recommend that you leave the default settings and click “Next”.



Bluetooth setup is now complete.

Click “Next” to continue and connect to your devices enabled with *Bluetooth* technology.

Click “Skip” to close the Configuration Wizard.



Information

Free Tech Support* *National call rates may apply

www.belkin.com

You can find additional support information on our website www.belkin.com through the tech-support area. If you want to contact technical support by phone, please call the number you need from the list below*.

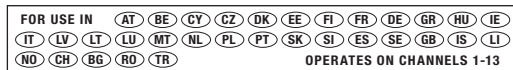
Country	Number	Internet address
AUSTRIA	08 - 20 20 07 66	http://www.belkin.com/uk
BELGIUM	07 07 00 073	http://www.belkin.com/nl
CZECH REPUBLIC	23 900 04 06	http://www.belkin.com/uk
DENMARK	701 22 403	http://www.belkin.com/uk
FINLAND	00800 - 22 35 54 60	http://www.belkin.com/uk
FRANCE	08 - 25 54 00 26	http://www.belkin.com/fr
GERMANY	0180 - 500 57 09	http://www.belkin.com/de
GREECE	00800 - 44 14 23 90	http://www.belkin.com/uk
HUNGARY	06 - 17 77 49 06	http://www.belkin.com/uk
ICELAND	800 8534	http://www.belkin.com/uk
IRELAND	0818 55 50 06	http://www.belkin.com/uk
ITALY	02 - 69 43 02 51	http://www.belkin.com/it/support/tech
LUXEMBOURG	34 20 80 8560	http://www.belkin.com/uk
NETHERLANDS	0900 - 040 07 90 €0.10 per minute	http://www.belkin.com/nl
NORWAY	815 00 287	http://www.belkin.com/uk
POLAND	00800 - 441 17 37	http://www.belkin.com/uk
PORTUGAL	707 200 676	http://www.belkin.com/uk
RUSSIA	495 580 9541	http://www.belkin.com/uk
SOUTH AFRICA	0800 - 99 15 21	http://www.belkin.com/uk
SPAIN	902 - 02 43 66	http://www.belkin.com/es/support/tech
SWEDEN	07 - 71 40 04 53	http://www.belkin.com/se/support/tech
SWITZERLAND	08 - 48 00 02 19	http://www.belkin.com/uk
UNITED KINGDOM	0845 - 607 77 87	http://www.belkin.com/uk
OTHER COUNTRIES	+44 - 1933 35 20 00	

Information

EU NOTICE

Bluetooth apparatus F8T016 & F8T017 comply with the requirements of EC Directive 1995/5/EC and are CE marked according to their classification.

These products are tested to and meet the requirements of the standards shown on their respective Declarations of Conformity.



Restricted Use in Certain Countries.....Class 2 Equipment

For information on product disposal please refer to <http://environmental.belkin.com>



BELKIN®

www.belkin.com

Belkin Tech Support

Europe : www.belkin.com/support

Belkin Ltd.

Express Business Park, Shipton Way
Rushden, NN10 6GL, United Kingdom

+44 (0) 1933 35 2000

+44 (0) 1933 31 2000 fax

Belkin B.V.

Boeing Avenue 333
1119 PH Schiphol-Rijk, Netherlands

+31 (0) 20 654 7300

+31 (0) 20 654 7349 fax

Belkin GmbH

Hanebergstraße 2,
80637 Munich, Germany

+49 (0) 89 143405 0

+49 (0) 89 143405 100 fax

Belkin SAS

130 rue de Silly
92100 Boulogne Billancourt, France

+33 (0) 1 41 03 14 40

+33 (0) 1 41 31 01 72 fax

Belkin Iberia

C/ Anabel Segura, 10 planta baja, Of. 2
28108, Alcobendas, Madrid, Spain

+34 91 791 23 00

+34 91 490 23 35 fax

© 2008 Belkin International, Inc. All rights reserved. All trade names are registered trademarks of respective manufacturers listed. The *Bluetooth* name and the *Bluetooth* trademarks are owned by *Bluetooth SIG*, Inc. and are used by Belkin International, Inc., under license. *Mac*, *Mac OS*, and *Apple* are trademarks of *Apple Inc.*, registered in the U.S. and other countries. *Windows* and *Windows Vista* are either registered trademarks or trademarks of *Microsoft Corporation* in the United States and/or other countries.

BELKIN.

Guide d'installation rapide

Bluetooth



EN

FR

DE

NL

ES

IT

PT

SV

GR

CZ

PL

HU

SK

TU

RU

RO

Introduction

Configuration requise pour PC

- Ordinateur compatible PC avec processeur de 200 MHz ou plus
- Mémoire : 64 Mo ou plus, 128 Mo recommandé
- Un port USB libre (USB 1.1 ou 2.0)
- Windows® 98 SE, 2000, Me, XP ou Vista®

Configuration requise pour Mac®

- Un port USB libre (USB 1.1 ou 2.0)
- Mac OS® X v10.2 ou supérieur*

Contenu du produit

- *Bluetooth*
 - CD-ROM comprenant le logiciel d'installation et la documentation
- *Pilote et logiciel Mac OS X fournis par Apple®

Installation du logiciel

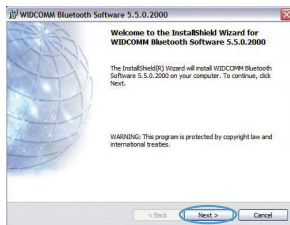
Installation du logiciel pour Windows 98 SE, Me, 2000, XP et Vista

Pour installer le logiciel de l'adaptateur USB, procédez comme suit :

Remarque : L'installation sous Windows XP peut être légèrement différente de celles sous Windows 98 SE, Me et 2000. Ces instructions sont basées sur un ordinateur sous Windows XP.

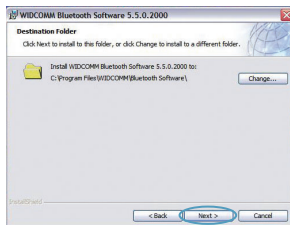
Remarque : N'insérez pas l'adaptateur USB dans le port USB avant l'installation du logiciel.

1. Insérez le CD d'installation du logiciel dans le lecteur de CD-ROM du PC.
2. Sélectionnez « install software [Installer le logiciel] » à partir du menu pour commencer l'installation.
3. La fenêtre de l'assistant d'installation du logiciel InstallShield apparaît. Cliquez sur « Next [Suivant] » pour commencer l'installation.
4. Choisissez l'option « I accept the terms in the license agreement [J'accepte les termes du contrat de licence] » pour accepter le contrat de licence. Cliquez sur « Next [Suivant] » pour continuer.

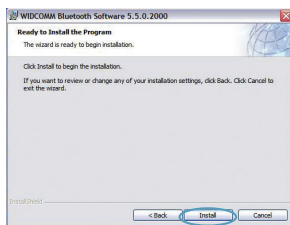


Installation du logiciel

5. Spécifiez l'emplacement où le logiciel doit être installé sur votre disque dur. Nous recommandons l'installation du logiciel dans le répertoire par défaut « C:\Program Files\WIDCOMM\Bluetooth Software\ ». Cliquez sur « Next [Suivant] » pour continuer.



6. Confirmez que le logiciel du périphérique est prêt à être installé, puis cliquez sur « Install [Installer] ».



7. L'assistant d'installation InstallShield débute l'installation du logiciel *Bluetooth* de Belkin. **Cela peut prendre jusqu'à cinq minutes. Veuillez patienter.**



Installation du logiciel

- À un moment ou à un autre pendant l'installation, il est possible que vous soyez invité à insérer l'adaptateur USB. Si votre adaptateur USB n'est pas encore branché à votre ordinateur, insérez-le dans un port USB disponible et cliquez ensuite sur « OK » pour continuer.
- Confirmez l'achèvement de l'installation du logiciel en cliquant sur « Finish [Terminer] ».



Bluetooth

Pour utiliser l'adaptateur USB avec vos périphériques dotés de la technologie *Bluetooth*, vous devrez configurer vos paramètres *Bluetooth* et exécuter l'assistant de sélection de périphérique *Bluetooth*.

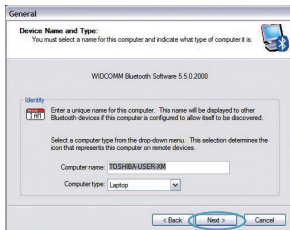
1. Cliquez deux fois sur l'icône « *Bluetooth Places* » sur votre Bureau ou l'icône *Bluetooth* dans la barre des tâches.



2. L'assistant de configuration *Bluetooth* apparaît. Cliquez sur « Next [Suivant] ».



3. Spécifiez un nom pour l'ordinateur, qui apparaîtra sur d'autres périphériques *Bluetooth*, et cliquez sur « Next [Suivant] ».

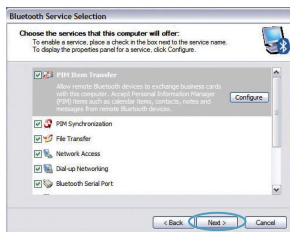


Bluetooth

4. L'assistant de configuration initiale *Bluetooth* apparaît. Cliquez sur « Next [Suivant] ».



5. Choisissez les services *Bluetooth* qui seront disponibles sur votre ordinateur. Nous recommandons les réglages par défaut. Cliquez sur « Next [Suivant] ».



Bluetooth est terminée.

Cliquez sur « Next [Suivant] » pour continuer et connecter vos périphériques dotés de la technologie *Bluetooth*.

Cliquez sur « Skip [Passer] » pour quitter l'assistant de configuration.



Informations

Assistance technique gratuite* *Hors coût de communication nationale

www.belkin.com

Vous trouverez des informations techniques sur le site www.belkin.com dans la zone d'assistance technique. Pour contacter le service d'assistance technique par téléphone, veuillez composer le numéro correspondant dans la liste ci-dessous*.

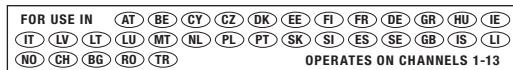
Pays	Numéro	Adresse Internet
AUTRICHE	08 - 20 20 07 66	http://www.belkin.com/uk
BELGIQUE	07 07 00 073	http://www.belkin.com/nl
RÉPUBLIQUE TCHÈQUE	23 900 04 06	http://www.belkin.com/uk
DANEMARK	701 22 403	http://www.belkin.com/uk
FINLANDE	00800 - 22 35 54 60	http://www.belkin.com/uk
FRANCE	08 - 25 54 00 26	http://www.belkin.com/fr
ALLEMAGNE	0180 - 500 57 09	http://www.belkin.com/de
GRÈCE	00800 - 44 14 23 90	http://www.belkin.com/uk
HONGRIE	06 - 17 77 49 06	http://www.belkin.com/uk
ISLANDE	800 8534	http://www.belkin.com/uk
IRLANDE	0818 55 50 06	http://www.belkin.com/uk
ITALIE	02 - 69 43 02 51	http://www.belkin.com/it/support/tech
LUXEMBOURG	34 20 80 8560	http://www.belkin.com/uk
PAYS-BAS	0900 - 040 07 90 0,10 € par minute	http://www.belkin.com/nl
NORVÈGE	815 00 287	http://www.belkin.com/uk
POLOGNE	00800 - 441 17 37	http://www.belkin.com/uk
PORTUGAL	707 200 676	http://www.belkin.com/uk
RUSSIE	495 580 9541	http://www.belkin.com/uk
AFRIQUE DU SUD	0800 - 99 15 21	http://www.belkin.com/uk
ESPAGNE	902 - 02 43 66	http://www.belkin.com/es/support/tech
SUÈDE	07 - 71 40 04 53	http://www.belkin.com/se/support/tech
SUISSE	08 - 48 00 02 19	http://www.belkin.com/uk
ROYAUME-UNI	0845 - 607 77 87	http://www.belkin.com/uk
AUTRES PAYS	+44 - 1933 35 20 00	

Informations

AVIS DE L'UNION EUROPÉENNE

Les appareils Bluetooth F8T016 et F8T017 sont conformes aux exigences de la directive 1995/5/CE et portent la marque CE de leur classe respective.

Ces produits ont été évalués et reconnus conformes aux exigences des normes stipulées dans leur Déclaration de conformité respective.



Restricted Use in Certain Countries.....Class 2 Equipment

For information on product disposal please refer to <http://environmental.belkin.com>



BELKIN®

www.belkin.com

Assistance technique Belkin

Europe : www.belkin.com/support

Belkin Ltd.

Express Business Park, Shipton Way
Rushden, NN10 6GL, Royaume-Uni

+44 (0) 1933 35 2000

+44 (0) 1933 31 2000 Fax

Belkin B.V.

Boeing Avenue 333

1119 PH Schiphol-Rijk, Pays-Bas

+31 (0) 20 654 7300

+31 (0) 20 654 7349 fax

Belkin GmbH

Hanebergstraße 2,

80637 Munich, Allemagne

+49 (0) 89 143405 0

+49 (0) 89 143405 100 Fax

Belkin SAS

130 rue de Silly

92100 Boulogne Billancourt, France

+33 (0) 1 41 03 14 40

+33 (0) 1 41 31 01 72 fax

Belkin Iberia

C/ Anabel Segura, 10 planta baja, Of. 2

28108, Alcobendas, Madrid, Espagne

+34 91 791 23 00

+34 91 490 23 35 fax

© 2008 Belkin International, Inc. Tous droits réservés. Toutes les raisons commerciales sont des marques déposées de leurs fabricants respectifs. Le nom *Bluetooth* et les marques de commerce *Bluetooth* sont propriété de *Bluetooth SIG, Inc.*, et sont utilisés par Belkin International, Inc., sous licence. *Mac*, *Mac OS* et *Apple* sont des marques de commerce d'*Apple Inc.*, enregistrées aux États-Unis et dans d'autres pays. *Windows* et *Windows Vista* sont des marques déposées ou des marques de commerce de *Microsoft Corporation* aux États-Unis et/ou dans d'autres pays.

BELKIN.

Installationsanleitung
Bluetooth® USB-Adapter



EN

FR

DE

NL

ES

IT

PT

SV

GR

CZ

PL

HU

SK

TU

RU

RO

Einleitung

Systemanforderungen für PCs

- PC-kompatibler Computer, Prozessor mit mindestens 200 MHz
- Speicher: Mindestens 64 MB; 128 MB empfohlen
- Eine freie USB-Schnittstelle (1.1 oder 2.0)
- Windows® 98 SE, Me, 2000, XP und Vista®

Systemvoraussetzungen für Mac®

- Eine freie USB-Schnittstelle (1.1 oder 2.0)
- Mac OS® X v10.2 oder höher*

Verpackungsinhalt

- *Bluetooth* USB-Adapter
- CD-ROM mit Installationssoftware und Dokumentation

*Mac OS X Treiber und Software von Apple®

Software-Installation

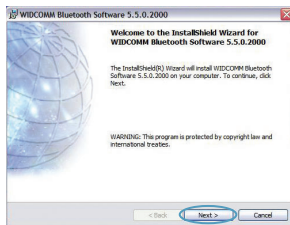
Softwareinstallation unter Windows 98 SE, Me, 2000, XP und Vista

So installieren Sie die Software für den USB-Adapter:

Hinweis: Der Installationsvorgang bei Windows XP oder Windows Vista unterscheidet sich geringfügig von Windows 98 SE, Me und 2000. Diese Anweisungen beziehen sich auf Computer mit dem Betriebssystem Windows XP.

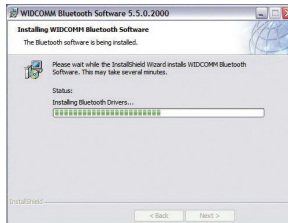
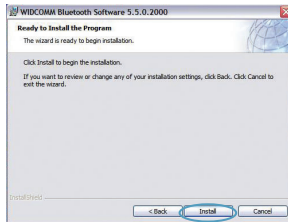
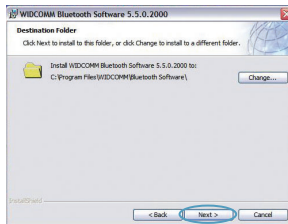
Hinweis: Schließen Sie den USB-Adapter erst nach der Softwareinstallation an die USB-Schnittstelle an.

1. Legen Sie die CD mit der Installationssoftware in das CD-ROM-Laufwerk des PCs ein.
2. Wählen Sie im Menü „install software“ (Software installieren), um die Installation zu starten.
3. Daraufhin erscheint der Softwareinstallations-Assistent. Klicken Sie auf „Next“ (Weiter), um die Installation zu starten.



Software-Installation

4. Wählen Sie die Option „I accept the terms in the license agreement“ (Hiermit nehme ich die Bedingungen der Lizenzvereinbarung an), um die Lizenzvereinbarung anzunehmen. Klicken Sie auf „Next“ (Weiter), um fortzufahren.
5. Legen Sie den Speicherort, wo Sie die Softwaredateien auf der Festplatte installieren möchten, fest. Empfohlen wird das vorgegebene Verzeichnis „C:\Program Files\WIDCOMM\Bluetooth Software“. Klicken Sie auf „Next“ (Weiter), um fortzufahren.
6. Bestätigen Sie den Start der Installation, indem Sie auf „Install“ (Installieren) klicken.



Software-Installation

7. Der Installationsassistent startet die Installation der Belkin *Bluetooth*-Software. **Dies kann bis zu fünf Minuten dauern. Bitte haben Sie Geduld.**



8. Während der Installation werden Sie möglicherweise zum Anschließen des USB-Adapters aufgefordert. Wenn Ihr USB-Adapter noch nicht an Ihren Computer angeschlossen ist, stecken Sie ihn in eine freie USB-Schnittstelle und klicken Sie dann auf „OK“, um fortzufahren.



Bluetooth Konfiguration

Zur Verwendung des USB-Adapters mit Ihren Geräten, die mit *Bluetooth*-Technologie ausgestattet sind, müssen Sie die *Bluetooth*-Einstellungen konfigurieren und den *Bluetooth*-Geräteauswahl-Assistenten ausführen.

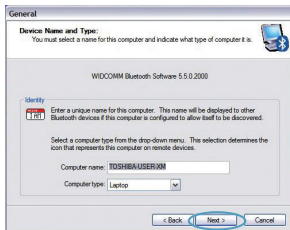
- Bestätigen Sie den Abschluss der Software-Installation und klicken Sie auf „Finish“ (Fertig stellen).



- Klicken Sie doppelt auf das *Bluetooth*-Geräte-Symbol auf dem Desktop oder auf das *Bluetooth*-Symbol im System-Tray.

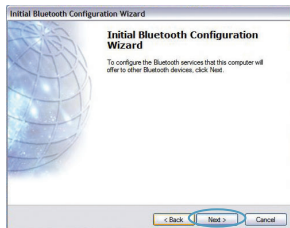


- Der *Bluetooth*-Installationsassistent wird gestartet. Klicken Sie auf „Next“ (Weiter).

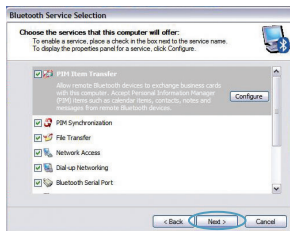


Bluetooth Konfiguration

3. Geben Sie den Computer-Namen an, der bei anderen *Bluetooth*-Geräten angezeigt wird, und klicken Sie auf „Next“ (Weiter).



4. Der *Bluetooth*-Installationsassistent für die Erstinstallation wird geöffnet. Klicken Sie auf „Next“ (Weiter).



5. Wählen Sie die *Bluetooth*-Dienste, die Sie auf Ihrem Computer verwenden wollen, aus. Wir empfehlen Ihnen, die Werkseinstellungen nicht zu verändern und auf „Next“ (Weiter) zu klicken.

Bluetooth-Installation ist damit abgeschlossen.

Klicken Sie auf „Next“ (Weiter), um fortzufahren, und stellen Sie eine Verbindung mit Ihren Geräten her, die mit *Bluetooth*-Technologie ausgestattet sind.

Klicken Sie auf „Skip“ (Überspringen), um den Installationsassistenten abzuschließen.



Informationen

Kostenloser technischer Support* *Zum normalen Telefontarif

www.belkin.com

Technische Informationen und Unterstützung erhalten Sie unter www.belkin.com im Bereich Tech-Support. Wenn Sie den technischen Support telefonisch erreichen wollen, wählen Sie die entsprechende Nummer auf der unten aufgeführten Liste*.

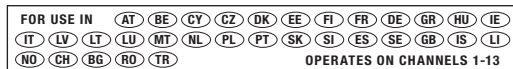
Land	Nummer	Internet-Adresse
ÖSTERREICH	08 - 20 20 07 66	http://www.belkin.com/uk
BELGIEN	07 07 00 073	http://www.belkin.com/nl
TSCHECHISCHE REPUBLIK	23 900 04 06	http://www.belkin.com/uk
DÄNEMARK	701 22 403	http://www.belkin.com/uk
FINNLAND	00800 - 22 35 54 60	http://www.belkin.com/uk
FRANKREICH	08 - 25 54 00 26	http://www.belkin.com/fr
DEUTSCHLAND	0180 - 500 57 09	http://www.belkin.com/de
GRIECHENLAND	00800 - 44 14 23 90	http://www.belkin.com/uk
UNGARN	06 - 17 77 49 06	http://www.belkin.com/uk
ISLAND	800 8534	http://www.belkin.com/uk
IRLAND	0818 55 50 06	http://www.belkin.com/uk
ITALIEN	02 - 69 43 02 51	http://www.belkin.com/it/support/tech
LUXEMBURG	34 20 80 8560	http://www.belkin.com/uk
NIEDERLANDE	0900 - 040 07 90 0,10 € pro Minute	http://www.belkin.com/nl
NORWEGEN	815 00 287	http://www.belkin.com/uk
POLEN	00800 - 441 17 37	http://www.belkin.com/uk
PORTUGAL	707 200 676	http://www.belkin.com/uk
RUSSLAND	495 580 9541	http://www.belkin.com/uk
SÜDAFRIKA	0800 - 99 15 21	http://www.belkin.com/uk
SPANIEN	902 - 02 43 66	http://www.belkin.com/es/support/tech
SCHWEDEN	07 - 71 40 04 53	http://www.belkin.com/se/support/tech
SCHWEIZ	08 - 48 00 02 19	http://www.belkin.com/uk
GROSSBRITANNIEN	0845 - 607 77 87	http://www.belkin.com/uk
SONSTIGE LÄNDER	+44 - 1933 35 20 00	

Informationen

EU-HINWEIS

Die Bluetooth-Geräte F8T016 und F8T017 entsprechen den Anforderungen der EG-Richtlinie 1995/5/EC und sind entsprechend ihrer Klassifikation mit einem CE-Zeichen versehen.

Diese Produkte werden geprüft und entsprechen den Standards, die in der jeweiligen Konformitätserklärung aufgeführt werden.



Restricted Use in Certain Countries.....Class 2 Equipment

For information on product disposal please refer to <http://environmental.belkin.com>



BELKIN®

www.belkin.com

Belkin Technischer Support

Europa: www.belkin.com/support

Belkin Ltd.

Express Business Park, Shipton Way
Rushden, NN10 6GL, Großbritannien

+44 (0) 1933 35 2000

+44 (0) 1933 31 2000 Fax

Belkin B.V.

Boeing Avenue 333

1119 PH Schiphol-Rijk, Niederlande

+31 (0) 20 654 7300

+31 (0) 20 654 7349 Fax

Belkin GmbH

Hanebergstraße 2,

80637 München, Deutschland

+49 (0) 89 143405 0

+49 (0) 89 143405 100 Fax

Belkin SAS

130 rue de Silly

92100 Boulogne Billancourt, Frankreich

+33 (0) 1 41 03 14 40

+33 (0) 1 41 31 01 72 Fax

Belkin Iberia

C/ Anabel Segura, 10 planta baja, Of. 2

28108, Alcobendas, Madrid, Spanien

+34 91 791 23 00

+34 91 490 23 35 Fax

© 2008 Belkin International, Inc. Alle Rechte vorbehalten. Alle Produktnamen sind eingetragene Marken der angegebenen Hersteller. Die Bezeichnung *Bluetooth* und die *Bluetooth*-Marken sind Eigentum von *Bluetooth SIG, Inc.*; Verwendung durch Belkin International, Inc. unter Lizenz. Mac, Mac OS und Apple sind Marken der Apple Inc., die in den USA und anderen Ländern eingetragen sind. Windows und Windows Vista sind in den Vereinigten Staaten und/oder in anderen Ländern eingetragene Marken bzw. Marken der Microsoft Corporation.

BELKIN.

Beknopte installatiehandleiding

Bluetooth® USB-adapter



EN

FR

DE

NL

ES

IT

PT

SV

GR

CZ

PL

HU

SK

TU

RU

RO

Inleiding

Systeemvereisten voor de pc

- PC-compatible computer met een processorsnelheid van 200 MHz of hoger
- Geheugen: 64 MB of meer, 128 MB aanbevolen
- Vrije USB-poort conform USB 1.1 of 2.0
- Windows® 98 SE, Me, 2000, XP of Vista®

Systeemvereisten voor Mac®-computers

- Vrije USB-poort conform USB 1.1 of 2.0
- Mac OS® X v10.2 of hoger*

Inhoud van de verpakking

- *Bluetooth* USB-adapter
- Cd-rom met installatiesoftware en documentatie

*Stuurprogramma en software voor Mac OS X worden geleverd door Apple®

Software installeren

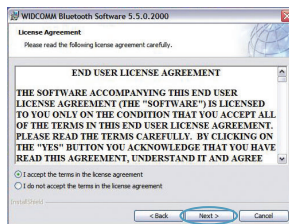
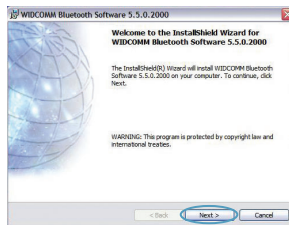
Software installeren onder Windows 98 SE, Me, 2000, XP en Vista

U installeert de software voor de USB-adapter als volgt:

Let op: het installatieproces van Windows XP of Vista kan iets afwijken van die van Windows 98 SE, Me en 2000. Deze instructies zijn gebaseerd op een Windows XP-computer.

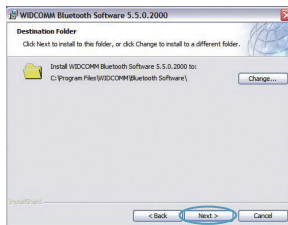
Let op: Sluit de USB-adapter pas aan op de USB-poort als u de software hebt geïnstalleerd.

1. Plaats de software-cd in het cd-romstation van de pc.
2. Selecteer "install software" (software installeren) in het menu om de installatie te starten.
3. Het venster "Software InstallShield Wizard" verschijnt. Klik op "Next" (Volgende) om de installatie te starten.
4. Kies "I accept the terms in the license agreement" (Ik accepteer de voorwaarden van de licentieovereenkomst) als u met de licentieovereenkomst akkoord gaat. Klik op "Next" (Volgende) om door te gaan.

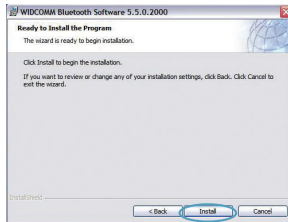


Software installeren

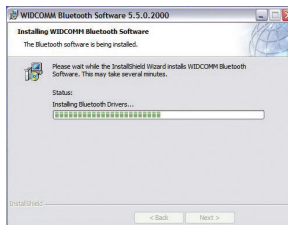
5. Geef aan op welke locatie u de softwarebestanden op uw harde schijf wilt installeren. Wij adviseren u de software te installeren in de standaard-directory "C:\Program Files\WIDCOMM\Bluetooth Software". Klik op "Next" (Volgende) om door te gaan.



6. Bevestig dat de software geïnstalleerd kan worden en klik op "Install".



7. De InstallShield Wizard begint met het installeren van de *Bluetooth*-software van Belkin. **Dit kan ongeveer vijf minuten duren.**



Software installeren

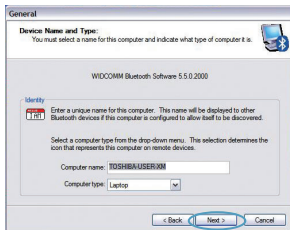
8. Tijdens de installatie kan de computer u vragen uw USB-adapter aan te sluiten. Als u de USB-adapter op dat moment nog niet op uw computer hebt aangesloten, sluit hem dan aan op een vrije USB-poort en klik op "OK" om door te gaan.
9. Klik op "Finish" (Beëindigen) als de software-installatie is afgerond.



Bluetooth-configuratie

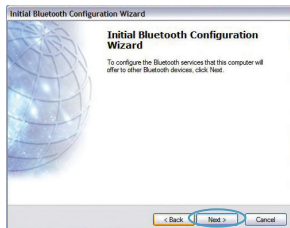
Om een verbinding tot stand te kunnen brengen tussen de USB-adapter en uw andere *Bluetooth*-apparaten dient u de *Bluetooth*-instellingen te configureren en de *Bluetooth Device Selection wizard* (wizard voor apparaatkeuze) uit te voeren.

1. Dubbelklik op het pictogram "*Bluetooth Places*" (Bluetooth Plaatsen) op uw bureaublad of op het *Bluetooth*-pictogram in de systeembalk.
2. De *Bluetooth*-configuratie wizard zal verschijnen. Klik op "Next" (Volgende).
3. Geef aan welke naam het apparaat moet krijgen. Deze naam is de naam die zichtbaar zal zijn voor andere *Bluetooth*-apparaten. Klik vervolgens op "Next" (Volgende).

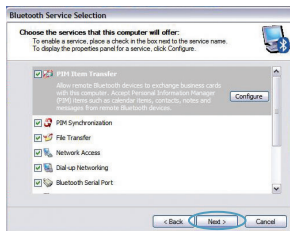


Bluetooth-configuratie

4. De *Bluetooth*-configuratiewizard zal verschijnen. Klik op “Next” (Volgende).



5. Kies de *Bluetooth*-diensten waarvan u op uw computer gebruik wilt kunnen maken. Wij raden u aan gebruik te maken van de standaard instellingen. Klik vervolgens op "Next" (Volgende).



De *Bluetooth*-instellingen zijn nu geconfigureerd.

Klik op “Next” (Volgende) om verder te gaan en maak verbinding met andere apparaten die zijn voorzien van *Bluetooth*-technologie.

Klik op “Skip” (Overslaan) om de configuratiewizard te sluiten.



Informatie

Gratis technische ondersteuning (lokaal tarief)

www.belkin.com

Aanvullende informatie over technische ondersteuning is beschikbaar op www.belkin.com onder "Ondersteuning". Indien u telefonisch contact wilt opnemen met onze afdeling voor technische ondersteuning, kunt u gebruik maken van het voor u van toepassing zijnde telefoonnummer uit onderstaande lijst.

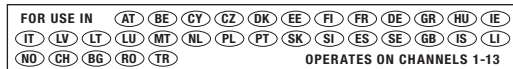
Land	Telefoonnummer	Internetadres
OOSTENRIJK	08 - 20 20 07 66	http://www.belkin.com/uk
BELGIË	07 07 00 073	http://www.belkin.com/nl
TSJECHIË	23 900 04 06	http://www.belkin.com/uk
DENEMARKEN	701 22 403	http://www.belkin.com/uk
FINLAND	00800 - 22 35 54 60	http://www.belkin.com/uk
FRANKRIJK	08 - 25 54 00 26	http://www.belkin.com/fr
DUIZSLAND	0180 - 500 57 09	http://www.belkin.com/de
GRIEKENLAND	00800 - 44 14 23 90	http://www.belkin.com/uk
HONGARIJE	06 - 17 77 49 06	http://www.belkin.com/uk
IJSLAND	800 8534	http://www.belkin.com/uk
IERLAND	0818 55 50 06	http://www.belkin.com/uk
ITALIË	02 - 69 43 02 51	http://www.belkin.com/it/support/tech
LUXEMBURG	34 20 80 8560	http://www.belkin.com/uk
NEDERLAND	0900 - 040 07 90 € 0,10 per minuut	http://www.belkin.com/nl
NOORWEGEN	815 00 287	http://www.belkin.com/uk
POLEN	00800 - 441 17 37	http://www.belkin.com/uk
PORTUGAL	707 200 676	http://www.belkin.com/uk
RUSLAND	495 580 9541	http://www.belkin.com/uk
ZUID-AFRIKA	0800 - 99 15 21	http://www.belkin.com/uk
SPANJE	902 - 02 43 66	http://www.belkin.com/es/support/tech
ZWEDEN	07 - 71 40 04 53	http://www.belkin.com/se/support/tech
ZWITSERLAND	08 - 48 00 02 19	http://www.belkin.com/uk
VERENIGD KONINKRIJK	0845 - 607 77 87	http://www.belkin.com/uk
ANDERE LANDEN	+44 - 1933 35 20 00	

Informatie

KENNISGEVING EUROPESE UNIE

De Bluetooth-apparaten met artikelnummers F8T016 en F8T017 voldoen aan de EC-richtlijn 1995/5/EC en zijn voorzien van de CE-markering die overeenstemt met hun classificatie.

Deze producten zijn grondig getest en voldoen aan de normen die zijn opgenomen in hun respectieve verklaringen van conformiteit.



Restricted Use in Certain Countries.....Class 2 Equipment



For information on product disposal please refer to <http://environmental.belkin.com>

BELKIN®

www.belkin.com

Technische ondersteuning

Europa: www.belkin.com/support

Belkin Ltd.

Express Business Park, Shipton Way
Rushden, NN10 6GL, Groot-Brittannië
+44 (0) 1933 35 2000
+44 (0) 1933 31 2000 fax

Belkin B.V.

Boeing Avenue 333
1119 PH Schiphol-Rijk, Nederland
+31 (0) 20 654 7300
+31 (0) 20 654 7349 fax

Belkin GmbH

Hanebergstraße 2
80637 München, Duitsland
+49 (0) 89 143405 0
+49 (0) 89 143405 100 fax

Belkin SAS

130 rue de Silly
92100 Boulogne Billancourt, Frankrijk
+33 (0) 1 41 03 14 40
+33 (0) 1 41 31 01 72 fax

Belkin Iberia

C/ Anabel Segura, 10 planta baja, Of. 2
28108, Alcobendas, Madrid, Spanje
+34 91 791 23 00
+34 91 490 23 35 fax

© 2008 Belkin International, Inc. Alle rechten voorbehouden. Alle handelsnamen zijn gedeponeerde handelsmerken van de betreffende rechthebbenden. De naam *Bluetooth* en de *Bluetooth*-handelsmerken zijn eigendom van *Bluetooth SIG, Inc.* en worden door Belkin International, Inc. in licentie gebruikt. Mac, Mac OS en Apple zijn handelsmerken van Apple Inc., die gedeponeerd zijn in de Verenigde Staten en andere landen. Windows en Windows Vista zijn in de Verenigde Staten en/of andere landen gedeponeerde handelsmerken of handelsmerken van Microsoft Corporation.

BELKIN.

Guía de instalación rápida
Adaptador Bluetooth® USB



EN

FR

DE

NL

ES

IT

PT

SV

GR

CZ

PL

HU

SK

TU

RU

RO

Introducción

Requisitos del sistema para PC

- Ordenador compatible con PC, velocidad de la CPU de 200MHz o superior
- Memoria: 64MB o superior, 128MB recomendado
- Un puerto USB 1.1 o 2.0 disponible
- Compatible con Windows® 98 SE, Me, 2000, XP, y Vista®

Mac®: Requisitos del sistema

- Un puerto USB 1.1 o 2.0 disponible
- Mac OS® X v10.2 o superior*

Contenidos del producto

- Adaptador USB *Bluetooth*
- CD-ROM con software de instalación y documentación

*Driver y software para el sistema operativo Mac X proporcionados por Apple®

Instalación del software

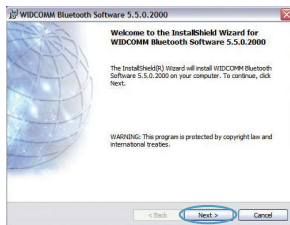
Instalación de software para Windows 98 SE, Me, 200, XP y Vista

Para instalar el software para el Adaptador USB, siga las instrucciones presentadas a continuación.

Nota: El proceso de instalación para Windows XP o Windows Vista puede ser ligeramente diferente al de Windows 98 SE, Me y 2000. Estas instrucciones se basan en un ordenador con Windows XP.

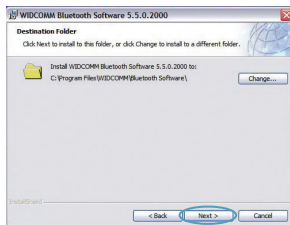
Nota: No inserte el adaptador para USB en el puerto USB antes de proceder a la instalación del software.

1. Inserte el CD-ROM de instalación del software en la unidad de CD-ROM de su PC.
2. Seleccione "Install software" (Instalar el software) en el menú para comenzar la instalación.
3. Aparecerá la ventana de "Software InstallShield Wizard" (Asistente de software InstallShield). Haga clic en "Next" (Siguiente) para comenzar el proceso de instalación.

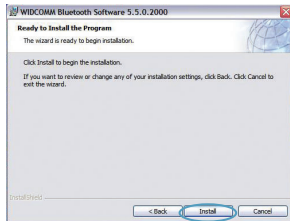


Instalación del software

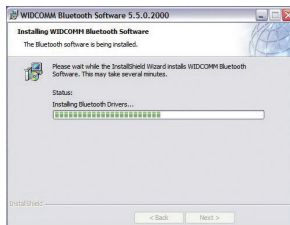
4. Seleccione “I accept the terms in the license agreement” (Acepto las condiciones del acuerdo de licencia) para aceptar el acuerdo de licencia. Haga clic sobre “Next” (Siguiente) para continuar.



5. Especifique la ubicación en la que se van a instalar los archivos del software en su disco duro. Se recomienda la instalación del software en el directorio por defecto “C:\Program Files\WIDCOMM\Bluetooth Software” (“C:\Archivos de programa\WIDCOMM\Bluetooth Software”). Haga clic sobre “Next” (Siguiente) para continuar.



6. Confirme que el software del dispositivo esté listo para ser instalado y haga clic en “Install” (Instalar).

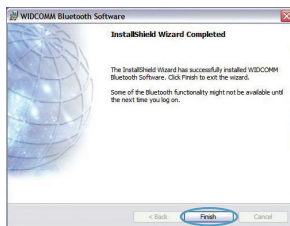


Instalación del software

7. El Asistente de InstallShield comenzará a instalar el software *Bluetooth* de Belkin. **Esto puede tardar hasta cinco minutos, por favor, espere.**



8. Durante el proceso de instalación, es posible que se le solicite insertar su Adaptador USB. Si su adaptador USB no está conectado a su ordenador en este momento, puede conectarlo al puerto USB que desee y hacer clic sobre "OK" (Aceptar) para continuar.



Configuración Bluetooth

Para empezar a utilizar el adaptador USB con los dispositivos con tecnología *Bluetooth*, tendrá que configurar los ajustes de *Bluetooth* y ejecutar el Asistente de selección de dispositivo *Bluetooth*.

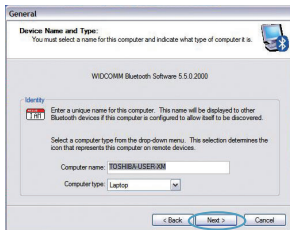
9. Confirme que ha finalizado la instalación del software y haga clic en "Finish" (Finalizar).



1. Haga doble clic sobre el icono Sitios *Bluetooth* de la pantalla de su escritorio o sobre el icono *Bluetooth* de la bandeja de sistema.

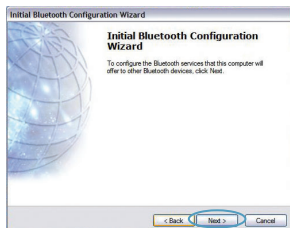


2. Aparecerá el Asistente de configuración para *Bluetooth*. Haga clic en "Siguiente".

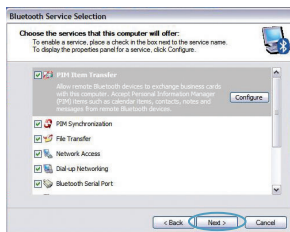


Configuración Bluetooth

3. Especifique el nombre del ordenador que aparecerá en los otros dispositivos *Bluetooth* y haga clic sobre "Next"(Siguiente).



4. Aparecerá el Asistente de configuración para *Bluetooth.inicial*. Haga clic en "Siguiente".



5. Escoja los servicios de *Bluetooth* que quiera tener disponibles en su ordenador. Recomendamos mantener los ajustes por defecto y hacer clic sobre "Next" (Siguiente).

Bluetooth se ha completado.

Haga clic sobre "Next" (Siguiente) para continuar y conectarse a los dispositivos con tecnología *Bluetooth*.

Haga clic en "Skip" (Saltar) para cerrar el asistente de configuración.



Información

Asistencia técnica gratuita* *Pueden aplicarse tarifas de llamada nacional

www.belkin.com

Podrá encontrar más información en nuestra página web www.belkin.com a través del-servicio de asistencia técnica. Si desea ponerse en contacto con el servicio de asistencia técnica por teléfono, le rogamos que llame al número correspondiente de la siguiente lista*.

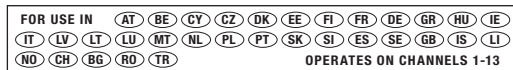
País	Número	Dirección de Internet
AUSTRIA	08 - 20 20 07 66	http://www.belkin.com/uk
BÉLGICA	07 07 00 073	http://www.belkin.com/nl
REPÚBLICA CHECA	23 900 04 06	http://www.belkin.com/uk
DINAMARCA	701 22 403	http://www.belkin.com/uk
FINLANDIA	00800 - 22 35 54 60	http://www.belkin.com/uk
FRANCIA	08 - 25 54 00 26	http://www.belkin.com/fr
ALEMANIA	0180 - 500 57 09	http://www.belkin.com/de
GRECIA	00800 - 44 14 23 90	http://www.belkin.com/uk
HUNGRÍA	06 - 17 77 49 06	http://www.belkin.com/uk
ISLANDIA	800 8534	http://www.belkin.com/uk
IRLANDA	0818 55 50 06	http://www.belkin.com/uk
ITALIA	02 - 69 43 02 51	http://www.belkin.com/it/support/tech
LUXEMBURGO	34 20 80 8560	http://www.belkin.com/uk
PAÍSES BAJOS	0900 - 040 07 90 €0.10 por minuto	http://www.belkin.com/nl
NORUEGA	815 00 287	http://www.belkin.com/uk
POLONIA	00800 - 441 17 37	http://www.belkin.com/uk
PORTUGAL	707 200 676	http://www.belkin.com/uk
RUSIA	495 580 9541	http://www.belkin.com/uk
SUDÁFRICA	0800 - 99 15 21	http://www.belkin.com/uk
ESPAÑA	902 - 02 43 66	http://www.belkin.com/es/support/tech
SUECIA	07 - 71 40 04 53	http://www.belkin.com/se/support/tech
SUIZA	08 - 48 00 02 19	http://www.belkin.com/uk
REINO UNIDO	0845 - 607 77 87	http://www.belkin.com/uk
OTROS PAÍSES	+44 - 1933 35 20 00	

Información

NOTIFICACIÓN DE LA UE

Los dispositivos Bluetooth F8T016 y F8T017 cumplen con los requisitos de la Directiva de la CE 1995/5/EC y están identificados como CE según su clasificación.

Se ha comprobado que estos productos cumplen con los requisitos de los estándares que se muestran en sus respectivas Declaraciones de Conformidad.



Restricted Use in Certain Countries.....Class 2 Equipment

For information on product disposal please refer to <http://environmental.belkin.com>



BELKIN®

www.belkin.com

Asistencia técnica de Belkin

Europa: www.belkin.com/support

Belkin Ltd.

Express Business Park, Shipton Way
Rushden, NN10 6GL, Reino Unido

+44 (0) 1933 35 2000

+44 (0) 1933 31 2000 fax

Belkin B.V.

Boeing Avenue 333

1119 PH Schiphol-Rijk (Países Bajos)

+31 (0) 20 654 7300

+31 (0) 20 654 7349 fax

Belkin GmbH

Hanebergstraße 2,

80637 Múnich (Alemania)

+49 (0) 89 143405 0

+49 (0) 89 143405 100 fax

Belkin SAS

130 rue de Silly

92100 Boulogne-Billancourt (Francia)

+33 (0) 1 41 03 14 40

+33 (0) 1 41 31 01 72 fax

Belkin Iberia

C/ Anabel Segura, 10 planta baja, Of. 2

28108, Alcobendas, Madrid, España

+34 91 791 23 00

+34 91 490 23 35 fax.

© 2008 Belkin International, Inc. Todos los derechos reservados. Todos los nombres comerciales son marcas registradas de los respectivos fabricantes mencionados. El nombre *Bluetooth* y las marcas registradas de *Bluetooth* son propiedad de *Bluetooth SIG, Inc.*, y Belkin International, Inc. las emplea bajo licencia. *Mac*, *Mac OS* y *Apple* son marcas registradas de *Apple Inc.*, registrado en EE.UU. y otros países. *Windows* y *Windows Vista* son marcas registradas o marcas de *Microsoft Corporation* registradas en Estados Unidos u otros países.

BELKIN.

Guida di installazione rapida

Adattatore USB Bluetooth



EN

FR

DE

NL

ES

IT

PT

SV

GR

CZ

PL

HU

SK

TU

RU

RO

Introduzione

Requisiti di sistema per PC

- Computer PC compatibile e CPU con una velocità da 200 MHz e superiore
- Memoria: 64 MB o superiore, 128 MB consigliata
- Una porta USB disponibile, USB 1.1 o 2.0
- Windows® 98 SE, Me, 2000, XP e Vista®

Requisiti di sistema per Mac*

- Una porta USB disponibile, USB 1.1 o 2.0
- Mac OS® X v10.2 o successive*

Contenuto della confezione

- Adattatore USB *Bluetooth*
- CD-ROM per l'installazione del software e documentazione

Driver e software per Mac OS X sono forniti dalla Apple

Installazione del software

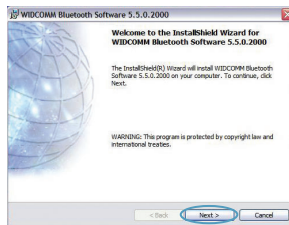
Installazione del software per Windows 98 SE, Me, 2000, XP e Vista

Per installare il software per l'adattatore USB, seguire le istruzioni indicate di seguito:

Nota bene: il processo di installazione per Windows XP o Windows Vista potrebbe risultare leggermente diverso da Windows 98 SE, Me e 2000. Queste istruzioni si riferiscono a un computer Windows XP.

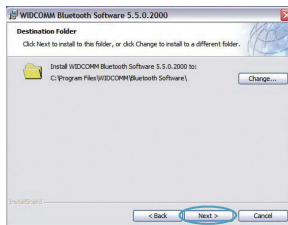
Nota bene: non inserire l'adattatore USB nella porta USB prima di eseguire l'installazione del software.

1. Inserire il CD-ROM di installazione del software nel lettore CD-ROM.
2. Per iniziare l'installazione, selezionare "install software" (installa il software) dal menu.
3. Compare la finestra "Software InstallShield Wizard" (Installazione guidata del software); fare clic su "Next" (Avanti) per avviare il processo di installazione.

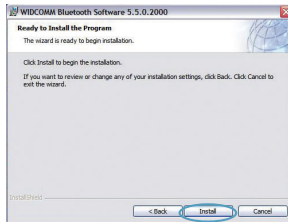


Installazione del software

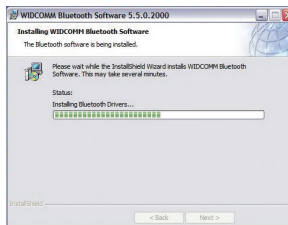
4. Scegliere "I accept the terms in the license agreement"(Accetto le condizioni nel contratto di licenza) per confermare l'adesione al contratto. Fare clic su "Next" (Avanti) per continuare.



5. Specificare la destinazione nella quale i file del software saranno installati sul proprio disco fisso. È consigliabile installare il software nella directory predefinita "C:\Program Files\WIDCOMM\Bluetooth Software\". Fare clic su "Next" (Avanti) per continuare.



6. Confermare che il software della periferica è pronto per essere installato e fare clic su "Install" (Installa).



Installazione del software

7. Il programma di installazione guidata InstallShield Wizard inizierà l'installazione del Software Bluetooth Belkin. Tale processo potrebbe richiedere fino a cinque minuti, attendere.



8. Durante il processo di installazione vi potrebbe essere richiesto di inserire l'adattatore USB. Se l'adattatore USB non fosse stato ancora collegato al computer, lo si potrà inserire nella porta USB e fare quindi clic su "OK" per continuare.

9. Confermare il completamento dell'installazione del software e fare clic su "Finish" (Fine).



Bluetooth

Per poter iniziare ad usare dei dispositivi dotati della tecnologia *Bluetooth* bisogna configurare le impostazioni *Bluetooth* ed eseguire il programma per la selezione del dispositivo *Bluetooth*.

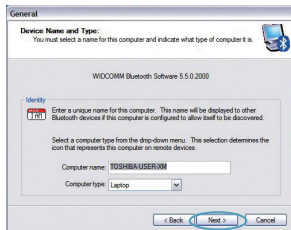
1. Fare doppio clic sull'icona Risorse *Bluetooth* nel desktop o sull'icona *Bluetooth* nella barra delle applicazioni.



2. Viene visualizzato il programma di configurazione *Bluetooth*. Fare clic su "Next" (Avanti).

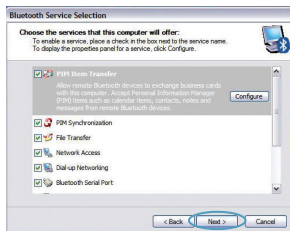
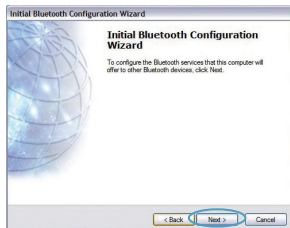


3. Indicare il nome del computer così come verrà visualizzato ad altri dispositivi *Bluetooth* e fare clic su "Next" (Avanti).



Bluetooth

- Viene visualizzato il programma di configurazione guidata iniziale *Bluetooth*. Fare clic su “Next” (Avanti).
- Selezionare i servizi *Bluetooth* che si vuole avere disponibile sul proprio computer. È consigliabile lasciare le impostazioni predefinite e fare clic su “Next” (Avanti).



Bluetooth è completa.

Fare clic su “Next” (Avanti) per continuare e collegare i dispositivi dotati della tecnologia *Bluetooth*.

Fare clic su “Skip” (Ignora) per chiudere il programma di configurazione.



Informazioni

Assistenza tecnica gratuita* *Si applica solo la tariffa della chiamata locale

www.belkin.com

Per maggiori informazioni sull'assistenza tecnica, visitare il nostro sito web www.belkin.com nell'area assistenza - tecnica. Per contattare telefonicamente il servizio di assistenza tecnica, chiamare uno dei seguenti numeri*.

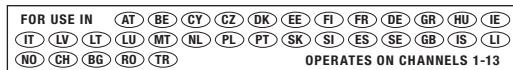
Paese	Numero	Indirizzo Internet
AUSTRIA	08 - 20 20 07 66	http://www.belkin.com/uk
BELGIO	07 07 00 073	http://www.belkin.com/nl
REPUBBLICA CECA	23 900 04 06	http://www.belkin.com/uk
DANIMARCA	701 22 403	http://www.belkin.com/uk
FINLANDIA	00800 - 22 35 54 60	http://www.belkin.com/uk
FRANCIA	08 - 25 54 00 26	http://www.belkin.com/fr
GERMANIA	0180 - 500 57 09	http://www.belkin.com/de
GRECIA	00800 - 44 14 23 90	http://www.belkin.com/uk
UNGHERIA	06 - 17 77 49 06	http://www.belkin.com/uk
ISLANDA	800 8534	http://www.belkin.com/uk
IRLANDA	0818 55 50 06	http://www.belkin.com/uk
ITALIA	02 - 69 43 02 51	http://www.belkin.com/it/support/tech
LUSSEMBURGO	34 20 80 8560	http://www.belkin.com/uk
PAESI BASSI	0900 - 040 07 90 €0,10 al minuto	http://www.belkin.com/nl
NORVEGIA	815 00 287	http://www.belkin.com/uk
POLONIA	00800 - 441 17 37	http://www.belkin.com/uk
PORTOGALLO	707 200 676	http://www.belkin.com/uk
RUSSIA	495 580 9541	http://www.belkin.com/uk
SUDAFRICA	0800 - 99 15 21	http://www.belkin.com/uk
SPAGNA	902 - 02 43 66	http://www.belkin.com/es/support/tech
SVEZIA	07 - 71 40 04 53	http://www.belkin.com/se/support/tech
SVIZZERA	08 - 48 00 02 19	http://www.belkin.com/uk
REGNO UNITO	0845 - 607 77 87	http://www.belkin.com/uk
ALTRI PAESI	+44 - 1933 35 20 00	

Informazioni

COMUNICAZIONE UE

Le apparecchiature Bluetooth F8T016 e F8T017 rispondono pienamente ai requisiti della Direttiva CE 1995/5 e riportano il marchio CE in conformità alla loro classificazione.

Tali prodotti sono stati testati al fine di conformarsi agli standard evidenziati nelle rispettive Dichiarazioni di Conformità.



Restricted Use in Certain Countries.....Class 2 Equipment

For information on product disposal please refer to <http://environmental.belkin.com>



BELKIN®

www.belkin.com

Assistenza tecnica Belkin

Europa: www.belkin.com/support

Belkin Ltd.

Express Business Park, Shipton Way
Rushden, NN10 6GL, Regno Unito

+44 (0) 1933 35 2000

+44 (0) 1933 31 2000 fax

Belkin B.V.

Boeing Avenue 333

1119 PH Schiphol-Rijk, Paesi Bassi

+31 (0) 20 654 7300

+31 (0) 20 654 7349 fax

Belkin GmbH

Hanebergstraße 2,

80637 Monaco di Baviera, Germania

+49 (0) 89 143405 0

+49 (0) 89 143405 100 fax

Belkin SAS

130 rue de Silly

92100 Boulogne-Billancourt, Francia

+33 (0) 1 41 03 14 40

+33 (0) 1 41 31 01 72 fax

Belkin Iberia

C/ Anabel Segura, 10 planta baja, Of. 2

28108, Alcobendas, Madrid, Spagna

+34 91 791 23 00

+34 91 490 23 35 fax

© 2008 Belkin International, Inc. Tutti i diritti riservati. Tutti i nomi commerciali sono marchi registrati dei rispettivi produttori indicati. Il nome *Bluetooth* e i marchi commerciali *Bluetooth* sono di proprietà della *Bluetooth SIG, Inc.* e sono utilizzati da Belkin International, Inc. su concessione di licenza. *Mac*, *Mac OS* e *Apple* sono marchi della *Apple Inc.*, registrati negli USA e in altri Paesi. *Windows* e *Windows Vista* sono marchi commerciali o marchi registrati della *Microsoft Corporation* negli Stati Uniti e/o in altri Paesi.

BELKIN.

Guia de instalação rápida
Adaptador USB Bluetooth



EN

FR

DE

NL

ES

IT

PT

SV

GR

CZ

PL

HU

SK

TU

RU

RO

Introdução

Requisitos do sistema PC

- Computador compatível PC, velocidade do CPU de 200 MHz ou superior
- Memória: 64 MB ou superior, recomendados 128 MB
- Uma porta USB disponível, USB 1.1 ou 2.0
- Windows® 98 SE, Me, 2000, XP e Vista®

Requisitos do sistema Mac®

- Uma porta USB disponível, USB 1.1 ou 2.0
- Mac OS® X v10.2 ou superior*

Conteúdo

- *Adaptador USB Bluetooth*
- CD-ROM para o software de instalação e documentação

*Controlador Mac OS X e software fornecido pela Apple®

Configuração do software

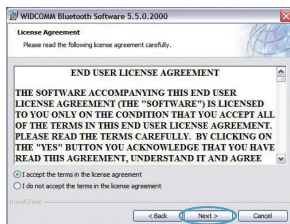
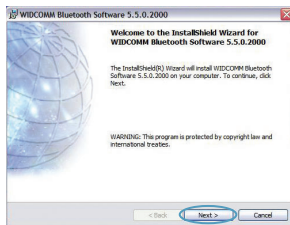
Configuração do software para Windows 98 SE, Me, 2000, XP e Vista

Para instalar o software para o adaptador USB, siga as instruções em baixo:

Nota: O processo de instalação para Windows XP ou Windows Vista pode parecer ligeiramente diferente do Windows 98 SE, Me e 2000. Estas instruções têm como base um computador com o Windows XP.

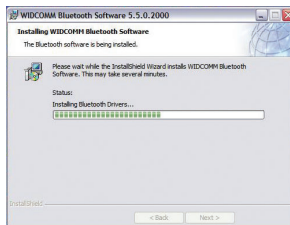
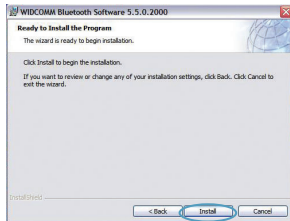
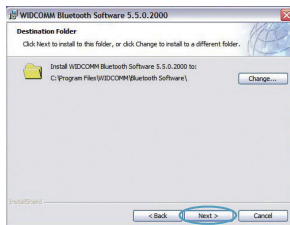
Nota: Não insira o adaptador USB na porta USB antes da instalação do software.

1. Insira o CD-ROM de instalação do software na drive de CD-ROM do computador.
2. No menu seleccione "instalar software" para iniciar a instalação.
3. Surge a janela do "Assistente InstallShield do Software". Faça clique sobre "Seguinte" para iniciar o processo de instalação.
4. Escolha "Aceito os termos do contrato de licença" para aceitar o contrato de licença. Faça clique sobre "Seguinte" para prosseguir.



Configuração do software

5. Especifique o local onde os ficheiros do software serão instalados no seu disco rígido. Recomendamos que instale o software na directoria predefinida "C:\Program Files\WIDCOMM\Bluetooth Software\". Faça clique sobre "Seguinte" para prosseguir.
6. Confirme se o software do dispositivo está pronto para ser instalado e faça clique sobre "Instalar".
7. O Assistente InstallShield irá começar a instalar o software *Bluetooth* da Belkin. **Isto pode demorar até cinco minutos, aguarde.**



Configuração do software

8. Durante o processo de instalação, pode ser solicitada a introdução do adaptador USB. Se o adaptador USB não estiver ligado ao computador nesta altura, pode ligá-lo à porta USB pretendida e, de seguida, faça clique sobre "OK" para continuar.
9. Confirme o fim da instalação do software e faça clique sobre "Concluir".



Configuração Bluetooth

Para começar a usar o adaptador USB com dispositivos que possuem tecnologia *Bluetooth*, terá de configurar as definições *Bluetooth* e executar o Assistente de Seleção de Dispositivos *Bluetooth*.

1. Faça duplo clique sobre o ícone Meus locais *Bluetooth* que se encontra no ambiente de trabalho ou sobre o ícone *Bluetooth* na bandeja do sistema.



2. Surgirá o Assistente de Configuração *Bluetooth*. Clique em "Seguinte".



3. Especifique o nome do computador que será disponibilizado para outros dispositivos *Bluetooth* e clique em "Seguinte".

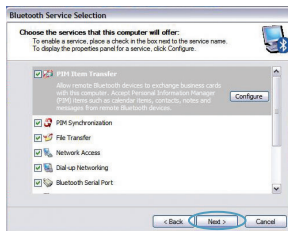


Configuração Bluetooth

4. Surgirá o Assistente de Configuração Inicial *Bluetooth*. Clique em "Seguinte".



5. Selecione os serviços *Bluetooth* que pretende ter disponíveis no seu computador. Recomendamos que deixe as definições por defeito e clique em "Seguinte".



Bluetooth está agora concluída.

Clique em "Seguinte" para continuar e ligar-se aos dispositivos com tecnologia *Bluetooth*.

Faça clique sobre "Ignorar" para fechar o Assistente de Configuração.



Informações

Apoio técnico gratuito* *Poderão ser aplicados os preços das chamadas nacionais

www.belkin.com

Pode obter mais informações no nosso site www.belkin.com na área de apoio -técnico. Se pretender entrar em contacto telefónico com o serviço de apoio técnico, ligue para o número correspondente na lista em baixo*.

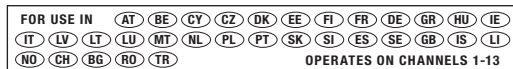
País	Número	Endereço na Internet
ÁUSTRIA	08 - 20 20 07 66	http://www.belkin.com/uk
BÉLGICA	07 07 00 073	http://www.belkin.com/nl
REPÚBLICA CHECA	23 900 04 06	http://www.belkin.com/uk
DINAMARCA	701 22 403	http://www.belkin.com/uk
FINLÂNDIA	00800 - 22 35 54 60	http://www.belkin.com/uk
FRANÇA	08 - 25 54 00 26	http://www.belkin.com/fr
ALEMANHA	0180 - 500 57 09	http://www.belkin.com/de
GRÉCIA	00800 - 44 14 23 90	http://www.belkin.com/uk
HUNGRIA	06 - 17 77 49 06	http://www.belkin.com/uk
ISLÂNDIA	800 8534	http://www.belkin.com/uk
IRLÂNDIA	0818 55 50 06	http://www.belkin.com/uk
ITALIA	02 - 69 43 02 51	http://www.belkin.com/it/support/tech
LUXEMBURGO	34 20 80 8560	http://www.belkin.com/uk
PAÍSES BAIXOS	0900 - 040 07 90 €0,10 por minuto	http://www.belkin.com/nl
NORUEGA	815 00 287	http://www.belkin.com/uk
POLÓNIA	00800 - 441 17 37	http://www.belkin.com/uk
PORTUGAL	707 200 676	http://www.belkin.com/uk
RÚSSIA	495 580 9541	http://www.belkin.com/uk
ÁFRICA DO SUL	0800 - 99 15 21	http://www.belkin.com/uk
ESPAÑA	902 - 02 43 66	http://www.belkin.com/es/support/tech
SUECIA	07 - 71 40 04 53	http://www.belkin.com/se/support/tech
SUIÇA	08 - 48 00 02 19	http://www.belkin.com/uk
REINO UNIDO	0845 - 607 77 87	http://www.belkin.com/uk
OUTROS PAÍSES	+44 - 1933 35 20 00	

Informações

AVISO PARA A UE

Os aparelhos Bluetooth F8T016 e F8T017 estão em conformidade com os requisitos da Directiva 1995/5/CE e têm aposta a marca CE de acordo com a respectiva classificação.

Estes produtos foram testados e cumprem os requisitos das normas indicadas nas Declarações de Conformidade correspondentes.



Restricted Use in Certain Countries.....Class 2 Equipment

For information on product disposal please refer to <http://environmental.belkin.com>



BELKIN®

www.belkin.com

Apoio técnico da Belkin

Europa: www.belkin.com/support

Belkin Ltd.

Express Business Park, Shipton Way
Rushden, NN10 6GL, Reino Unido

+44 (0) 1933 35 2000

+44 (0) 1933 31 2000 fax

Belkin B.V.

Boeing Avenue 333

1119 PH Schiphol-Rijk, Holanda

+31 (0) 20 654 7300

+31 (0) 20 654 7349 fax

Belkin GmbH

Hanebergstraße 2,

80637 Munique, Alemanha

+49 (0) 89 143405 0

+49 (0) 89 143405 100 fax

Belkin SAS

130 rue de Silly

92100 Boulogne Billancourt, França

+33 (0) 1 41 03 14 40

+33 (0) 1 41 31 01 72 fax

Belkin Iberia

C/ Anabel Segura, 10 planta baja, Of. 2

28108, Alcobendas, Madrid, Espanha

+34 91 791 23 00

+34 91 490 23 35 fax

© 2008 Belkin International, Inc. Todos os direitos reservados. Todos os nomes de marcas são marcas registradas dos respectivos fabricantes enunciados no texto. O nome *Bluetooth* e as marcas *Bluetooth* são propriedade da *Bluetooth SIG, Inc.*, sendo utilizados pela Belkin International, Inc., sob licença. Mac, Mac OS e Apple são marcas comerciais da Apple Inc., registradas nos EUA e em outros países. Windows e Windows Vista são marcas ou marcas registradas da Microsoft Corporation nos Estados Unidos e/ou noutros países.

BELKIN.

Snabbinstallationsguide
***Bluetooth*® USB Adapter**



EN

FR

DE

NL

ES

IT

PT

SV

GR

CZ

PL

HU

SK

TU

RU

RO

Inledning

Systemkrav för PC

- PC-kompatibel dator, CPU-hastighet på 200 MHz eller snabbare
- Minne: 64 MB eller mer, 128 MB rekommenderas
- En ledig USB-port, USB 1.1 eller 2.0
- Windows® 98 SE, Me, 2000, XP och Vista®

Systemkrav för Mac®

- En ledig USB-port, USB 1.1 eller 2.0
- Mac OS® X v10.2 eller senare*

Produktinnehåll

- Bluetooth USB-adapter
 - Cd-skiva för installationsprogram och dokumentation
- *Drivrutin och programvara för Mac OS X tillhandahålls av Apple®

Installera programvara

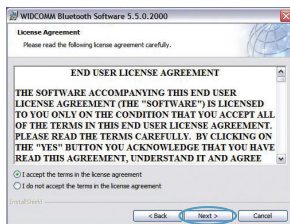
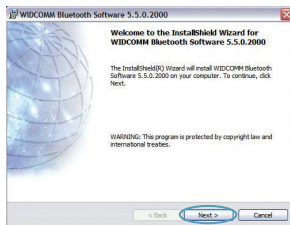
Installera programvara för Windows 98 SE, Me, 2000, XP och Vista

Installera programvaran för USB-adaptorn genom att följa anvisningarna nedan:

Obs! Installationen med Windows XP eller Windows Vista kan skilja sig något från Windows 98 SE, Me och 2000. Dessa anvisningar gäller en dator med Windows XP.

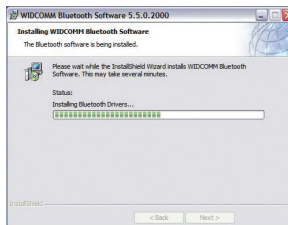
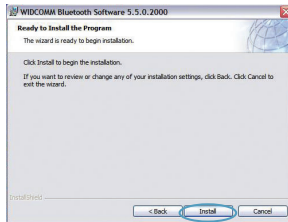
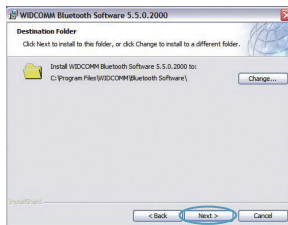
Obs! Anslut inte USB-adaptorn till USB-porten innan programvaran installeras.

1. Sätt in cd-skivan med programvaran i cd-läsaren.
2. Inled installationen genom att välja "install software" (installera programvara) på menyn.
3. Fönstret "Software InstallShield Wizard" (installationsguiden) visas. Inled installationen genom att klicka på "Next" (nästa).
4. Välj "I accept the terms in the license agreement" (jag accepterar villkoren i licensavtalet) om du accepterar licensavtalet. Fortsätt genom att klicka på "Next" (nästa).



Installera programvara

5. Ange var programvarufilerna ska installeras på hårddisken. Programvaran bör installeras i standardkatalogen "C:\Program Files\WIDCOMM\Bluetooth Software". Fortsätt genom att klicka på "Next" (nästa).
6. Bekräfta att programvaran är klar för installation och klicka på "Install" (installera)..
7. Installationsguiden börjar installera Belkins Bluetooth-programvara. **Detta kan ta upp till fem minuter. Vänta under tiden.**



Installera programvara

- Under installationen uppmanas du eventuellt att ansluta USB-adaptorn. Om USB-adaptorn inte är ansluten till datorn kan du ansluta den till lämplig USB-port och gå vidare genom att klicka på "OK".
- Bekräfta att programvaran har installerats och klicka på "Finish" (slutför).



Konfigurera Bluetooth

Innan du kan använda USB-adaptorn med Bluetooth-aktiverade enheter måste du konfigurera dina Bluetooth-inställningar och köra guiden för att välja Bluetooth-enhet.

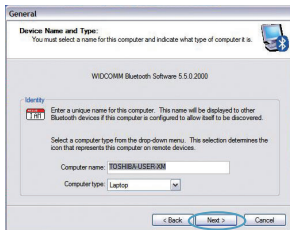
1. Dubbelklicka på ikonen för Bluetooth-platser på skrivbordet eller på Bluetooth-ikonen i systemfältet.



2. Bluetooth-konfigurationsguiden visas. Klicka på "Next" (nästa).

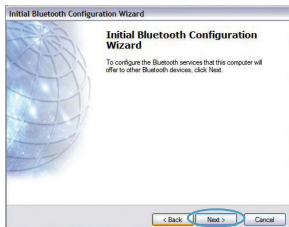


3. Ange vilket datornamn som ska visas för andra Bluetooth-enheter och klicka på "Next" (nästa).

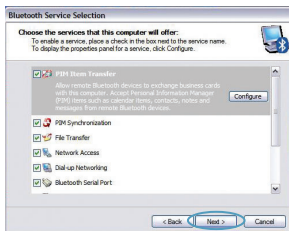


Konfigurera Bluetooth

- Den inledande Bluetooth-konfigurationsguiden visas. Klicka på "Next" (nästa).



- Välj vilka Bluetooth-tjänster du vill ha tillgängliga på datorn. Vi rekommenderar att du behåller standardinställningarna och klickar på "Next" (nästa).



Bluetooth-konfigurationen är nu klar.

Klicka på "Next" (nästa) för att gå vidare och ansluta till dina Bluetooth-aktiverade enheter.

Stäng konfigurationsguiden genom att klicka på "Skip" (hoppa över).



Information

Gratis teknisk support*

***Nationella samtalsavgifter kan tillkomma**

www.belkin.com

Du kan få mer supportinformation på vår webbplats www.belkin.com via området för teknisk support. Om du vill kontakta teknisk support per telefon kan du ringa lämpligt nummer i listan nedan*.

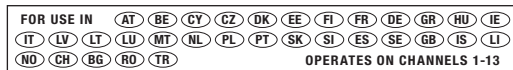
Country	Number	Internet adress
ÖSTERRIKE	08 - 20 20 07 66	http://www.belkin.com/uk
BELGIEN	07 07 00 073	http://www.belkin.com/nl
TJECKIEN	23 900 04 06	http://www.belkin.com/uk
DANMARK	701 22 403	http://www.belkin.com/uk
FINLAND	00800 - 22 35 54 60	http://www.belkin.com/uk
FRANKRIKE	08 - 25 54 00 26	http://www.belkin.com/fr
TYSKLAND	0180 - 500 57 09	http://www.belkin.com/de
GREKLAND	00800 - 44 14 23 90	http://www.belkin.com/uk
UNGERN	06 - 17 77 49 06	http://www.belkin.com/uk
ISLAND	800 8534	http://www.belkin.com/uk
IRLAND	0818 55 50 06	http://www.belkin.com/uk
ITALIEN	02 - 69 43 02 51	http://www.belkin.com/it/support/tech
LUXEMBURG	34 20 80 8560	http://www.belkin.com/uk
NEDERLÄNDERNA	0900 - 040 07 90 €0.10 per minute	http://www.belkin.com/nl
NORGE	815 00 287	http://www.belkin.com/uk
POLEN	00800 - 441 17 37	http://www.belkin.com/uk
PORTUGAL	707 200 676	http://www.belkin.com/uk
RYSSLAND	495 580 9541	http://www.belkin.com/uk
SYDAFRIKA	0800 - 99 15 21	http://www.belkin.com/uk
SPANIEN	902 - 02 43 66	http://www.belkin.com/es/support/tech
SVERIGE	07 - 71 40 04 53	http://www.belkin.com/se/support/tech
SCHWEIZ	08 - 48 00 02 19	http://www.belkin.com/uk
STORBRIANNIEN	0845 - 607 77 87	http://www.belkin.com/uk
ÖVRIGA LÄNDER	+44 - 1933 35 20 00	

Information

EU-MEDELANDE

Bluetooth-apparaterna F8T016 & F8T017 uppfyller kraven i EG-direktivet 1995/5/EG och är CE-märkta enligt deras klassificering.

Dessa produkter har testats och uppfyller kraven i de standarder som visas på respektive försäkran om överensstämmelse.



Restricted Use in Certain Countries.....Class 2 Equipment

For information on product disposal please refer to <http://environmental.belkin.com>



BELKIN®

www.belkin.com

Belkins tekniska support

Europe : www.belkin.com/support

Belkin Ltd.

Express Business Park, Shipton Way
Rushden, NN10 6GL, Storbritannien

+44 (0) 1933 35 2000

+44 (0) 1933 31 2000 fax

Belkin B.V.

Boeing Avenue 333

1119 PH Schiphol-Rijk, , Nederländerna

+31 (0) 20 654 7300

+31 (0) 20 654 7349 fax

Belkin GmbH

Hanebergstraße 2,
80637 Munich, Tyskland

+49 (0) 89 143405 0

+49 (0) 89 143405 100 fax

Belkin SAS

130 rue de Silly

92100 Boulogne Billancourt, Frankrike

+33 (0) 1 41 03 14 40

+33 (0) 1 41 31 01 72 fax

Belkin Iberia

C/ Anabel Segura, 10 planta baja, Of. 2

28108, Alcobendas, Madrid, Spanien

+34 91 791 23 00

+34 91 490 23 35 fax

© 2008 Belkin International, Inc. Med ensamrätt. Alla varunamn är registrerade varumärken som tillhör respektive tillverkare. Namnet Bluetooth och varumärket Bluetooth tillhör Bluetooth SIG, Inc. och används av Belkin International, Inc. under licens.

Mac, Mac OS och Apple är registrerade varumärken som tillhör Apple Inc. i USA och andra länder. Windows och Windows Vista är antingen registrerade varumärken eller varumärken som tillhör Microsoft Corporation i USA och/eller i andra länder.

BELKIN®

Οδηγός γρήγορης εγκατάστασης
Bluetooth® USB προσαρμογέας



EN

FR

DE

NL

ES

IT

PT

SV

GR

CZ

PL

HU

SK

TU

RU

RO

Εισαγωγή

Απαιτήσεις συστήματος PC

- Υπολογιστής PC ή συμβατός, ταχύτητα CPU 200 MHz ή μεγαλύτερη
- Μνήμη: 64 MB ή μεγαλύτερη, 128 MB συνιστώμενη
- Μία διαθέσιμη θύρα USB, USB 1.1 ή 2.0
- Windows® 98 SE, Me, 2000, XP και Vista®

Mac® Απαιτήσεις συστήματος

- Μία διαθέσιμη θύρα USB, USB 1.1 ή 2.0
- Mac OS® X v10.2 ή μεταγενέστερες*

Περιεχόμενο συσκευασίας

- *Bluetooth* USB προσαρμογέας
 - CD για την εγκατάσταση του λογισμικού και των συνοδευτικών εγγράφων
- *Το πρόγραμμα οδήγησης και το λογισμικό για το Mac OS X παρέχονται από την Apple®

Εγκατάσταση λογισμικού

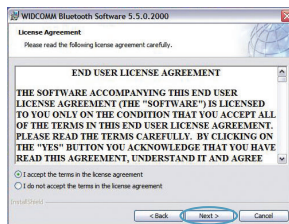
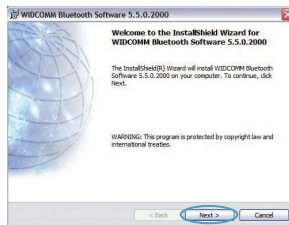
Εγκατάσταση λογισμικού για Windows 98 SE, Me, 2000, XP και Vista

Για να εγκαταστήσετε το λογισμικό για τον προσαρμογέα USB, ακολουθήστε τις παρακάτω οδηγίες:

Σημείωση: Η διαδικασία εγκατάστασης για τα Windows XP και τα Windows Vista ενδέχεται να φαίνεται ελαφρώς διαφορετική από εκείνη για τα Windows 98 SE, Me και 2000. Οι οδηγίες που ακολουθούν, βασίζονται σε υπολογιστή Windows XP.

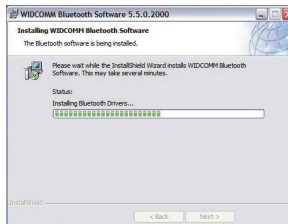
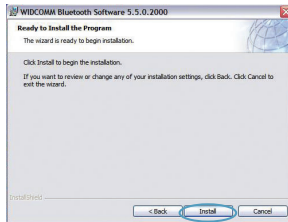
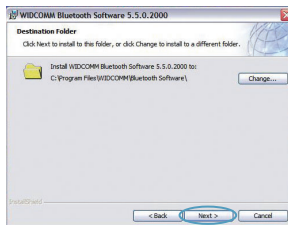
Σημείωση: Μην τοποθετήσετε τον προσαρμογέα USB στη θύρα USB πριν εγκαταστήσετε το λογισμικό.

1. Τοποθετήστε το CD εγκατάστασης του λογισμικού στη μονάδα CD-ROM του υπολογιστή.
2. Επιλέξτε "Install software" (Εγκατάσταση λογισμικού) από το μενού για να ξεκινήσει η εγκατάσταση.
3. Εμφανίζεται το παράθυρο του οδηγού εγκατάστασης "Software InstallShield Wizard". Κάντε κλικ στο "Next" (Επόμενο) για να ξεκινήσετε τη διαδικασία εγκατάστασης.



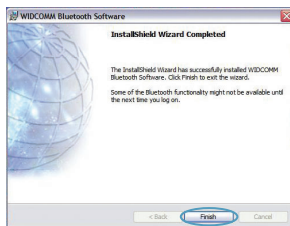
Εγκατάσταση λογισμικού

- Επιλέξτε "I accept the terms in the license agreement" (Αποδέχομαι τους όρους της άδειας χρήσης" για να αποδεχθείτε την άδεια χρήσης. Κάντε κλικ στο "Next" (Επόμενο) για να συνεχίσετε.
- Καθορίστε τη θέση στην οποία θα εγκατασταθούν τα αρχεία του λογισμικού στο σκληρό σας δίσκο. Συνιστούμε να εγκαταστήσετε τα αρχεία του λογισμικού στον προεπιλεγμένο κατάλογο "C:\Program Files\WIDCOMM\Bluetooth Software". Κάντε κλικ στο "Next" (Επόμενο) για να συνεχίσετε.
- Βεβαιωθείτε ότι το λογισμικό της συσκευής είναι έτοιμο για εγκατάσταση και κάντε κλικ στο "Install" (Εγκατάσταση).



Εγκατάσταση λογισμικού

7. Ο οδηγός εγκατάστασης InstallShield Wizard θα ξεκινήσει την εγκατάσταση του λογισμικού *Bluetooth* της Belkin. **Αυτή η διαδικασία μπορεί να διαρκέσει έως και πέντε λεπτά. Περιμένετε.**
8. Κατά τη διαδικασία εγκατάστασης, θα σας ζητηθεί να τοποθετήσετε τον προσαρμογέα USB. Εάν ο προσαρμογέας USB δεν είναι συνδεδεμένος στον υπολογιστή σας, μπορείτε να τον συνδέσετε στη θύρα USB και κατόπιν να κάνετε κλικ στο "OK" για να συνεχίσετε.
9. Επιβεβαιώστε την ολοκλήρωση της εγκατάστασης του λογισμικού και κάντε κλικ στο "Finish" (Τέλος).



Bluetooth Ρύθμιση παραμέτρων

Για να μπορέσετε να χρησιμοποιήσετε τον προσαρμογέα USB με τις συσκευές τεχνολογίας *Bluetooth*, θα πρέπει να διαμορφώσετε τις ρυθμίσεις του *Bluetooth* και να εκτελέσετε τον σχετικό με το *Bluetooth* οδηγό επιλογής συσκευών (Device Selection).

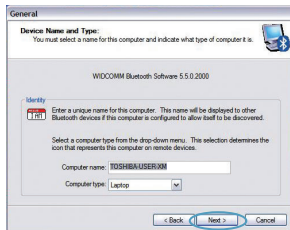
1. Κάντε διπλό κλικ στο εικονίδιο "*Bluetooth Places*", που βρίσκεται στην οθόνη της επιφάνειας εργασίας ή στο εικονίδιο "*Bluetooth*" που βρίσκεται στην περιοχή ειδοποιήσεων.



2. Θα εμφανιστεί ο οδηγός ρύθμισης παραμέτρων του *Bluetooth* (Configuration Wizard). Κάντε κλικ στο "Next" (Επόμενο).



3. Καθορίστε το όνομα του υπολογιστή το οποίο θα εμφανίζεται σε άλλες συσκευές *Bluetooth* και κάντε κλικ στο "Next" (Επόμενο).



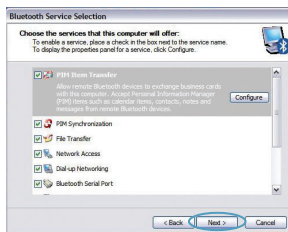
Bluetooth Ρύθμιση παραμέτρων

- Θα εμφανιστεί ο αρχικός οδηγός ρύθμισης παραμέτρων του *Bluetooth* (Configuration Wizard). Κάντε κλικ στο "Next" (Επόμενο).
- Επιλέξτε τις υπηρεσίες *Bluetooth* που θέλετε να είναι διαθέσιμες στον υπολογιστή σας. Συναρμολογήστε με αφήστε τις προεπιλεγμένες ρυθμίσεις και να κάνετε κλικ στο "Next" (Επόμενο).

Bluetooth - Η εγκατάσταση έχει ολοκληρωθεί.

Κάντε κλικ στο "Next" (Επόμενο) για να συνεχίσετε και να συνδέσετε τις συσκευές τεχνολογίας *Bluetooth*.

Κάντε κλικ στο "Skip" (Παράλειψη) για να κλείσετε τον οδηγό ρύθμισης παραμέτρων.



Πληροφορίες

Δωρεάν τεχνική υποστήριξη* *Ενδέχεται να ισχύουν τέλη εθνικών κλήσεων

www.belkin.com

Μπορείτε να βρείτε πρόσθετες πληροφορίες υποστήριξης στη δικτυακή τοποθεσία μας www.belkin.com από το Τμήμα-Τεχνικής Υποστήριξης. Εάν επιθυμείτε να επικοινωνήσετε τηλεφωνικά με το Τμήμα Τεχνικής Υποστήριξης, καλέστε τον αριθμό που χρειάζεστε από την παρακάτω λίστα*.

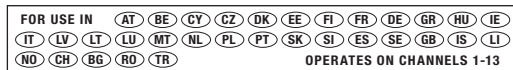
Χώρα	Αριθμός	Διεύθυνση Internet
AUSTRIA	08 - 20 20 07 66	http://www.belkin.com/uk
BELGIUM	07 07 00 073	http://www.belkin.com/nl
CZECH REPUBLIC	23 900 04 06	http://www.belkin.com/uk
DENMARK	701 22 403	http://www.belkin.com/uk
FINLAND	00800 - 22 35 54 60	http://www.belkin.com/uk
FRANCE	08 - 25 54 00 26	http://www.belkin.com/fr
GERMANY	0180 - 500 57 09	http://www.belkin.com/de
ΕΛΛΑΔΑ	00800 - 44 14 23 90	http://www.belkin.com/uk
HUNGARY	06 - 17 77 49 06	http://www.belkin.com/uk
ICELAND	800 8534	http://www.belkin.com/uk
IRELAND	0818 55 50 06	http://www.belkin.com/uk
ITALY	02 - 69 43 02 51	http://www.belkin.com/it/support/tech
LUXEMBOURG	34 20 80 8560	http://www.belkin.com/uk
NETHERLANDS	0900 - 040 07 90 €0,10 ανά λεπτό	http://www.belkin.com/nl
NORWAY	815 00 287	http://www.belkin.com/uk
POLAND	00800 - 441 17 37	http://www.belkin.com/uk
PORTUGAL	707 200 676	http://www.belkin.com/uk
RUSSIA	495 580 9541	http://www.belkin.com/uk
SOUTH AFRICA	0800 - 99 15 21	http://www.belkin.com/uk
SPAIN	902 - 02 43 66	http://www.belkin.com/es/support/tech
SWEDEN	07 - 71 40 04 53	http://www.belkin.com/se/support/tech
SWITZERLAND	08 - 48 00 02 19	http://www.belkin.com/uk
UNITED KINGDOM	0845 - 607 77 87	http://www.belkin.com/uk
ΥΠΟΛΟΙΠΕΣ ΧΩΡΕΣ	+44 - 1933 35 20 00	

Πληροφορίες

ΣΗΜΕΙΩΣΗ ΕΕ

Οι συσκευές Bluetooth F8T016 και F8T017 συμμορφώνονται προς τις απαιτήσεις της Οδηγίας 1995/5/EC της ΕΚ και φέρουν σήμανση CE ανάλογα με την κατηγοριοποίησή τους.

Αυτά τα προϊόντα υποβάλλονται σε δοκιμές και πληρούν τις απαιτήσεις των προτύπων που αναγράφονται στις αντίστοιχες Δηλώσεις Συμμόρφωσης των προϊόντων.



Restricted Use in Certain Countries.....Class 2 Equipment

For information on product disposal please refer to <http://environmental.belkin.com>



BELKIN®

www.belkin.com

Τεχνική Υποστήριξη Belkin
Ευρώπη: www.belkin.com/support

Belkin Ltd.

Express Business Park, Shipton Way
Rushden, NN10 6GL, United Kingdom
+44 (0) 1933 35 2000
+44 (0) 1933 31 2000 fax

Belkin B.V.

Boeing Avenue 333
1119 PH Schiphol-Rijk, Netherlands
+31 (0) 20 654 7300
+31 (0) 20 654 7349 fax

Belkin GmbH

Hanebergstrasse 2
80637 Munich, Germany
+49 (0) 89 143405 0
+49 (0) 89 143405 100 fax

Belkin SAS

130 rue de Silly
92100 Boulogne Billancourt, France
+33 (0) 1 41 03 14 40
+33 (0) 1 41 31 01 72 fax

Belkin Iberia

C/ Anabel Segura, 10 planta baja, Of. 2
28108, Alcobendas, Madrid, Spain
+34 91 791 23 00
+34 91 490 23 35 fax

© 2008 Belkin International, Inc. Με την επιφύλαξη παντός δικαιώματος. Όλες οι εμπορικές ονομασίες είναι εμπορικά σήματα κατατεθέντα των αντίστοιχων κατασκευαστών. Η ονομασία *Bluetooth* και τα εμπορικά σήματα *Bluetooth* είναι ιδιοκτησία της *Bluetooth SIG, Inc.* και χρησιμοποιούνται από την *Belkin International, Inc.* κατόπιν άδειας. Οι ονομασίες *Mac*, *Mac OS* και *Apple* είναι εμπορικά σήματα της *Apple Inc.*, κατατεθέντα στις ΗΠΑ και σε άλλες χώρες. Οι ονομασίες *Microsoft* και *Windows Vista* είναι είτε εμπορικά σήματα κατατεθέντα είτε εμπορικά σήματα της *Microsoft Corporation* στις ΗΠΑ ή/και σε άλλες χώρες.

BELKIN.

Stručný průvodce instalací
Adaptér Bluetooth® USB



EN

FR

DE

NL

ES

IT

PT

SV

GR

CZ

PL

HU

SK

TU

RU

RO

Úvod

Požadavky na systém počítače

- Počítač standardu PC, procesor s rychlostí 200 MHz nebo vyšší
- Paměť: 64 MB nebo více, doporučeno 128 MB
- Jeden volný port USB 1.1 nebo 2.0
- Windows® 98 SE, Me, 2000, XP a Vista®

Mac® Požadavky na systém

- Jeden volný port USB 1.1 nebo 2.0
- Operační systém Mac OS® X 10.2 nebo vyšší*

Obsah balení

- *Adaptér Bluetooth* USB
- Disk CD-ROM s instalačním softwarem a dokumentací

*Ovladač pro operační systém Mac OS X a software od společnosti Apple®

Instalace softwaru

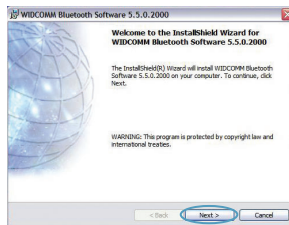
Instalace softwaru v operačním systému Windows 98 SE, Me, 2000, XP a Vista

Při instalaci softwaru pro adaptér USB postupujte podle následujících pokynů:

Poznámka: Postup instalace v operačním systému Windows XP nebo Windows Vista se může mírně lišit od postupu instalace v operačním systému Windows 98 SE, Me a 2000. Tyto pokyny jsou založeny na počítači s operačním systémem Windows XP.

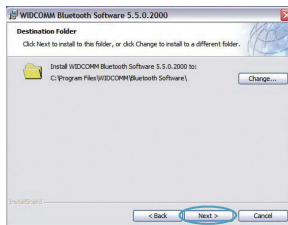
Poznámka: Před instalací softwaru nepřipojujte adaptér USB k portu USB.

1. Vložte instalační disk CD-ROM se softwarem do jednotky CD-ROM počítače.
2. Z nabídky vyberte možnost „install software“ (instalovat software) a zahájí se instalace.
3. Zobrazí se okno „Software InstallShield Wizard“ (Průvodce instalací softwaru InstallShield). Klepnutím na tlačítko „Next“ (Další) spustíte instalaci.
4. Přijměte podmínky licenční smlouvy vybráním možnosti „I accept the terms in the license agreement“ (S podmínkami licenční smlouvy souhlasím). Pokračujte klepnutím na tlačítko „Next“ (Další).

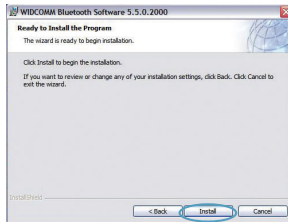


Instalace softwaru

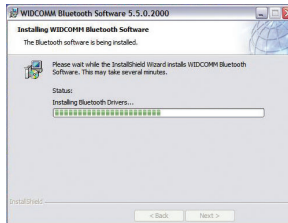
5. Zadejte místo na pevném disku, kam se mají nainstalovat soubory softwaru. Doporučujeme nainstalovat software do výchozího adresáře „C:\Program Files\WIDCOMM\Bluetooth Software“. Pokračujte klepnutím na tlačítko „Next“ (Další).



6. Potvrďte, že je software zařízení připravený k instalaci, a klepněte na tlačítko „Install“ (Instalovat).



7. Průvodce InstallShield zahájí instalaci softwaru Belkin *Bluetooth*. **Instalace může trvat až pět minut, žádáme o chvíli strpení.**

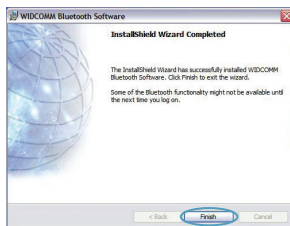


Instalace softwaru

8. Během instalace můžete být vyzváni, abyste připojili adaptér USB. Pokud v tomto okamžiku není adaptér USB připojený k počítači, můžete jej připojit do požadovaného portu a pokračovat klepnutím na tlačítko „OK“.



9. Potvrďte dokončení instalace softwaru a klepněte na tlačítko „Finish“ (Dokončit).



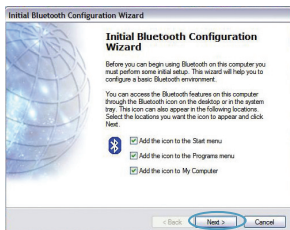
Konfigurace Bluetooth

Chcete-li adaptér USB používat se zařízeními vybavenými technologií *Bluetooth*, musíte nakonfigurovat nastavení *Bluetooth* a spustit Průvodce pro výběr zařízení *Bluetooth*.

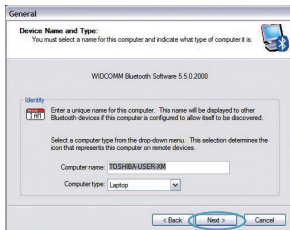
1. Poklepejte na ikonu pro místa *Bluetooth* na pracovní ploše nebo na ikonu *Bluetooth* na hlavním panelu.



2. Zobrazí se Průvodce konfigurací *Bluetooth*. Klepněte na tlačítko „Next“ (Další).



3. Zadejte název počítače, který se bude zobrazovat ostatním zařízení *Bluetooth*, a klepněte na tlačítko „Next“ (Další).

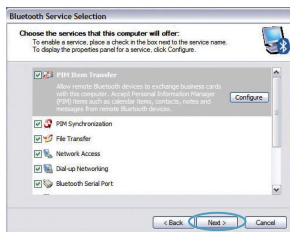


Konfigurace Bluetooth

4. Zobrazí se Průvodce výchozí konfigurací *Bluetooth*. Klepněte na tlačítko „Next“ (Další).



5. Vyberte služby *Bluetooth*, které chcete mít dostupné ve svém počítači. Doporučujeme ponechat výchozí nastavení a klepnout na tlačítko „Next“ (Další).



Bluetooth je nyní dokončeno.

Pokud chcete pokračovat a připojit se k zařízením s technologií *Bluetooth*, klepněte na tlačítko „Next“ (Další).

Klepnutím na tlačítko „Skip“ (Přeskočit) ukončíte Průvodce konfigurací.



Informace

Bezplatná odborná pomoc* *Na volání se mohou vztahovat místní telefonní poplatky

www.belkin.com

Další informace o podpoře najdete na našich webových stránkách www.belkin.com v části věnované -technické podpoře. Chcete-li se obrátit na technickou podporu telefonicky, zavolejte na příslušné číslo uvedené v následujícím seznamu*.

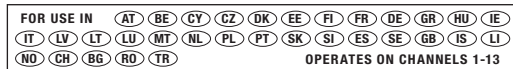
Země	Číslo	Internetová adresa
RAKOUSKO	08 - 20 20 07 66	http://www.belkin.com/uk
BELGIE	07 07 00 073	http://www.belkin.com/nl
ČESKÁ REPUBLIKA	23 900 04 06	http://www.belkin.com/uk
DÁNSKO	701 22 403	http://www.belkin.com/uk
FINSKO	00800 - 22 35 54 60	http://www.belkin.com/uk
FRANCIE	08 - 25 54 00 26	http://www.belkin.com/fr
NĚMECKO	0180 - 500 57 09	http://www.belkin.com/de
RECKO	00800 - 44 14 23 90	http://www.belkin.com/uk
MAĎARSKO	06 - 17 77 49 06	http://www.belkin.com/uk
ISLAND	800 8534	http://www.belkin.com/uk
IRSKO	0818 55 50 06	http://www.belkin.com/uk
ITALIE	02 - 69 43 02 51	http://www.belkin.com/it/support/tech
LUCSEMBURSKO	34 20 80 8560	http://www.belkin.com/uk
NIZOZEMSKO	0900 - 040 07 90 0,10 € za minutu	http://www.belkin.com/nl
NORSKO	815 00 287	http://www.belkin.com/uk
POLSKO	00800 - 441 17 37	http://www.belkin.com/uk
PORTUGALSKO	707 200 676	http://www.belkin.com/uk
RUSKO	495 580 9541	http://www.belkin.com/uk
JAR	0800 - 99 15 21	http://www.belkin.com/uk
ŠPANEĚLSKO	902 - 02 43 66	http://www.belkin.com/es/support/tech
ŠVÉDSKO	07 - 71 40 04 53	http://www.belkin.com/se/support/tech
ŠVÝCARSKO	08 - 48 00 02 19	http://www.belkin.com/uk
VELKÁ BRITÁNIE	0845 - 607 77 87	http://www.belkin.com/uk
OSTATNÍ ZEMĚ	+44 - 1933 35 20 00	

Informace

Upozornění EU

Zařízení Bluetooth F8T016 a F8T017 splňují požadavky Směrnice EU 1995/5/EC a mají označení CE v souladu s jejich klasifikací.

Tyto produkty jsou testovány, aby splňovaly standardní požadavky uvedené v příslušném Prohlášení o shodě.



Restricted Use in Certain Countries.....Class 2 Equipment



For information on product disposal please refer to <http://environmental.belkin.com>

BELKIN®

www.belkin.com

Technická podpora společnosti Belkin,

Evropa: www.belkin.com/support

Belkin Ltd.

Express Business Park, Shipton WayRushden,

NN10 6GL, Velká Británie

+44 (0) 1933 35 2000

+44 (0) 1933 31 2000 fax

Belkin B.V.

Boeing Avenue 3331119 PH Schiphol-Rijk, Nizozemsko

+31 (0) 20 654 7300

+31 (0) 20 654 7349 fax

Belkin GmbH

Hanebergstraße 2,80637 Mnichov, Německo

+49 (0) 89 143405 0

+49 (0) 89 143405 100 fax

Belkin SAS130 rue de Silly92100 Boulogne Billancourt, Francie

+33 (0) 1 41 03 14 40

+33 (0) 1 41 31 01 72 fax

Belkin IberiaC/ Anabel Segura, 10 planta baja, Of. 2

28108, Alcobendas, Madrid, Španělsko

+34 91 791 23 00

+34 91 490 23 35 fax

© 2008 Belkin International, Inc. Všechna práva vyhrazena. Veškeré obchodní názvy jsou registrované ochranné známky příslušných výrobců. Vlastníkem názvu *Bluetooth* ochranných známek *Bluetooth*, které společnost Belkin International, Inc. používá pod licencí, je společnost *Bluetooth SIG, Inc.* Mac, Mac OS a Apple jsou ochranné známky společnosti Apple Inc., registrované v USA a dalších zemích. Windows a Windows Vista jsou ochranné známky nebo registrované ochranné známky společnosti Microsoft Corporation v USA a/nebo v dalších zemích.

BELKIN.

Skrócony przewodnik instalacji

Bluetooth® USB



EN

FR

DE

NL

ES

IT

PT

SV

GR

CZ

PL

HU

SK

TU

RU

RO

Wprowadzenie

Wymagania systemowe — komputer PC

- Komputer zgodny z PC, prędkość procesora 200 MHz lub większa
- Pamięć: 64 MB lub więcej, zalecane 128 MB
- Jeden wolny port USB, standard USB 1.1 lub 2.0
- Windows® 98 SE, Me, 2000, XP lub Vista®

Wymagania systemowe — komputer Mac®

- Jeden wolny port USB, standard USB 1.1 lub 2.0
- Mac OS® X wersja 10.2 lub nowsza*

Zawartość opakowania

- Adapter *Bluetooth* USB
- Płyta CD-ROM z oprogramowaniem instalacyjnym i dokumentacją

*Sterownik Mac OS X i oprogramowanie firmy Apple®

Konfiguracja oprogramowania

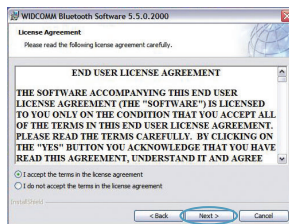
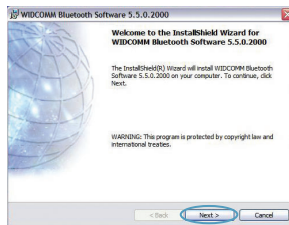
Konfiguracja oprogramowania — systemy Windows 98 SE, Me, 2000, XP i Vista

Instalowanie oprogramowania adaptera USB:

Uwaga: Proces instalacji w systemach Windows XP i Windows Vista może przebiegać nieco inaczej niż w systemach Windows 98 SE, Me i 2000. W tej instrukcji przedstawiono instalację na przykładzie komputera z systemem Windows XP.

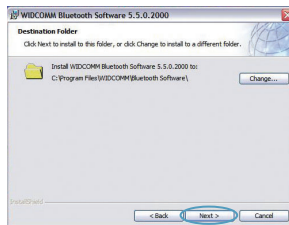
Uwaga: Nie należy wkładać adaptera USB do portu USB przed zainstalowaniem oprogramowania.

1. Włóż płytę instalacyjną do napędu CD-ROM komputera.
2. W celu rozpoczęcia instalacji wybierz z menu pozycję Install software (Instalacja oprogramowania).
3. Następuje wyświetlenie okna Software InstallShield Wizard (Kreator instalacji oprogramowania). Aby rozpocząć instalację, kliknij przycisk Next (Dalej).

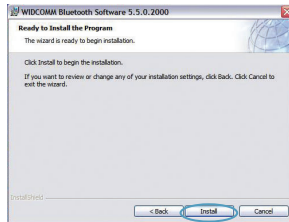


Konfiguracja oprogramowania

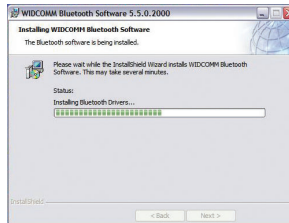
4. Wybierz opcję „I accept the terms in the license agreement” (Akceptuję warunki umowy licencyjnej). Aby przejść dalej, kliknij przycisk Next (Dalej).



5. Wybierz na twardym dysku folder, w którym chcesz zainstalować pliki oprogramowania. Zaleca się, aby zainstalować oprogramowanie w folderze domyślnym C:\Program Files\WIDCOMM\Bluetooth Software\. Aby przejść dalej, kliknij przycisk Next (Dalej).



6. Upewnij się, czy oprogramowanie urządzenia jest gotowe do instalacji i kliknij przycisk Install.



Konfiguracja oprogramowania

7. Kreator instalacji rozpoczyna instalowanie oprogramowania *Bluetooth* firmy Belkin. **Proces instalacji może zająć do pięciu minut.**
8. Podczas instalacji może zostać wyświetlona prośba o włożenie adaptera USB. Jeśli adapter USB nie jest podłączony do komputera, teraz włóż go do odpowiedniego gniazda USB. Następnie kliknij przycisk OK.
9. Potwierdź ukończenie instalacji oprogramowania i kliknij przycisk Finish (Zakończ).



Bluetooth

Aby rozpocząć korzystanie z adaptera USB w połączeniu z urządzeniami *Bluetooth*, najpierw należy skonfigurować ustawienia *Bluetooth* i uruchomić kreatora wyboru urządzenia *Bluetooth*.

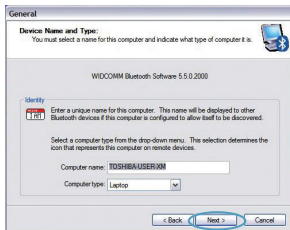
1. Dwukrotnie kliknij ikonę *Bluetooth Places* na pulpicie komputera lub *Bluetooth* na pasku zadań.



2. Następuje wyświetlenie kreatora konfiguracji *Bluetooth*. Kliknij przycisk Next (Dalej).



3. Określ nazwę komputera, która będzie widoczna dla innych urządzeń *Bluetooth* i kliknij przycisk Next (Dalej).

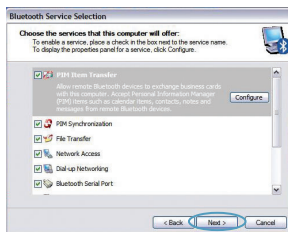


Bluetooth

- Następuje wyświetlenie kreatora wstępnej konfiguracji *Bluetooth*. Kliknij przycisk Next (Dalej).



- Wybierz usługi *Bluetooth*, które mają być dostępne w komputerze. Zalecamy pozostawienie ustawień domyślnych. Kliknij przycisk Next (Dalej).



Bluetooth została zakończona.

Aby nawiązać połączenie z innym urządzeniem *Bluetooth*, kliknij przycisk Next (Dalej).

Aby zamknąć kreatora konfiguracji, kliknij przycisk Skip (Pomiń).



Informacje

Bezpłatna pomoc techniczna* *Mogą obowiązywać stawki krajowe

www.belkin.com

Informacje na temat pomocy technicznej można znaleźć na stronie internetowej www.belkin.com w części „tech-support”. Aby skontaktować się z pomocą techniczną telefonicznie, prosimy zadzwonić pod odpowiedni numer wybrany z poniższej listy*.

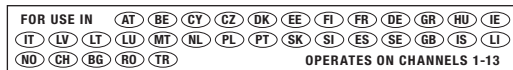
Kraj	Numer	Adres internetowy
AUSTRIA	08 - 20 20 07 66	http://www.belkin.com/uk
BELGIA	07 07 00 073	http://www.belkin.com/nl
CZECHY	23 900 04 06	http://www.belkin.com/uk
DANIA	701 22 403	http://www.belkin.com/uk
FINLANDIA	00800 - 22 35 54 60	http://www.belkin.com/uk
FRANCJA	08 - 25 54 00 26	http://www.belkin.com/fr
NIEMCY	0180 - 500 57 09	http://www.belkin.com/de
GRECJA	00800 - 44 14 23 90	http://www.belkin.com/uk
WĘGRY	06 - 17 77 49 06	http://www.belkin.com/uk
ISLANDIA	800 8534	http://www.belkin.com/uk
IRLANDIA	0818 55 50 06	http://www.belkin.com/uk
WŁOCHY	02 - 69 43 02 51	http://www.belkin.com/it/support/tech
LUKSEMBURG	34 20 80 8560	http://www.belkin.com/uk
HOLANDIA	0900 - 040 07 90 0,10 EUR/min	http://www.belkin.com/nl
NORWEGIA	815 00 287	http://www.belkin.com/uk
POLSKA	00800 - 441 17 37	http://www.belkin.com/uk
PORTUGALIA	707 200 676	http://www.belkin.com/uk
ROSIJA	495 580 9541	http://www.belkin.com/uk
RPA	0800 - 99 15 21	http://www.belkin.com/uk
HISZPANIA	902 - 02 43 66	http://www.belkin.com/es/support/tech
SZWECJA	07 - 71 40 04 53	http://www.belkin.com/se/support/tech
SZWAJCARIA	08 - 48 00 02 19	http://www.belkin.com/uk
WIELKA BRYTANIA	0845 - 607 77 87	http://www.belkin.com/uk
INNE KRAJE	+44 - 1933 35 20 00	

Informacje

NOTA UNIJNA

Urządzenia Bluetooth F8T016 i F8T017 spełniają wymagania dyrektywy unijnej 1995/5/EC i noszą oznaczenie CE odpowiednie do ich klasyfikacji.

Te produkty zostały przetestowane i spełniają wymagania norm wymienionych na odpowiednich dla nich deklaracjach zgodności.



Restricted Use in Certain Countries.....Class 2 Equipment



For information on product disposal please refer to <http://environmental.belkin.com>

BELKIN®

www.belkin.com

Pomoc techniczna firmy Belkin
Europa: www.belkin.com/support

Belkin Ltd.

Express Business Park, Shipton Way
Rushden, NN10 6GL, Wielka Brytania
+44 (0) 1933 35 2000
+44 (0) 1933 31 2000 faks

Belkin B.V.

Boeing Avenue 333
1119 PH Schiphol-Rijk, Holandia
+31 (0) 20 654 7300
+31 (0) 20 654 7349 faks

Belkin GmbH

Hanebergstraße 2,
80637 Monachium, Niemcy
+49 (0) 89 143405 0
+49 (0) 89 143405 100 faks

Belkin SAS

130 rue de Silly
92100 Boulogne Billancourt, Francja
+33 (0) 1 41 03 14 40
+33 (0) 1 41 31 01 72 faks

Belkin Iberia

C/ Anabel Segura, 10 planta baja, Of. 2
28108, Alcobendas, Madryt, Hiszpania
+34 91 791 23 00
+34 91 490 23 35 faks

© 2008 Belkin International Inc. Wszelkie prawa zastrzeżone. Wszystkie nazwy handlowe są zastrzeżonymi znakami towarowymi odpowiednich producentów. Nazwa *Bluetooth* oraz znaki towarowe *Bluetooth* są własnością podmiotu *Bluetooth SIG Inc.* i zostały wykorzystane przez firmę Belkin International Inc. zgodnie z udzielonym zezwoleniem. Mac, Mac OS i Apple są znakami handlowymi firmy Apple Inc. zarejestrowanymi w USA i innych krajach. Windows oraz Windows Vista są zastrzeżonymi znakami towarowymi lub znakami towarowymi firmy Microsoft Corporation w Stanach Zjednoczonych i/lub innych krajach.

BELKIN.

Gyors telepítési útmutató

Bluetooth® USB Adapter



EN

FR

DE

NL

ES

IT

PT

SV

GR

CZ

PL

HU

SK

TU

RU

RO

Bevezetés

PC rendszerkövetelmények:

- PC-kompatibilis számítógép, CPU sebesség 200 MHz vagy nagyobb
- Memória: 64 MB vagy nagyobb, 128 MB ajánlott
- Egy üres USB port, USB 1.1 vagy 2.0
- Windows® 98 SE, Me, 2000, XP és Vista®

Mac® rendszerkövetelmények

- Egy üres USB port, USB 1.1 vagy 2.0
- Mac OS® X v10.2 vagy újabb*

A termék tartalma

- *Bluetooth* USB adapter
- CD-ROM telepítő szoftverrel és dokumentációval

*A Mac OS X illesztőt és szoftvert az Apple®

A szoftver telepítése

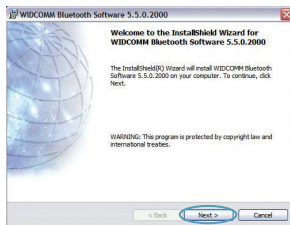
Szoftver telepítése Windows® 98 SE, Me, 2000, XP és Vista esetében

Az USB illesztőegység szoftverének telepítését az alábbi utasítások szerint kell végrehajtani:

Megjegyzés: A telepítés Windows XP vagy Windows Vista alatt kissé eltérhet a Windows 98 SE, Me és 2000 esetében megszokottól. Ezek az utasítások Windows XP-t futtató számítógép alapján kerültek megadásra.

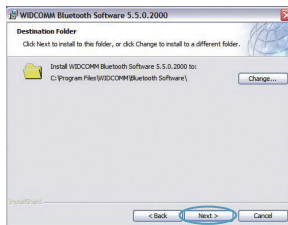
Megjegyzés: Ne csatlakoztassa az USB-adaptert az USB-portra a szoftver telepítése előtt!

1. Helyezze be a szoftvertelepítő CD lemezt a számítógép CD-ROM meghajtójába.
2. Válassza az "install software" (szoftver telepítése) pontot a menüben a telepítés megkezdéséhez.
3. Ekkor megjelenik a "Software InstallShield Wizard" varázsló ablak. Kattintson a "Next" (Következő) gombra a telepítés megkezdéséhez.

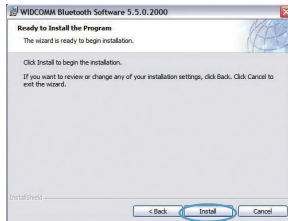


A szoftver telepítése

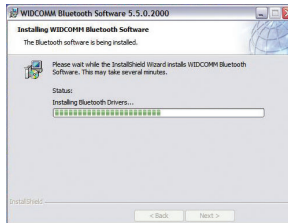
4. Fogadja el a szoftverhasználati engedély feltételeit az "I accept the terms in the license agreement" szöveg kiválasztásával! A folytatáshoz kattintson a "Next" (Következő) gombra.



5. Adja meg a merevlemezen azt a helyet, ahová telepíteni kívánja a szoftvert! Ajánlatos a szoftvert az alapértelmezett "C:\Program Files\WIDCOMM\Bluetooth Software\" mappába telepíteni. A folytatáshoz kattintson a "Next" (Következő) gombra.



6. Nyugtázza, hogy az eszköz szoftvere telepítésére kész, majd kattintson az "Install" (Telepítés) gombra!



A szoftver telepítése

7. Az InstallShield Wizard varázsló megkezdi a Belkin *Bluetooth* szoftver telepítését.
Ez legfeljebb öt percig tarthat, ezért várjon.



8. A telepítés folyamán a rendszer kérheti, hogy helyezze be az USB adaptert. Ha az USB adapter ekkor még nincs behelyezve a számítógépbe, helyezze be a kívánt USB portba, majd folytatáshoz kattintson az "OK" gombra.



Bluetooth Konfiguráció

Az USB adapter *Bluetooth* technológiával ellátott eszközzel történő használatához konfigurálni kell a *Bluetooth* beállításokat és futtatni kell a *Bluetooth* eszközkiválasztó varázslót.

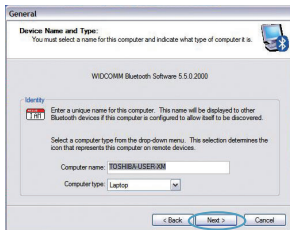
9. Nyugtázza a szoftver telepítésének befejezését, majd kattintson a "Finish" (Befejezés) gombra.



1. Kattintson duplán az Asztalon levő *Bluetooth* Places ikonra vagy a Rendszertálcán levő *Bluetooth* ikonra.



2. A *Bluetooth* konfigurációs varázsló jelenik meg. Kattintson a "Következő" gombra.



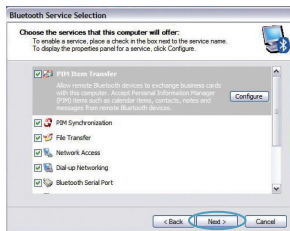
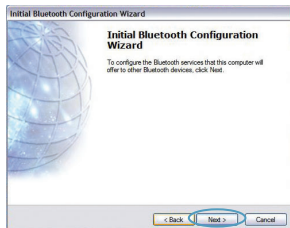
Bluetooth Konfiguráció

- Adja meg azt a számítógépet, amely a többi *Bluetooth* eszközön fog megjelenni, majd kattintson a "Következő" gombra.
- A kezdő *Bluetooth* konfigurációs varázsló jelenik meg. Kattintson a "Next" (Következő) gombra.
- Válassza ki azokat a *Bluetooth* szolgáltatásokat, amelyeket a számítógépe fog nyújtani. Javasoljuk, hogy hagyja meg az alapértelmezett beállítást, majd kattintson a "Következő" gombra.

Bluetooth beállítása ezzel befejeződött.

Kattintson a "Next" (Következő) gombra és csatlakoztassa a *Bluetooth* technológiával ellátott eszközeit.

A konfigurációs varázsló bezárásához kattintson a "Skip" (Átlépés) gombra!



Információk

Ingyenes műszaki támogatás* *Belföldi hívásdíj esetlegesen fizetendő

www.belkin.com

További támogatási információ található a www.belkin.com oldalon, a műszaki-támogatás területen. Ha telefonon akarja elérni a műszaki támogatót szolgálatot, akkor hívja az alábbi listában szereplő Önnek alkalmas számot*.

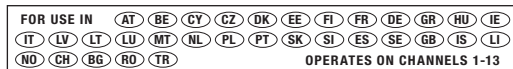
Ország	Szám	Internet-cím
AUSZTRIA	08 - 20 20 07 66	http://www.belkin.com/uk
BELGIUM	07 07 00 073	http://www.belkin.com/nl
CSEH KÖZTÁRSASÁG	23 900 04 06	http://www.belkin.com/uk
DÁNIA	701 22 403	http://www.belkin.com/uk
FINNORSZÁG	00800 - 22 35 54 60	http://www.belkin.com/uk
FRANCIAORSZÁG	08 - 25 54 00 26	http://www.belkin.com/fr
NÉMETORSZÁG	0180 - 500 57 09	http://www.belkin.com/de
GÖRÖGORSZÁG	00800 - 44 14 23 90	http://www.belkin.com/uk
MAGYARORSZÁG	06 - 17 77 49 06	http://www.belkin.com/uk
IZLAND	800 8534	http://www.belkin.com/uk
ÍRORSZÁG	0818 55 50 06	http://www.belkin.com/uk
OLASZORSZÁG	02 - 69 43 02 51	http://www.belkin.com/it/support/tech
LUXEMBURG	34 20 80 8560	http://www.belkin.com/uk
HOLLANDIA	0900 - 040 07 90 €0,10 percenként	http://www.belkin.com/nl
NORVÉGIA	815 00 287	http://www.belkin.com/uk
LENGYELORSZÁG	00800 - 441 17 37	http://www.belkin.com/uk
PORTUGÁLIA	707 200 676	http://www.belkin.com/uk
OROSZORSZÁG	495 580 9541	http://www.belkin.com/uk
DÉL-AFRIKA	0800 - 99 15 21	http://www.belkin.com/uk
SPANYOLORSZÁG	902 - 02 43 66	http://www.belkin.com/es/support/tech
SVÉDORSZÁG	07 - 71 40 04 53	http://www.belkin.com/se/support/tech
SVÁJC	08 - 48 00 02 19	http://www.belkin.com/uk
EGYESÜLT KIRÁLYSÁG	0845 - 607 77 87	http://www.belkin.com/uk
EGYÉB ORSZÁGOK	+44 - 1933 35 20 00	

Információk

EU FIGYELMEZTETÉS

Az F8T016 és F8T017 típusú Bluetooth készülék megfelel az 1995/5/EK számú EK Irányelvnek és az abban foglalt besorolásnak megfelelő CE jelzéssel rendelkezik.

Ezek a termékek bevizsgálásra kerülnek és megfelelnek a hozzájuk tartozó Megfelelőségi Nyilatkozatban szereplő szabványok előírásainak.



Restricted Use in Certain Countries.....Class 2 Equipment

For information on product disposal please refer to <http://environmental.belkin.com>



BELKIN®

www.belkin.com

Belkin műszaki támogatás

Európa: www.belkin.com/support

Belkin Ltd.Express Business Park, Shipton Way
Rushden, NN10 6GL,
Nagy-Britannia
+44 (0) 1933 35 2000
+44 (0) 1933 31 2000 fax

Belkin B.V.
Boeing Avenue 333
1119 PH Schiphol-Rijk, Hollandia
+31 (0) 20 654 7300
+31 (0) 20 654 7349 fax

Belkin GmbH
Hanebergstraße 2,
80637 Munich, Németország
+49 (0) 89 143405 0
+49 (0) 89 143405 100 fax

Belkin SAS
130 rue de Silly
92100 Boulogne Billancourt, Franciaország
+33 (0) 1 41 03 14 40
+33 (0) 1 41 31 01 72 fax

Belkin Iberia
C/ Anabel Segura, 10 planta baja, Of. 2
28108, Alcobendas, Madrid, Spanyolország
+34 91 791 23 00
+34 91 490 23 35 fax

© 2008 Belkin International, Inc. Minden jog fenntartva. Minden kereskedelmi megnevezés a felsorolt illető gyártók bejegyzett védjegye. A *Bluetooth* név és a *Bluetooth* védjegye a *Bluetooth SIG, Inc.* tulajdonát képezik és azokat a Belkin International, Inc. engedéllyel használja. A Mac, a Mac OS és az Apple védjegyek az Apple, Inc. USA-ban és más országokban bejegyzett védjegyei. A Windows és a Windows Vista a Microsoft Corporation bejegyzett védjegye vagy védjegye az Egyesült Államokban és/vagy más országokban.

BELKIN®

Stručná instalační příručka

Bluetooth® USB adaptér



EN

FR

DE

NL

ES

IT

PT

SV

GR

CZ

PL

HU

SK

TU

RU

RO

Úvod

Požiadavky na počítačový systém

- Počítač typu PC, rýchlosť procesora 200 MHz alebo viac
- Pamäť: 64 MB alebo viac, odporúča sa 128 MB
- Jeden dostupný port USB (verzia USB 1.1 alebo 2.0)
- Windows® 98 SE, Me, 2000, XP a Vista®

Mac® Systémové požiadavky

- Jeden dostupný port USB (verzia USB 1.1 alebo 2.0)
- Mac OS® X v10.2 alebo novší*

Obsah balenia

- *Bluetooth* USB adaptér
- CD-ROM s inštaláčnym softvérom a dokumentáciou

*Ovládač a softvér pre systém Mac OS X poskytuje spoločnosť Apple®

Inštalácia softvéru

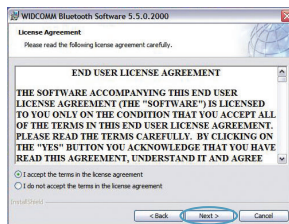
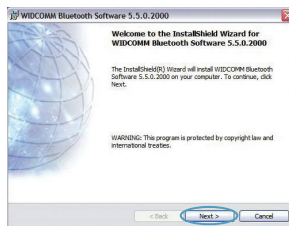
Inštalácia softvéru v systémoch Windows 98 SE, Me, 2000, XP a Vista

Pri inštalácii softvéru pre adaptér USB postupujte podľa pokynov uvedených nižšie:

Poznámka: Postup inštalácie v systémoch Windows XP alebo Windows Vista sa môže trochu líšiť od postupu v systémoch Windows 98 SE, Me a 2000. Tieto pokyny sa vzťahujú na počítača so systémom Windows XP.

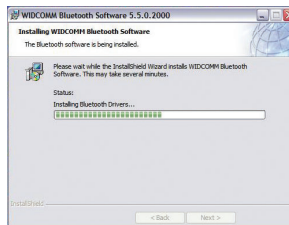
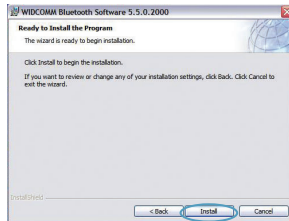
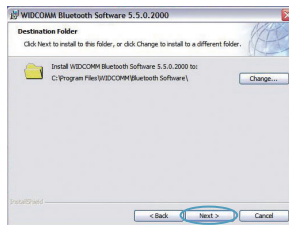
Poznámka: Adaptér USB nepripájajte k portu USB pred inštaláciou softvéru.

1. Vložte disk CD-ROM s inštaláčnym softvérom do jednotky CD-ROM počítača.
2. Po výbere „install software“ (inštalovať softvér) z menu sa spustí inštalácia.
3. Zobrazí sa okno „Software InstallShield Wizard“ (Sprievodca inštaláciou softvéru InstallShield). Kliknutím na tlačidlo „Next“ (Ďalej) spustíte inštaláciu.
4. Zvolením možnosti „I accept the terms in the license agreement“ (Súhlasím s podmienkami licenčnej zmluvy) odsúhlasíte licenčnú zmluvu. Pokračujte kliknutím na tlačidlo „Next“ (Ďalej).



Inštalácia softvéru

5. Zvoľte umiestnenie na pevnom disku, do ktorého sa nainštalujú súbory softvéru. Odporúča sa nainštalovať softvér do predvoleného adresára „C:\Program Files\WIDCOMM\Bluetooth Software“. Pokračujte kliknutím na tlačidlo „Next“ (Ďalej).
6. Potvrďte, že softvér k zariadeniu je pripravený na inštaláciu a kliknite na tlačidlo „Install“ (Inštalovať).
7. Sprievodca inštaláciou InstallShield Wizard začne inštalovať softvér Belkin *Bluetooth*. **Prosíme o strpenie, môže to trvať až päť minút.**



Inštalácia softvéru

8. Počas inštalácie sa môže zobraziť výzva, aby ste vložili adaptér USB. Ak adaptér USB práve nie je pripojený k počítaču, môžete ho pripojiť k požadovanému portu USB a pokračovať kliknutím na tlačidlo „OK“.



9. Potvrďte ukončenie inštalácie softvéru kliknutím na „Finish“ (Koniec).



Konfigurácia Bluetooth

Pred prvým použitím USB adaptéra so zariadeniami s rozhraním *Bluetooth* je potrebné nastaviť *Bluetooth* a spustiť sprievodcu výberom zariadení *Bluetooth*.

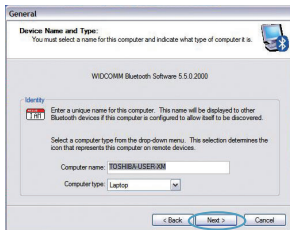
1. Dvakrát kliknite na ikonu *Bluetooth Places* (Miesta Bluetooth) na ploche alebo na ikonu *Bluetooth* na paneli úloh.



2. Zobrazí sa sprievodca konfiguráciou *Bluetooth*. Kliknite na tlačidlo „Next“ (Ďalej).

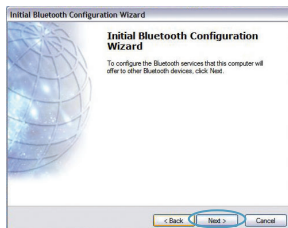


3. Uveďte názov počítača, ktorý sa bude zobrazovať v iných zariadeniach *Bluetooth* a kliknite na „Next“ (Ďalej).

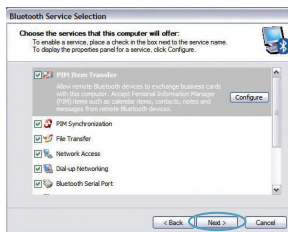


Konfigurácia Bluetooth

4. Zobrazí sa sprievodca počiatočnou konfiguráciou *Bluetooth*. Kliknite na tlačidlo „Next“ (Ďalej).



5. Vyberte služby *Bluetooth*, ktoré chcete mať nainštalované vo svojom počítači. Odporúčame vám nechať predvolené nastavenia nezmenené a kliknúť opäť na „Next“ (Ďalej).



Bluetooth je dokončená.

Pokračujte kliknutím na „Next“ (Ďalej) a pripojte svoje zariadenia s rozhraním *Bluetooth*.

Kliknutím na „Skip“ (Preskočiť) sprievodcu konfiguráciou zatvoríte.



Informácie

Bezplatná technická podpora* *Môžu byť účtované vnútroštátne poplatky

www.belkin.com

Ďalšie informácie o podpore nájdete na webovej adrese www.belkin.com v časti o -technickej podpore. Ak sa chcete obrátiť na technickú podporu telefonicky, zavolajte na príslušné číslo uvedené v zozname nižšie*.

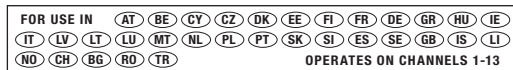
Krajina	Číslo	Internetová adresa
RAKÚSKO	08 - 20 20 07 66	http://www.belkin.com/uk
BELGICKO	07 07 00 073	http://www.belkin.com/nl
ČESKÁ REPUBLIKA	23 900 04 06	http://www.belkin.com/uk
DÁNSKO	701 22 403	http://www.belkin.com/uk
FÍNSKO	00800 - 22 35 54 60	http://www.belkin.com/uk
FRANCÓZSKO	08 - 25 54 00 26	http://www.belkin.com/fr
NEMECKO	0180 - 500 57 09	http://www.belkin.com/de
GRÉCKO	00800 - 44 14 23 90	http://www.belkin.com/uk
MAĎARSKO	06 - 17 77 49 06	http://www.belkin.com/uk
ISLAND	800 8534	http://www.belkin.com/uk
ÍRSKO	0818 55 50 06	http://www.belkin.com/uk
TALIANSKO	02 - 69 43 02 51	http://www.belkin.com/it/support/tech
LUXEMBURSKO	34 20 80 8560	http://www.belkin.com/uk
HOLANDSKO	0900 - 040 07 90 €za minútu	http://www.belkin.com/nl
NÓRSKO	815 00 287	http://www.belkin.com/uk
POĽSKO	00800 - 441 17 37	http://www.belkin.com/uk
PORTUGALSKO	707 200 676	http://www.belkin.com/uk
RUSKO	495 580 9541	http://www.belkin.com/uk
JUŽNÁ AFRIKA	0800 - 99 15 21	http://www.belkin.com/uk
ŠPANIELSKO	902 - 02 43 66	http://www.belkin.com/es/support/tech
ŠVÉDSKO	07 - 71 40 04 53	http://www.belkin.com/se/support/tech
ŠVAJČARSKO	08 - 48 00 02 19	http://www.belkin.com/uk
VEĽKÁ BRITÁNIA	0845 - 607 77 87	http://www.belkin.com/uk
INÉ KRAJINY	+44 - 1933 35 20 00	

Informácie

UPOZORNENIE EÚ

Zariadenia Bluetooth F8T016 a F8T017 spĺňajú požiadavky smernice EÚ 1995/5/EC a majú označenie CE v súlade s ich klasifikáciou.

Tieto výrobky boli testované a spĺňajú štandardy uvedené v príslušnom Prehlásení o zhode.



Restricted Use in Certain Countries.....Class 2 Equipment

For information on product disposal please refer to <http://environmental.belkin.com>



BELKIN®

www.belkin.com

Technická podpora spoločnosti Belkin
Európa: www.belkin.com/support

Belkin Ltd.

Express Business Park, Shipton WayRushden,
NN10 6GL, Veľká Británia
+44 (0) 1933 35 2000
+44 (0) 1933 31 2000 fax

Belkin B.V.

Boeing Avenue 3331119 PH Schiphol-Rijk, Holandsko
+31 (0) 20 654 7300
+31 (0) 20 654 7349 fax

Belkin GmbH

Hanebergstraße 2,80637 München, Nemecko
+49 (0) 89 143405 0
+49 (0) 89 143405 100 fax

Belkin SAS

130 rue de Silly92100 Boulogne Billancourt, Francúzsko
+33 (0) 1 41 03 14 40
+33 (0) 1 41 31 01 72 fax

Belkin Iberia

C/ Anabel Segura, 10 planta baja, Of. 2
28108, Alcobendas, Madrid, Španielsko
+34 91 791 23 00
+34 91 490 23 35 fax

© 2008 Belkin International, Inc. Všetky práva vyhradené. Všetky obchodné názvy sú registrovanými ochrannými známkami príslušných výrobcov. Názov *Bluetooth* a ochranné známky *Bluetooth* sú majetkom spoločnosti *Bluetooth SIG, Inc.* a spoločnosť *Belkin International, Inc.* ich používa v rámci licencie. *Mac, Mac OS* a *Apple* sú ochrannými známkami spoločnosti *Apple Inc.*, registrovanými v USA a iných krajinách. *Windows* a *Windows Vista* sú registrované ochranné známky alebo ochranné známky spoločnosti *Microsoft Corporation* v USA a/alebo v iných krajinách.

BELKIN.

Hızlı Kurulum Kılavuzu
Bluetooth® USB Bağdaştırıcı



EN

FR

DE

NL

ES

IT

PT

SV

GR

CZ

PL

HU

SK

TU

RU

RO

Giriş

PC Sistem Gereksinimleri

- PC uyumlu bilgisayar, 200 MHz veya üzeri CPU hızı
- Bellek: 64MB veya üzeri, 128MB önerilir
- Bir kullanılabilir USB girişı, USB 1.1 veya 2.0
- Windows® 98 SE, Me, 2000, XP ve Vista®

Mac® Sistem Gereksinimleri

- Bir kullanılabilir USB girişı, USB 1.1 veya 2.0
- Mac OS® X v10.2 veya üzeri*

Ürün İçeriğı

- *Bluetooth* USB Bağdařtırıcı
- Kurulum yazılımı ve dokümantasyon için CD-ROM

*Apple®

Yazılım Kurulumu

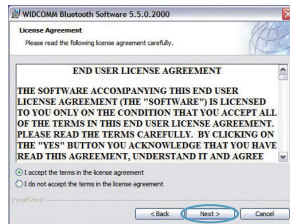
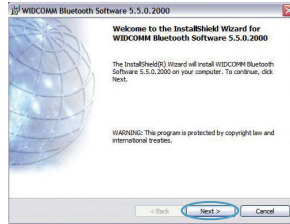
Windows 98 SE, Me, 2000, XP ve Vista için Yazılım Kurulumu

USB Bağdaştırıcı yazılımını kurmak için aşağıdaki talimatları izleyin:

Not: Windows XP veya Windows Vista için kurulum süreci, Windows 98 SE, Me ve 2000'den biraz farklı görünebilir. Bu talimatlar Windows XP bilgisayarı temel alır.

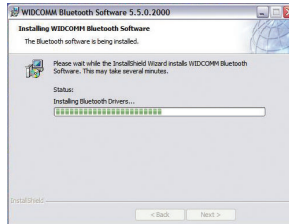
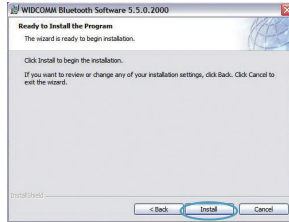
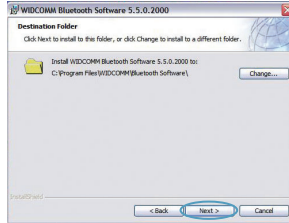
Not: USB Bağdaştırıcı yazılım kurulumundan önce USB giriş takmayın.

1. Yazılım kurulum CD-ROM'unu PC'nin CD-ROM sürücüsüne takın.
2. Kurulumu başlatmak için menüden "install software"i (yazılımı kur) seçin.
3. "Software InstallShield Wizard" (Yazılım Kurulum Sihirbazı) penceresi belirir. Kurulum sürecine başlamak için "Next"i (İleri) tıklayın.
4. Lisans sözleşmesini kabul etmek için "I accept the terms in the license agreement" (Lisans sözleşmesindeki koşulları kabul ediyorum) ibaresini seçin. Devam etmek için "Next"i (İleri) tıklayın.



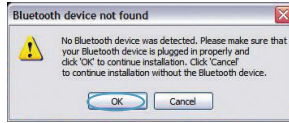
Yazılım Kurulumu

5. Yazılım dosyalarının sabit sürücünüzde kurulacağı yeri belirleyin. Yazılımı varsayılan dizin "C:\Program Files\WIDCOMM\Bluetooth Software\"e kurmanız önerilir. Devam etmek için "Next"i (İleri) tıklayın.
6. Cihaz yazılımının kurulumuna hazır olduğunuzu doğrulayın ve "Install"u (Kur) tıklayın.
7. Kurulum Sihirbazı, Belkin *Bluetooth* Yazılımını kurmaya başlayacaktır. **İşlem yaklaşık beş dakika sürebilir, lütfen bekleyin.**



Yazılım Kurulumu

8. Kurulum işlemi sırasında USB Bağdaştırıcınızı takmak için uyarılacaksınız. USB Bağdaştırıcınızı bu sırada bilgisayarınıza takılmazsa, istenen USB girişine takabilir, ardından devam etmek için "OK"a (Tamam) tıklayabilirsiniz.



9. Yazılım kurulumunun tamamlandığını doğrulayın ve "Finish"e (Son) tıklayın.



Bluetooth Yapılandırması

Bluetooth teknolojisiyle donatılmış cihazlarınızı kullanmaya başlamak için Bluetooth ayarlarınızı yapılandırmanız ve Bluetooth Cihaz Seçimi sihirbazını çalıştırmanız gerekir.

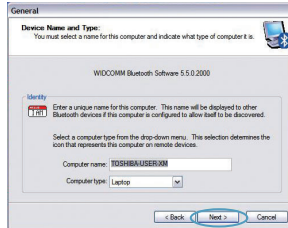
1. Masaüstü ekranınızdaki Bluetooth Yerleri ikonuna veya sistem tepesindeki Bluetooth ikonuna tıklayın.



2. Bluetooth Yapılandırma Sihirbazı belirecektir. "Next"i (İleri) tıklayın.

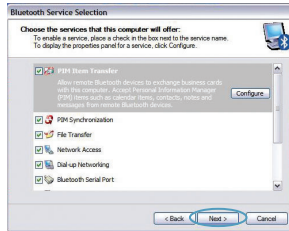


3. Diğer Bluetooth cihazları açısından görüntülenecek bilgisayar adını belirtin ve "Next"i (İleri) tıklayın.



Bluetooth Yapılandırması

4. Başlangıç *Bluetooth* Yapılandırma Sihirbazı belirecektir. "Next"i (ileri) tıklayın.
5. Bilgisayarınızda bulunmasını istediğiniz *Bluetooth* hizmetlerini seçin. Varsayılan ayarları olduğu gibi bırakmanızı öneririz ve "Next"i (ileri) tıklayın.



Bluetooth kurulumu tamamlanmıştır.

Devam etmek ve *Bluetooth* teknoloji ile donatılmış cihazlarınızın bağlanmak için "Next"i (ileri) tıklayın.

Yapılandırma Sihirbazını kapatmak için "Skip"i (Atla) tıklayın.



Bilgiler

Ücretsiz Teknik Destek* *Şehiriçi arama tarifi uygulanabilir

www.belkin.com

Web sitemiz www.belkin.com da teknik-destek alanında daha fazla teknik destek bilgisi bulabilirsiniz. Telefonla teknik destek almak istiyorsanız, lütfen aşağıdaki listeden gereksinim duyduğunuz numarayı seçerek arayın*.

Ülke	Numara	İnternet adresi
AVUSTURYA	08 - 20 20 07 66	http://www.belkin.com/uk
BELÇİKA	07 07 00 073	http://www.belkin.com/nl
ÇEK CUMHURİYETİ	23 900 04 06	http://www.belkin.com/uk
DANİMARKA	701 22 403	http://www.belkin.com/uk
FİNLANDIYA	00800 - 22 35 54 60	http://www.belkin.com/uk
FRANSA	08 - 25 54 00 26	http://www.belkin.com/fr
ALMANYA	0180 - 500 57 09	http://www.belkin.com/de
YUNANİSTAN	00800 - 44 14 23 90	http://www.belkin.com/uk
MACARİSTAN	06 - 17 77 49 06	http://www.belkin.com/uk
İZLANDA	800 8534	http://www.belkin.com/uk
İRLANDA	0818 55 50 06	http://www.belkin.com/uk
İTALYA	02 - 69 43 02 51	http://www.belkin.com/it/support/tech
LÜKSEMBURG	34 20 80 8560	http://www.belkin.com/uk
HOLLANDA	0900 - 040 07 90 €	http://www.belkin.com/nl
NORVEÇ	815 00 287	http://www.belkin.com/uk
POLONYA	00800 - 441 17 37	http://www.belkin.com/uk
PORTEKİZ	707 200 676	http://www.belkin.com/uk
RUSSİA	495 580 9541	http://www.belkin.com/uk
GÜNEY AFRIKA	0800 - 99 15 21	http://www.belkin.com/uk
İSPANYA	902 - 02 43 66	http://www.belkin.com/es/support/tech
İSVEÇ	07 - 71 40 04 53	http://www.belkin.com/se/support/tech
İSVİÇRE	08 - 48 00 02 19	http://www.belkin.com/uk
BİRLİK KRALLIK	0845 - 607 77 87	http://www.belkin.com/uk
DİĞER ÜLKELER	+44 - 1933 35 20 00	

Bilgiler

AB UYARISI

Bluetooth cihazı F8T016 & F8T017, AT Direktifi 1995/5/EC koşullarına uymaktadır ve sınıflandırmalarına göre CE damgalıdır.

Bu ürünler İlgili Uygunluk Beyanında belirtilen standartlara göre test edilmiştir ve koşullarını sağlamaktadır.



Restricted Use in Certain Countries.....Class 2 Equipment



For information on product disposal please refer to <http://environmental.belkin.com>

BELKIN®

www.belkin.com

Belkin Teknik DestekAvrupa:
www.belkin.com/support

Belkin Ltd.

Express Business Park,
Shipton WayRushden,
NN10 6GL, Birleşik Krallık
+44 (0) 1933 35 2000
+44 (0) 1933 31 2000 faks

Belkin B.V.

Boeing Avenue 333
1119 PH Schiphol-Rijk, Hollanda
+31 (0) 20 654 7300
+31 (0) 20 654 7349 faks

Belkin GmbH

Hanebergstraße 2,80637 Münih, Almanya
+49 (0) 89 143405 0
+49 (0) 89 143405 100 faks

Belkin SAS

130 rue de Silly92100 Boulogne Billancourt, Fransa
+33 (0) 1 41 03 14 40
+33 (0) 1 41 31 01 72 faks

Belkin Iberia

C/ Anabel Segura, 10 planta baja, Of. 2
28108, Alcobendas, Madrid, İspanya
+34 91 791 23 00
+34 91 490 23 35 faks

© 2008 Belkin International, Inc. Tüm hakları saklıdır. Tüm ticari isimler listelenen ilgili üreticilerin tescilli markalarıdır. *Bluetooth* adının ve *Bluetooth* ticari markalarının sahibi *Bluetooth* SIG, Inc'dir ve Belkin International, Inc. tarafından lisans kapsamında kullanılır. Mac, Mac OS ve Apple, Apple Inc. şirketinin, ABD ve diğer ülkelerde kayıtlı ticari markalarıdır. Windows ve Windows Vista, Microsoft Corporation'ın Amerika Birleşik Devletleri'nde ve/veya diğer ülkelerde kayıtlı ticari markaları veya ticari markalarıdır.

BELKIN®

Руководство к быстрой установке

***Bluetooth®* USB-адаптер**



EN

FR

DE

NL

ES

IT

PT

SV

GR

CZ

PL

HU

SK

TU

RU

RO

Введение

Системные требования к компьютеру

- PC-совместимый компьютер, тактовая частота процессора от 200 МГц и выше
- Память: 64 Мб и выше (рекомендуется 128 Мб)
- Один свободный USB-порт, (USB 1.1 или 2.0)
- ОС Windows® 98 SE, Me, 2000, XP и Vista®

Mac®

- Один свободный USB-порт, (USB 1.1 или 2.0)
- Mac OS® X v10.2 или более высокая версия*

Содержимое комплекта

- *Bluetooth* USB-адаптер
 - Дисковод для компакт-дисков с программами установки и документацией
- *Программное обеспечение и драйвер Mac OS X от компании Apple®

Установка программного обеспечения

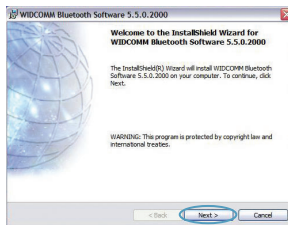
Установка программного обеспечения для Windows 98 SE, Me, 2000, XP и Vista

Для установки программного обеспечения для USB-адаптера выполните следующие инструкции:

Примечание: Процесс установки для Windows XP или Windows Vista может несколько отличаться от Windows 98 SE, Me и 2000. Данные инструкции рассчитаны на компьютер с установленной системой Windows XP.

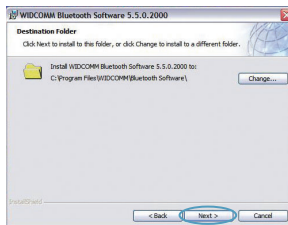
Примечание: Не подключайте USB-адаптер к USB-порту до установки программного обеспечения.

1. Вставьте компакт-диск для установки программного обеспечения в привод компьютера для компакт-дисков.
2. Чтобы начать установку, выберите в меню "install software" (установить программное обеспечение).
3. Появится окно "Software InstallShield Wizard" (Мастер установки InstallShield). Чтобы начать установку, щелкните "Next" (Далее).
4. Чтобы принять лицензионное соглашение, поставьте отметку рядом со строкой "I accept the terms in the license agreement" (Я принимаю условия лицензионного соглашения). Чтобы продолжить, щелкните "Next" ("Далее").

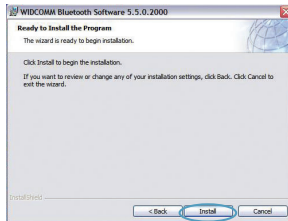


Установка программного обеспечения

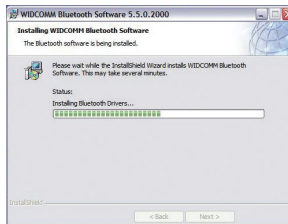
5. Укажите место на жестком диске, куда будут установлены файлы программного обеспечения. Рекомендуется устанавливать ПО в каталог по умолчанию "C:\Program Files\WIDCOMM\Bluetooth Software". Чтобы продолжить, щелкните "Next" ("Далее").



6. Убедитесь, что программное обеспечение для устройства готово к установке, и щелкните кнопку "Install" (Установить).



7. Мастер установки начнет устанавливать InstallShield для Bluetooth от компании Belkin. Этот процесс может занять несколько минут. Пожалуйста, подождите.



Установка программного обеспечения

8. В ходе установки вам будет предложено вставить USB-адаптер. Если USB-адаптер еще не подключен к компьютеру в этот момент, подключите его к любому USB-порту, а затем щелкните "OK", чтобы продолжить.



9. Подтвердите завершение установки и щелкните "Finish" (Готово).



Настройка Bluetooth

Чтобы начать применять USB-адаптер для устройств, поддерживающих технологию *Bluetooth*, необходимо настроить параметры *Bluetooth* и запустить мастер выбора устройств *Bluetooth*.

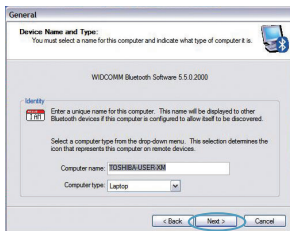
1. Дважды щелкните значок *Bluetooth* на рабочем столе или значок *Bluetooth* на панели задач.



2. На экране появится мастер настройки *Bluetooth*. Щелкните "Next" ("Далее").



3. Укажите имя компьютера, которое будет отображаться для других устройств *Bluetooth*, и щелкните "Next" (Далее).



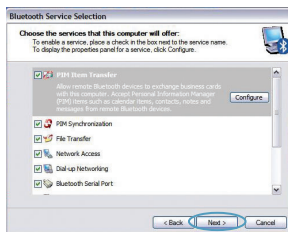
Настройка Bluetooth

4. На экране появится мастер начальной настройки *Bluetooth*. Щелкните "Next" ("Далее").
5. Выберите службы *Bluetooth*, которые вы хотите установить на своем компьютере. Рекомендуется оставить настройки по умолчанию, а затем щелкнуть "Next" (Далее).

Bluetooth завершена.

Щелкните "Next" (Далее), чтобы продолжить и подключить устройства, использующие технологию *Bluetooth*.

Чтобы закрыть мастер настройки, щелкните "Skip" (Пропустить).



Информация

Бесплатная техническая поддержка* *Звонки могут оплачиваться по тарифам страны

www.belkin.com

Дополнительные сведения о технической поддержке можно найти на нашем сайте www.belkin.com в разделе -технической поддержки. Чтобы связаться со службой технической поддержки по телефону, позвоните по одному из указанных ниже номеров*.

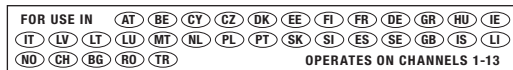
Страна	Номер	Адрес в Интернете
АВСТРИЯ	08 - 20 20 07 66	http://www.belkin.com/uk
БЕЛЬГИЯ	07 07 00 073	http://www.belkin.com/nl
ЧЕШСКАЯ РЕСПУБЛИКА	23 900 04 06	http://www.belkin.com/uk
ДАНИЯ	701 22 403	http://www.belkin.com/uk
ФИНЛЯНДИЯ	00800 - 22 35 54 60	http://www.belkin.com/uk
ФРАНЦИЯ	08 - 25 54 00 26	http://www.belkin.com/fr
ГЕРМАНИЯ	0180 - 500 57 09	http://www.belkin.com/de
ГРЕЦИЯ	00800 - 44 14 23 90	http://www.belkin.com/uk
ВЕНГРИЯ	06 - 17 77 49 06	http://www.belkin.com/uk
ИСЛАНДИЯ	800 8534	http://www.belkin.com/uk
ИРЛАНДИЯ	0818 55 50 06	http://www.belkin.com/uk
ИТАЛИЯ	02 - 69 43 02 51	http://www.belkin.com/it/support/tech
ЛЮКСЕМБУРГ	34 20 80 8560	http://www.belkin.com/uk
НИДЕРЛАНДЫ	0900 - 040 07 90 €0,10 / мин.	http://www.belkin.com/nl
НОРВЕГИЯ	815 00 287	http://www.belkin.com/uk
ПОЛЬША	00800 - 441 17 37	http://www.belkin.com/uk
ПОРТУГАЛИЯ	707 200 676	http://www.belkin.com/uk
РОССИЯ	495 580 9541	http://www.belkin.com/uk
ЮАР	0800 - 99 15 21	http://www.belkin.com/uk
ИСПАНИЯ	902 - 02 43 66	http://www.belkin.com/es/support/tech
ШВЕЦИЯ	07 - 71 40 04 53	http://www.belkin.com/se/support/tech
ШВЕЙЦАРИЯ	08 - 48 00 02 19	http://www.belkin.com/uk
ВЕЛИКОБРИТАНИЯ	0845 - 607 77 87	http://www.belkin.com/uk
ДРУГИЕ СТРАНЫ	+44 - 1933 35 20 00	

Информация

ЗАЯВЛЕНИЕ СООТВЕТСТВИЯ СТАНДАРТАМ ЕС

Bluetooth аппараты F8T016 и F8T017 соответствуют требованиям Директивы ЕС 1995/5/ЕС и маркированы знаком СЕ в соответствии с их классификацией.

Данные продукты испытаны и соответствуют требованиям стандартов, указанных в соответствующих Декларациях Соответствия.



Restricted Use in Certain Countries.....Class 2 Equipment

For information on product disposal please refer to <http://environmental.belkin.com>



BELKIN®

www.belkin.com

Служба технической поддержки Belkin

Европа: www.belkin.com/support

Belkin Ltd.

Express Business Park, Shipton Way
Rushden, NN10 6GL, United Kingdom

+44 (0) 1933 35 2000

Факс: +44 (0) 1933 31 2000

Belkin B.V.

Boeing Avenue 333
1119 PH Schiphol-Rijk, Netherlands

+31 (0) 20 654 7300

Факс: +31 (0) 20 654 7349

Belkin GmbH

Hanebergstraße 2,
80637 Munich, Germany
+49 (0) 89 143405 0

Факс: +49 (0) 89 143405 100

Belkin SAS

130 rue de Silly
92100 Boulogne Billancourt, France

+33 (0) 1 41 03 14 40

Факс: +33 (0) 1 41 31 01 72

Belkin Iberia

C/ Anabel Segura, 10 planta baja, Of. 2
28108, Alcobendas, Madrid, Spain

+34 91 791 23 00

Факс: +34 91 490 23 35

© 2008 Belkin International, Inc. Все права защищены. Все торговые названия являются зарегистрированными товарными знаками соответствующих производителей. Название *Bluetooth* и товарные знаки *Bluetooth* принадлежат *Bluetooth SIG, Inc.* и используются корпорацией Belkin согласно лицензии. Mac, Mac OS и Apple являются товарными знаками компании Apple Computer, Inc., зарегистрированной в США и других странах. Windows и Windows Vista являются зарегистрированными торговыми знаками или торговыми знаками корпорации Microsoft в США и (или) других странах.

BELKIN.

Ghid de instalare rapidă
Adaptor USB Bluetooth



EN

FR

DE

NL

ES

IT

PT

SV

GR

CZ

PL

HU

SK

TU

RU

RO

Introducere

Cerințe de sistem pentru computer

- Computer compatibil PC, cu viteză a procesorului de cel puțin 200 MHz
- Memorie: cel puțin 64 MB, 128 MB recomandat
- Un port USB recomandat, USB 1.1 sau 2.0
- Windows® 98 SE, Me, 2000, XP și Vista®

Cerințe de sistem pentru Mac®

- Un port USB recomandat, USB 1.1 sau 2.0
- Mac OS® X v10.2 sau mai recent*

Conținutul pachetului de produs

- *Adaptor USB Bluetooth*
 - CD-ROM pentru instalarea pachetului software și a documentației
- *Driver Mac OS X și pachet software furnizat de Apple®

Configurarea pachetului software

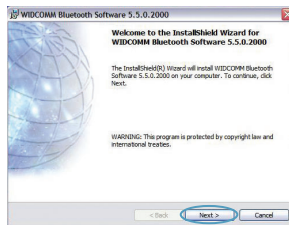
Configurarea pachetului software pentru Windows 98 SE, Me, 2000, XP și Vista

Pentru a instala pachetul software pentru Adaptorul USB, urmați instrucțiunile de mai jos:

Notă: Este posibil ca procesul de instalare pentru Windows XP sau Windows Vista să arate diferit de cel pentru Windows 98 SE, Me și 2000. Aceste instrucțiuni se bazează pe un computer pe care rulează Windows XP.

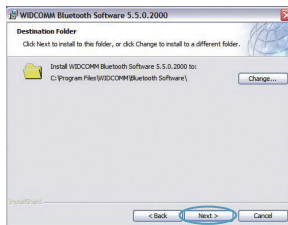
Notă: Nu introduceți Adaptorul USB în portul USB înainte de instalarea pachetului software.

1. Introduceți CD-ul cu pachetul software de instalare în unitatea CD-ROM a computerului.
2. Selectați „install software” (instalare software) din meniu pentru a începe instalarea.
3. Se afișează fereastra „Software InstallShield Wizard”. Faceți clic pe „Next” (Următorul) pentru a începe procesul de instalare.
4. Alegeți „I accept the terms in the license agreement” (Accept condițiile din acest acord de licență) pentru a accepta prevederile acordului. Faceți clic pe „Next” (Următorul) pentru a continua.

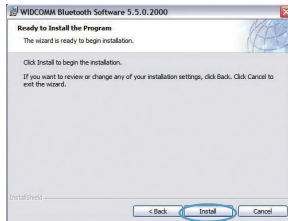


Configurarea pachetului software

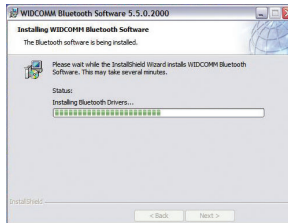
5. Specificați locul de pe hard disk unde să fie instalate fișierele pachetului software. Se recomandă instalarea fișierelor în directorul prestabilit „C:\Program Files\WIDCOMM\Bluetooth Software\”. Faceți clic pe „Next” (Următorul) pentru a continua.



6. Confirmați că pachetul software este pregătit pentru a fi instalat și faceți clic pe „Install” (Instalare).



7. Asistentul InstallShield va începe instalarea pachetului software *Bluetooth* Belkin. **Acest proces poate dura până la cinci minute, vă rugăm să așteptați.**



Configurarea pachetului software

8. În timpul procesului de instalare, este posibil să vi se ceară să introduceți Adaptorul USB. Dacă Adaptorul USB nu este conectat în prezent la computer, îl puteți introduce în portul USB dorit, apoi faceți clic pe „OK” pentru a continua.
9. Confirmați finalizarea instalării pachetului software și faceți clic pe „Finish” (Terminare).



Bluetooth Configurarea

Pentru a începe utilizarea Adaptorului USB cu dispozitivele care acceptă tehnologia *Bluetooth*, va trebui să configurați setările *Bluetooth* și să rulați asistentul de selectare a dispozitivelor *Bluetooth*.

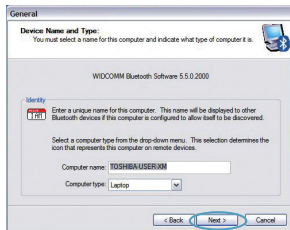
1. Faceți dublu clic pe pictograma *Bluetooth* Plăces de pe spațiul de lucru sau pe pictograma *Bluetooth* din bara de sistem.



2. Se va afișa asistentul de configurare *Bluetooth*. Faceți clic pe „Next” (Următorul).

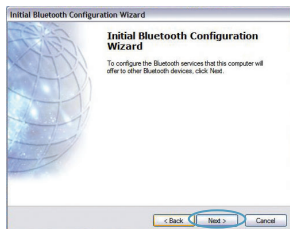


3. Specificați numele computerului care va fi afișat pentru alte dispozitive *Bluetooth* și faceți clic pe „Next” (Următorul).

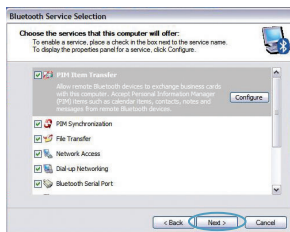


Bluetooth Configurarea

4. Se va afișa asistentul de configurare *Bluetooth* inițial. Faceți clic pe „Next” (Următorul).



5. Alegeți serviciile *Bluetooth* pe care doriți să le aveți disponibile pe computer. Recomandăm folosirea setărilor prestabilite și faceți clic pe „Next” (Următorul).



Bluetooth este acum finalizată.

Faceți clic pe „Next” (Următorul) pentru a continua și a vă conecta la dispozitivele care acceptă tehnologia *Bluetooth*.

Faceți clic pe „Skip” (Următorul) pentru a închide asistentul de configurare.



Informații

Asistență tehnică gratuită* *Este posibil să se aplice taxele de apel naționale

www.belkin.com

Puteți găsi informații suplimentare de asistență pe site-ul nostru de Web www.belkin.com în secțiunea de asistență-tehnică. Dacă doriți să contactați telefonic serviciul de asistență tehnică, vă rugăm să apelați numărul dorit din lista de mai jos*.

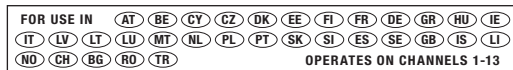
Tară	Număr	Adresă Internet
AUSTRIA	08 - 20 20 07 66	http://www.belkin.com/uk
BELGIA	07 07 00 073	http://www.belkin.com/nl
REPUBLICA CEHĂ	23 900 04 06	http://www.belkin.com/uk
DANEMARCA	701 22 403	http://www.belkin.com/uk
FINLANDA	00800 - 22 35 54 60	http://www.belkin.com/uk
FRANȚA	08 - 25 54 00 26	http://www.belkin.com/fr
GERMANIA	0180 - 500 57 09	http://www.belkin.com/de
GRECIA	00800 - 44 14 23 90	http://www.belkin.com/uk
UNGARIA	06 - 17 77 49 06	http://www.belkin.com/uk
ISLANDA	800 8534	http://www.belkin.com/uk
IRLANDA	0818 55 50 06	http://www.belkin.com/uk
ITALIA	02 - 69 43 02 51	http://www.belkin.com/it/support/tech
LUXEMBURG	34 20 80 8560	http://www.belkin.com/uk
OLANDA	0900 - 040 07 90 0,10 EUR pe minut	http://www.belkin.com/nl
NORVEGIA	815 00 287	http://www.belkin.com/uk
POLONIA	00800 - 441 17 37	http://www.belkin.com/uk
PORTUGALIA	707 200 676	http://www.belkin.com/uk
RUSIA	495 580 9541	http://www.belkin.com/uk
AFRICA DE SUD	0800 - 99 15 21	http://www.belkin.com/uk
SPANIA	902 - 02 43 66	http://www.belkin.com/es/support/tech
SUEDIA	07 - 71 40 04 53	http://www.belkin.com/se/support/tech
ELVEȚIA	08 - 48 00 02 19	http://www.belkin.com/uk
REGATUL UNIT AL MARI	0845 - 607 77 87	http://www.belkin.com/uk
ALTE ȚĂRI	+44 - 1933 35 20 00	

Informații

NOTIFICARE UE

Aparatele Bluetooth F8T016 și F8T017 respectă cerințele directivei CE 1995/5/CE și sunt marcate cu CE conform clasificării lor.

Aceste produse sunt testate și respectă cerințele standardelor menționate în declarațiile respective de conformitate.



Restricted Use in Certain Countries.....Class 2 Equipment

For information on product disposal please refer to <http://environmental.belkin.com>



BELKIN®

www.belkin.com

Asistență tehnică Belkin

Europa: www.belkin.com/support

Belkin Ltd.

Express Business Park, Shipton Way
Rushden, NN10 6GL, Regatul Unit al Marii Britanii

+44 (0) 1933 35 2000

+44 (0) 1933 31 2000 fax

Belkin B.V.

Boeing Avenue 333
1119 PH Schiphol-Rijk, Olanda

+31 (0) 20 654 7300

+31 (0) 20 654 7349 fax

Belkin GmbH

Hanebergstraße 2,
80637 Munchen, Germania

+49 (0) 89 143405 0

+49 (0) 89 143405 100 fax

Belkin SAS

130 rue de Silly
92100 Boulogne Billancourt, Franța

+33 (0) 1 41 03 14 40

+33 (0) 1 41 31 01 72 fax

Belkin Iberia

C/ Anabel Segura, 10 planta baja, Of. 2
28108, Alcobendas, Madrid, Spania

+34 91 791 23 00

+34 91 490 23 35 fax

© 2008 Belkin International, Inc. Toate drepturile rezervate. Toate numele comerciale sunt mărci comerciale înregistrate ale producătorilor respectivi menționați. Denumirea *Bluetooth* și mărcile comerciale *Bluetooth* sunt deținute de *Bluetooth SIG, Inc.* și sunt utilizate sub licență de Belkin International, Inc. Mac, Mac OS și Apple sunt mărci comerciale ale Apple Inc., înregistrate în S.U.A. și în alte țări. Windows și Windows Vista sunt fie mărci comerciale sau mărci comerciale înregistrate ale Microsoft Corporation în Statele Unite și/sau alte țări.

DECLARATION OF CONFORMITY WITH FCC RULES FOR ELECTROMAGNETIC COMPATIBILITY

We, Belkin International, Inc., of 501 West Walnut Street, Compton, CA 90220, declare under our sole responsibility that the product,

F8T016 / F8T017, to which this declaration relates, complies with Part 15 of the FCC Rules. Operation is subject to the following two conditions: (1) this device may not cause harmful interference, and (2) this device must accept any interference received, including interference that may cause undesired operation.

Caution: Exposure to Radio Frequency Radiation.

The radiated output power of this device is far below the FCC radio frequency exposure limits.

Nevertheless, the device shall be used in such a manner that the potential for human contact during normal operation is minimized.

When connecting an external antenna to the device, the antenna shall be placed in such a manner to minimize the potential for human contact during normal operation. In order to avoid the possibility of exceeding the FCC radio frequency exposure limits, human proximity to the antenna shall not be less than 20cm (8 inches) during normal operation.

Federal Communications Commission Notice

This equipment has been tested and found to comply with the limits for a Class B digital device, pursuant to Part 15 of the FCC Rules. These limits are designed to provide reasonable protection against harmful interference in a residential installation.

This equipment generates, uses, and can radiate radio frequency energy. If this equipment does cause harmful interference to radio or television reception, which can be determined by turning the equipment off and on, the user is encouraged to try and correct the interference by one or more of the following measures:

- Reorient or relocate the receiving antenna.
- Increase the distance between the equipment and the receiver.
- Connect the equipment to an outlet on a circuit different from that to which the receiver is connected.
- Consult the dealer or an experienced radio/TV technician for help.

Modifications

The FCC requires the user to be notified that any changes or modifications to this device that are not expressly approved by Belkin International, Inc., may void the user's authority to operate the equipment.

Warranty

Belkin International, Inc., Limited Lifetime Product Warranty

What this warranty covers.

Belkin International, Inc. ("Belkin") warrants to the original purchaser of this Belkin product that the product shall be free of defects in design, assembly, material, or workmanship.

What the period of coverage is.

Belkin warrants the Belkin product for the lifetime of the product.

What will we do to correct problems?

Product Warranty.

Belkin will repair or replace, at its option, any defective product free of charge (except for shipping charges for the product). Belkin reserves the right to discontinue any of its products without notice, and disclaims any limited warranty to repair or replace any such discontinued products. In the event that Belkin is unable to repair or replace the product (for example, because it has been discontinued), Belkin will offer either a refund or a credit toward the purchase of another product from Belkin.com in an amount equal to the purchase price of the product as evidenced on the original purchase receipt as discounted by its natural use.

What is not covered by this warranty?

All above warranties are null and void if the Belkin product is not provided to Belkin for inspection upon Belkin's request at the sole expense of the purchaser, or if Belkin determines that the Belkin product has been improperly installed, altered in any way, or tampered with. The Belkin Product Warranty does not protect against acts of God such as flood, earthquake, lightning, war, vandalism, theft, normal-use wear and tear, erosion, depletion, obsolescence, abuse, damage due to low voltage disturbances (i.e. brownouts or sags), non-authorized program, or system equipment modification or alteration.

Warranty

How to get service.

To get service for your Belkin product you must take the following steps:

1. Contact Belkin International, Inc., at 501 W. Walnut St., Compton CA 90220, Attn: Customer Service, or call (800)-223-5546, within 15 days of the Occurrence. Be prepared to provide the following information:

- a. The part number of the Belkin product.
 - b. Where you purchased the product.
 - c. When you purchased the product.
 - d. Copy of original receipt.
2. Your Belkin Customer Service Representative will then instruct you on how to forward your receipt and Belkin product and how to proceed with your claim.

Belkin reserves the right to review the damaged Belkin product. All costs of shipping the Belkin product to Belkin for inspection shall be borne solely by the purchaser. If Belkin determines, in its sole discretion, that it is impractical to ship the damaged equipment to Belkin, Belkin may designate, in its sole discretion, an equipment repair facility to inspect and estimate the cost to repair such equipment. The cost, if any, of shipping the equipment to and from such repair facility and of such estimate shall be borne solely by the purchaser. Damaged equipment must remain available for inspection until the claim is finalized. Whenever claims are settled, Belkin reserves the right to be subrogated under any existing insurance policies the purchaser may have.

Warranty

How state law relates to the warranty.

THIS WARRANTY CONTAINS THE SOLE WARRANTY OF BELKIN. THERE ARE NO OTHER WARRANTIES, EXPRESSED OR, EXCEPT AS REQUIRED BY LAW, IMPLIED, INCLUDING THE IMPLIED WARRANTY OR CONDITION OF QUALITY, MERCHANTABILITY OR FITNESS FOR A PARTICULAR PURPOSE, AND SUCH IMPLIED WARRANTIES, IF ANY, ARE LIMITED IN DURATION TO THE TERM OF THIS WARRANTY.

Some states do not allow limitations on how long an implied warranty lasts, so the above limitations may not apply to you.

IN NO EVENT SHALL BELKIN BE LIABLE FOR INCIDENTAL, SPECIAL, DIRECT, INDIRECT, CONSEQUENTIAL OR MULTIPLE DAMAGES SUCH AS, BUT NOT LIMITED TO, LOST BUSINESS OR PROFITS ARISING OUT OF THE SALE OR USE OF ANY BELKIN PRODUCT, EVEN IF ADVISED OF THE POSSIBILITY OF SUCH DAMAGES.

This warranty gives you specific legal rights, and you may also have other rights, which may vary from state to state. Some states do not allow the exclusion or limitation of incidental, consequential, or other damages, so the above limitations may not apply to you.

BELKIN®

EC Declaration of Conformity to R&TTE Directive 1999/5/EC CE0681

Manufacturer : BELKIN LTD,
EXPRESS BUSINESS PARK,
SHIPTON WAY
RUSHDEN
NN10 6GL ENGLAND

Representative : Belkin Ltd
(residing in the EC
holding the TCF)

Product / Apparatus : Mini Bluetooth USB Adapter

Type Number : F8T016

Variants include : All country variations

Declaration

I declare that above product conforms to all the applicable requirements of EU Directive 1999/5/EC and is CE-marked accordingly:

Article 3.1a: (Standard(s)) used to show compliance with LVD, 73/23/EEC:

EN60950-1:2006

Article 3.1b: (Standard(s)) used to show compliance with EMC Directive, 89/336/EEC:

EN301 489-17 V1.2.1 (2002-08) EN301 489-1 V1.6.1 (2004)

Article 3.2: Standard(s) used to show compliance:

EN300 328 V1.7.1 (2001)

Conformity was assessed via Annex IV, using a Technical Construction
File examined by Notified Body **0681 BZT-ETS**.

Signature :



Name :

K Simpson

Title :

European Regulatory Compliance Manager

Date :

16 MAY 2008