

## Safety And Regulatory Information

### Safety & Regulatory Information

The following sections contain notices for various countries:

#### Caution

This product is intended for use with FCC/CE certified computer equipment. Please check the equipment operating/installation manual and/or with the equipment manufacturer to verify/confirm if your equipment is suitable prior to the installation or use of the product.

#### Notice for USA

FCC Part 15: This equipment has been tested and found to comply with the limits for a Class B digital device, pursuant to Part 15 of the FCC Rules. These limits are designed to provide reasonable protection against harmful interference in a residential installation. This equipment generates, uses and can radiate radio frequency energy and, if not installed and used in accordance with the instructions, may cause harmful interference to radio communications. However, there is no guarantee that interference will not occur in a particular installation. If this equipment does cause harmful interference to radio or television reception, which can be determined by turning the equipment off and on, the user is encouraged to try to correct the interference by one or more of the following measures:

- Reorient or relocate the receiving antenna.
- Increase the separation between the equipment and receiver.
- Connect the equipment into an outlet on a circuit different from that to which the receiver is connected.
- Consult the dealer or an experienced radio/TV technician for help.

This device complies with part 15 of the FCC Rules. Operation is subject to the following two conditions:

1. This device may not cause harmful interference, and
2. This device must accept any interference received, including interference that may cause undesired operation.

#### Caution

To comply with the limits of the Class B digital device, pursuant to Part 15 of the FCC Rules, this device must be installed with computer equipment certified to comply with Class B limits. All cables used to connect to the computer and peripherals must be shielded and grounded. Operation with non-certified computers or non-shielded cables may result in interference to radio or television reception.

#### Modification

Any changes or modifications not expressly approved by the grantee of this device could void the user's authority to operate the device.

#### Notice for Canada

This Class B digital apparatus complies with Canadian ICES-003. Cet appareil numérique de la classe B est conforme à la norme NMB-003 du Canada.

#### Canadian Class B Statement

This digital device does not exceed the Class B limits for radio noise emissions from digital apparatus as set out in the interference-causing equipment standard entitled "Digital Apparatus," ICES-003 of the Department of Communications.

Cet appareil numérique respecte les limites de bruits radioélectriques applicables aux appareils numériques de Classe B prescrites dans la norme sur le matériel brouilleur: "Appareils Numériques," NMB-003 édictée par le ministre des Communications.

#### MODIFICATION:

Any changes or modifications not expressly approved by the grantee of this device could void the user's authority to operate the device.

Toute modification non approuvée explicitement par le fournisseur de licence de l'appareil peut entraîner l'annulation du droit de l'utilisateur à utiliser l'appareil.

#### State of California Proposition 65:

**WARNING:** Handling this product may expose you to chemicals known to the State of California to cause cancer and birth defects or other reproductive harm.

**Wash hands after handling.**

#### Explanatory Note

California Safe Drinking Water and Toxic Enforcement Act of 1986 (Proposition 65) requires special product labeling for products containing certain chemicals known to the State of California to cause cancer, birth defects or other reproductive harm. Creative has chosen to provide a warning based on its knowledge about the presence of one or more listed chemicals without attempting to evaluate the level of exposure. With Creative's products, the exposure may be below the Proposition 65 level of concern, or could even be zero. However, out of an abundance of caution, Creative has elected to place the Proposition 65 warning on its products.

## DECLARATION OF CONFORMITY

According to the FCC96 208 and ET95-19

Manufacturer/Importer's Name: Creative Labs, Inc.

Manufacturer/Importer's Address: 1901 McCarthy Boulevard  
Milpitas, CA. 95035  
Tel: (408)428-6600

declares under its sole responsibility that the product

Trade Name: Creative Labs

Model Numbers: MF0365

has been tested according to the FCC / CISPR22/97 requirement for Class B devices and found compliant with the following standards:

EM/EMC: ANSI C63.4 2003, FCC Part 15 Subpart B  
Complies with Canadian ICES-003 Class B

This device complies with part 15 of the FCC Rules.

Operation is subject to the following two conditions:

- (1) This device may not cause harmful interference, and
- (2) this device must accept any interference received, including interference that may cause undesirable operation.

Ce matériel est conforme à la section 15 des règles FCC.

Son Fonctionnement est soumis aux deux conditions suivantes :

- (1) Le matériel ne peut être source d'interférences et
- (2) Doit accepter toutes les interférences reçues, y compris celles pouvant provoquer un fonctionnement indésirable.

Supplementary Information:

Compliance Manager  
Creative Labs, Inc.  
August 22, 2008

# CREATIVE



- EN** Quick Start Guide
- FR** Démarrage Rapide
- ES** Guía Rápida
- BP** Introdução rápida
- TR** Kullanım
- CT** 快速入門指南
- JP** クイックスタートガイド
- CS** 快速开始指南

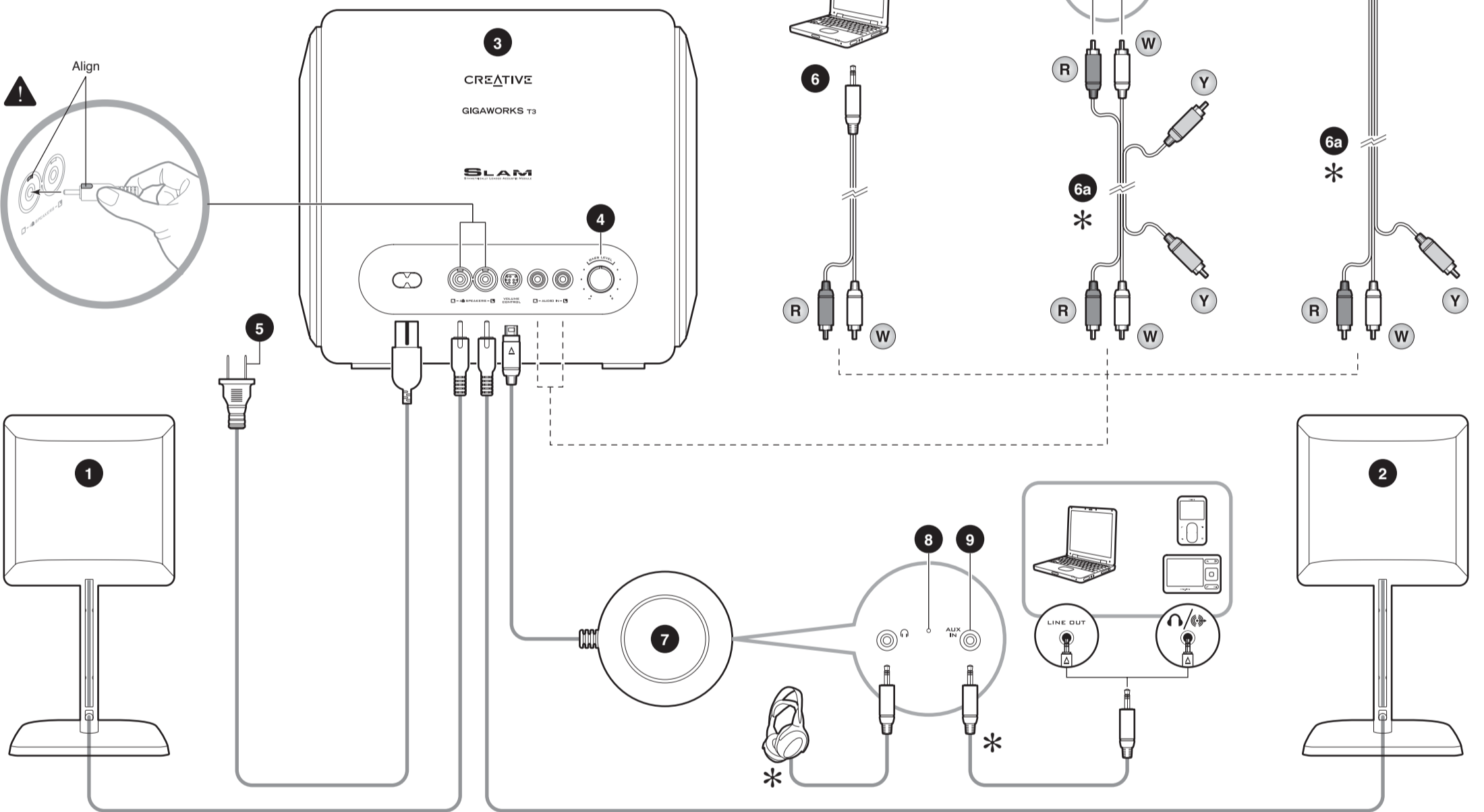
# GIGAWORKS®

## T3

PIN 03MF03650001 Rev. A

### Connectivity Diagram • Schéma de connexion • Diagramm zur conectividad • Diagramm zur conectividade • Balant diyagram • 連接示意圖 • 接続図 • 连接示意图

EN	FR	ES	BP	TU	CT	JP	CS
<b>R</b> Red	<b>Rouge</b>	<b>Rojo</b>	<b>Vermelho</b>	<b>Kırmızı</b>	<b>紅色</b>	<b>赤</b>	<b>红色</b>
<b>W</b> White	<b>Blanc</b>	<b>Blanco</b>	<b>Branco</b>	<b>Beyaz</b>	<b>白色</b>	<b>白</b>	<b>白色</b>
<b>Y</b> Yellow	<b>Jaune</b>	<b>Amarillo</b>	<b>Amarelo</b>	<b>Sarı</b>	<b>黃色</b>	<b>黄色</b>	<b>黄色</b>



\* • Optional (sold separately) • Facultatif (vendu séparément) • Opcional (se vende por separado) • Opcional (vendido separadamente) • İsteğe bağlı (ayrı olarak satılır) • 選購配件 (另行購買) • オプション (別売) • 選購件 (另行购买)

EN	FR	ES	BP	TR	CT	JP	CS
<b>1</b> Right Satellite Speaker	Haut-parleur satellite droit	Altavoz satélite derecho	Alto-falante direito	Sağ Hoparlör	右環繞喇叭	サテライトスピーカー(右)	右卫星音箱
<b>2</b> Left Satellite Speaker	Haut-parleur satellite gauche	Altavoz satélite izquierdo	Alto-falante esquerdo	Sol Hoparlör	左環繞喇叭	サテライトスピーカー(左)	左卫星音箱
<b>3</b> SLAM Subwoofer	Caisson des basses SLAM	Altavoz de tonos bajos SLAM	Subwoofer SLAM	SLAM Subwoofer	SLAM 低音喇叭	SLAM サブウーファー	SLAM 低音炮
<b>4</b> Bass Level Control	Bouton de réglage des basses	Control de nivel de graves	Controle do nível de graves	Bas seviye kontrolü	低音級數控制	バスレベルコントロール	低音音量控制
<b>5</b> To Wall Outlet (Disconnect when not in use for several days)	Vers la prise murale (Déconnectez le système si vous n'avez pas l'intention de l'utiliser pendant plusieurs jours)	A la toma de corriente (desconéctelo cuando no se vaya a utilizar durante varios días)	Adaptador de Fonte de Alimentação (Os tipos de adaptador podem variar em diferentes países)	Güç kaynağı adaptörü (Adaptör tipinin ülkelerin göre farklılık göstermesi mümkündür)	變壓器 (不同國家，變壓器類型可能不同)	電源コード (長期間使用しない場合は電源コードを取り外して下さい。また指定以外の電源には接続しないで下さい。)	连接至电源插座 (长期不用时请拔下)
<b>6</b> To Analog Audio Source	Vers la source audio analogique	Fuente de sonido analógica	Fonte de áudio analógico	Analog Ses Kaynaklarına	至類比音源	オーディオ(アナログ)出力へ接続	接至模拟音源
<b>6a</b> Optional: Audio / Video Cable is normally provided with TV,DVD or game console.	Facultatif: Le câble audio / vidéo est généralement fourni avec un poste de télévision, un lecteur DVD ou une console de jeux.	Opcional: El cable de sonido y vídeo normalmente se proporcionan junto con el equipo de TV, DVD o consola de juegos.	Opcional: O cabo de Audio / Vídeo é normalmente fornecido com a TV, DVD ou com o console de jogos.	isteğe bağlı: Ses / Görüntü kablosu genellikle TV, DVD ya da oyun konsolu ile birlikte sağlanır.	可選: 音源 / 視頻線一般隨TV, DVD或遊戲控制台一同提供。	オプション(別売): AVケーブルはテレビやビデオ、DVDプレーヤー、ゲーム機器などに付属しており、この製品には付属していません。	可選: 音源 / 視頻線通常隨TV, DVD或遊戲平台一同提供。
<b>7</b> Volume Control Pod Increase Volume - rotate knob clockwise. Decrease Volume - rotate knob anti-clockwise.	Commande de volume Augmenter le volume - faire tourner le bouton de gauche à droite. Baisser le volume - faire tourner le bouton de droite à gauche.	Panel de control de volumen Incrementar volumen: girar el botón en la dirección de las agujas del reloj. Disminuir volumen: girar el botón en dirección contraria a las agujas del reloj.	Botão de controle de volume Aumentar volume - gire o botão no sentido horário. Diminuir volume - gire o botão no sentido anti-horário.	Ses Düzeyi Kontrol Böliümü Ses Düzeyini Artırma - düğmeyi saat yönünde döndürün. Ses Düzeyini Azaltma - düğmeyi saatini tersi yönünde döndürün.	音量線控 增大音量 - 順時針旋轉旋鈕。 降低音量 - 逆時針旋轉旋鈕。	ボリュームコントロールポッド ボリュームアップ - ボリュームを最小にして低待機電力モードとなって電源が切れ、電源LEDも消灯します。 通常使用時の電源オン/オフはボリュームコントロールノブで行います。 (この場合電源コードは本体に接続したままにします)	音量控制 順時針旋轉 增大音量。 逆時針旋轉 减小音量。
<b>8</b> Power LED • When volume is set to minimum power LED turns off and speaker goes into Low Standby Power consumption mode. Eliminates the need of a on/off switch. (The system is always connected to the mains)	Témoin d'alimentation • Lorsque le volume est sur le paramètre minimum, le témoin d'alimentation s'éteint et le haut-parleur passe en mode de consommation "Low Standby Power". Ne nécessite plus de bouton d'alimentation on/off. (Le système reste connecté en permanence aux haut-parleurs principaux)	LED de alimentación • Cuando el volumen se establece en el mínimo, el LED de alimentación LED se apaga y el altavoz se pone en el modo de consumo de energía "Low Standby Power". Elimina la necesidad de un botón de encendido/apagado de la alimentación. (El sistema siempre está conectado a la red eléctrica)	LED de alimentação • Quando o volume está no nível mínimo, o LED de alimentação se apaga e o alto-falante entra no modo de consumo de energia "Low Standby Power". Elimina a necessidade de um botão liga/desliga. (O sistema fica conectado constantemente à rede elétrica)	Güç LED'i • Ses düzeyi en aza ayarlandığında, güç LED'i söner ve hoparlör "Low Standby Power" güç tüketim moduna geçer. Açma/kapama düğmesine olan gereksinimi ortadan kaldırır. (Sistem her zaman prize takılıdır)	電源 LED • 當音量調至最小時，電源 LED 熄滅，喇叭進入 "Low Standby Power" 功能模式。 (總是將系統連接至電源)	電源 LED • ボリュームを最小にすると低待機電力モードとなって電源が切れ、電源LEDも消灯します。 通常使用時の電源オン/オフはボリュームコントロールノブで行います。 (この場合電源コードは本体に接続したままにします)	電源 LED 指示灯 • 当音量调节到最小时，电源指示灯关闭，此时音箱进入 "Low Standby Power" 能耗技术 (该技术正在申请专利) • 将音量调至最小时，音箱的功耗降到最低，不再需要传统的开关。 (系统总是与电源相连)
<b>9</b> Auxiliary Line-in For Audio Devices	Vers la source audio analogique	Fuente de sonido análoga	Entrada de línea auxiliar Para dispositivos de audio	Yardımcı Line-in Ses Aygıtı için	輔助裝置 Line-in 用於音效裝置	AUX入力 オートオーディオ機器のアナログ出力と接続。	辅助线性输入接口 用于各种音频设备
<b>Note:</b> Low Standby Power consumption technology (patent pending) • Minimizes the main power to the speaker system when volume set to minimum.	<b>Remarque :</b> Technologie "Low Standby Power" de consommation d'électricité (brevet en attente) • Limite l'utilisation de l'alimentation au système de haut-parleurs lorsque le volume est sur le paramètre minimum.	<b>Nota:</b> Tecnología de consumo de energía "Low Standby Power" (patente en trámite) • Minimiza el consumo de energía cuando el volumen se establece en el nivel mínimo.	<b>Nota:</b> Tecnologia de consumo de energia "Low Standby Power" (patente pendente) • Minimiza o consumo de energia do sistema de alto-falante quando o volume está no nível mínimo.	<b>Not:</b> "Low Standby Power" güç tüketim teknolojisi (patent beklemekte). • Ses düzeyi en az ayara getirildiğinde hoparlör sistemine olan ana gücü en aza indirir .	<b>注意:</b> "Low Standby Power" 功耗技術 (專利申請中) • 將音量調至最小時，即可把喇叭系統的主功率降至最低。	<b>メモ:</b> 低待機電力テクノロジー • ボリュームを最小の状態にするとスピーカーのメインパワーを最小化して低消費電力の待機状態に移行します。	<b>提示:</b> "Low Standby Power" 能耗技术 (该技术正在申请专利) • 将音量调节到最小时，即可把音箱的功耗降到最低。