

# KETTLER

## Montageanleitung und Handhabungshinweise Fahrrad-Kindersitz „FLIPPER“

Art.-Nr. 8947-500



Der Umwelt zuliebe: wir drucken auf 100% Altpapier!

- D
- GB
- F
- NL



FREIZEIT MARKE KETTLER

## Ersatzteilbestellung Seite 18-19

Geben Sie bei Ersatzteilbestellungen bitte die vollständige Artikelnummer, die Ersatzteilnummer, die benötigte Stückzahl sowie die auf der Rückseite aufgestempelte Kontrollnummer an.

Die Bestellung kann nur über einen autorisierten Fachhändler erfolgen.

Bestellbeispiel: Art.-Nr. 8947-500/Ersatzteil-Nr. 42108002/2 Stück/Kontroll-Nr: ..... Bewahren Sie die Originalverpackung des Gerätes gut auf, damit sie später u. U. als Transportverpackung verwendet werden kann.

Wichtig: Zu verschraubende Ersatzteile werden grundsätzlich ohne Verschraubungsmaterial berechnet und geliefert. Falls Bedarf an entsprechendem Verschraubungsmaterial besteht, ist dieses durch den Zusatz „mit Verschraubungsmaterial“ bei der Ersatzteilbestellung anzugeben.

Heinz Kettler GmbH & Co. KG · Postfach 1020 · D- 59463 Ense-Parsit

Österreich: KETTLER Hotline 0660/7373

<http://www.kettler.net>

### **GB** Assembly Instructions

**Please read these instructions carefully before the assembly and first use. You will get important information on your safety as well as the use and maintenance of the child's seat. Retain these instructions for information and for maintenance works as well as orders for spare parts.**

KETTLER's child's seat was designed in compliance with applicable safety regulations and manufactured under permanent quality control. The knowledge gained in this process is used to constantly improve and develop our products. In order to offer our customers the very best in quality, we reserve the right to make technical changes at any time. Should you have the need of assistance, please contact your dealer.

### For Your Safety

- Only use this bicycle child's seat for its intended purpose, i.e. only mount it above the bike's rear axle by means of the included mounting parts and only use it for the transport of children.
- The child's seat can be used for bicycles whose minimum diameter of the wheels is 26 inch; the diameter of the frame tube must be 28, 30, 32, 35 or 40 mm.
- Any other exploitation is inadmissible and may even be dangerous. The manufacturer cannot be held liable for damage caused by unauthorized use.
- The bicycle used must be safe and correspond with the Road Traffic Licensing Regulations (StVZO). According to § 21 of Road Traffic Regulations (StVO) and/or §§ 4 and 7 of StVO only children under the age of 7 years may be carried by persons who are at least 16 years old. The seat may be loaded with max. 22 kg (weight of child plus additional luggage). Moreover, children who cannot sit alone (up to about 9 months) should not be carried.
- If you have a special bicycle structure please ask your dealer as to whether your bike is suitable for the use of a child's seat.
- The bicycle must be suited for accepting such additional loads. Furthermore, the admissible total weight of the bicycle including child and child's seat must not be exceeded. If necessary, ask your bicycle manufacturer or supplier for the bicycle's carrying capacity.
- Do not attach additional luggage to the child's seat. If necessary, use a luggage carrier for the front axle in order to obtain a load balance. Please, note that the carrying capacity of bicycle and child's seat are not exceeded.
- If you transport your bicycle on a luggage rail on your car, by all means dismount the child's seat from your bicycle since with growing velocities the air resistance increases which may lead to a higher fuel consumption and to exceeding the carrying capacity of the luggage rail.
- The child's seat for bicycles meets all safety regulations. Repair works done by non-experts and alterations to the construction (dismounting original parts, attachment of parts without approval) may cause harm to the user.
- Damaged components may jeopardize your or the child's safety. Therefore, before beginning a ride, you should check all components for potential damage and loose connections (screws, connections, safety belts etc.).
- Damaged or worn components have to be replaced immediately. Exclusively use original KETTLER spare parts.
- When attaching the seat to a bicycle that has a saddle stem with suspension please take into account the distance between the seat and the suspension spring. You should ensure that the child's fingers cannot reach the spring thus avoiding the **possibility of injury**.

## Assembly

- The child's seat must be positioned such that it is not in contact with the luggage carrier. The distance between luggage carrier and tube shackle must be min. 25 mm.
- Fix the tube shackle parallel to the ground. This results in a seat which is slightly inclined towards the rear such that the child may not slide out of the seat. The seat back is slightly inclined to the rear.
- The load centre (marked by a red point) may only be within 10 cm behind the wheel hub (explained in detail below).
- In case of saddles with uncovered springs the latter have to be covered as a protection against bruises (e. g. art. nr. 8947-690).
- Further to that the rear wheel is provided with an additional cover on the spokes or a protective device to prevent dresses from getting mingled with the spokes.

## Handling and security of riding

- Please observe that the riding behaviour of the bicycle changes when the child's seat is used (irrespective of child being present or not). Owing to the increased centre of gravity the bicycle's behaviour may unfavourably change and the bicycle's dirigibility may be impaired. For this reason, ride carefully – in particular with regard to braking and evading manoeuvres. Also avoid riding with one hand.
- Ask the child to sit quietly. Sudden weight transfers by the child may considerably affect your safety during a ride.
- Pay attention that the child does not handle any objects (e.g. toys) which might get mingled with the wheels. Clothes or extremities of the child should never get into turning parts or into the brake and transmission system.
- Protect your child from sharp edges at your bicycle, from worn cables and other parts that might lead to injuries.
- Before beginning a ride and during a tour check whether or not the child's seat is positioned firmly on the bicycle; also check screwings and other connections for proper seat.
- Only transport the child with the safety belt being fastened and the foot straps being closed. Have a check during the breaks that those safety devices are still unopened.
- Even if no child is carried, close the seat belt to avoid that it gets into turning parts or that it clings to parts that are passed during riding.
- Pay attention to a suitable and sufficiently warm clothing of your child. Children who are sitting still normally cool down faster than the rider.
- Do not park your bicycle before the child has left its seat.
- We recommend that adult and child wear suitable helmets.
- Adjust the headrest such that its upper edge matches the child's ear level.
- In cases of doubt and any other question do not hesitate to contact your specialized dealer.
- Never leave your child alone and unattended in its child's seat due to the danger of the bicycle falling over.
- If seat or cloth are damp it is possible that the colour of the seat could mark pale coloured cloths due to friction.

## Service and maintenance

- Always use environmentally friendly substances (never aggressive or etching ones) for the cleaning and service of the child's seat for bicycles.
- You can also clean safety belts, if required. In this case it is especially important not to use aggressive substances! Usually a weak rinsing lye or suds.

## Accessories

- If you want to attach the seat to another bicycle, you can order a second carrier for the child's seat. (item no. 8947-633).
- To secure the child's seat from theft, a cylinder lock can be inserted into the seat support bracket (see page 18). The lock (type K.01.32.G1) is not supplied with the seat. The lock is obtainable from: Firma P.C. Fischer, Kaiserstraße 126, D-58300 Wetter/Ruhr, tel. (0) 23 35/42 64, fax (0) 23 35/58 46

## Note on Assembly

Assembly must be carried out carefully by **an adult**.

Carefully read these mounting instructions before beginning with the work itself. The individual steps are additionally explained in the sequence of figures by means of symbols, in some cases a text mark indicates that a written explanation is available. Strictly follow the individual mounting steps to ensure a safe use and operation of the unit.

For technical reasons, we reserve the right to carry out preliminary assembly work (e.g. addition of tubing plugs).

## List of spare parts page 18-19

When ordering spare parts, always state the full article number, spare-part number, the quantity required and the inspection number stamped on the back.

The seat may only be ordered at an authorized dealer.

**Example order:** Art. no. 8947-500/spare-part no. 70122771/2 pieces/inspection no. .... Please keep original packaging of this article, so that it may be used for transport at a later date, if necessary. **Important:** spare part prices do not include fastening material; if fastening material (bolts, nuts, washers etc.) is required, this should be clearly stated on the order by adding the words „with fastening material“.

**KETTLER (GB) Ltd. · Merse Road · North Moons Moat · Redditch, Worcestershire B 98 9 HL · Great Britain**

**KETTLER International Inc. · P.O. Box 2747 · Virginia Beach, VA 23450 · USA**

<http://www.kettler.net>

## F Instructions de montage

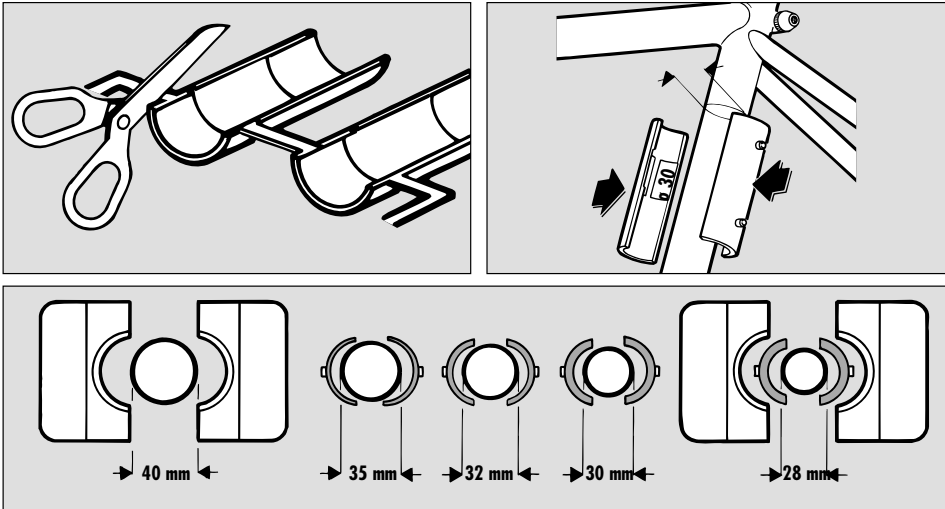
**Lire attentivement les présentes instructions avant le montage et avant la première utilisation. Elles contiennent des remarques importantes pour la sécurité ainsi que pour l'emploi et l'entretien de le fauteuil porte-enfant. On est prié de garder les présentes instructions pour avoir les renseignements dont on peut avoir besoin, pour effectuer l'entretien ou pour commander des pièces de rechange.**

Ce fauteuil porte-enfant de KETTLER a été construit en fonction de l'état actuel des prescriptions de sécurité. Sa construction fait l'objet d'un contrôle de qualité constant. Les connaissances acquises sont utilisées lors de notre travail de développement. Pour cette raison, nous nous réservons le droit de procéder à des modifications de la technique et de la stylistique, afin de pouvoir toujours proposer à nos clients des produits de qualité optimale. Si vous avez quand même des éclamations, veuillez vous mettre en rapport avec votre concessionnaire.

## Consignes importantes pour l'utilisation

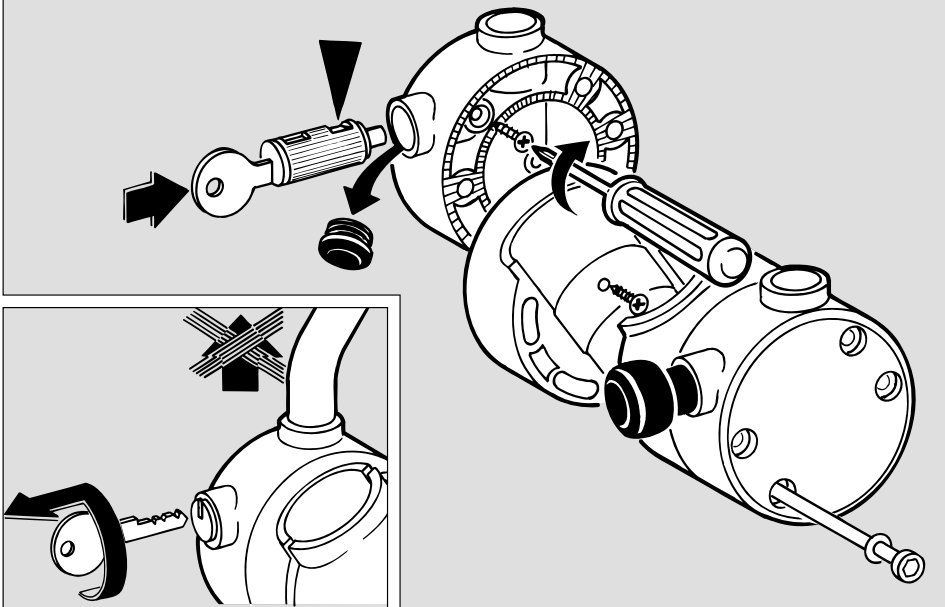
- Ce fauteuil porte-enfant pour bicyclette ne doit être utilisé que pour sa destination, c'est-à-dire pour le montage sur l'essieu arrière d'une bicyclette avec les pièces de montage y destinées pour le transport des enfants.
- Ce fauteuil porte-enfant est prévu pour bicyclettes aux roues d'un diamètre de 660,4 mm et au cadre en tube de 28, 30, 32, 35 ou 40 mm de diamètre.
- Tout autre emploi est interdit et peut être dangereux. Le constructeur ne pourra être rendu responsable de dommages causés par l'emploi abusif dudit fauteuil.
- La bicyclette utilisée doit répondre aux prescriptions de sécurité et au règlement d'immatriculation. Selon § 21 du code de la route, le fauteuil porte-enfant pour bicyclette ne doit être utilisé que pour le transport des enfants n'ayant pas encore 7 ans par des personnes âgées de 16 ans au moins. Le fauteuil ne doit pas être chargé d'un poids excédant 22 kg (poids de l'enfant plus bagage). De plus, il ne faut pas transporter des enfants n'étant pas encore à même de se tenir indépendamment (jusqu'à 9 mois environ).
- Dans le cas de constructions spéciales de bicyclettes, consultez le fabricant et assurez-vous que la bicyclette est propre à l'utilisation d'un fauteuil porte-enfant.
- La bicyclette doit être appropriée à une telle charge complémentaire. De plus, le poids de la bicyclette avec l'enfant et le fauteuil ne doit pas excéder le poids total autorisé. Le cas échéant, consultez le fabricant ou le fournisseur de la bicyclette en ce qui concerne la limite de charge de la bicyclette.
- N'attachez pas de bagage complémentaire au fauteuil. Le cas échéant, utilisez un porte-bagages sur l'essieu avant pour la répartition des charges. Faites attention à ne pas excéder la limite de charge de la bicyclette et du fauteuil.
- Si vous transportez la bicyclette avec un dispositif porte-bicyclette monté sur une voiture, il faut absolument démonter le fauteuil porte-enfant puisque la résistance de l'air – et par conséquent la consommation de carburant – augmente avec des vitesses élevées. De plus, la limite de charge du dispositif porte-bicyclette pourrait être

1

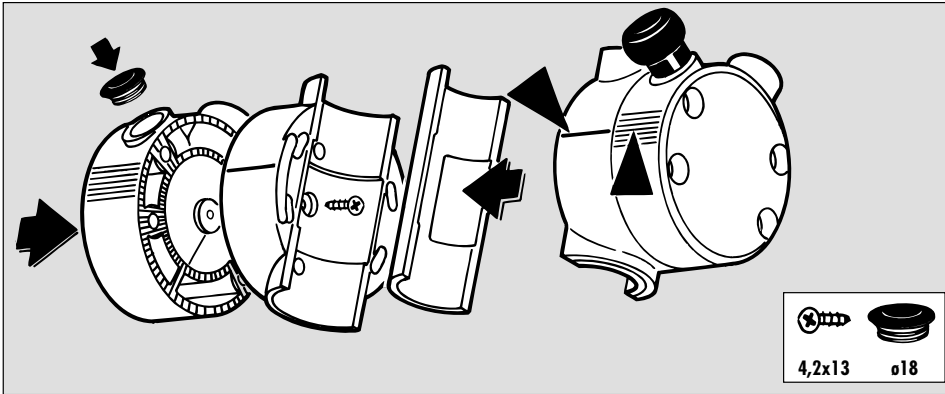


**2a** Zubehörmontage. Schloss gehört nicht zum Lieferumfang.

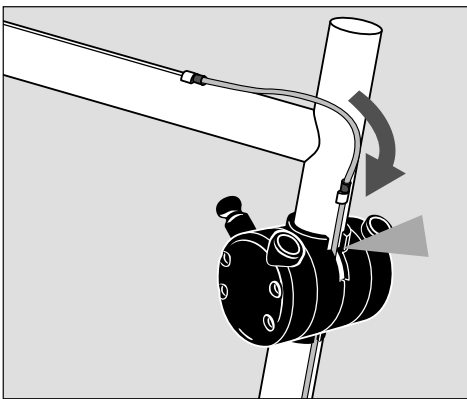
- (GB)** Accessory assembly. Lock not included.
- (F)** Montage des accessoires. La serrure ne fait pas partie du domaine de livraison.
- (NL)** Montage van de accessoires. Slot is niet in de levering ingesloten.



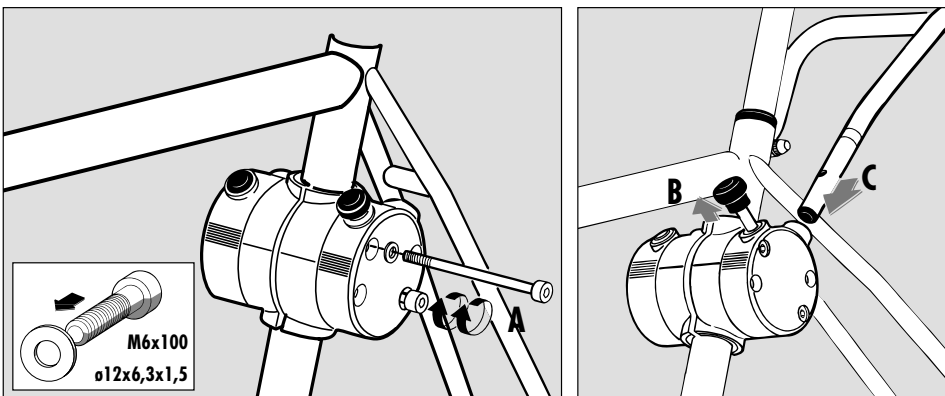
2b



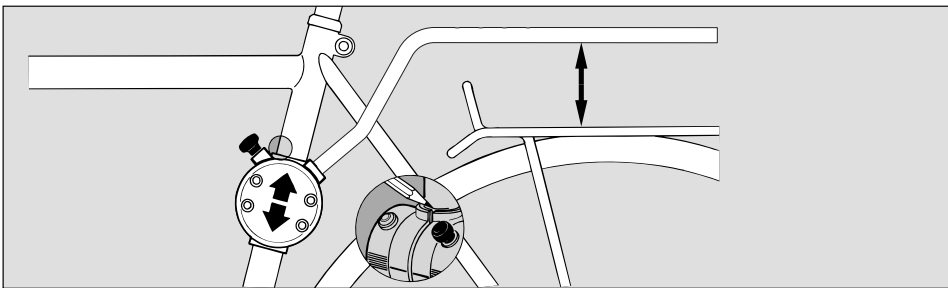
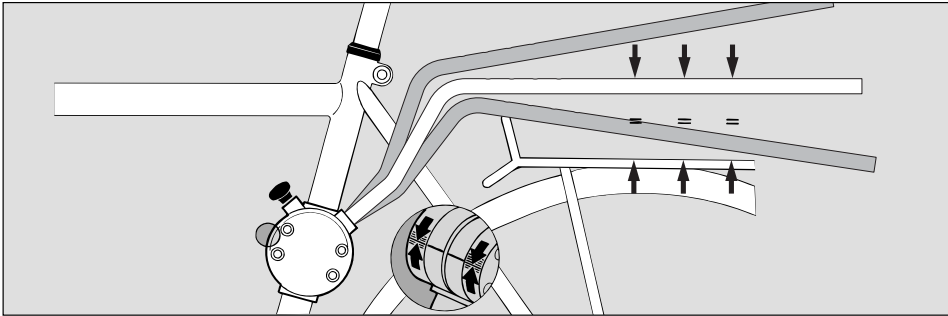
3



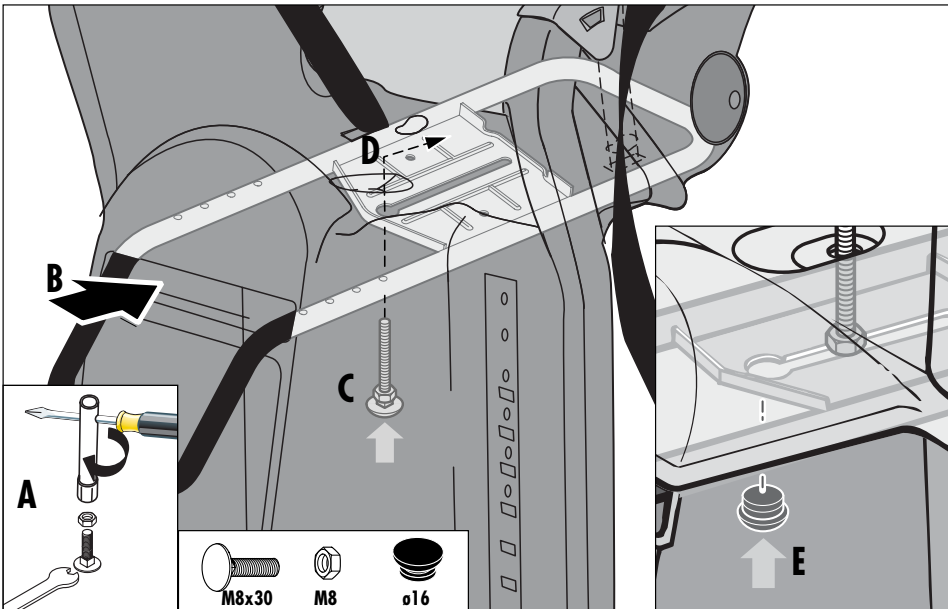
4



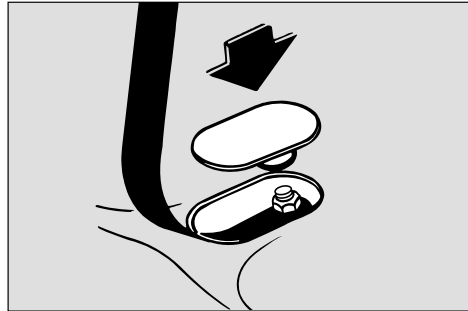
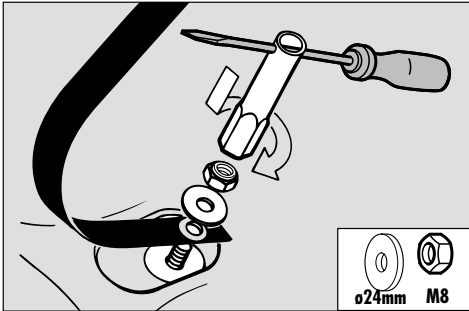
5



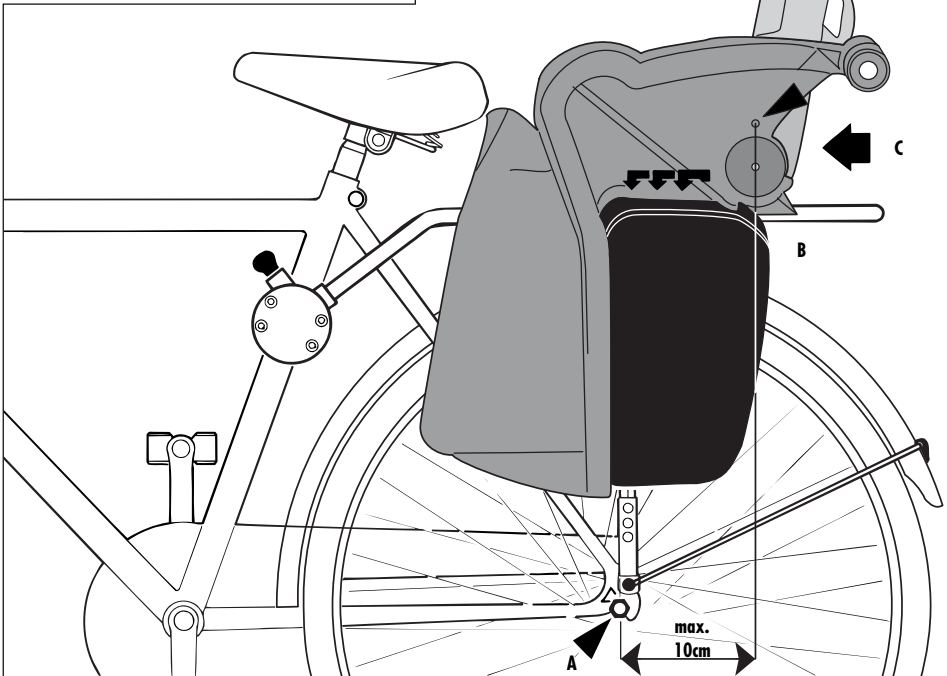
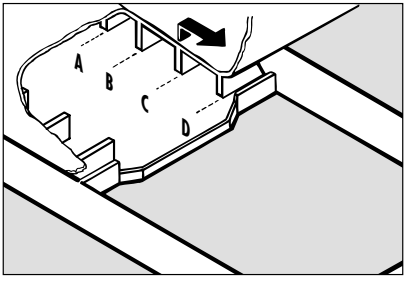
6a



6b

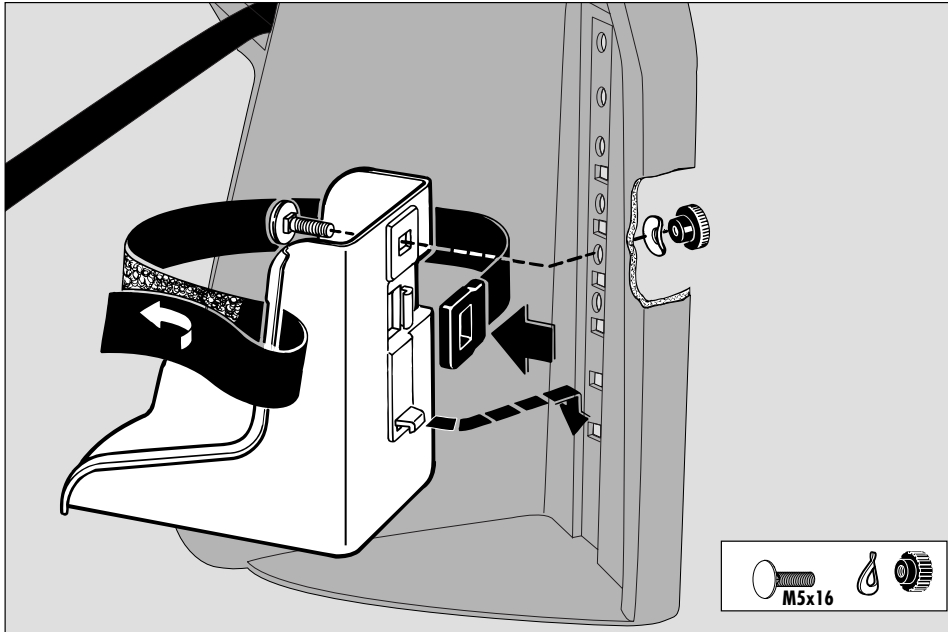


7

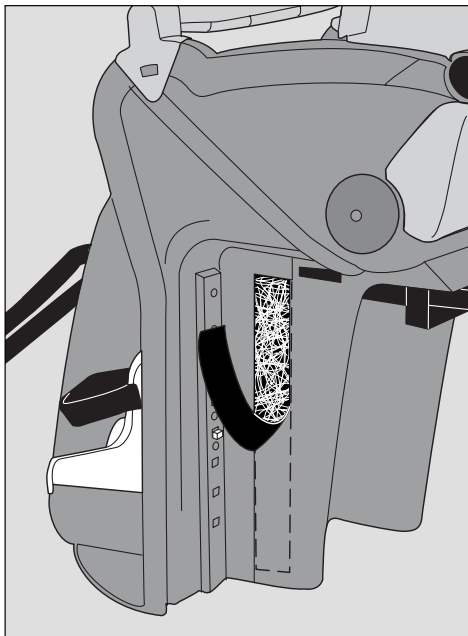




8



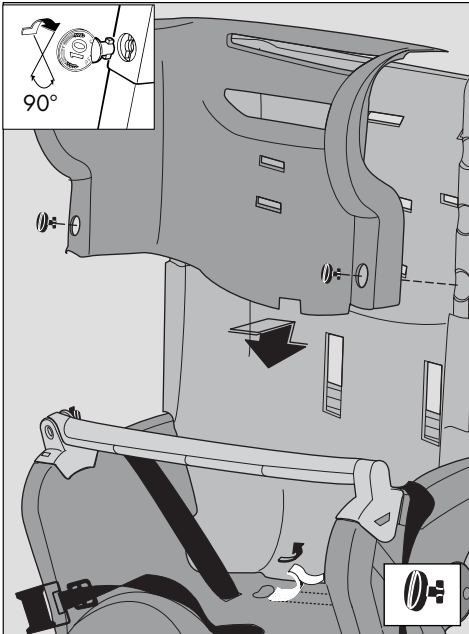
9



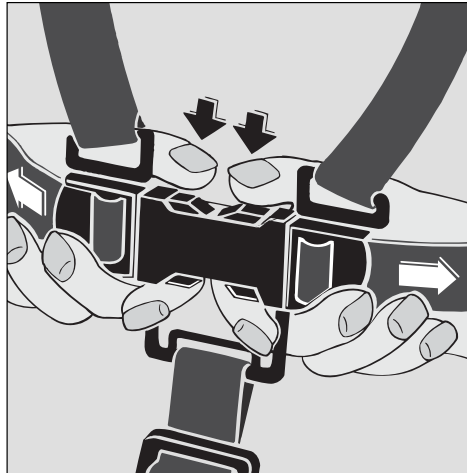
10 Rechte und linke Tasche sind unterschiedlich



## 11 Handhabungshinweise



## 12

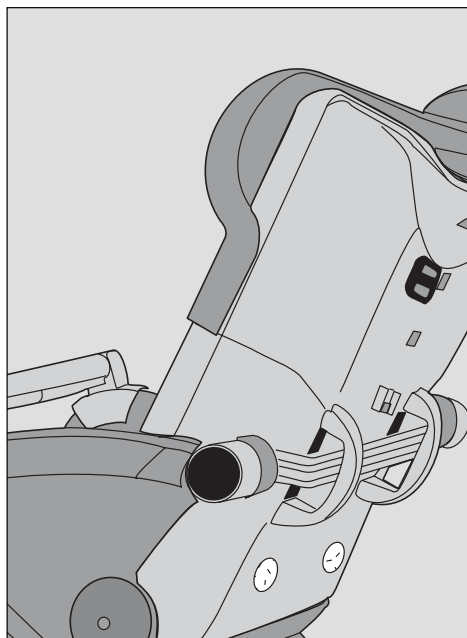
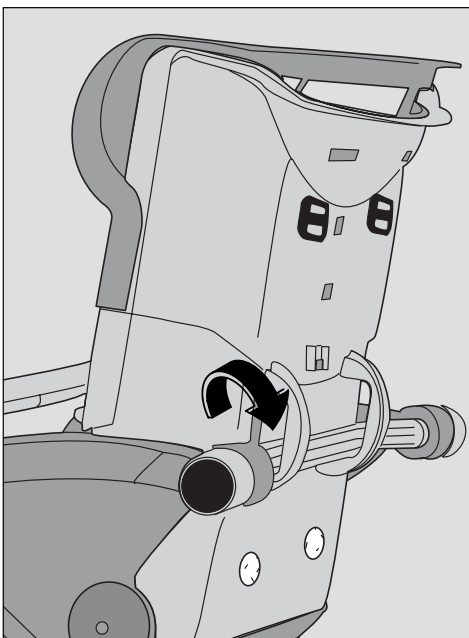


**GB** Handling

**F** Indications relatives à la manipulation

**NL** Bedieningsinstructies

## 13



## Ersatzteilliste

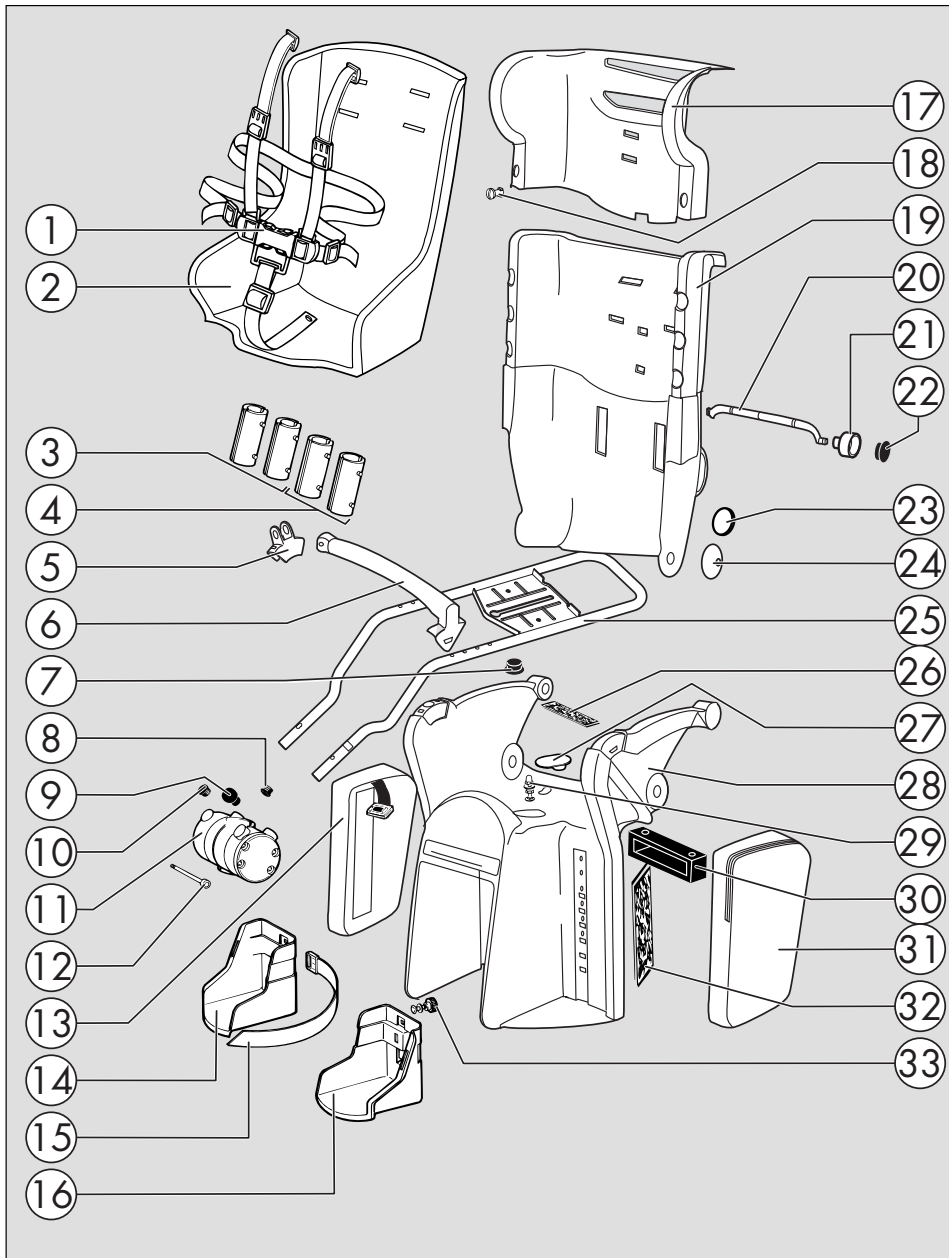
| Kindersitz FLIPPER |  | 8947-500 |               |
|--------------------|--|----------|---------------|
| Teil-Nr.           | Bezeichnung                            | Stück    | Bestellnummer |
| 1                  | Gurtsystem (kpl.)                      | 1        | 91960067      |
| 2                  | Kindersitz (Polster)                   | 1        | 58947500      |
| 3                  | Ausgleichsbuchsensatz für ø28 und 30mm | 1        | 70122675      |
| 4                  | Ausgleichsbuchsensatz für ø32 und 35mm | 1        | 70122677      |
| 5                  | Gelenkstück                            | 1        | 70122832      |
| 6                  | Handbügel                              | 1        | 70122833      |
| 7                  | Stopfen                                | 1        | 10100094      |
| 8                  | Stopfen für ø16mm                      | 2        | 10100000      |
| 9                  | Zugknopf                               | 1        | 10124001      |
| 10                 | Stopfen für ø18mm                      | 1        | 10100103      |
| 11                 | Kindersitzhalterung (kpl.)             | 1        | 98580510      |
| 12                 | Verbindungsschraube M6x100             | 4        | 91960068      |
| 13                 | Seitentasche (rechts)                  | 1        | 67060003      |
| 14                 | Fußstütze (rechts)                     | 1        | 70122782      |
| 15                 | Klettverschlußband                     | 2        | 42108002      |
| 16                 | Fußstütze (links)                      | 1        | 70122783      |
| 17                 | Kopfstütze                             | 1        | 70122826      |
| 18                 | Verbindungsbolzen                      | 2        | 70122792      |
| 19                 | Rückenteil                             | 1        | 70122825      |
| 20                 | Verstellhebel                          | 1        | 70122827      |
| 21                 | Handrad                                | 2        | 70122828      |
| 22                 | Stopfen für ø35mm                      | 2        | 10100156      |
| 23                 | Reflektor                              | 2        | 33901127      |
| 24                 | Gelenkkappe                            | 2        | 70122829      |
| 25                 | Rohrbügel mit Stopfen für ø16mm        | 1        | 91960097-40   |
| 26                 | Klettband 20x100mm                     | 1        | 96600202      |
| 27                 | Schraubenabdeckung                     | 1        | 70122480      |
| 28                 | Sitz                                   | 1        | 70122824      |
| 29                 | Verbindungseinheit für Sitzkörper      | 1        | 98585031      |
| 30                 | Rohrbügelführung                       | 1        | 70122831      |
| 31                 | Seitentasche (links)                   | 1        | 67060004      |
| 32                 | Klettband 50x230mm                     | 2        | 96600201      |
| 33                 | Rändelmutter M5 mit Federscheibe       | 2        | 10104000      |
| 34                 | Schraubenbeutel                        | 1        | 98580700      |

## Ersatzteilzeichnung

**GB** Spare parts drawing and list

**NL** Reserveonderdeeltekening en -lijst

**F** Dessin et liste des pièces de rechange





## FREIZEIT MARKE KETTLER



- D** Bei Reklamationen bitte diese Kontrollnummer angeben.
- GB** In case of complaint, please state this control number.
- F** En cas de réclamation, prière de mentionner ce numéro de contrôle.
- NL** Bij reclamaties dit controlenummer vermelden.

docu 602c/09.02