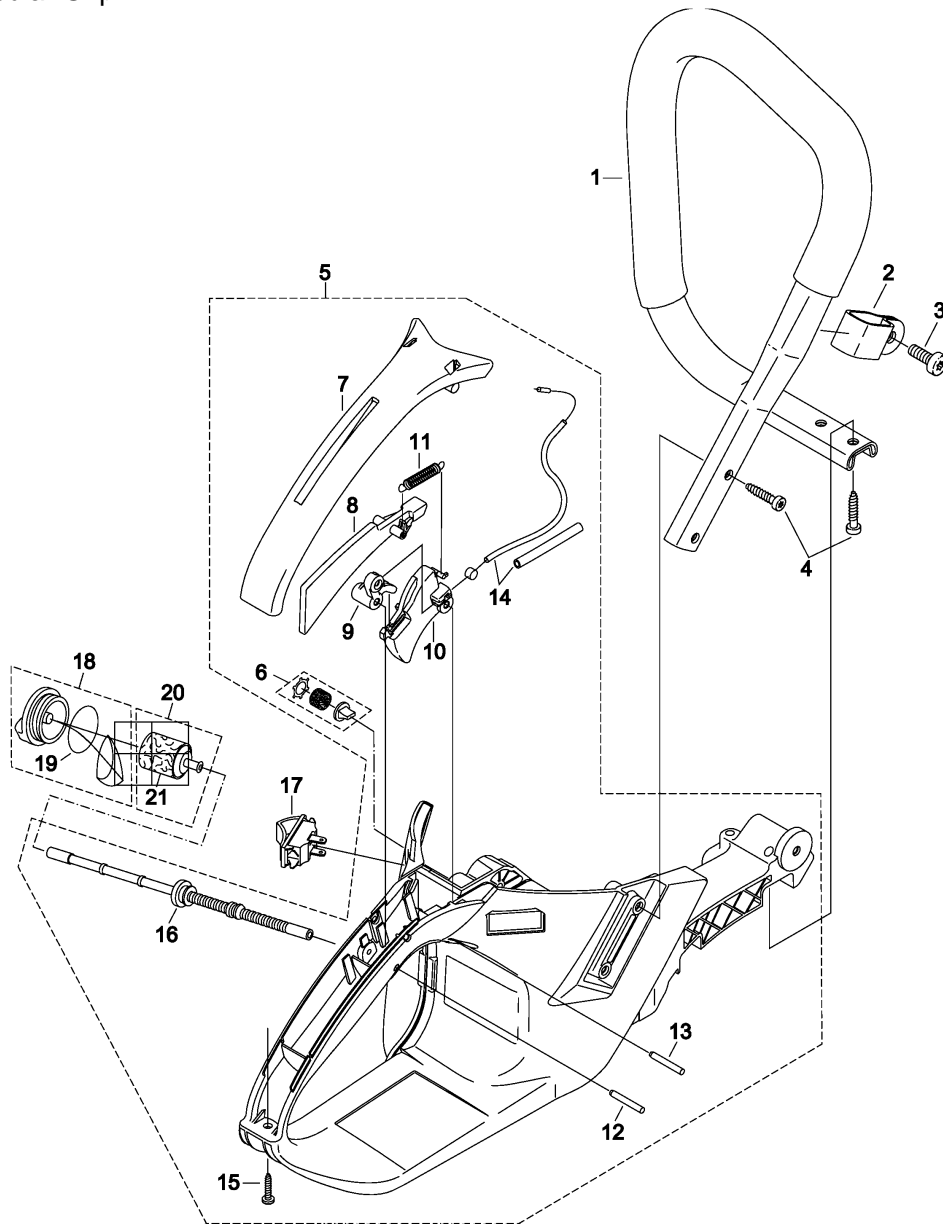
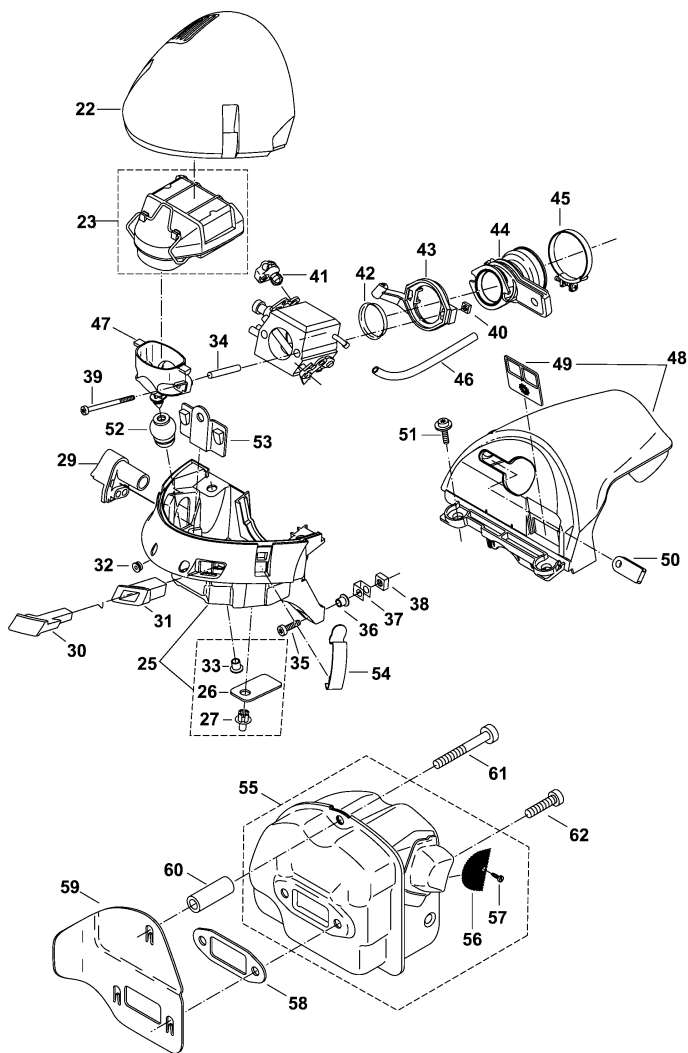


Fuel Tank, Tubular Grip



Item No.	Part No.	No. Used	Description	Item No.	Part No.	No. Used	Description
1	038 310 020	1	Tubular Handle Assy	12	935 930 240	1	Cylindrical Pin 3X24
2	038 310 061	1	Clamp(Old 038 310 060)	13	935 930 280	1	Cylindrical Pin 3X28
3	908 006 145	1	Screw 6X14	14	010 117 040	1	Bowden Cable
4	913 455 204	4	Screw 5,5X20	15	913 340 204	1	Screw 4X20 S27
5	<b>038 114 603</b>	1	Tank CPL. Blue (Old 038 114 601)	16	038 114 051	1	Fuel Line(Old 038 114 050)
6	957 114 060	1	Air Valve CPL	17	<b>975 001 240</b>	1	Short-Circuit Switch ( Old 975 001 210)
7	038 114 630	1	Grip Plate, Red Blue	18	010 114 050	1	Tank Cap CPL
8	038 117 020	1	Catch Lever	19	963 228 030	1	O Ring 28X3
9	038 117 030	1	Rocker	20	963 601 130	1	Suction Head
10	038 117 010	1	Throttle Lever	21	963 601 240	1	Felt for Suction Head
11	038 117 050	1	Spring	22	038 118 620	1	Cover, Grey

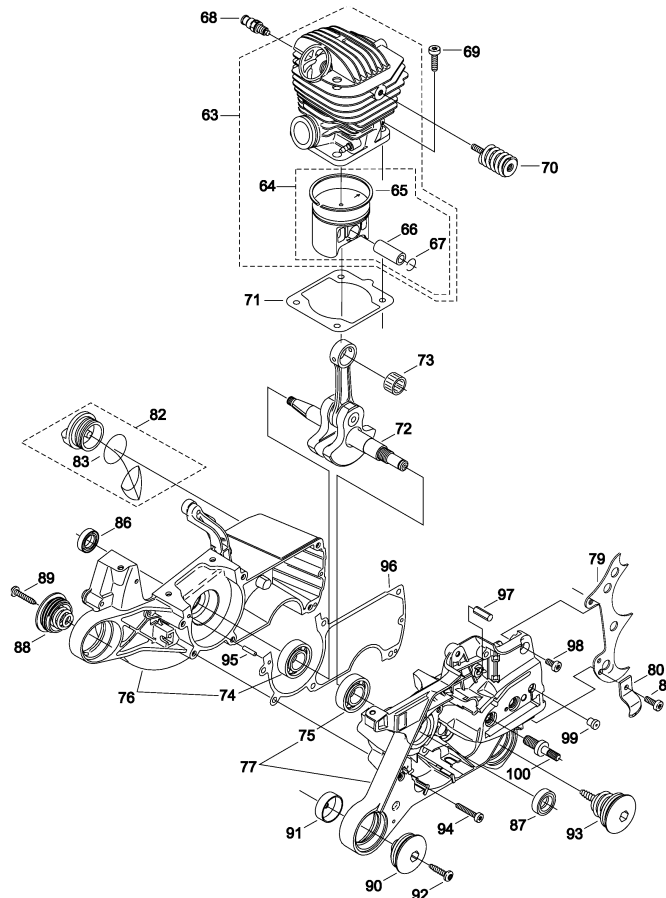
# Hood, Air Filter, Muffler



Item No.	Part No.	No. Used	Description	Item No.	Part No.	No. Used	Description
23	<b>038 173 101</b>	1	Air Filter CPL, Wool (Old 038 173 100)	41	038 155 010	1	Retaining Clip
	<b>038 173 011</b>	1	Air Filter, Nylon (Old 038 173 010)	42	038 131 030	1	Insert for Suction Hose
23a	038 173 200	1	Pre-Filter (Option)	43	038 171 041	1	Flange
23b	038 173 080	1	Air Filter, Nylon (Mesh size: 0.05m/m)	44	<b>038 131 011</b>	1	Suction Hose
				45	965 603 050	1	Hose Clamp
25	038 118 630	1	Bottom, Blue	46	965 452 380	1	Tube L=65 (Sold by Meter)
26	038 118 110	2	Rubber Flap	47	<b>038 171 011</b>	1	Connecting Muff (Old 038 171 010)
27	938 650 062	2	Rivet	48	038 118 690	1	Hood CPL, Grey
29	038 118 120	1	Adjusting Guide	49	038 118 140	1	Insert
30	038 155 050	1	Choke Shaft	50	038 118 130	1	Cable Guide
31	038 155 020	1	Choke Guide	51	917 105 205	2	Screw M5X20
32	965 401 020	1	Rubber Bush	52	038 171 030	1	Holder
33	001 118 100	2	Bushing	53	038 118 100	1	Plug
34	038 155 060	2	Spacer L=30mm	54	038 118 071	2	Steel Clip
35	908 005 205	2	Screw 5X20	55	038 174 200	1	Muffler
36	001 118 100	2	Bushing	56	038 174 040	1	Spark Arrester Screen CPL
37	038 111 050	2	Clip	57	915 035 100	1	Screw 3,5X10
38	038 111 060	2	Square Nut M5	58	965 531 130	1	Gasket
39	908 204 555	2	Screw 4X55	59	038 174 020	1	Cover Plate
40	921 804 004	2	Square Nut M4	60	038 174 030	1	Connecting Link
				61	908 305 405	1	Screw M5X40
				62	908 405 205	2	Screw 5X20

2 Model DCS6401  
 2 Model DCS7301  
 2 Model DCS7901

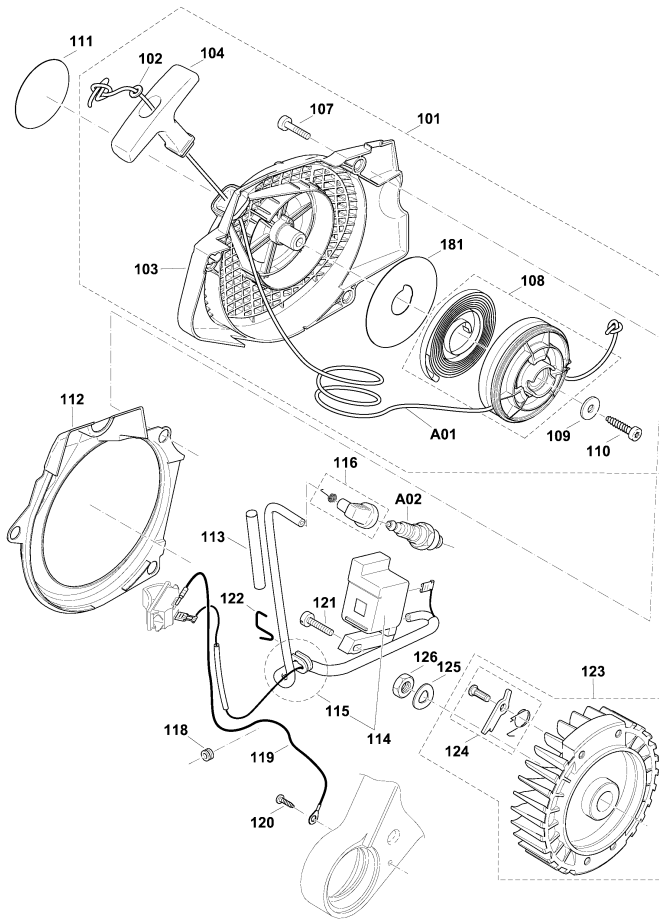
# Cylinder, Crankcase



Item No.	Part No.	No. Used	Description	Item No.	Part No.	No. Used	Description
63	040 130 031	1	Cylinder/Piston CPL D=47 DECO (DCS6401)(Old 040 130 030)	72	038 120 020	1	Crankshaft CPL
	039 130 030	1	Cylinder/Piston CPL D=50 DECO (DCS7301)	73	962 210 019	1	Needle Cage
	038 130 030	1	Cylinder/Piston CPL D=52 DECO (DCS7901)	74	960 102 159	1	Ball Bearing 6202
64	325 132 032	1	Piston CPL D=47 (DCS6401) (Old 325 132 031)	75	960 102 179	1	Ball Bearing 6203 C4
	394 132 111	1	Piston CPL D=50 (DCS7301)	76	038 111 630	1	Crankcase Magneto Side, Blue
	038 132 000	1	Piston CPL D=52 (DCS7901)	77	038 111 640	1	Crankcase Clutch Side, Blue(Type 1)
65	325 132 050	1	Piston Ring D=47 (DCS6401)		<b>038 111 641</b>	1	Crankcase Clutch Side, Blue (Type 2)
	394 132 020	1	Piston Ring D=50 (DCS7301)	79	038 250 200	1	Spike Bar
	038 132 020	1	Piston Ring D=52 (DCS7901)	80	038 111 080	1	Chain Catch
66	119 132 030	1	Piston Pin (DCS6401 & DCS7301)	81	908 005 165	1	Screw 5X16
	038 132 040	1	Piston Pin (DCS7901)	82	010 114 050	1	Tank Cap CPL
67	119 132 060	2	Spring Ring C12X1	83	963 228 030	1	O Ring 28X3
68	001 131 150	1	Decompression Valve	86	962 900 052	1	Radial Ring 15/24/7
69	908 005 205	4	Screw 5X20	87	962 900 061	1	Radial Ring 17X28X5/4
70	038 114 150	1	Spring with Threaded Insert(Type 1)	88	038 114 130	1	Spring CPL With Cap
	<b>038 114 151</b>	1	Spring with Threaded Insert (Type 2)	89	913 455 204	1	Screw 5,5X20
			[The Clamp (038 310 060) (Item # 2) Has to be turned 180° when Type 2 Spring is used]	90	038 114 130	1	Spring CPL With Cap
71	965 531 121	1	Gasket	91	038 114 190	1	Pot
				92	913 455 204	1	Screw 5,5X20
				93	038 114 140	1	Spring CPL with Cap
				94	908 005 305	6	Screw 5X30
				95	936 430 160	2	Spiral Clamping Pin 3X16
				96	038 111 042	1	Gasket
				97	934 660 250	1	Slotted Pin 6X24
				98	908 005 125	1	Screw 5X12
				99	010 245 030	1	Vent Valve
				100	038 232 010	2	Bolt

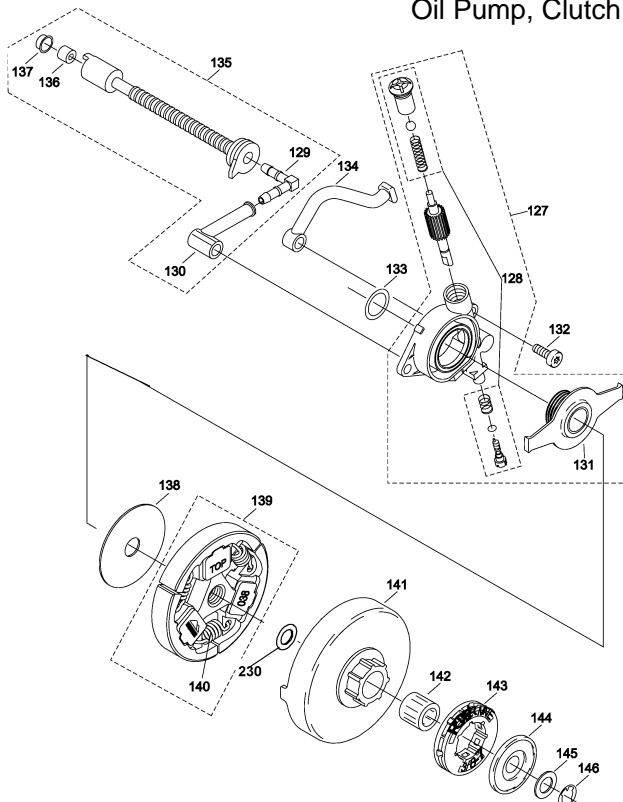
3 Model DCS6401  
 3 Model DCS7301  
 3 Model DCS7901

## Ignition Electronics, Starter



Item No.	Part No.	No. Used	Description
101	038 160 601	1	Starter Assy, Blue(Old 038 160 600)
102	928 405 000	1	Spring Washer
103	038 112 630	1	Fan Housing, Blue
104	001 161 010	1	Starter Grip
107	908 605 205	3	Screw M5X20
108	038 162 023	1	Cable Drum CPL(Old 038 162 021 & 038 162 022)
109	924 605 510	1	Washer 5,5X18X1,6
110	913 455 204	1	Screw 5,5X20 KST
111	980 114 835	1	Label DCS6401
	980 114 836	1	Label DCS7301
	980 114 837	1	Label DCS7901
112	038 112 020	1	Air Duct
113	970 502 110	1	Insulating Hose A6X0,5 L=140 (Sold by Meter)
114	038 143 020	1	Ignition Coil
115	038 143 030	1	Cable Harness
116	957 604 240	1	Plug Cap
118	965 401 011	1	Rubber Bush
119	970 311 540	1	Earth Cable
120	915 135 100	1	Screw BZ3,5X9,5
121	908 304 205	2	Screw 4X10X20 S27
122	038 111 110	2	Clip
123	*	1	Flywheel Assy
124	108 166 051	2	Starter Ratchet CPL
125	926 208 001	1	Spring Washer B8
126	920 208 024	1	Hexagonal Nut M8X1
181	038 162 050	1	Spacer
<b>Accessories</b>			
A01	108 164 020	1	Starter Rope 3.5mm Dia.X0.98M
	SD 4100 4.5	1	Starter Rope 9/64"X250' (3.6mm Dia. X 76.2M)
A02	965 603 014	1	Spark Plug

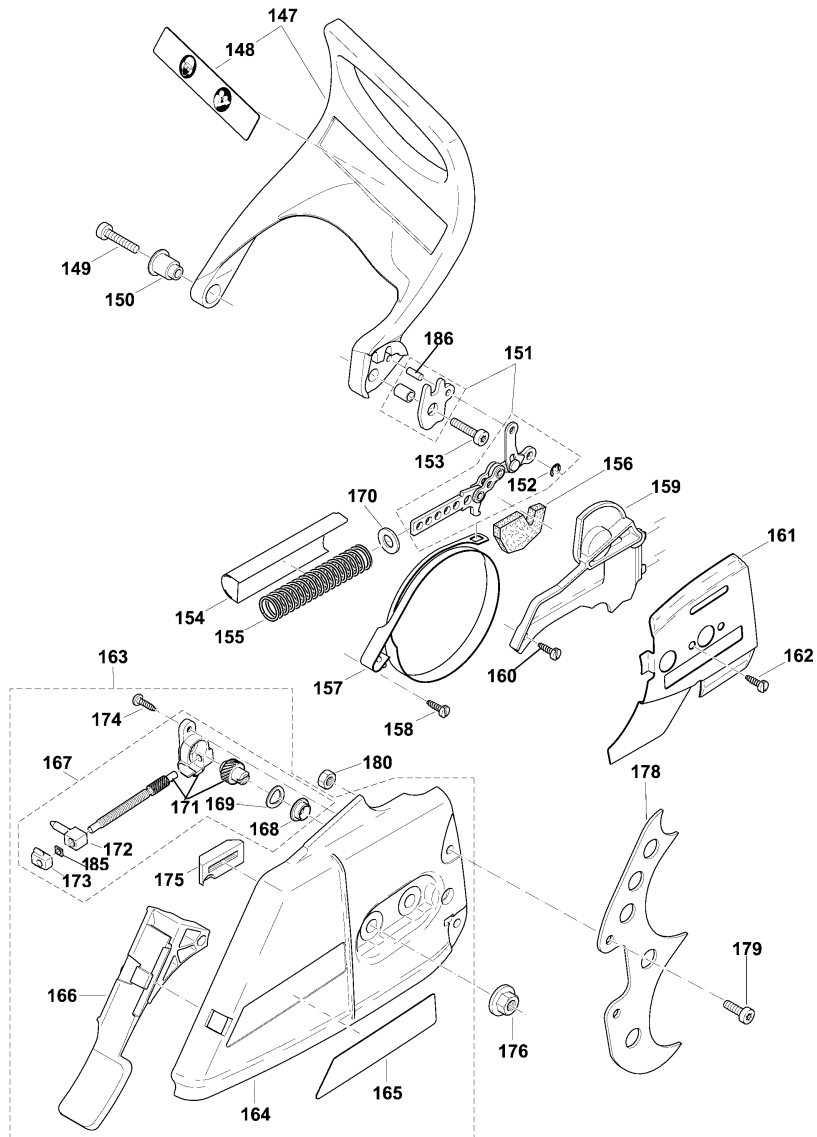
## Oil Pump, Clutch



Item No.	Part No.	No. Used	Description
127	038 245 010	1	Oil Pump CPL
128	030 245 070	1	Repair Kit
129	001 245 140	1	Angular Nipple
130	038 245 110	1	Oil Line
131	038 245 031	1	Pump Drive(Old 038 245 030)
132	908 005 125	2	Screw 5X12
133	038 224 020	1	Disc
134	038 245 060	1	Oil Line
135	038 245 020	1	Oil Suction Line CPL
136	900 005 066	1	Distance Ring
137	963 601 100	1	Strainer Screen
138	001 182 041	1	Guide Disc
139	038 180 010	1	Clutch Assy
140	024 184 021	3	Spring
141	*	1	Clutch Drum
142	*	1	Needle Cage 10X16X12
143	119 224 070	1	Rim Sprocket T=3/8", Z=7
144	001 224 011	1	Disc
145	021 224 010	1	Disc
146	927 408 000	1	Washer D=8X1,3
230	900 007 010	1	Washer

4 Model DCS6401  
 4 Model DCS7301  
 4 Model DCS7901

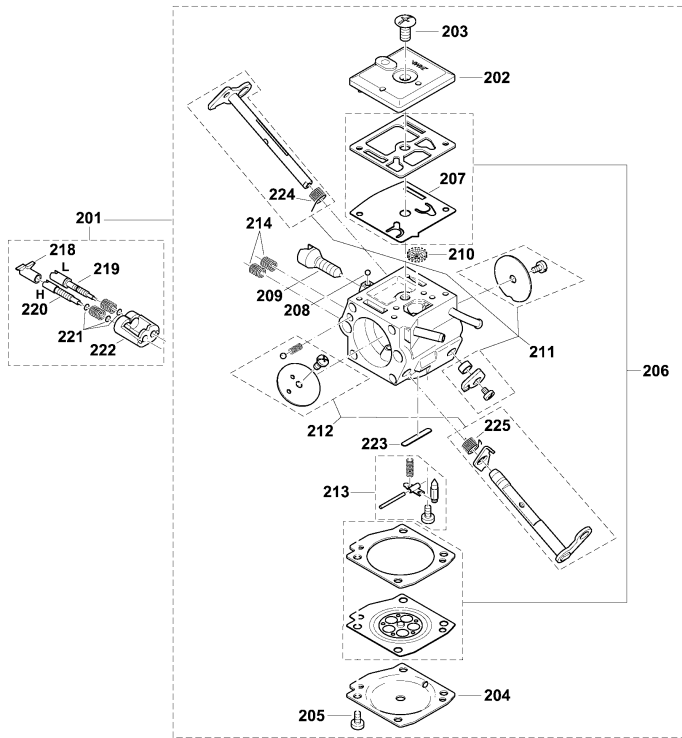
# Chain Brake



Item No.	Part No.	No. Used	Description	Item No.	Part No.	No. Used	Description
147	038 213 220	1	Hand Guard CPL	165	980 114 784	1	Makita Label
148	980 114 237	1	Label	166	038 213 190	1	Chip Guide
149	908 405 205	1	Screw 5X20	167	*	1	Chain Tensioner CPL
150	038 213 160	1	Bushing	168	038 213 080	1	Bushing
151	957 213 030	1	Braking Mechanism	169	<b>038 213 230</b>	1	Spring Washer (Old 038 213 210 - 2pcs)
152	927 304 000	1	Washer 4	170	028 213 010	1	Washer 12X9
153	908 005 206	1	Screw 5X20	171	*	1	Tensioning Screw
154	038 213 150	1	Pot	172	038 213 090	1	Tensioning Nut
155	038 213 130	1	Spring	173	038 213 070	1	Tensioning Screw Bearing
156	038 213 200	1	Foam Sponge	174	915 135 100	1	Screw BZ3,5X9,5
157	038 213 010	1	Brake Spring	175	024 213 240	1	Chain Guide
158	915 135 100	1	Screw BZ3,5X9,5	176	923 208 004	2	Hexagonal Nut M8
159	038 213 040	1	Plate	178	038 250 210	1	Spike Bar
160	915 135 100	1	Screw BZ3,5X9,5	179	908 005 125	2	Screw M5X12
161	038 111 030	1	Guide Plate	180	920 405 000	2	Hexagonal Nut M5
162	915 135 100	1	Screw BZ3,5X9,5	185	924 104 300	1	Washer (Old 038 213 280)
163	*	1	Sprocket Guard CPL, Blue	186	<b>935 940 100</b>	1	Cylindrical Pin 4X10
164	038 213 635	1	Sprocket Guard, Blue				
	<b>038 213 602</b>	<b>1</b>	<b>Sprocket Guard CPL</b> (Includes Item 167 Type 2)				

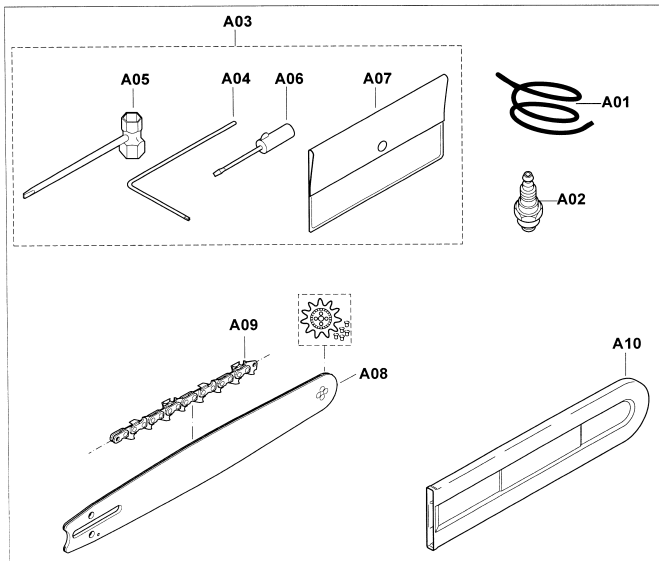
5 Model DCS6401  
 5 Model DCS7301  
 5 Model DCS7901

## Carburetor



Item No.	Part No.	No. Used	Description
201	038 153 021	1	Carburetor C3M (Old 038 153 020)
202	038 153 030	1	Pump Cover
203	038 153 360	1	Screw
204	038 153 040	1	Diaphragm Cover
205	001 153 020	4	Screw
206	038 153 060	1	Diaphragm/Gaskets Set (Type 1)
	038 153 050	1	Diaphragm/Gaskets W/Pump Diaphragm Rubber (Type 2)
207	038 153 070	1	Pump Diaphragm, Teflon
	038 153 370	1	Pump Diaphragm, Rubber 5/pk
208	038 153 210	1	Locking Ball
209	038 153 220	1	Idle Stop Screw S
210	028 153 180	1	Screen
211	957 153 061	1	Throttle Shaft Kit (Old 957 153 060)
212	957 153 051	1	Choke Shaft Kit (Old 957 153 050)
213	957 153 070	1	Control Parts
214	038 153 260	2	Spring
218	038 153 310	1	Limiter Cap
219	038 153 290	1	Idle Adjusting Screw L
220	038 153 300	1	Main Adjusting Screw H
221	038 153 250	3	Washer
222	038 153 320	1	Adjusting Guide
223	<b>038 153 350</b>	1	Plug
224	<b>038 153 150</b>	1	Spring
225	<b>038 153 100</b>	1	Spring
*	RB-101	1	Carburetor Rebuild Kit (038 153 060 & 957 153 070)

## Accessories

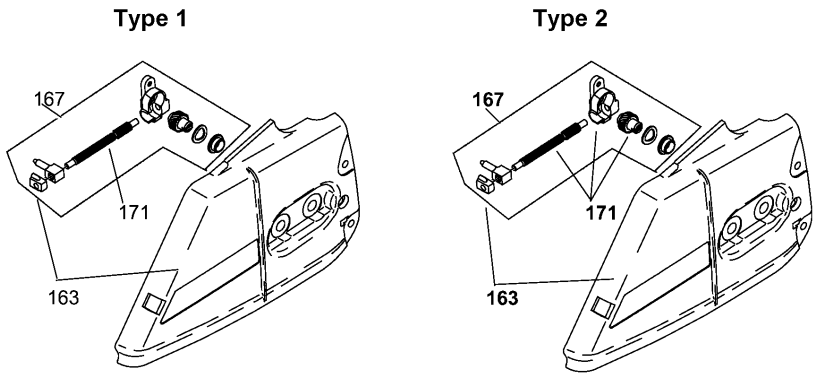


Item No.	Part No.	No. Used	Description
<u>Accessories</u>			
A01	108 164 020	1	Starter Rope 3.5Dia.X0.98M
	SD 4100 4.5	1	Starter Rope 9/64"X250'
A02	965 603 014	1	Spark Plug
A03	957 004 002	1	Tool CPL
A04	940 827 000	1	Torx Wrench
A05	941 719 131	1	Universal Wrench 13/19mm
A06	944 340 001	1	Screw Driver
A07	950 004 002	1	Plastic Bag
A08	445 045 655	1	18" Sprocket Nose Bar 3/8" 58G
	<b>445 050 655</b>	1	20" Sprocket Nose Bar 3/8" 58G
	<b>445 060 652</b>	1	24" Sprocket Nose Bar 3/8" 58G
A09	523 099 068	1	3/8" Chisel Chain 58G 18"
	523 099 069	1	3/8" Chisel Chain 58G 20"
	523 099 084	1	3/8" Chisel Chain 58G 24"
A10	952 100 643	1	Chain Cover For 15" - 18"
	952 100 653	1	Chain Cover For 20" - 24"
	952 100 171	1	Chain Cover For 29"

6 Model DCS6401  
 6 Model DCS7301  
 6 Model DCS7901

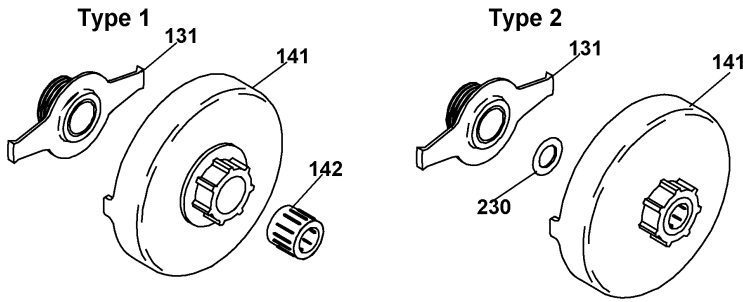
**SERVICE CHANGES**

**1. Change On Drive Pinion and Tensioning Screw.**



Item No.	Description	Type 1	Type 2	Type 3
163	Sprocket Guard CPL	038 213 600	<b>038 213 601</b>	038 213 602
167	Chain Tensioner CPL Set	957 213 020	<b>957 213 021</b>	
171	Tensioning Screw/Tensioning Screw Set	038 213 120	<b>957 213 040 (Set)</b>	
	Serial #	DCS6401	~ 34912	34913 ~
		DCS7301	~ 57180	57181 ~
		DCS7901	~ 30823	30824 ~

**2. New Clutch Drum / New Oil Pump Drive**



Item No.	Description	Type 1	Type 2
131	Pump Drive	038 245 031	
141	Clutch Drum	038 223 020	038 245 031
142	Needle Cage	962 210 024	962 300 009
320	Washer	-----	900 007 010

Above parts are interchangeable as a set.