



IT FRIGORIFERO SXS

Installazione Filtro dell'Acqua

PT FRIGORÍFICO SXS

Instalação de filtro de água

ES FRIGORÍFICO SXS

Instalación del filtro de agua

FR REFRIGERATEUR SXS

Installation du filtre à eau

EN REFRIGERATOR SXS

Water Filter Instalation

NL KOELKAST SXS

Plaatsen van het waterfilter

SW KYLSKÅP SXS

Montering av vattenfilter

DE KÜHLSCHRANK SXS

Installation des Wasserfilters

RU ХОЛОДИЛЬНИК С МОРОЗИЛЬНЫМ ОТДЕЛЕНИЕМ SXS

Установка водяного фильтра

Установка водяного фильтра

GR ΨΥΓΕΙΟ SXS

Εγκατάσταση φίλτρου νερού

DK KOMBISKAB SXS

Installering af vandfilter

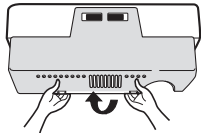
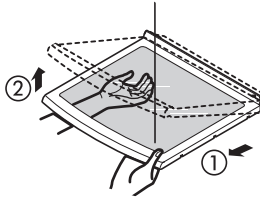
USER'S INSTRUCTION

EN Water Filter Installation

- **Install Water Filter (Applicable to some models only)**

- **Before Installing water filter**

1. Before installing the filter, take out the top shelf of the refrigerator after tilting it to the direction (①) and lifting it to the direction (②) and move it to the lower part.
2. Remove the lamp cover by pressing the protrusion under the cover and pulling the cover to the front.



- **Installing water filter**

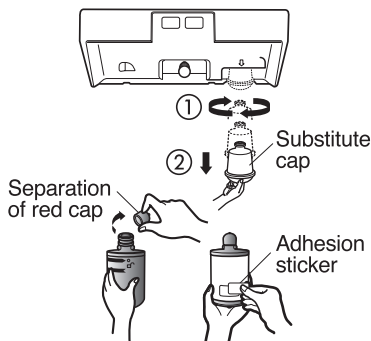
- **1. Initial installation of water filter**

Remove the filter substitute cap by turning it counterclockwise (①) by 90 degrees and pulling it down.

Note : Keep it safe to use it later when you do not use the filter.

Remove the red cap from the filter and attach the sticker. Insert the upper part of the filter (①) after aligning with the guideline marked on the control box, and fasten it by turning it clockwise by 90 degrees.

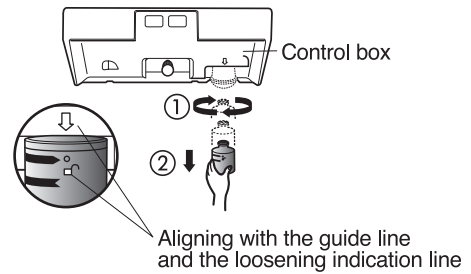
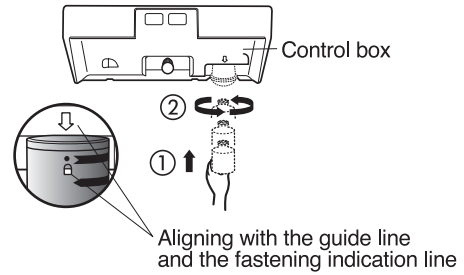
Note : Check that the guideline and the fastening indication line are aligned.



- **2. Replacement of water filter**

While holding the lower part of the filter, turn it counterclockwise (①) by 90 degrees and pull it down.

Note : Check that the guideline and the loosening indication line are aligned.



- **After installing water filter**

Reassemble the lamp cover and the top shelf of the refrigerator. To place the top shelf of the refrigerator, raise the front part of the shelf a bit so that the hook of the shelf is fit into the groove.

In order to clean the water filter system, drain water for about 3 min.

Note : Then open the door of the refrigerator and check for water droppings on the shelf under the filter.

