



**MARQUE: PHILIPS**  
**REFERENCE: HD5412/00**  
**CODIC: 4152743**

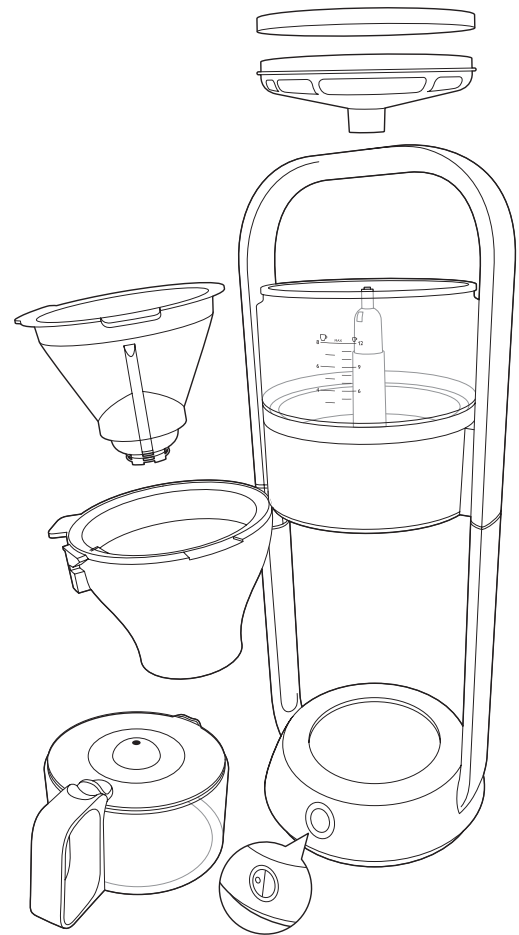
**NOTICE**  
↓

Always here to help you

Register your product and get support at  
[www.philips.com/welcome](http://www.philips.com/welcome)



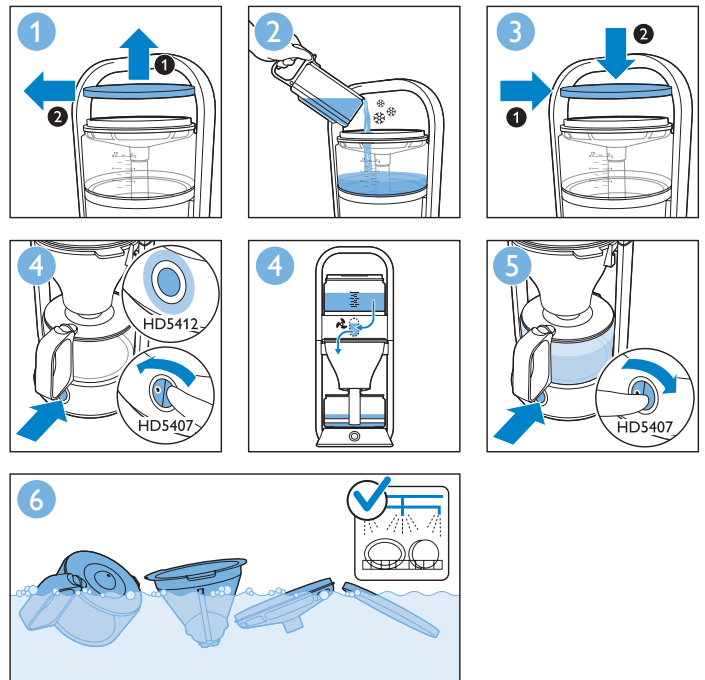
HD5412  
HD5407



HD5407

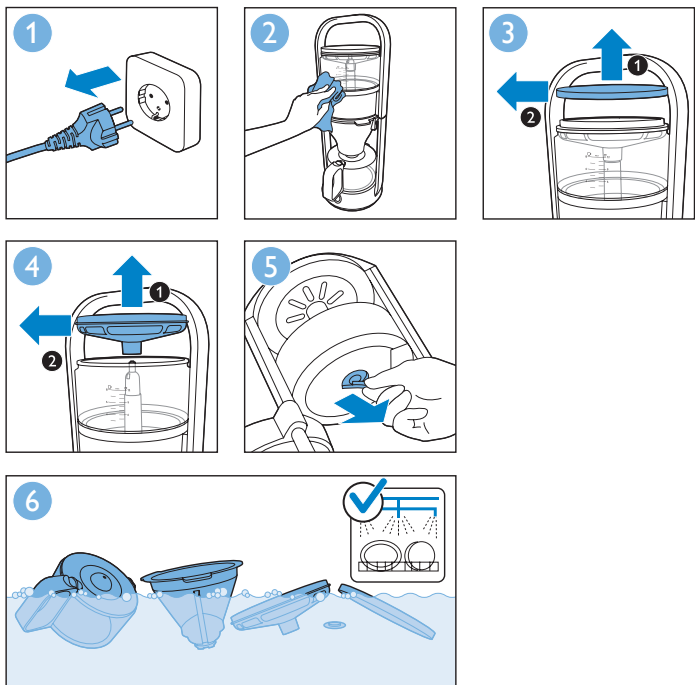
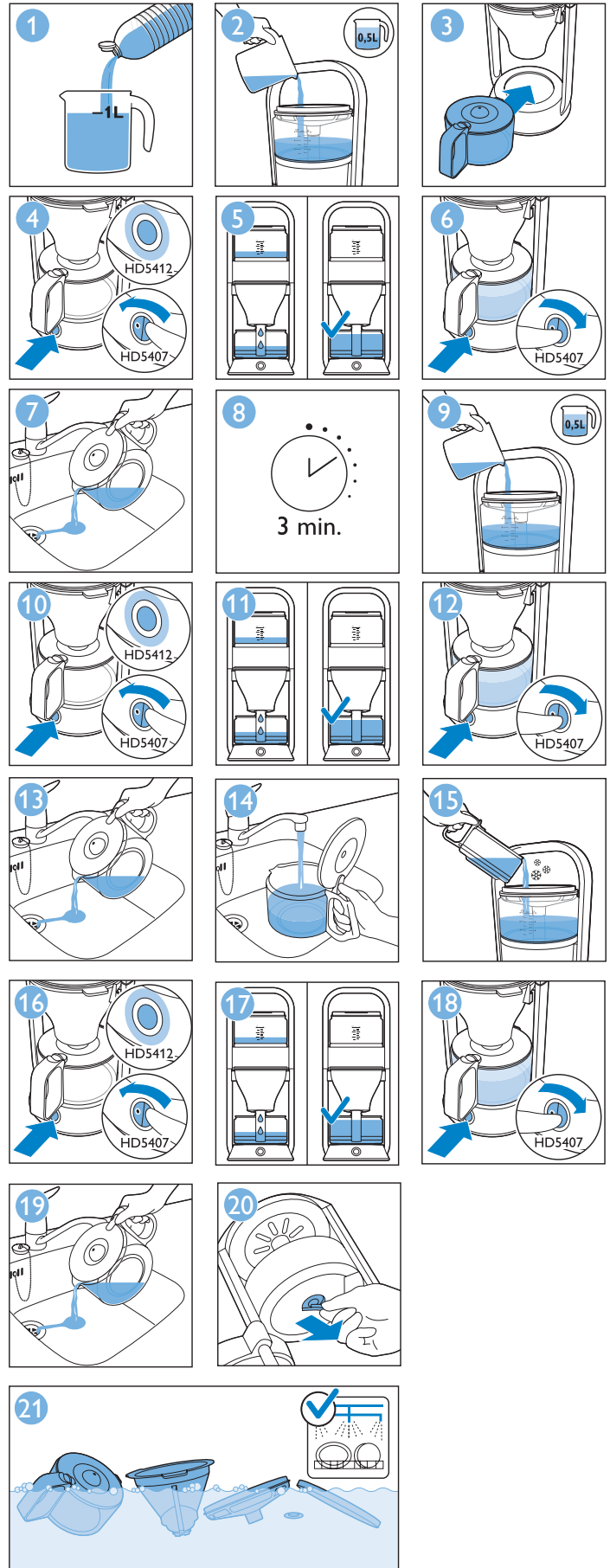
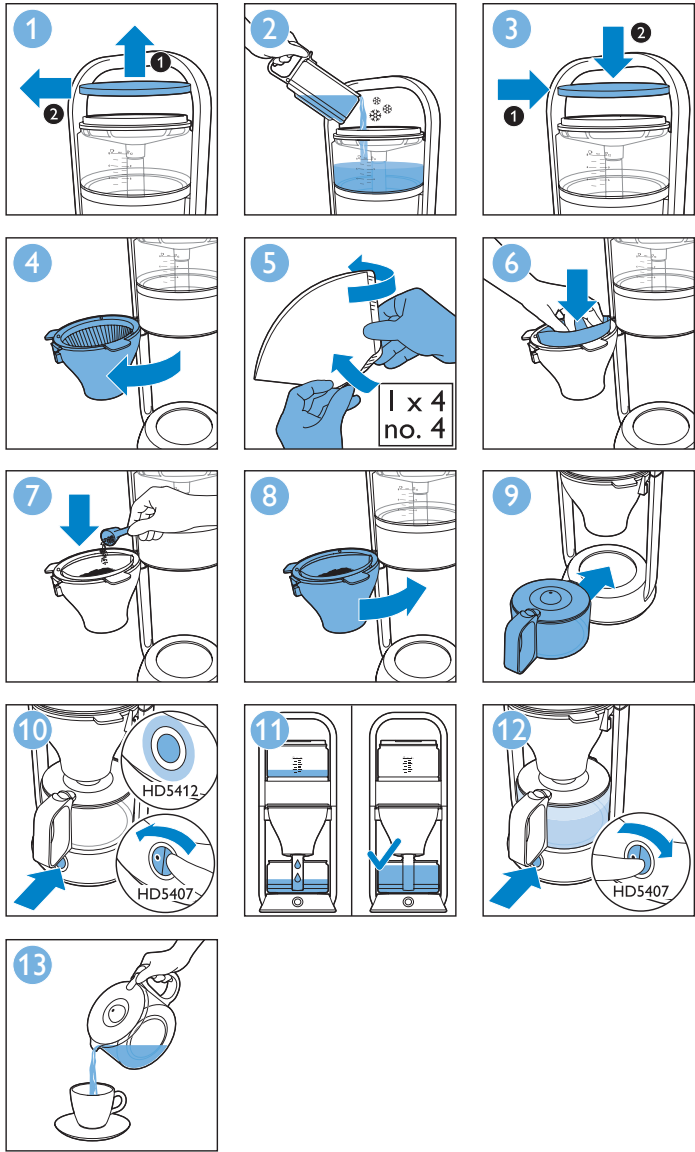
# User manual

# PHILIPS



[www.philips.com](http://www.philips.com)

100% recycled paper  
100% papier recyclé  
4222.200.0661.2



**Introduction**

Congratulations on your purchase and welcome to Philips! To fully benefit from the support that Philips offers, register your product at [www.philips.com/welcome](http://www.philips.com/welcome).

Philips Cafe Gourmet combines exceptionally aromatic coffee with an exclusive and eye-catching design. Thanks to the superior 'Boil & Brew' principle, the coffee is brewed under ideal conditions. This principle is derived from the classic coffee-brewing method of pouring a substantial quantity of water just off the boil onto fresh ground coffee. The striking design allows you to follow this process from beginning to end. The result is steaming hot coffee with the full flavour of manual drip-brewed coffee, conveniently prepared with a sophisticated coffee maker. Enjoy your Cafe Gourmet!

**Important**

Read this user manual carefully before you use the appliance and save it for future reference.

**Danger**

- Never immerse the appliance in water or any other liquid, nor rinse it under the tap.

**Warning**

- Check if the voltage indicated on the appliance corresponds to the local mains voltage before you connect the appliance.
- Do not use the appliance if the plug, the cord or the appliance itself is damaged.
- If the mains cord is damaged, you must have it replaced by Philips, a service centre authorised by Philips or similarly qualified persons in order to avoid a hazard.
- This appliance can be used by children aged from 8 years and above and persons with reduced physical, sensory or mental capabilities or lack of experience and knowledge if they have been given supervision or instruction concerning use of the appliance in a safe way and understand the hazards involved. Children shall not play with the appliance. Cleaning and user maintenance shall not be made by children without supervision.
- Do not let the mains cord hang over the edge of the table or worktop on which the appliance stands.
- Never connect this appliance to an external timer switch or a separate remote control system to avoid a hazardous situation.
- Do not remove the lid of the water tank cover while the water is boiling.

**Caution**

- Do not place the appliance on a hot surface and do not let the mains cord come into contact with hot surfaces.
- Unplug the appliance if problems occur during brewing and before you clean it.
- This appliance is intended to be used in household and similar applications such as:
  - staff kitchen areas in shops, offices and other working environments;
  - farm houses;
  - by clients in hotels, motels and other residential type environments;
  - bed and breakfast type environments;

**Electromagnetic fields (EMF)**

This Philips appliance complies with all standards regarding electromagnetic fields (EMF). If handled properly and according to the instructions in this user manual, the appliance is safe to use based on scientific evidence available today.

**Ordering accessories**

To buy accessories or spare parts, visit [www.shop.philips.com/service](http://www.shop.philips.com/service) or go to your Philips dealer. You can also contact the Philips Consumer Care Centre in your country (see the worldwide guarantee leaflet for contact details).

**Environment**



- Do not throw away the appliance with the normal household waste at the end of its life, but hand it in at an official collection point for recycling. By doing this, you help to preserve the environment. (Fig. 1)

**Guarantee and support**

If you need information or support, please visit [www.philips.com/support](http://www.philips.com/support) or read the separate worldwide guarantee leaflet.

**Troubleshooting**

This chapter summarises the most common problems you could encounter with the appliance. If you are unable to solve the problem with the information below visit [www.philips.com/support](http://www.philips.com/support) for a list of frequently asked questions or contact the Consumer Care Centre in your country.

Problem	Solution
The appliance fails to heat the water to boiling point.	Make sure that the appliance is plugged in.
	Make sure that the wall socket is live.
The water tank does not drain properly or does not drain at all.	Make sure that the appliance is switched on.
	Make sure that the cover of the water tank is placed correctly.
The water flows straight into the jug when I fill the water tank.	Make sure that the cover of the water tank is placed correctly.
	Descalc and clean the coffeemaker. Pay special attention to the rubber insert in the outflow opening of the water tank (see chapters  and  ).
The water flows straight into the jug when I fill the water tank.	Make sure that you place the cover on the water tank before you fill it.
	If you have just brewed coffee, let the appliance cool down for 3 minutes before you brew coffee again.



Always flush the appliance with fresh water before first use. HD5412 only: the appliance switches off automatically after 120 minutes.



In case you want to brew another jug of fresh coffee right away, switch off the appliance and let it cool down for 3 minutes.



Never use scouring pads, abrasive cleaning agents or aggressive liquids such as petrol or acetone to clean the appliance.



Regular descaling prolongs the lifetime of the appliance and guarantees optimal brewing results. Descalc the appliance every two months if you use soft water (up to 13dH) or every month if you use hard water (over 13dH). When you notice excessive steaming or the brewing time increases, descale more often. To descale the appliance, we advise you to use white vinegar (up to max 8% acetic acid), as other products may cause damage to the appliance.