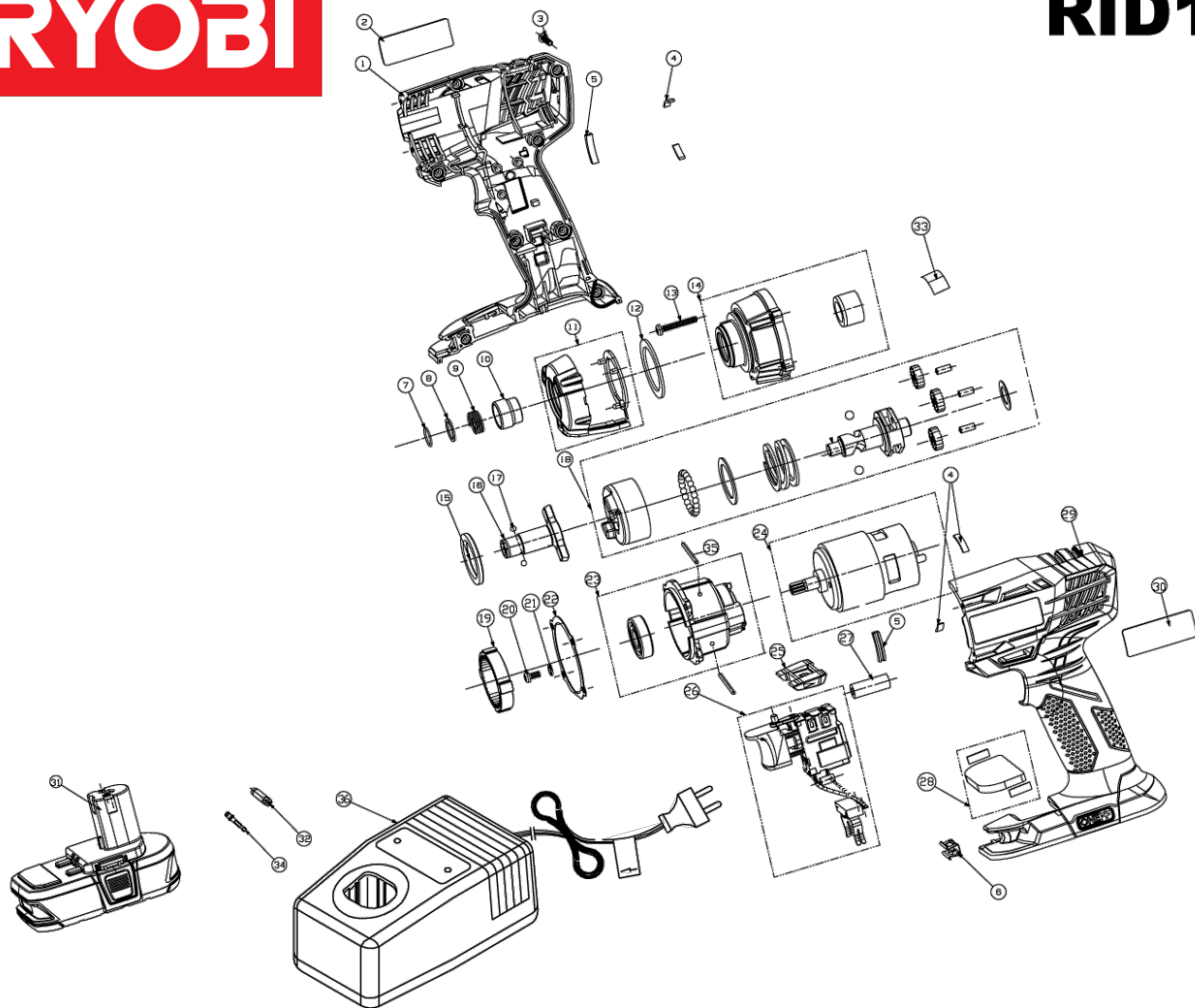


RID1801M VIS.CHOC 18V ONE+ 0B XXX

5133001168 - RID1801M - 4000444052





Position	Quantité	Désignation	Référence	EAN
001	1	CARTER MOTEUR COMPLE	5131031954	4058546130596
002	1	ETIQUETTE	5131031955	4058546130602
003	8	VIS	5131000000	
004	4	TAMPON E.CAOUTCHOUC	5131029452	4058546183264
005	2	BUTOIR E.CAOUTCHOUC	5131000000	
006	1	PORTE-EMBOUTS	5131031687	4058546193171
007	1	CLIP DE RETENUE	5131012418	4058546168834
008	1	RONDELLE	5131017936	4058546106775
009	1	RESSORT	5131012420	4058546168841
010	1	DOUILLE	5131029453	4058546119256
011	1	PLATIN.ELECTRONIQUE	5131029454	4058546183271
012	1	PRODUIT ALVEAOLAIRE	5131029455	4058546183288
013	4	VIS	5131000000	
014	1	PLAQUE D'ENGRENAGES	5131029456	4058546119263
015	1	RONDELLE	5131031956	4058546130619
016	1	PORTE-D'EMBOUTS	5131029457	4058546119270
017	2	BILLE	5131017937	4058546172183
018	1	ARBRE A CAMES	5131031957	4058546130626
019	1	ROUE A DENTURE INT.	5131031958	4058546130633
020	2	VIS	5131011428	4058546168377
021	2	RONDELLE RESSORT	5131019721	4058546108670
022	1	JOINT PLAT	5131029460	4058546183318
023	1	HABILLAGE DE BOITE	5131031959	4058546130640
024	1	MOTOR COMPLET	5131031960	4058546130657
025	1	BOUTON INVERSEUR	5131029464	4058546119317
026	1	INTER.AV.MOD.ELECTR	5131029463	4058546119300
027	1	ENTRETOISE	5131000000	
028	1	AIMANT	5131031877	4058546130152
030	1	ETIQUETTE	5131031961	4058546194468
032	1	EMBOUT DE VISSAGE	5131031962	4058546194475
033	1	ETIQUETTE	5131031963	4058546130664
034	1	PORTE-D'EMBOUTS	5131031964	4058546130671
035	2	GOUPILLE	5131031965	4058546194482