

## ENGLISH

### Introduction

Congratulations on your purchase and welcome to Philips!  
To fully benefit from the support that Philips offers, register your product at [www.philips.com/welcome](http://www.philips.com/welcome).

### General description (Fig. 1)

- A** Spray nozzle
- B** Cap of filling opening
- C** Spray button
- D** Steam control
  - **CALC CLEAN**= Calc-Clean function
  - 0 = no steam
  - ☁ = minimum steam
  - ☁☁ = maximum steam
- E** Steam boost button
- F** Auto-off light (GC2960 only)
- G** Mains cord
- H** Temperature light
- I** Anti-Calc tablet (GC2960/GC2930/GC2920 only)

*Note: Anti-Calc tablet not visible from the outside.*

- J** Type plate
- K** Water tank
- L** Temperature dial
- M** Soleplate

### Important

Read this user manual carefully before you use the appliance and save it for future reference.

#### Danger

- Never immerse the iron in water.

#### Warning

- Check if the voltage indicated on the appliance corresponds to the local mains voltage before you connect the appliance.
- Do not use the appliance if the plug, the mains cord or the appliance itself shows visible damage, or if the appliance has been dropped or leaks.
- If the mains cord is damaged, you must have it replaced by Philips, a service centre authorised by Philips or similarly qualified persons in order to avoid a hazard.
- Never leave the appliance unattended when it is connected to the mains.
- This appliance is not intended for use by persons (including children) with reduced physical, sensory or mental capabilities, or lack of experience and knowledge, unless they have been given supervision or instruction concerning use of the appliance by a person responsible for their safety.
- Children should be supervised to ensure that they do not play with the appliance.
- Do not let the mains cord come into contact with the hot soleplate of the iron.

#### Caution

- Only connect the appliance to an earthed wall socket.
- Check the mains cord regularly for possible damage.
- The soleplate of the iron can become extremely hot and may cause burns if touched.
- When you have finished ironing, when you clean the appliance, when you fill or empty the water tank and also when you leave the iron even for a short while: set the steam control to position 0, put the iron on its heel and remove the mains plug from the wall socket.
- Always place and use the iron on a stable, level and horizontal surface.
- Do not put perfume, vinegar, starch, descaling agents, ironing aids or other chemicals in the water tank.
- This appliance is intended for household use only.

#### Electromagnetic fields (EMF)

This Philips appliance complies with all standards regarding electromagnetic fields (EMF). If handled properly and according to the instructions in this user manual, the appliance is safe to use based on scientific evidence available today.

### Before first use

- 1 Remove any sticker or protective foil from the soleplate.
- 2 Let the iron heat up to maximum temperature and pass the iron over a piece of damp cloth for several minutes to remove any residues from the soleplate.

### Preparing for use

#### Filling the water tank

Do not put perfume, vinegar, starch, descaling agents, ironing aids, chemically descaled water or other chemicals in the water tank.

- 1 Switch off the appliance and unplug it.
- 2 Set the steam control to position 0 (= no steam) (Fig. 2).
- 3 Open the cap of the filling opening.
- 4 Tilt the iron and fill the water tank up to maximum level under the tap (Fig. 3).

*Note: Do not fill the water tank beyond the MAX indication.*

*Note: If the tap water in your area is very hard, we advise you to use distilled water. Do not use chemically descaled water.*

- 5 Close the cap of the filling opening ('click').

#### Selecting the temperature and the steam settings

Fabric type	Temperature setting	Steam setting	Steam boost
Linen	MAX	☁☁	Yes
Cotton	●●●	☁☁	Yes
Wool	●●	☁	N.A.
Silk	●	0	N.A.
Synthetic fabrics (e.g. Acrylic, nylon, polyamide, polyester).	●	0	N.A.

- Check the laundry care label for the required ironing temperature: If you do not know what kind or kinds of fabric an article is made of, determine the right ironing temperature by ironing a part that will not be visible when you wear or use the article.
- Silk, woollen and synthetic materials: iron the reverse side of the fabric to prevent shiny patches. Avoid using the spray function to prevent stains.

- 1 To set the appropriate ironing temperature, turn the temperature dial to the appropriate position (see 'Temperature and steam settings table') (Fig. 4).
- 2 Set the appropriate steam setting (see 'Temperature and steam settings table').

*Note: Make sure that the steam setting you select is suitable for the set ironing temperature.*

- 3 Put the iron on its heel.
- 4 Put the mains plug in an earthed wall socket.
  - ▶ The temperature light goes on.
- 5 When the temperature light goes out, wait a while before you start ironing.
  - ▶ During ironing, the temperature light goes on from time to time. This indicates that the iron is heating up to the set temperature.

### Using the appliance

*Note: The iron may give off some smoke when you use it for the first time. This stops after a short while.*

#### Steam ironing

- 1 Make sure that there is enough water in the water tank.
- 2 Set the recommended ironing temperature (see chapter 'Preparing for use', 'Temperature and steam setting table').
- 3 Set the appropriate steam setting. Make sure that the steam setting is suitable for the ironing temperature selected:
  - ☁ for minimum steam (temperature settings ●● and ●●●).
  - ☁☁ for maximum steam (temperature settings ●●● to MAX).

*Note: The iron starts to produce steam as soon as it has reached the set temperature.*

#### Steam ironing with extra steam (GC2960/GC2930/GC2920 only)

- 1 For extra steam during ironing, press and hold the steam boost button. (Fig. 5)

Register your product and get support at  
[www.philips.com/welcome](http://www.philips.com/welcome)

## GC2900 SERIES



# PHILIPS

### Ironing without steam

- 1 Set the steam control to position 0 (= no steam) (Fig. 2).
- 2 Set the recommended ironing temperature (see chapter 'Preparing for use', 'Temperature and steam setting table').

### Features

#### Spray function

You can use the spray function at any temperature to moisten the article to be ironed. This helps remove stubborn creases.

- 1 Make sure that there is enough water in the water tank.
- 2 Press the spray button several times to moisten the article to be ironed (Fig. 6).

#### Steam boost function

A powerful boost of steam helps to remove very stubborn creases. The steam boost function only works at temperature settings between ●●● and MAX.

- 1 Press and release the steam boost button (Fig. 5).

#### Vertical shot of steam (GC2960/GC2930/GC2920 only)

You can also use the steam boost function when you hold the iron in vertical position. This is useful for removing creases from hanging clothes, curtains etc.

- 1 Hold the iron in vertical position and press and release the steam boost button (Fig. 7).

Never direct the steam at people.

#### Drip stop

This iron is equipped with a drip-stop function: the iron automatically stops producing steam when the temperature is too low to prevent water from dripping out of the soleplate. When this happens you hear a click sound.



[www.philips.com](http://www.philips.com)

Mixed Sources  
Cert no. DNV-COC-000142  
FSC © 1996 FSC www.fsc.org

4239.000.7814.1

## Auto-off function (GC2960 only)

The auto-off function automatically switches off the iron if it has not been moved for a while.

- ▶ The red auto-off light flashes to indicate that the iron has been switched off by the auto-off function (Fig. 8).

To let the iron heat up again:

- 1 Pick up the iron or move it slightly.
  - ▶ The auto-off light stops flashing.
  - ▶ If the temperature of the soleplate has dropped below the set ironing temperature, the temperature light goes on.
- 2 If the temperature light goes on after you have moved the iron, wait for it to go out before you start ironing.

*Note: If the temperature light does not go on after you move the iron, the soleplate still has the right temperature and the iron is ready for use.*

## Cleaning and maintenance

### Cleaning

- 1 Set the steam control to position 0, remove the plug from the wall socket and let the iron cool down.
- 2 Wipe flakes and any other deposits off the soleplate with a damp cloth and a non-abrasive (liquid) cleaning agent.

To keep the soleplate smooth, avoid hard contact with metal objects. Never use a scouring pad, vinegar or other chemicals to clean the soleplate.

- 3 Clean the upper part of the iron with a damp cloth.
- 4 Regularly rinse the water tank with water. Empty the water tank after you have rinsed it (Fig. 9).

### Double-Active Calc System (GC2960/GC2930/GC2920 only)

The Double-Active Calc System consists of an Anti-Calc tablet inside the water tank combined with the Calc-Clean function.

- The Anti-Calc tablet prevents scale from clogging the steam vents. The tablet is constantly active and does not need to be replaced (Fig. 10).
- The Calc-Clean function removes scale particles from the iron.

### Calc-Clean function

Use the Calc-Clean function once every two weeks. If the water in your area is very hard (i.e. when flakes come out of the soleplate during ironing), use the Calc-Clean function more frequently.

- 1 Make sure the appliance is unplugged.
- 2 Set the steam control to position 0.
- 3 Fill the water tank to the maximum level.

Do not pour vinegar or other descaling agents into the water tank.

- 4 Set the temperature dial to MAX (Fig. 11).
- 5 Put the mains plug in an earthed wall socket.
- 6 Unplug the iron when the temperature light goes out.
- 7 Hold the iron over the sink. Push the steam control to the Calc-Clean position and hold it. Gently shake the iron to and fro (Fig. 12).
  - ▶ Steam and boiling water come out of the soleplate. Impurities and flakes (if any) are flushed out.
- 8 Release the steam control as soon as all the water in the tank has been used up.
- 9 Repeat the Calc-Clean process if the iron still contains a lot of impurities.

### After the Calc-Clean process

- 1 Put the plug back into the wall socket and let the iron heat up to let the soleplate dry.
- 2 Unplug the iron when the temperature light goes out.
- 3 Move the iron gently over a piece of used cloth to remove any water stains that may have formed on the soleplate.

### Storage

- 1 Set the steam control to position 0, remove the plug from the wall socket and let the iron cool down.
- 2 Wind the mains cord round the cord storage facility (Fig. 13).
- 3 Store the iron on its heel in a safe and dry place.

## Environment

- Do not throw away the appliance with the normal household waste at the end of its life, but hand it in at an official collection point for recycling. By doing this, you help to preserve the environment (Fig. 14).

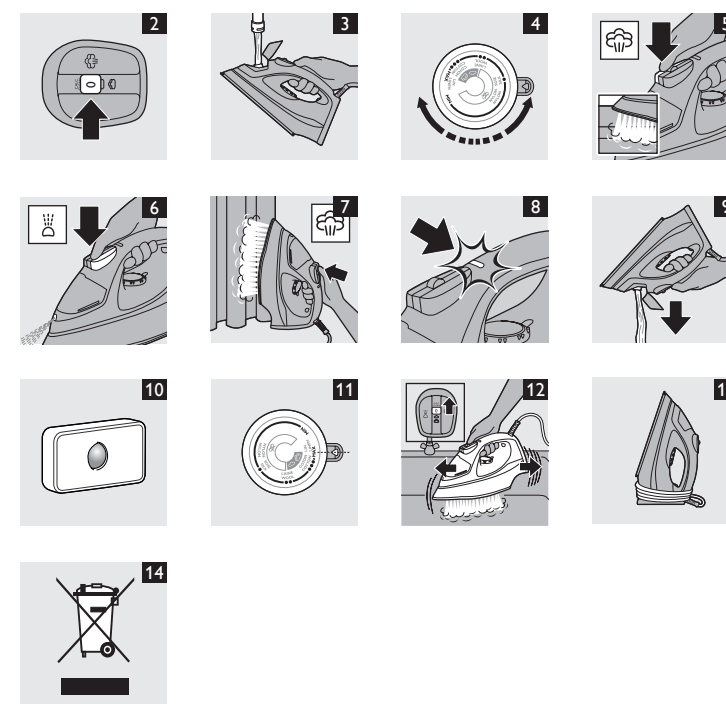
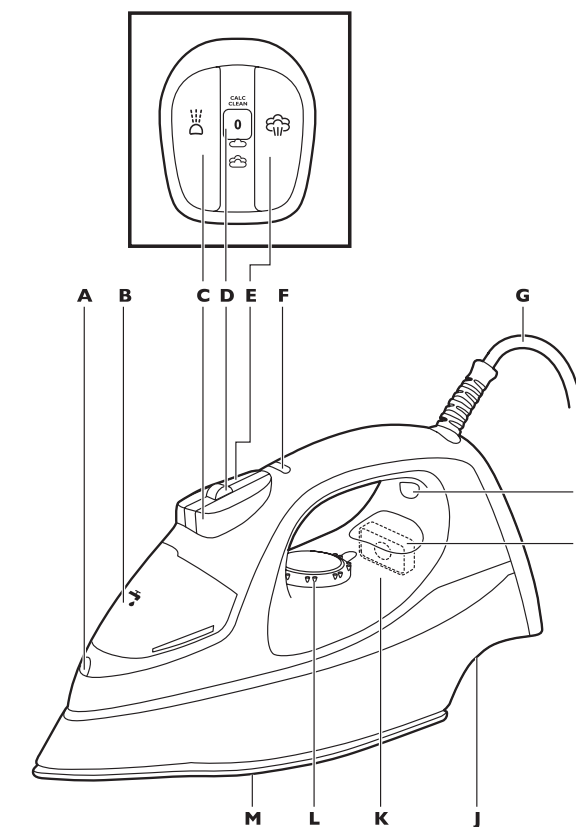
## Guarantee & service

If you need service or information or if you have a problem, please visit the Philips website at [www.philips.com](http://www.philips.com) or contact the Philips Consumer Care Centre in your country (you find its phone number in the worldwide guarantee leaflet). If there is no Consumer Care Centre in your country, go to your local Philips dealer.

## Troubleshooting

This chapter summarises the most common problems you could encounter with the appliance. If you are unable to solve the problem with the information below, contact the Consumer Care Centre in your country.

Problem	Cause	Solution
The iron is plugged in, but the soleplate is cold.	There is a connection problem.	Check the mains cord, the plug and the wall socket.
	The temperature dial is set to MIN.	Set the temperature dial to the required position.
The iron does not produce any steam.	There is not enough water in the water tank.	Fill the water tank (see chapter 'Preparing for use', section 'Filling the water tank').
	The steam control is set to position 0.	Set the steam position to ☁ or ☁☁ (see chapter 'Using the appliance', section 'Steam ironing').
	The iron is not hot enough and/or the drip-stop function has been activated.	Set an ironing temperature that is suitable for steam ironing (●● to MAX). Put the iron on its heel and wait until the temperature light goes out before you start ironing.
The steam boost function does not work properly.	You have used the steam boost function too often within a very short period.	Continue ironing in horizontal position and wait a while before you use the steam boost function again.
	The iron is not hot enough.	Set an ironing temperature at which the steam boost function can be used (●●● to MAX). Put the iron on its heel and wait until the temperature light goes out before you use the steam boost function.
Flakes and impurities come out of the soleplate during ironing.	Hard water forms flakes inside the soleplate.	Use the Calc-Clean function one or more times (see chapter 'Cleaning and maintenance', section 'Calc-Clean function').
The light on the handle flashes (GC2960 only).	The auto-off function has been activated (see chapter 'Features', section 'Auto-off').	Pick the iron up or move it slightly to deactivate the auto-off function. The auto-off light goes out.
Water droplets drip on the fabric during ironing.	You have not closed the cap of the filling opening properly.	Press the cap until you hear a click.
	The set temperature is too low for steam ironing.	Set an ironing temperature that is suitable for steam ironing (●● to MAX). Put the iron on its heel and wait until the temperature light goes out before you start ironing.
	You have put an additive in the water tank.	Rinse the water tank and do not put any additive in the water tank.
	You have used the steam boost function at a setting below ●●●.	Set the temperature dial to a setting between ●●● and MAX.
	You have used the steam boost function too often within a short period.	Continue ironing in horizontal position and wait a while before you use the steam boost function again.



Problem	Cause	Solution
Water drips from the soleplate after the iron has cooled down or has been stored.	You have put the iron in horizontal position while there was still water in the water tank.	Empty the water tank and set the steam control to position 0 after use. Store the iron on its heel.
Water spots appear on the garment during ironing.	These wet spots may be caused by steam that has condensed onto the ironing board.	Iron wet spots without steam from time to time to dry them.
	If the underside of the ironing board is wet,	To prevent steam from condensing onto the ironing board, use an ironing board with wire mesh top, of dry cloth.