

More than a navigator: a leader



MAP790/MAP690
PORTABLE NAVIGATION



COMPACT SIZE (mm): 127.2 (W) x 82.2 (H) x 20 (D)

- **GENERAL:** • High Definition 4.3" non-reflective LCD display for crystal clear viewing • Built-in RDS-TMC tuner for traffic information • Built-in Bluetooth® interface for Hands-free and Audio Streaming (A2DP) • Sirf III GPS module with 20-channel receiver • External GPS antenna capable • 400 MHz CPU • 2 GB flash memory • SD card slot with up to 8 GB capacity • Lithium ion rechargeable battery • Equipped with postcode search (handles 5-digit & 8-digit codes for UK)
- **PACKAGE CONTENT:** AC adapter, Car charger, USB cable, Vibration-free mounting kit, TMC antenna, Stylus, Backup DVD, Quick start guide
- **NAVIGATION:** • 360° 3D display mode for: 3D city maps, 3D landmarks, 3D terrain • Simple mode or Advanced mode operation • Free TMC traffic information • Signpost information • Lane indicator • Spoken street and city names • Rich POI database • Trip computer • Speed limit information • Speed camera compatible • Navigation programme languages: 32 • Voice guidance languages: 38 • TTS voice languages: 11

*Speed camera warning may be prohibited in some countries. **3D information is not available everywhere. ***Only 18 languages available for Setting and Bluetooth menu. ****Toll-Free Traffic Information is not available in all countries.



The stand installs in seconds, with a large suction cup that affixes firmly on the dash. Accommodates virtually any make of car (dashboard disc is optional).

Enjoy music, pictures and videos thanks to an SD/SDHC Memory Card slot and a mini USB port



360° 3D Realistic View



3D Buildings



3D Landmarks

Comfort and clear instructions promote safe driving. This is the reason why Clarion considers it so important to provide high quality graphics in its navigation systems, offering route guidance with detailed and realistic map views. Many cities are represented with 3D buildings, landmarks and monuments, shown in their actual shapes in great detail.

Elevation Modelling Terrain



Topographical view



Modelling Terrain in 3D

While driving, hills and mountains are rendered in 3D to better represent your real-world driving environment. 3D landmark data is integrated seamlessly into the graphical rendering in 3D mode and does not block the view of POIs and other useful information.

Lane Indicator and Motorway Signposts



Lane Indicator



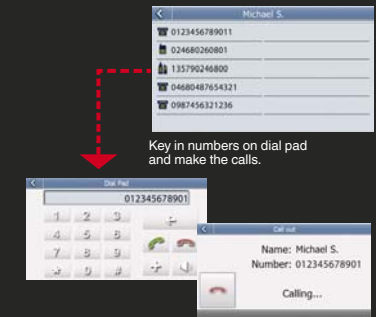
Signposts

The system shows which lanes allow you to exit and which ones continue ahead. All lanes on the same road segment are rendered, with the lane you need to take highlighted. On the motorway, this information is enhanced by an extremely clear representation of actual signposts on the road.



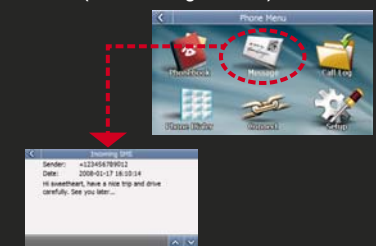
Make a call from the touch screen

Just touch the name on the phonebook screen to initiate and place a call. If your entry has multiple stored phone numbers, you can select which one to call. Of course, you can also manually key in the phone number.



Key in numbers on dial pad and make the calls.

SMS (Short Message Service)



Popup appears for incoming SMS messages, and you can save downloaded docs in a designated file. Messages can be imported automatically right after connection, or manually.

NAVIGATION

Navigation menu



Roads, junctions and bridges with elevations

*Illustration of bridge with shadow underneath

Trip Computer



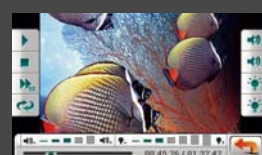
Text to Speech



While streets are displayed on the screen, the voice guidance tells you their actual name. Also, the system is able to tell you the direction to take, so when driving in Paris you would hear "... After 100m, turn left onto Rue Washington..."

ENTERTAINMENT

Movie Player



Enjoy portable cinema function anywhere with popular movie formats saved on MMC or SD cards up to 8 GB.

Music Player



Transform your MAP navigation system instantly into a handy touch screen MP3/WMA compatible music player.

Photo browser



Create your own personal photo album and share it with friends wherever you go.

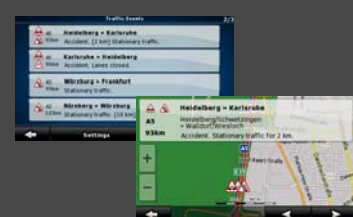
COMMUNICATION

Bluetooth®



Built-in enhanced Bluetooth functionality lets you fully enjoy the MAP790 / MAP690. Safe driving does not demand that you compromise on powerful communication. Phone book management • POP message for incoming SMS • Audio Streaming (A2DP) • Audio Video Remote Control Profile (AVRCP)

RDS-TMC



Receive instant traffic information through the built-in TMC receiver. The MAP790 / MAP690 can receive toll-free traffic information (TMC). You are always informed whenever new information is broadcast.

*Toll-Free Traffic Information is not available in all countries.

MAP COVERAGE

MAP790 with preinstalled map data for 44 countries. The complete solution for all of Europe.

Albania, Andorra, Austria, Belarus, Belgium, Bosnia-Herzegovina, Bulgaria, Croatia, Czech Republic, Denmark, Estonia, Finland, France, Malta, Monaco, Macedonia, Germany, Greece, Hungary, Ireland, Italy, Latvia, Lithuania, Luxembourg, Moldova, the Netherlands, Norway, Poland, Portugal, Romania, San Marino, Serbia, Montenegro, Slovakia, Slovenia, Spain, Gibraltar, Sweden, Switzerland, Liechtenstein, Turkey, Ukraine, United Kingdom, the Vatican

MAP690 and SD card with map data. Your flexible way to navigate

MAP690EEU	MAP690RUS	MAP690TRK
Eastern Europe package contains MAP690 + SD690EEU	Russia package contains MAP690 + SD690RUS	Truck package contains MAP690 + SD690TRK
<ul style="list-style-type: none"> • TeleAtlas maps and local map data provider for more detailed coverage • Rich POI database • 3D landmarks and petrol stations • 3D city maps (Hungary only) • Cross border routing in Eastern Europe • Major road network for Western Europe 	<ul style="list-style-type: none"> • Up-to-date TeleAtlas coverage for Russia • 3D landmarks • 3D petrol stations • Lane indicator 	<ul style="list-style-type: none"> • Software supports vehicle specification (height, weight, length, hazardous goods) • Route calculation respects physical and legal restriction for trucks • Truck-specific Points of Interest

PORTABLE NAVIGATION ACCESSORIES

CMK002 Vibration-free mounting bracket including self-adhesive disc connector MAP790, 690, 780, 680, 770, 670, 370, 560, 360	PBK431 PND socket for CMK002 For MAP790, 690	PNC432 Protection case For MAP790, 690	PCC001 Car charger For MAP790, 690, 780, 680, 770, 670, 370, 560, 360	GPA001 External GPS antenna For MAP790, 690, 780, 680, 770, 670, 370, 560, 360	BKE502 Waterproof protection case For MAP780, 680
PBK430 PND socket for CMK002 For MAP780, 680, 770, 670	PBK350 PND socket for CMK002 For MAP560, 370, 360	PNC431 Protection case For MAP780, 680, 770, 670	FM9 External TMC receiver For MAP560, 370, 360	NAVIGATION MAP UPDATE Please see our website for the latest available map updates	
PBK350 PND socket for CMK002 For MAP560, 370, 360	PNC350 Protection case For MAP560, 370, 360	BMK001 Bicycle mount kit For MAP780, 680, 770, 670, 370, 560, 360			