

SH 338 IP

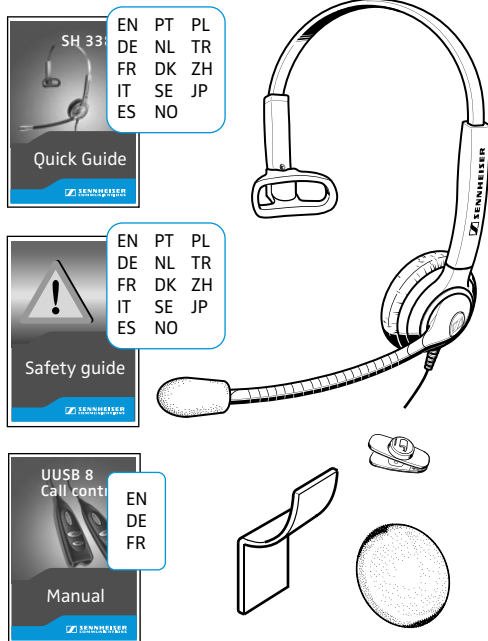


Quick Guide
Kurzanleitung
Guide rapide
Guida rápida

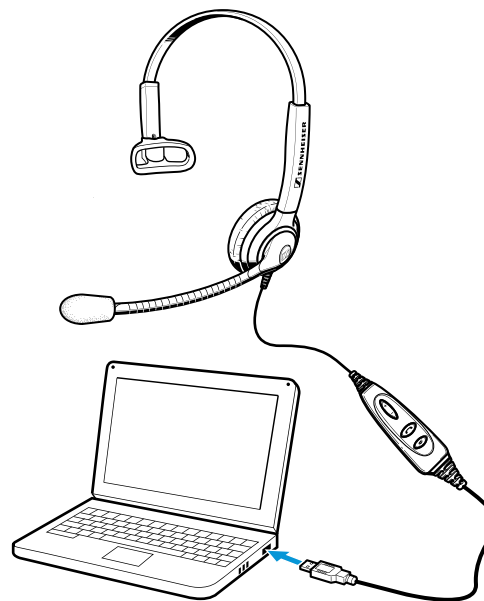
Instrucciones resumidas
Beknopte handleiding
Guida rápido



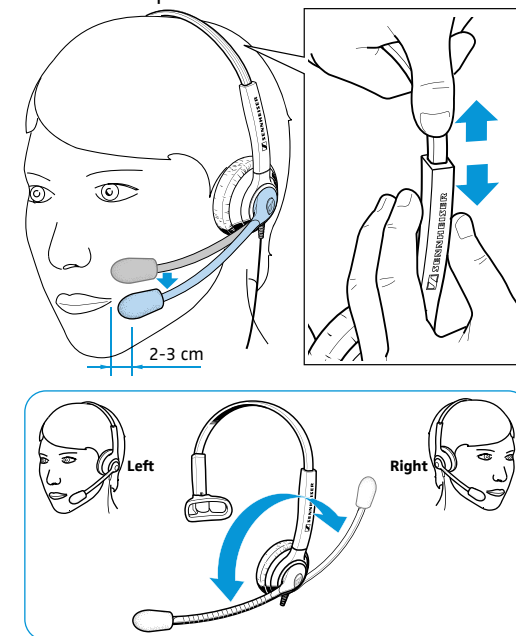
Delivery includes | Lieferumfang | Contenu | Dotazio-
ne | Volumen de suministro | Itens fornecidos |
Leveringsomvang



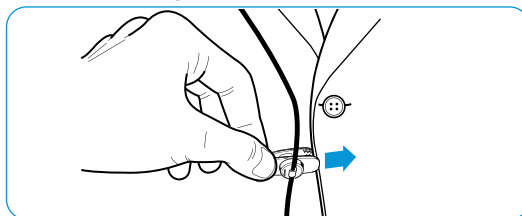
Connecting | Anschlussmöglichkeiten | Possibilités de
raccordement | Possibilità di collegamento | Posibili-
dades de conexión | Ligações possíveis | Aansluit-
mogelijkheden



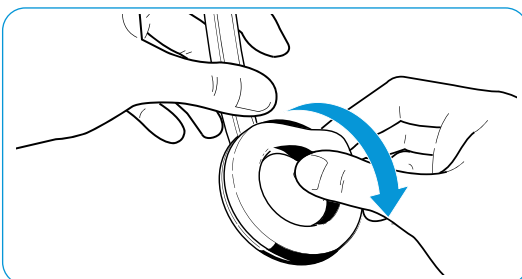
Wearing the headset | Headset aufsetzen | Mettre
le casque téléphonique | Indossare l'headset | Poner-
se los auriculares | Colocar os micro-auscultadores |
De headset opzetten



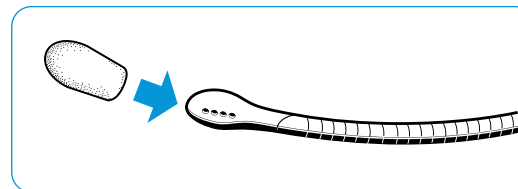
Using the cable clip | Kabel-Clip verwenden | Utiliser
le clip de fixation | Utilizzo della clip per cavo |
Utilizar el clip de cable | Utilizar o grampo para
cabo | Kabelclip gebruiken



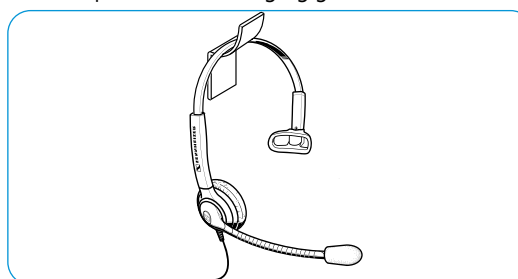
Replacing the earpads | Ohrpolster austauschen |
Remplacer les coussinets d'oreille | Sostituzione dei
cuscinetti auricolari | Cambiar las almohadillas |
Substituir as almofadas | Oorkussens vervangen



Using the popshield | Windschutz verwenden |
Utiliser la bonnette anti-plosives | Utilizzo della
protezione antivento | Uso de la protección contra el
viento | Utilizar a protecção contra vento | Windkap
gebruiken



Using the headset holder | Headsethalter verwen-
den | Utiliser le support de casque téléphonique |
Utilizzo del supporto headset | Utilizar el soporte de
los auriculares | Utilizar o suporte dos microauscul-
tadores | Headsetbevestiging gebruiken



Detailed information | Ausführliche Informationen |
Informations détaillées | Informazioni dettagliate |
Informaciones detalladas | Informações detalhadas |
Uitvoerige informatie



www.senncom.com/support

Accessories | Zubehör | Accessoires | Accessori |
Accesorios | Acessórios | Toebehoren



Call Control Software
www.senncom.com/headsetup

Sennheiser Communications A/S

Langager 6, 2680 Solrød Strand, Denmark
www.senncom.com

Printed in China, Publ. 03/11, A01



SH 338 IP

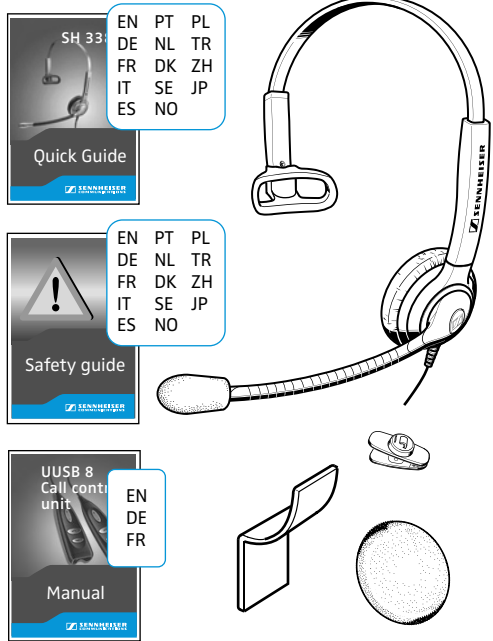


QuickGuide
Snabbguide
QuickGuide
Krótka instrukcja obsługi

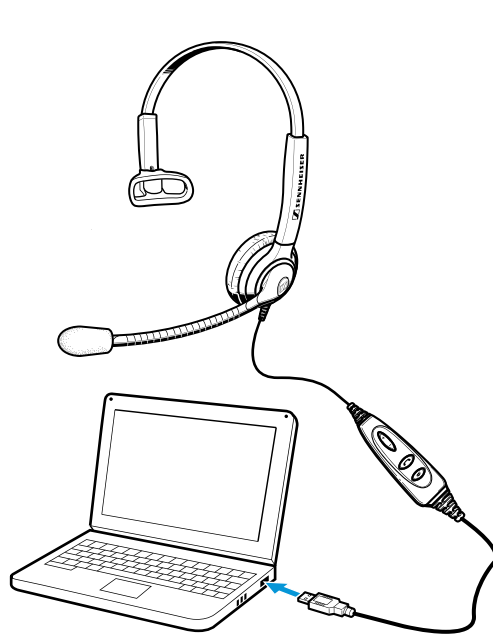
Hızlı Kılavuz
快速指南
クイックガイド



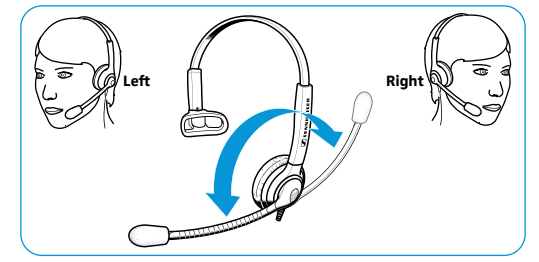
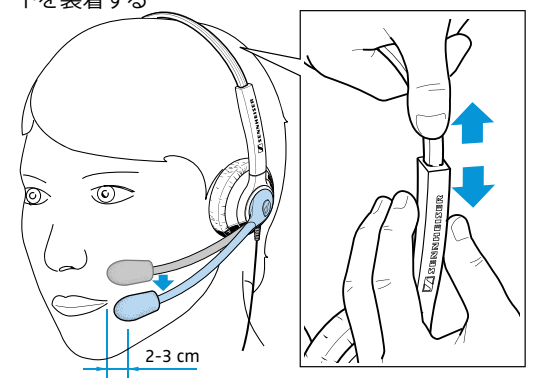
Leveringsomfang | Medföljande delar | Leveransomfang | Zakres dostawy | Teslimat Kapsamı | 供货范围 | 同梱されているもの



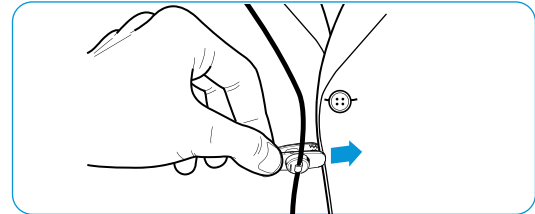
Tiilslutningsmuligheder | Anslutning | Tilkoblingsmuligheder | Dopasowanie haczyków zausznych | Bağlantı olanakları | 连接可能性 | 接続方法



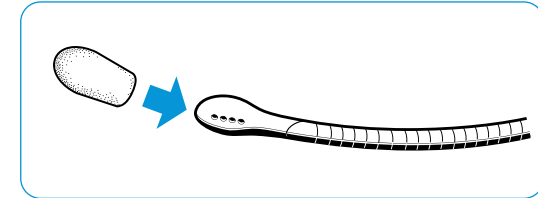
Brug af hovedsæt | Ta på headsetet | Sette på hodesettet | Wkładanie słuchawek dokanałowych do uszu | Kulaklığın takılması | 戴上耳机 | ヘッドセットを装着する



Brug af kabelclips | Använd kabelklämman | Bruk av kabelklips | Wymiana wkładek | Kablo mandalı kullanılması | 使用耳机线夹 | ケーブルクリップを使用する



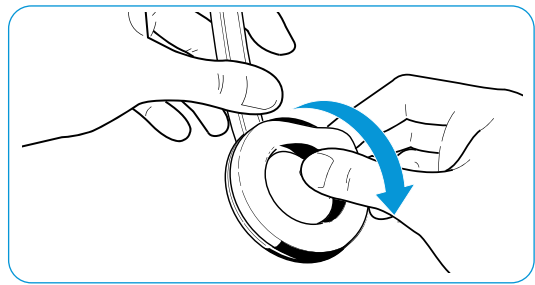
Anvendelse af vindbeskyttelse | Använd vindskydd | Bruk av vindbeskyttelse | Przechowywanie i transport | Rüzgar kalkanı takılması | 使用防风罩 | ポップシールドを使用する



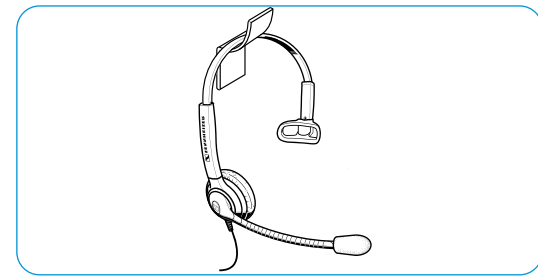
Udførlige informationer | Mer information | Detaljert informasjon | Dane techniczne | Ayrıntılı bilgiler | 详细信息 | 詳細情報



Udskiftning af ørepolstringer | Byt öronkuddar | Utskiftning av øreputer | Czyszczenie | Kulak yastığının değiştirilmesi | 更换耳垫 | イヤーパッドを交換する



Anvendelse af hovedsætholder | Använd headset-hållaren | Bruk av hodesettholder | Szczegółowe informacje | Kulaklık seti tutucusunun kullanılması | 使用耳机座 | ヘッドセットホルダーを使用する



Tilbehør | Tillbehör | Tilbehør | Przetwornik | Akcesuar | 附件 | アクセサリー



Sennheiser Communications A/S
Langager 6, 2680 Solrød Strand, Denmark
www.senncom.com

Printed in China, Publ. 03/11, A01

