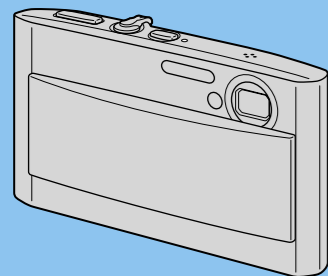


Digital Still Camera

Read This First

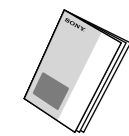
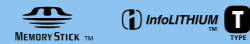
Operating Instructions

Before operating the unit, please read this manual and "User's Guide/Troubleshooting" (separate volume) thoroughly, and retain them for future reference.



DSC-T5

Cyber-shot



Refer to "User's Guide/Troubleshooting" (separate volume)

Explains advanced techniques and what to do if you experience trouble with your camera.

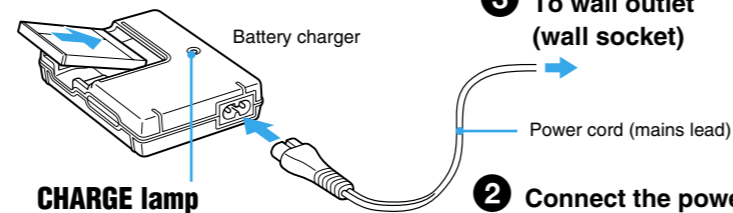
Printed on 100% recycled paper using VOC (Volatile Organic Compound)-free vegetable oil based ink.

© 2005 Sony Corporation Printed in Japan

1 Prepare the battery pack

1 Insert the battery pack.

Push the back part of the battery pack gently until it clicks into place.



CHARGE lamp

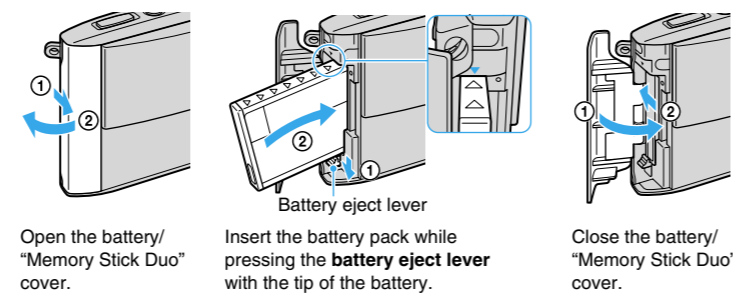
Light on: Charging

Light off: Completed (Practical charge)

If you continue charging the battery pack for about one more hour (until it is fully charged), the charge will last slightly longer.

- Connect the battery charger to an easily accessible wall outlet (wall socket) close by.
- Even if the CHARGE lamp is not lit, the battery charger is not disconnected from the AC power source (mains) as long as it is connected to the wall outlet (wall socket). If some trouble occurs while using the battery charger, immediately shut off the power by disconnecting the plug from the wall outlet (wall socket).
- When charging is finished, disconnect the power cord (mains lead) from the wall outlet (wall socket), and remove the battery pack from the battery charger.
- The time required to fully charge the supplied battery pack from when it is completely discharged at a temperature of 25°C (77°F) is approximately 220 min., and the practical charging time is approximately 160 min. Charging may take longer under certain circumstances or conditions.

4 Insert the charged battery pack.



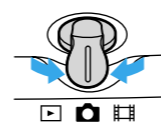
Open the battery/"Memory Stick Duo" cover.

Insert the battery pack while pressing the battery eject lever with the tip of the battery.

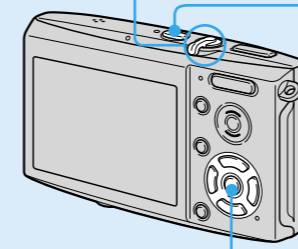
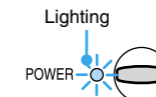
Close the battery/"Memory Stick Duo" cover.

2 Turn the camera on/set the clock

1 Select

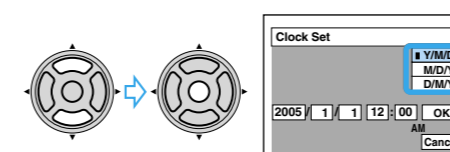


2 Open the lens cover or press the POWER button.

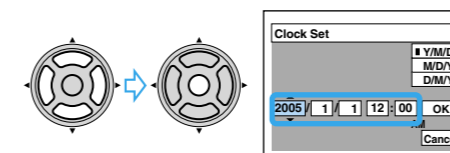


3 Set the clock with the control button.

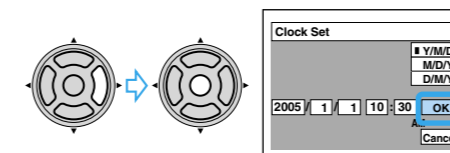
1 Select the date display format with , then press .



2 Select each item with and set the numeric value with , then press .

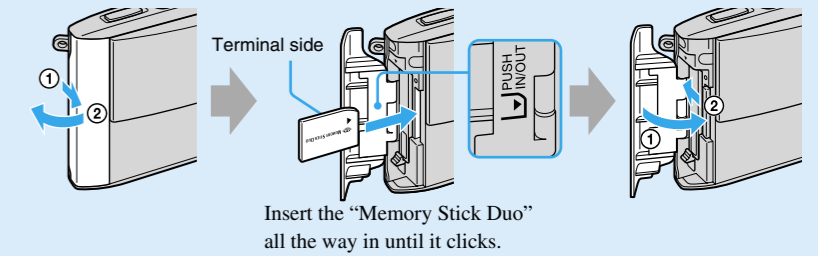


3 Select [OK] with , then press .



• To cancel, select [Cancel] and press .

3 Insert a "Memory Stick Duo" (not supplied)



When there is no "Memory Stick Duo" inserted

The camera records/plays back images using the internal memory (32 MB). → "User's Guide/Troubleshooting" (page 22)

4 Select the image size for use

1 Select a mode.

Still image:

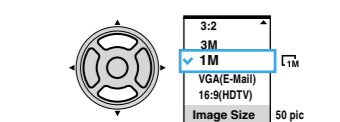


Movie:



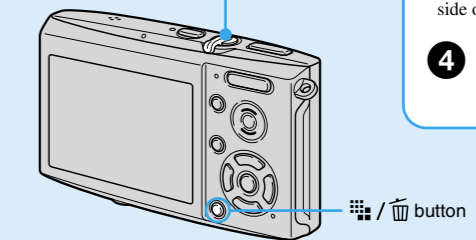
2 Press (Image Size).

3 Select the size with .



- The screen above is for still images.
- For movies, select [640(Fine)] ("Memory Stick PRO Duo" only), [640(Standard)] or [160].
- The recordable number of still images or the recordable time of movies is indicated at the right side of [Image Size].

4 Press (Image Size) to complete the setting.



2635477120

Checking the accessories supplied

- Battery charger BC-CS3 (1)
- USB, A/V, DC IN cable for multi-use terminal (1)
- Power cord (mains lead) (1)
- Wrist strap (1)
- Rechargeable battery pack NP-FT1 (1)/Battery case (1)
- CD-ROM (Cyber-shot application software) (1)
- Operating instructions: "Read This First" (this manual) (1)
- Operating instructions: "User's Guide/Troubleshooting" (1)

A "Memory Stick Duo" is not supplied.

The camera has its own internal memory (32 MB), however, purchase of a "Memory Stick Duo" is recommended for shooting more images.

"Memory Stick Duo": you can use a "Memory Stick Duo" with your camera.

"Memory Stick": you cannot use a "Memory Stick" with your camera.

- Other memory cards cannot be used.
- For details on "Memory Stick Duo" → "User's Guide/Troubleshooting" (page 93)

Notes

- Charge the supplied NP-FT1 battery pack before using the camera for the first time.
- The LCD screen is manufactured using extremely high-precision technology so over 99.99% of the pixels are operational for effective use. However, there may be some tiny black points and/or bright points (white, red, blue or green in color) that constantly appear on the LCD screen. These points are normal in the manufacturing process and do not affect the recording in any way.
- The camera is a precision instrument. Be careful not to bump the lens or the LCD screen, and not to apply force to it. Attach the strap to prevent the camera from damage by being dropped, etc.

Additional information on this product and answers to frequently asked questions can be found at our Customer Support Website.

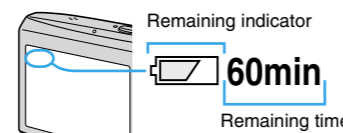
http://www.sony.net/

Using the AC Adaptor

You can connect the camera to a wall outlet (wall socket) using the AC-LS5K AC Adaptor (not supplied). → "User's Guide/Troubleshooting" (page 15). Refer to the operating instructions supplied with the AC Adaptor.

To check the remaining battery time

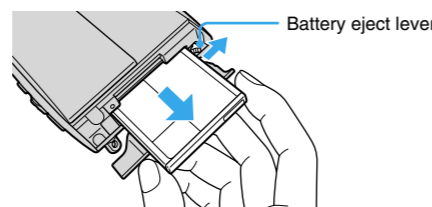
Open the lens cover or press POWER button to turn on and check the time on the LCD screen.



- It takes about one minute until the correct battery remaining time appears.
- The displayed time remaining may not be correct under certain circumstances.

To remove the battery pack

Open the battery/"Memory Stick Duo" cover and slide the battery eject lever in the direction of the arrow. Grasp the edges of the battery pack to pull the battery pack out. To avoid dropping the battery pack, do not hold the camera with the battery slot facing down when the battery eject lever is out.



To use your camera abroad — Power sources

You can use your camera, the supplied battery charger, and the AC-LS5K AC Adaptor (not supplied) in any country or region where the power supply is within 100 V to 240 V AC, 50/60 Hz.

- Do not use an electronic transformer (travel converter), as this may cause a malfunction.

To change the date and time

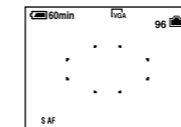
Select [Clock Set] in the (Setup) screen and perform the procedure in step 3 above. → "User's Guide/Troubleshooting" (pages 44 and 54)

On the clock display

- If you selected [D/M/Y] in step 1, set the time on a 24-hour cycle.
- Midnight is indicated as 12:00 AM, and noon as 12:00 PM.

When turning on the power

- Unless you set the clock, the Clock Set screen appears each time the camera is turned on.
- The following screen appears when the camera is turned on for the second time or afterwards.



When opening the lens cover

- If you open the lens cover too quickly, the camera might not turn on. If this happens, close the cover and then open it again more slowly.
- When opening the lens cover, be careful not to touch the lens.
- Open the lens cover until it clicks.

To turn off the power

Close the lens cover or press the POWER button again.

- If the camera is running on battery power and you do not operate the camera for about three minutes, the camera turns off automatically to prevent wearing down the battery pack (Auto power-off function).

Changing the language setting

You can change the screen display to show messages in a specified language. To change the language setting, press MENU to display the menu screen. Select (Setup) with the control button, then, select [A Language] in (Setup1), and select the desired language. → "User's Guide/Troubleshooting" (page 52)

On still image sizes

For details on the image size → "User's Guide/Troubleshooting" (page 12)

The default settings are marked with .

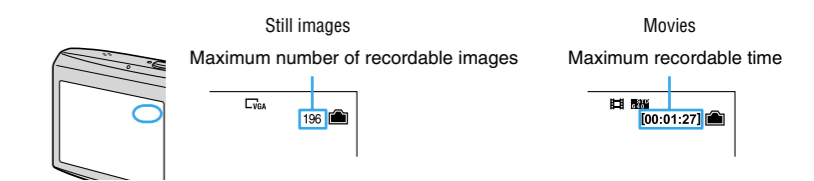
Image size	Guidelines	No. of images	Printing
5M (2592x1944)	For printing in A4 size or high density images in A5 size	Less	Fine
3:2* (2592x1728)		↑ ↓	↑ ↓
3M (2048x1536)			
1M (1280x960)	For printing in postcard size	More	Rough
VGA(E-Mail) (640x480)	For recording a larger number of images for attaching images to e-mail or creating web pages		
16:9(HDTV)** (1920x1080)	For viewing images on a wide TV or Hi-Vision compatible TV***		

\* Images are recorded in the same 3:2 aspect ratio as photograph printing paper or postcards, etc.  
 \*\* Both edges of the image may be cut off when printing → "User's Guide/Troubleshooting" (page 87)  
 \*\*\* You can enjoy even higher picture quality by connecting the camera via a "Memory Stick" slot or a USB connection.

On the recordable number of still images and recordable time of movies

Recordable number of still images and recordable time of movies vary depending on the image size selected.

For details on recordable number or time → "User's Guide/Troubleshooting" (page 21)



- The number of recordable images and time can differ according to shooting conditions.

To remove a "Memory Stick Duo"

Open the battery/"Memory Stick Duo" cover, then push the "Memory Stick Duo" in once.

When the access lamp is lit

Never remove the battery/"Memory Stick Duo" or turn off the power. The data may be corrupted.

# 5 Shoot images easily (Auto adjustment mode)

**Holding the camera**

Position the subject in the center of the focus frame.

**1 Select a mode.**

**Still image (auto adjustment mode):**

Select .

**Movie:**

Select .

**2 Shoot with the shutter button.**

**Still image:**

Press and hold the shutter button halfway down to focus.

AE/AF lock indicator  
Flashing indicator  
→ Indicator lit/beeps

Press the shutter button fully down.  
The shutter sounds.

AF range finder frame

**Movie:**

Press the shutter button fully down.

To stop recording, press the shutter button fully down again.

**Using the control button**

Using the flash for still images

Checking the last image you shot (Quick Review)

Using the self-timer

Shooting close-up (Macro)

**Using the zoom**

Zoom button

- When the zoom scale exceeds 3x, the camera uses the Digital Zoom function. For details on the [Digital Zoom] settings and the image quality → "User's Guide/Troubleshooting" (page 45)
- You cannot change the zoom scale while shooting a movie.

# Shoot still images (Scene Selection)

**1 Select .**

**2 Press MENU.**

**3 Select (Camera) with , then select a mode with .**

- For details on modes, see below.
- The setting is maintained even when the power is turned off.

**4 Press MENU to turn off the menu.**

**5 Shoot with the shutter button.**

**To cancel the Scene Selection**

Select [Auto] or [Program] with .

# 6 View/delete images

**1 Select .**

**2 Select an image with .**

Still image: the image size is displayed  
Movie: is displayed

**Movie:**

To play back a movie, press .

Playback bar

Rewind/Fast forward: (Return to normal playback: )  
Volume:   
Stop playback: .

- Movies with the image size [160] are displayed a size smaller.

**To delete images**

1 Display the image you want to delete and press (Delete).  
2 Select [Delete] with , then press .

**To cancel the deletion**  
Select [Exit], then press .

**Checking the last still image you shot (Quick Review)**

Press on the control button.  
To cancel, press again.

- The image may appear rough right after playback starts.
- To delete the image, press (Delete) and select [Delete] with on the control button, then press .

**Selecting a flash mode for still images**

Before step 2, press (4) on the control button repeatedly until the desired mode is selected.

No indicator	Strobes if it is dark (default setting)
	Forced flash
	Slow synchro (Forced flash) The shutter speed is slow in a dark place to clearly shoot the background that is out of flash light.
	No flash

- Shooting distance (when [ISO] is set to [Auto])  
W side: Approx. 0.1 to 2.5 m (3 15/16 inches to 8 feet 2 7/16 inches)  
T side: Approx. 0.5 to 2.0 m (1 feet 7 11/16 to 6 feet 6 3/4 inches)
- The flash strobes twice. The first time is to adjust the light quantity.

**Shooting close-up (Macro)**

Before step 2, press on the control button.  
To cancel, press again.

- Setting the zoom all the way to the W side is recommended.
- The in-focus range becomes narrow, and the complete subject may not entirely be in focus.
- The Auto Focus speed drops.
- To shoot at even closer distances than close-ups (Macro) recording, use (Magnifying glass mode) in the Scene mode.

**Shortest shooting distance from the lens surface**  
Setting all the way to the W side: Approx. 8 cm (3 1/4 inches)  
Setting all the way to the T side: Approx. 25 cm (9 7/8 inches)

**Using the self-timer**

Before step 2, press on the control button.  
Press the shutter button, the self-timer lamp flashes, and a beep sounds until the shutter operates (approximately 10 seconds later).  
To cancel, press again.

- Using a tripod (not supplied) is recommended.

**If you shoot a still image of a subject that is difficult to focus on**

- If the subject is closer than approx. 50 cm (19 3/4 inches), use the Macro mode (left column).
- When the camera cannot focus on the subject automatically, the AE/AF lock indicator changes to flashing slowly and the beep does not sound. Recompose the shot and focus again.

Subjects difficult to focus on are:

-Distant from the camera and dark	-Reflective light or with a lustrous finish
-The contrast between the subject and its background is poor.	-Flashing
-Seen through glass	-Backlit
-Moving fast	

**To identify items on the screen**  
→ "User's Guide/Troubleshooting" (page 16)

**Scene Selection modes**

The following modes are predetermined to match the scene conditions.

<b>Magnifying glass</b> The subject appears on the LCD screen magnified by up to 3.5x.	<b>Soft snap</b> Shoots portraits of people, flowers, etc., with a gentle atmosphere.
<b>Landscape</b> Shoots landscapes, etc., by focusing on a distant subject.	<b>High-speed shutter</b> Shoots moving subjects outdoors or in other bright places.
<b>Beach</b> Shoots seascides or lakesides, with the blue of the water clearly recorded.	<b>Snow</b> Shoots whitish scenes brightly.
<b>Twilight*</b> Shoots night scenes at a distance without losing the dark atmosphere of the surroundings.	<b>Fireworks*</b> Fireworks are recorded in all their splendor.
<b>Twilight portrait*</b> Shoots portraits in dark places.	
<b>Candle*</b> Shoot candlelit scenes, without spoiling the atmosphere.	

\*The shutter speed becomes slower, so using a tripod is recommended.

**To use the functions set by the control button with Scene Selection**

Before shooting in step 5, select the settings with the control button. Some functions are not available, depending on the Scene Selection mode. When you press the button to select functions that cannot be combined with Scene Selection, a beep sounds. → "User's Guide/Troubleshooting" (page 25)

**To view an enlarged image (playback zoom)**

Press while displaying a still image.  
To undo the zoom, press .

Adjust the portion: /

Cancel playback zoom:

To store enlarged images: [Trimming] → "User's Guide/Troubleshooting" (page 43)

**Viewing an index screen**

Press (Index) and select an image with / .

To return to the single-image screen, press . To display the next (previous) index screen, press .

If you press again, the sixteen-image index screen appears.

**To delete images in index mode**

1 While an index screen is displayed, press (Delete) and select [Select] with on the control button, then press .

2 Select the image you want to delete with / , then press to display the (Delete) indicator on the selected image.

**To cancel a selection**  
Select an image you have previously selected for deletion, then press to delete the indicator from the image.

3 Press (Delete).  
4 Select [OK] with , then press .

- To delete all the images in the folder, select [All In This Folder] with in step 1 instead of [Select], then press .