

Panasonic[®]

Operating Instructions

Clock Radio

Model No. **RC-DC1**

Note:
“EB” on the packaging indicates the United Kingdom.

EB

RQTX1210-1B

Dear Customer

Thank you for purchasing this product.

For optimum performance and safety, please read these instructions thoroughly before connecting, operating or adjusting this product.

Keep this manual for future reference.

CAUTION!

- DO NOT INSTALL OR PLACE THIS UNIT IN A BOOKCASE, BUILT-IN CABINET OR IN ANOTHER CONFINED SPACE. ENSURE THE UNIT IS WELL VENTILATED. TO PREVENT RISK OF ELECTRIC SHOCK OR FIRE HAZARD DUE TO OVERHEATING, ENSURE THAT CURTAINS AND ANY OTHER MATERIALS DO NOT OBSTRUCT THE VENTILATION VENTS.
- DO NOT OBSTRUCT THE UNIT'S VENTILATION OPENINGS WITH NEWSPAPERS, TABLECLOTHS, CURTAINS, AND SIMILAR ITEMS.
- DO NOT PLACE SOURCES OF NAKED FLAMES, SUCH AS LIGHTED CANDLES, ON THE UNIT.
- DISPOSE OF BATTERIES IN AN ENVIRONMENTALLY FRIENDLY MANNER.

THIS UNIT IS INTENDED FOR USE IN MODERATE CLIMATES.

WARNING:

TO REDUCE THE RISK OF FIRE, ELECTRIC SHOCK OR PRODUCT DAMAGE,

- DO NOT EXPOSE THIS APPARATUS TO RAIN, MOISTURE, DRIPPING OR SPLASHING AND THAT NO OBJECTS FILLED WITH LIQUIDS, SUCH AS VASES, SHALL BE PLACED ON THE APPARATUS.
- USE ONLY THE RECOMMENDED ACCESSORIES.
- DO NOT REMOVE THE COVER (OR BACK); THERE ARE NO USER SERVICEABLE PARTS INSIDE. REFER SERVICING TO QUALIFIED SERVICE PERSONNEL.

The socket outlet shall be installed near the equipment and easily accessible.

The mains plug of the power supply cord shall remain readily operable.

To completely disconnect this apparatus from the AC Mains, disconnect the power supply cord plug from AC receptacle.

This product may receive radio interference caused by mobile telephones during use. If such interference is apparent, please increase separation between the product and the mobile telephone.

Product identification marking

Product	Location
Main unit	Bottom
AC adaptor	Bottom

■ Sales and Support Information

Customer Care Centre

- For customers within the UK:
0844 844 3852
- For customers within the Republic of Ireland: 01 289 8333
- Visit our website for product information
www.panasonic.co.uk
- E-mail: customer.care@panasonic.co.uk

Direct Sales at Panasonic UK

- For customers: 0844 844 3856
- Order accessory and consumable items for your product with ease and confidence by phoning our Customer Care Centre Monday-Thursday 9:00am-5:30pm, Friday 9:30am-5:30pm (Excluding public holidays).
- Or go on line through our Internet Accessory ordering application at www.pas-europe.com.
- Most major credit and debit cards accepted.
- All enquiries transactions and distribution facilities are provided directly by Panasonic UK Ltd.
- It couldn't be simpler!
- Also available through our Internet is direct shopping for a wide range of finished products, take a browse on our website for further details.

Information for Users on Collection and Disposal of Old Equipment and used Batteries



These symbols on the products, packaging, and/or accompanying documents mean that used electrical and electronic products and batteries should not be mixed with general household waste.

For proper treatment, recovery and recycling of old products and used batteries, please take them to applicable collection points, in accordance with your national legislation and the Directives 2002/96/EC and 2006/66/EC.

By disposing of these products and batteries correctly, you will help to save valuable resources and prevent any potential negative effects on human health and the environment which could otherwise arise from inappropriate waste handling.

For more information about collection and recycling of old products and batteries, please contact your local municipality, your waste disposal service or the point of sale where you purchased the items.

Penalties may be applicable for incorrect disposal of this waste, in accordance with national legislation.



For business users in the European Union

If you wish to discard electrical and electronic equipment, please contact your dealer or supplier for further information.

[Information on Disposal in other Countries outside the European Union]

These symbols are only valid in the European Union. If you wish to discard these items, please contact your local authorities or dealer and ask for the correct method of disposal.



Note for the battery symbol (bottom two symbol examples):

This symbol might be used in combination with a chemical symbol. In this case it complies with the requirement set by the Directive for the chemical involved.

Safety precautions

Placement

Set the unit up on an even surface away from direct sunlight, high temperatures, high humidity, and excessive vibration. These conditions can damage the cabinet and other components, thereby shortening the unit's service life.

Place it at least 15 cm away from wall surfaces to avoid distortion and unwanted acoustical effects.

Do not place heavy items on the unit.

Voltage

Do not use high voltage power sources. This can overload the unit and cause a fire.

Do not use a DC power source. Check the source carefully when setting the unit up on a ship or other places where DC is used.

AC adaptor protection

Ensure the AC adaptor is connected correctly and not damaged. Poor connection and lead damage can cause fire or electric shock. Do not pull, bend, or place heavy items on the lead.

Grasp the plug firmly when unplugging the adaptor. Pulling the AC adaptor can cause electric shock.

Do not handle the plug with wet hands. This can cause electric shock.

Foreign matter

Do not let metal objects fall inside the unit. This can cause electric shock or malfunction.

Do not let liquids get into the unit. This can cause electric shock or malfunction. If this occurs, immediately disconnect the unit from the power supply and contact your dealer.

Do not spray insecticides onto or into the unit. They contain flammable gases which can ignite if sprayed into the unit.

Service

Do not attempt to repair this unit by yourself. If sound is interrupted, indicators fail to light, smoke appears, or any other problem that is not covered in these instructions occurs, disconnect the AC adaptor and contact your dealer or an authorised service centre. Electric shock or damage to the unit can occur if the unit is repaired, disassembled or reconstructed by unqualified persons.

Extend operating life by disconnecting the unit from the power source if it is not to be used for a long time.

Table of contents

Safety precautions	5
Supplied accessories.....	6
Compatible iPod and iPhone	7
Overview of controls	8
Making the connections.....	10
Setting the clock.....	10
Using an iPod or iPhone	11
Using the radio	12
Using the sleep timer	13
Using the alarm.....	13
Using the Memory Loader application	15
Memory back-up battery	16
Troubleshooting guide	17
Maintenance.....	18
Specifications	19

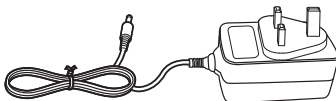
Supplied accessories



Please check and identify the supplied accessories.



1 AC adaptor



(RFEAX1008)

Made for



iPod



iPhone

“Made for iPod” and “Made for iPhone” mean that an electronic accessory has been designed to connect specifically to iPod, or iPhone, respectively, and has been certified by the developer to meet Apple performance standards.

Apple is not responsible for the operation of this device or its compliance with safety and regulatory standards.

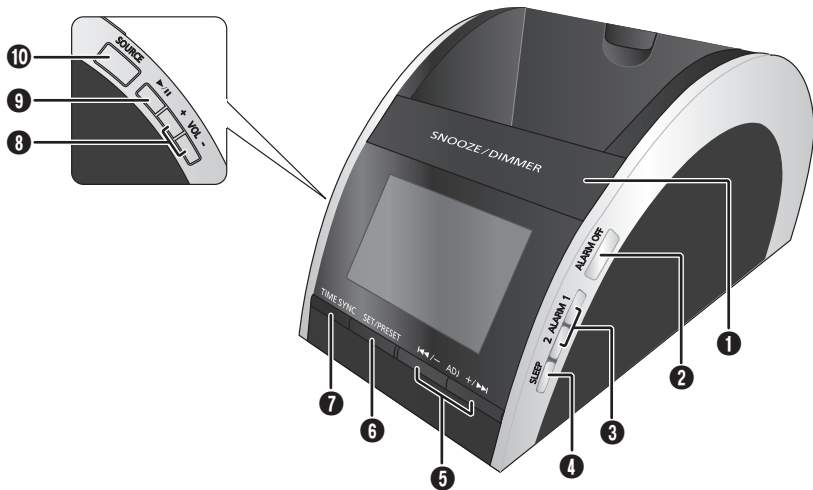
iPhone, iPod, iPod classic, iPod nano, and iPod touch are trademarks of Apple Inc., registered in the U.S. and other countries.

Compatible iPod and iPhone

- iPod nano 5th generation (video camera) (8GB, 16GB)
- iPod touch 2nd generation (8GB, 16GB, 32GB, 64GB)
- iPod classic [120GB, 160GB (2009)]
- iPod nano 4th generation (video) (8GB, 16GB)
- iPod classic (160GB) (2007)
- iPod touch 1st generation (8GB, 16GB, 32GB)
- iPod nano 3rd generation (video) (4GB, 8GB)
- iPod classic (80GB)
- iPod nano 2nd generation (aluminum) (2GB, 4GB, 8GB)
- iPod 5th generation (video) (60GB, 80GB)
- iPod 5th generation (video) (30GB)
- iPod nano 1st generation (1GB, 2GB, 4GB)
- iPod 4th generation (colour display) (40GB, 60GB)
- iPod 4th generation (colour display) (20GB, 30GB)
- iPod 4th generation (40GB)
- iPod 4th generation (20GB)
- iPod mini (4GB, 6GB)
- iPhone 3GS (16GB, 32GB)
- iPhone 3G (8GB, 16GB)
- iPhone (4GB, 8GB, 16GB)

Compatibility depends on the software version of your iPod or iPhone.

Overview of controls



1 [SNOOZE/DIMMER]

Snooze: To stop the alarm for 9 minutes.
Dimmer: To adjust the display panel's brightness (High (default), Medium or Low).

2 [ALARM OFF]

To turn off the alarm.

3 [ALARM 1], [ALARM 2]

To activate either alarm 1 or alarm 2 function.
To display alarm 1 or alarm 2 setting.

4 [SLEEP]

To activate sleep function.
To activate daylight saving time (summer time) in clock mode.

5 [◀◀/–, ADJ], [+/▶▶, ADJ]

To adjust clock, radio and alarm settings.
To skip to previous or next track.
To backward or forward search through a track.

6 [SET/PRESET]

To set the clock.
To perform automatic presetting or to view preset channels in radio mode.

7 [TIME SYNC]

To synchronise the main unit with an iPod or iPhone's time.

8 [+ , VOL], [– , VOL]

To adjust the volume.
To select a 12-hour or 24-hour clock display.

9 [▶/||]

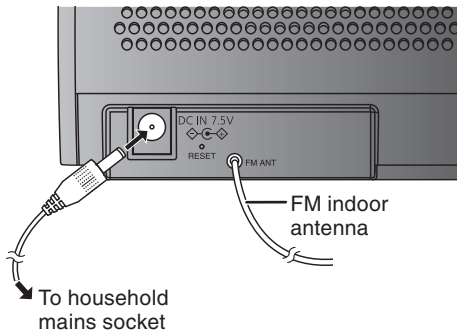
To start music playback from an iPod or iPhone and to pause during playback.

10 [SOURCE]

To select clock, "IPOD" or "RADIO FM" mode.

Making the connections

Rear view



Connect the AC adaptor.

- Do not use an AC adaptor from other equipment.
- Do not use any other AC adaptors except the supplied one.
- The unit is in the standby condition when the AC adaptor is connected. The primary circuit is always “live” as long as the AC adaptor is connected to an electrical outlet.

Setting the clock

The clock is displayed once the main unit is connected to the household mains socket.

Reset the clock regularly to maintain accuracy (monthly accuracy ± 60 seconds).

- 1** Press and hold [SET/PRESET] for 2 seconds.
- 2** Press [◀◀/-, ADJ] or [▶▶/+, ADJ] to select the day.
- 3** Press [SET/PRESET] again to confirm.
- 4** Repeat steps 2 and 3 to set the hour and minute.

Example:



To change the clock display

In clock mode, press and hold [+ , VOL] and [- , VOL] at the same time for 2 seconds to select between a 12-hour or 24-hour display.

For 12-hour display:

AM : “PM” is not displayed.

PM : “PM” is displayed.

Daylight saving time (summer time)

In clock mode, press and hold [SLEEP] to activate or cancel daylight saving time (summer time) function.

“DST” is displayed when the function is activated.

Synchronising clock with iPod or iPhone time

This function allows you to set the clock's time to be the same time as your iPod or iPhone's time (➔ page 7, “Compatible iPod or iPhone”).

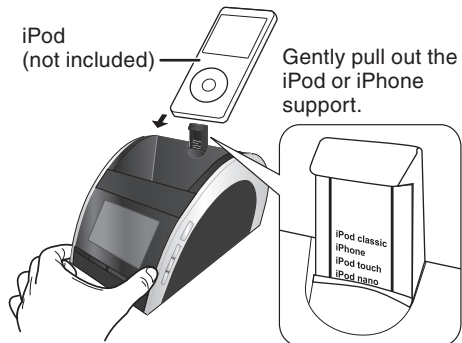
Press [TIME SYNC] while an iPod or iPhone is docked unto the main unit.

Note:

- Exact synchronisation of an iPod or iPhone with the main unit is not possible. There could be a difference of up to 59 seconds between them.
- Compatibility depends on the software version of your iPod or iPhone.

Using an iPod or iPhone

- 1 Pull out the iPod or iPhone support.**
Adjust the support according to the height of your iPod or iPhone.



- 2 Connecting an iPod or iPhone.**
Hold the main unit when connecting or disconnecting the iPod or iPhone.

Note:

When docking an iPod touch or iPhone for the first time, a message will be displayed on your iPod touch or iPhone if the Memory Loader application has not been installed (➔ page 15).

Charging an iPod or iPhone

The iPod or iPhone charges automatically when connected to the main unit.

- See iPod or iPhone display to check its charging status.
- If the iPod or iPhone is not being used for an extended period of time after charging has completed, disconnect it from the main unit, as the battery will be depleted naturally. (Once fully charged, additional charging will not occur.)

Playing an iPod or iPhone

- 1 Place an iPod or iPhone in the dock and turn it on.**
- 2 Press [SOURCE] to select "IPOD".**
- 3 Press [▶/||] once to start music playback from the iPod or iPhone. Press again to pause playback.**
- 4 Press [◀/–, ADJ] or [+/▶▶], ADJ] to skip to the previous or next track.**
- 5 Press and hold [◀/–, ADJ] or [+/▶▶], ADJ] to backward or forward search through a track.**

Note:

- If the iPod or iPhone automatically shuffles or skip a track;
 - Turn off its "Shake" feature (if there is any).
 - Play the iPod or iPhone using an iPod or iPhone dock adaptor (not included).
- For iPod or iPhone operation details, refer to iPod or iPhone's User Guide.

Using the radio

Manual tuning

- 1 Press [SOURCE] to select "RADIO FM".**
- 2 Press [◀/–, ADJ] or [+/▶▶], ADJ] to select the desired frequency.**

To tune automatically

Press and hold [◀/–, ADJ] or [+/▶▶], ADJ] until the frequency starts changing rapidly. Automatic tuning stops when it finds a station or when [◀/–, ADJ] or [+/▶▶], ADJ] is pressed again.

Note:

For better reception, extend and change the direction of the FM antenna.

Memory preset

You may store your favourite channels in 5 FM preset channels.

Preparation

Press [SOURCE] to select "RADIO FM".

Automatic presetting (AP)

Press and hold [SOURCE] until "AP" is displayed.

Note:

- Automatic presetting begins from the current frequency.
- Only the first 5 stations detected will be stored.
- "AP" will blink continuously until all 5 channels have been set.

Manual presetting

- 1 Press [\lll /-, ADJ] or [+/ \ggg], ADJ] to select the desired frequency.
- 2 Press and hold [SET/PRESET] for 2 seconds to display the preset number.
- 3 Press [\lll /-, ADJ] or [+/ \ggg], ADJ] to select a preset number.
- 4 Press [SET/PRESET] again to confirm.

Tuning in to a preset channel

Press [SET/PRESET] to switch between preset channels.

Using the sleep timer

This function enables you to turn off the unit automatically after the set time (only in iPod and radio mode).

- 1 Press [SLEEP] to activate the timer.
- 2 Press [SLEEP] again to select your desired time (in minutes).
OFF (default) \rightarrow 30 \rightarrow 60 \rightarrow 90 \rightarrow 120

Note:

Press [SLEEP] once to check the remaining time.

Using the alarm

You can set two different alarm times. Before setting the alarm, make sure to set the clock (\rightarrow page 10, "Setting the clock").

Setting the alarm

- 1 Press and hold [ALARM 1] or [ALARM 2] until the hour display blinks.
- 2 Within 10 seconds, press [\lll /-, ADJ] or [+/ \ggg], ADJ] to set the hour.
- 3 Press [ALARM 1] or [ALARM 2] to confirm.
- 4 Repeat steps 2 and 3 to set the minutes.
- 5 Press [\lll /-, ADJ] or [+/ \ggg], ADJ] to select the days of the week:
MON-SUN (everyday) \rightarrow MON-FRI (weekdays)

SAT-SUN (weekend)
- 6 Press [ALARM 1] or [ALARM 2] to confirm.
- 7 Press [\lll /-, ADJ] or [+/ \ggg], ADJ] to select the desired alarm mode: "IPOD", "RADIO" or "BUZZER".

(Continued on next page) **13**

- 8** Press [ALARM 1] or [ALARM 2] to confirm.
“IPOD” selection: Continue with steps 9 and 10.
“RADIO” selection: Continue from steps 11 to 14.

Setting iPod alarm

- 9** Press [◀◀/–, ADJ] or [+/▶▶, ADJ] to adjust the volume level.
- 10** Press [ALARM 1] or [ALARM 2] to confirm the setting.

Note:

- The buzzer will sound if no iPod or iPhone is detected at the set alarm time.
- Music will be played from the iPod or iPhone's library when the alarm sounds.

Setting radio alarm

- 11** Press [◀◀/–, ADJ] or [+/▶▶, ADJ] to adjust the volume level.
- 12** Press [ALARM 1] or [ALARM 2] to confirm.
- 13** Press [◀◀/–, ADJ] or [+/▶▶, ADJ] to select the desired preset channel.
- 14** Press [ALARM 1] or [ALARM 2] to confirm the setting.

Note:

- Alarm will function only when powered by AC power.
- To activate or display the alarm setting, press [ALARM 1] or [ALARM 2] once.
- Press [ALARM 1] or [ALARM 2] again to deactivate the alarm function.

Turning off the alarm

Press [ALARM OFF] to turn off the alarm.

The alarm will sound at the same time on the next day.

Note:

If the alarm is not turned off, it will sound continuously for 59 minutes before turning off by itself.

Snoozing the alarm

Press [SNOOZE] when the alarm sounds to stop it for a few minutes.

The alarm will sound again after 9 minutes.

Tip:

For iPod touch and iPhone users, use the Memory Loader application to unlock custom alarm settings (➔ page 15).

Using the Memory Loader application

This main unit is designed to operate with the Memory Loader application which can be downloaded from the App Store (search for MemoryLoader).

If you have not already downloaded the free Memory Loader application, you will see the following message on your iPod touch or iPhone display:

Application Not Installed

This accessory requires an application you do not have installed. Would you like to install it from the App store?

This message is a reminder for you to download the application in order to enjoy the enhanced features of this main unit. However, your iPod touch and iPhone will work properly with this main unit even without the Memory Loader application installed.

The Memory Loader application only works with iPod touch and iPhone running on OS 3.0 or later.

Once the Memory Loader application is installed into your iPod touch or iPhone, the following functions can be easily accessible and controlled directly through the application's platform.

Alarm

- Adjust alarm 1 and alarm 2 settings easily.
- You may select any combination of days for the alarm to sound.
- You can choose your desired snooze settings from a choice of 1 to 30 minutes.

Radio

- Preset 5 FM channels by scrolling through your desired frequencies by using the picker.

Events

- You can be alerted of dates stored on your iPod touch or iPhone contacts (if the alarm is set to sound on that day).

Nap

- You can set a short nap timer or countdown on your iPod touch or iPhone.

Daylight saving time (DST)

- Activate or deactivate the daylight saving time function with one simple step.

For more information, visit:
www.memoryloader.com

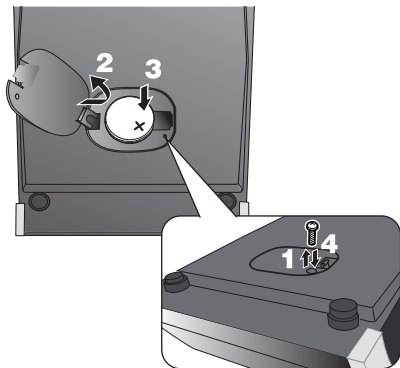
Memory back-up battery

The back-up battery (CR2032, not included) saves the clock and alarm settings in the event of a power interruption.

Inserting the battery

When there is no battery, the battery-weak indicator will be displayed until a battery is inserted.

Bottom view



- 1** Keep the AC adaptor connected to the household mains socket when unscrewing the screw on the cover of the battery holder using a screwdriver.
- 2** Open the cover of the battery holder.
- 3** Insert a new battery with the (+) side facing up.
- 4** Close the cover of the battery holder and secure it with the screw.

Replacing the battery

The service life of this battery is approximately 1 month.

When the battery is weak, the battery-weak indicator will blink constantly on the display.

Note:

- Do not heat or expose to flame.
- Do not leave the battery(ies) in an automobile exposed to direct sunlight for a long period of time with doors and windows closed.
- Remove the battery if the clock radio is not going to be used for a long period of time. Store in a cool, dark place.

CAUTION

Danger of explosion if battery is incorrectly replaced. Replace only with the same or equivalent type recommended by the manufacturer. Dispose of used batteries according to the manufacturer's instructions.

Warning

Keep the Button-Type battery out of the reach of children. Never put Button-Type battery in mouth. If swallowed call your doctor.

Warning

Risk of fire, explosion and burns. Do not recharge, disassemble, heat above 60°C or incinerate.

Troubleshooting guide

Before requesting service, make the following checks. If you are in doubt about some of the check points, or if the solutions indicated do not solve the problem, consult your dealer for instructions.

■ Clock

Clock cannot be synchronised to iPod or iPhone's time.

- Make sure the iPod or iPhone is securely connected and turned on (➔ page 11).
- Update your iPod or iPhone with the latest software.

Daylight saving time does not work.

- Make sure the clock has been set correctly.
- Press and hold [SLEEP] in clock mode to activate daylight saving time (➔ page 11).

■ Alarm

The iPod, radio or buzzer alarm does not sound at the preset time.

- Check that "ALARM 1" or "ALARM 2" has been correctly activated (➔ page 13).

The iPod or radio alarm is activated but there is no sound at the preset time.

- Check the alarm's volume setting (➔ page 14).

■ iPod or iPhone

The iPod or iPhone cannot be operated with this unit.

- Make sure the iPod or iPhone has been securely connected and turned on (➔ page 11).
- Update your iPod or iPhone with the latest software.

There is no sound from the iPod or iPhone.

- Make sure the iPod or iPhone has been securely connected (➔ page 11).
- Adjust the volume.

The iPod or iPhone does not charge.

- Check the connections. Turn off and remove the iPod or iPhone from the dock connector. Reinsert and turn it on again (➔ page 11).

■ Radio

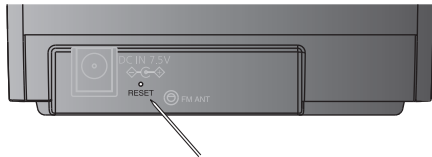
A noise or sound distortion is heard.

- Distance the unit away from any television, personal computer or device easily influenced by magnetism.

Reset

This function enables you to restore the main unit to the original factory settings or when it is behaving abnormally.

Rear view



Press [RESET] with a paper clip or a pointed object.

Maintenance

To clean this unit, wipe with a soft, dry cloth.

- Never use alcohol, paint thinner or benzine to clean this unit.
- Before using chemically treated cloth, read the instructions that came with the cloth carefully.

Specifications

AMPLIFIER SECTION

RMS Output Power (Mono)

Front channel

2.6 W per channel (8 Ω), 1 kHz, 10% THD

TUNER SECTION

Preset memory

FM 5 stations

Frequency modulation (FM)

Frequency range

87.50 MHz to 108.00 MHz (50 kHz step)

Antenna terminals

75 Ω (unbalanced)

SPEAKER SECTION

Type 1 way, 1 speaker system (Bass reflex)

Speaker unit(s)

Impedance 8 Ω

Full range

2.5 cm cone type

GENERAL

Power supply (AC adaptor)

AC 100 to 240 V, 50/60 Hz

DC Output

7.5 V

Power consumption

(with iPod or iPhone charging)

Main unit

7 W

Dimensions (W x H x D)

112 mm x 80 mm x 150 mm

Mass

Main unit

0.37 kg

AC adaptor

0.14 kg

Operating temperature range

0°C to +35°C

Operating humidity range

20% to 80% RH (no condensation)

Power consumption in standby mode:

Main unit

0.3 W (approximate)

AC adaptor

0.3 W (approximate)

Note:

- 1) Specifications are subject to change without notice.
Mass and dimensions are approximate.
- 2) Total harmonic distortion is measured by the digital spectrum analyser.

Panasonic Corporation
Web Site: <http://panasonic.net>

En

Pursuant to at the directive 2004/108/EC, article 9 (2)
Panasonic Testing Centre
Panasonic Marketing Europe GmbH
Winsbergring 15, 22525 Hamburg, Germany

RQTX1210-1B
L0610HH1060