
EPSON TM-T88V

KIND TO YOUR POCKET AND THE ENVIRONMENT



EPSON[®]
EXCEED YOUR VISION

FIFTH GENERATION EPSON HIGH-TECH

Do you want a PoS receipt printer that sets new standards for environmental compatibility, quality, reliability and total cost of ownership? Then the TM-T88V is your first choice. The Epson TM-T88 series thermal printers have in the past already set standards for a whole industry, with already over five million systems installed. Now with the TM-T88V, Epson launches its latest flagship. The printer benefits from proven predecessor technologies. With many new technical features, this is the most cost-efficient, long-lasting and eco-friendly PoS thermal printer ever developed by Epson.

Benchmark - Innovation

As one of the leading suppliers of products and solutions in the print and digital imaging sectors, Epson is well-known for its dynamic record of innovations. With its TM-T88V thermal printer, the Japanese technology corporation sets a new milestone. Whether it's grey scale print, the ENERGY STAR® certificate or the long life of its mechanical and electronic components, the Epson TM-T88V is miles ahead in technology and ingenious detail – impressive!

Benchmark - Total cost of ownership

Behind the technical perfection of the TM-T88V lie many years of business experience, with over five million printer installations and a systematic process of improvement spanning five generations. Significant key performance indicators – system availability (MCBF), cutting capacity and print head capacity for example – bear witness to the very low total cost of ownership of the thermal printer. Its high degree of reliability guarantees your productivity at the point of sale.

Benchmark - Economy

Cost efficiency is one of the key features of the TM-T88V, a very important commercial consideration in these times of cost constraints and tight margins. Whatever the operational mode, energy consumption is ultra low, there are many ways to cut down on paper usage, and it has a durable, robust, cost-cutting design – all ideal for the environment.



NEW BENCHMARK FOR PoS THERMAL PRINTERS



Benchmark - Sustainability

Under its sustainability initiative, Epson is committed to maintaining high ethical and ecological standards. The 'Epson Sustainability Report', published annually, records how Epson safeguards and continuously improves the environmental credentials of its products and manufacturing processes. The company is sustainable, too, in its ethical relations with customers, business partners and workforce.

Benchmark – Environmental protection

Since 2000, Epson has been recording the environmental impact of some of the items in its production range. Life cycle assessments (LCA) reveal the consumption, in terms of raw materials and energy, occasioned by a product during production, use and disposal and the associated emissions. Thanks to ground-breaking improvement measures, Epson has significantly improved the CO₂ account of the printer. The printer's extremely long life is not the least of the factors with a positive effect on its LCA.



YOUR CONTROLLER WILL PAT YOU ON THE BACK

With the TM-T88V, you get the most economic, cost-efficient and low-resource use thermal printer ever designed by Epson. Its total cost of ownership has never been so low. Thanks to its special construction method, it noticeably reduces system downtimes and so saves you servicing costs.

Very high system availability

Component design improvements have enabled Epson to make significant advances with key technical performance indicators. The integrated paper cutter's performance rating has now stepped up by 33 % to the two million cut level. The mean number of work cycles between two failures (MCBF) is now up by 35 % on the predecessor model to 70 million lines. The print head now has a 50 % greater capacity than that of its predecessor. The long warranty period (doubled from two to four years) is impressive testimony of these improvements.

➔ This slashes your total cost of ownership to a really low level.

Robust, durable design

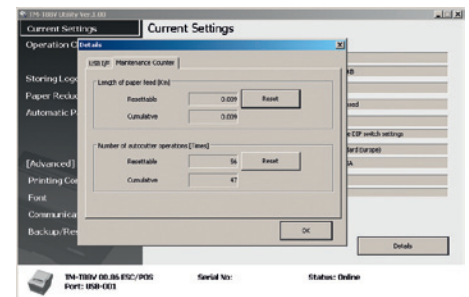
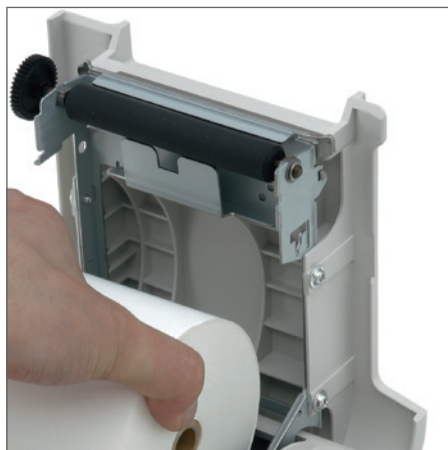
The printer case lid, always subject to extreme mechanical stresses, now has metal hinges to minimise wear. The paper feed mechanism is redesigned providing reliable protection against till receipt wastage. If an obstacle blocks the paper feed, the receipt may get twisted, but the cut will usually still be right on exit. Use the TM-T88V in your catering area. You'll still benefit as before from the electronic components' good level of encapsulation. And even when the appliance is open, small splashes won't cause any major damage.

➔ Protection against loss of sales through cash till breakdowns.

Transparency through remote maintenance

Too short maintenance cycles waste money. Too long maintenance cycles can cause system damage and high consequential costs. Remote maintenance helps you monitor the operation of your TM-T88V around the clock. Knowledge of the line feed, cut numbers and operating times enables you to plan the maintenance programme for each printer precisely and even carry it out online if necessary. This guarantees efficient printer maintenance.

➔ Increases the productivity and cost-efficiency of your maintenance programme.



The remote maintenance software enables you to read paper consumption figures or cut numbers, for example.

THE ENVIRONMENT WILL THANK YOU

Your new till receipt printer, an ecological star setting new standards. Choose the TM-T88V and score twice – protecting both the environment and the climate.

Environmental protection from a high-tech solution

Throughout, from production to delivery, Epson focuses on careful use of resources and continuous emission reduction. All the processes and materials deployed in the manufacture of the TM-T88V are at the cutting edge of technology. Transportation, packaging, use and recycling are all designed to have the lowest possible environmental impact. The TM-T88V releases 10% less CO₂ than its predecessor and so has the best CO₂ life cycle assessment of any Epson thermal printer so far.

➔ **Epson makes an active contribution to protecting the environment and the climate.**

Very low energy consumption



As the world's very first thermal PoS receipt printer, the Epson TM-T88V has been awarded the ENERGY STAR® certificate for power-saving office equipment because its energy consumption is extremely low whatever the operating mode. In standby mode it consumes less than 1 watt. Overall, Epson has managed to cut electricity consumption by 14%. The ENERGY STAR® certificate is a first for the PoS industry, a fact of which Epson is especially proud.

➔ **Reduces your energy costs and protects the environment.**

Thrifty with paper

The new fully automatic paper reducing function gives you the opportunity to reduce the line spacing on each receipt without altering the content. Also, the TM-T88V prints the logo on the next receipt before cutting the one before it. This saves you up to 12 mm more paper per receipt. Overall, these new functions give you paper savings of up to 30%, depending on the length of the receipt. The printer comes with an adapter so you can also reconfigure it to print on narrower paper (58 mm).

➔ **Reduces your costs on consumables and protects the environment.**



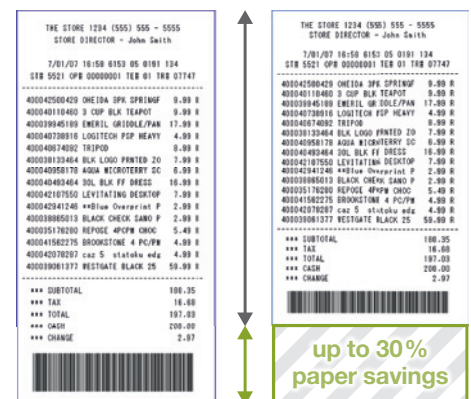
Eco Features

- Generates 10% fewer life cycle CO₂ emissions than the previous model (TM-T88IV) and uses 14% less total power.*¹
- Saves up to approx. 30% of paper supply with paper-saving functions.*²
- ENERGY STAR® qualified.



*¹ Calculated under Epson's test conditions. A life cycle assessment was used to calculate the global warming impact of the product at each phase of its life cycle and express this as a CO₂ equivalent. The life cycle includes material & product manufacturing, transport, use by customer (assumed 5-year usage), and disposal/recycling of end-of-life products, but not paper used. Total power consumption is calculated based on 300 receipts per day, with printer power on for 16 hours/day and off for 8 hours/day for 365 days/years. CO₂ emissions and power consumption will differ depending on customer printer use.

*² Top margin, line space, line feed and barcode height reduction functions.



Till receipt **without** paper reducing function

Till receipt **with** paper reducing function

YOUR MARKETING MANAGER WILL BE OVER THE MOON

In the future, use your till receipts even more efficiently as a means of communication with your customers. As one of the world's first PoS thermal printers, the Epson TM-T88V gives you grey scale print for greater contrast. Whether it's an individual check out coupon, loyalty voucher to collect or publicity for special offers, publicity on the till receipt is a highly efficient marketing tool.

A first for grey scale print

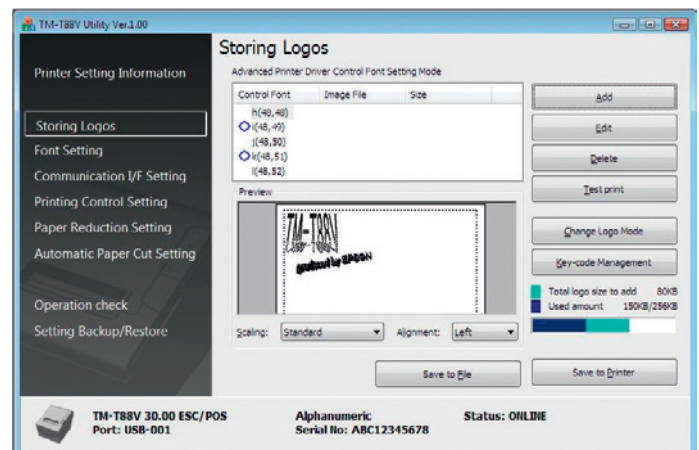
A thermal PoS printer that can print grey scale? The Epson TM-T88V is the first to give you this function – a valuable application for commercial marketing – as standard. Add value to your till receipts immediately with graphics, images and logos that display fine colour shading and much of the charm of black-and-white photos.

➔ Turn your receipts into low-cost but dynamic publicity tools.

Software makes it easy to design your receipts

The Epson TM-T88V comes with software that is intuitive to use and makes child's play of designing receipt lay outs. Logos, graphics or bitmaps all within your grasp with the self-explanatory software. Format fonts and graphic objects just as you like. Once you've saved your print image, it will appear on every printed receipt. You can even use the software to configure the paper saving function.

➔ The visual design of your receipts made easy.



YOUR COMPETITORS WON'T BELIEVE THEIR EYES

You have already installed Epson TM-T88 thermal printers and are planning to switch to the next generation? Epson makes it easier to introduce the TM-T88V than any new printer before.

Perfect integration into all systems

The new till receipt flagship is compatible with the TM-T88III and IV versions. The dimensions of the case are no bigger than those of its predecessor despite the many new functions. Whether you have Windows®, Linux® or Mac OSX®, the TM-T88V supports all current operating systems. As well as the adaptable data interface (serial, parallel, Ethernet, W-LAN or others), a USB port is fitted as standard so that a change to USB involves only a simple change of data cable.



It is easy to switch between interchangeable data interfaces and the standard USB connection.



The optional PS cover under the case has enough space to hold the power pack without increasing the overall space needed for the printer.

ALL THE ADVANTAGES AT A GLANCE

Cost-efficiency

Significant key performance indicators, e.g. system availability (MCBF), print head capacity or the number of possible cuts bear witness to the very high efficiency of the TM-T88V. The long warranty period of four years is additional proof of this.

Environmental protection

The TM-T88V is a 'green printer'. Evidence of its low environmental impact is its ever improving life cycle assessment.

Energy efficiency

As the first thermal printer in its class, the TM-T88V has been awarded the ENERGY STAR® certificate. Its power consumption in print and standby modes is extremely low.

Speed

Lightning printing speeds of up to 300 mm/s. The TM-T88V also prints in graphics mode at a very high speed.

Print quality

With the new 'automatic speed adjustment' function, the TM-T88V can be relied on to deliver consistent print quality even with serial interfaces and slow communication.

Grey scale print

Best-of-breed technology for graphics printing at the point of sale. Use grey scale printing to print graphics, images and logos.

Ergonomics

All printer components are easy to access and easy to clean. Both hardware and software are exceptionally user friendly.

Compatibility

The TM-T88V is fully compatible with the predecessor models TM-T88III and IV, and even the TM-T88II and 88I, with limitations.

Installation

Thanks to the additional built-in USB interface and self-explanatory software, the TM-T88V is very easy and quick to install.

Cable management

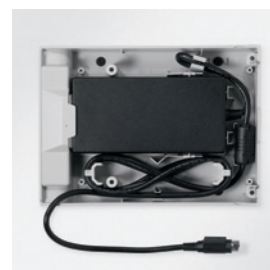
The cables of the TM-T88V can be fitted to the front, rear or side, as required. So printer installation is always uncluttered and the likelihood of tripping minimised.

TM-T88V SPECIFICATIONS

PRINTING SPECIFICATIONS	
Printing method	Thermal line printing
Dot density	180 dpi × 180 dpi
Printing direction	Unidirectional with friction feed
Paper width	80 mm or 58 mm (with paper guide installed)
Printing width	When paper width is set to 80 mm: 72 mm (2.83"), 512 dot positions; When paper width is set to 58 mm: 50.8 mm (2"), 360 dot positions
Characters per line (default)	For 80 mm paper: Font A: 42; Font B: 56; For 58 mm paper: Font A: 30; Font B: 40
Maximum printing speed	Text printing (with embedded fonts): 300 mm/s (11.81 inch/s); Page mode printing: 300 mm/s (11.81"/s); Raster bit-image printing: 300 mm/s (11.81"/s); Ladder bar code, 2-dimensional symbol printing: 100 mm/s (3.94"/s); (Printing speed may be slower depending on the data transmission speed and the combination of control commands.)
CHARACTER SPECIFICATIONS	
Number of characters	Alphanumeric characters: 95; Extended graphics: 128 × 43 pages (including user-defined page); International characters: 18 sets
Character structure	Font A: 12 × 24 (including 2-dot spacing horizontally); Font B: 9 × 17 (including 2-dot spacing horizontally)
AUTOCUTTER	
Cutting method	Scissors type with separated blades
Cutting type	Partial cut (cutting with one point in left edge left uncut)
ROLL PAPER SUPPLY UNIT	
Supply method	Drop-in paper roll
PAPER SPECIFICATION	
Paper type	Specified thermal paper
Form and size	Roll paper, the chromogenic side must face outside.
Roll paper diameter	83 mm (3.27") maximum
Roll paper core	Inside: 12 mm (0.47"); Outside: 18 mm (0.71") Width: Same as the paper width or less than paper width by 1 mm.
Take-up roll paper width	For 80 mm paper width model: 80 + 0.5/- 1.0 mm (3.15 + 0.02/- 0.04"); For 58 mm paper width model: 58 + 0.5/- 1.0 mm (2.28 + 0.02/- 0.04");
Paper width	For 80 mm paper width model: 79.5 ± 0.5 mm (3.13 ± 0.02"); For 58 mm paper width model: 57.5 ± 0.5 mm (2.26 ± 0.02")
INTERNAL BUFFER	
Receive buffer	Selectable as 45 bytes or 4 KB using the DIP switch.
User-defined buffer	12 KB (both for user-defined characters and user-defined bit images)
Macro buffer	2 KB
NV graphics memory	256 KB
NV user memory	1 KB
ELECTRICAL CHARACTERISTICS	
Supply voltage	DC + 24 V ± 7%; DC Current consumption (at 24 VDC, 25°C (77°F), normal print density); Operating: Mean: Approx. 1.8 A; Peak: Approx. 6.8 A (Font A, 42 columns); Standby: Mean approximately 0.1 A
Interfaces	Standard: cashdrawer, power supply, built-in USB and changeable serial, parallel, W-LAN, Ethernet or other interface
EMI and Safety Standards	CE marking: Directive: 2004/108/EC; EN55022 Class A; EN55024; IEC61000-4-2; IEC61000-4-3; IEC61000-4-4; IEC61000-4-5; IEC61000-4-6; IEC61000-4-11; Safety Standard: TÜV (EN60950-1); Conforms to International ENERGY STAR® program. (when used with Epson interface and Epson PS-180 power supply)
RELIABILITY	
Thermal head	150 million pulses, 150 km
Autocutter	2 million cuts: Specified original paper type PD150R, PD160R.
MTBF	360,000 hours (Failure is defined as a random failure occurring at the time of the random failure period.)
MCCBF	70 million lines (This is an average failure interval based on failures related to wear out and random failures up to the life of 20 million lines.)
ENVIRONMENTAL CONDITIONS	
Temperature	Operating: 5 to 45°C (41 to 113°F); Storage: - 10 to 50°C (14 to 122°F) (paper excluded)
Humidity	Operating: 10 to 90% RH; Storage: 10 to 90% RH (paper excluded)
COMMERCIAL WARRANTY	
BOX CONTENT	TM-T88V, spacer for 58mm paper, PS-180, power cable, power switch cover, user manual, warranty sheet, paper sample, interface cover



The optional wall mounting is ideal for hanging up the TM-T88V, in the kitchen section for example.



The optional power pack case saves space by fitting under the TM-T88V.



The TM-T88V is obtainable with a variety of interchangeable interfaces.



Order over 5,000 models to have the TM-T88V in the colour of your choice

EPSON COVERPLUS



EPSON Europe B.V. • Otto-Hahn-Str. 4 • D-40670 Meerbusch • Tel. +49 (0) 1805 377661 • www.epson-europe.com

Epson® is a registered trademark of the Seiko Epson® Corporation. All other products mentioned in this document are solely for the purposes of identification and may be brand names or registered trademarks of the companies in question. Besides the possibility of errors or omissions, all information is subject to modification at any time without prior notice.

EPSON®