

USB Camera

Operating Instructions

CMR-PC2 USB
CMR-PC3 USB
CMR-PC4 USB

- Microsoft, MS, MS-DOS and Windows are trademarks or registered trademarks of Microsoft Corporation.
- Licenced software from Luxxon Corporation is included in this package.
(Copyright 1999) All rights reserved
Luxxon Corporation
2055 Gateway Place, Suite 350
San Jose, CA 95110, USA
- Other system names and product names appearing in this document are generally registered trademarks or trademarks of their manufacturers, although ™ and ® marks are not shown in this document.

Before using this camera, please read the Software Licence Agreement provided in these Operating Instructions.

- Copying all or part of the contents of the Operating Instructions or the software supplied with this camera or renting the software without the permission of the copyright holder is prohibited by copyright laws.
- Sony is not liable for damage or loss resulting from the use of the software supplied with this camera, or for any claim from a third party.
- Sony assumes no responsibility aside from the replacement of the media due to manufacturing fault.
- The software supplied with this camera must not be used with other devices than this camera.
- Be sure to perform a test operation to confirm that images and sound are recorded correctly.
- Sony shall not be liable for the loss of recorded contents resulting from any inability of this camera or software to record images or sound.
- The software specifications are subject to change without notice.

Table of Contents

Introduction	4
System Requirements	4
Checking Kit Contents	4
Identifying the Parts	5
Parts of the CMR-PC2 USB/CMR-PC3 USB	5
Parts of the CMR-PC4 USB	5
Required Settings Before You Can Use Your Camera	6
Installing the Drivers, “SONY USB CAMERA Still Capture” and “SONY USB CAMERA Video Recorder”	6
Using Your Camera	12
Connecting the CMR-PC2 USB/CMR-PC3 USB to a Computer ...	12
Connecting the CMR-PC4 USB to a Computer	13
Detaching the Camera	15
Shooting Still Pictures with the Camera	16
Notes on Use	17
On placement	17
On operation	17
On transportation	17
On the lens	17
On discs	17
Maintenance	18
Cleaning the camera	18
Cleaning the lens	18
Cleaning discs	18
Main Specifications	19
CMR-PC2 USB	19
CMR-PC3 USB	19
CMR-PC4 USB	20
Operating Conditions/Storage Conditions	20
Supplied Accessories	20
Troubleshooting	21
SOFTWARE LICENCE AGREEMENT	24

Introduction

With your camera you can shoot both video clips and still pictures. Recorded moving pictures can be sent as video mail, or incorporated into presentations, reports or web pages. Still pictures can be used in the same manner, making your reports, E-mails and web pages more interesting.

System Requirements

The following system requirements must be met in order to use this camera.

- CPU: Pentium MMX 200 MHz or faster. (Celeron 533 MHz or faster is recommended.)
- OS: Windows 98, Windows 98 SE, Windows 2000 Professional, Windows Millennium Edition, Windows XP Professional or Windows XP Home Edition
- RAM: 64 MB or more.
- Free hard disk storage space: 230 MB or more.

Note

Please note that, with some computers, proper operation is not possible even if the computer satisfies the indicated system requirements.

Checking Kit Contents

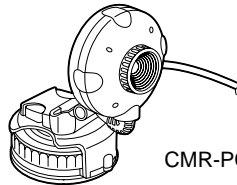
When unpacking, check that the following contents are supplied with your camera.

Should anything be missing, please contact your Sony dealer.

- USB camera with USB interface cable

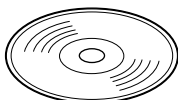


CMR-PC2 USB
CMR-PC3 USB



CMR-PC4 USB

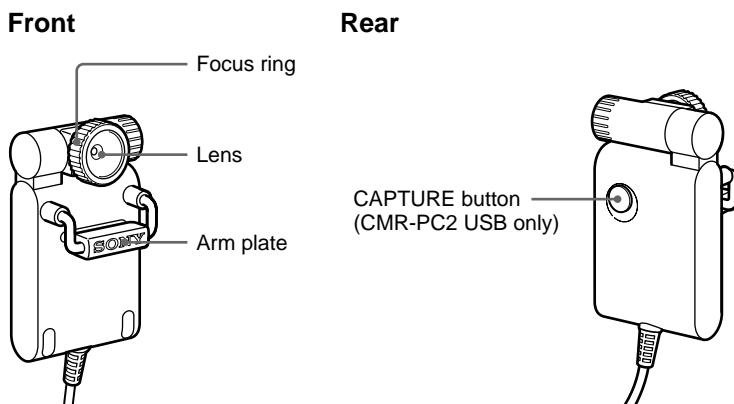
- Install disc (CD-ROM × 1) with drivers, bundled software, and a software manual (PDF)



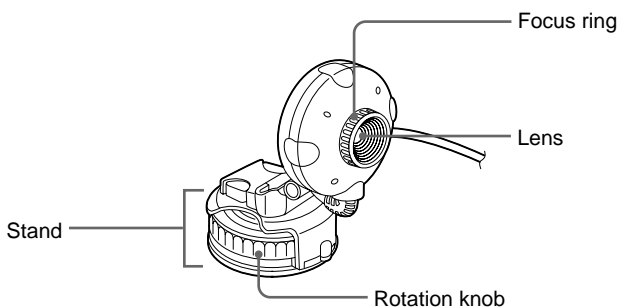
- Quick Start Guide
- Pouch (CMR-PC2 USB/PC3 USB only)
- Camera monitor mount (CMR-PC2 USB/PC3 USB only)
- Microphone
- Warranty card

Identifying the Parts

Parts of the CMR-PC2 USB/CMR-PC3 USB



Parts of the CMR-PC4 USB



Required Settings Before You Can Use Your Camera

Important

Make sure that you install the provided programs before connecting your Sony USB camera.

Installing the Drivers, “SONY USB CAMERA Still Capture” and “SONY USB CAMERA Video Recorder”

This section describes the procedures for installing the drivers required to connect your camera and the “SONY USB CAMERA Still Capture”, “SONY USB CAMERA Video Recorder” applications that make it easy to capture still images and record movies.

The sample screens of the Operating Instructions are taken from Windows Millennium Edition. The installation procedure for other operating systems is similar to that of Windows Millennium Edition.

Note

If the message “Digital Signature Not Found” appears during installation, click “Yes”. Display of this message does not indicate any problem with operation of the Sony USB camera or your computer.

- 1 Insert the CD-ROM into the appropriate disc drive.
- 2 The driver and program installation wizard starts automatically.



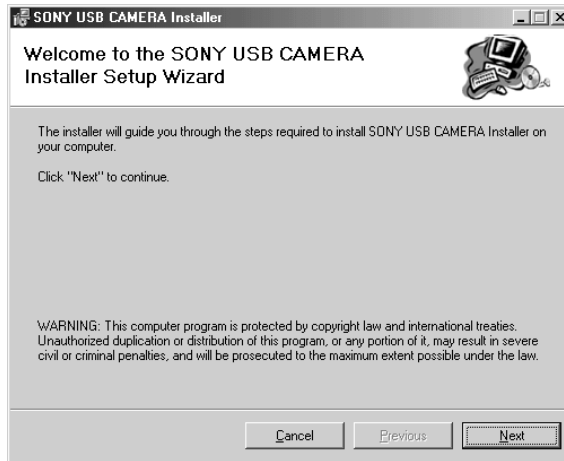
If the installation wizard of the CD-ROM does not start automatically, browse the CD and double-click the “START” file.

- 3 Follow the on-screen instructions to install the drivers.

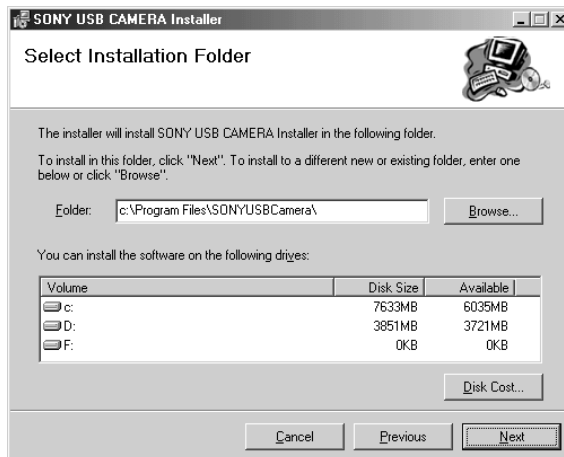
Note

To install the other programs on the CD-ROM, repeat steps 1 and 2 after completing the driver installation procedure, then select the program that you want to install and follow the on-screen instructions.

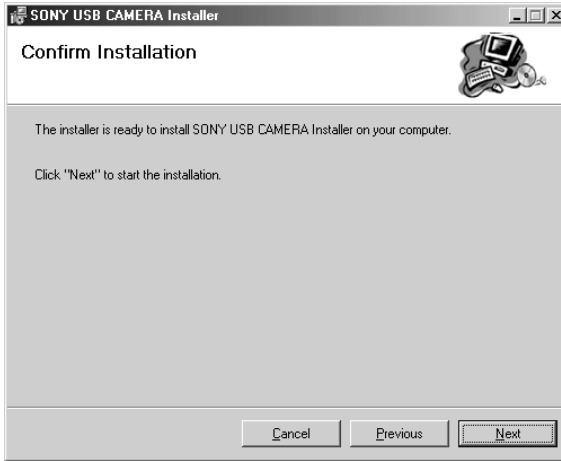
- 4 When “SONY USB CAMERA Installer Setup Wizard” window appears, select [Next] to continue.



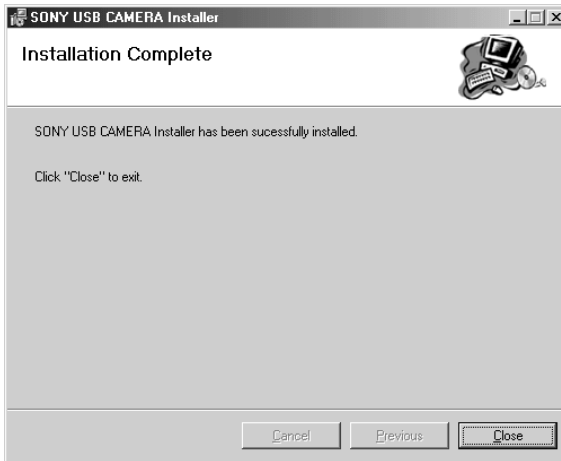
- 5 At this point you can select the folder for installation. Enter the name of the folder in which you want to install the programs, or click [Browse] to continue (installation in “C:\Program Files\SONYUSBCamera\” is recommended). Then select [Next] to continue.



- 6** The installation program asks for confirmation of the installation. If it is all right to start the installation, select [Next] to continue.



- 7** Now the “SONY USB CAMERA Drivers and Viewer” program has been installed. Click [Close] to close and exit the installation program.



- 8** Restart your computer.
- 9** After starting up the computer, click the “Start” button and confirm that “SONY USB CAMERA” has been added to the “Start” menu.



The following items appear when you point to “SONY USB CAMERA”. Clicking on any of the items starts it.

- SONY USB CAMERA Help
(This is Help for SONY USB CAMERA.)
- SONY USB CAMERA Operation Instructions
(This is the PDF file containing the manual you are now reading.)
- SONY USB CAMERA Still Capture
(This is software for capturing still images with your camera.)
- SONY USB CAMERA Video Recorder
(This is software for recording moving pictures images with your camera.)

10 Connect the Sony USB camera into the USB port of your computer.

For details, see “Connecting the CMR-PC2 USB/CMR-PC3 USB to a Computer” (page 12), or “Connecting the CMR-PC4 USB to a Computer” (page 13).

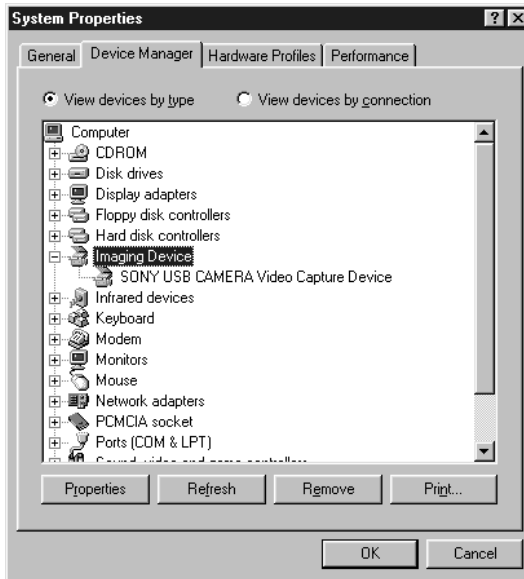
11 To test your Sony USB camera, on the “Start” menu click “SONY USB CAMERA Still Capture”, or “SONY USB CAMERA Video Recorder”.

If the “Add New Hardware Wizard” dialogue box appears when you connect your camera

If this happens, install drivers as follows:

- 1** The “Add New Hardware Wizard” searches for new drivers for the USB Composite Device.
Click [Next].
- 2** Select “Search for the best drive for your device” and click [Next].
- 3** Insert the Sony USB Camera CD-ROM in the CD-ROM drive.
- 4** Select “Specify a location” and type “d:\Drivers\Disk” where “d:” is the drive letter for your CD-ROM drive, then click [Next].
Windows starts installing the drivers.
- 5** “SONY USB CAMERA Video Capture Device” appears in the “Add New Hardware Wizard” dialogue.
Click [Finish].

- 6 If driver installation was successful, “SONY USB CAMERA Video Capture Device” is displayed under “System Properties” - “Device Manager” - “Imaging Device”.



Uninstalling the Drivers, “SONY USB CAMERA Still Capture” and “SONY USB CAMERA Video Recorder”

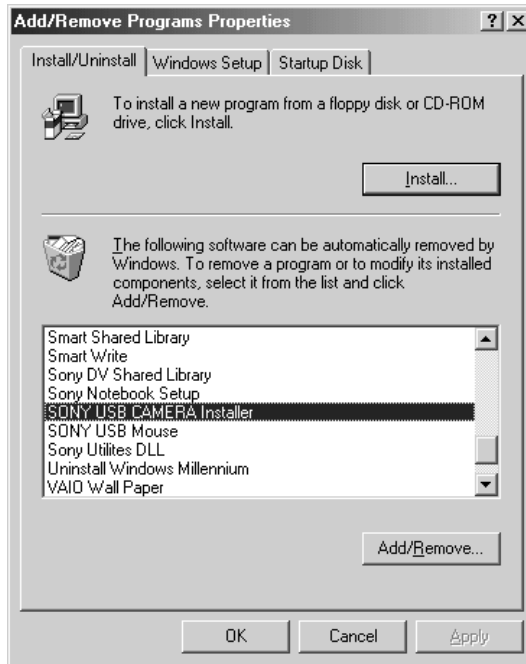
If installation of the drivers fails, use the following procedure to uninstall the drivers. Then perform the installation procedure again.

Note

First close down the software to be used with the camera.

- 1 Disconnect your camera from the computer.
- 2 Click the [Start] button on the task bar, point to [Setting], and then click [Control Panel].
The “Control Panel” appears.
- 3 Double-click [Add/Remove Programs] in the “Control Panel”.
The “Add/Remove Programs” dialogue box appears.
- 4 Click the [Install/Uninstall] tab.

- 5 Click [SONY USB CAMERA Installer] in the “application list” to highlight the item.



- 6 Click [Add/Remove].
The uninstaller starts up, and “SONY USB CAMERA Installer” appears.
- 7 Choose “Remove SONY USB CAMERA Installer,” and then click [Finish].
The programs and files related to the “SONY USB CAMERA Installer” are removed.
- 8 Click [Close].
- 9 Restart the computer.

Using Your Camera

This section describes how to attach the camera to a computer and how to handle the camera.

When using the CMR-PC2 USB or CMR-PC3 USB, see “Connecting the CMR-PC2 USB/CMR-PC3 USB to a Computer.” When using the CMR-PC4 USB, see “Connecting the CMR-PC4 USB to a Computer.”

Connecting the CMR-PC2 USB/CMR-PC3 USB to a Computer

You can connect or disconnect your camera to or from the computer while the computer is powered on. For details on the location of the USB connector, please see the instruction manual for the computer.

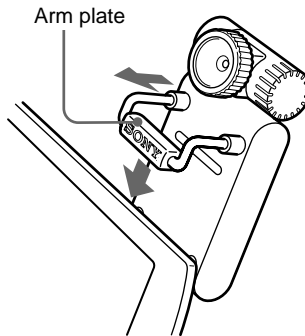
Note

- Do not connect or disconnect the camera’s USB cable during startup or shut down of Windows. This could cause your camera or computer to malfunction.
- Do not connect or disconnect the camera’s USB cable during startup or shut down of software used with the camera. This could result in unstable operation of the computer.

Mounting the Camera on a Notebook Computer

Attach your camera to the notebook computer, and then connect the USB cable to the USB connector on the notebook computer.

Extend the arm plate by hand and hook the camera onto the display panel as shown in the figure below.

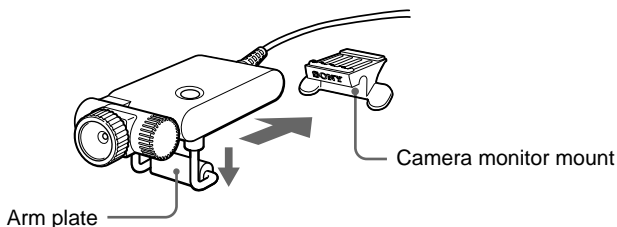


Mounting the Camera on a Desktop Computer

Connect the USB cable from your camera to the USB connector on the desktop computer.

Use the camera monitor mount provided to secure the camera to the top of the computer display.

Affix the camera monitor mount to the computer display, and then pull the arm plate open with your fingers and hook the camera onto the camera monitor mount.



Connecting the CMR-PC4 USB to a Computer

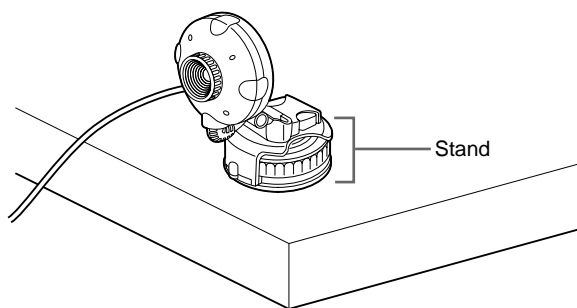
You can connect or disconnect your camera to or from the computer while the computer is powered on. For details on the location of the USB connector, please see the instruction manual for the computer.

Note

- Do not connect or disconnect the camera's USB cable during startup or shut down of Windows. This could cause your camera or computer to malfunction.
- Do not connect or disconnect the camera's USB cable during startup or shut down of software used with the camera. This could result in unstable operation of the computer.

Using the Camera on a Desk Top

Use the stand to place the camera on your desk or table top, and then connect the USB cable to the USB connector on the computer.



Attaching the Camera to a Flat, Shiny Surface with the Suction Mount

Use the suction mount to attach the camera to a windowpane or other smooth, shiny surface, and then connect the USB cable to the USB connector on the computer.

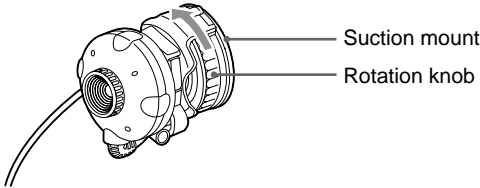
Note

Be sure to install the camera in a stable location. Installing it in an unstable location may result in it falling.

Attaching the Mount

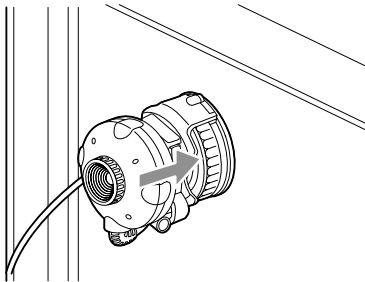
Before mounting the camera, make sure that the mounting surface and the surface of the suction mount are both clean and free of dust.

- 1 Turn the stand's rotation knob counterclockwise to loosen the suction mount.

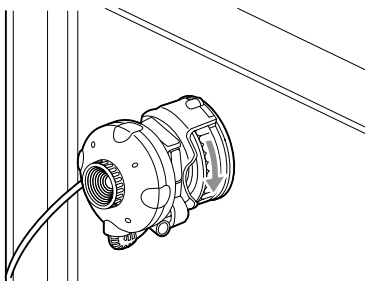


- 2 Affix the suction mount to the mounting surface.

Flatten the suction mount against the mounting surface by pressing both sides of the rotation knob.

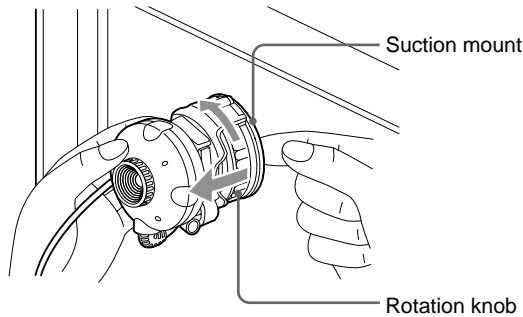


- 3 Turn the stand's rotation knob clockwise to tighten the suction mount.



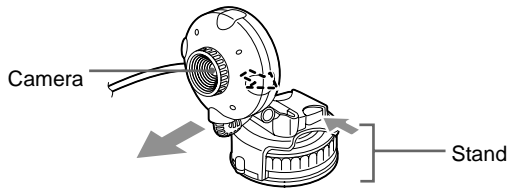
Removing the Mount

Turn the stand's rotation knob counterclockwise to loosen the suction mount, and then lift one edge of the suction mount to peel it away from the mounting surface.



Removing the Camera from the Stand

Remove the camera from its stand as shown in the illustration below.



Detaching the Camera

Note

- If you detach your camera while the computer is powered on, be sure to perform the following procedures. If this is not performed correctly, there is a risk that the computer may fail to operate correctly.
- When you detach the camera while the computer power is off, step 1 is not required. However, when the USB cable is disconnected with the computer in the power saving mode, the system may not recognise the camera if the USB cable is plugged in again.

1 Close the software used with your camera.

2 Unplug the USB cable.

Note

- Unplugging by grasping a part of the cable may result in damage. Be sure to hold the connector section when unplugging.
- When using the camera monitor mount with the CMR-PC2 USB or the CMR-PC3 USB, pull the arm plate open with your fingers and remove the camera from the camera monitor mount.

Shooting Still Pictures with the Camera

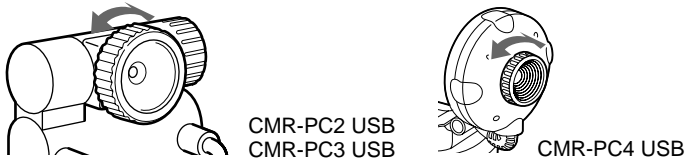
Application software is used to shoot pictures. Be sure to install the application software in advance.

1 Connect your camera.

You can connect or disconnect your camera to and from the computer while the computer is powered on. For details, see “Connecting the CMR-PC2 USB/CMR-PC3 USB to a Computer” (page 12) or “Connecting the CMR-PC4 USB to a Computer” (page 13).

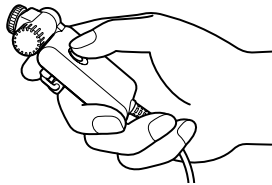
2 Start the application software.

3 Turn the focus ring to adjust the focus.



4 Press the CAPTURE button to shoot pictures (CMR-PC2 USB only).

In addition to attaching the camera to the computer, you can also use it held in hand as shown in the figure to shoot from various angles.



- The CMR-PC3 USB and the CMR-PC4 USB can capture still pictures through the “SONY USB CAMERA Still Capture” application.
- When using the CMR-PC2 USB to capture still pictures, you can confirm the picture before actually capturing it by pushing the CAPTURE button half way in.
- Whether or not still pictures can be shot, depends on the application software.

Notes on Use

On placement

During use or storage, do not place your camera in the following places. It may result in malfunction.

- Places where the temperature becomes excessively high.
Do not leave your camera in a car parked in direct sunlight. This could result in deformation and damage.
- In direct sunlight or near heat sources. This could result in deformation and damage.
- Dusty locations, beaches or other places with much sand or dust.
When using your camera on a sandy beach or dusty location, be sure that the camera is not exposed to sand or dust. Sand or dust may cause the camera to malfunction and sometimes the malfunction cannot be repaired.
- Do not point the lens directly at the sun.
The lens may be damaged and image burn-in, etc. may result. Be careful when placing the camera under sunlight or by a window.
- Keep the unit away from strong magnetic fields. Recording may not perform normally.

On operation

- Do not disconnect the camera's USB cable while the application is in operation. This may result in malfunction.
- Do not place objects on top of your camera.
- Avoid exposure to rapid temperature fluctuations. Do not use your camera

immediately after it is brought from a cold to a warm location, or if the temperature of the room is raised rapidly. Moisture may condense inside the camera. Wait a while before using the camera.

On transportation

Retain the shipping box. It may come in handy if the camera has to be transported in the future.

On the lens

Do not touch the lens of the camera.

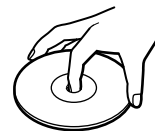
On discs

Observe the following precautions to protect the data recorded on discs.

- Do not affix paper, etc. to the disc, and do not scratch the disc.



- Do not touch the side of the disc with recorded data (playback side).



- Do not store a disc where it is subject to excessive dust, direct sunlight, high humidity, or near heat sources.
- Do not spill liquids on the disc.
- To protect valuable data, always place the disc in its case for storage.

Maintenance

Cleaning the camera

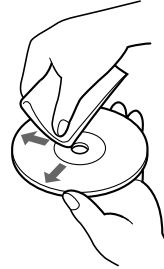
Wipe with a dry soft cloth. If very dirty, use a soft cloth slightly moistened with a mild detergent solution. Do not use thinner, benzine, alcohol, etc. as these can damage the finish of the camera.

Cleaning the lens

Clean the lens surface with a blower brush or a soft brush to remove dust.

Cleaning discs

- Fingerprints and dust on the surface of a disc may cause read errors. Always retain discs in clean condition.
- For normal cleaning, hold the disc by its edge and use a soft cloth to wipe the surface from the centre out.



- If the disc is very dirty, moisten a soft cloth with water, wring it out well, and use it to wipe the surface of the disc from the centre out. Wipe off any remaining moisture with a dry soft cloth.
- Do not use solvents such as benzine, thinner, commercially available cleaners or anti-static spray, as they may cause damage to the disc.

Main Specifications

CMR-PC2 USB

Image device

1/6" CCD (Charge Coupled Device),
350 000 pixels

Lens

2 groups with 2 elements, F2.8
Focal distance $f = 2.4$ mm
($f = 34$ mm, when converted into a 35
mm still camera)

White balance

Auto/Indoor/Outdoor/Hold

Shutter speed

Auto/Shutter Priority/Hold

Video capture formats/sizes

RGB 24 bits/YUY2/UYVY
 40×30 , 80×60 , 160×120 , 176×144 ,
 320×240 , 352×288 , 640×480 ,
 800×600 , 1024×768 , 1152×864 ,
 1280×960

Display frame rate

Max. 30 frames/sec.*

* Differs with the computer
specifications and application usage
conditions.

Power consumption

Approx. 1 W

External dimensions (W/H/D)

Approx. $1.4 \times 2.6 \times 1$ in
 $36 \times 67 \times 25$ mm

Cable length

About 78.7 in
0.9 m

Mass

Approx. 53 g (main unit only)

CMR-PC3 USB

Image device

1/6" CMOS Sensor, 100 000 pixels

Lens

2 groups with 2 elements, F2.8
Focal distance $f = 2.4$ mm
($f = 34$ mm, when converted into a 35
mm still camera)

White balance

Auto/Indoor/Outdoor/Hold

Shutter speed

Auto/Shutter Priority/Hold

Video capture formats/sizes

RGB 24 bits/YUY2/UYVY
 40×30 , 80×60 , 160×120 , 176×144 ,
 320×240 , 352×288 , 640×480

Display frame rate

Max. 25 frames/sec.*

* Differs with the computer
specifications and application usage
conditions.

Power consumption

Approx. 0.54 W

External dimensions (W/H/D)

Approx. $1.4 \times 2.6 \times 1$ in
 $36 \times 67 \times 25$ mm

Cable length

About 35.4 in
0.9 m

Mass

Approx. 53 g (main unit only)

CMR-PC4 USB

Image device

1/6" CMOS Sensor, 100 000 pixels

Lens

2 groups with 2 elements, F2.8

Focal distance $f = 2.4$ mm

($f = 34$ mm, when converted into a 35 mm still camera)

White balance

Auto/Indoor/Outdoor/Hold

Shutter speed

Auto/Shutter Priority/Hold

Video capture formats/sizes

RGB 24 bits/YUY2/UYVY

40×30 , 80×60 , 160×120 , 176×144 ,
 320×240 , 352×288 , 640×480

Display frame rate

Max. 25 frames/sec.*

* Differs with the computer specifications and application usage conditions.

Power consumption

Approx. 0.54 W

External dimensions (W/H/D)

Approx. $2.2 \times 3.6 \times 3.3$ in
 $56 \times 91 \times 85$ mm

Cable length

About 78.7 in
2 m

Mass

Approx. 120 g (main unit only)

Operating Conditions/ Storage Conditions

Operating temperature:

41°F to 95°F (temperature gradient
18°F/h or lower)

5°C to 35°C (temperature gradient
10°C/h or lower)

Operating humidity:

20% to 80% RH (no condensation).

However, the relative humidity at 95°F/
35°C should be 65% or lower (wet-bulb
temperature 84°F/29°C or lower)

Storage temperature:

-4°F to 140°F (temperature gradient
18°F/h or lower)

-20°C to 60°C (temperature gradient
10°C/h or lower)

Storage humidity:

10% to 90% RH (no condensation).

However, the relative humidity at
140°F/60°C should be 20% or lower
(wet-bulb temperature 95°F/35°C or
lower)

Supplied Accessories

- Install disc (CD-ROM \times 1) with drivers, bundled software, and a software manual (PDF)
- Quick Start Guide
- Pouch (CMR-PC2 USB/PC3 USB only)
- Camera monitor mount (CMR-PC2 USB/PC3 USB only)
- Microphone
- Warranty card

Design and specifications are subject to change without notice.

Troubleshooting

Please use the following checklist for troubleshooting before consulting your dealer. Should any problem persist, please consult your nearest Sony dealer.

Symptom	Cause/Remedy
The computer does not recognise my camera.	<ul style="list-style-type: none">• The USB cable is not connected correctly. → After closing any running software, connect the cable correctly.• Driver was not installed correctly. → Once uninstall the driver, reboot the computer and then attempt to install the driver again. (See page 10.) <p>If this fails, perform the following steps.</p> <ol style="list-style-type: none">1 Connect your camera to the computer. If the “Add New Hardware Wizard” appears, click [Cancel].2 With your camera connected, click the [Start] button in the task bar, point to [Setting], and then click [Control Panel]. The “Control Panel” appears.3 Double-click [System]. “System Properties” appears.4 Click the [Device Manager] tab to display the device list.5 If any of the following items is displayed among the following devices, delete the item.<ul style="list-style-type: none">- [USB Audio Device] in [Sound, video and game controllers]- [Unknown device] or [Composite USB Device] in [Other devices]- [USB compatible device] in [Universal serial bus controller]6 Disconnect your camera from the computer, and then restart the computer.7 Install the driver from the install disc, and then connect your camera. <ul style="list-style-type: none">• OS used is not Windows98, Windows 98 SE, Windows 2000 Professional, Windows Millennium Edition, Windows XP Professional or Windows XP Home Edition. → Use the corresponding OS.• USB root hub is not recognised. → Correctly install the corresponding OS.• USB can no longer be used. → Confirm the computer’s system properties.

Symptom	Cause/Remedy
The computer does not recognise my camera.	<ul style="list-style-type: none"> • When your camera is connected via USB hub, sufficient power is not supplied from the hub. → Use a USB hub capable of supplying 500 mA for each port.
When shooting a bright subject on a dark background, the image on the display shows vertical stripes radiating from the subject.	This phenomenon is called “smear”. It is not a malfunction.
The image shown in the finder of commercially available software, etc. is grainy.	When a fast moving subject is shown in the finder, step-like features in horizontal direction may appear, or horizontal stripes may appear in moving parts. However this is not a malfunction.
Still pictures or video clips captured with your camera appear grainy on the display.	<ul style="list-style-type: none"> • Images shot under fluorescent light may contain light reflections. • If the captured image contains dark parts, red or green noise sometimes appears. • The lens is dirty. → Clean the lens. • The lens is out of focus. → Adjust the focus using the focus ring.
When commercially available application software is used to capture moving pictures from your camera, some frames are lost and the sound falls out.	<ul style="list-style-type: none"> • When multiple applications are running, the processing capacity of the computer may be exceeded. Close applications not used. • The computer’s power management function is activated. → Check the CPU speed setting. For details on settings, see the instruction manual for the computer.
Black images are captured when moving pictures or still pictures are captured.	<p>Black images are captured temporarily during software startup or immediately after the image size is changed.</p> <p>→ Capture the desired image after it is displayed.</p>
The images from your camera freeze for several seconds.	<p>In the following instances, the images may freeze for several seconds. This is not a malfunction.</p> <ul style="list-style-type: none"> • When a keyboard short cut operation involving Fn keys is performed. • When the load on the CPU is heavy.
The images from the camera are not displayed.	<ul style="list-style-type: none"> • Multiple application software programs for capturing images are running simultaneously. → Close all but one of the applications. • Video memory has become insufficient due to the computer’s image mode or number of colours, or as a result of other circumstances. → Lower the resolution or reduce the number of colours. • If the images from the camera do not appear even after performing the above steps, restart the computer.

Symptom	Cause/Remedy
After connecting the USB cable, the “Add New Hardware Wizard” appears.	<ul style="list-style-type: none"> • The device driver is not installed. <ul style="list-style-type: none"> → Click [Cancel] of the [Add New Hardware Wizard], and then remove the USB cable from the USB connector. Then install the driver by following the procedure described in “Installing the Drivers, “SONY USB CAMERA Still Capture” and “SONY USB CAMERA Video Recorder”” (see page 6).
The computer does not enter the power saving mode, but returns immediately, or the operation of Windows becomes unstable.	Close all software in use, and then restart the computer. If restart fails, refer to the instruction manual for the computer and turn off the power.
Even when the camera is in use, the computer’s LCD display becomes dark, and the computer enters a power saving mode, such as system idle, suspend or hibernation.	<p>The power saving mode is entered even if a USB device is in use.</p> <ul style="list-style-type: none"> → If you are using a desktop computer, and timer settings, such as system standby, have been made, set the timer to OFF using [Power Management] in the [Control Panel]. → The power saving mode is released when you operate the computer’s touch pad, mouse or keyboard.
The computer does not return from the video standby mode.	The power saving mode is released when you operate the computer’s touch pad, mouse or keyboard. For details, see the instruction manual for the computer.

Thank you for purchasing the Sony USB Camera CMR-PC2 USB/PC3 USB/PC4 USB. This camera comes with the licenced software product described below. Please read the following Software Licence Agreement before installing this software. By opening the software package and using this software, you agree to the terms of the Software Licence Agreement.

SONY USB CAMERA Still Capture SONY USB CAMERA Video Recorder

<h3 style="margin: 0;">SOFTWARE LICENCE AGREEMENT</h3>

This is a legal agreement between you (hereafter referred to as the User) and Sony Corporation (hereinafter referred to as Sony) pertaining to the right to use the Driver Software program (hereafter referred to as the PROGRAM).

1. General rules

Sony grants the User the right to use the PROGRAM in the country where the User purchased the PROGRAM. The User is not granted the exclusive right to use the PROGRAM, and the User may not transfer the right to use the PROGRAM to anyone else.

2. Right of use

1. The right to use the PROGRAM granted to the User under this agreement applies only to the User making the original purchase.
2. The User may not copy, update, add to, or modify the PROGRAM or any accompanying documents, either in whole or in part. However, the User may make one copy of the PROGRAM solely for backup.
3. The User may not delete or change the PROGRAM's copyright notice. The User must keep a record of the location in which the backup copy of the PROGRAM is stored.

3. Restriction on transfer of the PROGRAM

1. The User may not transfer the Right of Use described above to any third party nor allow for any third party to use the PROGRAM unless the User obtains the advance written permission of Sony.
2. The User may not export or transport the PROGRAM or documents accompanying the PROGRAM from the country where the User purchased the PROGRAM to any other country.
3. The User may not disassemble or de-compile the PROGRAM, or nanalyse the source code of the PROGRAM.

4. Copyright

Copyright and all other rights relating to the PROGRAM and documents accompanying the PROGRAM are owned by Sony or the original rightful person or organization (hereafter referred to as the original rightful person) granting Sony the right to use the PROGRAM. The User is granted no rights other than those specified in this agreement.

5. Exemption of responsibility

In no event shall Sony be liable for any damages whatsoever to the User or to any other third party arising out of the use of or inability to use the PROGRAM.

6. Warranty

1. Sony warrants the following for 30 days from the date Sony delivers the PROGRAM to the User.
 - ① Sony will deliver a new package of the PROGRAM at the discretion of Sony if any apparent defect is found in the disks of the PROGRAM.
 - ② The User shall pay the fee of the program media, shipment, and other expenses required for delivering the new package described above.
 - ③ Sony disclaims the above warranties if the PROGRAM has been used in a manner other than that specified in this agreement or has been used in combination with other programs.
2. Sony disclaims all other warranties with regard to the PROGRAM.

7. Liability to third parties

If any dispute relating to infringement of copyright, patent, or other intangible property rights arises between the User and a third party as a consequence of use the PROGRAM, the User shall settle the dispute at the User's own expense, and shall make no claim against Sony or the original rightful person.

8. Protection of Confidentiality

The User shall protect the confidentiality of the PROGRAM, documents accompanying the PROGRAM and the contents of this agreement, and shall not disclose or compromise such confidentiality without approval of Sony.

9. Cancellation of agreement

1. The User may cancel this agreement at any time by taking the steps described in Section 10 below.
2. Sony may cancel this agreement when
 - ① the User violates this agreement, or
 - ② the User has his property attached, is sequestered, or is subjected to other compulsory proceedings. Sony may claim damages arising out of the above matter.

10. Cessation of use of the PROGRAM

If this agreement is canceled according to the above provisions, the User shall cease using the PROGRAM and its copy and issue a document attesting to cessation of use to Sony within 2 weeks from the date of cancellation of this agreement.

11. Others

If any doubt arises concerning matters that are not covered in this agreement or regarding interpretation of this agreement, Sony and the User shall discuss and settle the matter in good faith.

