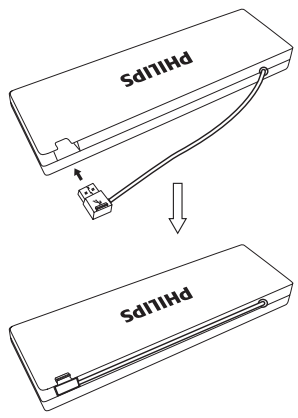
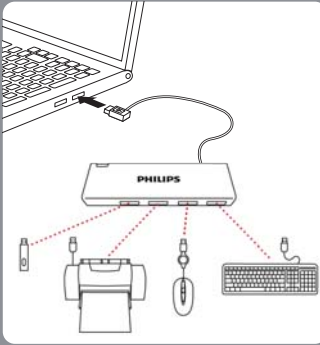
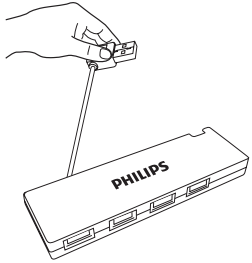




## SNP1000 Hub



## EN

This device complies with Part 15 of the FCC Rules. Operation is subject to the following two conditions:  
1. This device may not cause harmful interference, and  
2. This device must accept any interference received, including interference that may cause undesired operation.

### Note:

This equipment has been tested and found to comply with the limits for a Class B digital device, pursuant to part 15 of the FCC Rules. These limits are designed to provide reasonable protection against harmful interference in a residential installation. This equipment generates, uses, and can radiate radio frequency energy and, if not installed and used in accordance with the instruction manual, may cause harmful interference to radio communications. However, there is no guarantee that interference will not occur in a particular installation. If this equipment does cause interference to radio or television reception, which can be determined by turning the equipment off and on, the user is encouraged to try to correct the interference by one or more of the following measures:

- Relocate the receiving antenna.
- Increase the separation between the equipment and receiver.
- Connect the equipment into an outlet on a circuit different from that to which the receiver is connected.
- Consult the dealer or an experienced radio/TV technician for help.

## EN SNP1000 Hub

NOTE: The hub is a bus-powered hub. It works perfectly with low drain device only.

## BG Концентратор SNP1000

ЗАБЕЛЕЖКА: Концентраторът се захранва през интерфейса. Той работи без проблеми само с устройства с ниско потребление.

## CS Hub SNP1000

POZNÁMKA: Hub je napájen sběrnicí. Funguje bezvadně pouze u zařízení s nízkým odběrem proudu.

## DE SNP1000 Hub

HINWEIS: Bei dem Hub handelt es sich um einen Bus-Powered-Hub. Der Hub funktioniert nur bei Geräten mit geringem Energiebedarf optimal.

## EL Διαμοιρέας SNP1000

ΣΗΜΕΙΩΣΗ: Ο διαμοιρέας αντλεί ενέργεια από διαύλο. Λειτουργεί άψογα μόνο με συσκευές χαμηλής κατανάλωσης.

## ES Hub SNP1000

NOTA: El hub se alimenta mediante cable bus. Funciona perfectamente solo con dispositivos que consuman poca energía.

## ET SNP1000 jaotur

MÄRKUS: jaotur saab toite liinist. See töötab täiuslikult ainult väikese voolubetega seadmetega.

## FI SNP1000-keskitin

HUOMAUTUS: Tämä keskitin saa virtansa liitännästä. Se toimii hyvin vain vähän virtaa kuluttavien laitteiden kanssa.

## FR Concentrateur SNP1000

REMARQUE: le concentrateur est alimenté par bus. Il fonctionne parfaitement avec les appareils se déchargeant lentement uniquement.

## HR SNP1000 čvorište

NAPOMENA: Čvorište napaja sabirnica. Savršeno radi samo s uređajem koji troši malo energije.

## HU SNP1000 Hub

MEGJEGYZÉS: A hub áramellátása USB-sínről történik. Csak kis terhelésű készülékek működik tökéletesen.

## IT Hub SNP1000

NOTA: l'hub viene alimentato tramite collegamento bus. È adatto solo per dispositivi a basso consumo.

## KO SNP1000 허브

참고: 허브는 버스 전원 허브이며, 에너지 사용량이 낮은 기기에서만 원전하게 작동합니다.

## LT SNP1000 šakotuvas

PASTABA: šakotuvas yra magistralinis šakotuvas. Jis puikiai veikia tik su mažai energijos vartojančiais įrenginiais.

## LV SNP1000 centrmezgls

PIEZĪME: Centrmezgls ir mezgls, kura darbību nodrošina kopne. Tas lieliski darbojas tikai ar mazjaudas ierīcēm.

## NL SNP1000-hub

Opmerking: de hub werkt zonder externe voeding. De hub werkt alleen probleemloos met apparaten die weinig energie vragen.

## PL Koncentrator SNP1000

UWAGA: Urządzenie jest pasywnym koncentratorom USB. Współpracuje on idealnie jedynie z urządzeniami o niskim poborze energii.

## PT Hub SNP1000

NOTA: O hub é alimentado por bus. Este funciona correctamente apenas com aparelhos de baixo consumo.

## RO Hub SNP1000

NOTĂ: Hub-ul este alimentat de rețea. Funcționează perfect numai cu dispozitive cu consum redus.

## RU Концентратор SNP1000

ПРИМЕЧАНИЕ. В концентраторе использована технология Bus-powered. Используется только со слабопотребными устройствами.

## SK Rozbočovač SNP1000

POZNÁMKA: Rozbočovač predstavuje rozbočovač s napájaním cez zbernicu. Dokonale funguje len so zariadeniami s nízkym odberom.

## SL Zvezdišče SNP1000

OPOMBA: Napajanje zvezdišča poteka preko kabla. Odlično deluje samo z varčnimi napravami.

## SV SNP1000 Hubb

Obs! Hubben drivs via USB-bussen. Den fungerar perfekt med endast en effektivt enhet.

## TR SNP1000 Hub (Göbek)

NOT: Hub (göbek) veriyolu güç kaynaklıdır. Sadece düşük boşaltmalı cihazlarla mükemmel çalışır.

## UK Концентратор SNP1000

ПРИМІТКА. Цей концентратор є концентратором із шинним живленням. Добре працює лише з пристроями із низьким рівнем споживання енергії.

## ZH-CN SNP1000 集线器

注意: 该集线器是一款总线供电集线器。它只有与低耗电设备结合使用才能发挥最佳性能。

## ZH-TW SNP1000 集線器

注意: 本集線器為匯流排供電。必須搭配低耗電裝置。集線器才能完全發揮作用。

## RoHS information

部件名称 Name of the Parts	产品中有害物质或元素的名称及含量					
	铅 (Pb)	汞 (Hg)	镉 (Cd)	六价铬 (Cr(VI))	多溴联苯 (PBB)	多溴二苯醚 (PBDE)
电缆Cable	X	O	O	O	O	O
电路板 组件 PWB Assembly	X	O	O	O	O	O
塑料部件 Plastic parts	X	O	O	X	O	O
金属部件 Metallic elements	X	O	O	X	O	O
其它部件 Others	X	O	O	X	O	O

O: 表示该有害物质在该部件所有均质材料中的含量均在 SJ/T11363-2006标准规定的限量要求以下。

X: 表示该有害物质至少在该部件的某一均质材料中的含量超出 SJ/T11363-2006标准规定的限量要求。

注: ① 本产品大多数的部件采用无毒无害的环保材料制造, 含有有害物质或元素的部件因全球技术发展水平限制而无法实现有害物质或元素替代。  
② 环保使用期限的参考标准取决于产品正常工作的温度和湿度等条件。

**10** 环保使用期限 Environmental Protection Use Period. 此标识指期限 (十年, 从生产日期算起), 电子信息产品中含有的有害物质或元素在正常使用的条件下不会发生外泄或突变, 用户使用该电子信息产品不会对环境污染造成严重污染或对其人身、财产造成严重损害的期限。

## EMF

Electric, Magnetic and Electromagnetic Fields (EMF)

- Philips Royal Electronics manufactures and sells many products targeted at consumers, which, like any electronic apparatus, in general have the ability to emit and receive electro magnetic signals.
- One of Philips' leading Business Principles is to take all necessary health and safety measures for our products, to comply with all applicable legal requirements and to stay well within the EMF standards applicable at the time of producing products.
- Philips is committed to develop, produce and market products that cause no adverse health effects.
- Philips confirms that if its products are handled properly for their intended use, they are safe to use according to scientific evidence available today.
- Philips plays an active role in the development of international EMF and safety standards, enabling Philips to anticipate further developments in standardization for early integration in its products.

## Health Warning

Improper work habits when using of a keyboard or mouse may result in discomfort or serious injury such as strain to your hands, wrists or other parts of your body.

Whether you are working or playing, it is important to avoid awkward postures and position your body comfortably. Not only can this improve your overall productivity, it may help you avoid MSDs (Musculoskeletal Disorders).

Changing your posture during extended tasks may also help you avoid discomfort and fatigue.

## Environmental Information

### Disposal of your old product

Your product is designed and manufactured with high quality materials and components, which can be recycled and reused.

When this crossed-out wheeled bin symbol is attached to a product it means the product is covered by the European Directive 2002/96/EC.

Please inform yourself about the local separate collection system for electrical and electronic products.

Please act according to your local rules and do not dispose of your old products with your normal household waste. The correct disposal of your old product will help prevent potential negative consequences for the environment and human health.

## Guarantee certificate

1 year warranty

Type:  SCO3210

Serial nr: \_\_\_\_\_

Date of Purchase \_\_\_\_\_

Dealer's name, address and signature 销售商名称, 地址及签字

www.philips.com/welcome

This document is printed on chlorine free produced paper. Data subject to change without notice

For China only  
只限中国地区

Printed in China