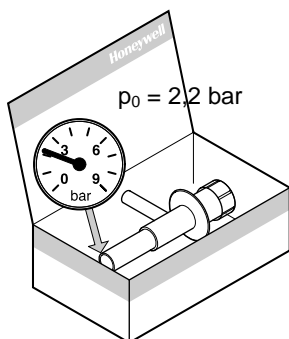
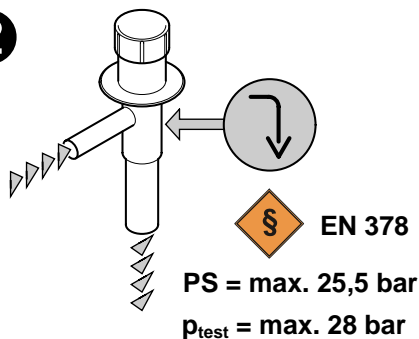
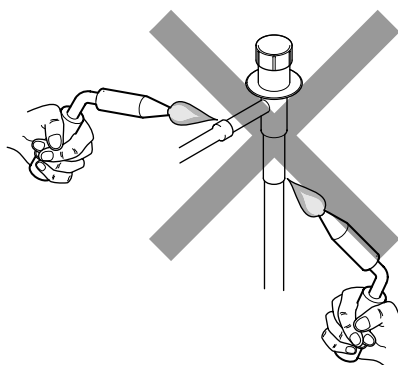
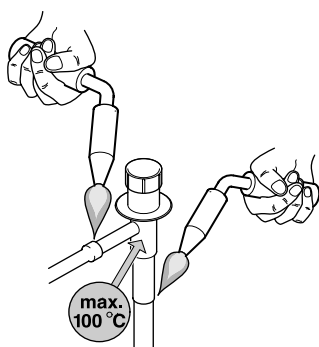
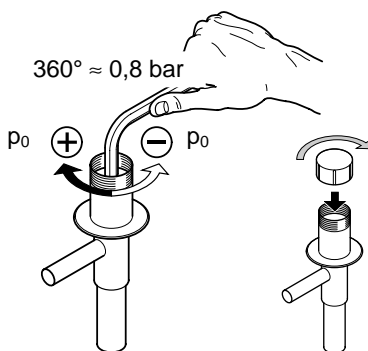
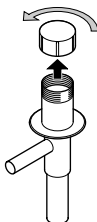
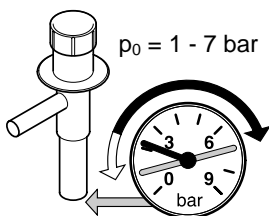


## AEL

Einbau-Anleitung • Installation instructions  
Instructions de montage



Automatisches Expansionsventil  
Automatic expansion valve  
Détendeur automatique

**1****2****3****4** $p_0 \neq 2,2 \text{ bar}$ **Honeywell****Automation and Control Solutions**

Honeywell GmbH

Hardhofweg • 74821 Mosbach / Germany

Phone: +49 (0) 62 61 / 81-475

Fax: +49 (0) 62 61 / 81-461

E-Mail: [Cooling.Mosbach@honeywell.com](mailto:Cooling.Mosbach@honeywell.com)[www.honeywell-cooling.com](http://www.honeywell-cooling.com)

Manufactured for and on behalf of the  
Environment and Combustion Controls  
Division of Honeywell Technologies Sàrl,  
Eublens, Route du Bois 37, Switzerland  
by its authorised representative Honeywell GmbH