

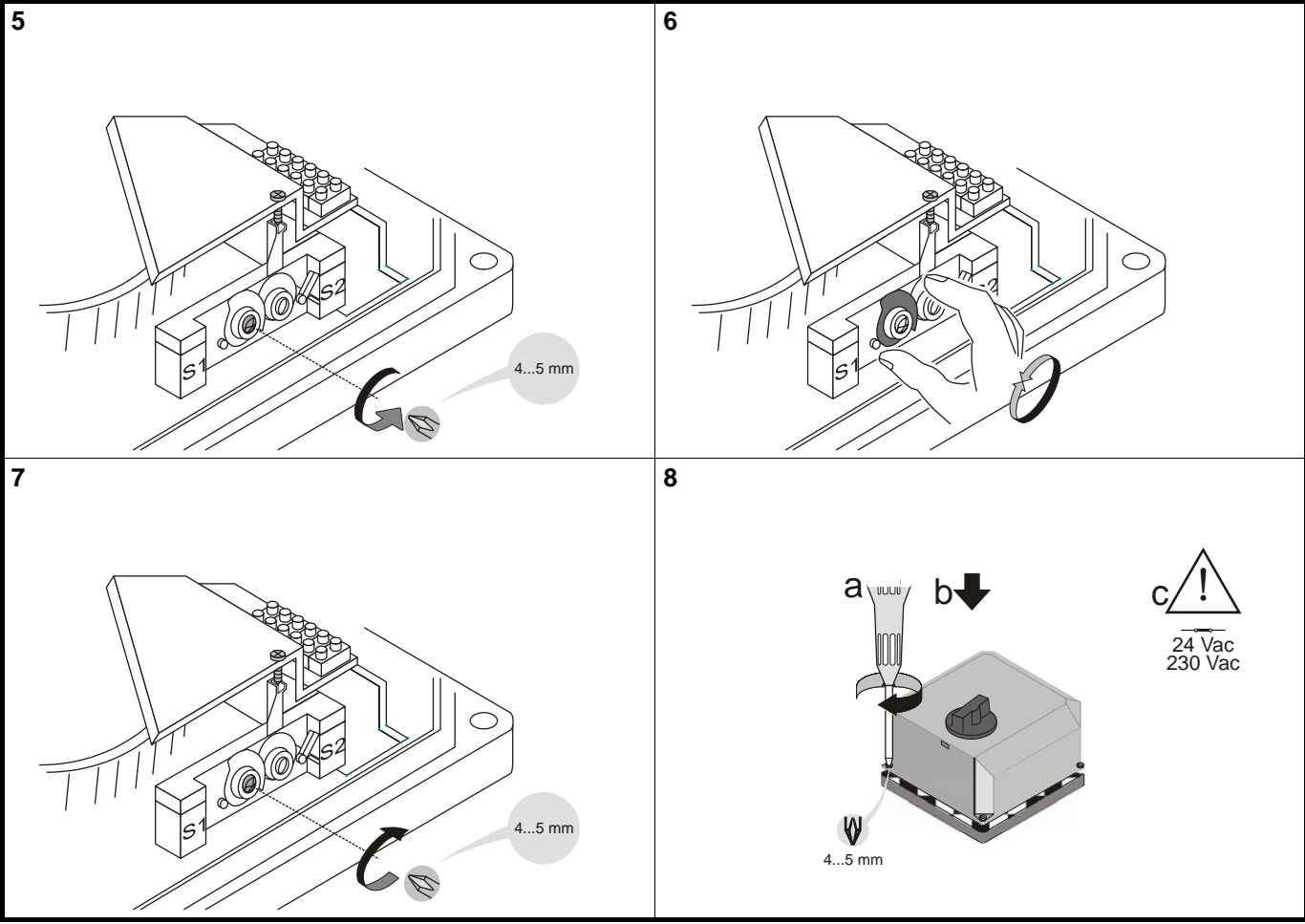
D Montageanweisung
 F Instructions d'installation
 I Istruzioni di montaggio
 NL Installatievoorschrift
 DK Installasjonsinstruktus
 N Installationsinstruktioner
 FIN Asennusohje
 S Installation instruktioner
 E Instrucciones de montaje

43191680-001/002

Auxiliary Switches

INSTALLATION INSTRUCTIONS

<p>00A</p> <p>M20</p>	<p>00B</p> <div style="border: 1px solid black; padding: 5px;"> <p>max.: 5 A (res. load) 3 A (ind. load)</p> <p>24 V: ML6421A3005 ML6421B3004 ML7421A3004 ML7421B3003</p> <p>230 V: ML6421A3013 ML6421B3012</p> </div>
<p>1</p> <p>24 Vac 230 Vac</p> <p>4...5 mm</p>	<p>2</p> <p>4...5 mm</p>
<p>3</p> <p>4...5 mm</p> <p>STOP</p>	<p>4</p> <p>4...5 mm</p>



Manufactured for and on behalf of the Environmental and Combustion Controls Division of Honeywell Technologies Srl, Ecublens, Route du Bois 37, Switzerland by its Authorized Representative:

Automation and Control Solutions
Honeywell GmbH
Böblinger Straße 17
D-71101 Schönaich / Germany
Phone: (49) 7031 637 - 01
Fax: (49) 7031 637 - 493
<http://europe.hbc.honeywell.com>

Subject to change without notice. Printed in Germany

MU1B-0349GE51 R0406A

**DIN EN ISO
9001/14001**