

REMINGTON®

tangle
tamer™

*Use and
Care Guide*



DT-800

IMPORTANT SAFETY INSTRUCTIONS

When using an electrical appliance, basic precautions should always be observed, including the following. Read all instructions before using this appliance.

DANGER

To reduce the risk of electric shock:

- Do not reach for an appliance that has fallen into water. Unplug it immediately.
- Do not use while bathing or in the shower.
- Do not place or drop into water or other liquid.
- Do not place or store this appliance where it can fall or be pulled into a tub or sink.
- Except when charging, always unplug this appliance from the electrical outlet immediately after using.
- Unplug this appliance before cleaning it.

WARNING

To reduce the risk of burns, fire, electric shock or injury to persons:

- This appliance is for household use only.
- An appliance should never be left unattended when it's plugged in, except when charging a rechargeable appliance.
- Close supervision is necessary when this appliance is used by, on, or near children or invalids.
- Use this appliance only for its intended use as described in this manual. Do not use attachments not recommended by Remington.
- Keep the cord away from heated surfaces.
- Never operate this appliance if it has a damaged cord or plug, if it is not working properly, if it has been dropped or damaged, or if it has been dropped into water. If any of these things happen, return the appliance to a Remington authorized service center for examination and repair.
- Never drop or insert any object into any of the appliance's openings.

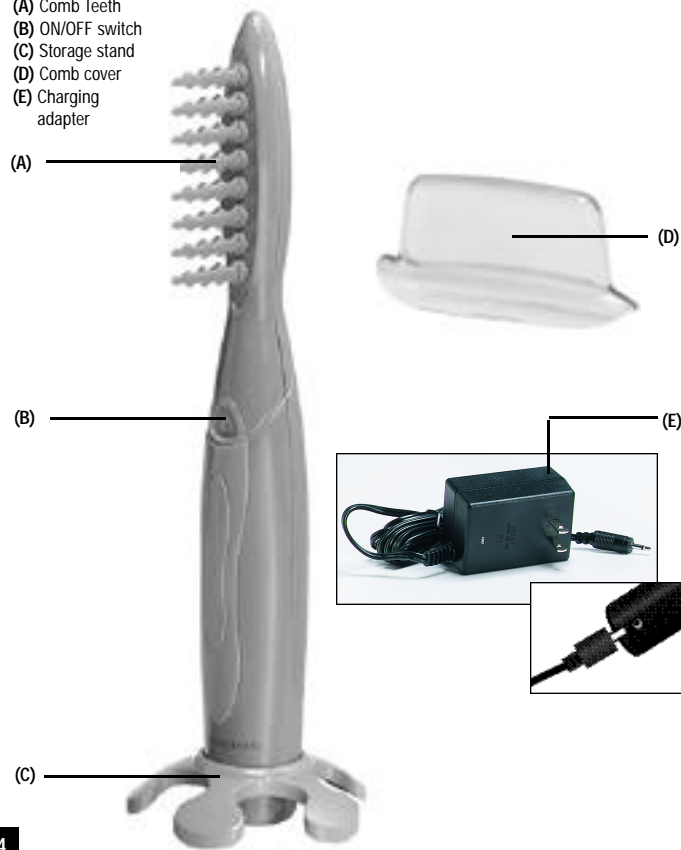
- Do not use outdoors or operate where aerosol (spray) products are being used, or where oxygen is being administered.
- Always store this appliance and cord in a moisture-free area. Do not store it in temperatures exceeding 140°F (60°C)
- Do not plug or unplug this appliance when your hands are wet.
- Do not use an extension cord or a voltage converter with this appliance.
- Do not wrap the cord around the appliance.
- Always attach the plug to the appliance, then to the outlet. To disconnect, turn all controls to OFF, then remove plug from outlet. Detach removable power cords from appliances for storage.
- This appliance has a polarized plug (one blade is wider than the other). As a safety feature, this plug will fit in a polarized outlet only one way. If the plug does not fit fully in the outlet, reverse the plug.

SAVE THESE INSTRUCTIONS

Product Features

Thank you for purchasing the Remington® Tangle Tamer™ – the detangling comb that makes detangling faster and easier than ever. No tangles, no tears, no tantrums!

- (A) Comb Teeth
- (B) ON/OFF switch
- (C) Storage stand
- (D) Comb cover
- (E) Charging adapter



4

How to Use

Charging

The Tangle Tamer™ can be used with or without its cord. To use it without the cord, however, it must first be fully charged:

1. Make sure the Tangle Tamer™ is turned off.
2. Connect the cord to the back of the unit, then plug the charging adapter into the electrical outlet. The red light will glow, indicating that the Tangle Tamer™ is charging.
3. The Tangle Tamer™ must charge 12-14 hours before first use. Recharging time varies based on length of use. Max charging time is 14 hours.

Charging cautions

- Use only the charging adapter supplied with the unit.
- Charge the Tangle Tamer™ at temperatures between 40-90° F, to avoid decreasing the battery life.

Corded use

The Tangle Tamer™ can also be used while plugged in.

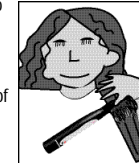
1. Be sure the Tangle Tamer™ is turned off before attaching the power cord.
2. Plug one end of the cord into the back of the Tangle Tamer™, then plug the other end into an electrical outlet.
3. Turn on the Tangle Tamer™ and proceed with Usage Instructions.

CAUTION: Children should always be supervised when using an electrical appliance.

Usage Instructions

Use the Tangle Tamer™ much like you would use a normal comb, on wet or dry hair. Work on small sections at a time. Detangle the ends first and use short strokes.

1. Gently towel dry hair to remove excess water. Avoid rubbing hair with towel—this creates split ends and frizziness.
2. Divide hair into manageable sections.
3. Work with one small section of hair at a time. Securely hold the section of hair 4 or 5 inches from the end.
4. Place the Tangle Tamer™ in the hair just below your hand and ease it through the hair to the ends using short strokes.
5. Move your hand to grasp the section of hair a few inches higher, and repeat the process.
6. Gradually work your way up the section of hair like this until you can run the Tangle Tamer™ smoothly from the roots to the ends. The Tangle Tamer™ should glide easily through wet or dry hair, so do not try to force it. If you come across a difficult tangle, simply take the Tangle Tamer™ out of hair and start again. Avoid allowing the teeth to press against the scalp.



7. Repeat for each section of hair, until all the tangles have been combed through.

5

Cleaning & Maintenance

Cleaning

- Make sure the unit is unplugged and turned off before cleaning.
- Do not immerse the Tangle Tamer™ in water.
- Remove any hairs from the detangling teeth.
- Clean the teeth and handle of the Tangle Tamer™ with a soft,damp cloth. Do not use any solvents or cleaning agents.
- After the Tangle Tamer™ has been cleaned,replace its comb cover and return it to its storage stand.

Battery Removal

When your Tangle Tamer™ reaches the end of its useful life,the battery must be removed and recycled or disposed of properly.

The following procedure should be followed for battery removal:

- Make sure the Tangle Tamer™ is unplugged from any outlets so you don't risk an electric shock.
- Remove the back pink plate with a small, flat screwdriver
- Using a small Phillips head screwdriver, remove the three screws from the back of the Tangle Tamer.™
- Pull or gently pry the Tangle Tamer™ halves apart, exposing the batteries.
- Lift the rubber side panels from their cradles and discard.
- Pull or pry batteries from PC board.
- Twist batteries to break wires. Wires may also be cut.

CAUTION: THESE NICKEL-CADMIIUM BATTERIES MUST BE RECYCLED OR DISPOSED OF IN ACCORDANCE WITH STATE AND LOCAL REGULATIONS.

Do not burn or mutilate, as they may burst or release toxic materials. Do not short-circuit, as this may cause burns.

The EPA certified RBRC® Battery Recycling Seal on the nickel-cadmium (Ni-Cd) battery indicates Remington Products Company, L.L.C.is voluntarily participating in an industry program to collect and recycle these batteries at the end of their useful life,when taken out of service in the United States or Canada.The RBRC® program provides a convenient alternative to placing used Ni-Cd batteries into the trash or the municipal waste stream,which may be illegal in your area.Please call 1-800-8-BATTERYSM for information on Ni-Cd battery recycling and disposal bans/restriction in your area.Remington Products Company, L.L.C.'s involvement in this program is part of our commitment to preserving our environment and conserving our natural resources.

Storage

When not in use,unplug the unit.Store out of reach of children in a safe,dry location. Never wrap the cord around the appliance as this will cause the cord to wear prematurely and break.Handle cord carefully for long life and avoid jerking,twisting or straining,especially at plug connections.



Warranty

Full Two-Year Warranty

Remington Products Company, L.L.C.warrants this product against any defects that are due to faulty material or workmanship for a two-year period from the original date of consumer purchase. This warranty does not include damage to the product resulting from accident or misuse.

If the product should become defective within the warranty period,we will repair it or elect to replace it free of charge. We will return your product,transportation charges prepaid,provided it is delivered prepaid to:

Remington Products Company, L.L.C.
60 Main Street,Bridgeport,CT 06604
Attention:Service Department

Include a letter stating the reason for the return.Keep sales receipt as proof of purchase for warranty purposes.

REMINGTON® SHALL NOT BE RESPONSIBLE FOR ANY INCIDENTAL,SPECIAL OR CONSEQUENTIAL DAMAGES.

This warranty gives you specific legal rights and you may also have other rights that vary from state to state.Some states do not allow the exclusion or limitation of incidental,special or consequential damages.

Remington® Money-Back Offer

If within 30 days after you have purchased your Remington® product,you are not satisfied and would like a refund,take back the product and sales slip indicating purchase price and date of purchase to the retailer from whom the product was purchased.Remington® will reimburse all retailers who accept the product within 30 days from the date of purchase.If you have any questions concerning the money-back guarantee,please call 800-736-4648 in the U.S.

**For questions or comments:
Please call 800-736-4648**

Visit us at www.remington-products.com

This product will bear one or more
compliance marks, listed by Underwriter
Laboratories, Inc.



Remington and Tangle Tamer are trademarks
of Remington Products Company, L.L.C. in
the U.S.

© 2003 R.P.C, L.L.C.
Job #WPC03-131 11/03 Part No.15023

Remington Products Company, L.L.C.
60 Main Street
Bridgeport, CT 06604

MADE IN CHINA