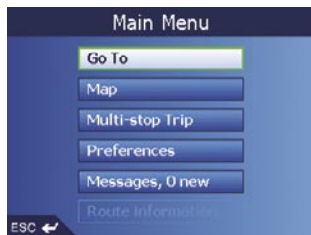


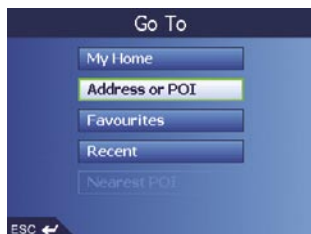
# Setting a Destination



Click "Go To"



Make a selection



Click "Address or POI"



Select an intersection



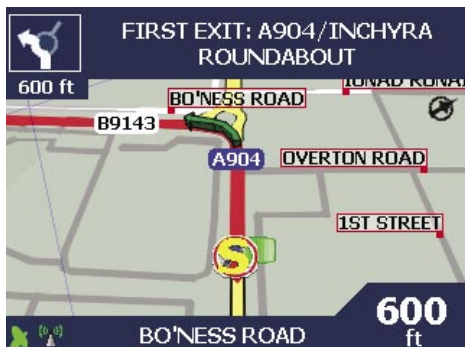
Click "Find street"



Click "Go"



Select appropriate street





# NAVMAN

## Navman NZ Limited

7-21 Kawana Street, Northcote  
PO Box 68 155 Newton  
Auckland  
New Zealand  
Tel: +64 (0)9 481 0500  
Fax: +64 (0)9 480 3176  
Customer Support: [fleet.support@navman.com](mailto:fleet.support@navman.com)  
Website: [www.navman.com](http://www.navman.com)

## Navman Wireless Australia

Navman Australia Pty. Ltd  
Suite 2, 408 Victoria Rd  
PO Box 479  
Gladesville NSW 2111  
AUSTRALIA  
Tel: +61 2 9879 9000  
Fax: +61 2 9879 9001  
Website: [www.navman.com](http://www.navman.com)

## Navman Wireless UK

Innovation Centre 2  
Keele University Science Park  
Keele, Staffordshire, ST5 5NH  
UNITED KINGDOM  
Tel: +44 (0) 1782 55 79 50  
Fax: +44 (0) 1782 55 79 79  
Email: [info@navmanwireless.co.uk](mailto:info@navmanwireless.co.uk)  
Website: [www.navmanwireless.co.uk](http://www.navmanwireless.co.uk)

## Navman Wireless NZ

7-21 Kawana St, Northcote  
PO Box 68 155 Newton  
Auckland  
New Zealand  
Customer Support and Info:  
0800 GPS FLEET (0800 477 353)  
Email: [wirelessnzsupport@navman.com](mailto:wirelessnzsupport@navman.com)  
Website: [www.navman.com](http://www.navman.com)

NAVMAN

# M-Nav 650

## *Quick Start Guide*



# Contents and Controls

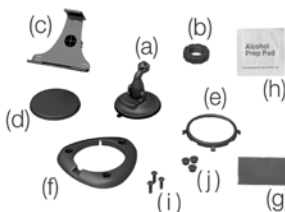


Carry Case



RJ-45 cable

## Mounting brackets:



(a) Suction-cup/ballfoot

(f) Screw plate

(b) Locking-nut

(g) Adhesive tape

(c) Socket-clip

(h) Alcohol swab

(d) Baseplate

(i) 3 x Screws

(e) Retainer ring

(j) 3 x Screw caps



Documentation, including:

- User Manual
- Quick Start Guide
- Limited Warranty Agreement
- Registration Card

## Zoom/Brightness

Change the amount of map area shown, or press and hold to adjust the screen brightness.

## OK

Select the highlighted menu option, text or command.

## Menu/Power

Press once to return to the Message List, twice for the Main Menu, or hold down for Standby Mode.

## Volume

Press to hear the very next instruction, or hold down to adjust the voice guidance volume.

## ESC

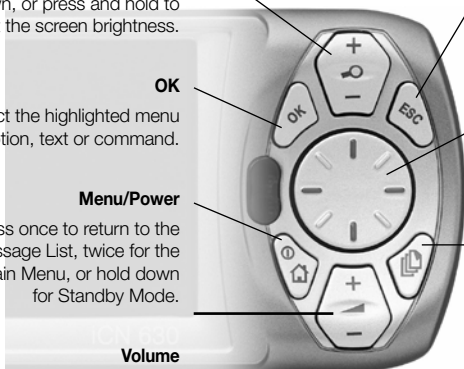
Cancels an action, deletes the last text character, returns to the previous screen or Map. Hold down to delete a line of text.

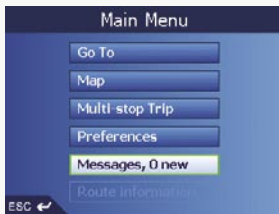
## 8-way toggle

Move up, down, left or right. Press up or down to adjust the viewing angle on the 3D Map screen.

## Page

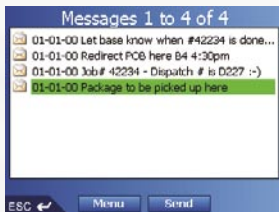
Change map views, including 3D Map\* view. Use to view further screens if available.



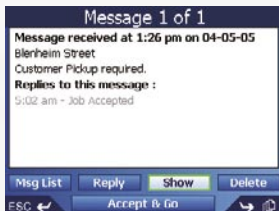


# Routing to a Message Location

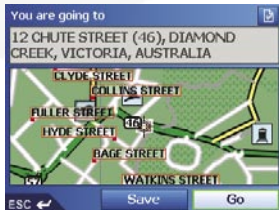
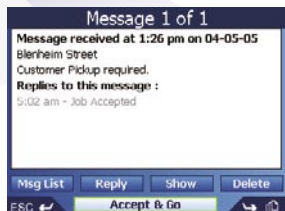
Select "**Messages**"



Select a Message



Select "**Show**" to save and confirm...

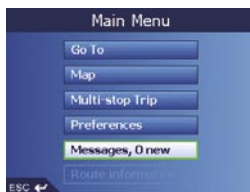


**OR...** Select "**Accept & Go**" to navigate NOW

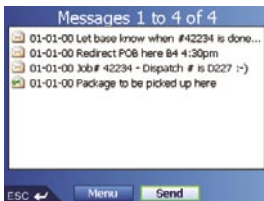


# Sending a Message

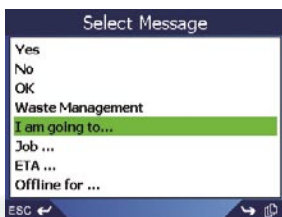
Select "**Messages**"



Select "**Send**"



Select a Message



Edit and  
Select "**Send**"

