

Rowenta®

GUIDE DE PRISE EN MAIN RAPIDE

QUICK START GUIDE

GUÍA DE CONSULTA RÁPIDA

GUIDA RAPIDA

GUIA DE CONSULTA RÁPIDA

KORTE HANDLEIDING

KURZANLEITUNG

RYCHLÝ NÁVOD K OBSLUZE

RYCHLÝ NÁVOD NA OBSLUHU

GYORS HASZNÁLATBAVÉTELI ÚTMUTATÓ

GHID DE INIȚIERE RAPIDĂ

KRATKO PŮKOVODĚTVO ZA UPOTREBA

VODIČ ZA BRZI POČETAK

VODIČ ZA BRZI POČETAK

VODNIK ZA HITRI ZAGON

UPUTSTVO ZA BRZI POČETAK



FR

EN

ES

IT

PT

NL

DE

CS

SK

HU

RO

BG

HR

SR

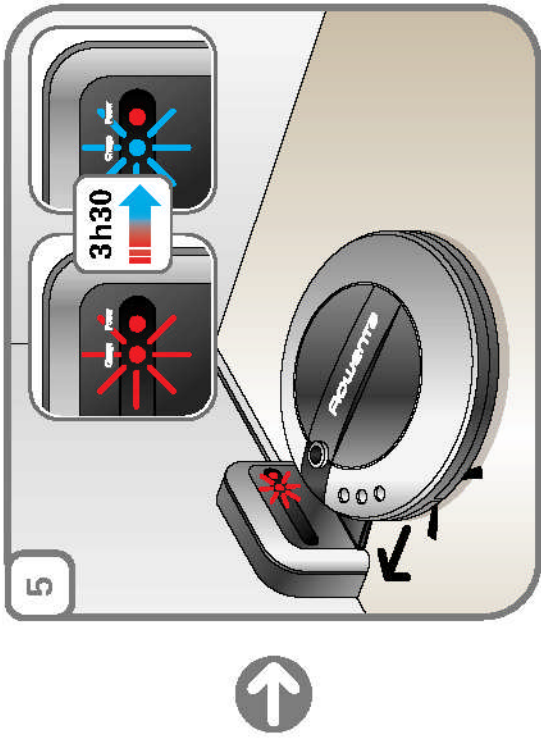
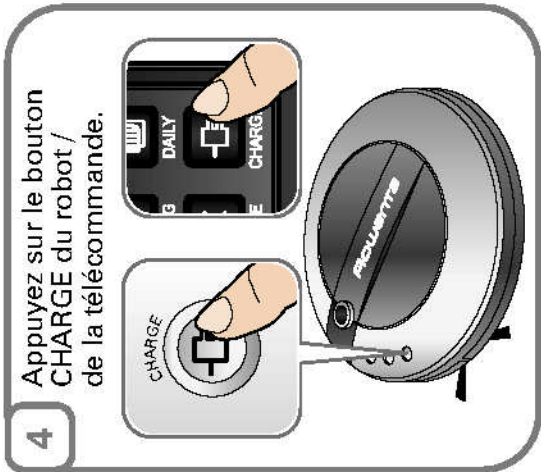
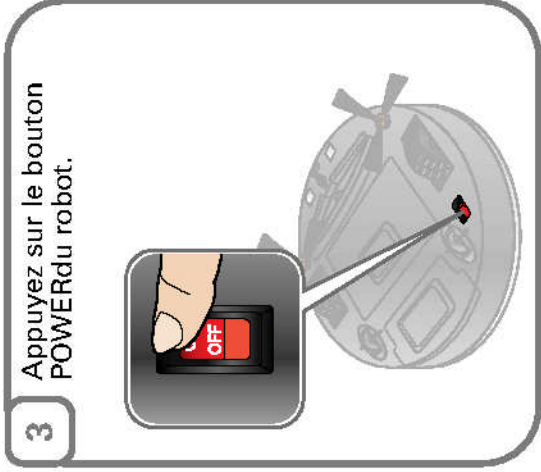
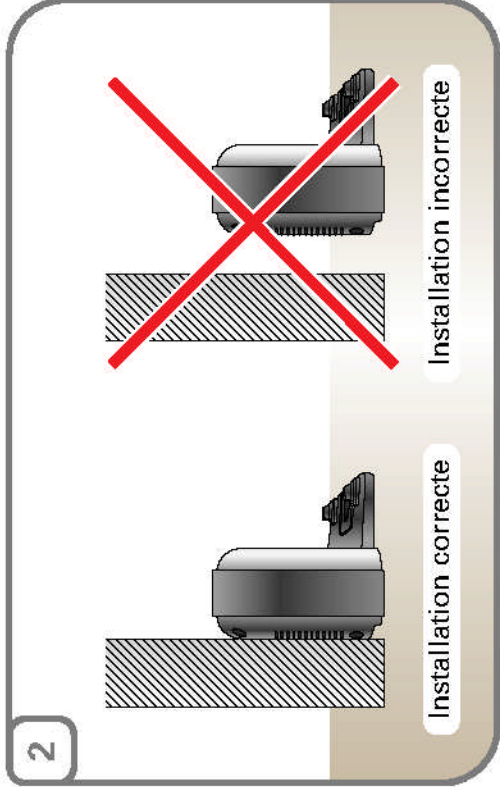
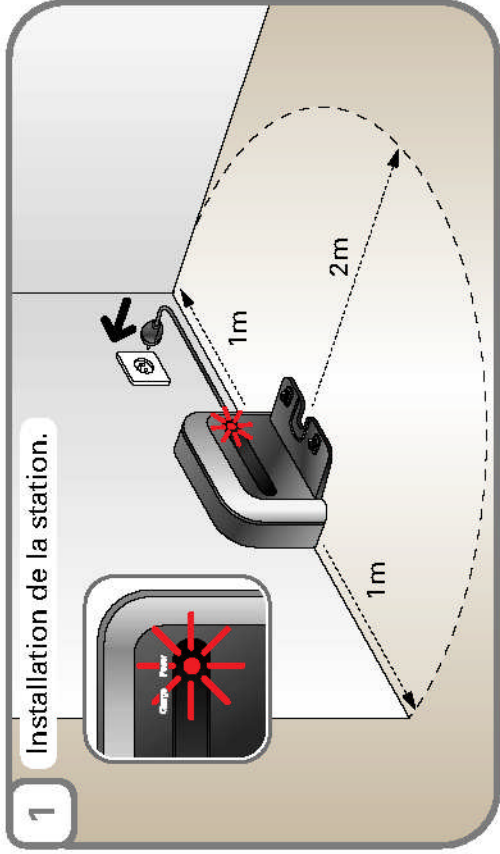
SL

BS

EXTREM' AIR MOTION

www.rowenta.com

1 MISE EN MARCHÉ



2 MODES DE NETTOYAGE

FR

4 modes de nettoyage au choix (selon modèle)

1 Mode Smart

→

x1

2 Mode Random

→

x2

3 Mode Spot

→

x3

4 Mode Manuel

x4

5

Après sélection du mode de nettoyage, appuyez sur le bouton START / STOP

3

PROGRAMMER UN NETTOYAGE

Exemple : il est 12:00 PM. Lancer un nettoyage à 3:00 PM.

A. Régler l'horloge du robot

1. Permet d'entrer l'heure actuelle.
2. Ces boutons font augmenter ou diminuer l'heure.
3. Permet de valider l'heure actuelle.



B. Programmer le nettoyage

1. Activez la programmation du nettoyage.
2. Ces boutons font augmenter ou diminuer l'heure.
3. Permet de valider l'heure du nettoyage.
4. Permet de régler le niveau de puissance.
5. Le nettoyage est programmé à 03:00 PM.



C. Programmer le nettoyage quotidien

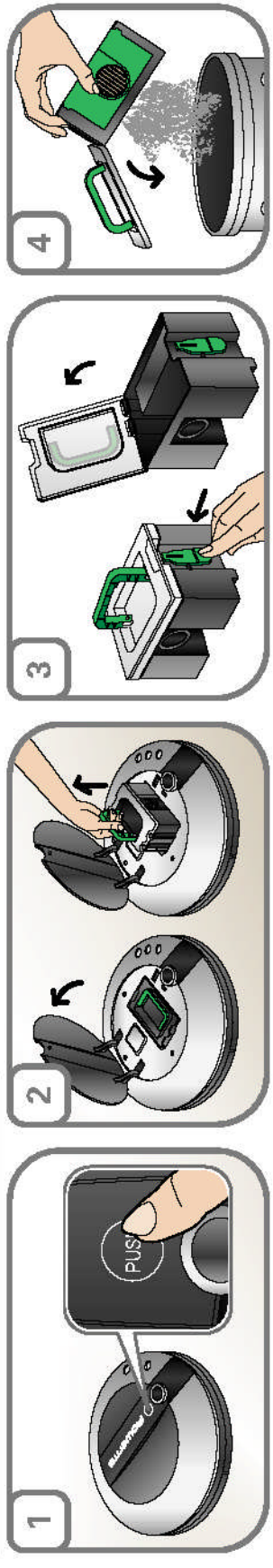


Permet d'activer le nettoyage quotidien.

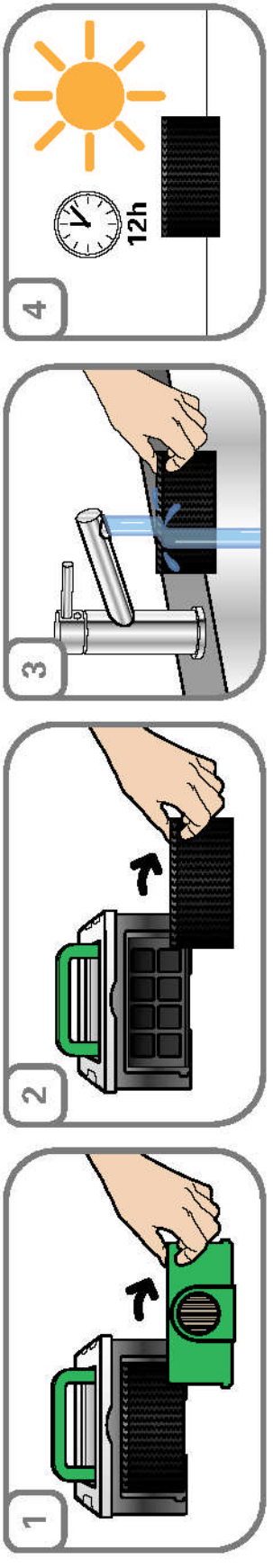
FR

4 NETTOYAGE DU ROBOT

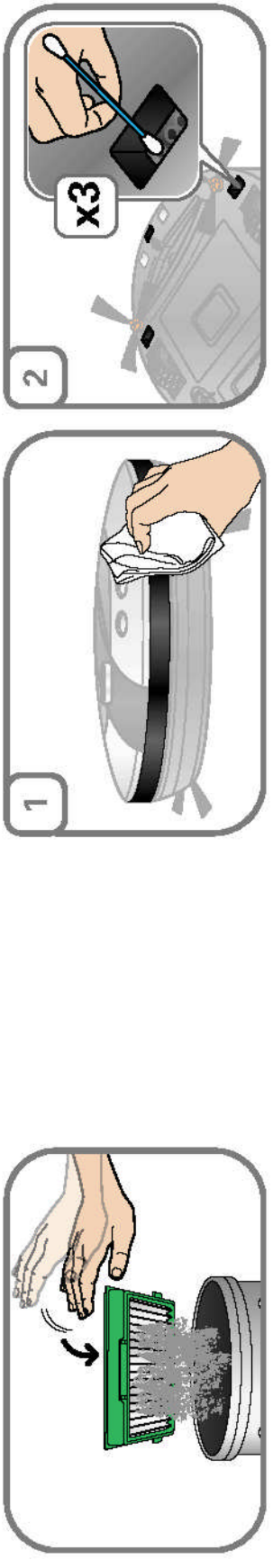
A. Vidage du bac à poussières



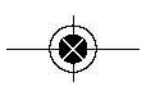
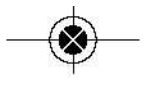
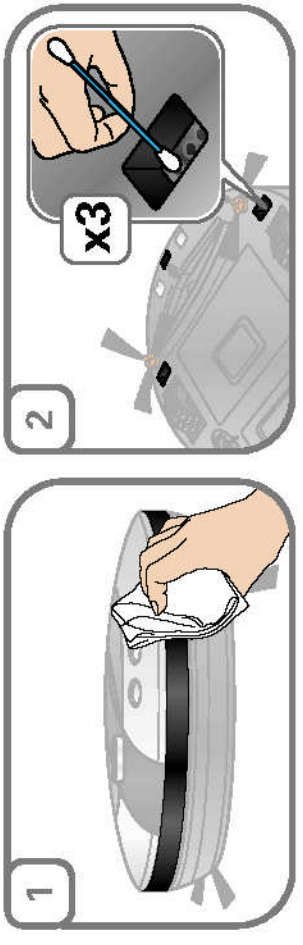
B. Nettoyage du filtre mousse



C. Nettoyage du filtre (H)epa



D. Nettoyage des capteurs



1 GETTING STARTED

1 Installing the station

1m 2m 1m

Correct installation

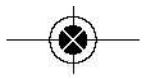
Incorrect installation

3 Press the POWER button on the robot

4 Press the CHARGE button on the robot/remote control

5

3h30


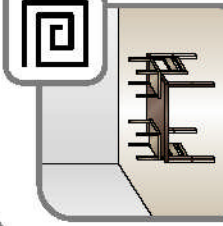
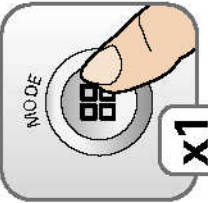


2 CLEANING MODES


EN

4 cleaning modes to choose from (depending on model).



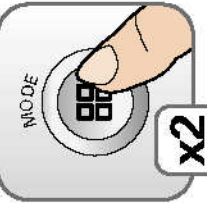
1 Smart Mode


x1





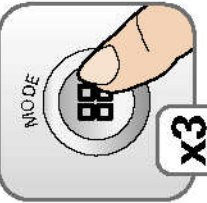
2 Random Mode


x2



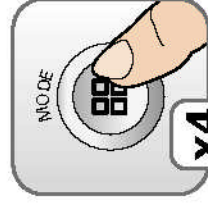
3 Spot Mode



x3



4 Manual Mode


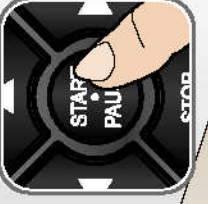



x4

5

After selecting the cleaning mode, press the START/STOP button

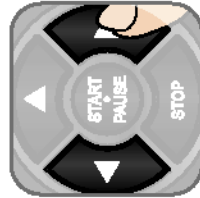
3

PROGRAMMING CLEANING

Example: it is 12:30 PM. Start cleaning at 3:00 PM

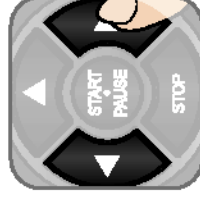
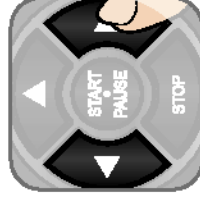
A. Set the robot timer

1. Allows you to enter the current time.
2. These buttons move the time forwards or backwards.
3. Allows you to confirm the current time.



B. Programme the cleaning

1. Activate the cleaning programming.
2. These buttons move the time forwards or backwards.
3. Allows you to confirm the cleaning time.
4. Allows you to regulate the power level.
5. The cleaning is programmed for 3:00 PM.



C. Programme daily cleaning



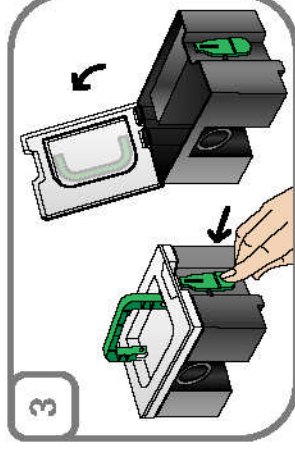
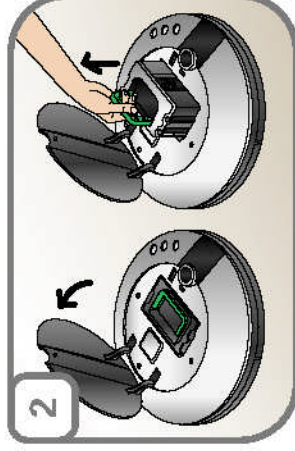
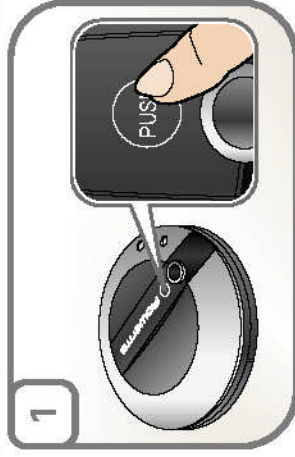
Allows you to activate daily cleaning.



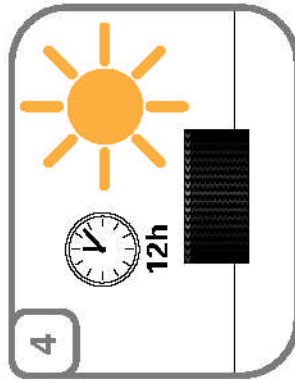
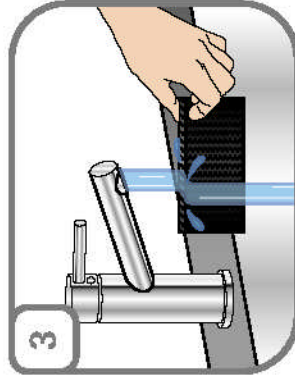
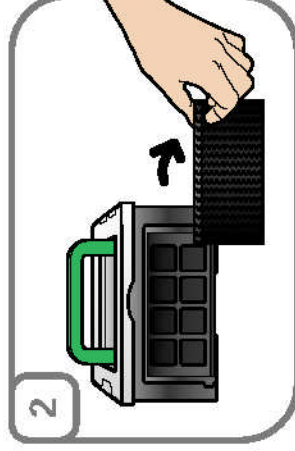
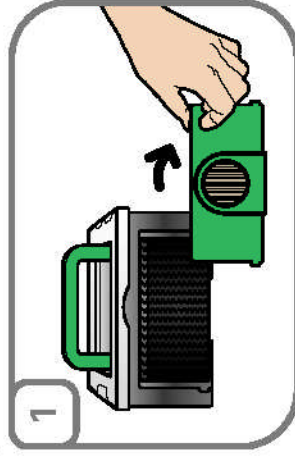
EN

4 CLEANING THE ROBOT

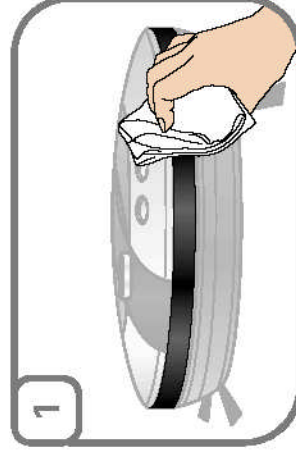
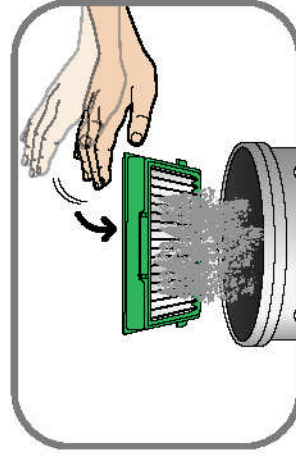
A. Emptying the dust bag



B. Cleaning the foam filter



C. Cleaning the Hepa filter



D. Cleaning the sensors

